

## APPENDIX A: 2014 SAMPLING SITE MAPS

## TABLE OF FIGURES

Figure A1. Salmon early life history sampling locations FA-104 (Whiskers Slough), 2014.....	1
Figure A2. Salmon early life history sampling locations FA-113 (Oxbow I), 2014 .....	2
Figure A3. Salmon early life history sampling locations FA-128 (Slough 8A), 2014. ....	3
Figure A4. Salmon early life history sampling locations FA-138 (Gold Creek), 2014.....	4
Figure A5. Salmon early life history sampling locations FA-141 (Indian River), 2014. ....	5
Figure A6. Salmon early life history sampling locations FA-144 (Slough 21), 2014.....	6
Figure A7. Seasonal GRTS and opportunistic fish distribution and abundance sampling locations PRM 110-116, 2014.....	7
Figure A8. Seasonal GRTS and opportunistic fish distribution and abundance sampling locations PRM 128-131, 2014.....	8
Figure A9. Seasonal GRTS and opportunistic fish distribution and abundance sampling locations PRM 142-148, 2014.....	9
Figure A10. Seasonal GRTS, and opportunistic fish distribution and abundance sampling locations PRM 152-156, and direct tributary sampling at Cheechako Creek, 2014.....	10
Figure A11. Seasonal direct tributary fish distribution and abundance sampling locations, Chinook Creek and Devil Creek, 2014. ....	11
Figure A12. Seasonal GRTS, and opportunistic fish distribution and abundance sampling locations, PRM 173-180, 2014. ....	12
Figure A13. Seasonal GRTS and opportunistic fish distribution and abundance sampling locations PRM 182-187 and tributary direct sampling locations for Unnamed Tributary 184.0 and Tsusena Creek, 2014. ....	13



Figure A1. Salmon early life history sampling locations FA-104 (Whiskers Slough), 2014.

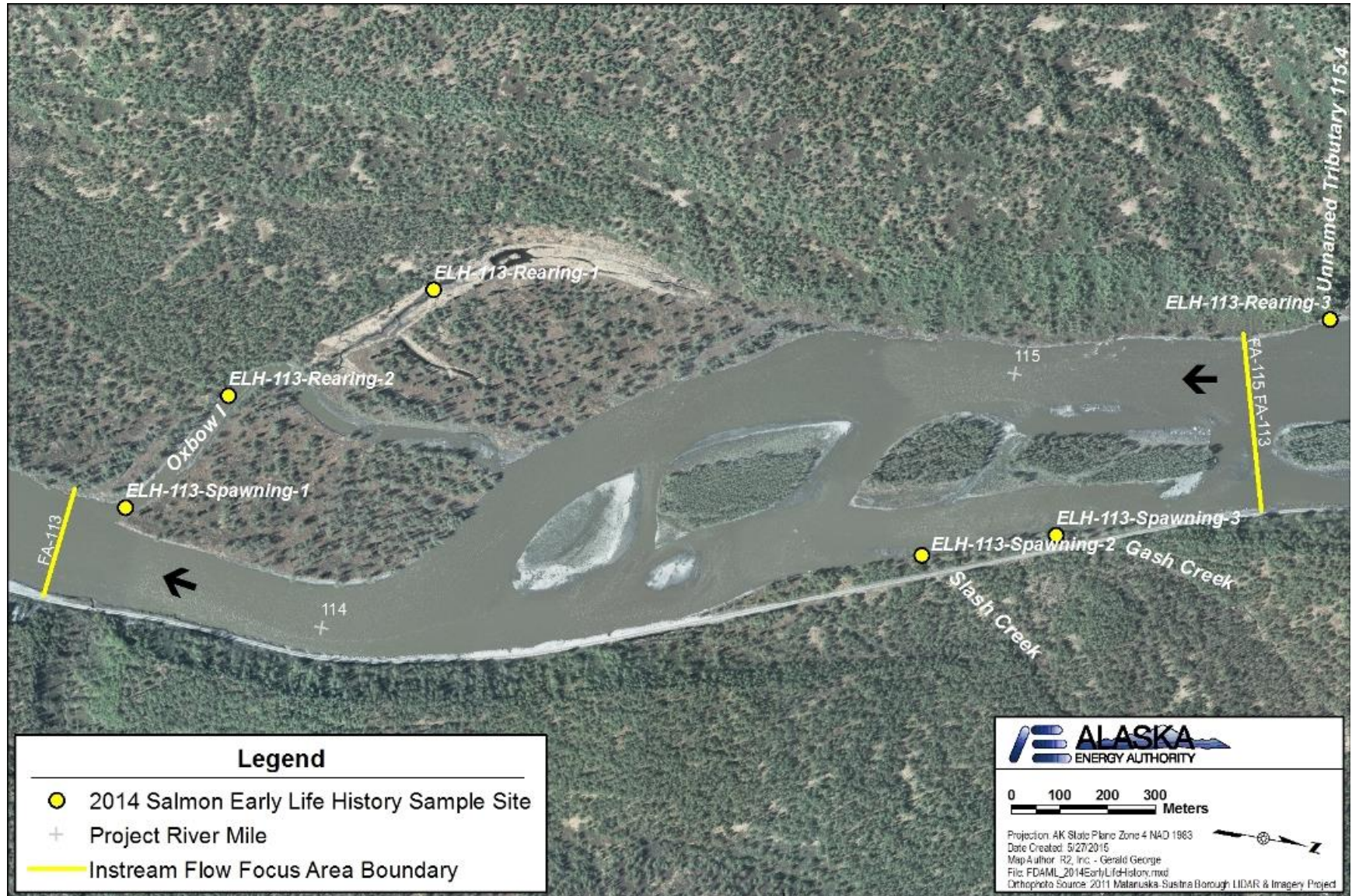


Figure A2. Salmon early life history sampling locations FA-113 (Oxbow I), 2014



Figure A3. Salmon early life history sampling locations FA-128 (Slough 8A), 2014.



Figure A4. Salmon early life history sampling locations FA-138 (Gold Creek), 2014.

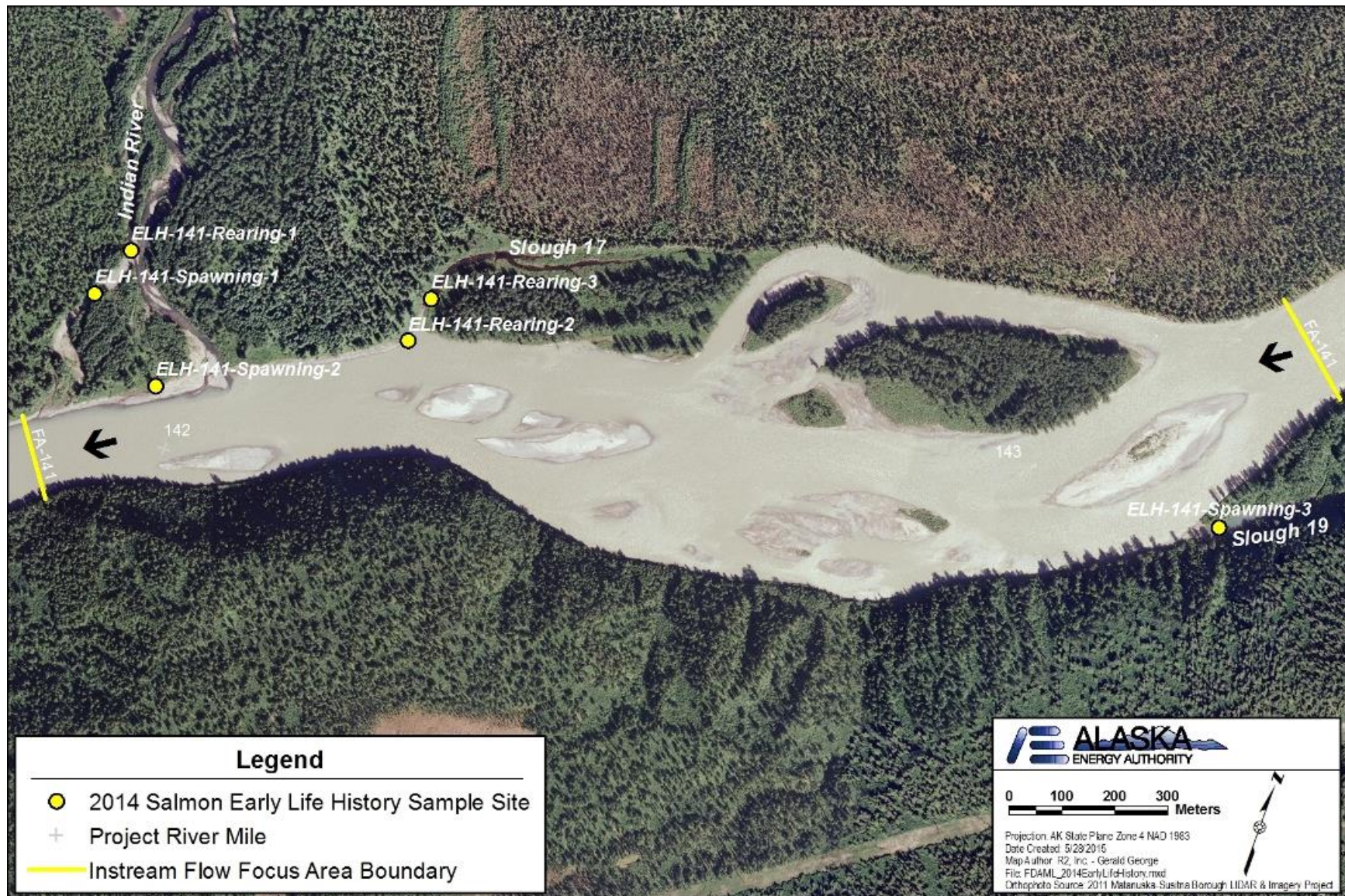


Figure A5. Salmon early life history sampling locations FA-141 (Indian River), 2014.



Figure A6. Salmon early life history sampling locations FA-144 (Slough 21), 2014.



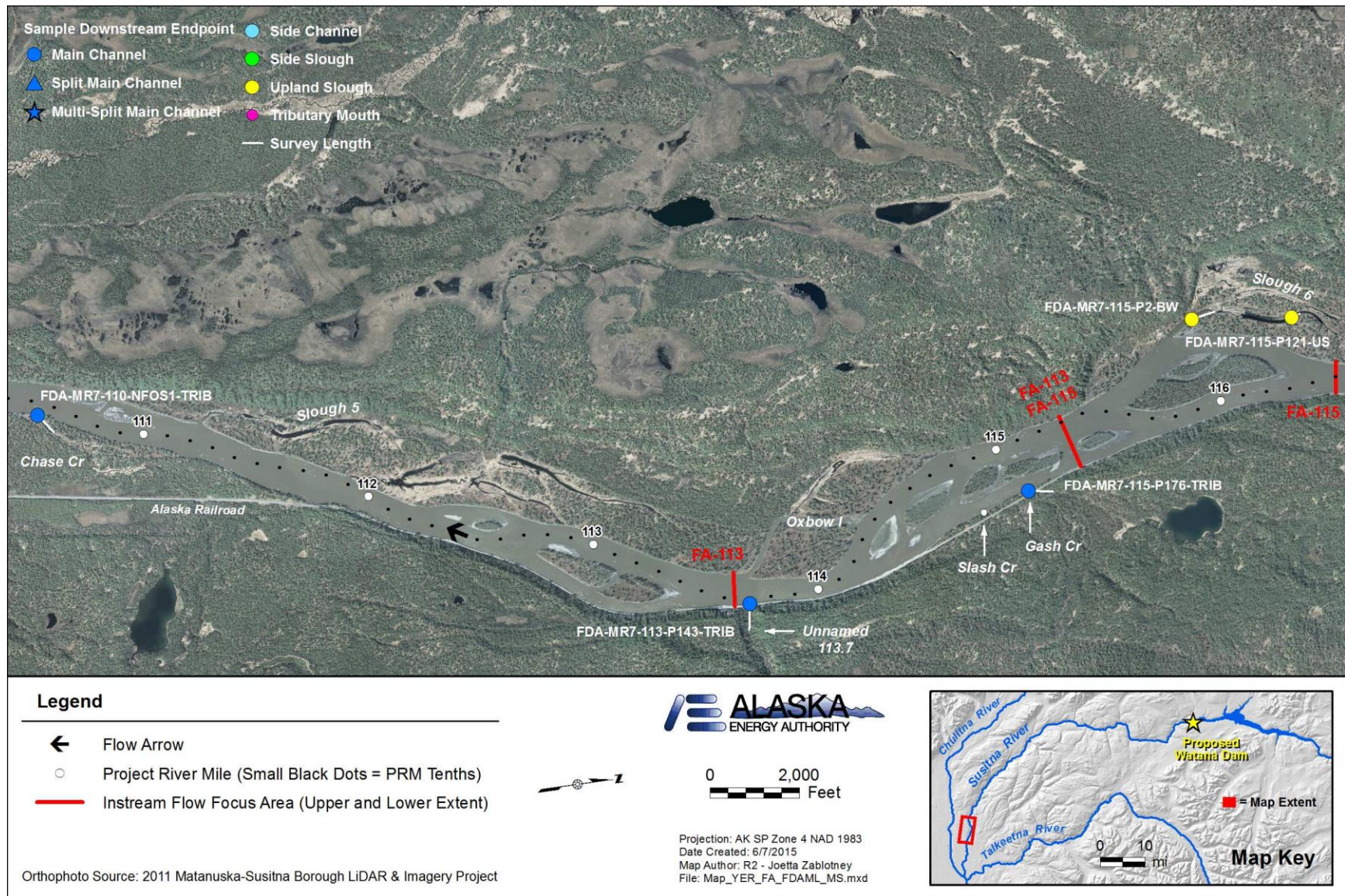


Figure A7. Seasonal GRTS and opportunistic fish distribution and abundance sampling locations PRM 110-116, 2014.

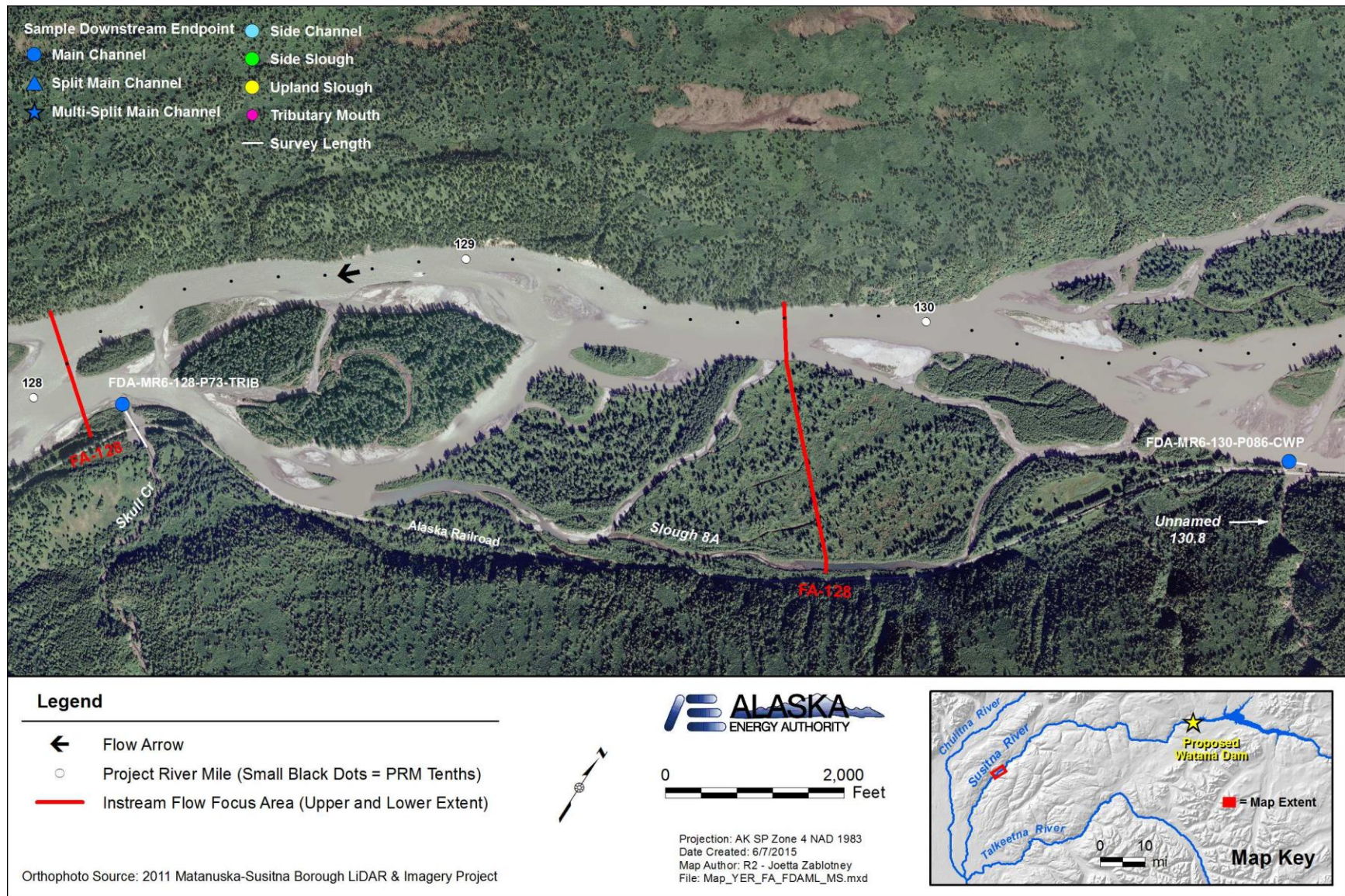


Figure A8. Seasonal GRTS and opportunistic fish distribution and abundance sampling locations PRM 128-131, 2014.

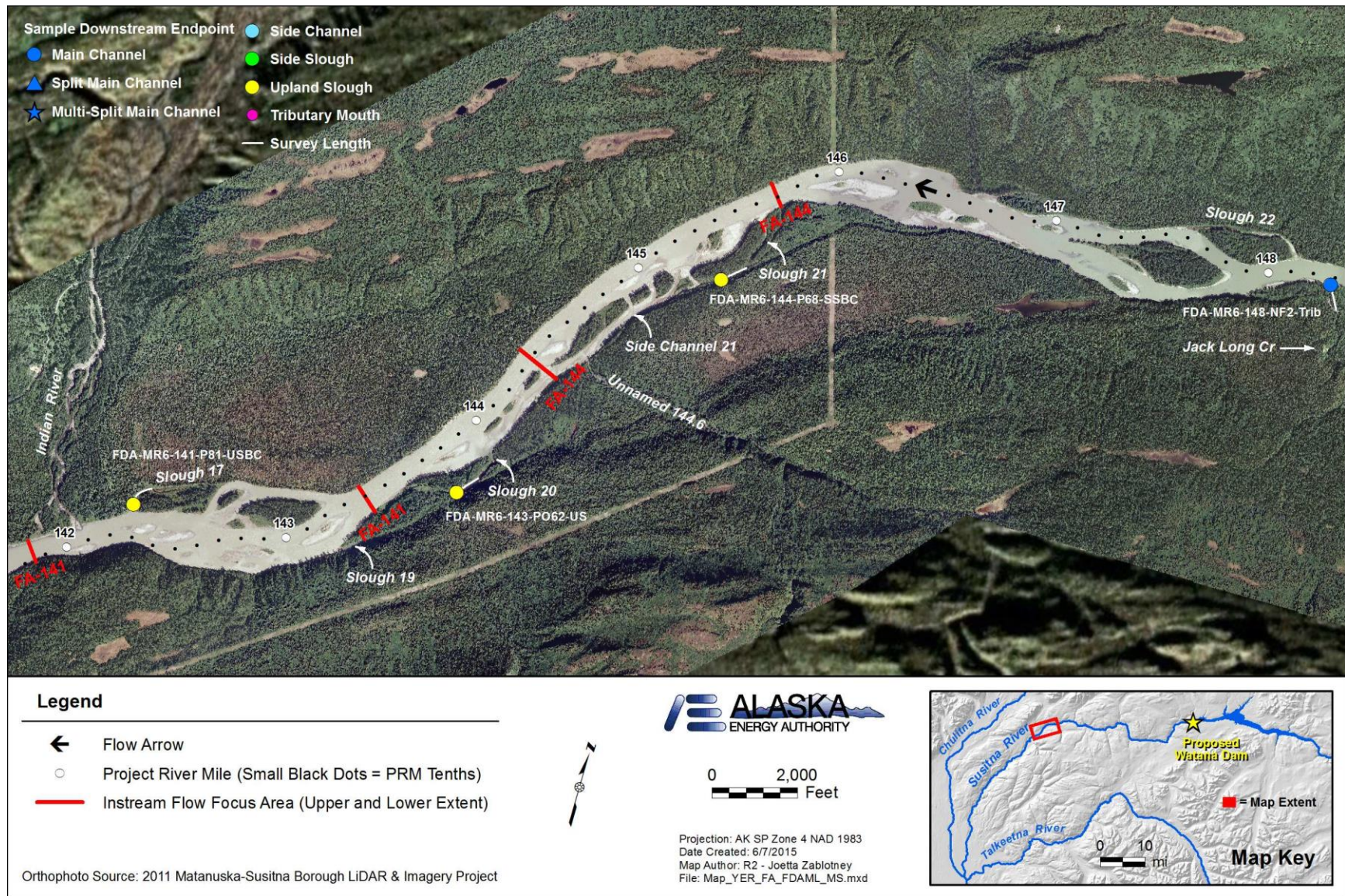


Figure A9. Seasonal GRTS and opportunistic fish distribution and abundance sampling locations PRM 142-148, 2014.

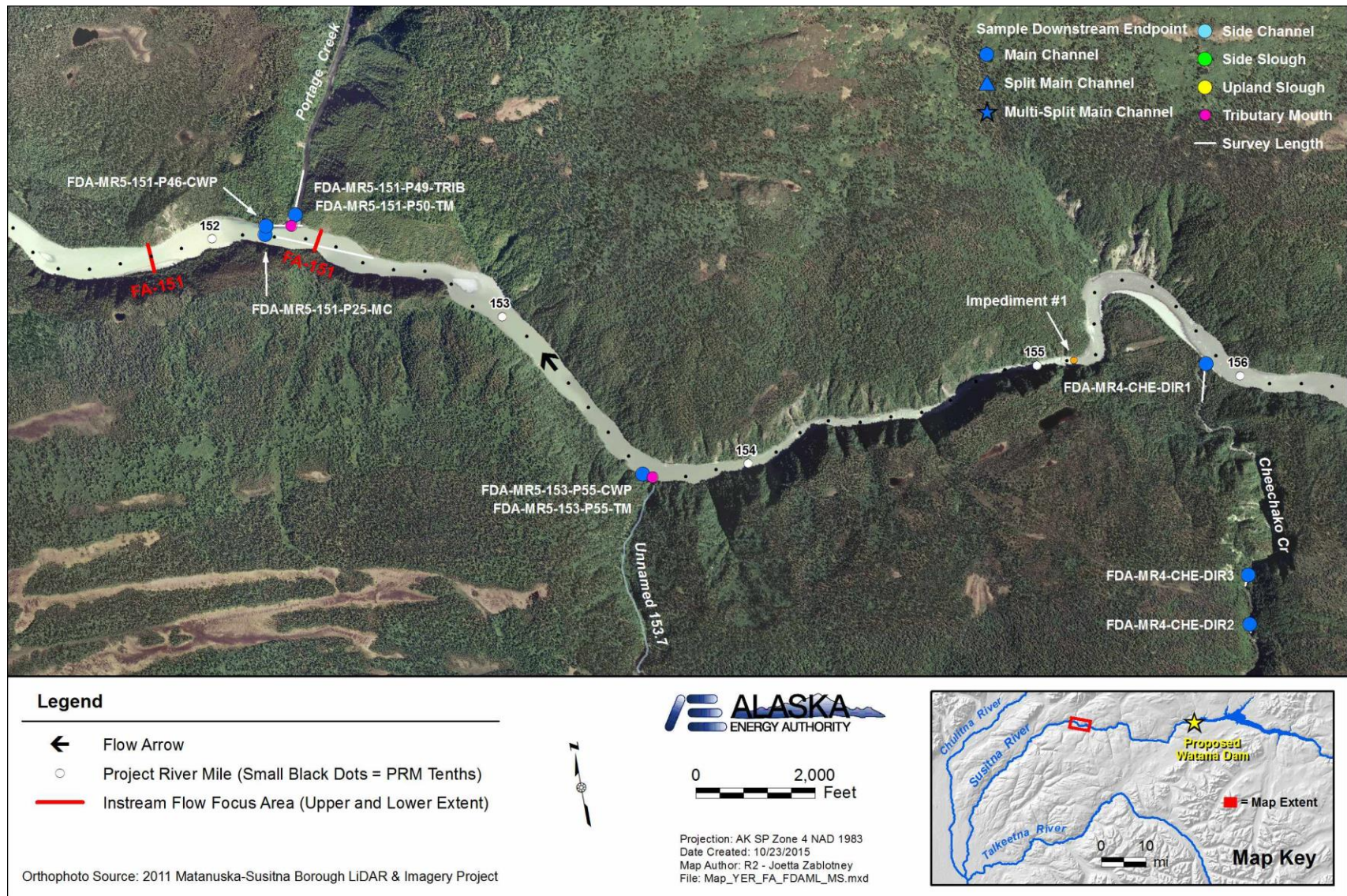


Figure A10. Seasonal GRTS, and opportunistic fish distribution and abundance sampling locations PRM 152-156, and direct tributary sampling at Cheechako Creek, 2014.

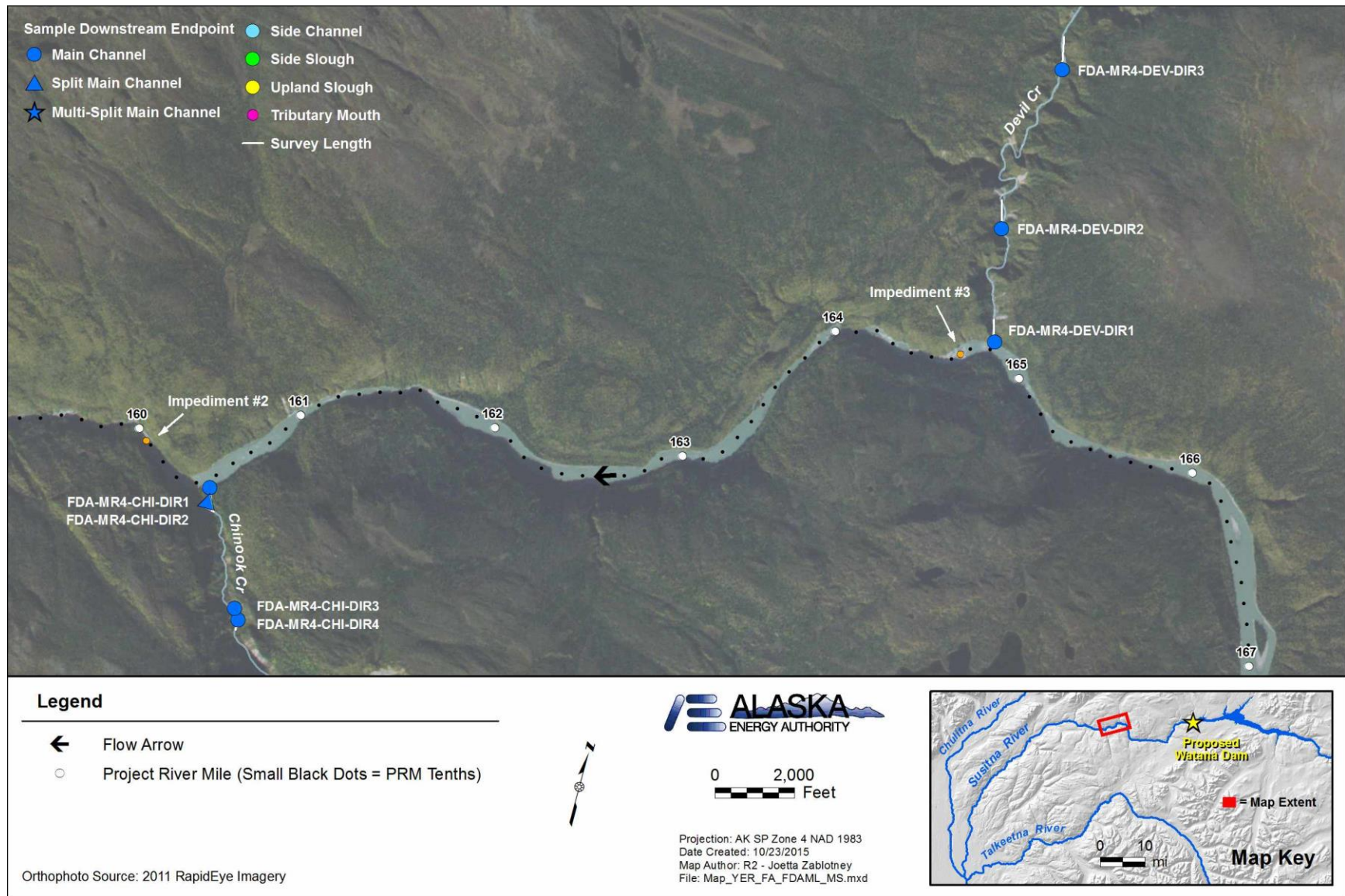


Figure A11. Seasonal direct tributary fish distribution and abundance sampling locations, Chinook Creek and Devil Creek, 2014.

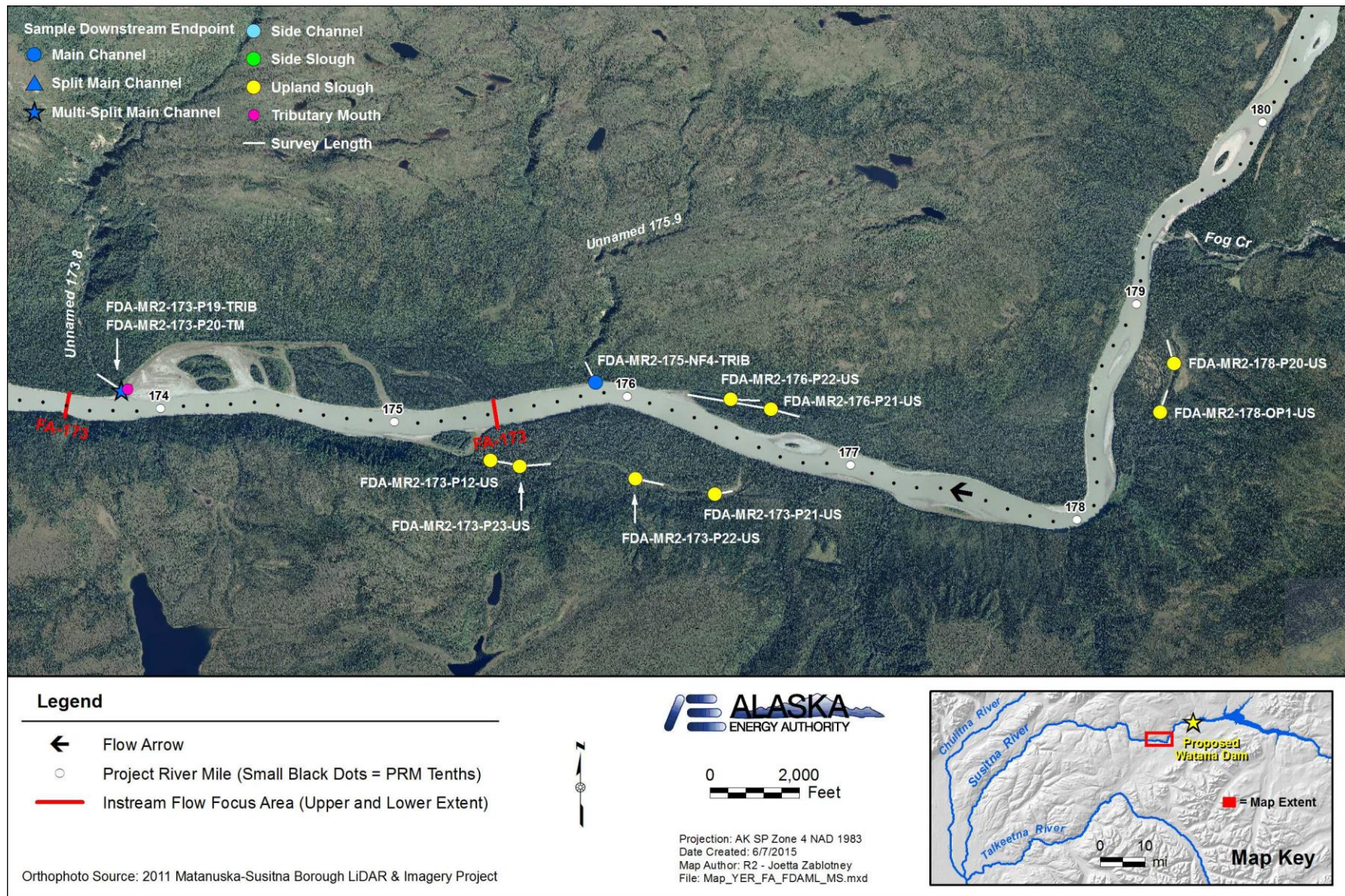


Figure A12. Seasonal GRTS, and opportunistic fish distribution and abundance sampling locations, PRM 173-180, 2014.

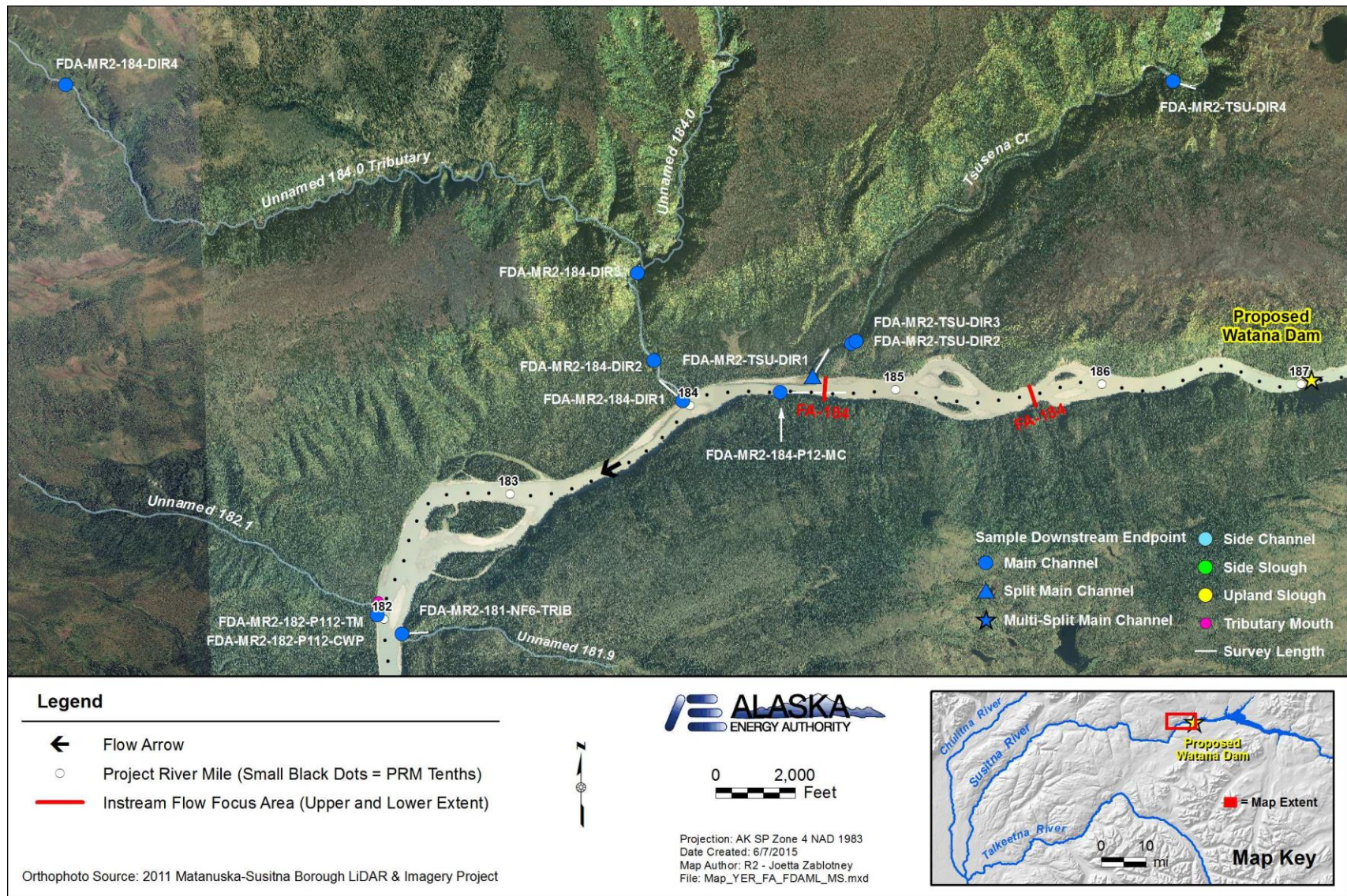


Figure A13. Seasonal GRTS and opportunistic fish distribution and abundance sampling locations PRM 182-187 and tributary direct sampling locations for Unnamed Tributary 184.0 and Tsusena Creek, 2014.