

**Susitna-Watana Hydroelectric Project  
(FERC No. 14241)**

**Fish and Aquatics Instream Flow Study  
(Study 8.5)**

**2013-2014 Instream Flow Winter Studies  
Technical Memorandum Addendum**

Prepared for

Alaska Energy Authority



**SUSITNA-WATANA HYDRO**

*Clean, reliable energy for the next 100 years.*

Prepared by

R2 Resource Consultants, Inc.

December 2014

## CONTENTS

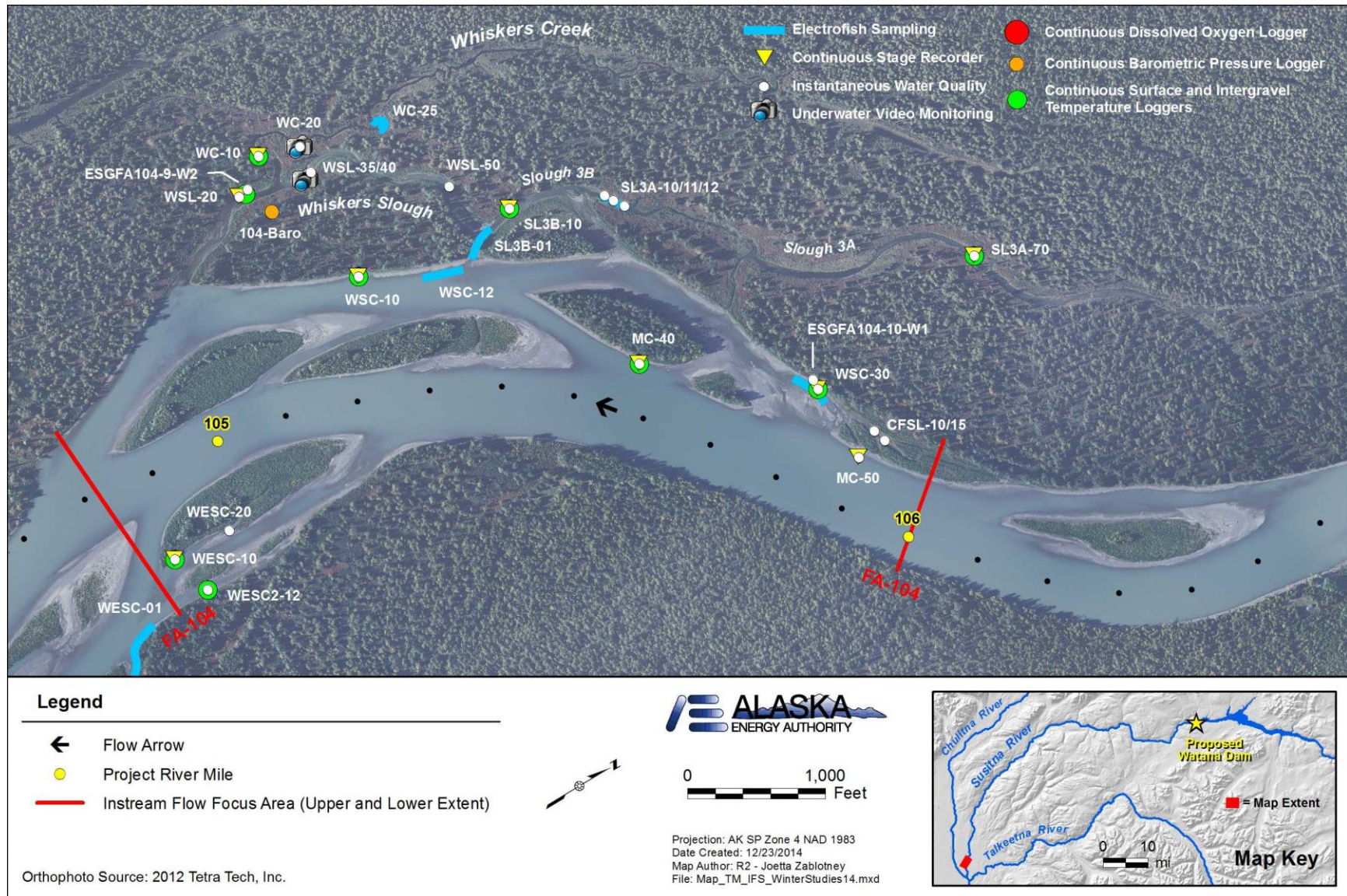
This document is an addendum to the 2013-2014 Instream Flow Winter Studies Technical Memorandum filed with Federal Energy Regulatory Commission (FERC) on September 17, 2014. The Figures contained herein were revised to include annotations for all 2013-2014 Instream Flow winter studies sites.

## LIST OF FIGURES

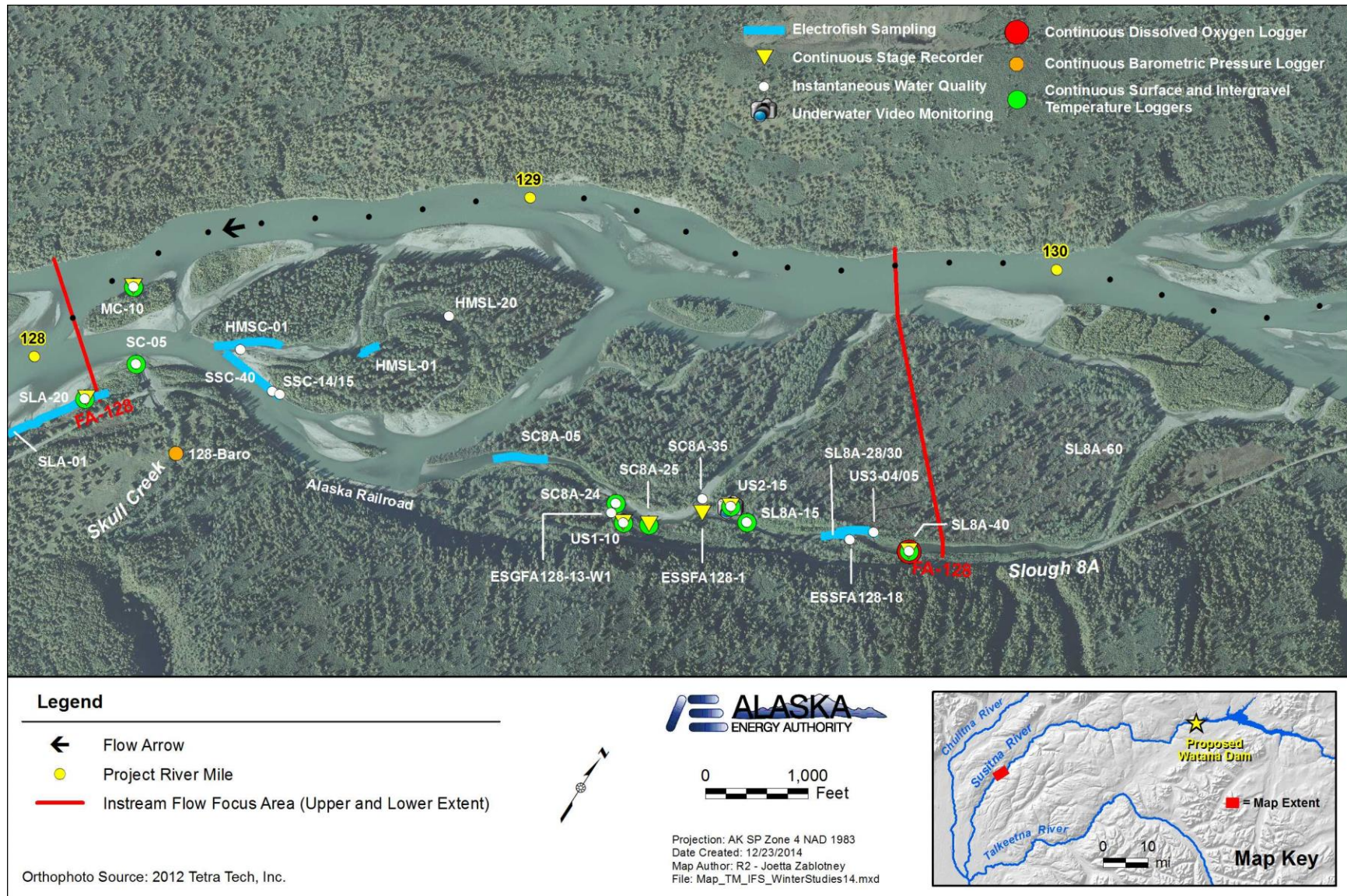
Revised Figure 2. Locations of 2013-2014 winter sites for continuous and instantaneous water quality monitoring, water level monitoring, and fish sampling in FA-104 (Whiskers Slough)..... 2

Revised Figure 3. Locations of 2013-2014 winter sites for continuous and instantaneous water quality monitoring, water level monitoring, and fish sampling in FA-128 (Slough 8A). ..... 3

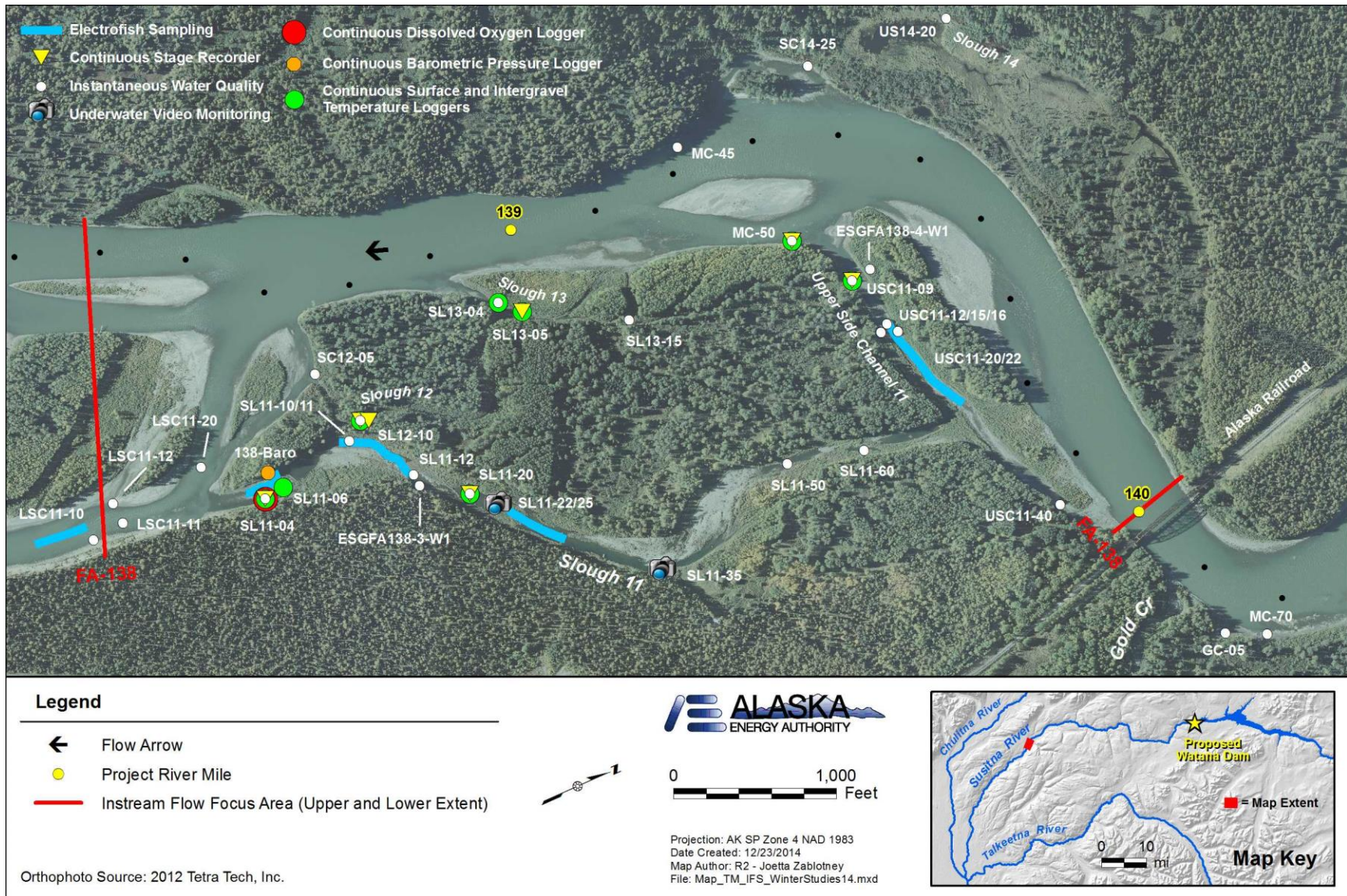
Revised Figure 4. Locations of 2013-2014 winter sites for continuous and instantaneous water quality monitoring, water level monitoring, and fish sampling in FA-138 (Gold Creek). ..... 4



Revised Figure 2. Locations of 2013-2014 winter sites for continuous and instantaneous water quality monitoring, water level monitoring, and fish sampling in FA-104 (Whiskers Slough).



Revised Figure 3. Locations of 2013-2014 winter sites for continuous and instantaneous water quality monitoring, water level monitoring, and fish sampling in FA-128 (Slough 8A).



Revised Figure 4. Locations of 2013-2014 winter sites for continuous and instantaneous water quality monitoring, water level monitoring, and fish sampling in FA-138 (Gold Creek).