



SUSITNA-WATANA HYDRO

Clean, reliable energy for the next 100 years.

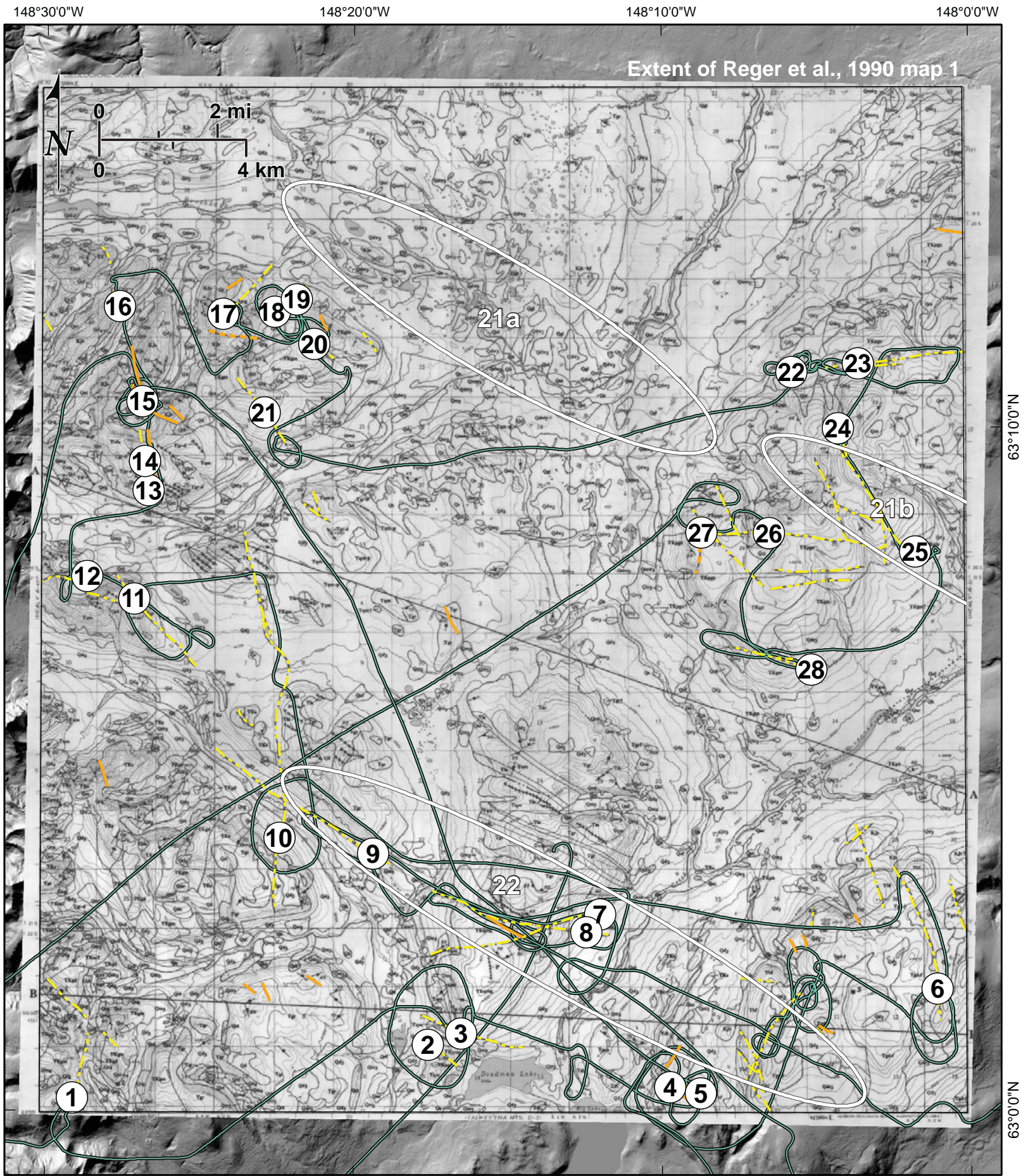
ALASKA ENERGY AUTHORITY

AEA11-022

16-1401-TM-012014

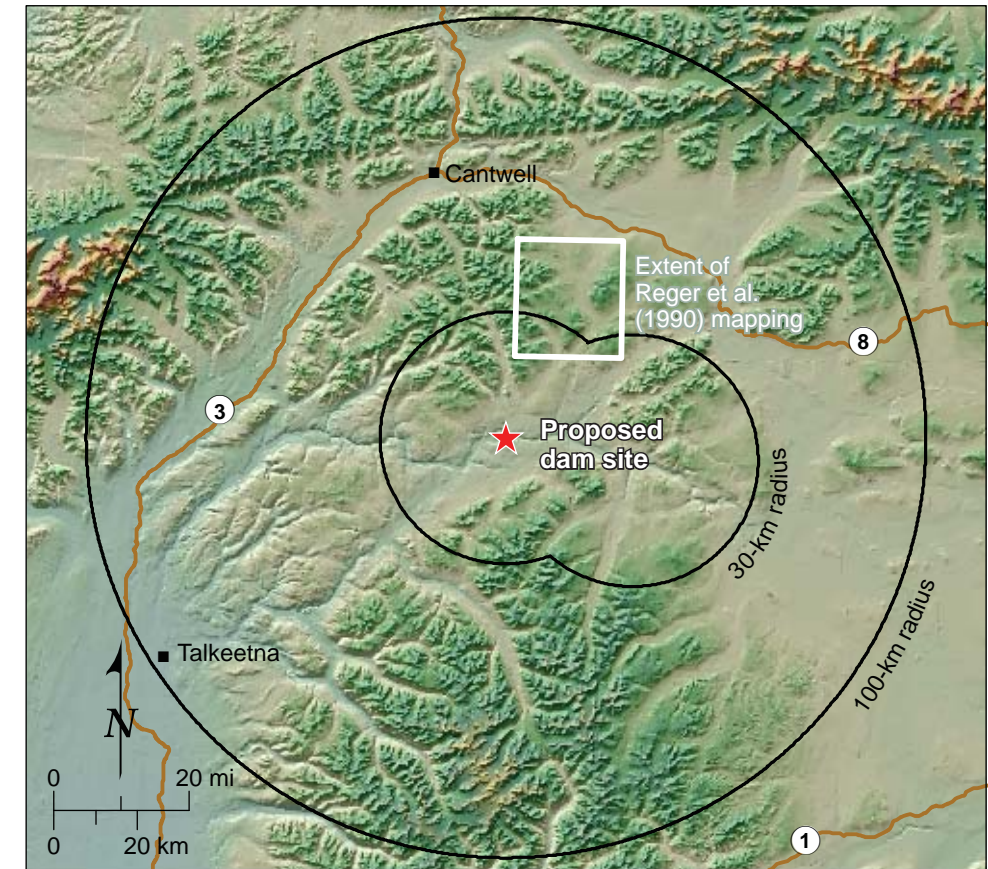
Appendix B:
Strip Maps and Photographic Documentation
of Lineament Data for Lineaments Mapped by Reger et al. (1990)

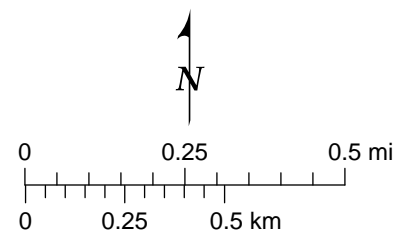
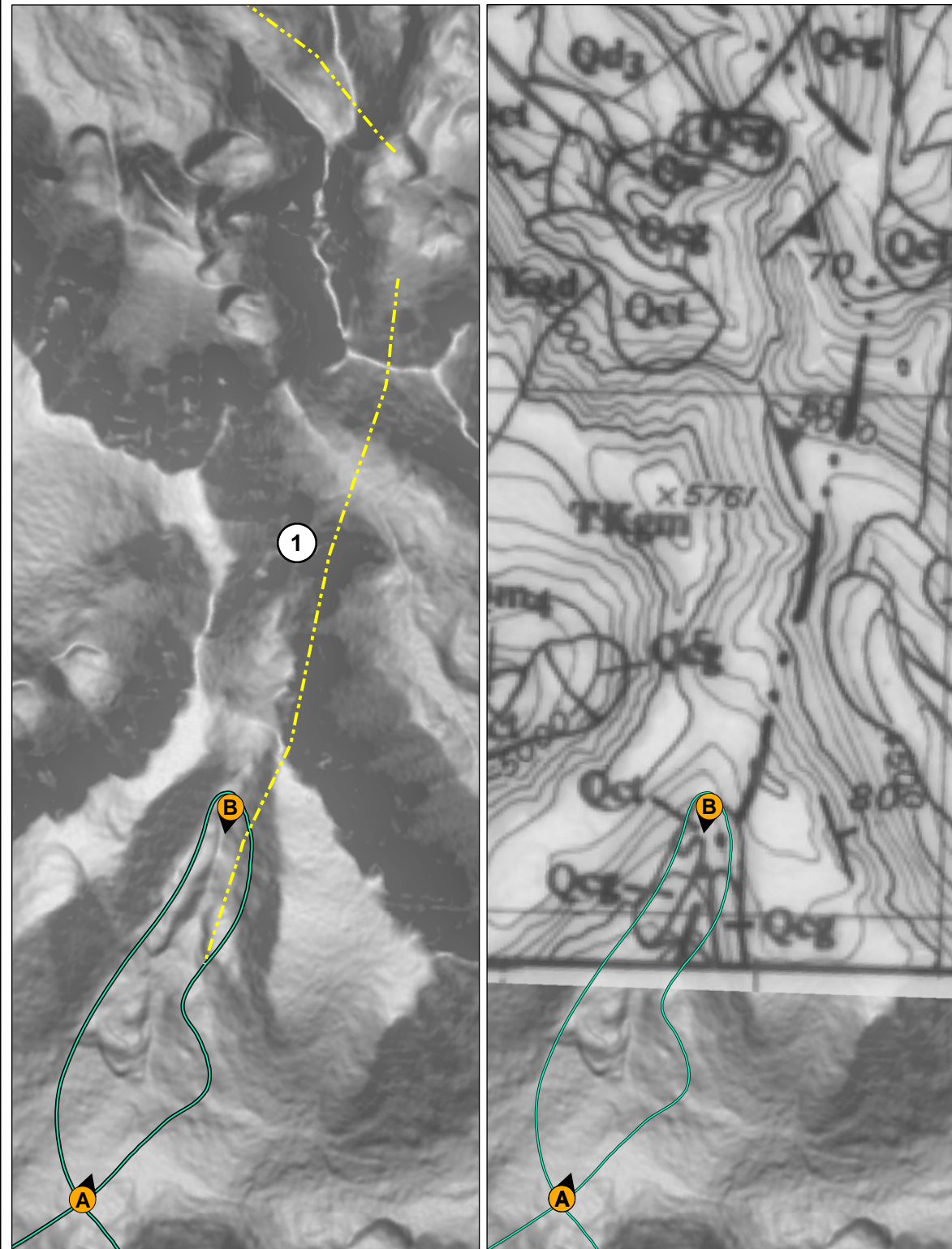
79_218900_Alaska_Railbelt/2189_Lineament Report October 2013, modified 12.19.13



- Explanation**
- ① Feature ID
- GPS track
- 21a** No previously mapped fault or lineament coincides with lineament group
- Features (Reger et al., 1990)*
- Photo lineament
- Fault (dashed where inferred)

Feature Number	Appendix B Figure Number
1	B-02
2	B-03
3	B-04
4	B-05
5	B-05
6	B-06
7	B-07a, B-07b
8	B-07a, B-07b
9	B-08
10	B-09a, B-09b
11	B-10
12	B-10
13	B-11a
14	B-11a
15	B-11a, B-11b
16	B-11a, B-11b
17	B-12a
18	B-12a, B-12b
19	B-12a, B-12b
20	B-12a, B-12b
21	B-13
22	B-14a, B-14b
23	B-14a, B-14b
24	B-15
25	B-15
26	B-16
27	B-16
28	B-17



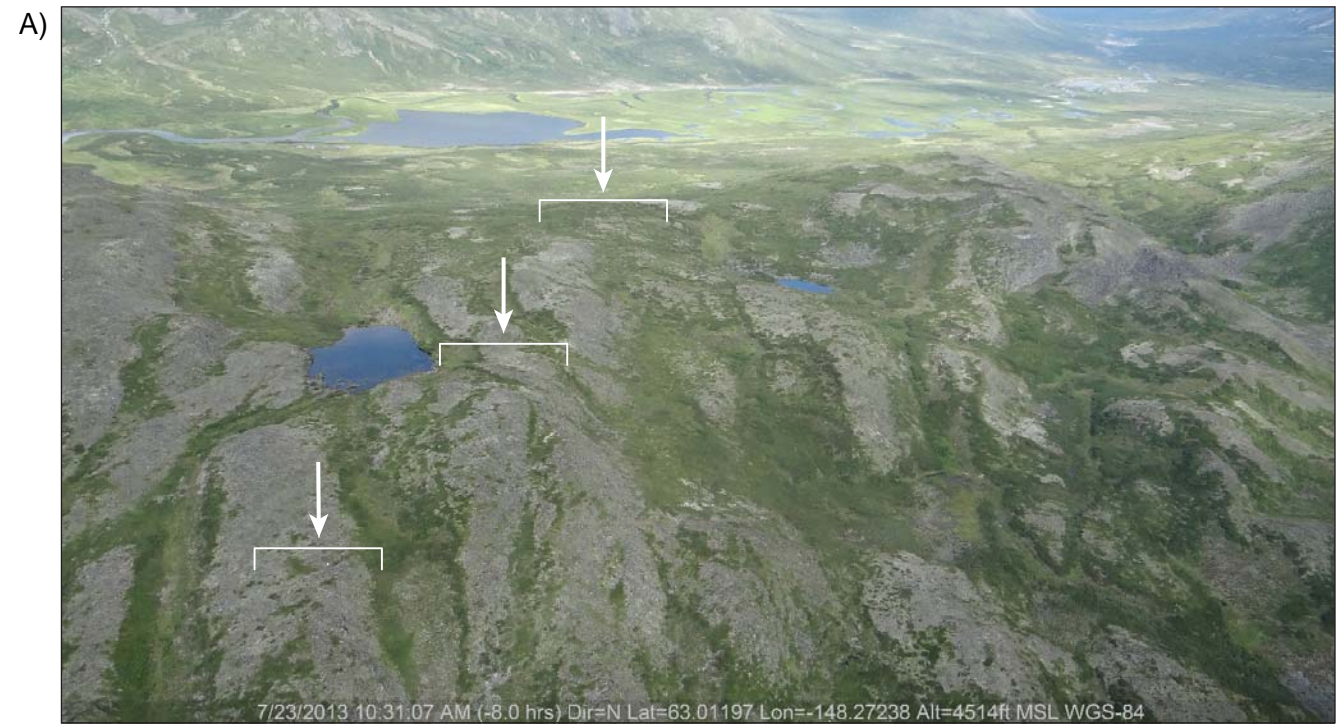
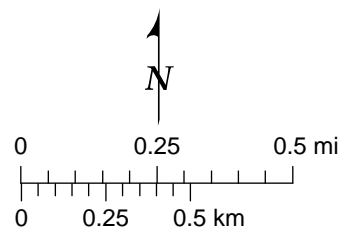
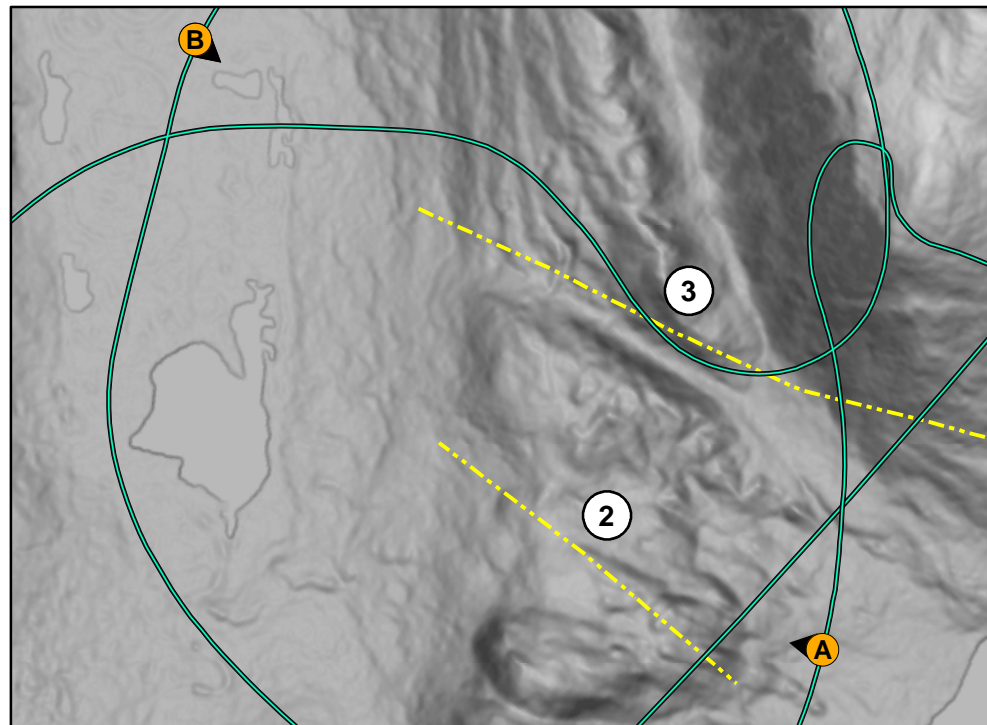


View looking northeast from location A. Arrows show location of mapped trace of lineament.

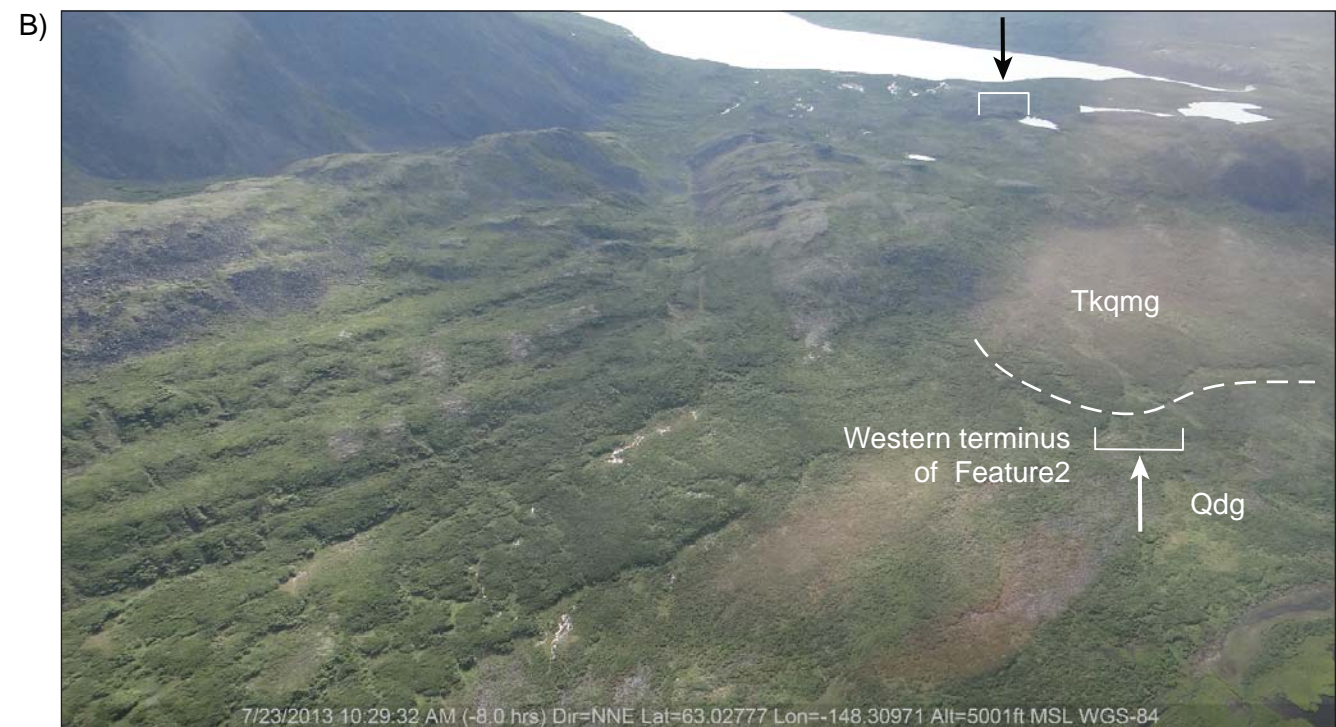


View looking southwest from location B. Arrows show the location of lineament. Note the semi-linear and lobate toe of talus deposit.

DRAFT

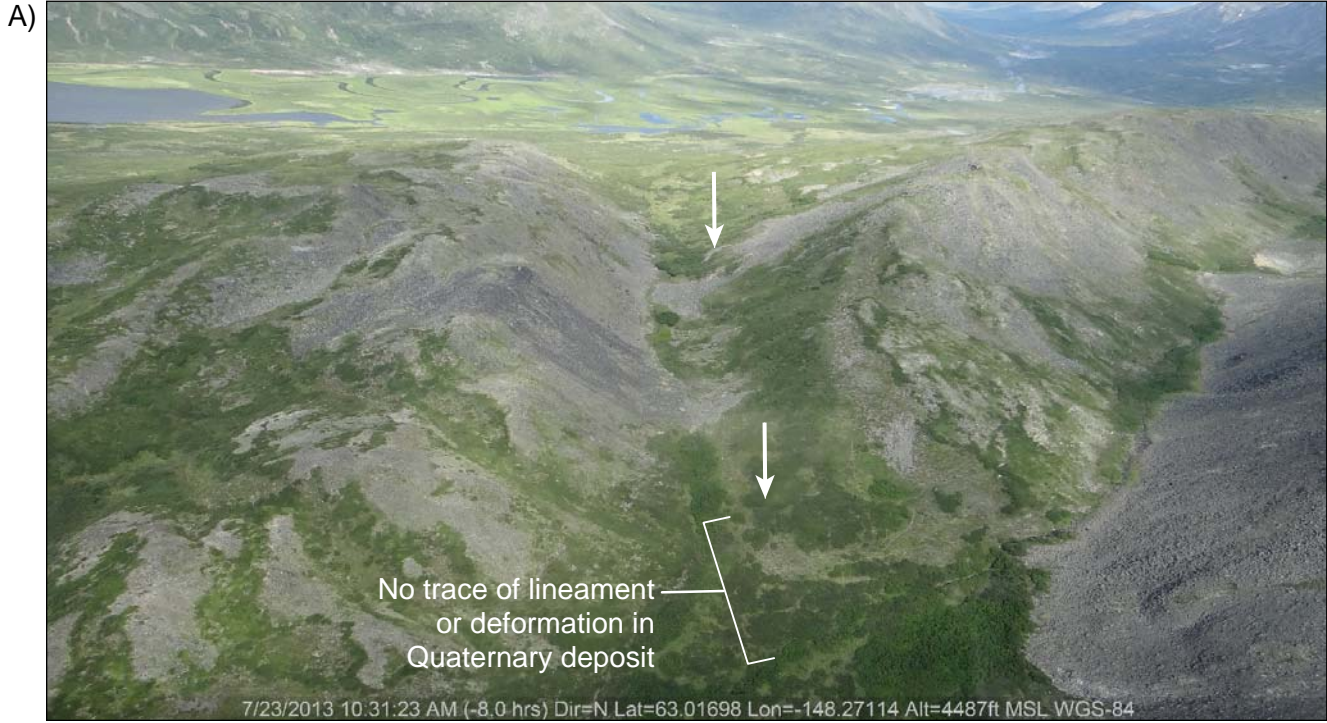
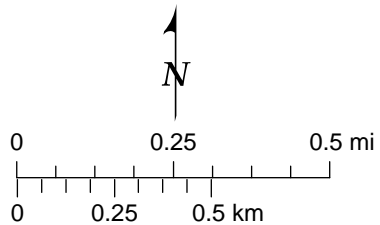
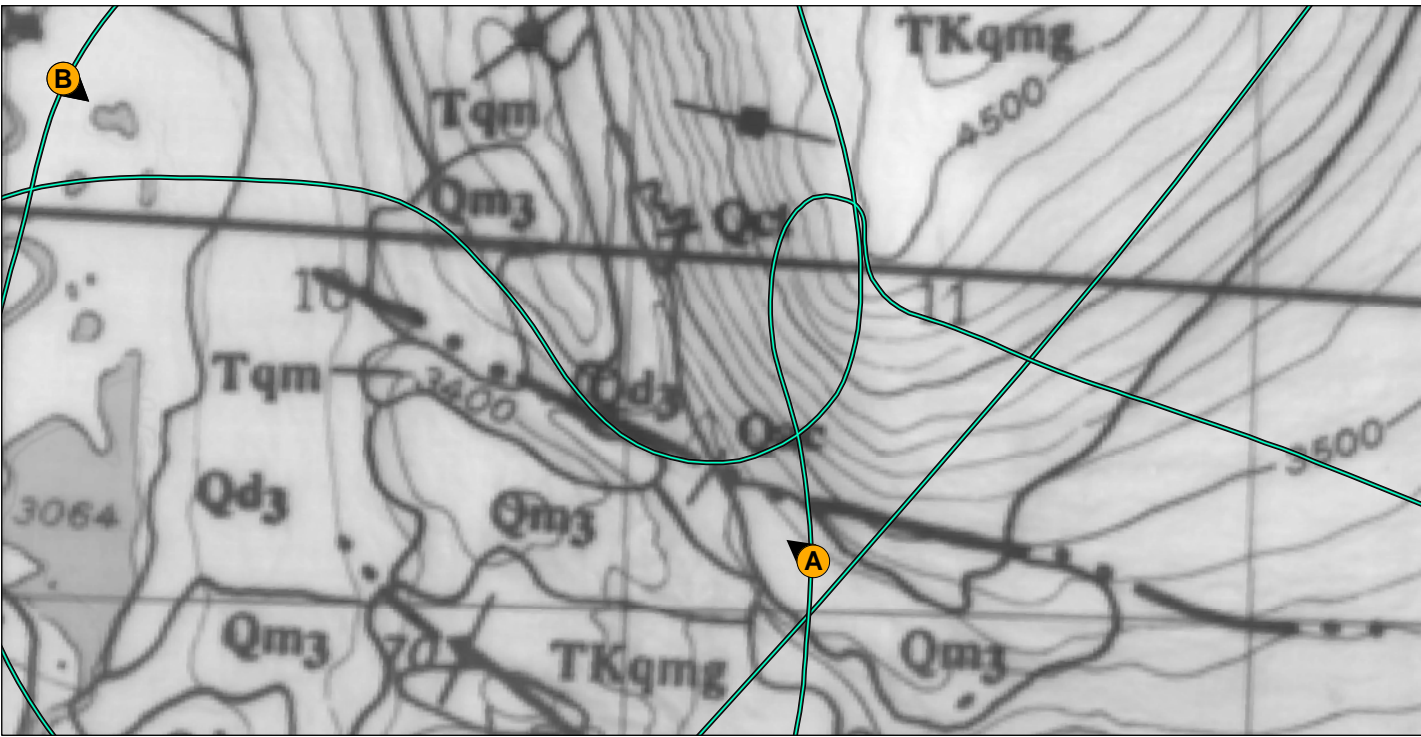
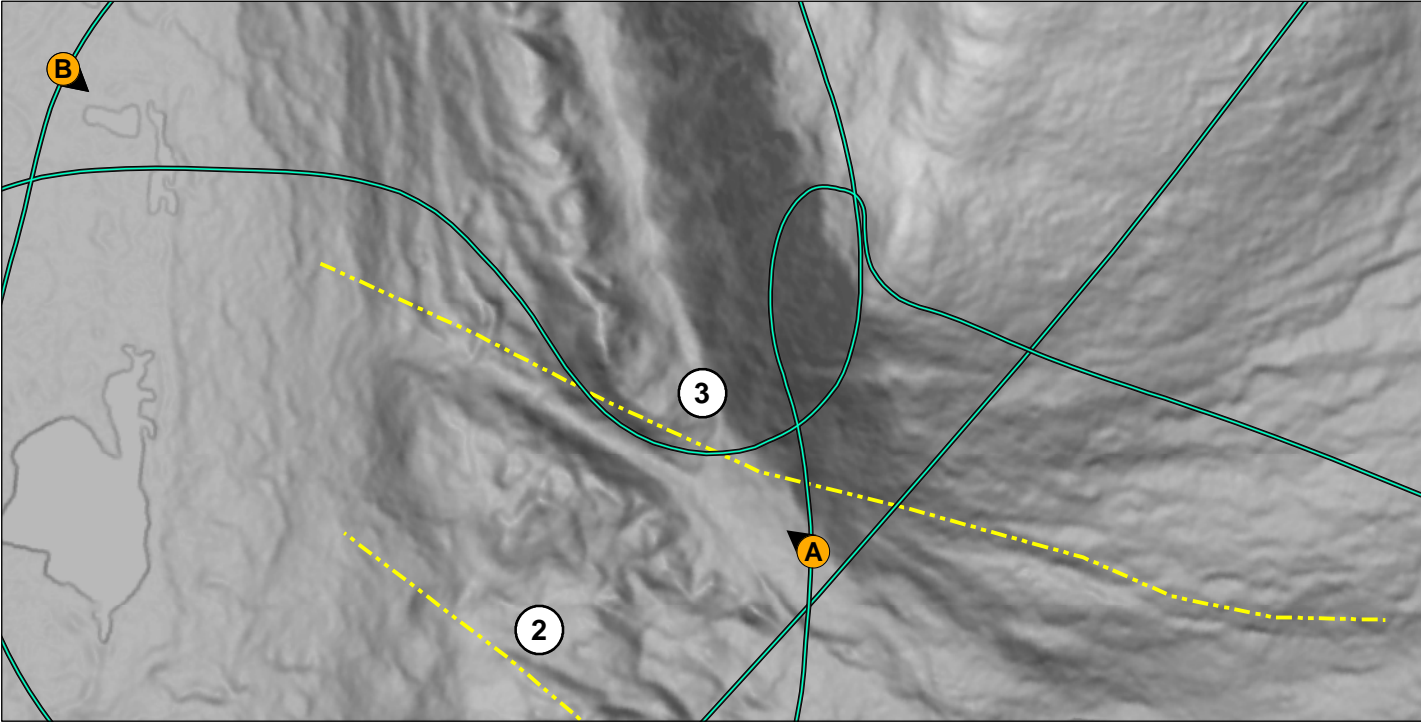


View looking northwest from location A. Arrows and brackets show projected trace of lineament. Note absence of continuous lineament across projected trace.

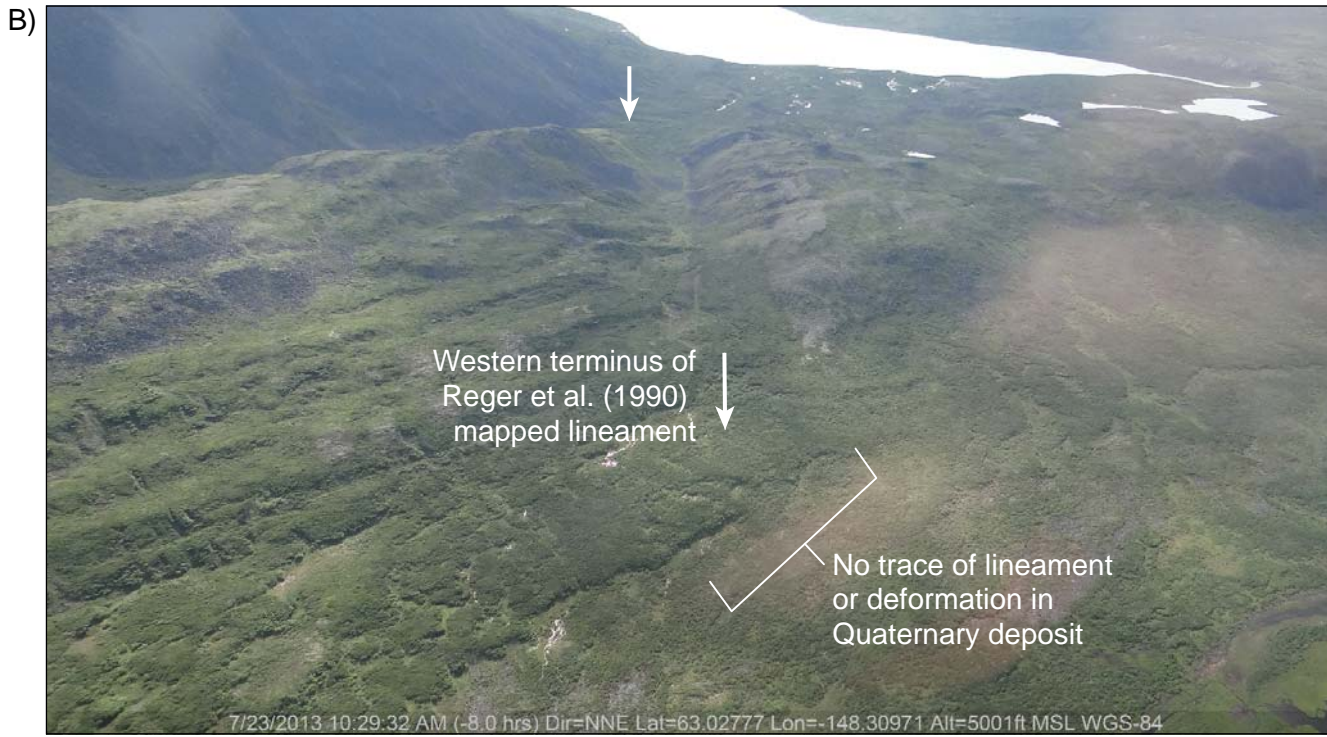


View looking southeast from location B. Arrows and brackets show projected trace of lineament. Note lack of deformation or lineament trace in foreground within Quaternary deposits.

DRAFT

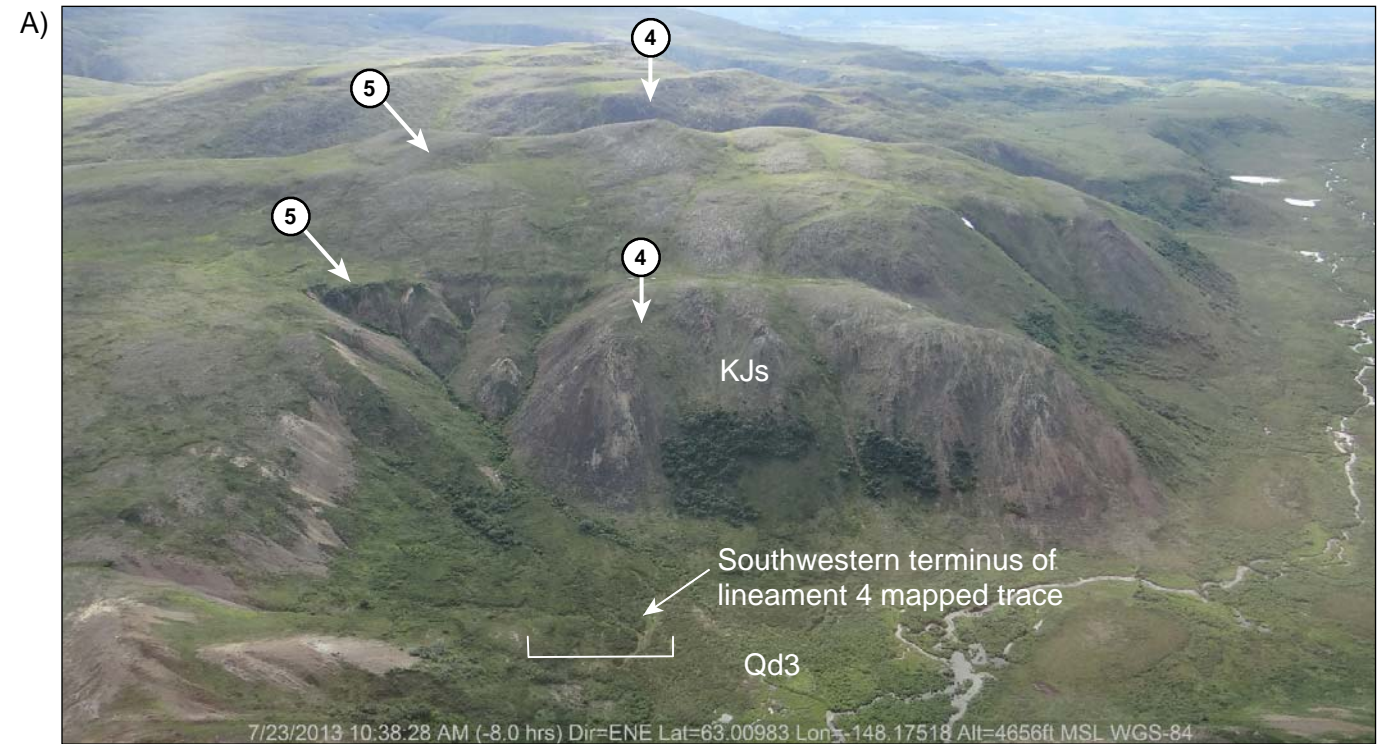
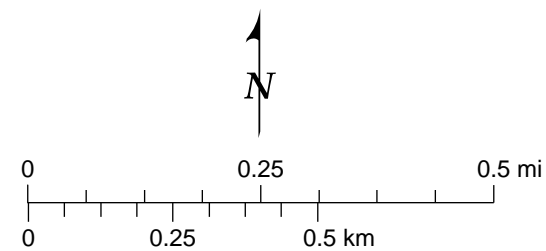
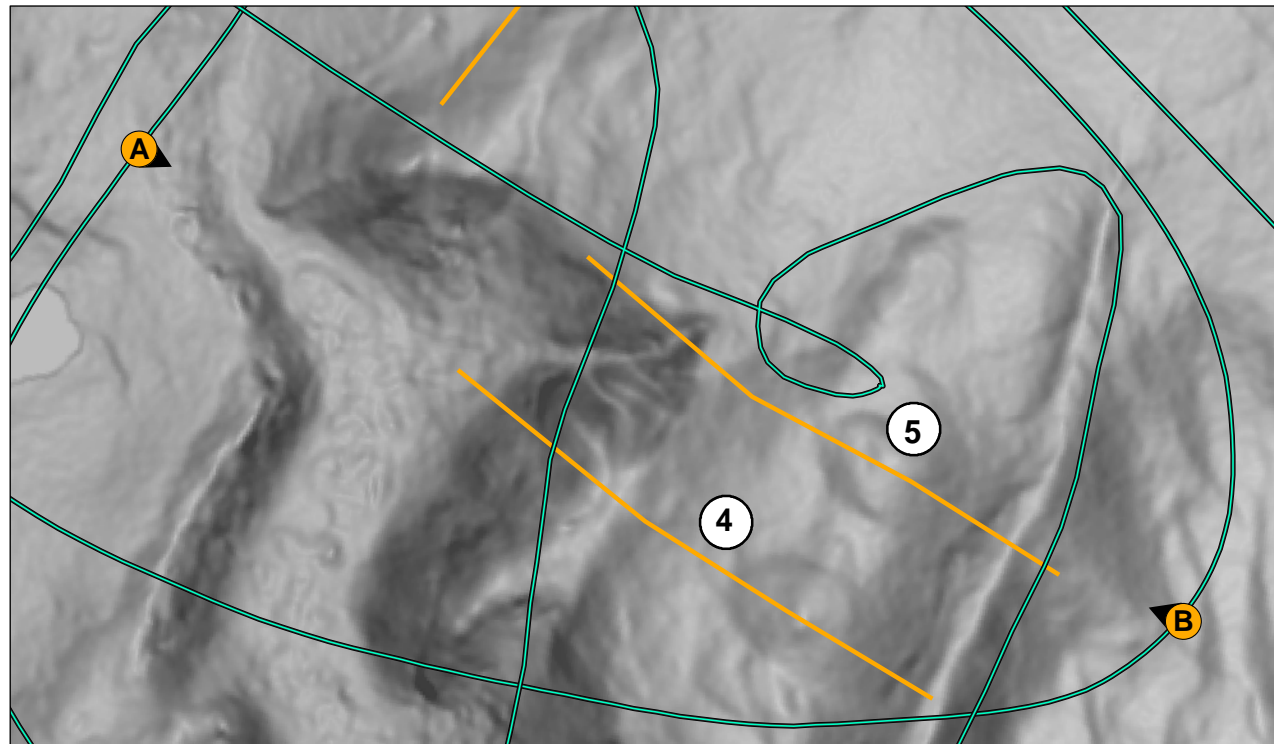


View looking northwest from location A. Arrows show the projected trace of lineament. Note absence of lineament or deformation in Quaternary deposits.

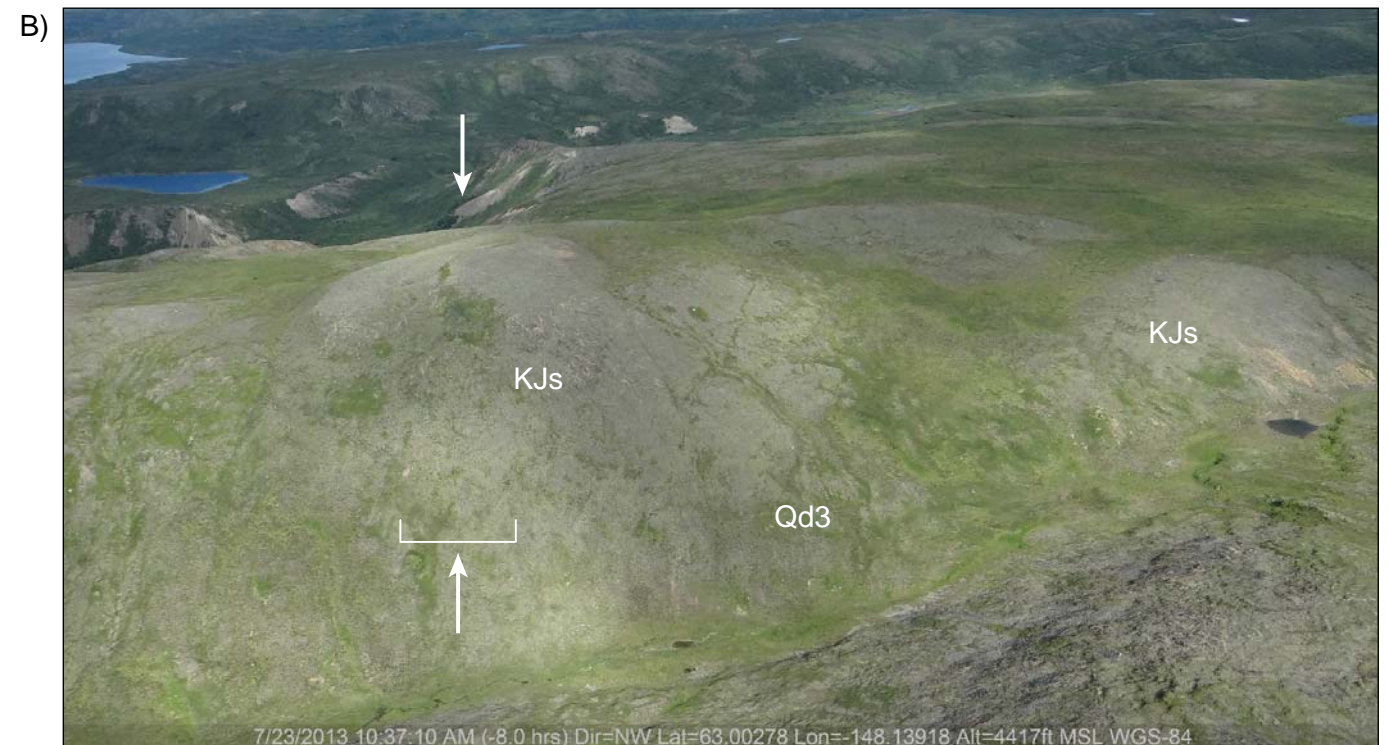


View looking southeast from location B. Arrows show the projected trace of lineament. Note absence of lineament or deformation in Quaternary deposits.

DRAFT

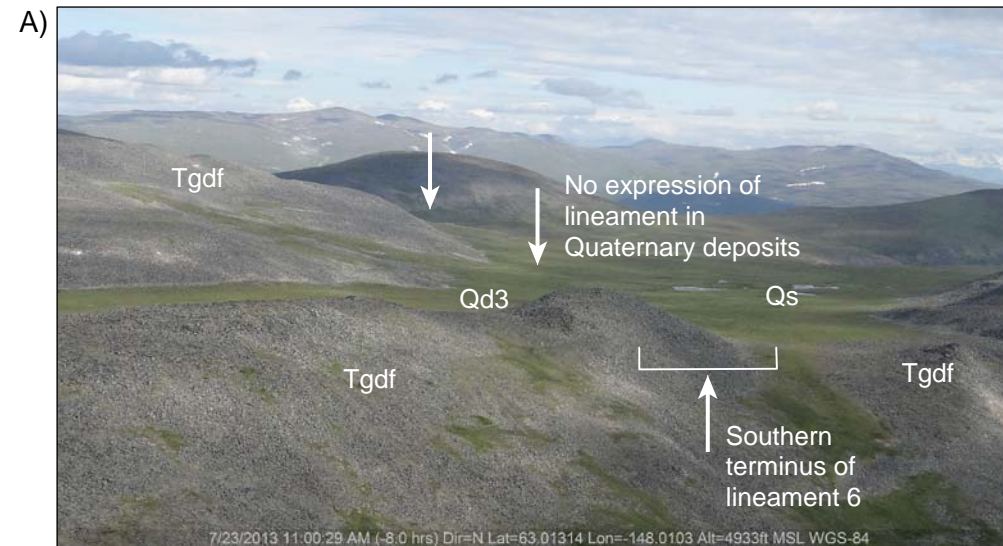
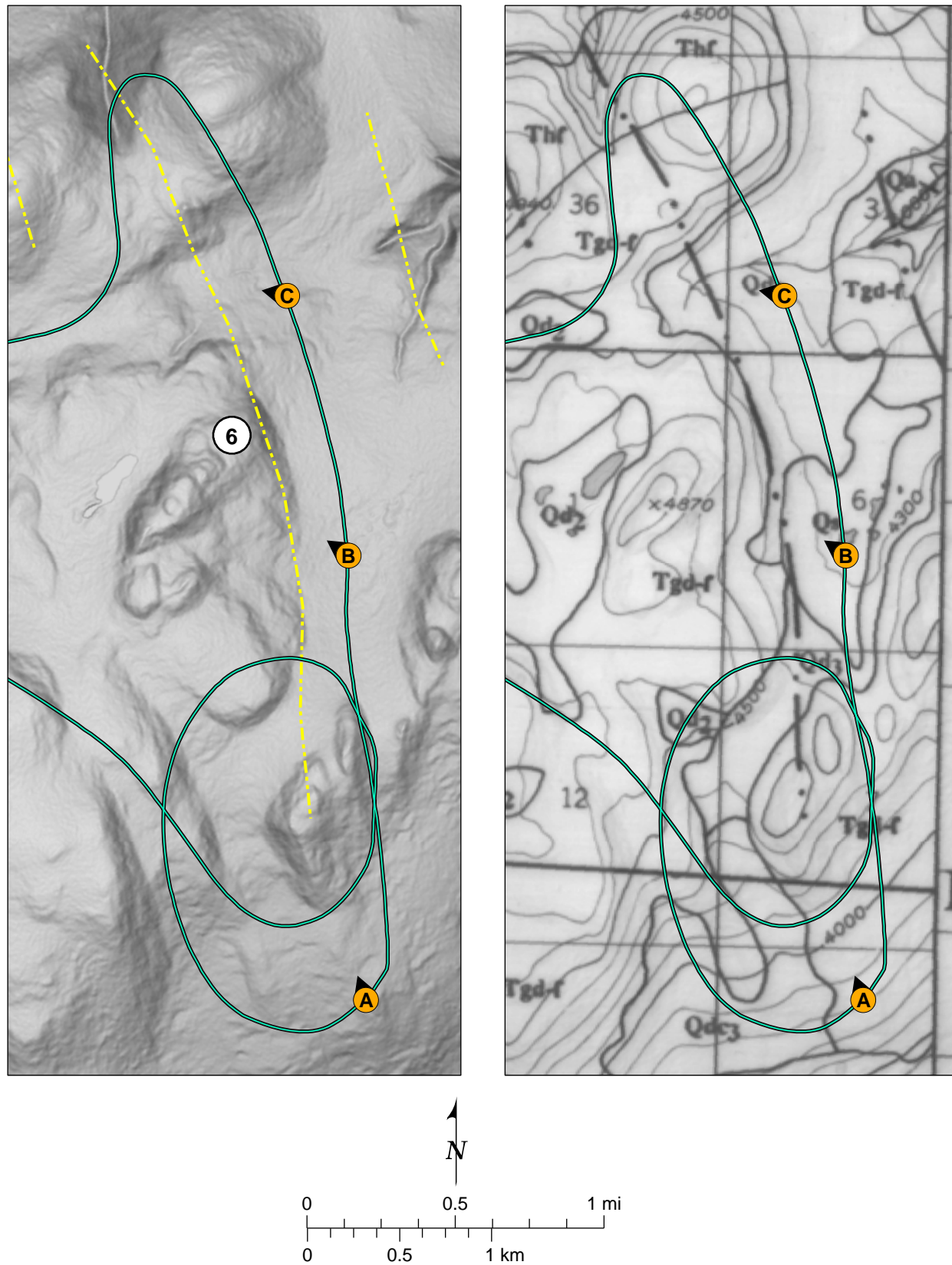


View looking southeast from location A. Arrows show the projected traces of Features 4 and 5. Note absence of lineament or deformation in Quaternary deposits in foreground.



View looking northwest from location B. Arrows show the projected trace of Feature 5. Note absence of discernable lineament along mapped trace.

DRAFT



View looking northwest from location A. Arrows and brackets show the projected trace of mapped lineament. Note absence of lineament or deformation in Quaternary deposits.

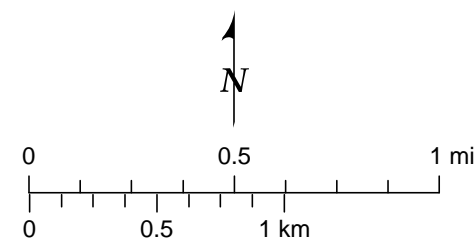
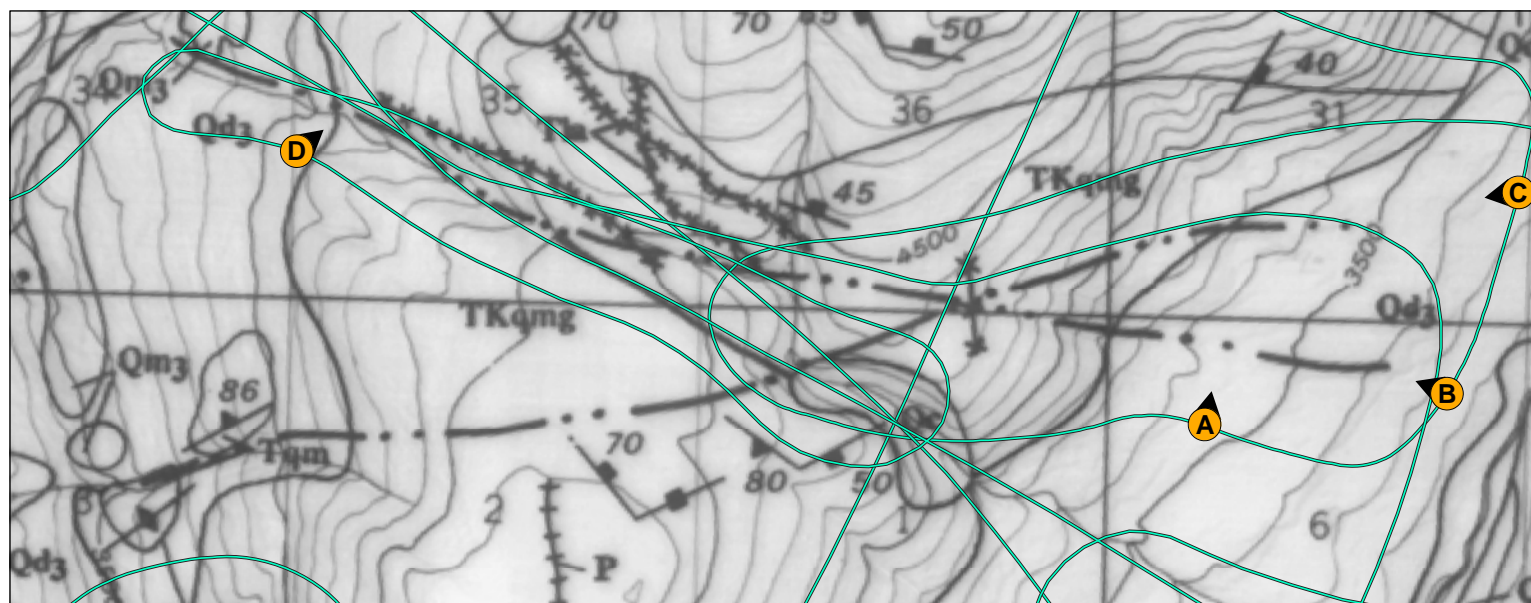
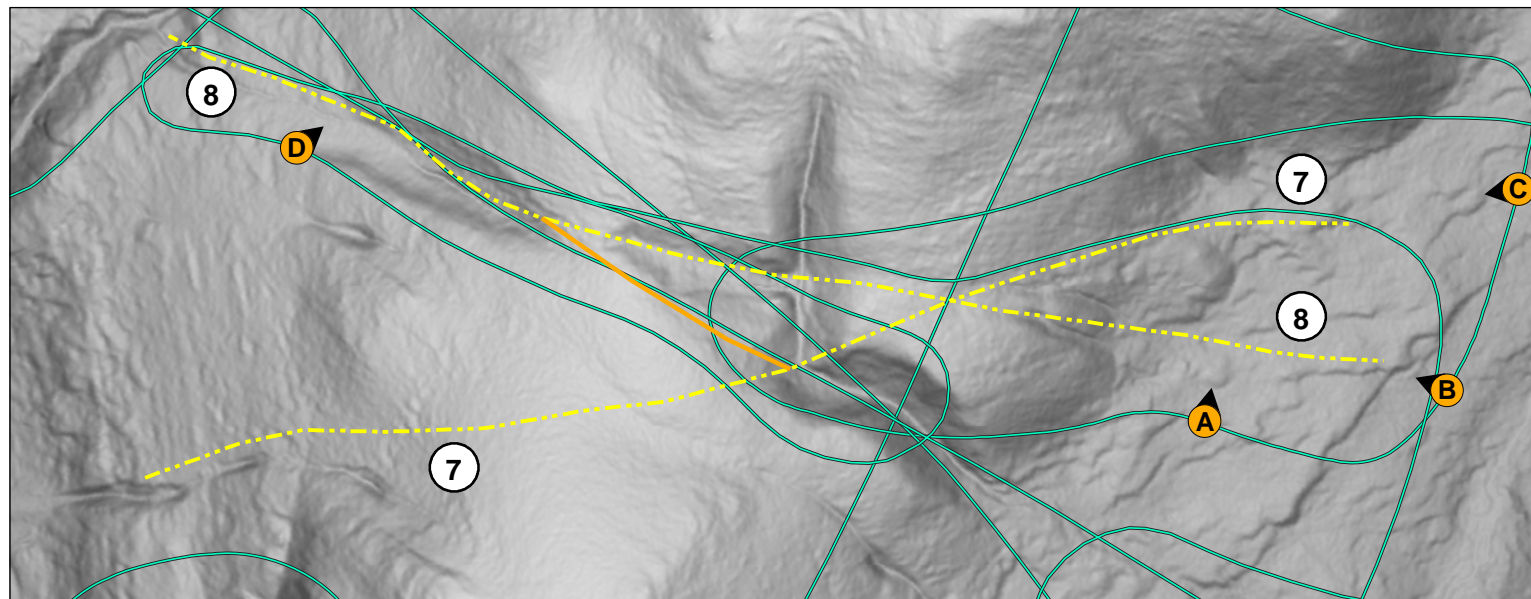


View looking northwest from location B. Arrows show the projected trace of lineament.

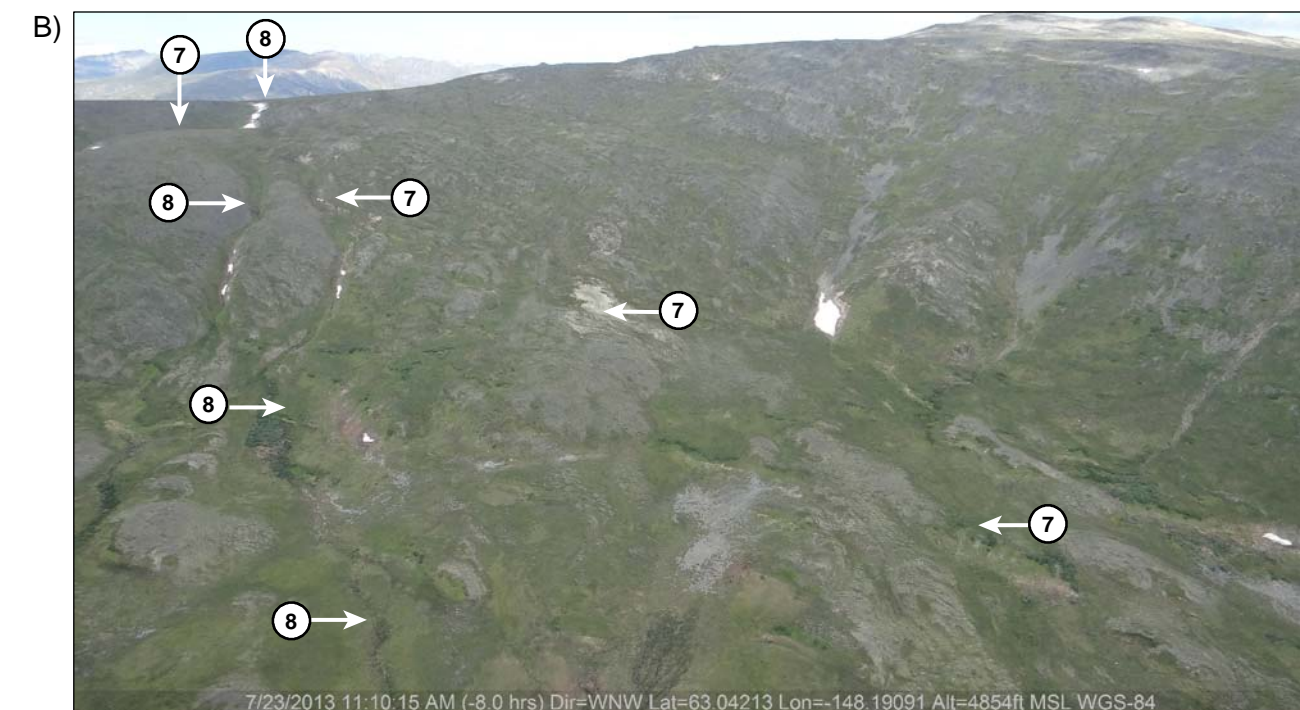


View looking west from location C. Brackets indicate the projected trace of lineament. Note absence of lineament or deformation in Quaternary deposits.

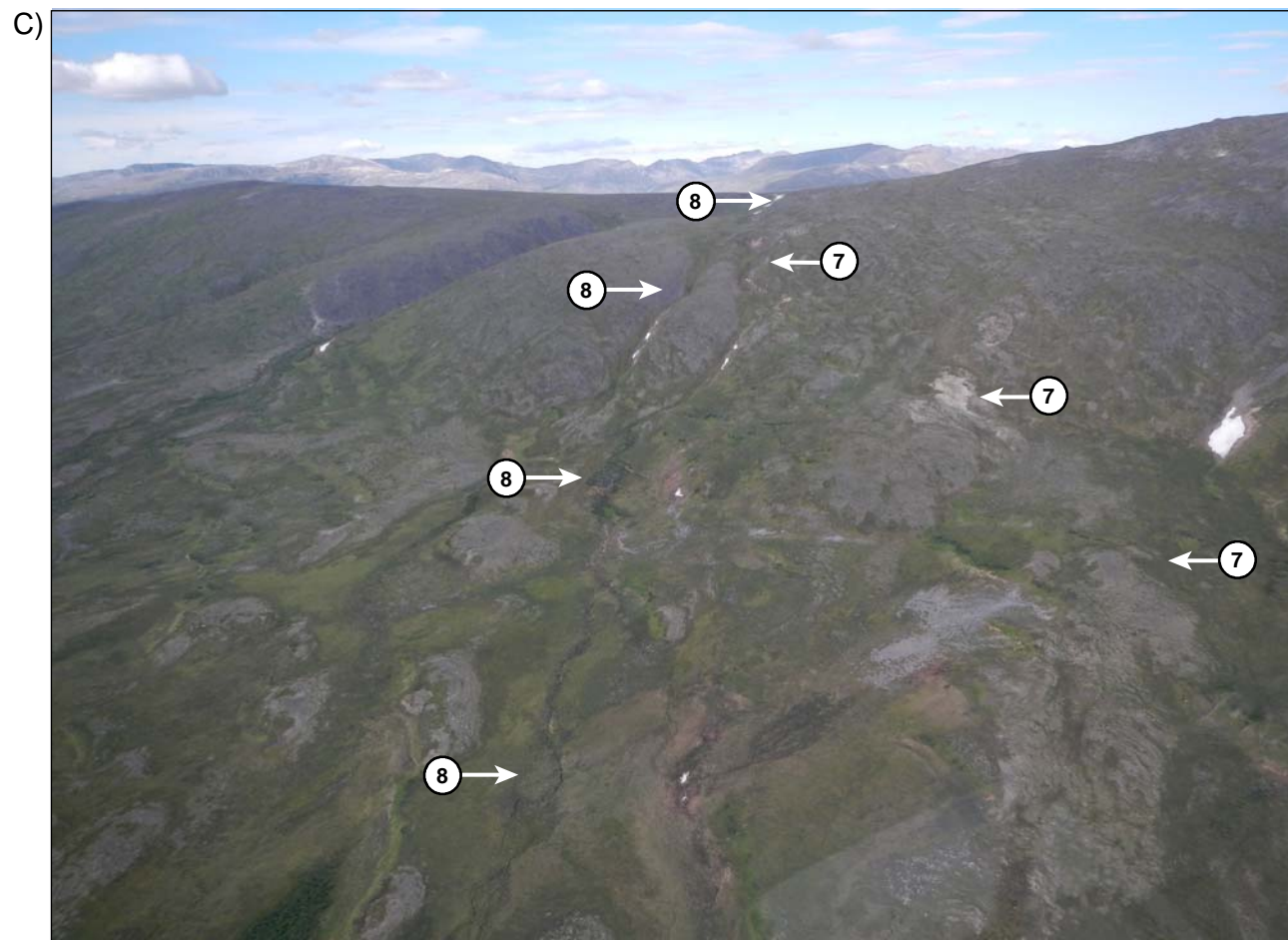
DRAFT



View looking northeast at lineaments 7 and 8 from photograph location A.



View looking west at lineaments 7 and 8 from photograph location B. Note that lineament 7 is a linear series of unrelated features.



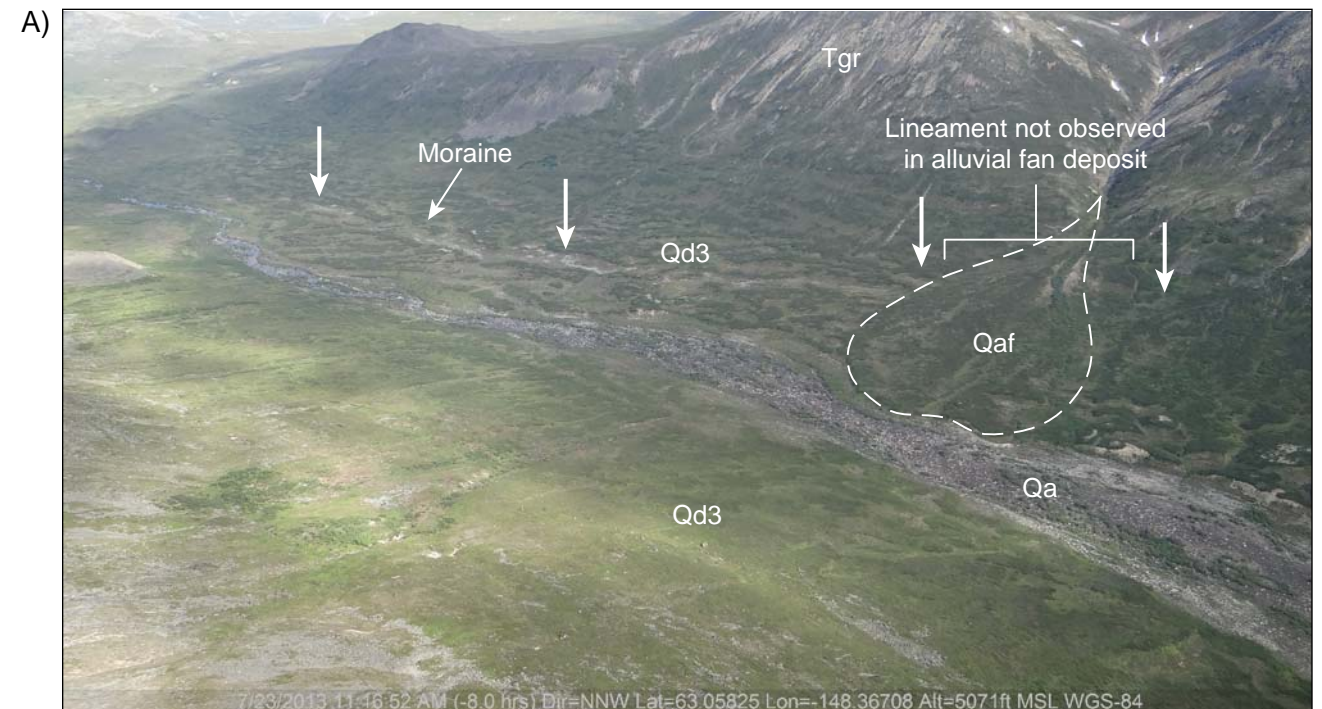
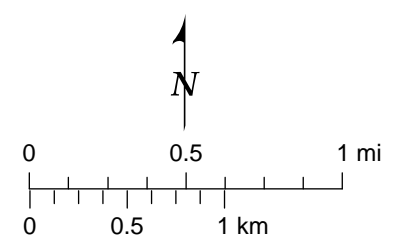
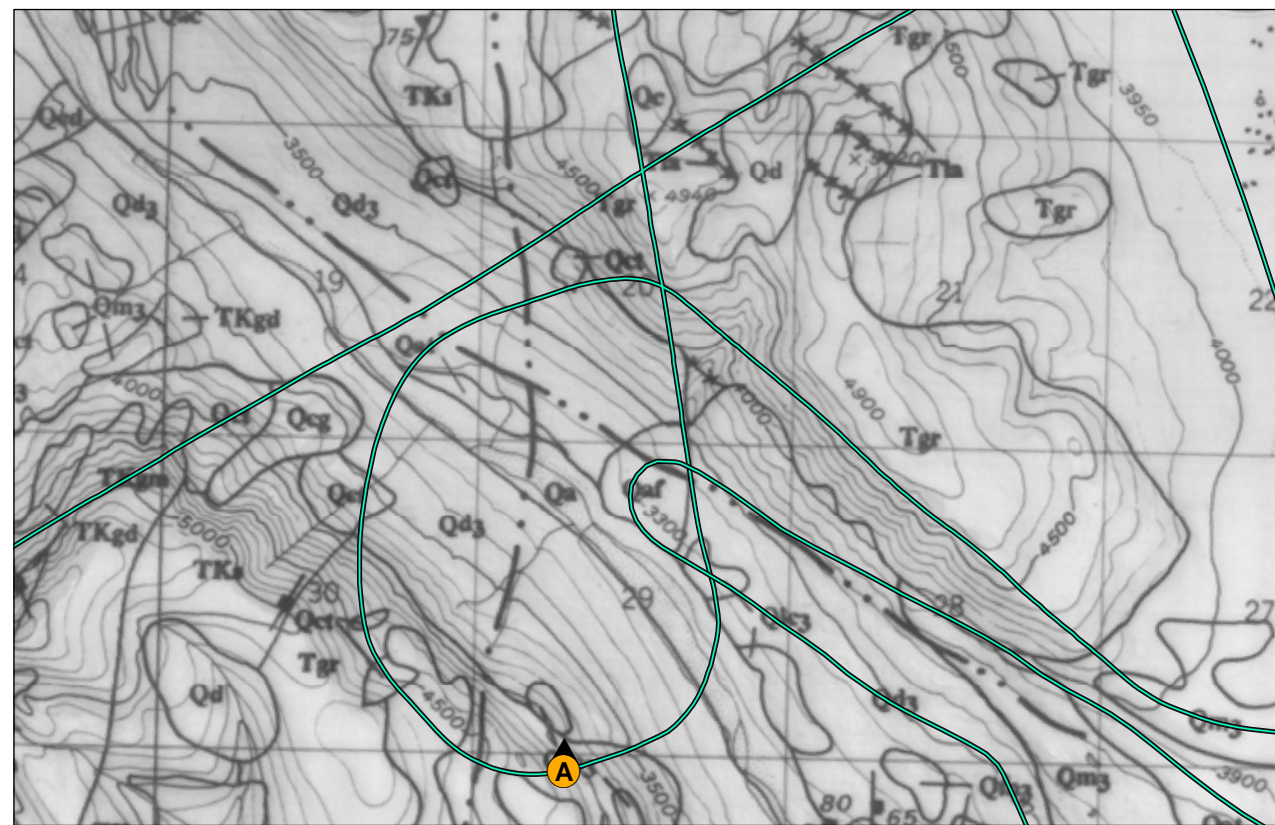
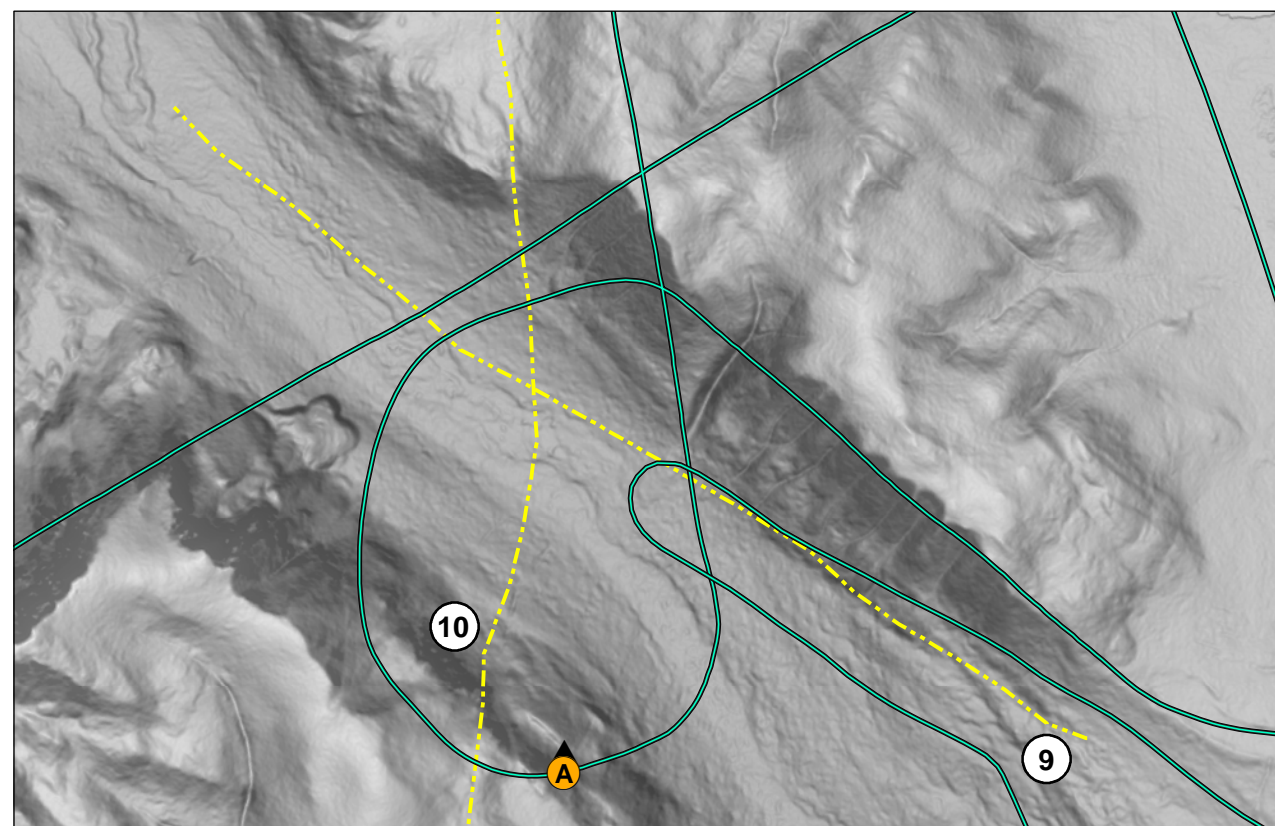
View looking southwest at lineaments 7 and 8 from photograph location C.



View looking northeast at lineament 7 from photograph location D.

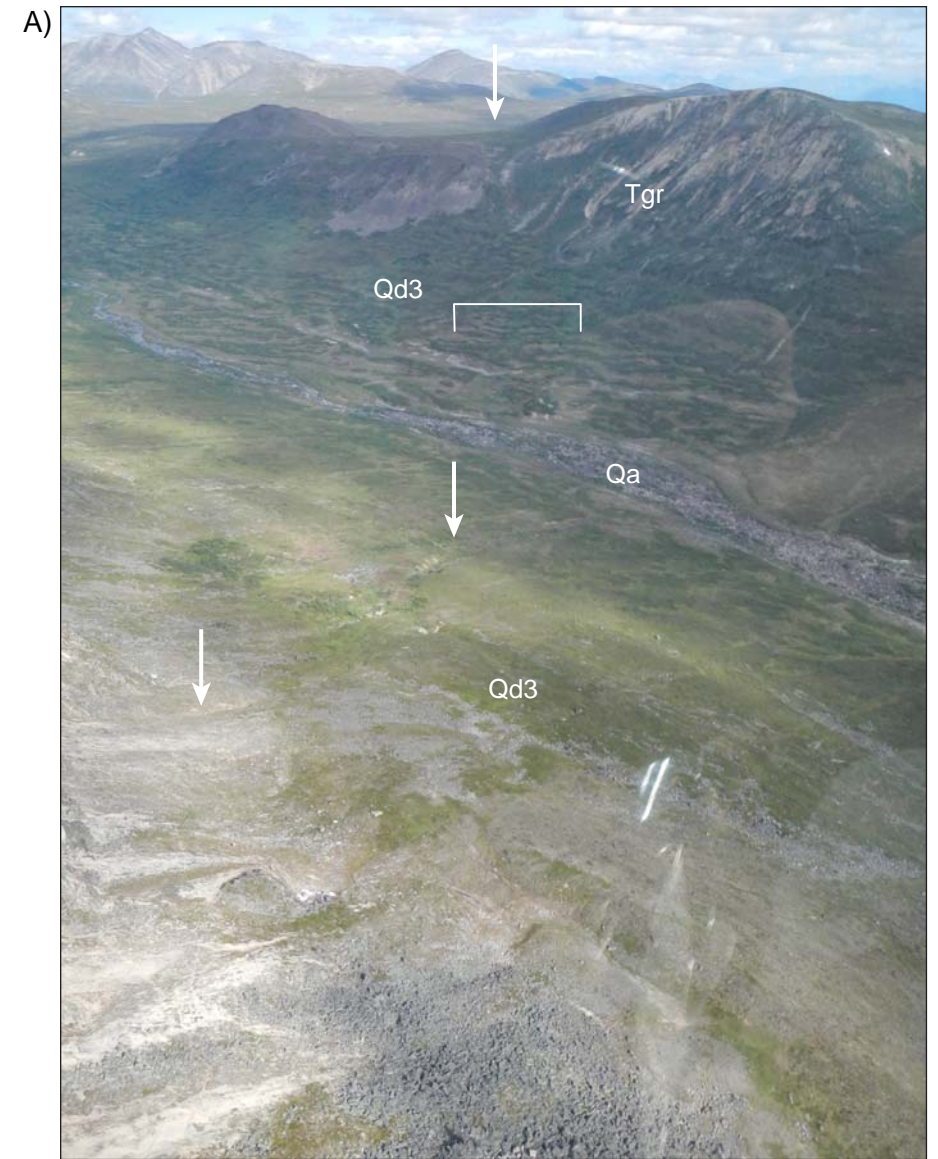
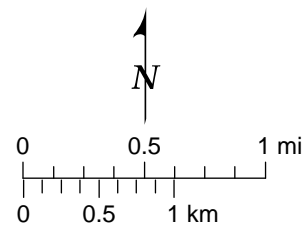
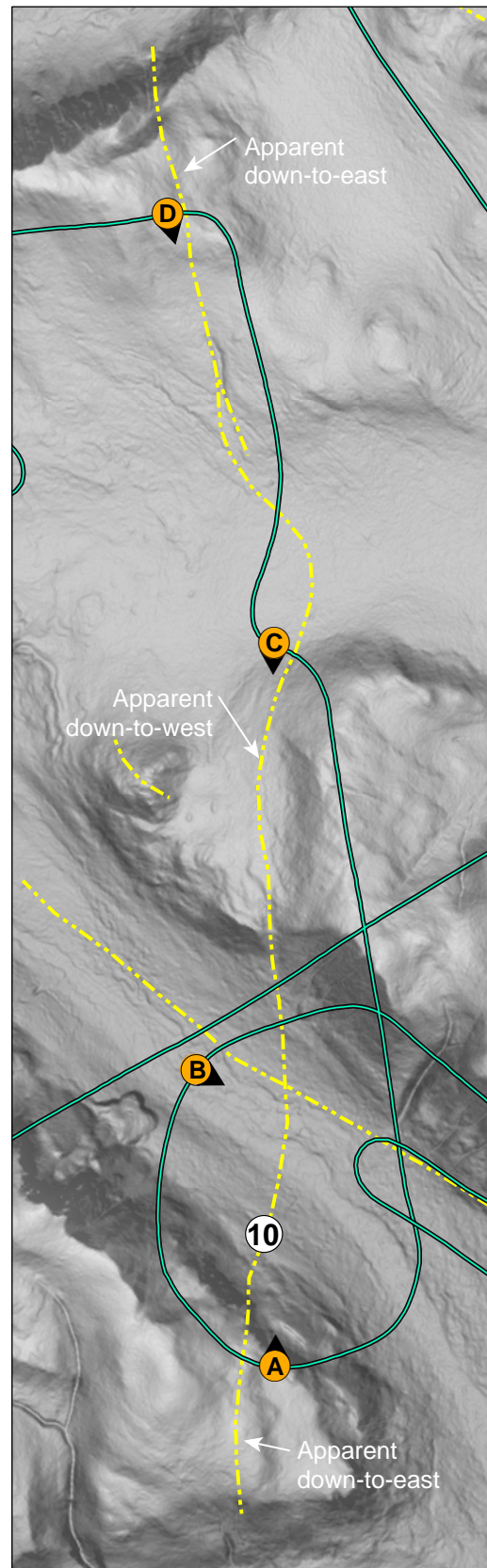
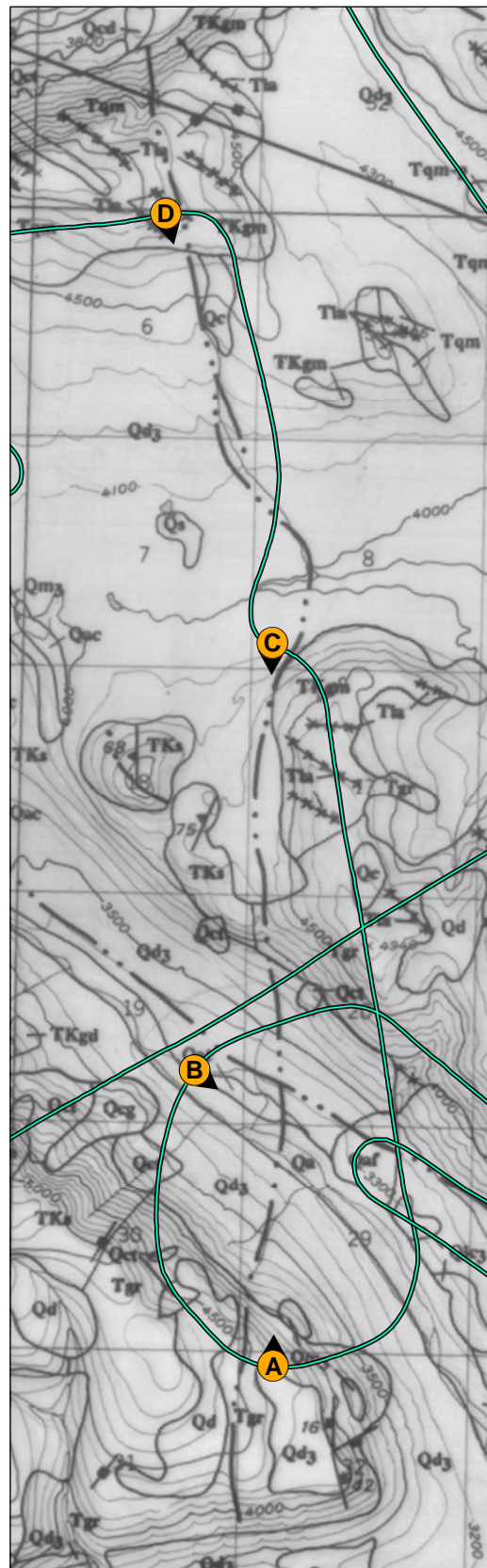
DRAFT

79_218900 Alaska_Railbelt/2189_Lineament Report October 2013, modified 10.18.13



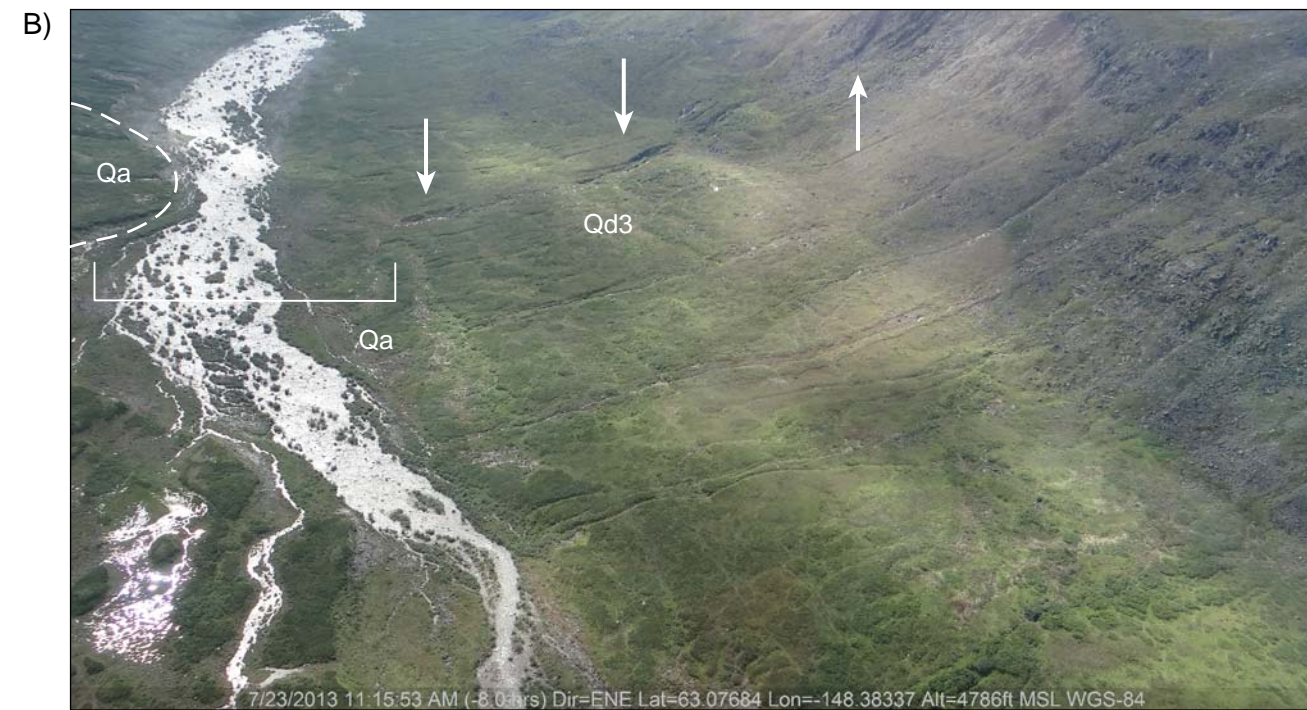
View looking north from location A. Arrows show projected trace of Feature 9 lineament. Note lineament is overprinted with Quaternary alluvial fan deposit.

DRAFT



View looking north from location A. Arrows and brackets show the projected trace of lineament.

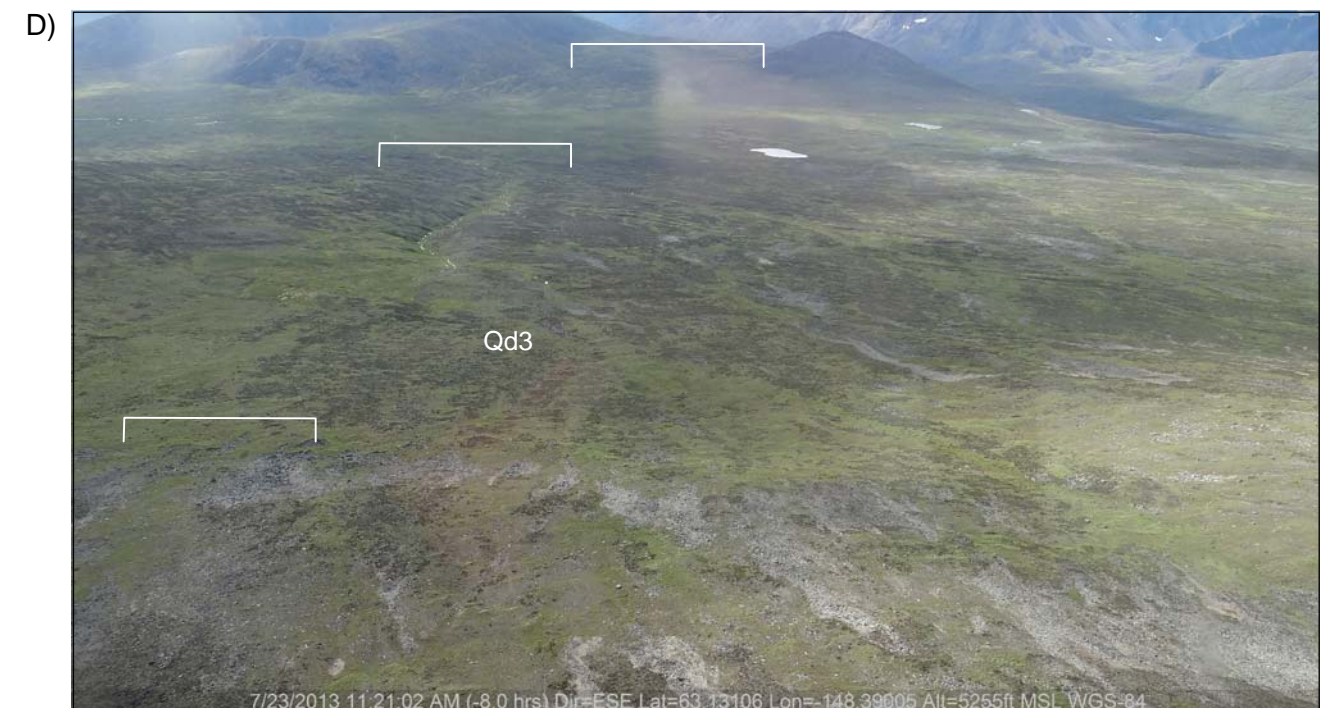
DRAFT



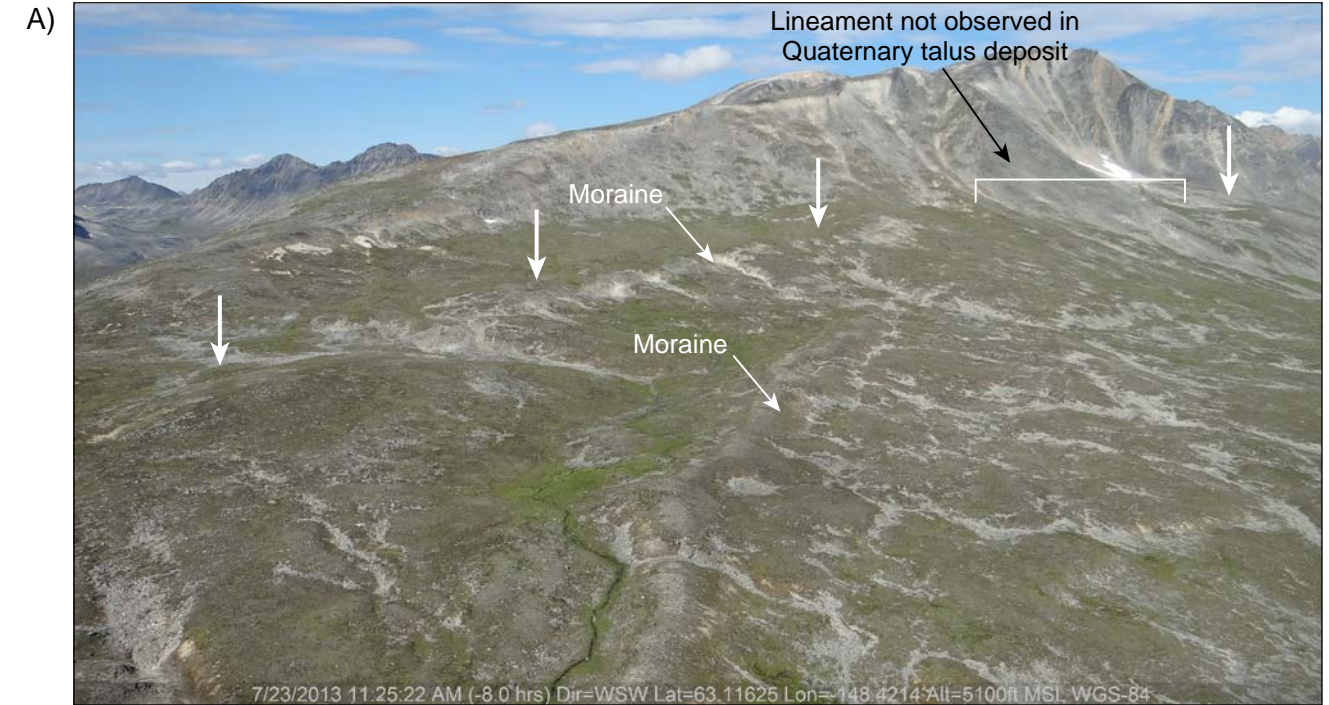
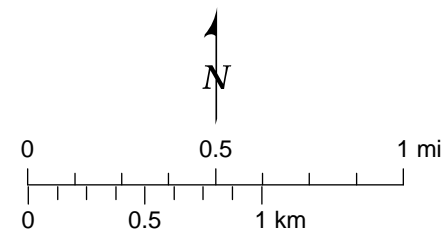
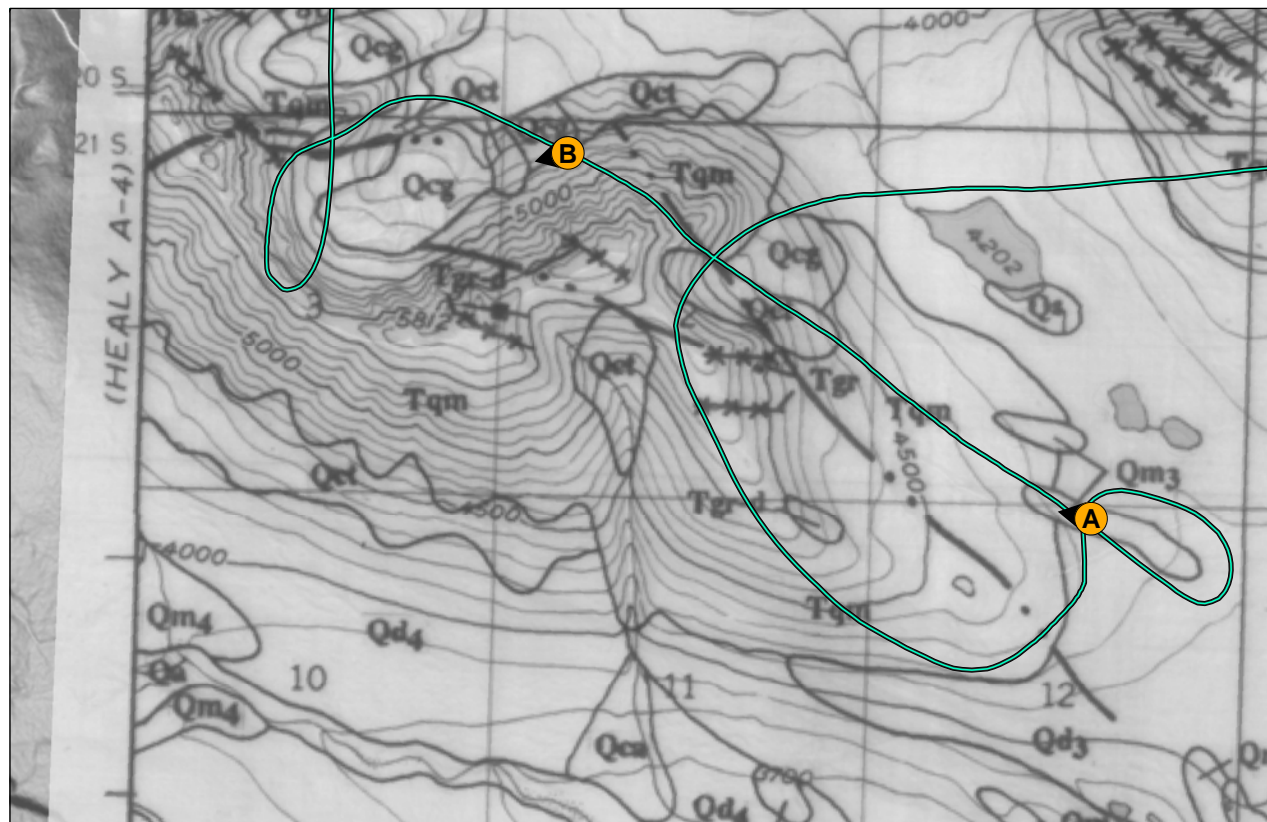
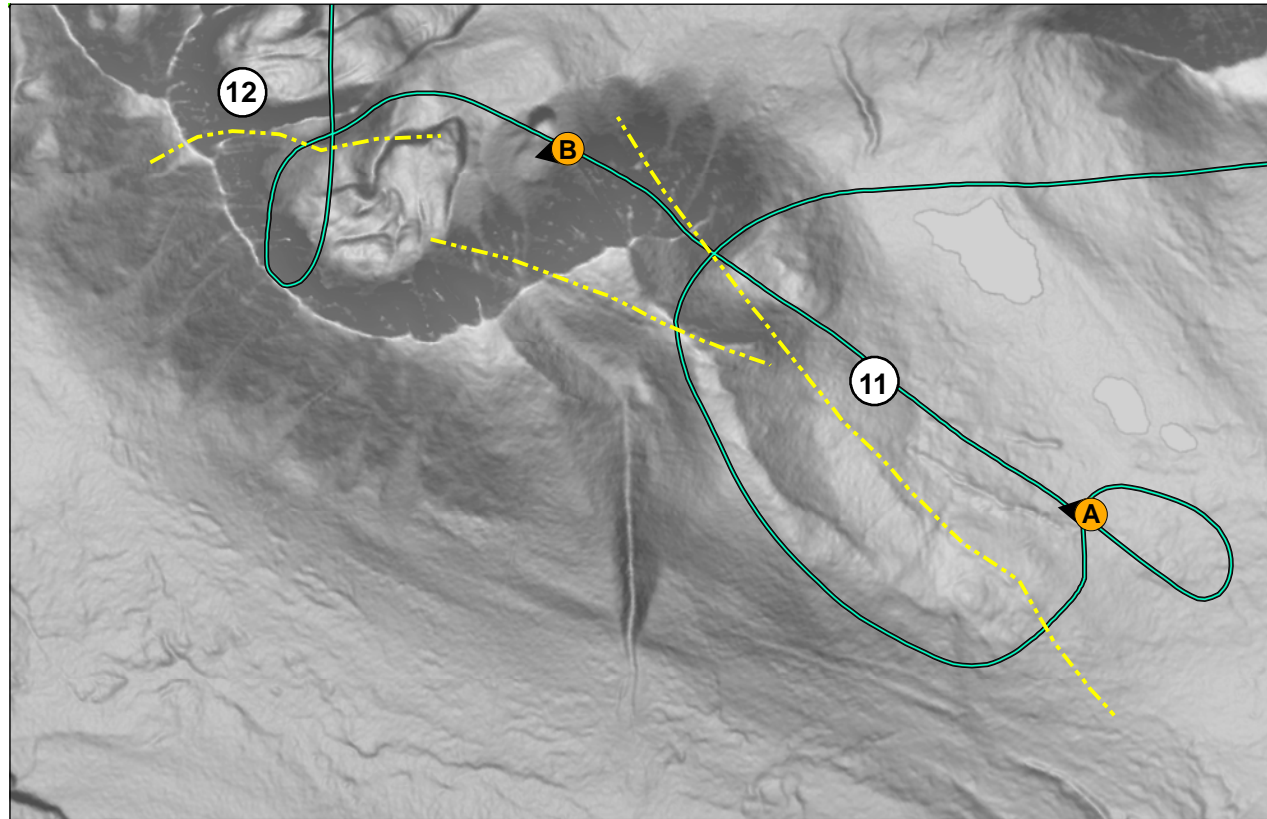
View looking south from photograph location B. Arrows show the projected trace of lineament. In Qd3 (till) the lineament is coincident with linear drainage in till deposit. Note absence of lineament in Qa deposit.



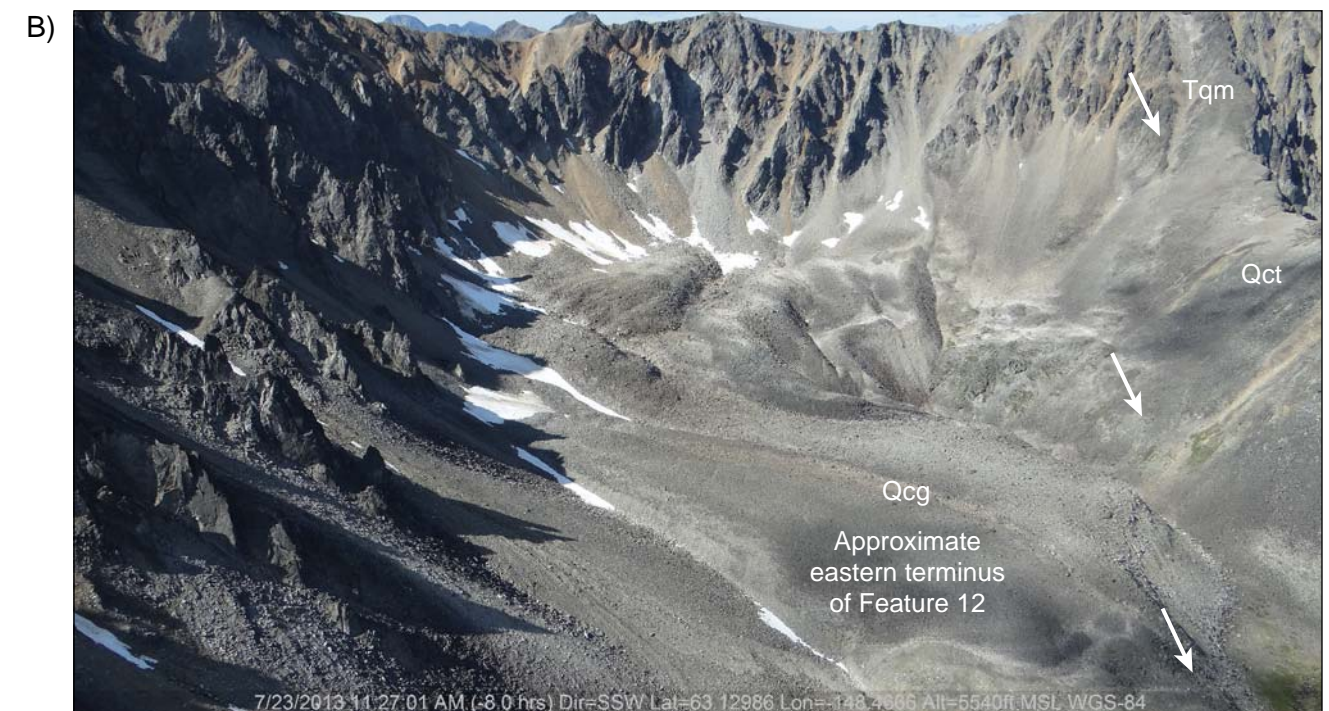
View looking south from photograph location C. Arrows show the projected trace of lineament. Note lineament is coincident with a linear drainage in this view.



View looking south from location C. Brackets show the projected trace of lineament.

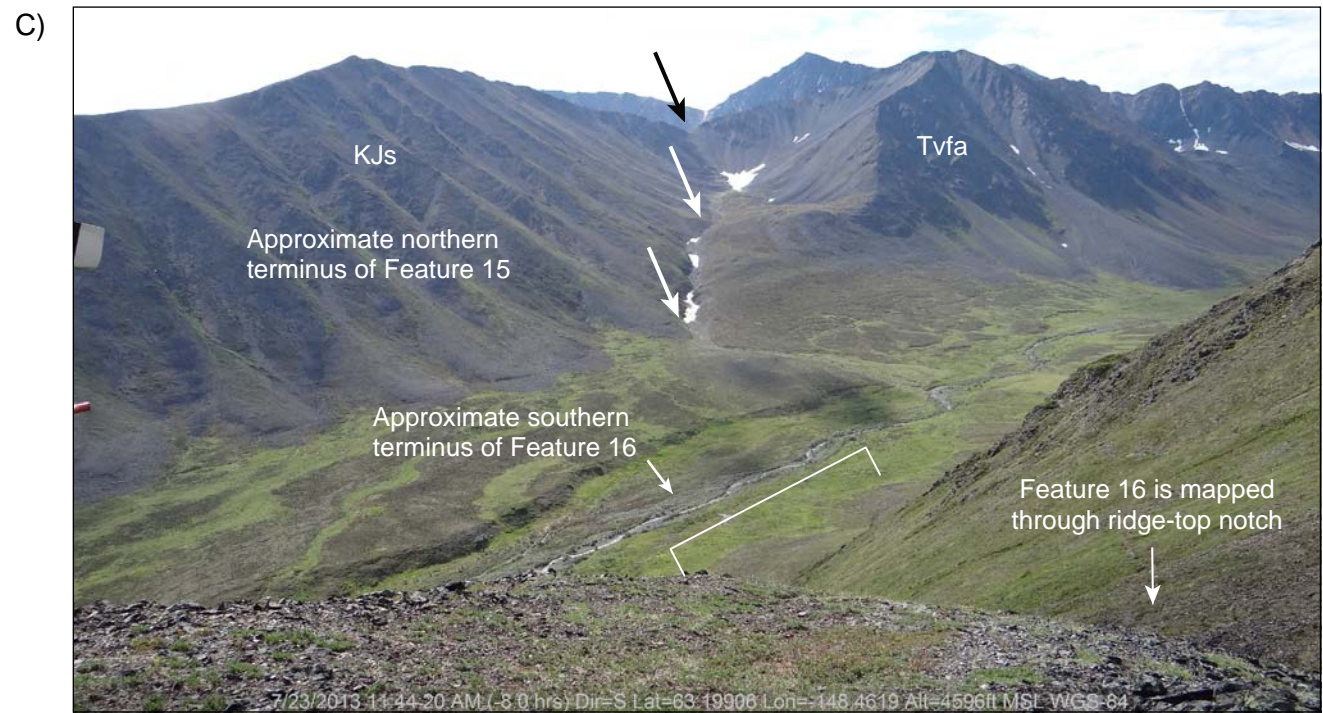


View looking west from location A. Arrows and brackets show projected trace of Feature 11 lineament. Note the mapped lineament correlates with a moraine crest.



View looking west from location A. Brackets show projected trace of Feature 12 lineament. Note the trace of the lineament is a collection of unrelated features rather than a through-going feature.

DRAFT



View looking south from location C. The arrows and bracket indicates the projected path of Feature 15 and 16 faults. Note absence of linear expression in valley floor within Quaternary deposits.

DRAFT