



View looking southeast at esker landform that projects across mapped lineaments and appears undeformed or offset.



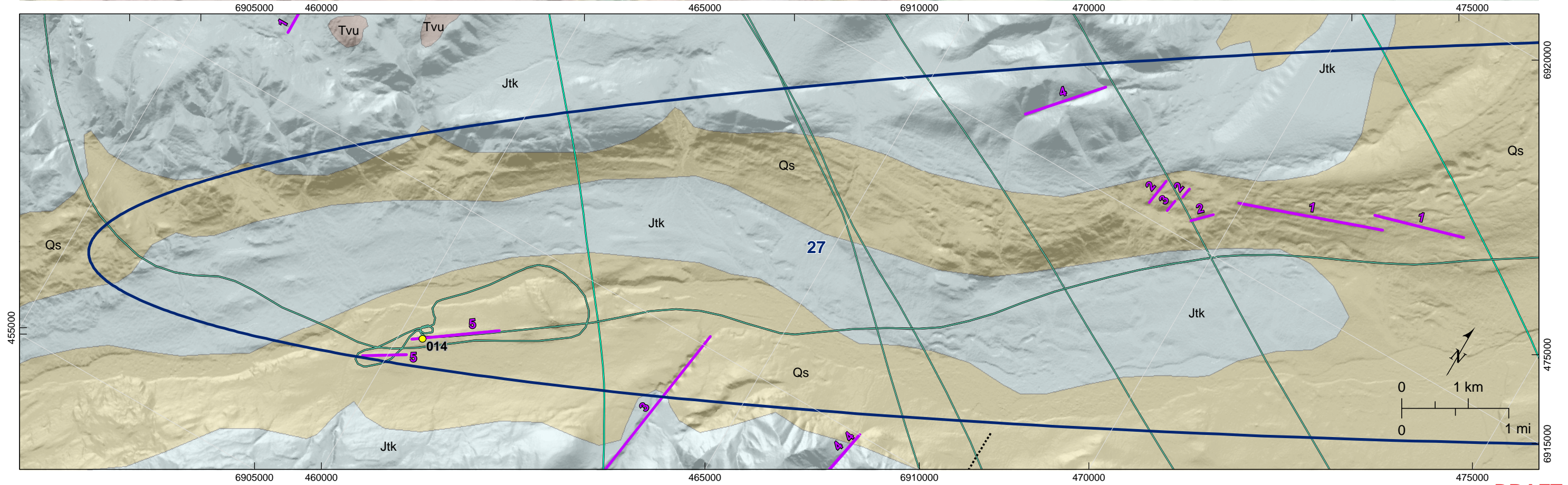
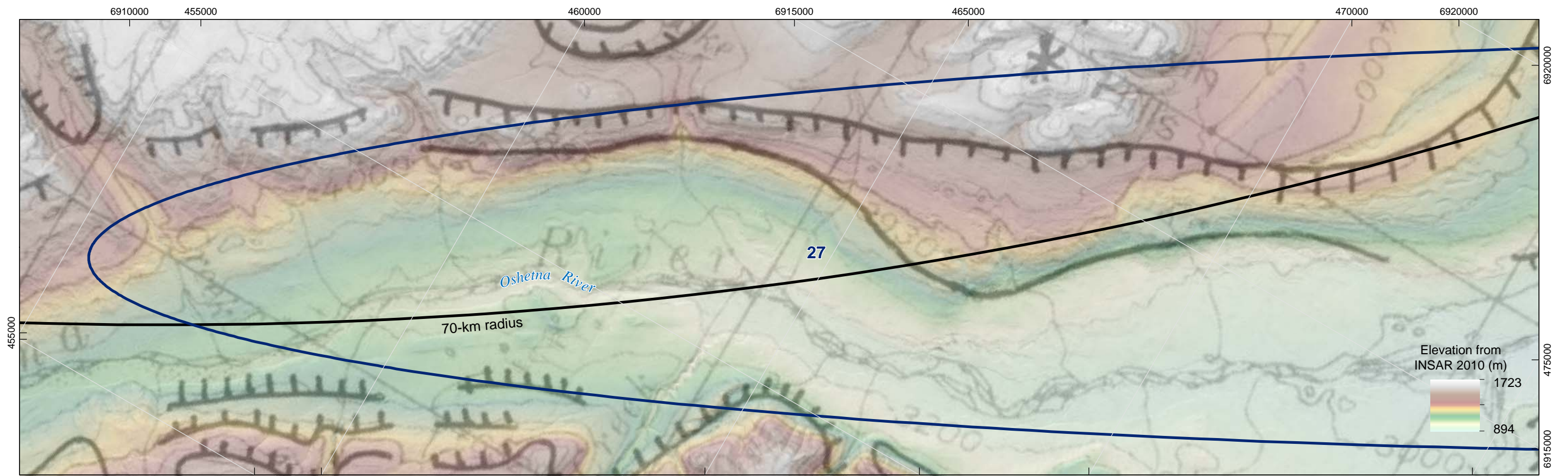
View looking northwest at layered bedrock (on left) with apparently undisrupted horizontally-bedded till (on right).



View looking southeast at exposure in left bank of unnamed drainage creek where till apparently overlies lake sediments and fluvial washout gravel. The lenticular beds in the fluvial gravel appear horizontal but are not laterally extensive.

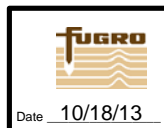


Close up view of exposure shown in Photograph (B). Note the apparently sub-horizontal basal contact between overlying till and underlying lacustrine deposits. Note sediments on the left of the image are influenced by landslide processes and not in-place locally.



Notes: 1. See Figures A0.2, A0.3, A0.4, and A0.5 for explanation.  
 2. Data frame has been rotated 30° east of north.  
 3. Geologic map by Williams and Galloway, 1986 (top) and by Wilson et al., 2009 (bottom).

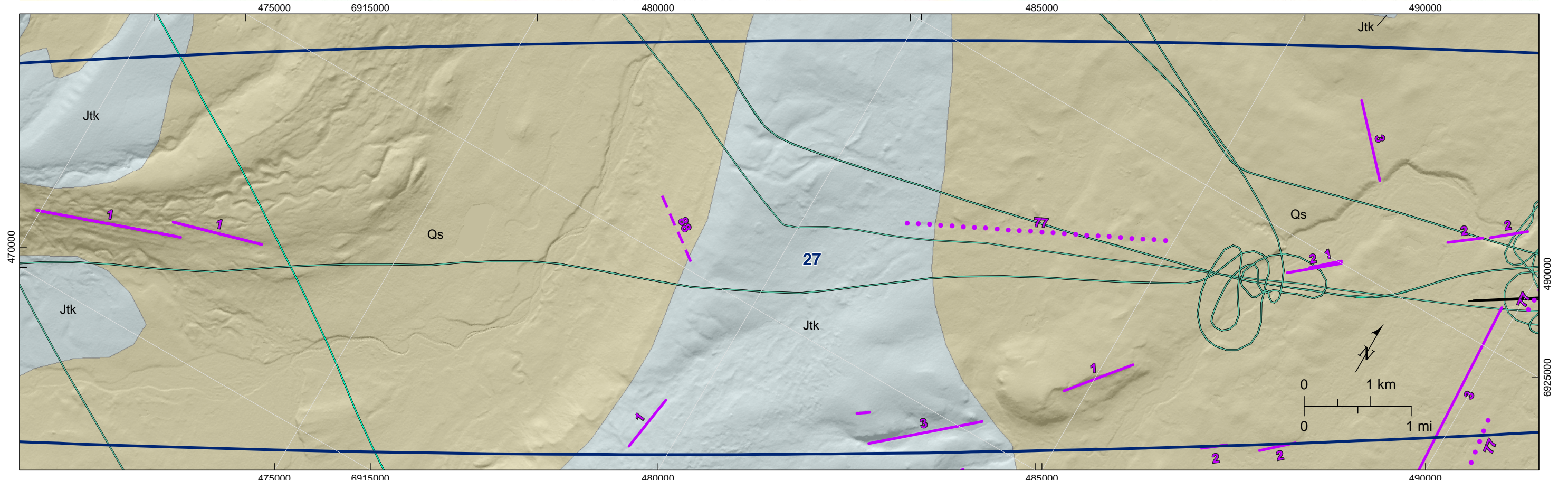
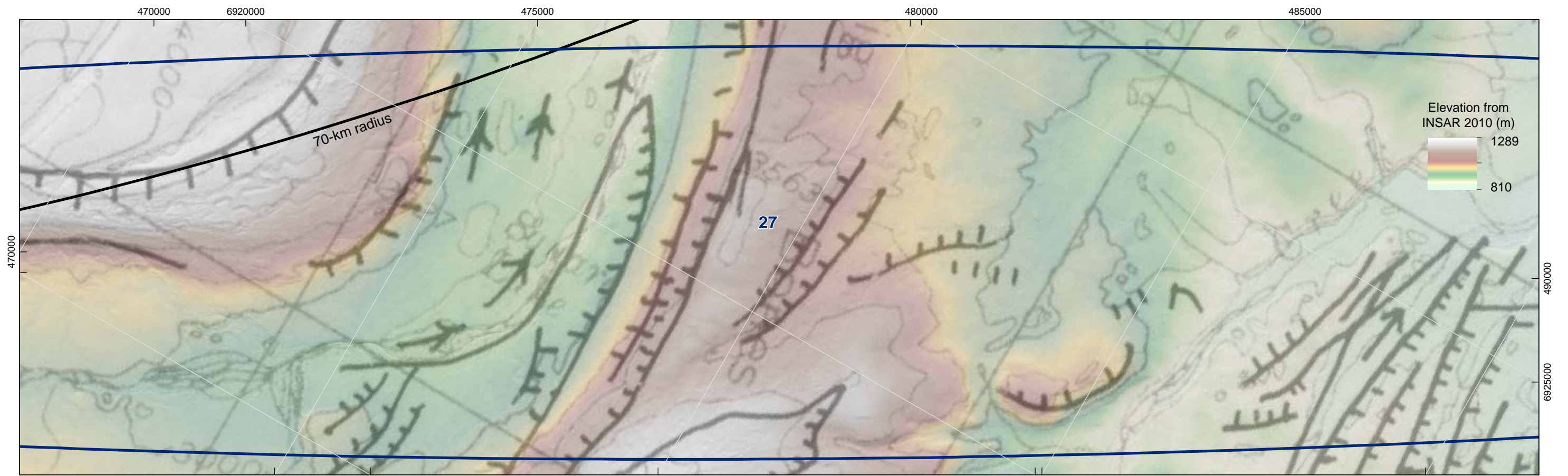
**DRAFT**



SUSITNA-WATANA HYDROELECTRIC PROJECT  
 LINEAMENT GROUP 27  
 MAP DATA

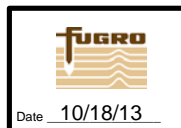
FIGURE  
 A27-1.1

79\_218900\_Alaska\_Railbelt/2189\_Lineament Report October 2013, modified 10/18/13



Notes: 1. See Figures A0.2, A0.3, A0.4, and A0.5 for explanation.  
 2. Data frame has been rotated 30° east of north.  
 3. Geologic map by Williams and Galloway, 1986 (top) and by Wilson et al., 2009 (bottom).

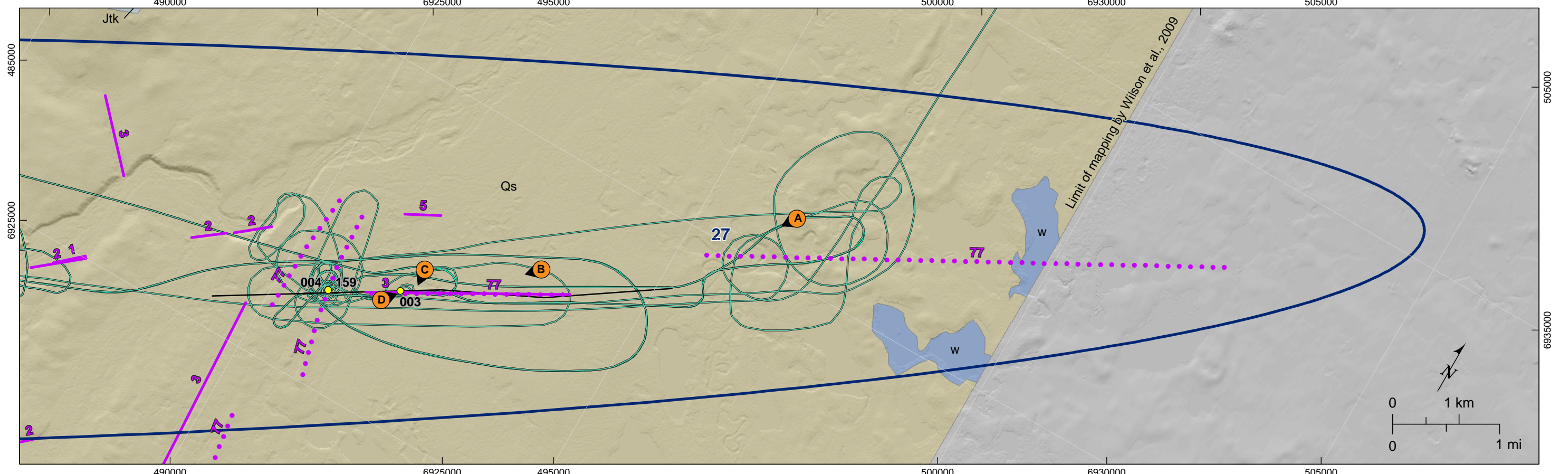
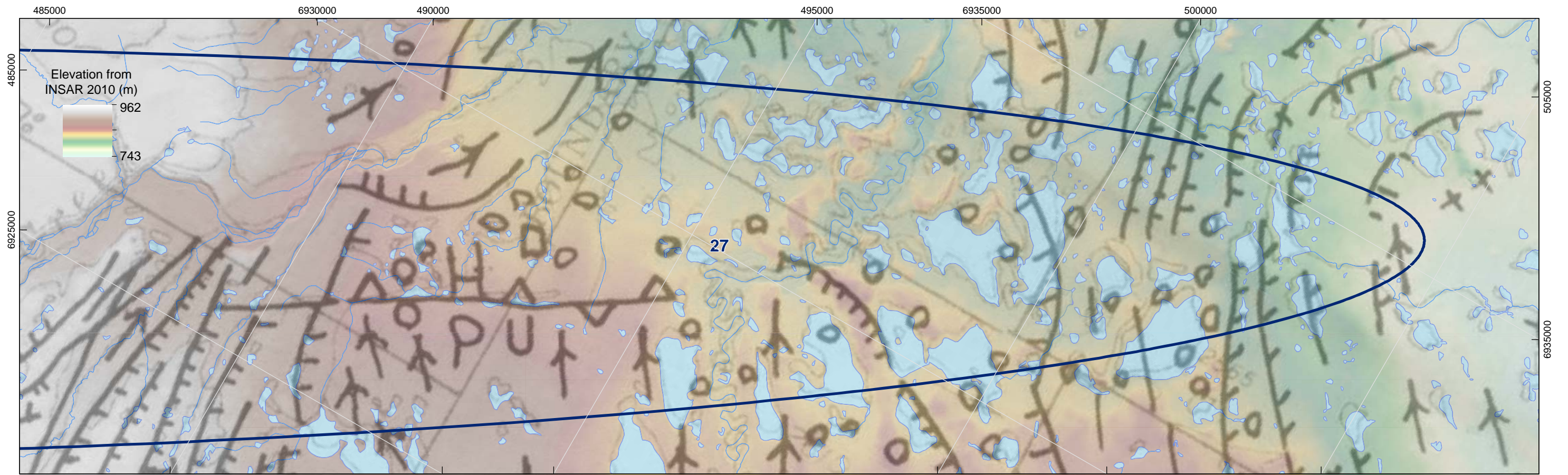
**DRAFT**



SUSITNA-WATANA HYDROELECTRIC PROJECT  
 LINEAMENT GROUP 27  
 MAP DATA

FIGURE  
 A27-2.1

79\_218900\_Alaska\_Railbelt/2189\_Lineament Report October 2013, modified 10.18.13



Notes: 1. See Figures A0.2, A0.3, A0.4, and A0.5 for explanation.  
 2. Data frame has been rotated 30° east of north.  
 3. Geologic map by Williams and Galloway, 1986 (top) and by Wilson et al., 2009 (bottom).

**DRAFT**



SUSITNA-WATANA HYDROELECTRIC PROJECT  
 LINEAMENT GROUP 27  
 MAP DATA

FIGURE  
 A27-3.1

79\_218900\_Alaska\_Railbel/2189\_Lineament Report October 2013, modified 10.18.13



View looking west-southwest toward linear alignment of lakes. Arrows point along lineament. Note kettle lake terrain in the foreground.



Close up view looking west-southwest along linear alignment of lakes in Photograph A. Arrows point along lineament.



View looking south across strong vegetation lineament associated with a ~2-meter-high linear ridge. Note that topographic expression of ridge abruptly dies out and does not continue to the west.



View looking northeast along south side of vegetation lineament and ~2-meter-high linear ridge shown in Photograph C. Positive feedback of vegetation growth and organic matter accumulation on the linear ridge may accentuate the apparent relief of the ridge.