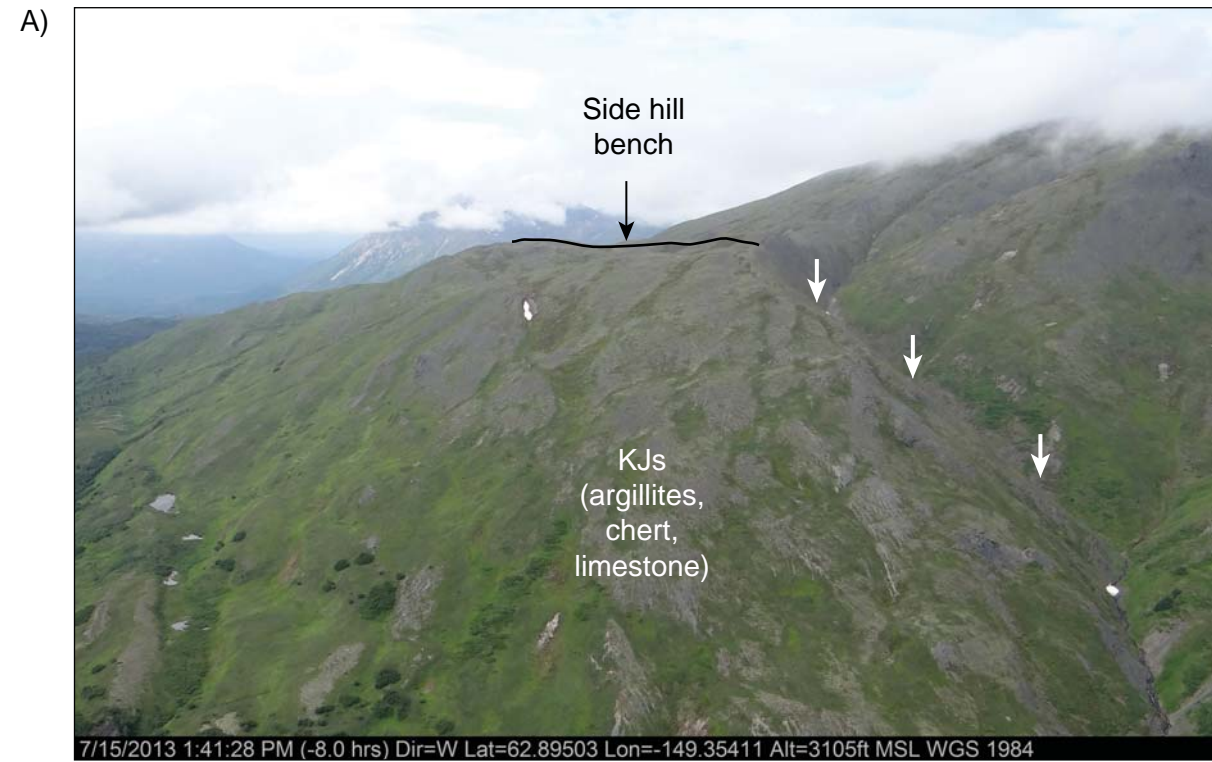


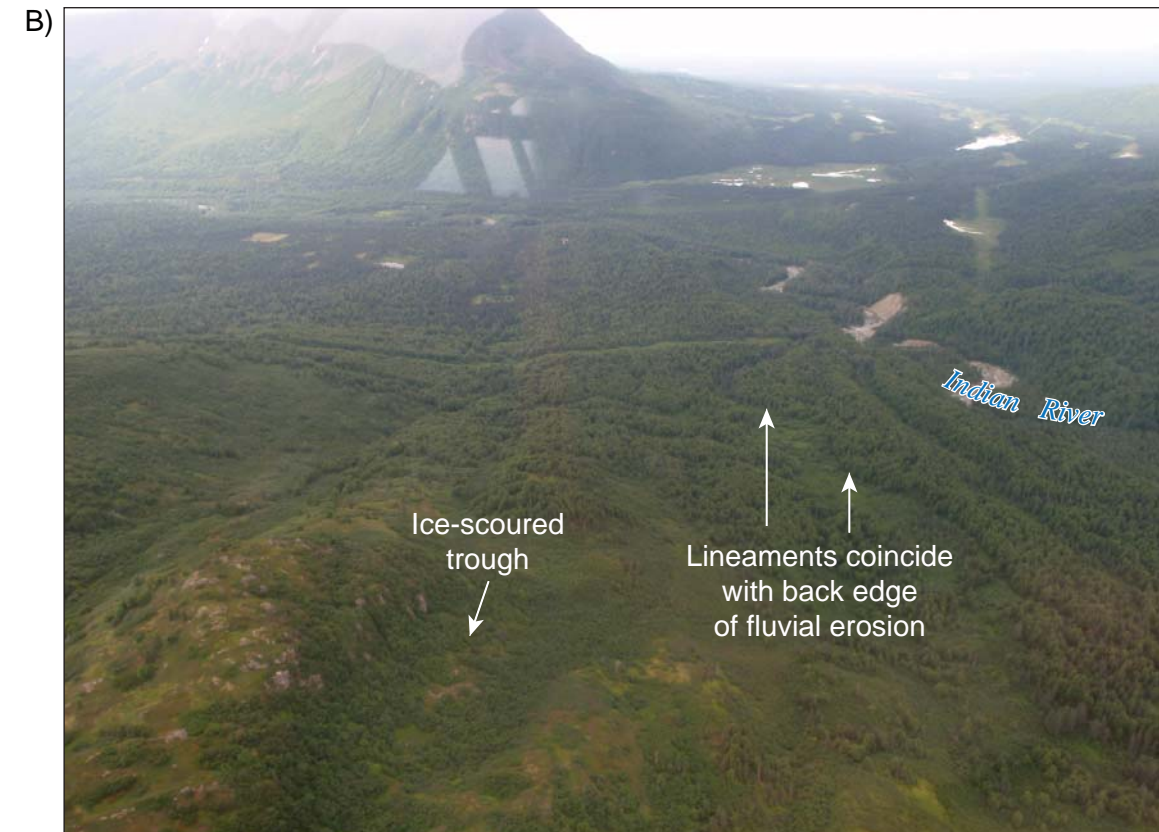
Notes: 1. See Figures A0.2, A0.3, A0.4, and A0.5 for explanation.
 2. Geology by Wilson et al., 2009.

DRAFT

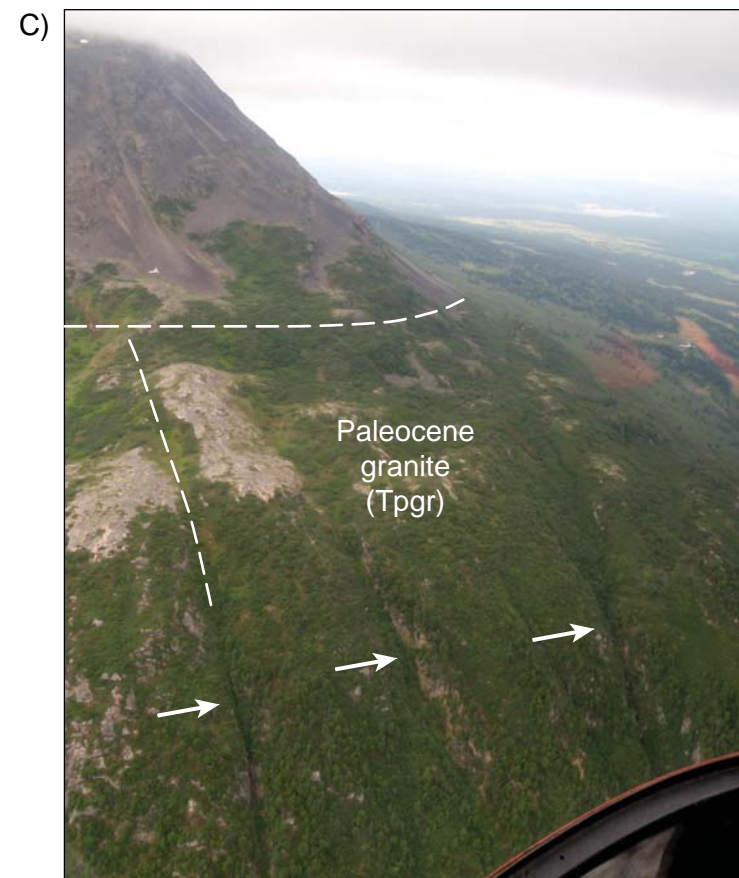
 Date 10/18/13	STATE OF ALASKA ALASKA ENERGY AUTHORITY 	SUSITNA-WATANA HYDROELECTRIC PROJECT LINEAMENT GROUP 5 MAP DATA	FIGURE A5-2.1
--	---	---	------------------



View looking west at eastern part of apparent side hill bench.



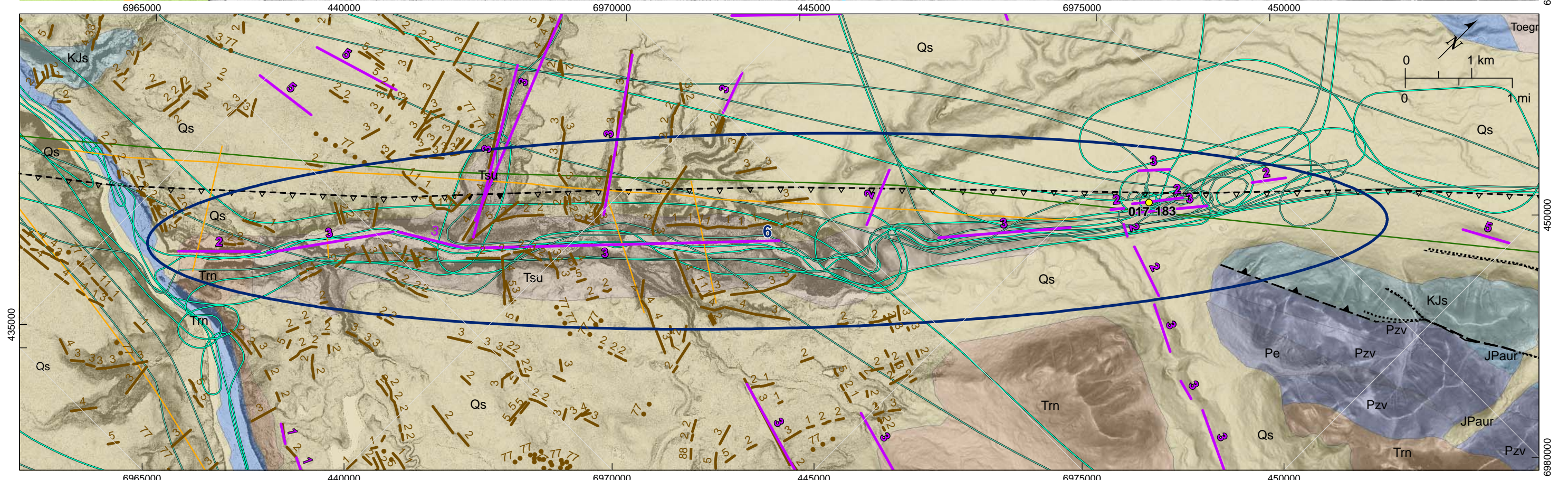
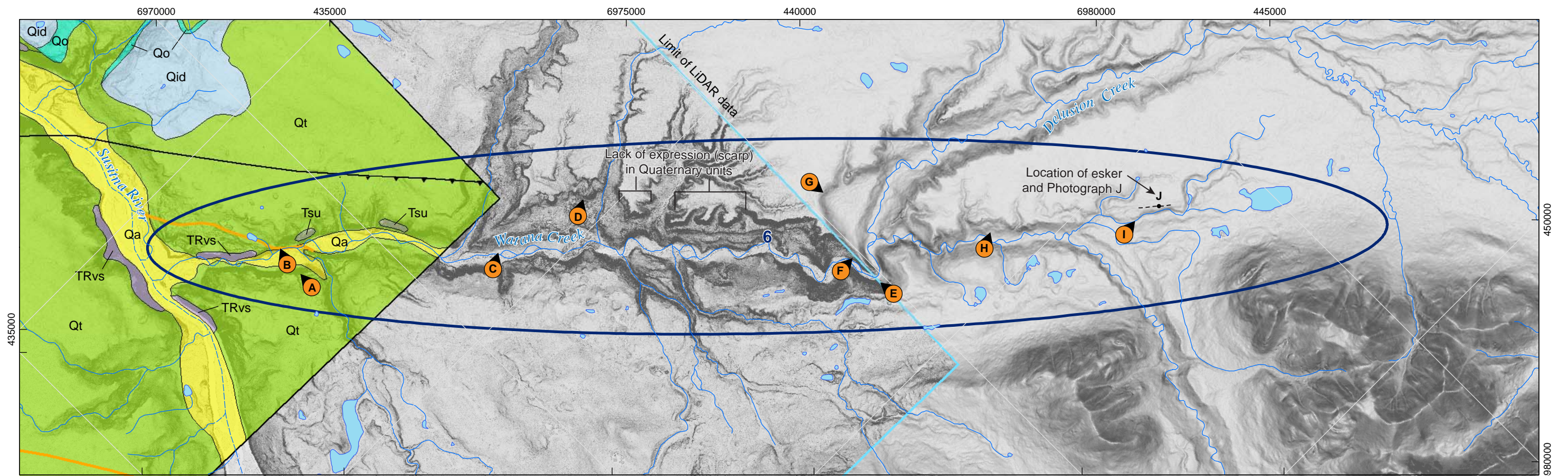
View looking west along ice-scoured terrain, with the Indian River flowing from right to left.



View of linear gullies developed on bedrock slope. Mapped lineament approximately shown.



View of drainage with mapped lineament approximately shown.



Notes: 1. See Figures A0.2, A0.3, A0.4, and A0.5 for explanation.
 2. Data frame has been rotated 45° east of north.
 3. Geology from Acres, 1982 (top) and by Wilson et al., 2009 (bottom)

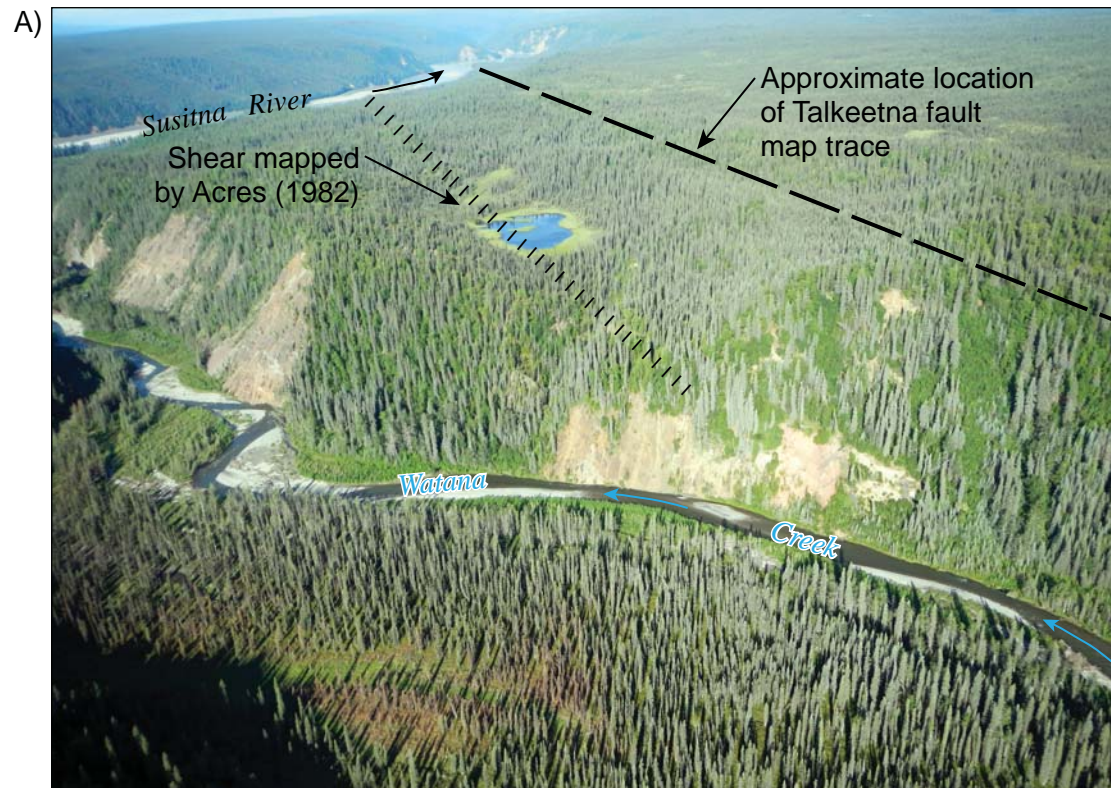
DRAFT



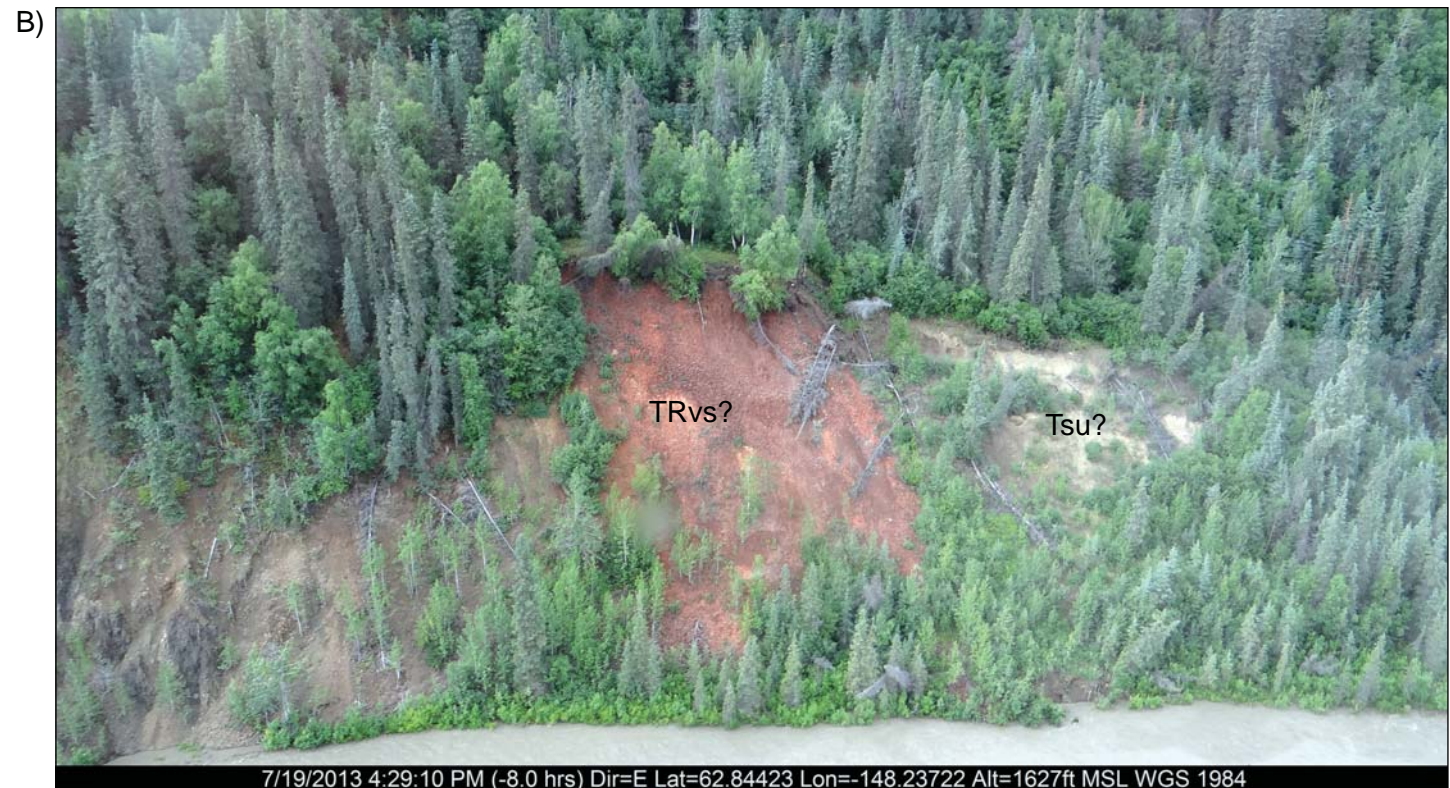
SUSITHA-WATANA HYDROELECTRIC PROJECT
 LINEAMENT GROUP 6
 MAP DATA

FIGURE
 A6.1

79_218900_Alaska_Railbelt189_Lineament Report October 2013, modified 10.18.13



View looking west along oblique to projection of Talkeetna fault



View looking east along lower river bank at apparent alternation zone distinguished by color contrast, possible juxtaposition of Triassic metabasalts and undifferentiated Tertiary sediments. This location is east of the mapped projections of the Talkeetna fault.



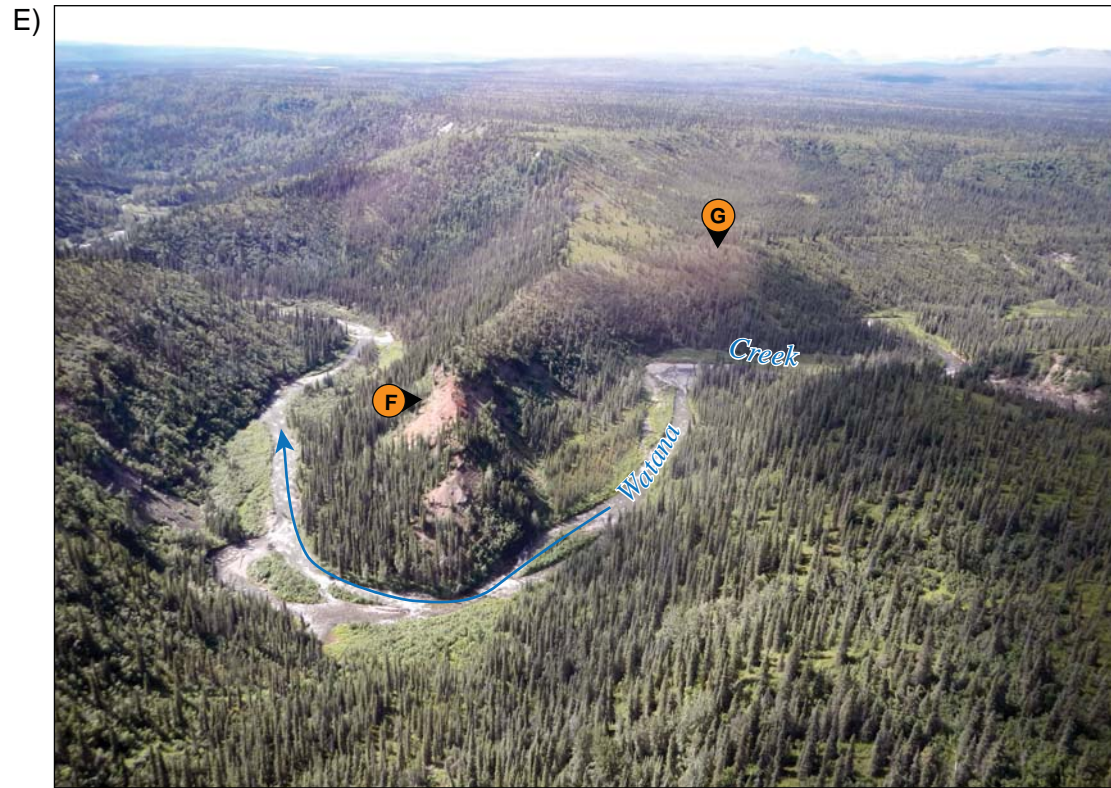
View looking east at apparent flat-lying contact between Quaternary lake sediments (above) and Quaternary till (below). Arrows point to contact.



View looking west at projected trace of Talkeetna fault whose ground expression is absent in Quaternary surface.

79_218900_Alaska_Railbelt/2189_Lineament Report October 2013, modified 10.18.13

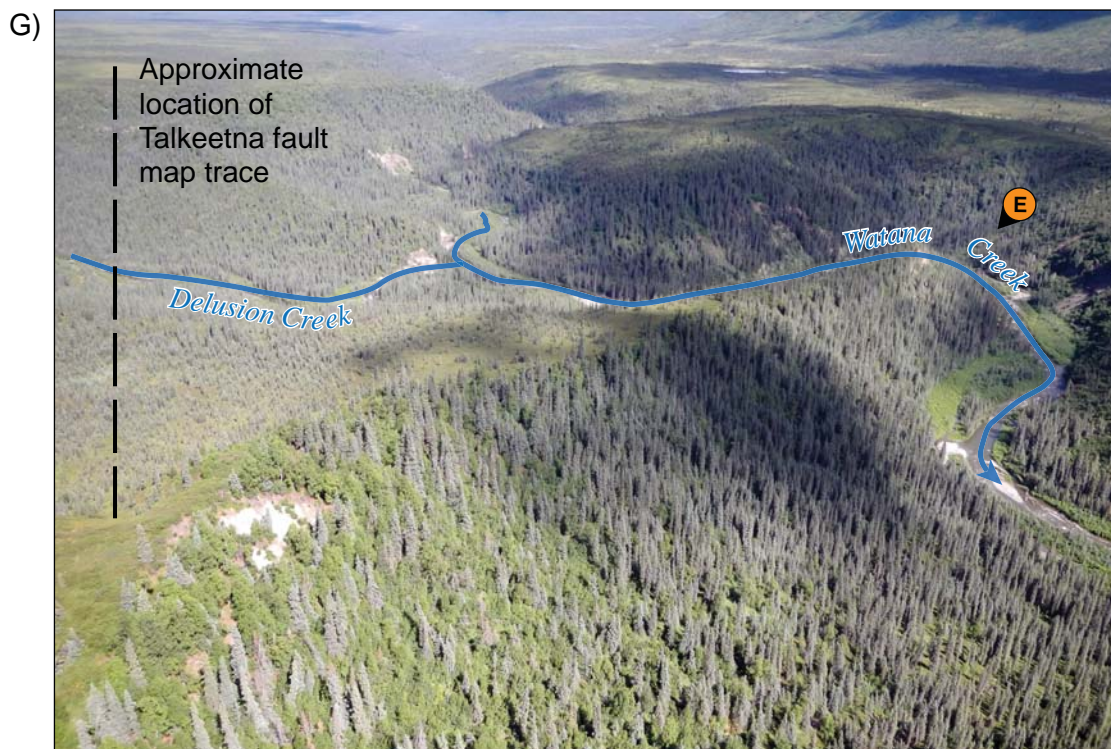
DRAFT



View looking south at erosion-resistant ridge of Tertiary sediments whose beds dip gently to the northwest but appear undisrupted.



View looking west at apparently northwest-dipping beds in Tertiary sediments, relatively consistent with northwest dips measured by WCC (1982) in Tertiary sediments along west bank Watana Creek.



View looking north-northeast past ridge, with flat and apparently undisturbed Quaternary sediments in the background.



View looking west at bedded (lake?) stratigraphy exposed in eroding bluff. Beds appear relatively horizontal, but may have a sense of non-planar geometry because of semi-circular outcrop. Note fallen trees that indicate erosion/slope movement.

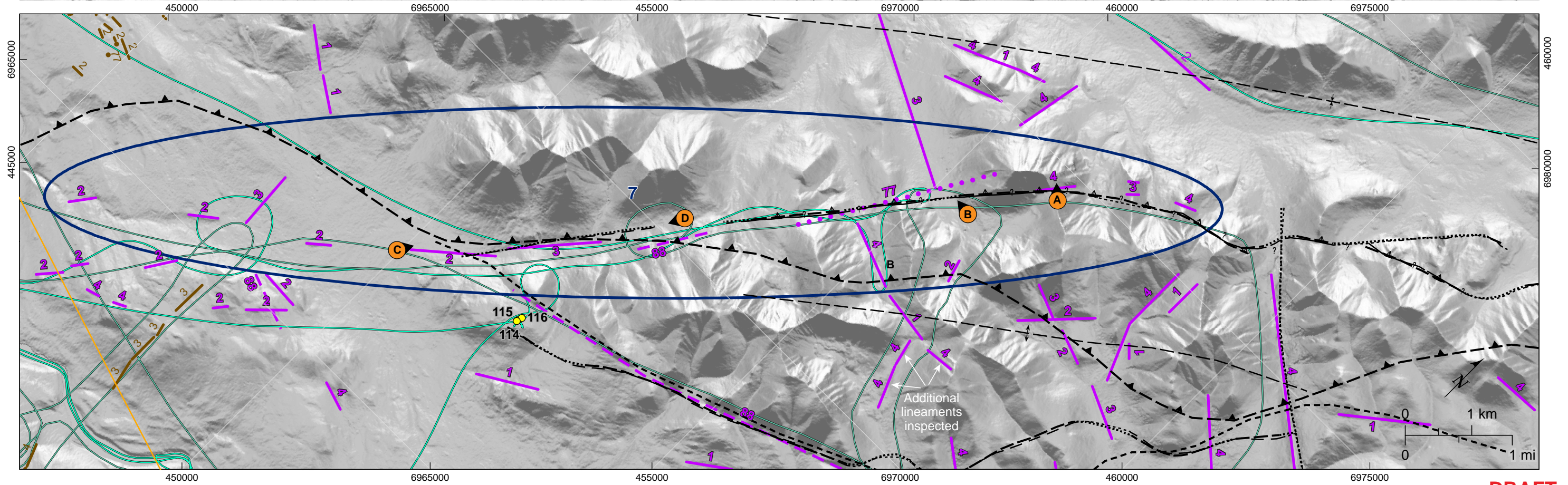
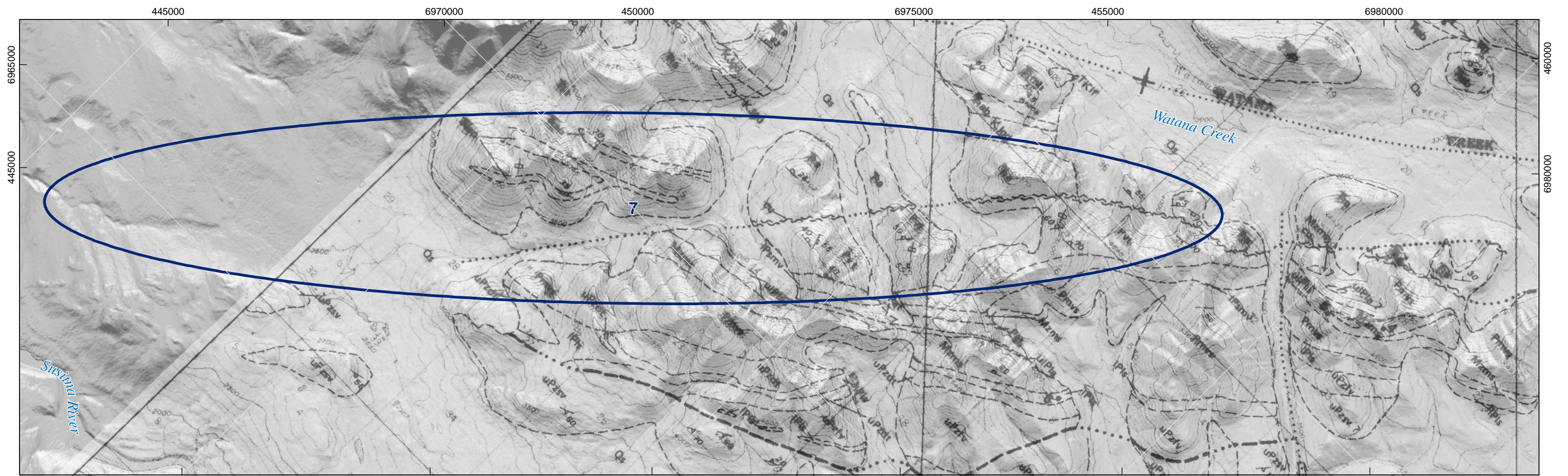


View looking north at linear esker nearly coincident with map projection of Talkeetna fault.



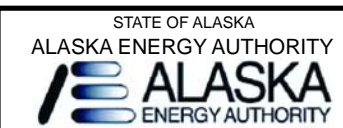
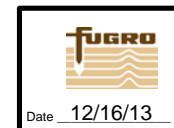
View looking at shallow soil pit dug in esker crest. Upper black, gray, and reddish soil layers are Holocene tephras. Scale is in centimeters; the upper 45 centimeters of the pit are in view.

DRAFT



- Notes: 1. See Figures A0.2, A0.3, A0.4, and A0.5 for explanation.
 2. Data frame has been rotated 45° east of north.
 3. Geologic map by Kline et al., 1990.

DRAFT

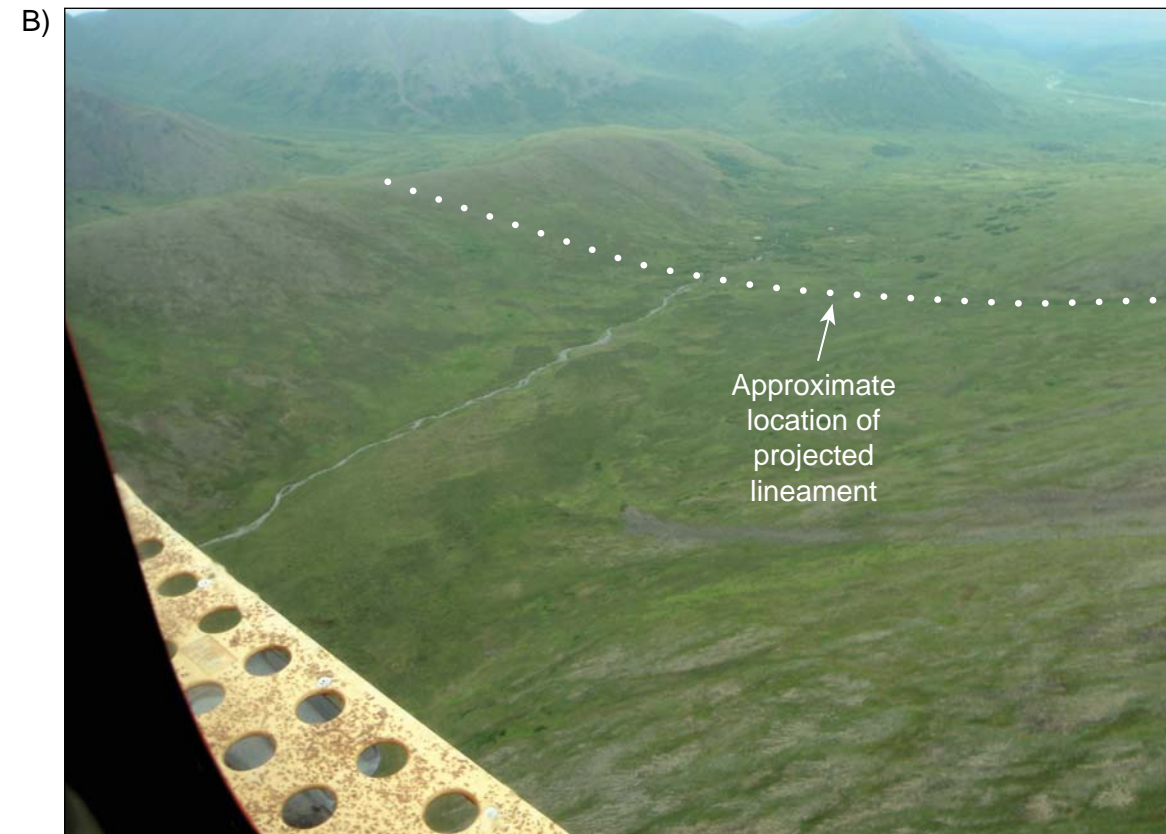


SUSITNA-WATANA HYDROELECTRIC PROJECT
 LINEAMENT GROUP 7
 MAP DATA

FIGURE
 A7.1



View looking at color contrast at previously mapped bedrock fault.



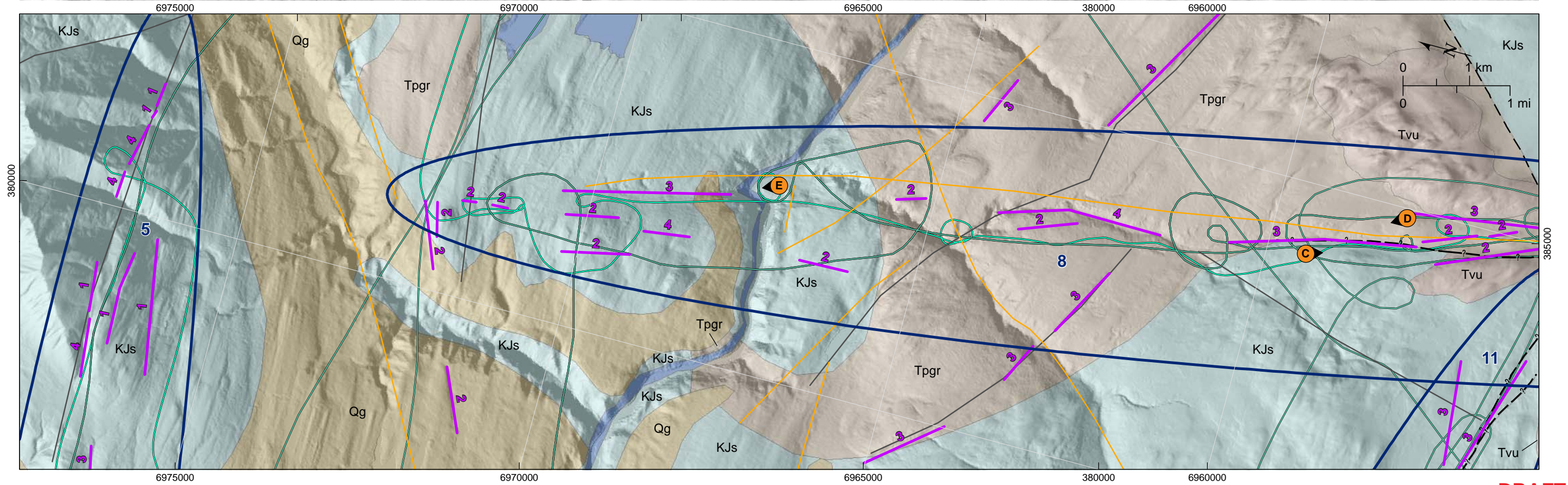
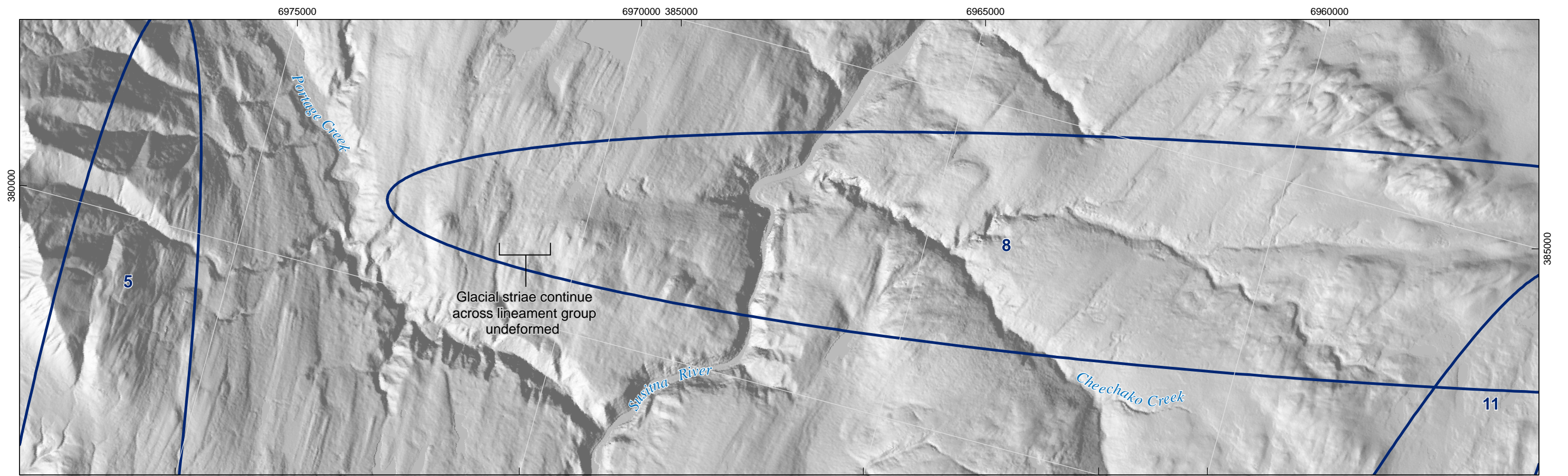
View looking west down-valley at apparent undeformed glacial sediments.



View looking up-valley at incised drainage that coincides with mapped lineament and previously mapped fault.

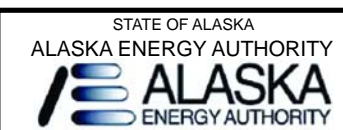
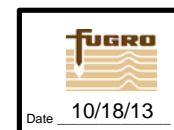


View looking down-valley from the top of the drainage seen in Photograph C.



Notes: 1. See Figures A0.2, A0.3, A0.4, and A0.5 for explanation.
 2. Data frame has been rotated 75° west of north.
 3. Geology by Wilson et al., 2009.

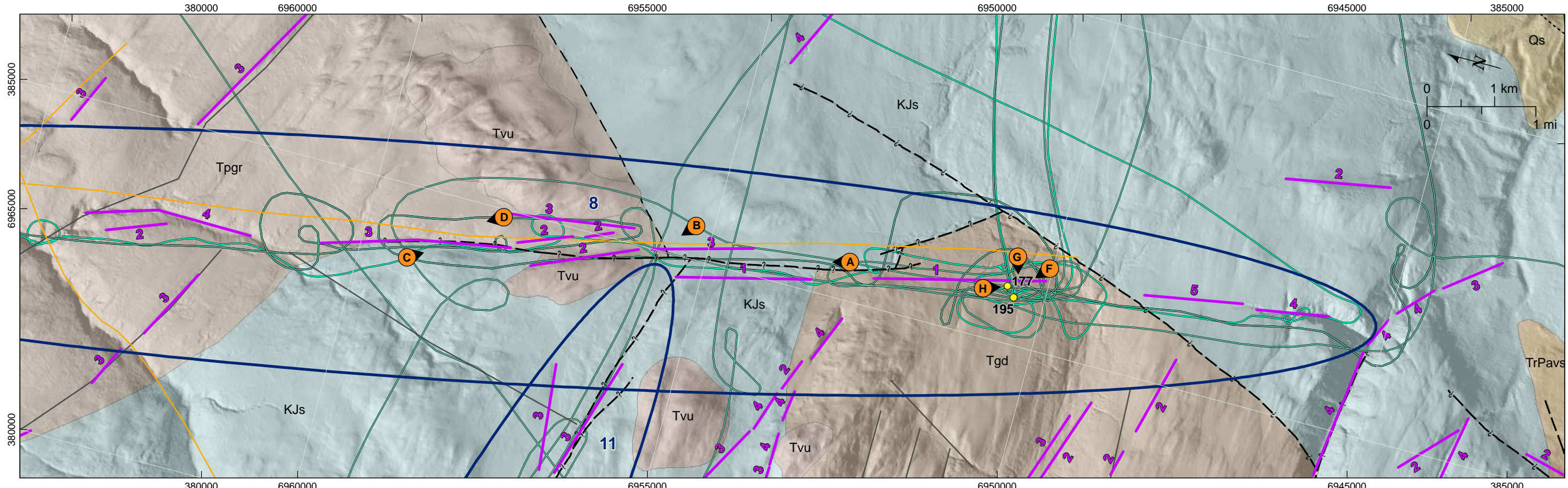
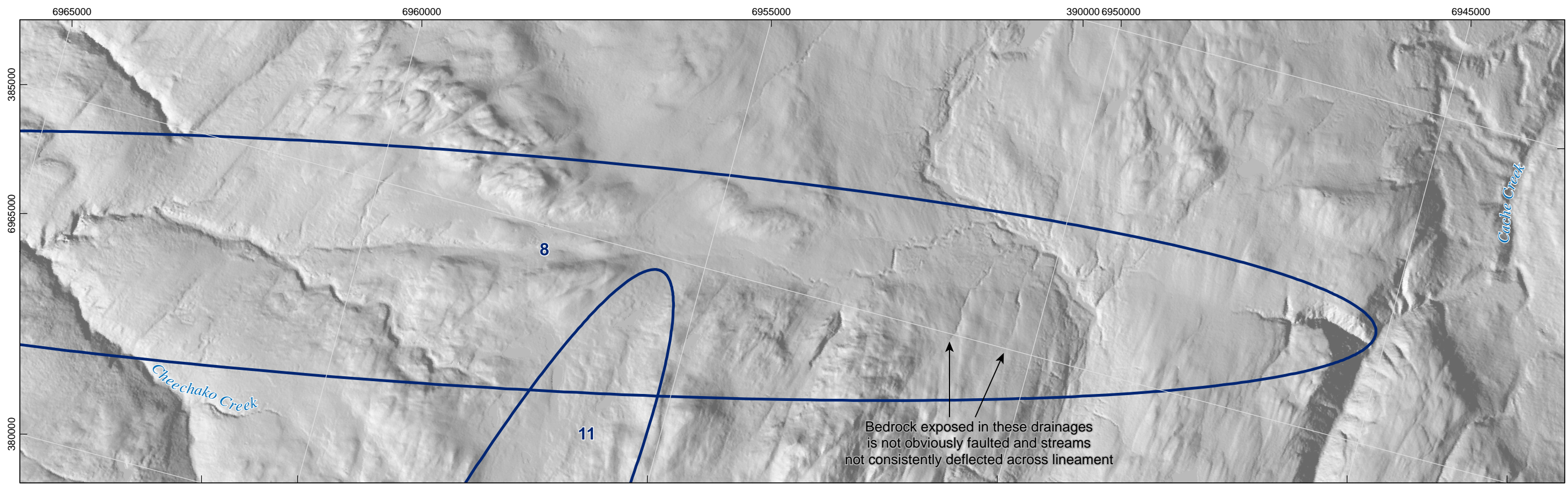
DRAFT



SUSITNA-WATANA HYDROELECTRIC PROJECT
 LINEAMENT GROUP 8
 MAP DATA



FIGURE
 A8-1.1

79_218900_Alaska_Railbelt/2189_Lineament Report October 2013, modified 10/18/13



Notes: 1. See Figures A0.2, A0.3, A0.4, and A0.5 for explanation.
 2. Data frame has been rotated 75° west of north.
 3. Geology by Wilson et al., 2009.

DRAFT

 Date 10/18/13	STATE OF ALASKA ALASKA ENERGY AUTHORITY 	SUSITNA-WATANA HYDROELECTRIC PROJECT LINEAMENT GROUP 8 MAP DATA	FIGURE A8-2.1
--	---	---	------------------

79_218900_Alaska_Railbelt2189_Lineament Report October 2013, modified 10.18.13