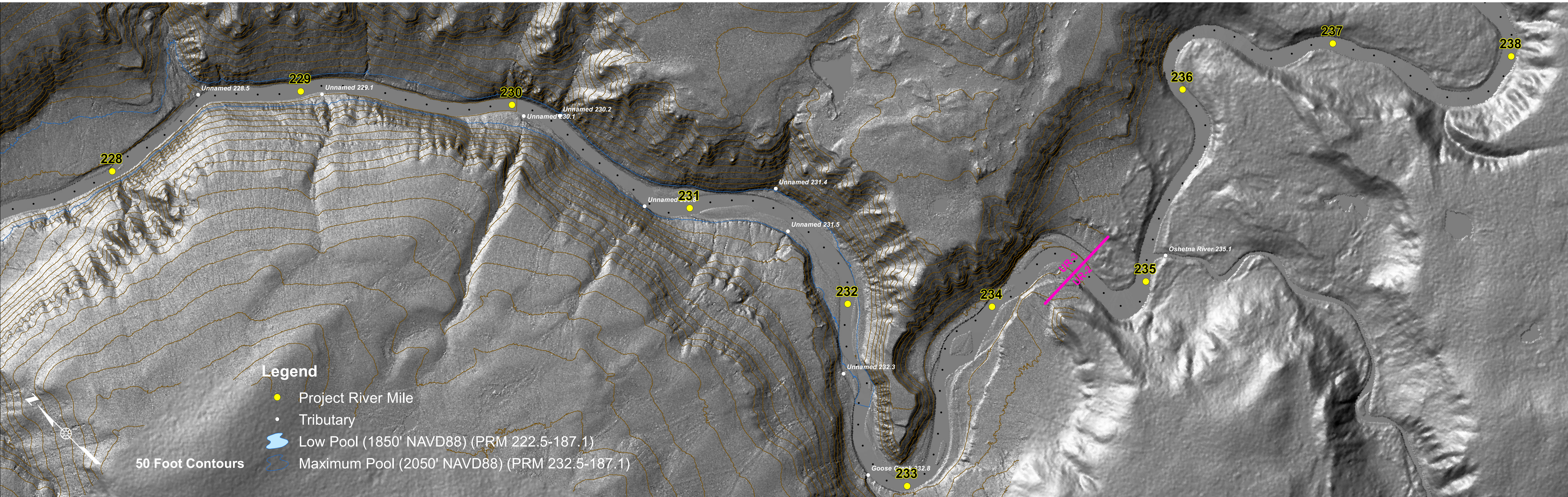
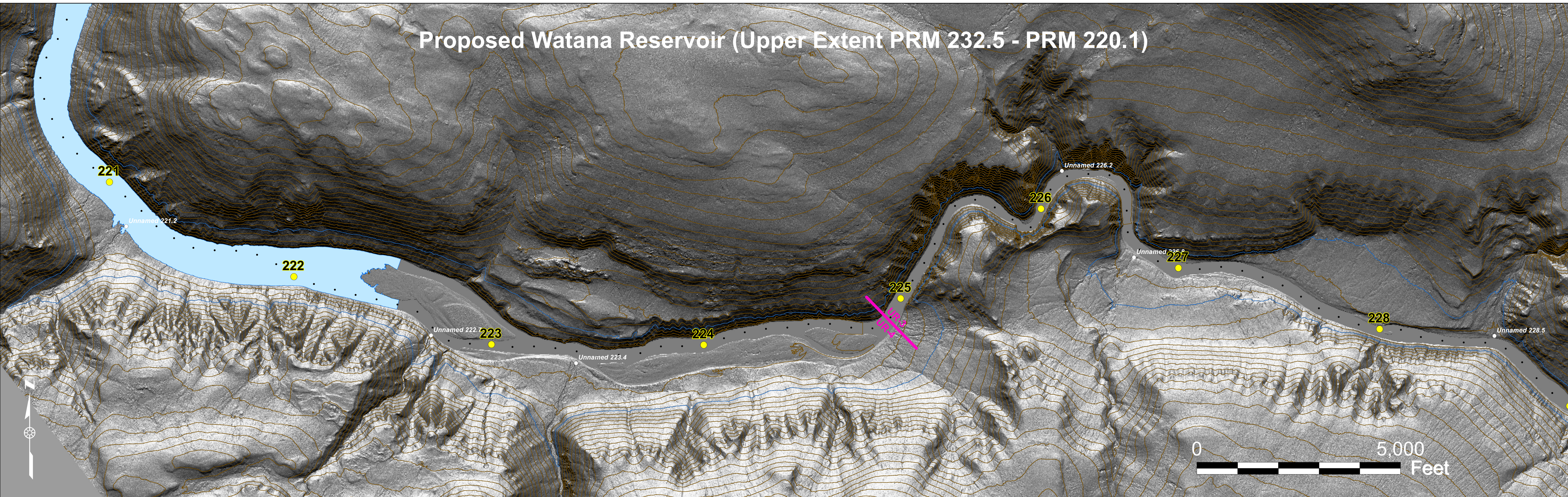


HANDOUT: UPPER RESERVOIR TRIBUTARY MAPPING EXAMPLES  
SEPTEMBER 9-11, 2014

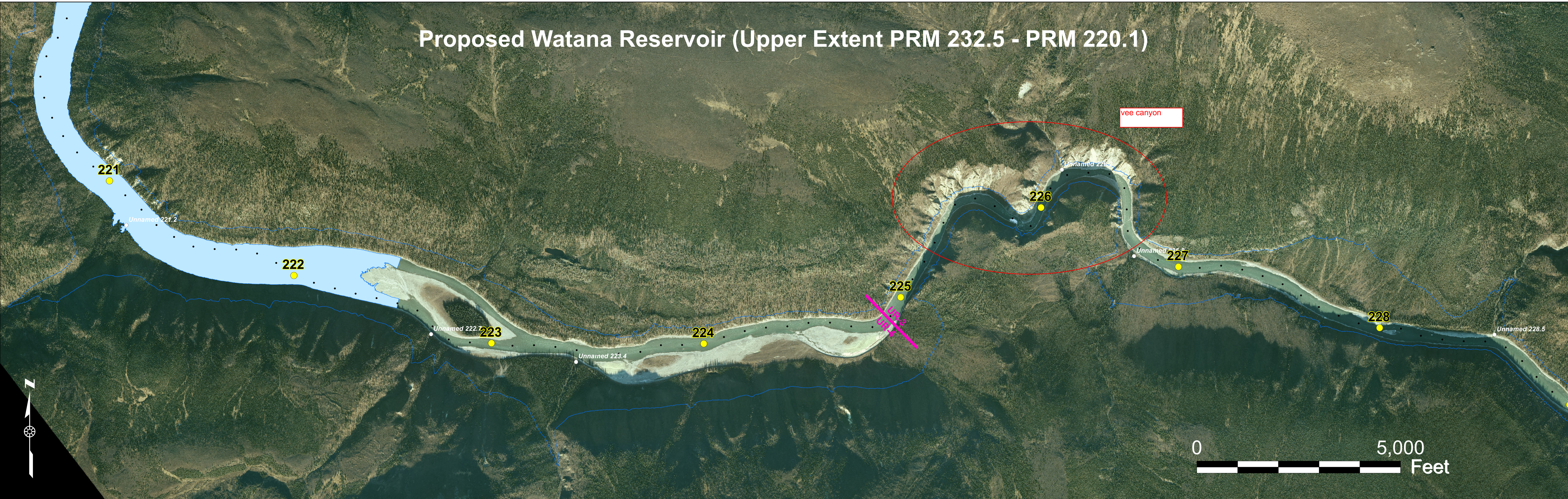
The following maps were distributed at the Fish Passage Brainstorm Workshop #2 as examples of available information to assist with the fish passage study:

- 1 Upper Reservoir Topo Data Example Map
- 2 Upper Reservoir Ortho Photo Example Map, with Meeting Notes
- 3 Kosina Creek Plan-Profile Example Map

# Proposed Watana Reservoir (Upper Extent PRM 232.5 - PRM 220.1)

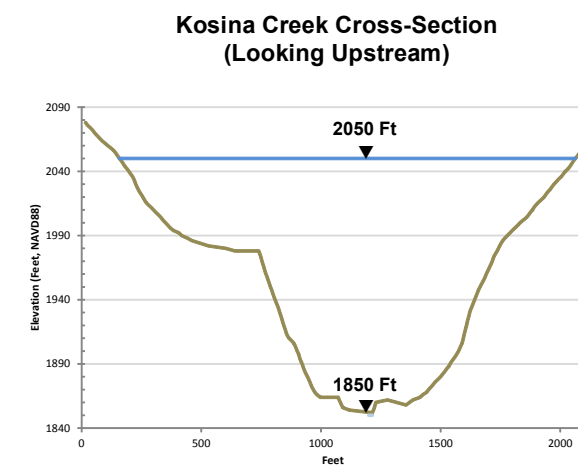
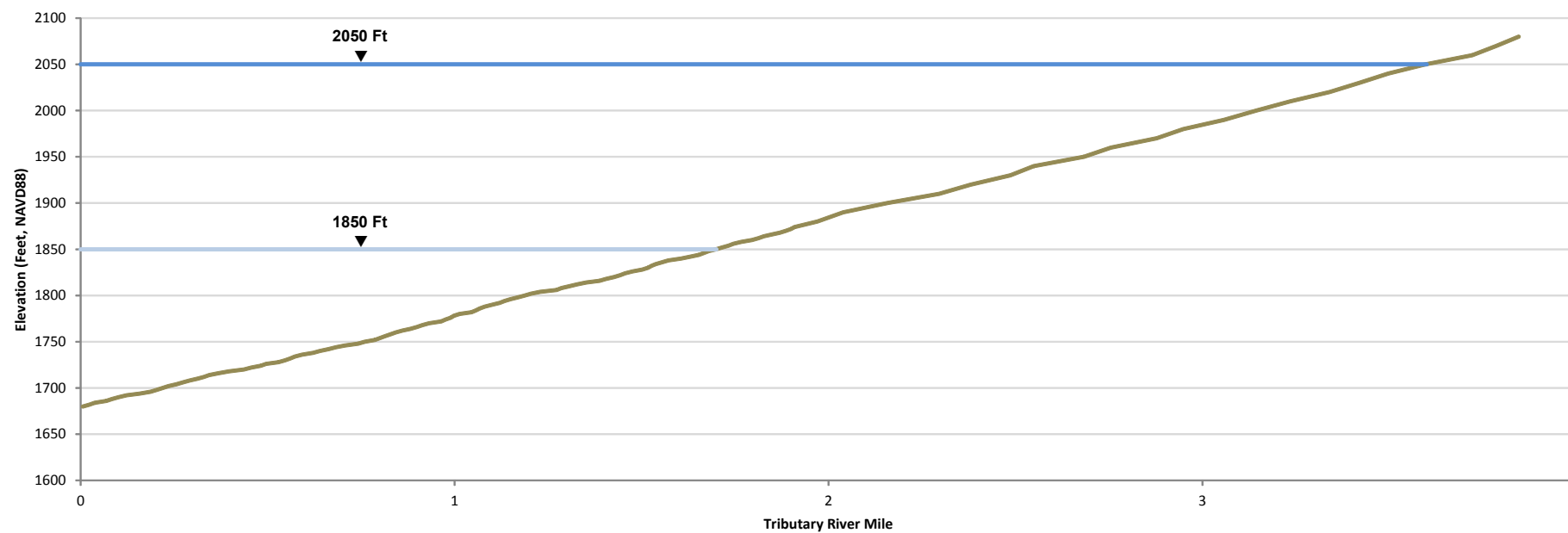
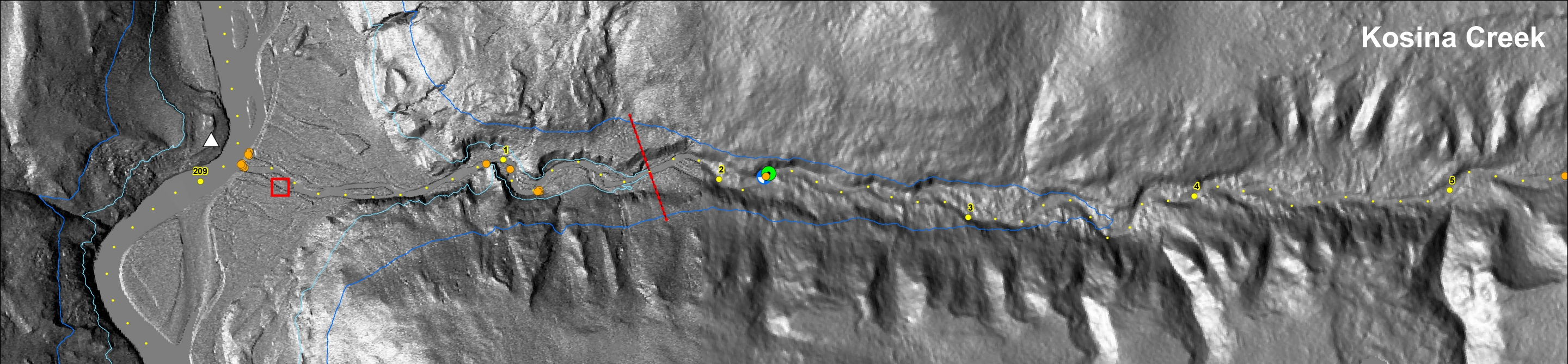


# Proposed Watana Reservoir (Upper Extent PRM 232.5 - PRM 220.1)



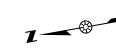
- Legend**
- Project River Mile
  - Tributary
  - Low Pool (1850' NAVD88) (PRM 222.5-187.1)
  - Maximum Pool (2050' NAVD88) (PRM 232.5-187.1)

# Kosina Creek



## Legend

- Project River Mile (Small Yellow Dots = PRM Tenths)
- ⋈ Reservoir Maximum Water Level (2050 Ft NAVD88)
- ⋈ Reservoir Minimum Water Level (1850 Ft NAVD88)
- PIT Tag Array (2013)
- ⊙ Rotary Screw Trap (2013)
- △ Fixed Radio Telemetry Site (2013)
- ⋯ Kosina Creek Cross-Section
- ⊕ AEA Tributary Gaging Station
- Fish Distribution and Abundance Sample Site (2013)



Projection: AK SP Zone 4 NAD 1983  
 Date Created: 9/8/2014  
 Map Author: R2 - Joetta Zabolney  
 File: Map\_TWIG\_FishPass\_PlanProfile.mxd

