

# Initial Study Report Meeting

## ***Study 13.6 Paleontological Resources***

*October 22, 2014*

Prepared by

Pacific Rim Geological Consulting, Inc.  
Northern Land Use Research Alaska LLC

Charles M. Mobley & Associates

URS, Inc.



## *Study 13.6 Objectives*

- The objective of this study is to determine the effects of the proposed Project on paleontological resources by locating, documenting, and evaluating paleontological resources within the study area.

## *Study 13.6 Components*

- Identification of Potential Impacts to Paleontological Resources (ISR Part A, Section 4.1; pg 2).
- Determination of Field Survey and Monitoring Needs (ISR Part A, Section 4.2; pg 2).
- Field Survey (ISR Part A, Section 4.3; pg 2).

## *Study 13.6 Variances*

- The impact analysis of the geologic units that may be impacted by the proposed Project and assertion of their associated Potential Fossil Yield Classification (PFYC) was deferred until 2015.
- Determination of field surveys and monitoring needs was deferred until 2015.

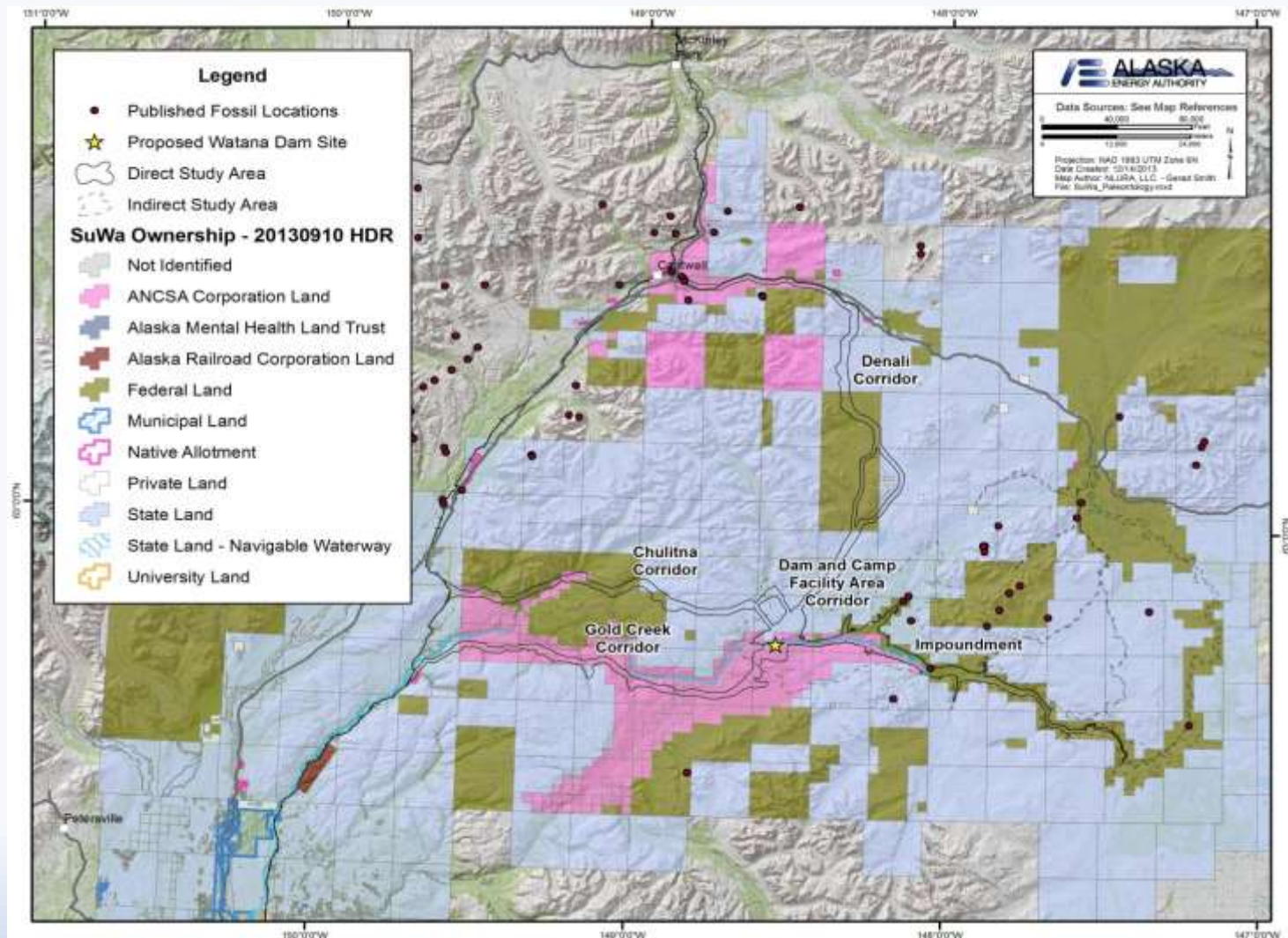
## *Study 13.6 Summary of Results in ISR (ISR Study 13.6, Part A – Section 5)*

- The potential fossil-bearing rock units identified in the literature review included:
  - The Wrangellia Terrane
  - Kahiltna Flysch
  - Windy Terrane
  - Susitna Terrane
  - Chulitna Group of Terranes
  - Quaternary Cover Sequences
- Spreadsheet prepared summarizing information from approximately 100 fossil locations in these potential fossil-bearing rock units.
- Most fossil locales occur in two distinct, northeast-striking belts on the east-central and western portions of the study area, with a scattering of fossils in other locales.
- Three fossil localities occur within the area that could be within the inundation zone.
- Twelve other fossil localities occur within the transportation corridors.

## *Study 13.6 Summary of Results in ISR (ISR Study 13.6, Part A – Section 5)*

- Analysis of the existing paleontological site inventory as derived from the literature search indicates that none of the known fossil finds in the study area are of critical scientific importance.
- Archaeological crews performing fieldwork in 2013 reported four fossil plant finds in the study area.
- The sites were assigned Alaska Heritage Resources Survey (AHRS) numbers and added to the paleontological site inventory.

# Study 13.6 Summary of Results in ISR (ISR Study 13.6, Part A – Section 5)



## *Study 13.6 Summary of Results since ISR*

- No additional work was performed in 2014. Paleontology work will resume in 2015.



## *AEA Proposed Modifications to Study 13.6 in ISR (ISR Study 13.6, Part C – Section 7.1.2)*

- In the ISR, AEA proposes no modifications to the methods in the FERC-approved study plan.
- The study area has changed to include the Denali East Option road and transmission line corridor.

## *New Modifications to Study 13.5 since ISR*

The Chulitna Corridor was dropped from the study area in 2014.

## ***Current Status and Steps to Complete Study 13.6 ISR Study 13.6, Part C – Section 7.1***

To complete the study, AEA will implement the methods in the Study Plan, as follows:

- ***Identify potential impacts to paleontological resources:***  
The study team will determine the geologic units that may be impacted by the proposed Project and the associated PFYC classes. Based on this information, AEA will evaluate the risk of impacting significant paleontological resources.
  - Literature review is complete.
  - In 2015, AEA will complete impact analysis and ascertain PFYC for geologic units that may be impacted.

## ***Current Status and Steps to Complete Study 13.6 ISR Study 13.6, Part C – Section 7.1***

To complete the study, AEA will implement the methods in the Study Plan, as follows:

- ***Determine the need for field survey and monitoring efforts:***

The need for field survey and monitoring efforts will vary by location and will be determined largely upon the basis of the PFYC classifications for the particular location.

- Development of field program is in progress.

## ***Current Status and Steps to Complete Study 13.6 ISR Study 13.6, Part C – Section 7.1***

To complete the study, AEA will implement the methods in the Study Plan, as follows:

- ***Field Surveys:***

Field surveys will generally be undertaken for PFYC Class 4 and 5 units, especially exposed bedrock areas (Class 4a and 5a). Class 3 units may or may not require a survey.

- Fieldwork is planned for summer 2015.
- Field surveys will focus on areas with fossil potential that may be impacted by the Project (e.g., inundated areas, dam site, borrow sites).
- Fossil specimens will be sent to laboratories for identification in fall 2015.

## *Licensing Participants Proposed Modifications to Study 13.6?*

- Agencies
- CIRWG members and Ahtna
- Public