

Initial Study Report Meeting

Study 10.9 Wolverine Distribution, Abundance, and Habitat Occupancy

October 21, 2014

Prepared by

Alaska Department of Fish & Game



Study 10.9 Objectives

- **Estimate the current population size of wolverines.**
- **Establish a population index for wolverines.**
- **Describe the distribution of wolverines in late winter.**
- **Describe habitat use by wolverines in late winter.**

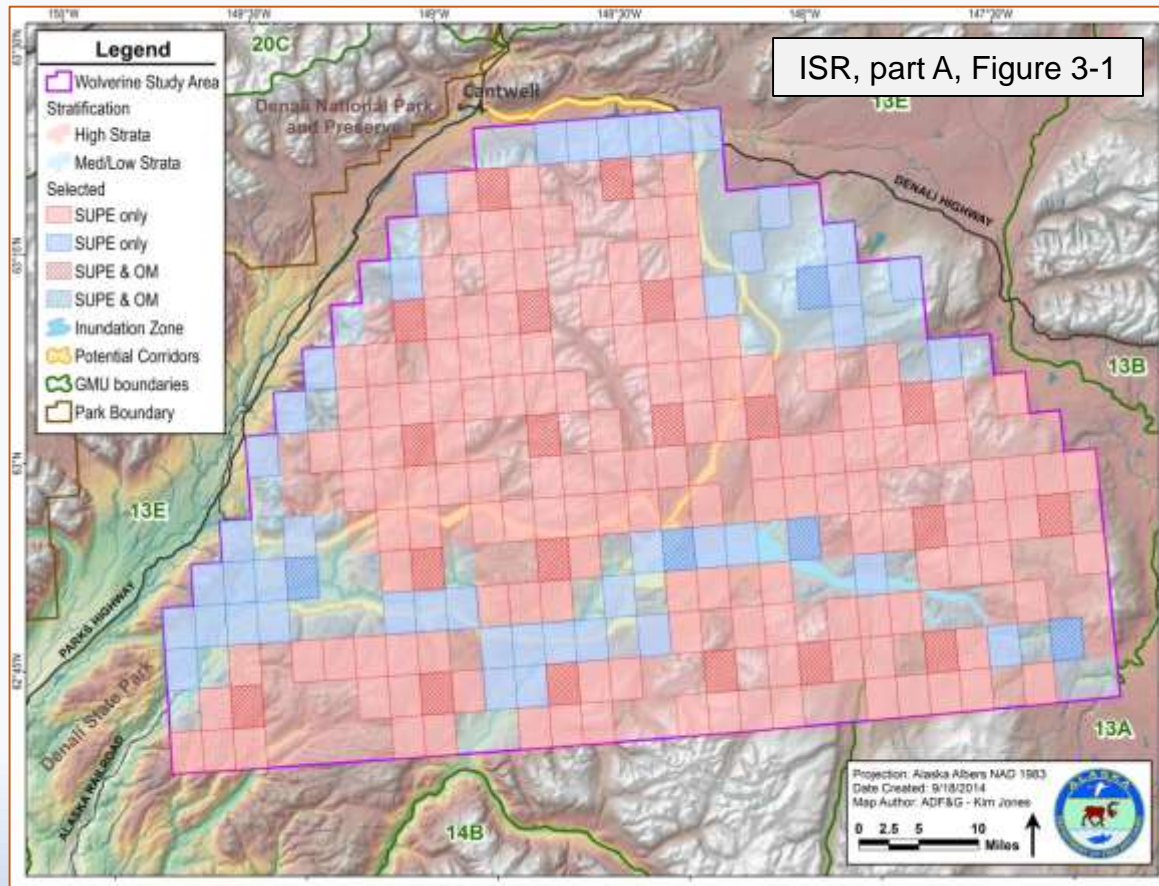
Study 10.9 Components

- **Sample-Unit Probability Estimator (SUPE) and Occupancy Surveys** (ISR Part A, Section 4.1, pp 2–3)
- **Occupancy Modeling** (ISR Part A, Section 4.2, pg 3)



Study 10.9 Summary of Results in ISR (ISR Part A – Section 5)

- Conducted 2 occupancy surveys in 2013 (ISR Part A, Section 5, pg 4).
- Detected wolverines or tracks in 23 of 25 sample units.



AEA Proposed Modifications to Study 10.9 in ISR (ISR Part C – Section 7.1.2)

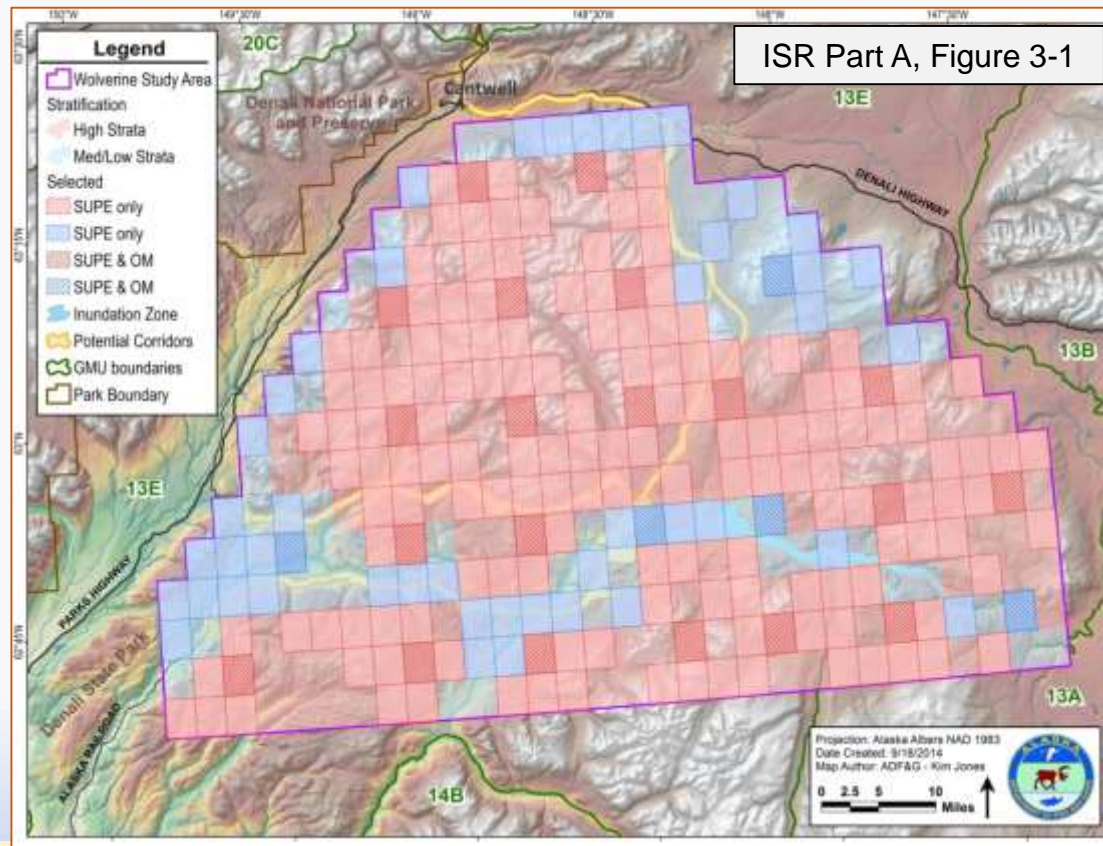
Because snow conditions in 2014 did not allow for SUPE or occupancy surveys:

- Will attempt a SUPE survey in winter 2015.
- If snow conditions are not suitable for a SUPE survey in 2015, then will conduct an occupancy survey.



Steps to Complete Study 10.9 (ISR Part C – Section 7.1)

- Will attempt a SUPE survey in winter 2015 (RSP Section 10.9.4).
- If snow conditions are not suitable for a SUPE survey, then will complete an occupancy survey in 2015.



Licensing Participants' Proposed Modifications to Study 10.9?

- Agencies
- CIRWG members and Ahtna
- Public

