

APPENDIX R. 2013 GEOMORPHIC FEATURES IN THE THREE RIVER CONFLUENCE

**Susitna-Watana Hydroelectric Project
(FERC No. 14241)**

Geomorphology Study (6.5)

**Mapping of Geomorphic Features and Turnover
within the Middle and Lower Susitna River Segments
from 1950s, 1980s, and Current Aerials
Technical Memorandum**

Prepared for

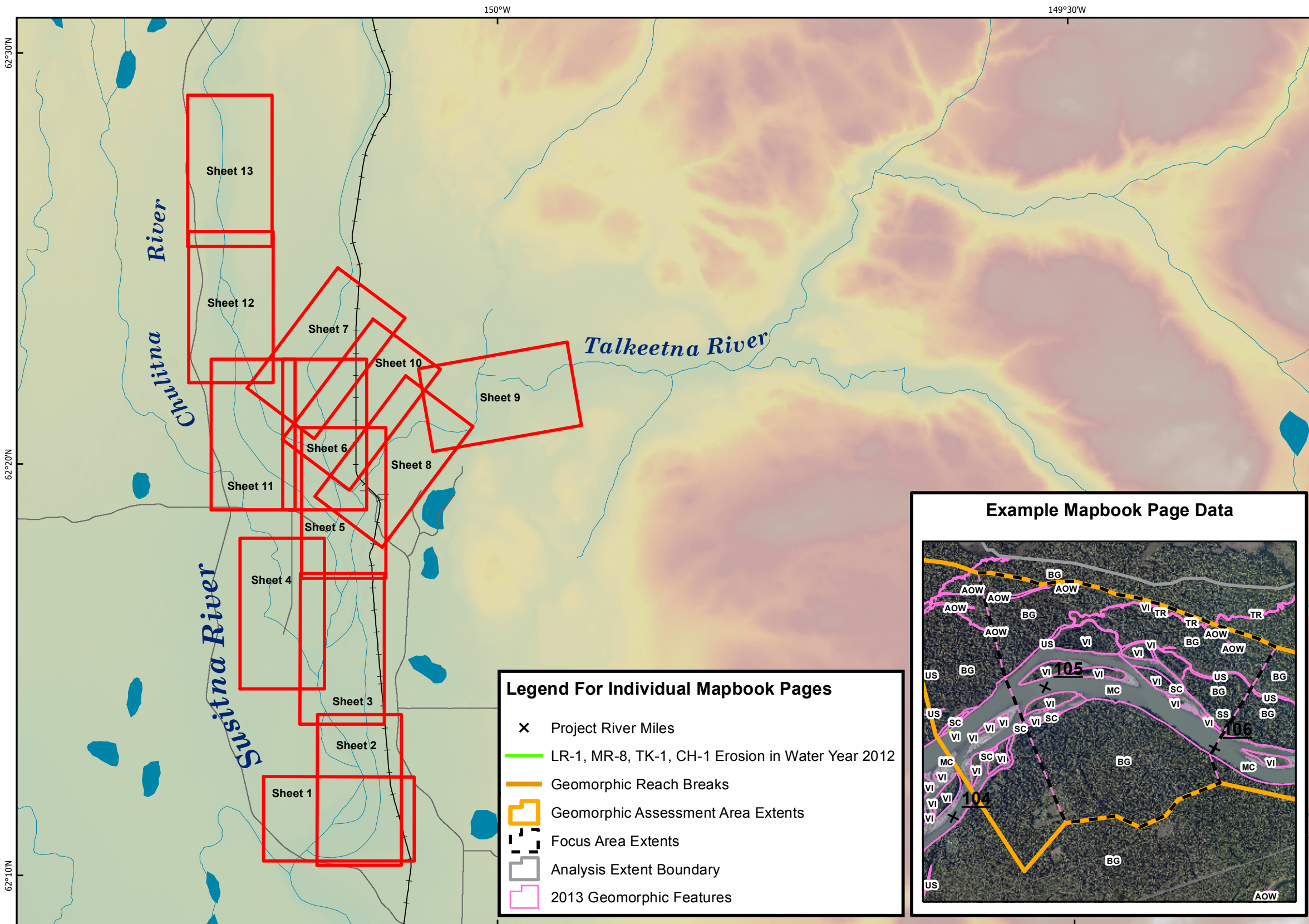
Alaska Energy Authority



Prepared by

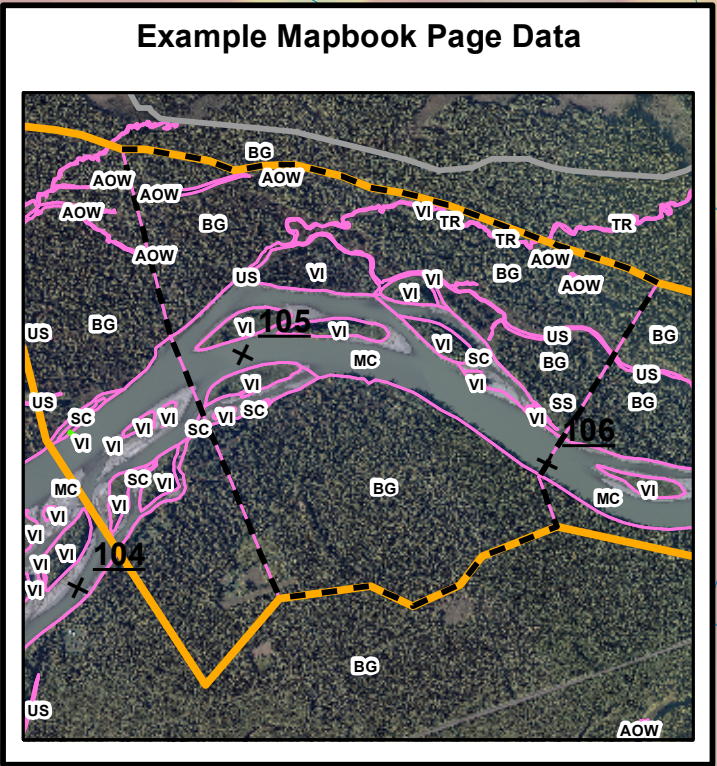
Tetra Tech Inc.

September 2014



Legend For Individual Mapbook Pages

- × Project River Miles
- LR-1, MR-8, TK-1, CH-1 Erosion in Water Year 2012
- Geomorphic Reach Breaks
- Geomorphic Assessment Area Extents
- - - Focus Area Extents
- Analysis Extent Boundary
- 2013 Geomorphic Features

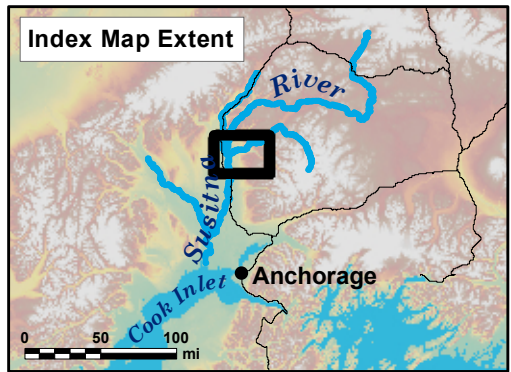


**LR-1, MR-8, TK-1, CH-1
2013 GEOMORPHIC FEATURES**

Legend

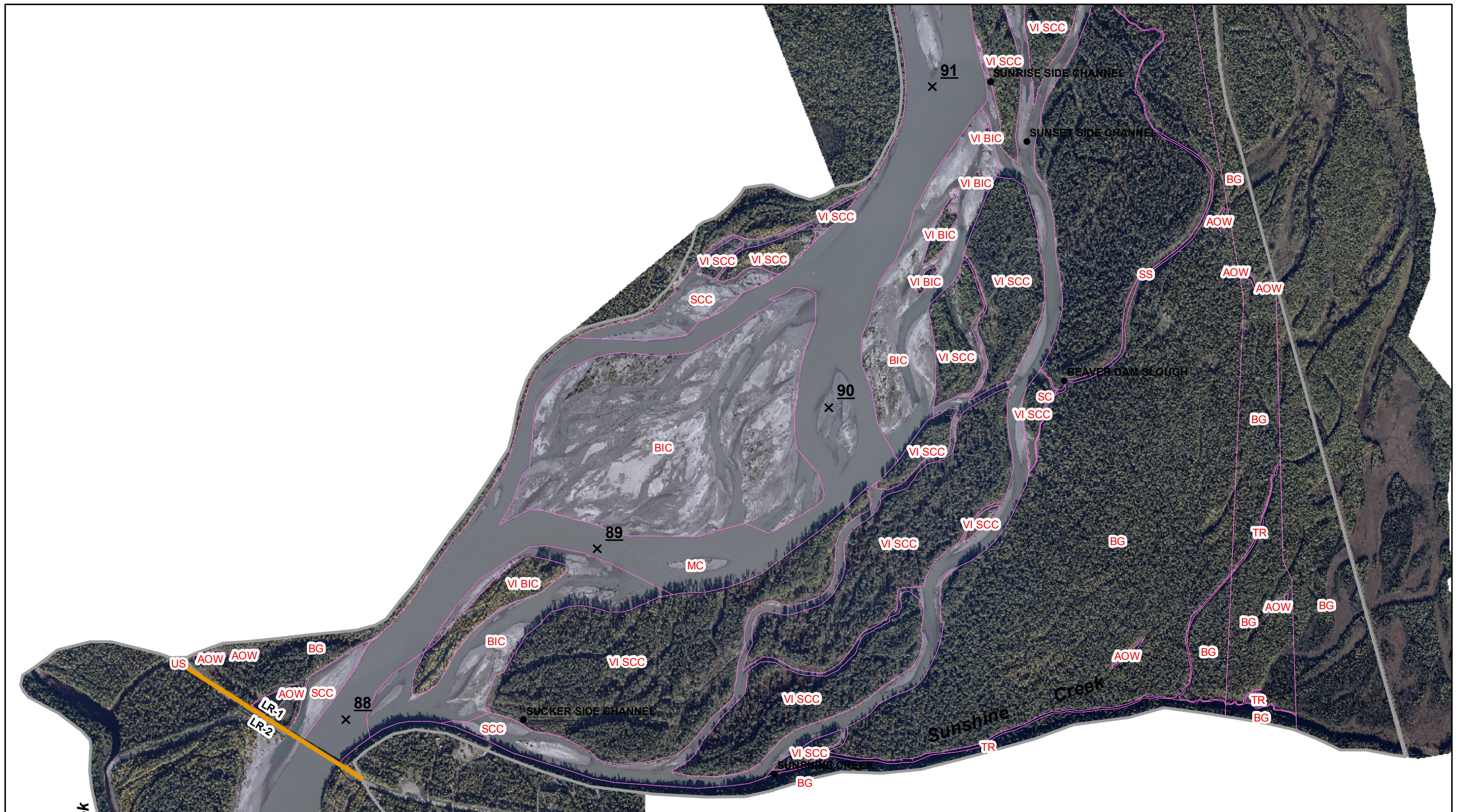
- Sheet Extent
- Roads
- +— Railroads
- Rivers and Streams
- Waterbodies

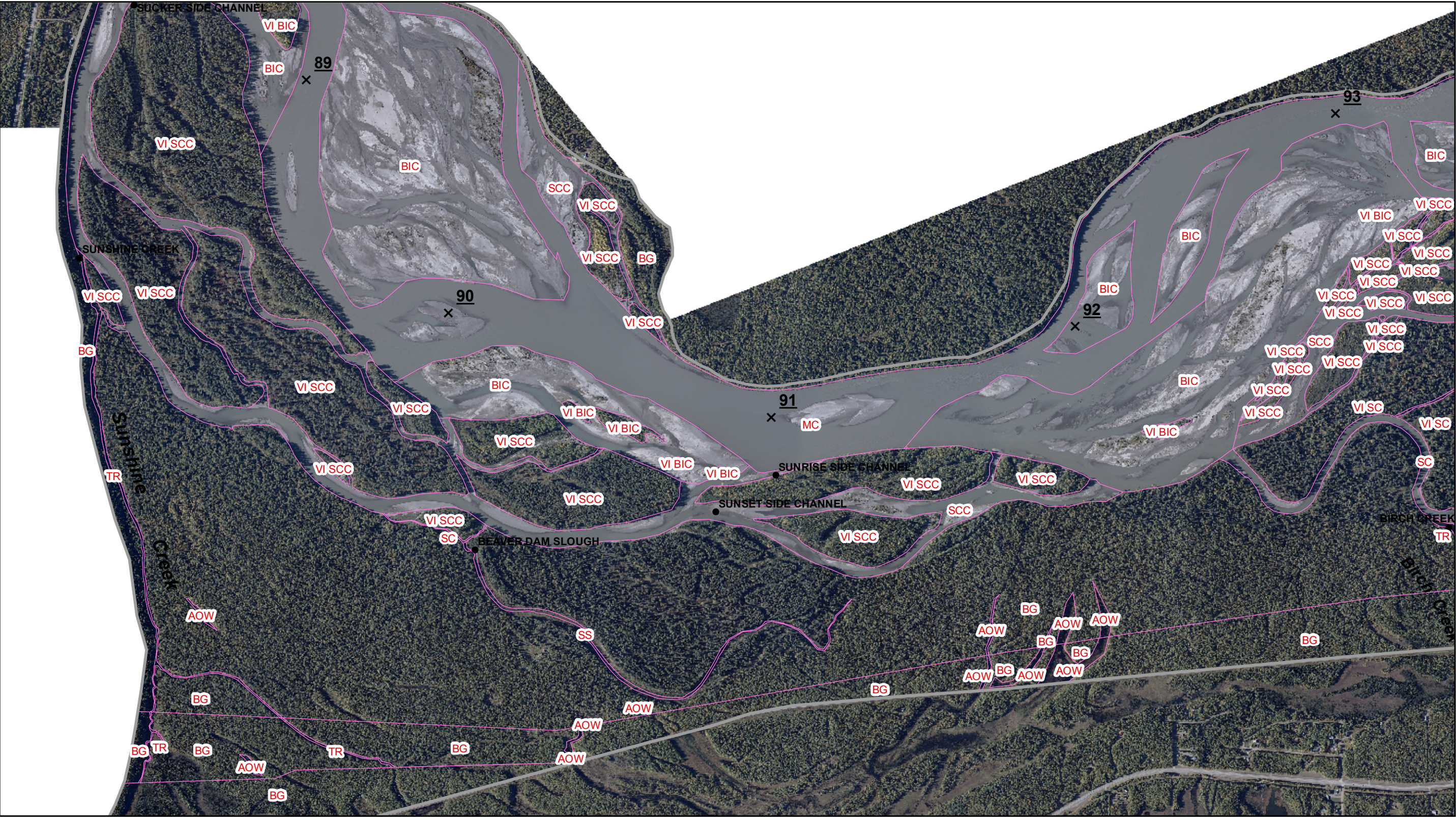
Data Sources: See Map References

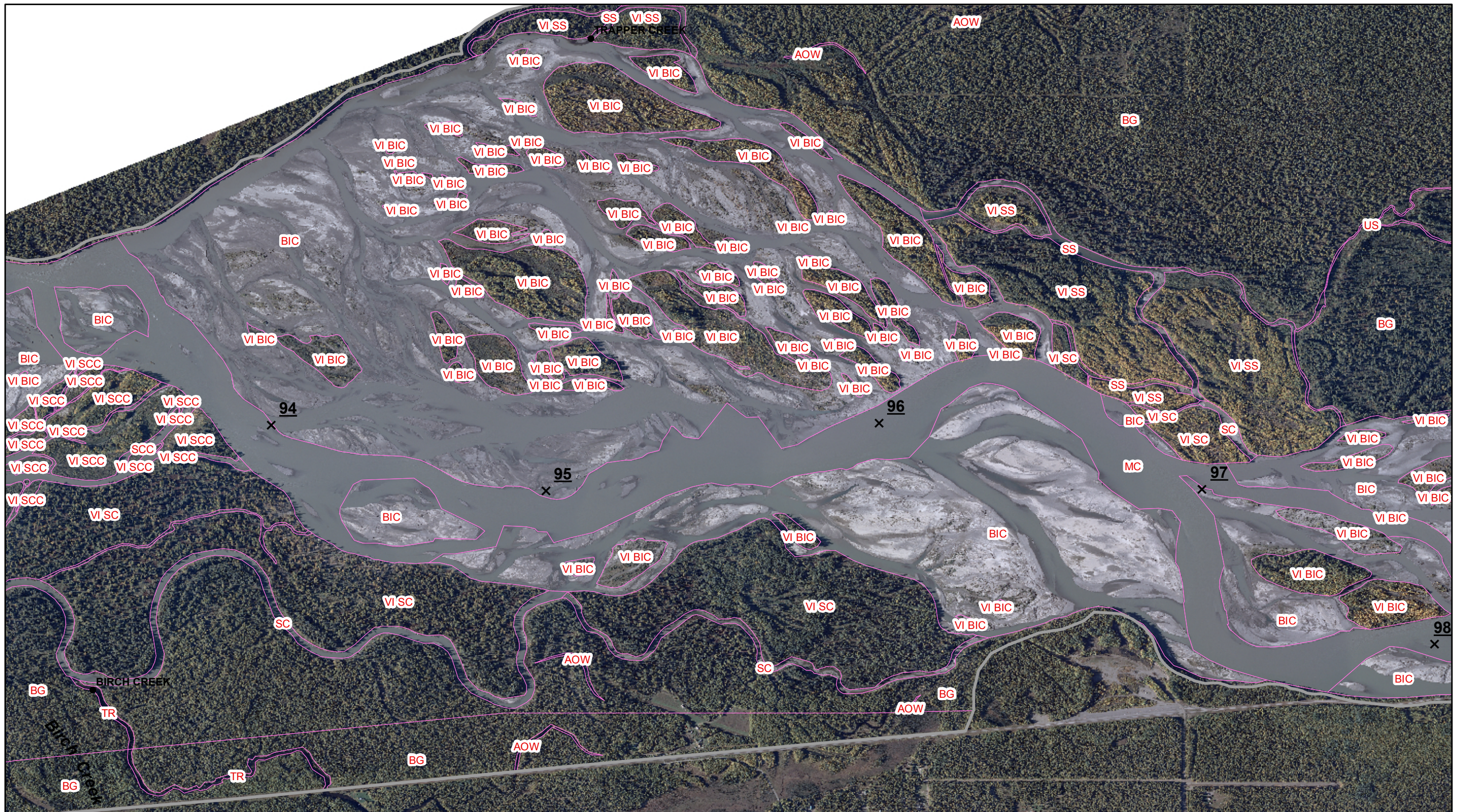


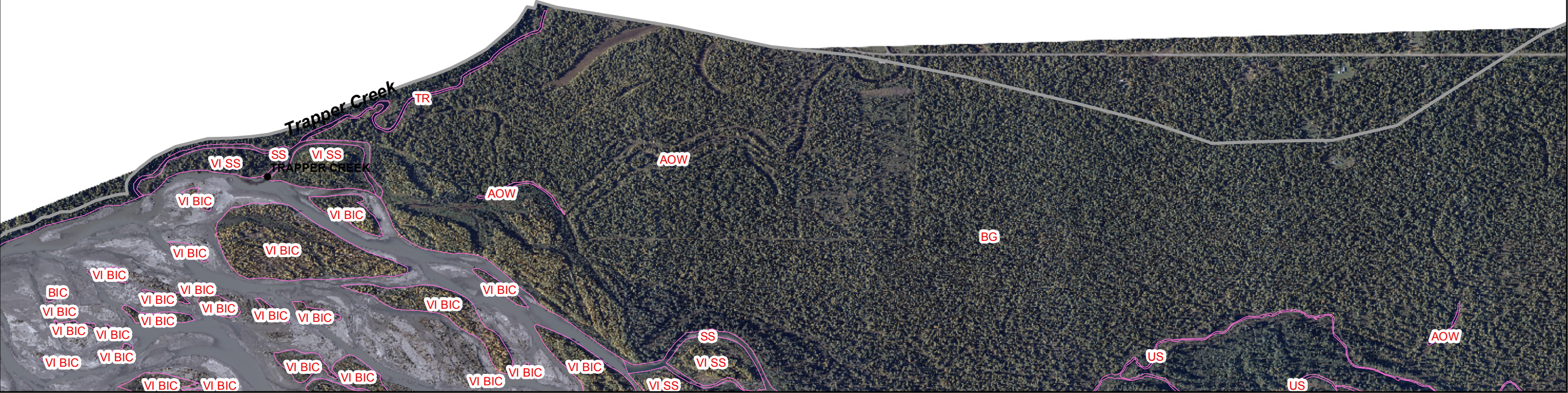
0 3 6 mi

Projection: NAD83 State Plane Alaska 4 FIPS 5004 (ft)
 Date Created: 9/18/2014
 Map Author: Tetra Tech
 File: 2013_3RC_GeomFeat_v1_20140204_cover.mxd



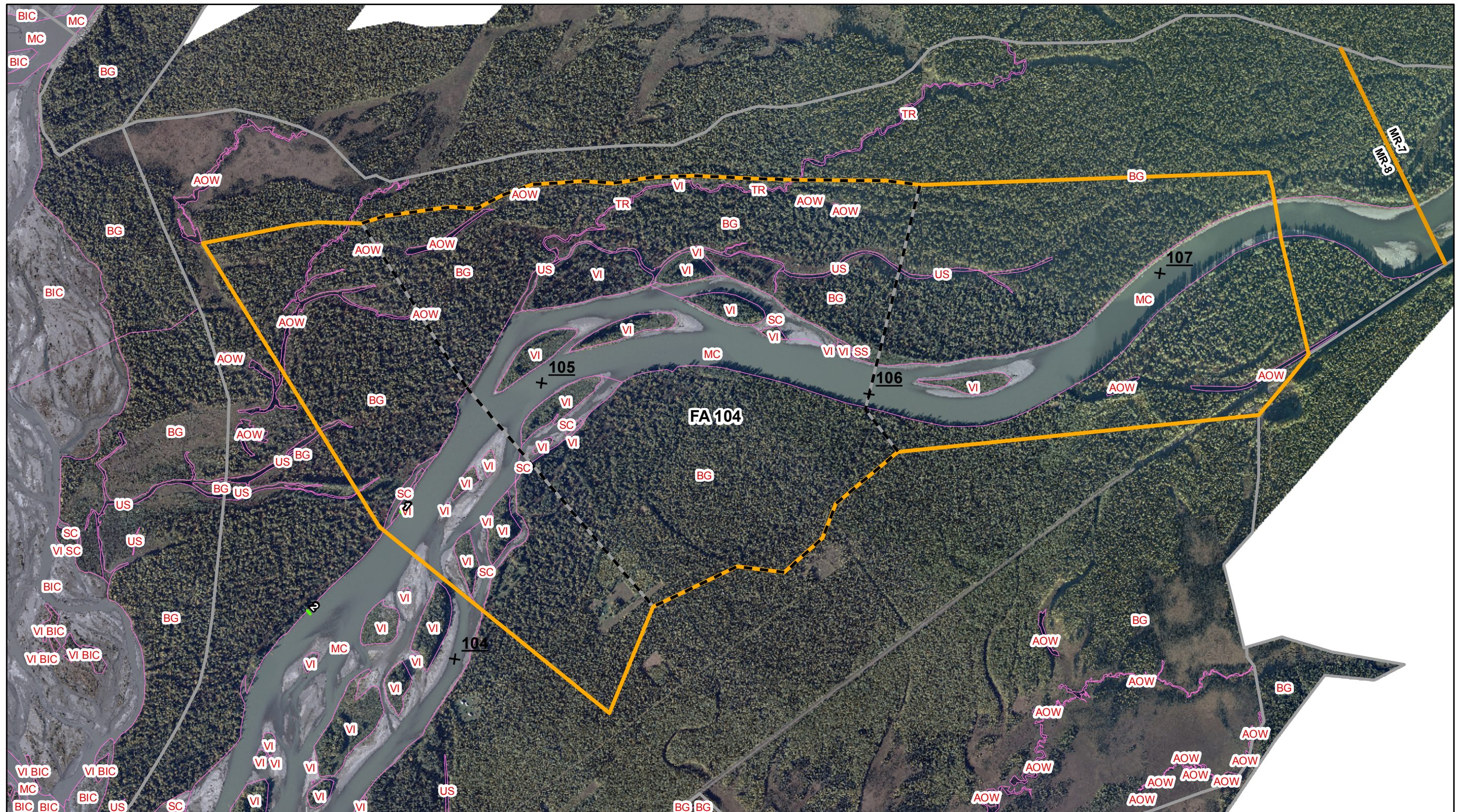












0 1,500 3,000 Feet
1 inch = 1,500 feet

See index page for legend and additional data information.

Sheet 7 of 13

LR-1, MR-8, TK-1, CH-1
2013 GEOMORPHIC FEATURES

Location:	Imagery Date:	Discharge (Gold Cr)	Location:	Imagery Date:	Discharge (Sunshine)
PRM 153.6 - 106.8:	09/24/2013,	11,300 cfs	PRM 102.4 - 0:	09/20/2013,	35,500 cfs
PRM 106.8 - 102.4:	09/20/2013,	15,300 cfs			



