



0 1,000 2,000 Feet
 1 inch = 1,000 feet
 See index page for legend and additional data information.

**MIDDLE SUSITNA RIVER SEGMENT
 2012 GEOMORPHIC FEATURES**

Sheet 17 of 34

Location: Imagery Date, Discharge (Gold Creek)
 PRM 102.4 - 143.6: 09/10/2012, 12,900 cfs
 PRM 143.6 - 187.1: 09/30/2012, 17,000 cfs





0 1,000 2,000 Feet
 1 inch = 1,000 feet
 See index page for legend and additional data information.


Sheet 18 of 34

**MIDDLE SUSITNA RIVER SEGMENT
 2012 GEOMORPHIC FEATURES**

Location: Imagery Date, Discharge (Gold Creek)
 PRM 102.4 - 143.6: 09/10/2012, 12,900 cfs
 PRM 143.6 - 187.1: 09/30/2012, 17,000 cfs



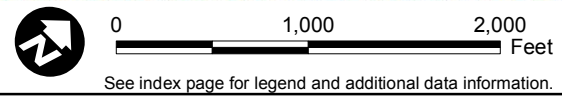



 0 1,000 2,000 Feet
 1 inch = 1,000 feet
Sheet 19 of 34
 See index page for legend and additional data information.

MIDDLE SUSITNA RIVER SEGMENT
2012 GEOMORPHIC FEATURES

Location: Imagery Date, Discharge (Gold Creek)
 PRM 102.4 - 143.6: 09/10/2012, 12,900 cfs
 PRM 143.6 - 187.1: 09/30/2012, 17,000 cfs

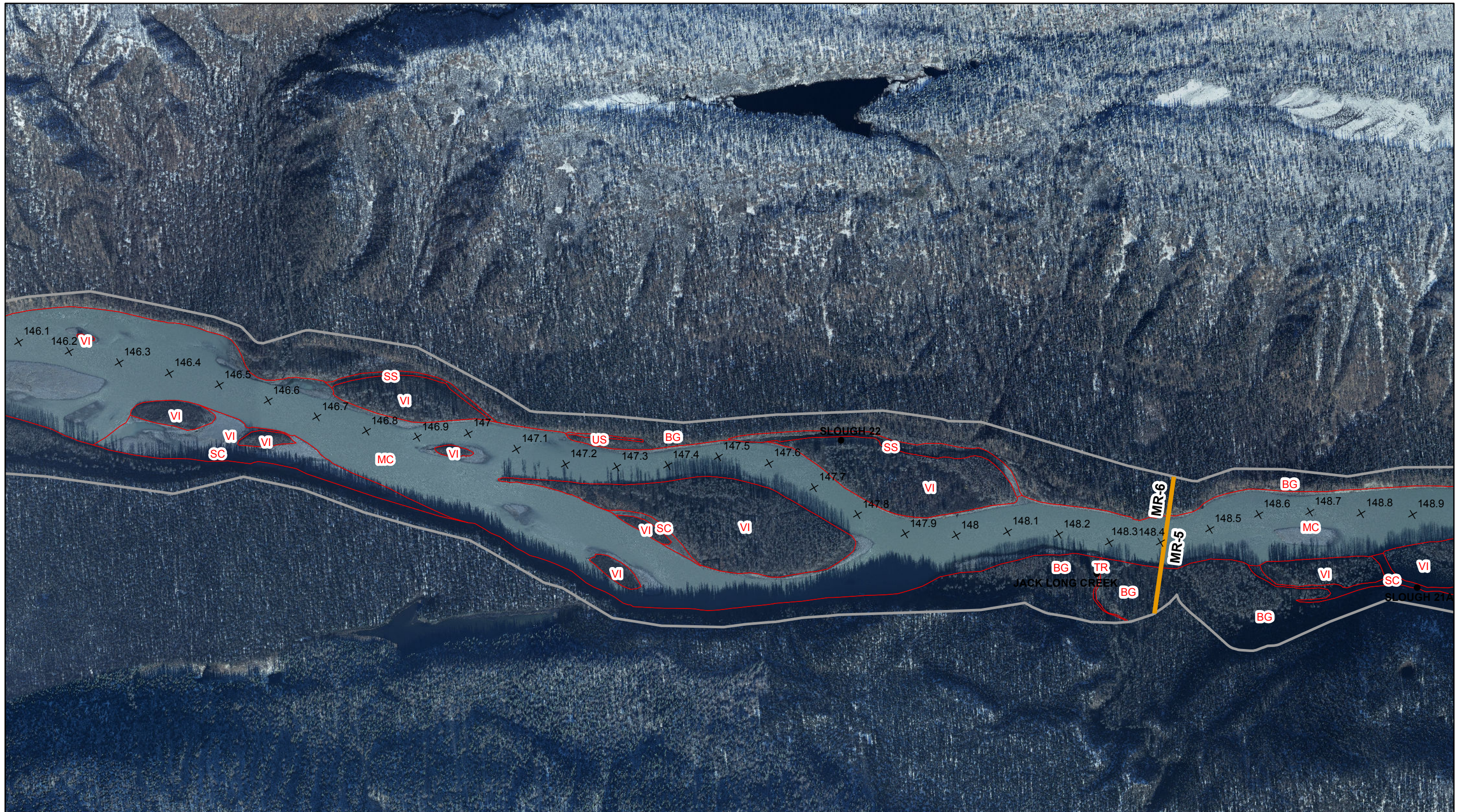




**MIDDLE SUSITNA RIVER SEGMENT
2012 GEOMORPHIC FEATURES**

Location:	Imagery Date:	Discharge (Gold Creek)
PRM 102.4 - 143.6:	09/10/2012,	12,900 cfs
PRM 143.6 - 187.1:	09/30/2012,	17,000 cfs





0 1,000 2,000 Feet

1 inch = 1,000 feet

Sheet 21 of 34

**MIDDLE SUSITNA RIVER SEGMENT
2012 GEOMORPHIC FEATURES**

Location:	Imagery Date:	Discharge (Gold Creek)
PRM 102.4 - 143.6:	09/10/2012,	12,900 cfs
PRM 143.6 - 187.1:	09/30/2012,	17,000 cfs



See index page for legend and additional data information.





0 1,000 2,000 Feet
 1 inch = 1,000 feet
 See index page for legend and additional data information.

Sheet 23 of 34

**MIDDLE SUSITNA RIVER SEGMENT
 2012 GEOMORPHIC FEATURES**

Location: Imagery Date, Discharge (Gold Creek)
 PRM 102.4 - 143.6: 09/10/2012, 12,900 cfs
 PRM 143.6 - 187.1: 09/30/2012, 17,000 cfs





0 1,000 2,000 Feet
 1 inch = 1,000 feet
 See index page for legend and additional data information.


Sheet 24 of 34

**MIDDLE SUSITNA RIVER SEGMENT
 2012 GEOMORPHIC FEATURES**

Location:	Imagery Date:	Discharge (Gold Creek)
PRM 102.4 - 143.6:	09/10/2012,	12,900 cfs
PRM 143.6 - 187.1:	09/30/2012,	17,000 cfs






 0 1,000 2,000
 Feet
 1 inch = 1,000 feet
Sheet 25 of 34
 See index page for legend and additional data information.

MIDDLE SUSITNA RIVER SEGMENT
2012 GEOMORPHIC FEATURES

Location: Imagery Date, Discharge (Gold Creek)
 PRM 102.4 - 143.6: 09/10/2012, 12,900 cfs
 PRM 143.6 - 187.1: 09/30/2012, 17,000 cfs





0 1,000 2,000 Feet
 1 inch = 1,000 feet
 See index page for legend and additional data information.

Sheet 26 of 34

**MIDDLE SUSITNA RIVER SEGMENT
 2012 GEOMORPHIC FEATURES**

Location:	Imagery Date:	Discharge (Gold Creek)
PRM 102.4 - 143.6:	09/10/2012,	12,900 cfs
PRM 143.6 - 187.1:	09/30/2012,	17,000 cfs





0 1,000 2,000 Feet
 1 inch = 1,000 feet
 See index page for legend and additional data information.

Sheet 27 of 34

**MIDDLE SUSITNA RIVER SEGMENT
 2012 GEOMORPHIC FEATURES**

Location:	Imagery Date:	Discharge (Gold Creek)
PRM 102.4 - 143.6:	09/10/2012,	12,900 cfs
PRM 143.6 - 187.1:	09/30/2012,	17,000 cfs





0 1,000 2,000 Feet
 1 inch = 1,000 feet
 See index page for legend and additional data information.

Sheet 28 of 34

**MIDDLE SUSITNA RIVER SEGMENT
 2012 GEOMORPHIC FEATURES**

Location:	Imagery Date:	Discharge (Gold Creek)
PRM 102.4 - 143.6:	09/10/2012,	12,900 cfs
PRM 143.6 - 187.1:	09/30/2012,	17,000 cfs





0 1,000 2,000 Feet
 1 inch = 1,000 feet
 See index page for legend and additional data information.

Sheet 29 of 34

**MIDDLE SUSITNA RIVER SEGMENT
 2012 GEOMORPHIC FEATURES**

Location:	Imagery Date:	Discharge (Gold Creek)
PRM 102.4 - 143.6:	09/10/2012,	12,900 cfs
PRM 143.6 - 187.1:	09/30/2012,	17,000 cfs





0 1,000 2,000 Feet
1 inch = 1,000 feet
See index page for legend and additional data information.

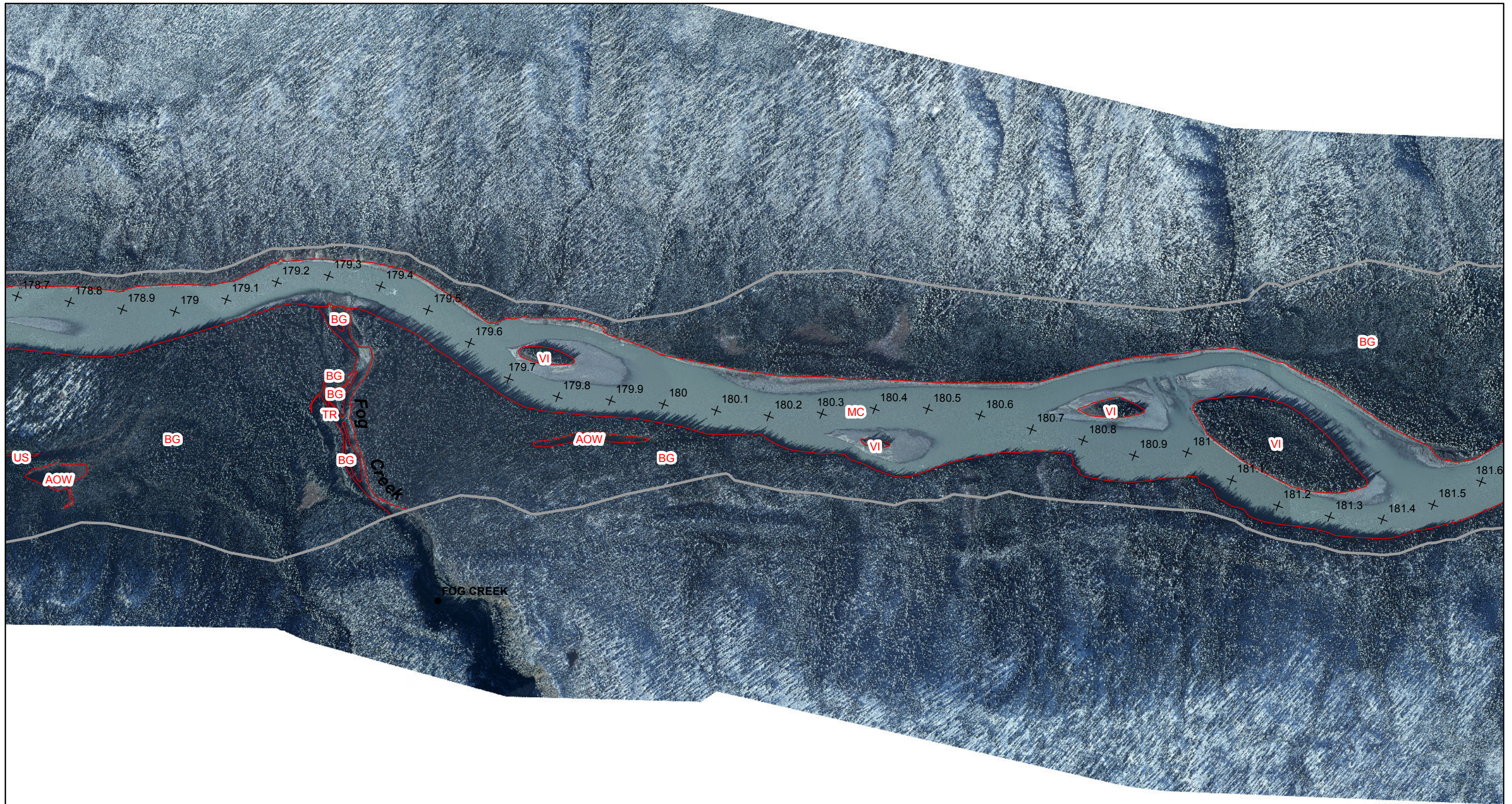
Sheet 30 of 34

**MIDDLE SUSITNA RIVER SEGMENT
2012 GEOMORPHIC FEATURES**

Location: Imagery Date, Discharge (Gold Creek)
PRM 102.4 - 143.6: 09/10/2012, 12,900 cfs
PRM 143.6 - 187.1: 09/30/2012, 17,000 cfs







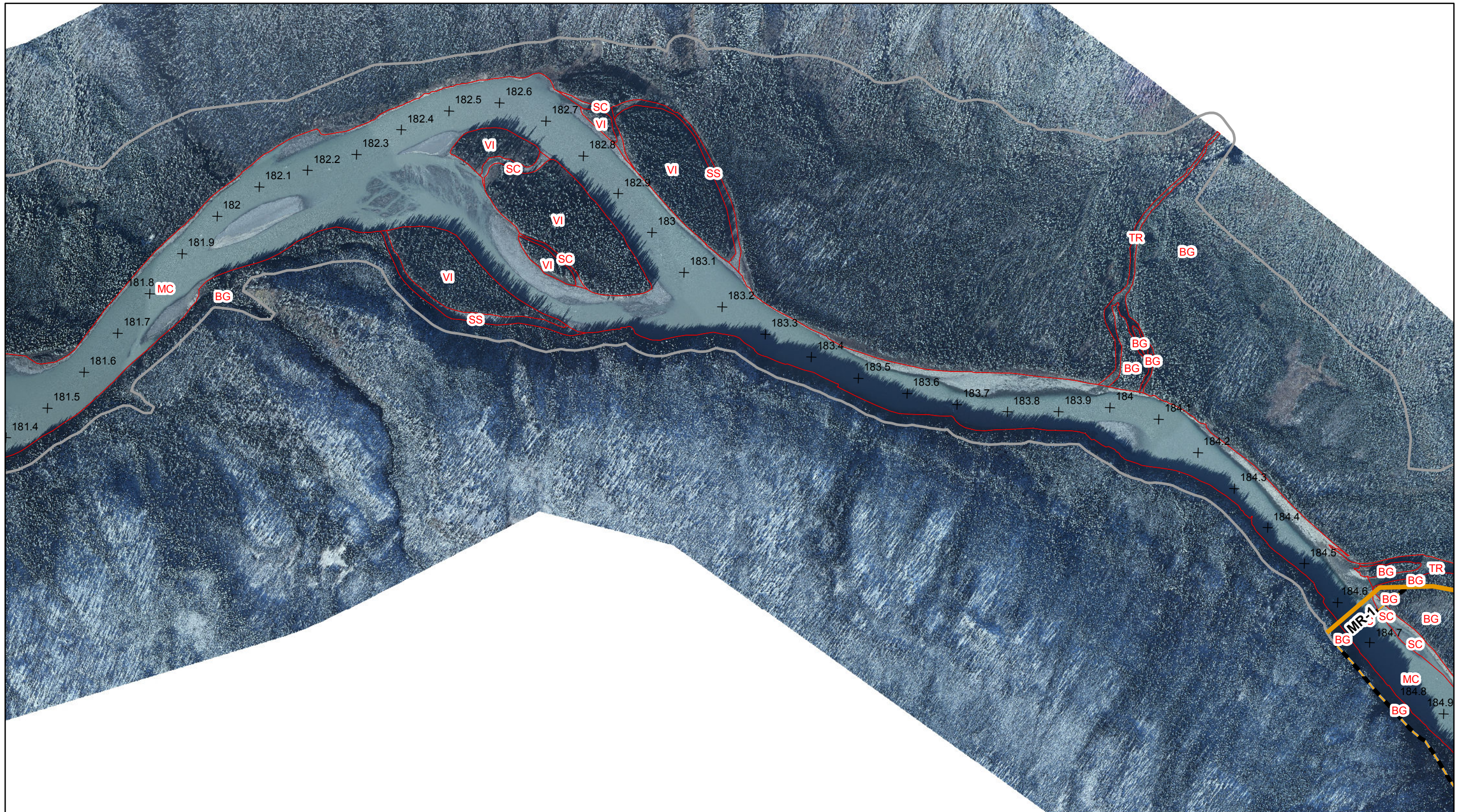
0 1,000 2,000 Feet
 1 inch = 1,000 feet
 See index page for legend and additional data information.

**MIDDLE SUSITNA RIVER SEGMENT
 2012 GEOMORPHIC FEATURES**

Sheet 32 of 34

Location:	Imagery Date:	Discharge (Gold Creek)
PRM 102.4 - 143.6:	09/10/2012,	12,900 cfs
PRM 143.6 - 187.1:	09/30/2012,	17,000 cfs





0 1,000 2,000 Feet

1 inch = 1,000 feet

Sheet 33 of 34

**MIDDLE SUSITNA RIVER SEGMENT
2012 GEOMORPHIC FEATURES**

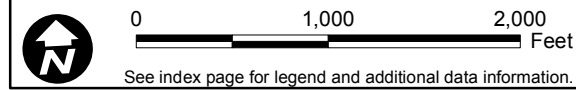
Location: Imagery Date, Discharge (Gold Creek)
 PRM 102.4 - 143.6: 09/10/2012, 12,900 cfs
 PRM 143.6 - 187.1: 09/30/2012, 17,000 cfs



See index page for legend and additional data information.



● TSUSENA CREEK



**MIDDLE SUSITNA RIVER SEGMENT
2012 GEOMORPHIC FEATURES**

Sheet 34 of 34

Location:	Imagery Date:	Discharge (Gold Creek)
PRM 102.4 - 143.6:	09/10/2012,	12,900 cfs
PRM 143.6 - 187.1:	09/30/2012,	17,000 cfs

