

APPENDIX C. 2012 MIDDLE SUSITNA RIVER SEGMENT GEOMORPHIC FEATURES

**Susitna-Watana Hydroelectric Project
(FERC No. 14241)**

Geomorphology Study (6.5)

**Mapping of Geomorphic Features and Turnover
within the Middle and Lower Susitna River Segments
from 1950s, 1980s, and Current Aerials
Technical Memorandum**

Prepared for

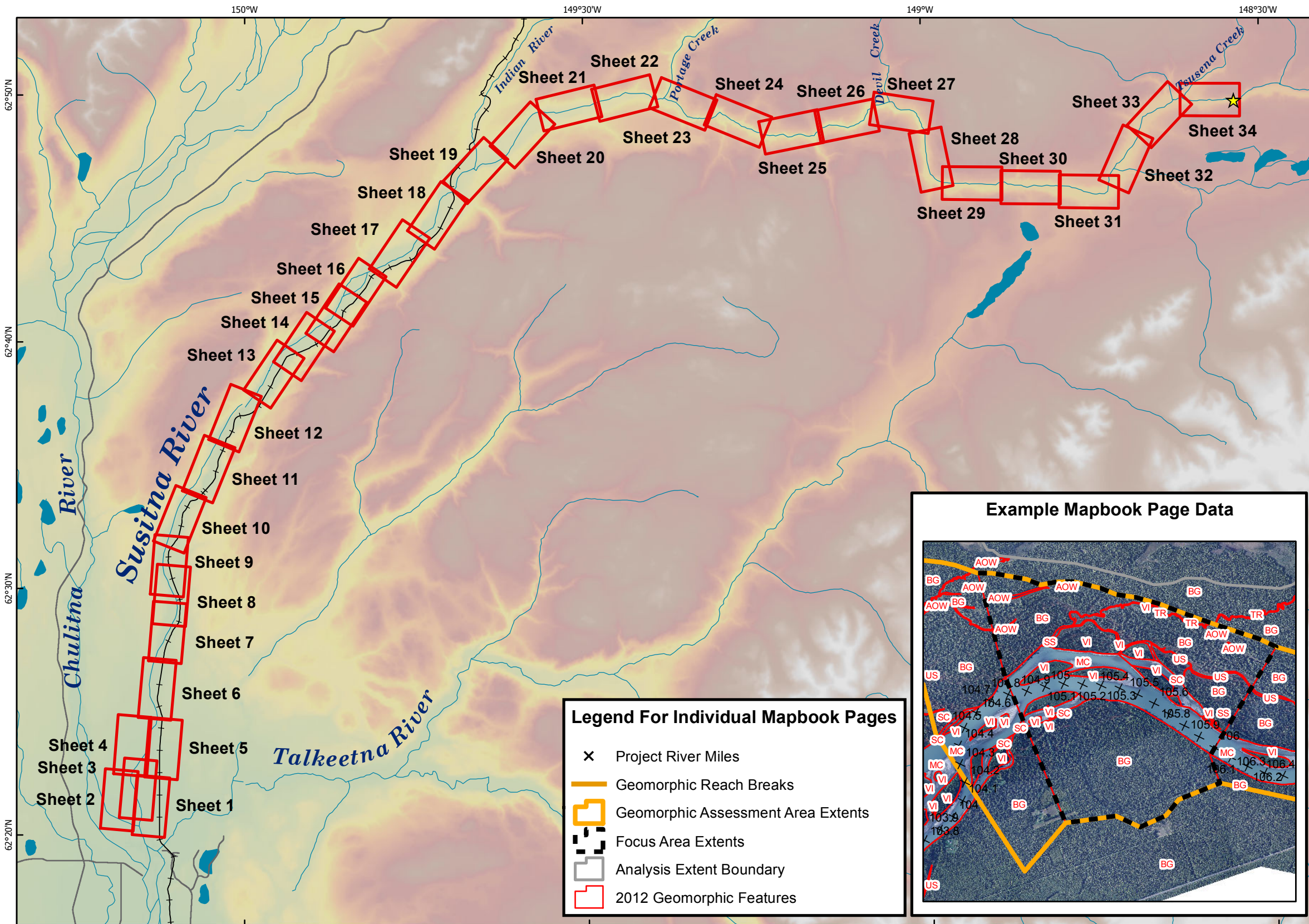
Alaska Energy Authority



Prepared by

Tetra Tech Inc.

September 2014



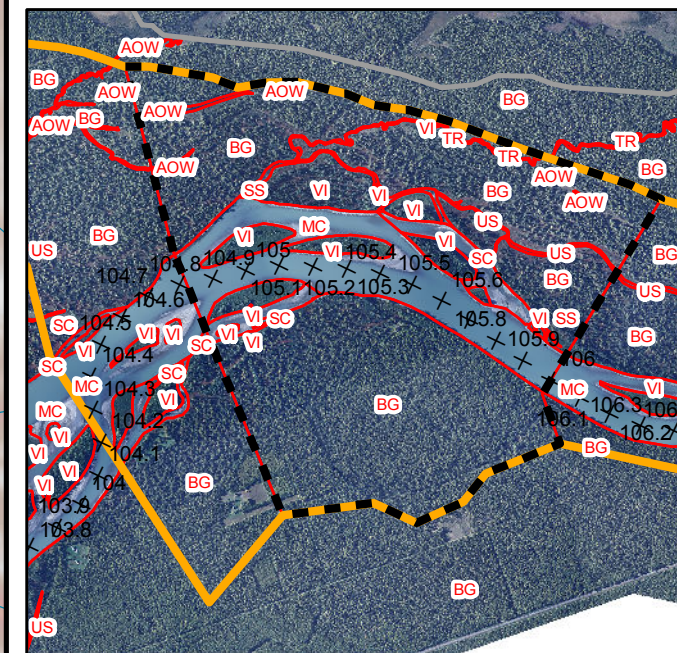
MIDDLE SUSITNA RIVER SEGMENT 2012 GEOMORPHIC FEATURES

Legend

- ★ Proposed Watana Dam Site
- Sheet Extents
- Roads
- +— Railroads
- ~ Rivers and Streams
- Waterbodies

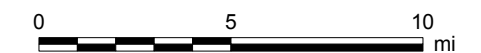
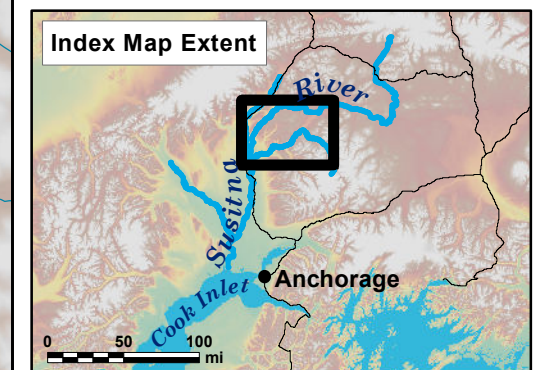
Data Sources: See Map References

Example Mapbook Page Data



Legend For Individual Mapbook Pages

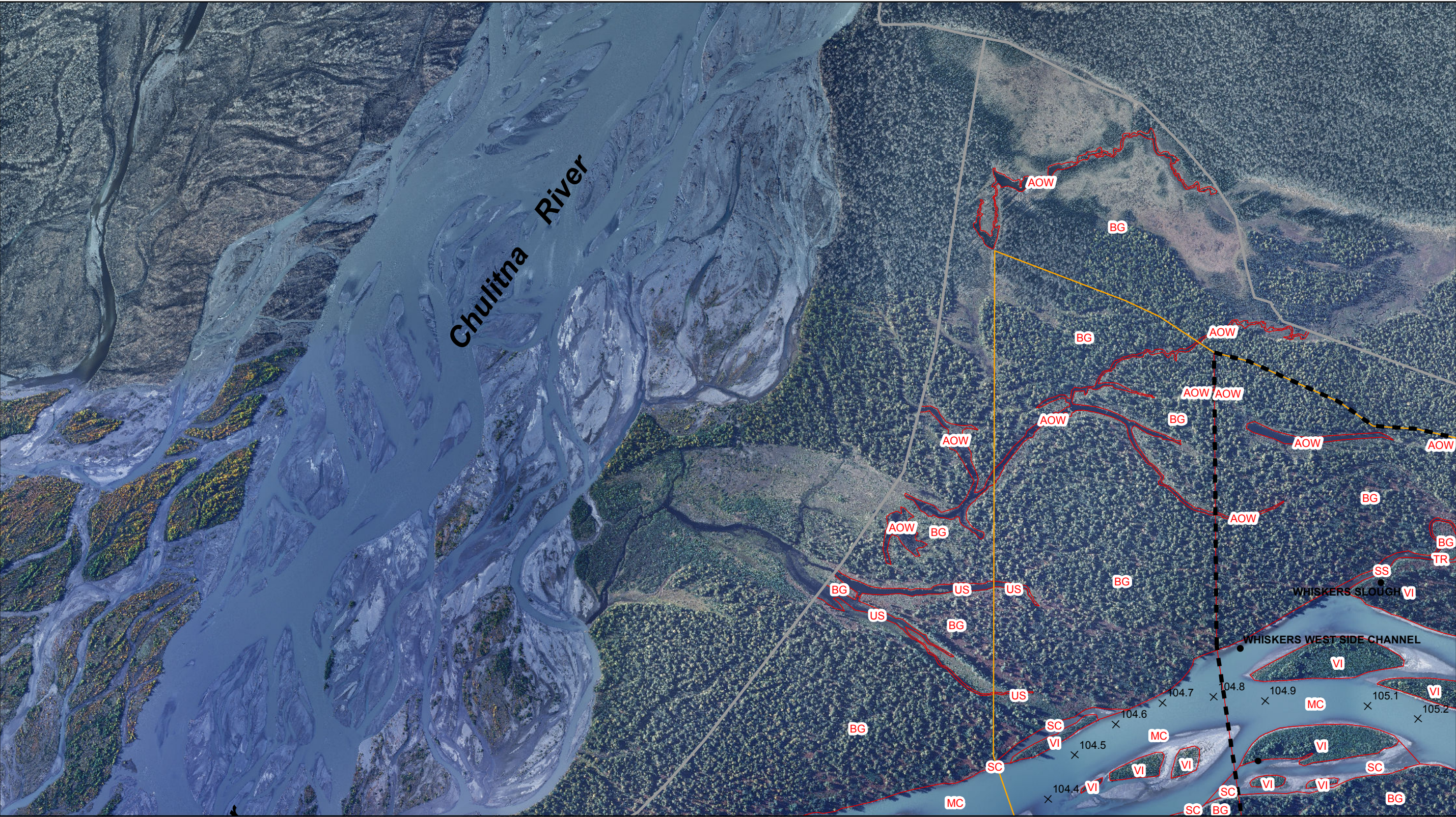
- × Project River Miles
- Geomorphic Reach Breaks
- Geomorphic Assessment Area Extents
- Focus Area Extents
- Analysis Extent Boundary
- 2012 Geomorphic Features

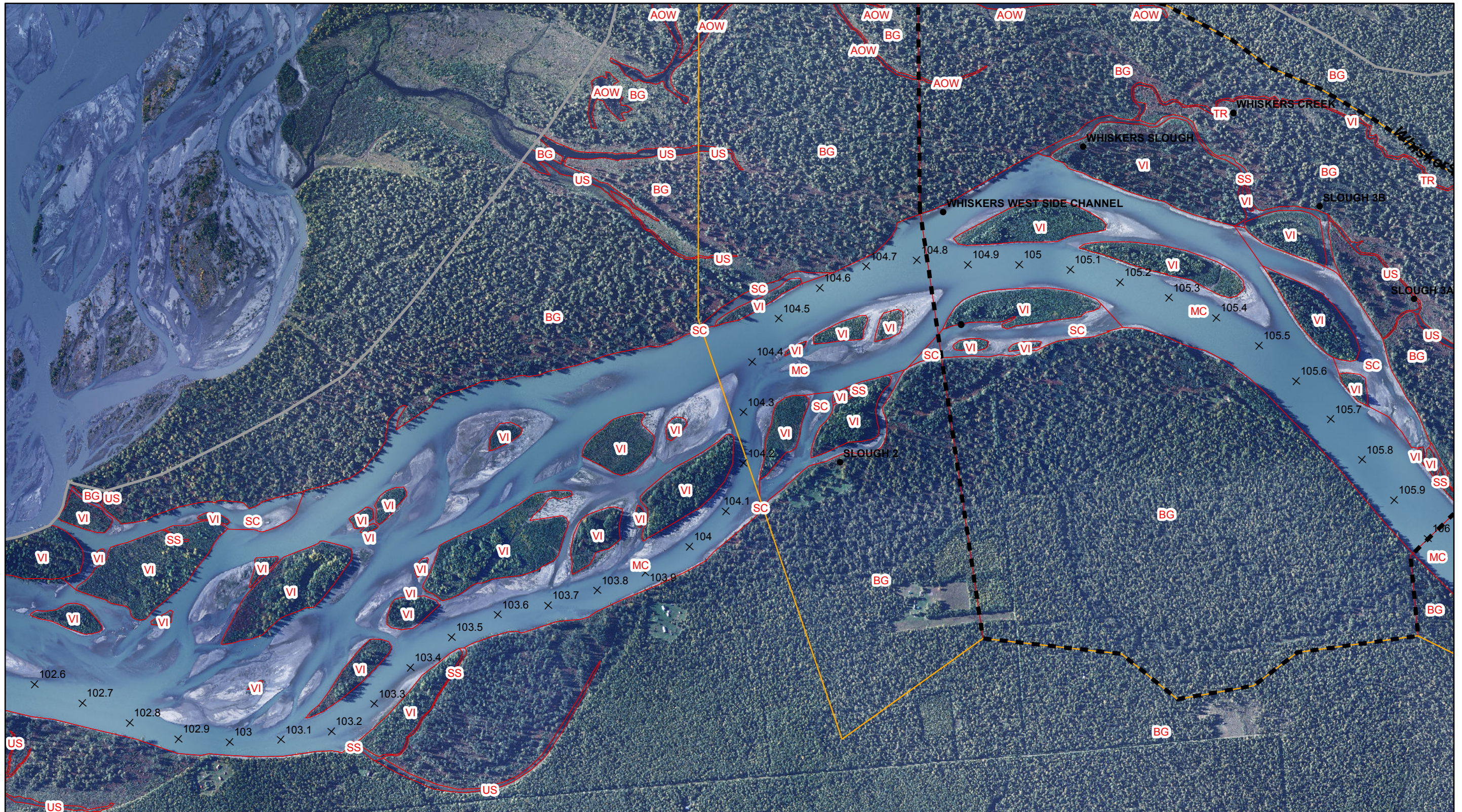


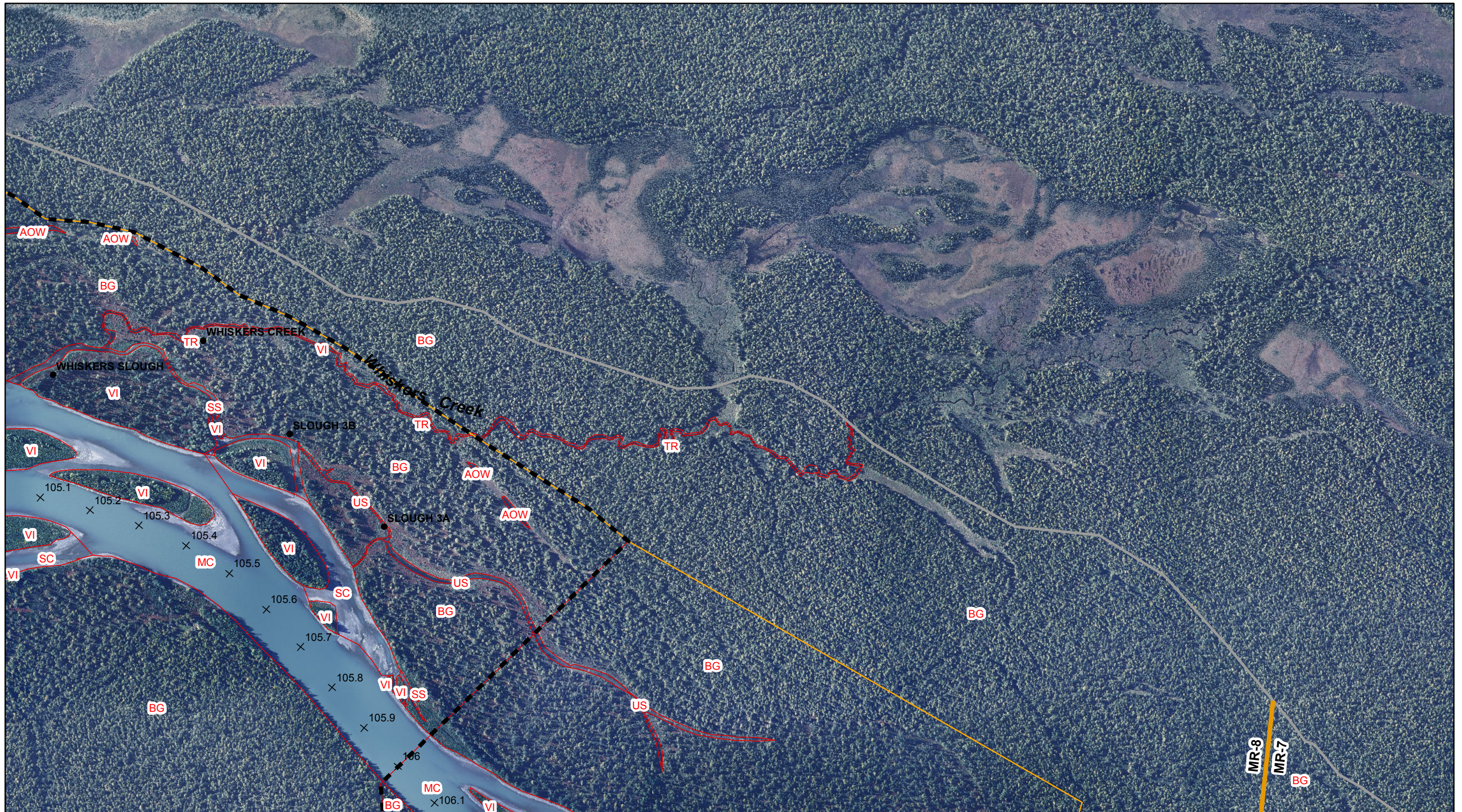
Projection: NAD83 State Plane Alaska 4 FIPS 5004 (ft)
Date Created: 8/20/2014
Map Author: Tetra Tech
File: GeomFeat_2012_MR_2010423_Cover.mxd

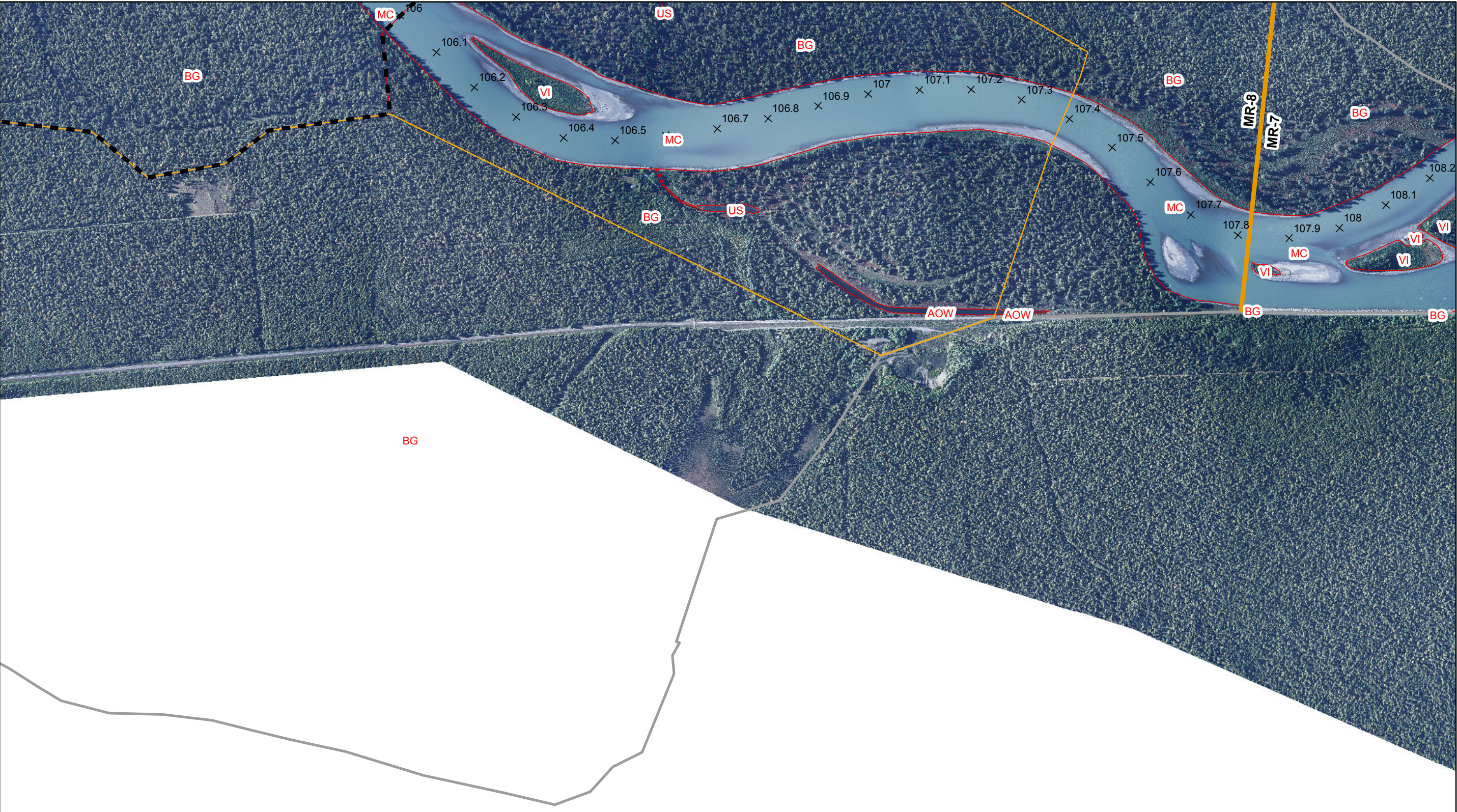






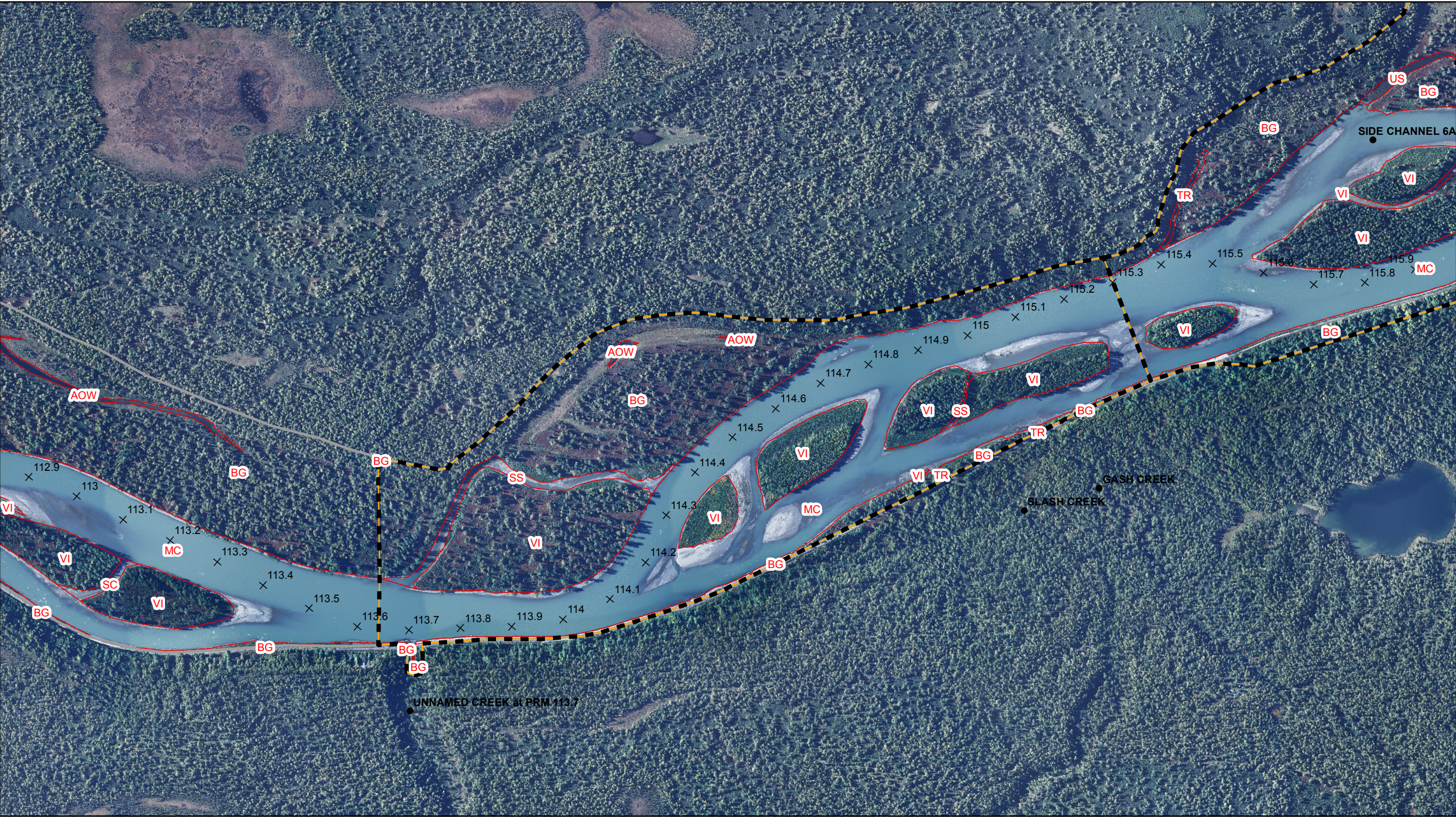


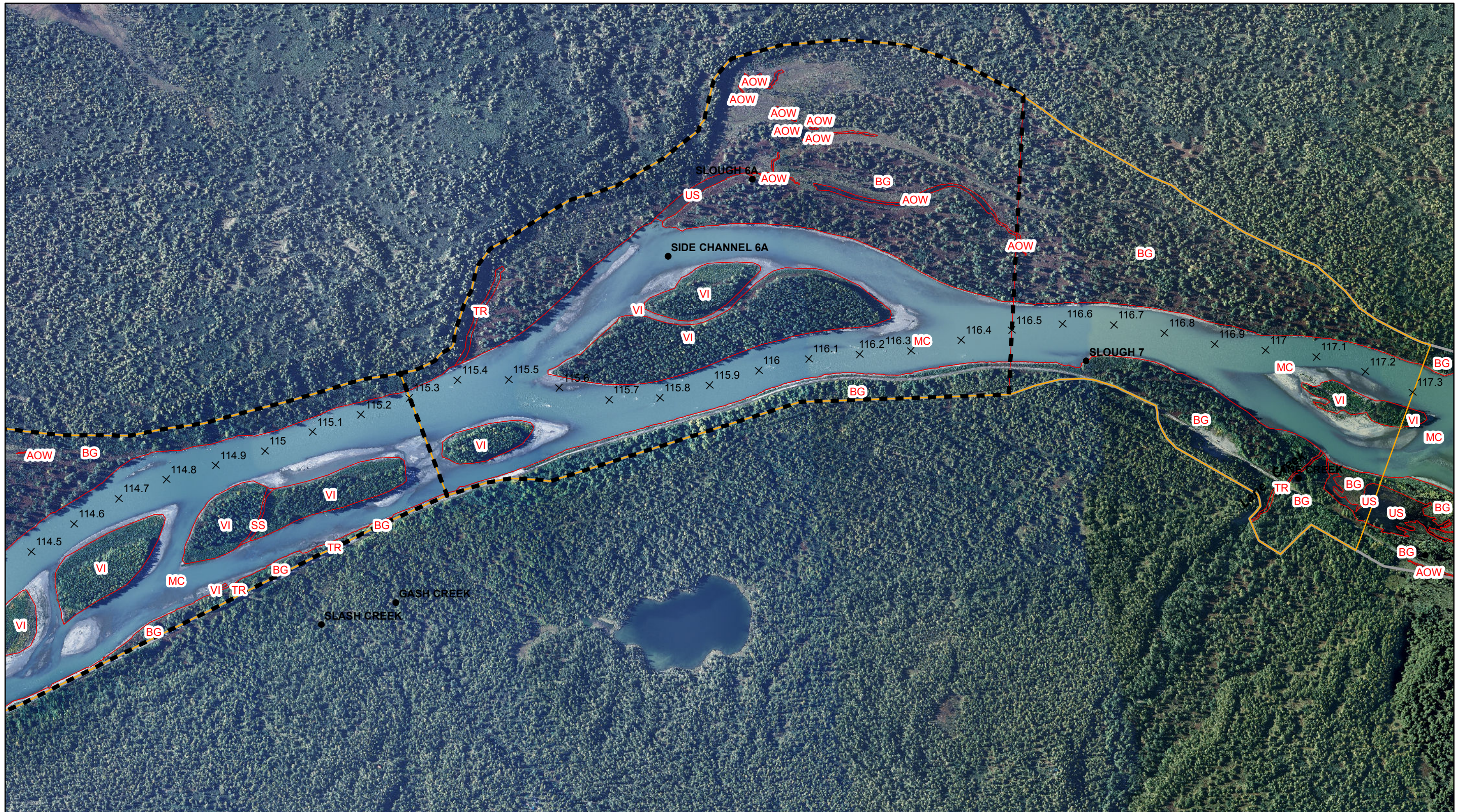




















0 1,000 2,000 Feet

1 inch = 1,000 feet

Sheet 14 of 34

MIDDLE SUSITNA RIVER SEGMENT 2012 GEOMORPHIC FEATURES

See index page for legend and additional data information.

Location: Imagery Date, Discharge (Gold Creek)
PRM 102.4 - 143.6: 09/10/2012, 12,900 cfs
PRM 143.6 - 187.1: 09/30/2012, 17,000 cfs





0 1,000 2,000
Feet

1 inch = 1,000 feet

Sheet 15 of 34

**MIDDLE SUSITNA RIVER SEGMENT
2012 GEOMORPHIC FEATURES**

Location: Imagery Date, Discharge (Gold Creek)
PRM 102.4 - 143.6: 09/10/2012, 12,900 cfs
PRM 143.6 - 187.1: 09/30/2012, 17,000 cfs



