

PART A - APPENDIX D: SUMMER TRAILS

PART A - APPENDIX E: ADF&G FISH HARVEST DATA

PART A - APPENDIX F: FACILITY INVENTORY

**Susitna-Watana Hydroelectric Project  
(FERC No. 14241)**

**Recreation Resources Study (12.5)**

**Part A - Appendix D  
Summer Trails**

**Initial Study Report**

Prepared for

Alaska Energy Authority



**SUSITNA-WATANA HYDRO**

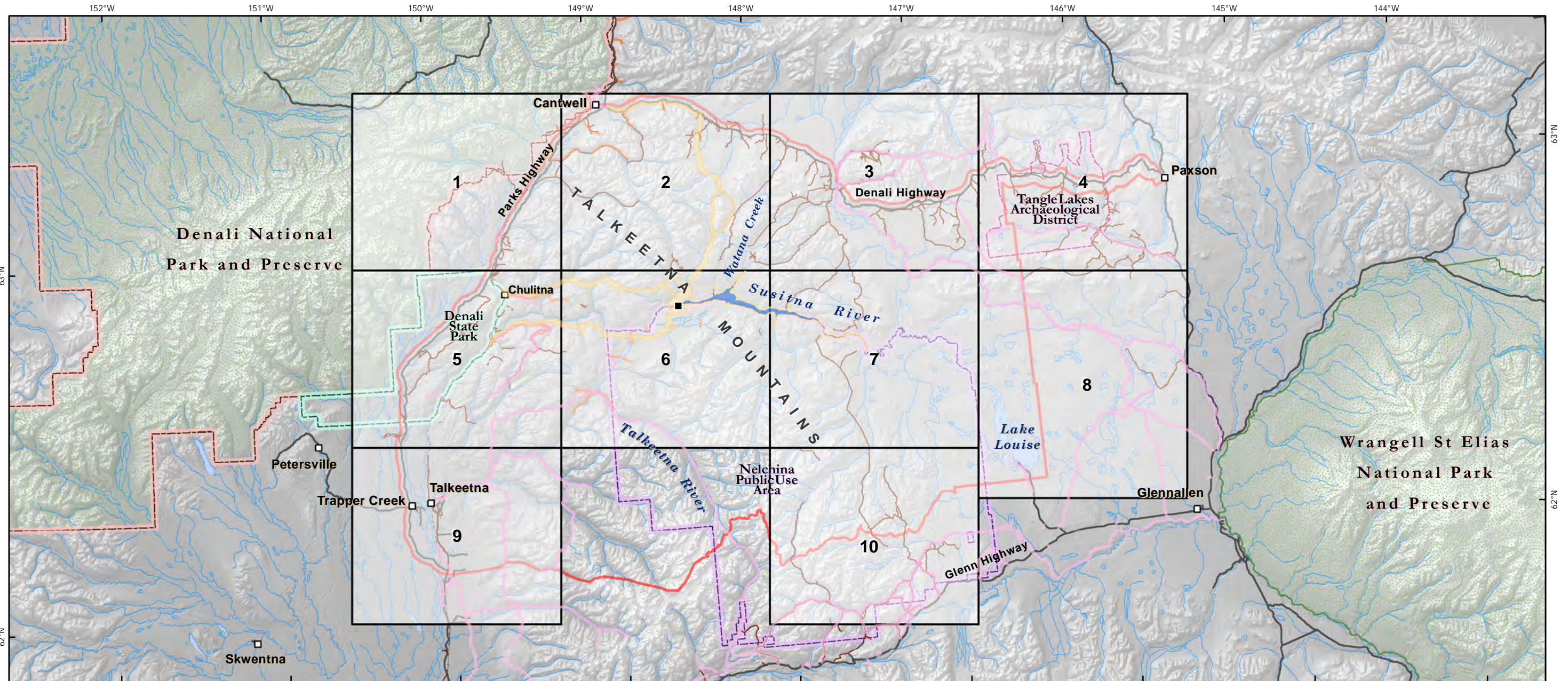
*Clean, reliable energy for the next 100 years.*

Prepared by

URS Corporation

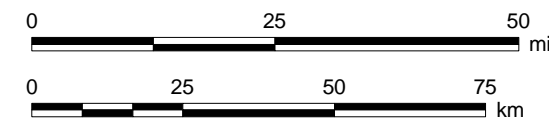
June 2014





**Legend**

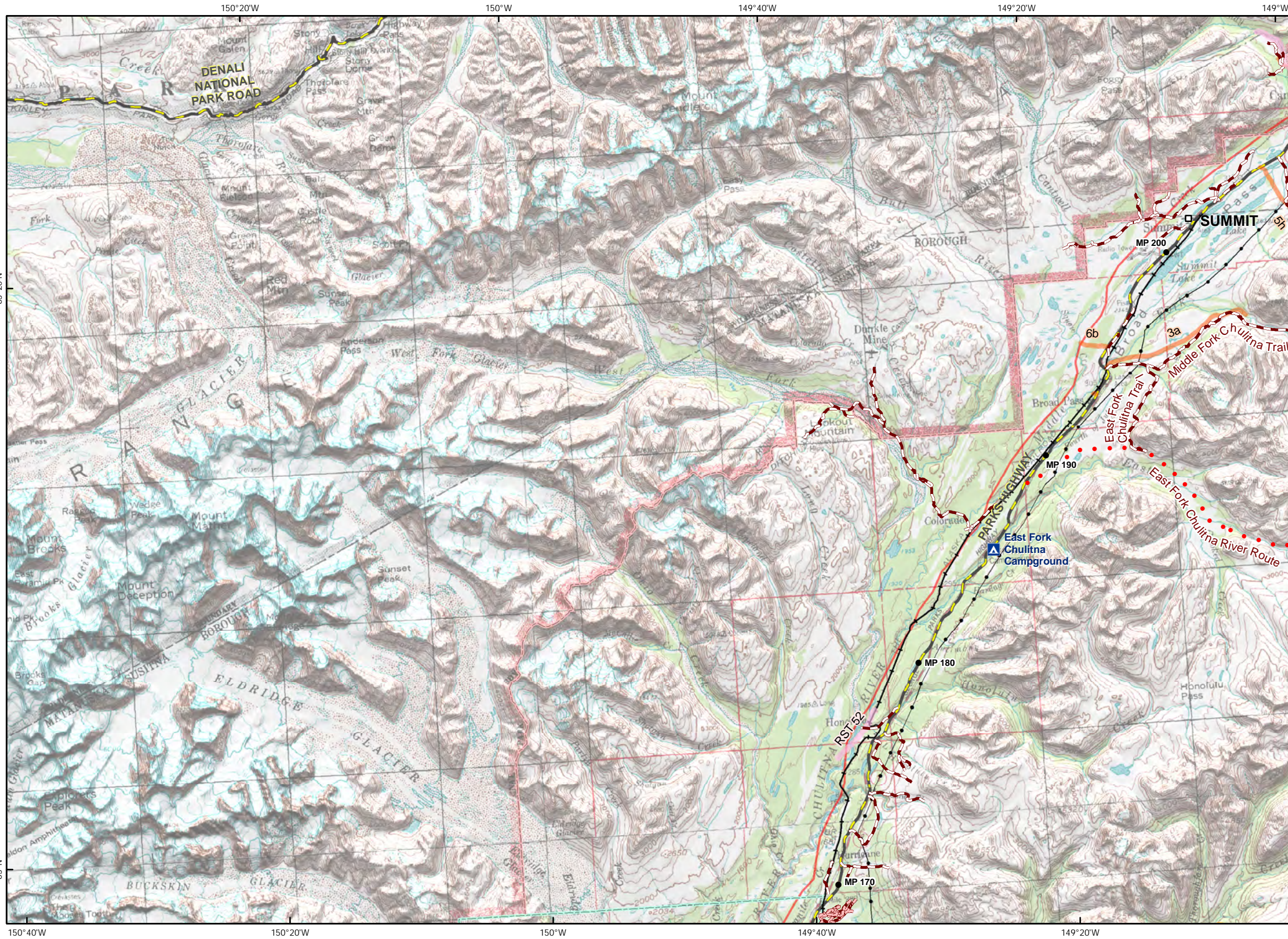
- |                            |                  |                              |  |
|----------------------------|------------------|------------------------------|--|
| ■ Proposed Watana Dam Site | ~ 17b Easements  | ~ Recreation Use Study Area  | ~ Denali State Park                    |
| Summer Trails Map Index    | ~ Rivers/Streams | ~ Proposed Watana Reservoir  | ~ Denali National Park & Preserve      |
| ~ Summer Trails            | — Major Road     | ~ Proposed Project Area      | ~ Nelchina Public Use Area             |
| ~ RS 2477                  | — Railroad       | ~ National Park and Preserve | ~ Tangle Lakes Archaeological District |



Disclaimer: Some map attributes may be located on private lands; this study report is not intended to suggest that the recreating public is authorized to access these lands for recreation purposes.

Projection: Alaska Albers NAD 1983  
 Date Created: 12/17/2013  
 Map Author: Courtney Smith, URS Anchorage  
 File: Summer\_Trails\_ISR\_OverviewMap.mxd  
 Data Sources: See Map References





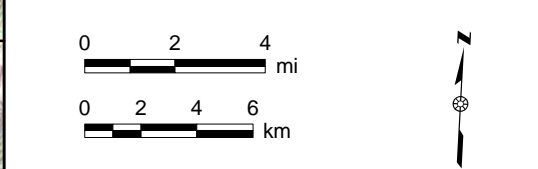
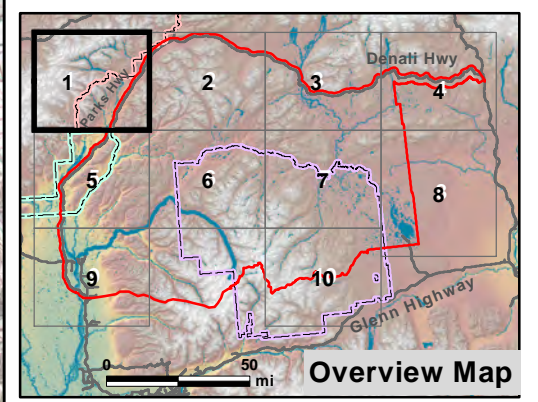
### Legend

- Road Milepost
- Project River Miles
- 🏠 Lodge
- 📍 Trailhead
- 🏕️ Campground
- Proposed Watana Dam Site
- 👤 Digitized Trails
- 👤 Summer Trails Inventory
- 👤 Route
- 👤 RS 2477
- 👤 17b Easements
- 👤 Existing Intertie
- 👤 Alaska Railroad
- 👤 Roads
- 🌊 Proposed Watana Reservoir
- 👤 Proposed Project Area
- 👤 Denali State Park
- 👤 Denali National Park & Preserve
- 👤 Nelchina Public Use Area
- 👤 Tangle Lakes Archaeological District
- 👤 Delta National Wild Scenic and Recreational River
- 👤 Gulkana National Wild River
- 👤 Recreation Use Study Area

**Map 2** Data Sources: See Map References

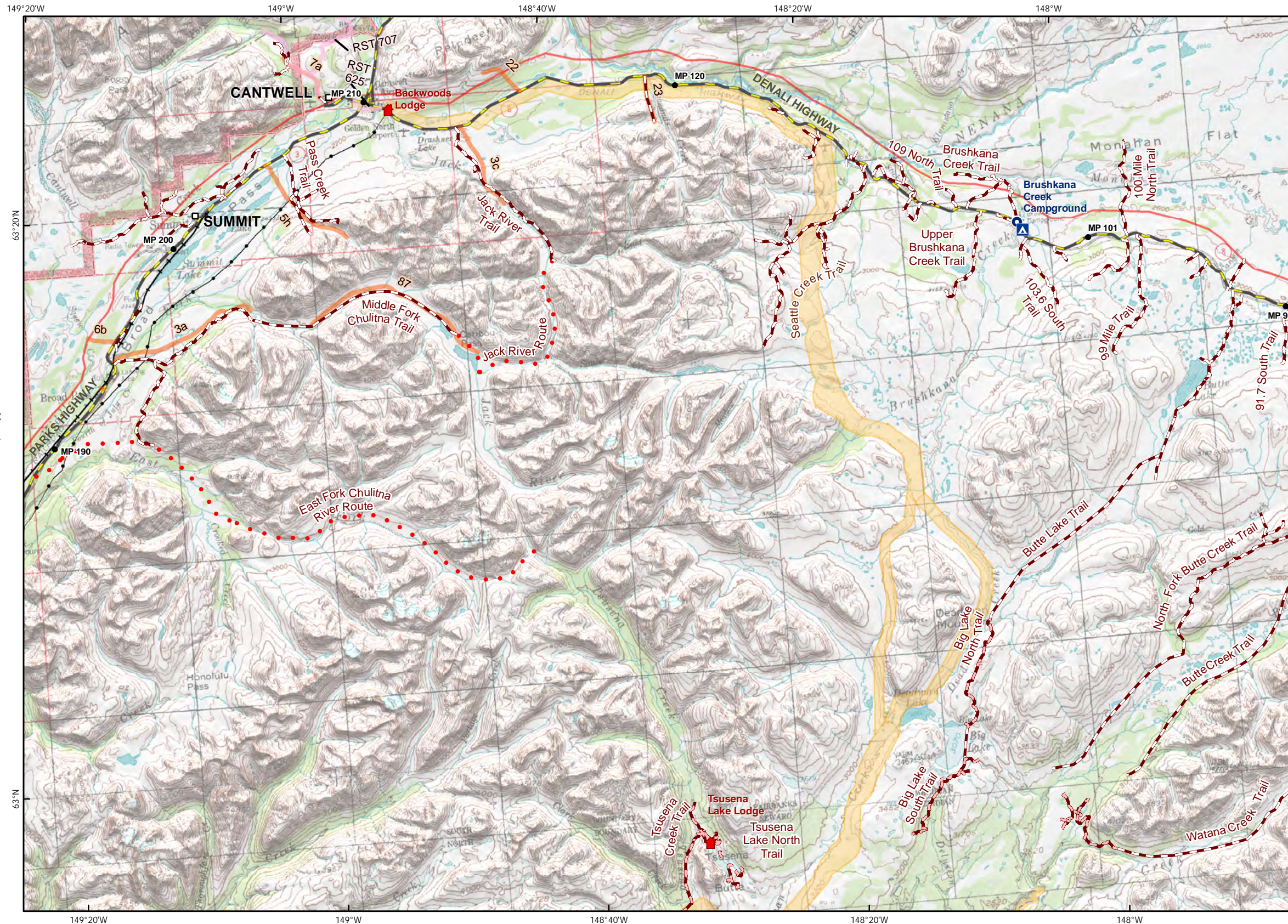
Disclaimer: Some map attributes may be located on private lands; this study report is not intended to suggest that the recreating public is authorized to access these lands for recreation purposes.

### Map 1



Projection: Alaska Albers NAD 1983  
 Date Created: 12/17/2013  
 Map Author: URS Alaska, Courtney Smith  
 File: Summer\_Trails\_ISR\_PG1.mxd





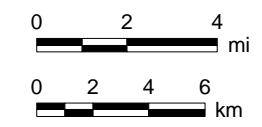
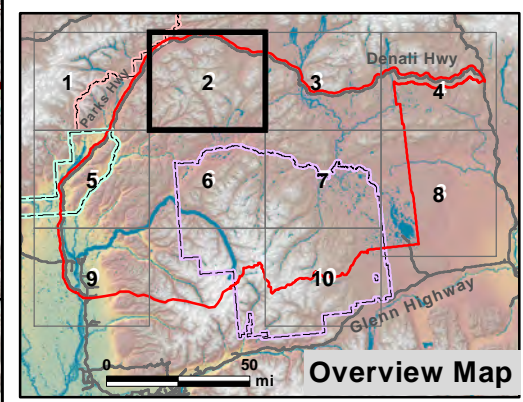
**Legend**

- Road Milepost
- Project River Miles
- Lodge
- Trailhead
- ▲ Facilities
- Proposed Watana Dam Site
- ~ Digitized Trails
- ~ Summer Trails Inventory
- Route
- ~ RS 2477
- ~ 17b Easements
- ~ Existing Intertie
- ~ Alaska Railroad
- ~ Roads
- ~ Proposed Watana Reservoir
- ~ Proposed Project Area
- ~ Denali State Park
- ~ Denali National Park & Preserve
- ~ Nelchina Public Use Area
- ~ Tangle Lakes Archaeological District
- ~ Delta National Wild Scenic and Recreational River
- ~ Gulkana National Wild River
- ~ Recreation Use Study Area

Data Sources: See Map References

Disclaimer: Some map attributes may be located on private lands; this study report is not intended to suggest that the recreating public is authorized to access these lands for recreation purposes.

**Map 2**



Projection: Alaska Albers NAD 1983  
 Date Created: 12/17/2013  
 Map Author: URS Alaska, Courtney Smith  
 File: Summer\_Trails\_ISR\_OtherPGs.mxd

Map 1

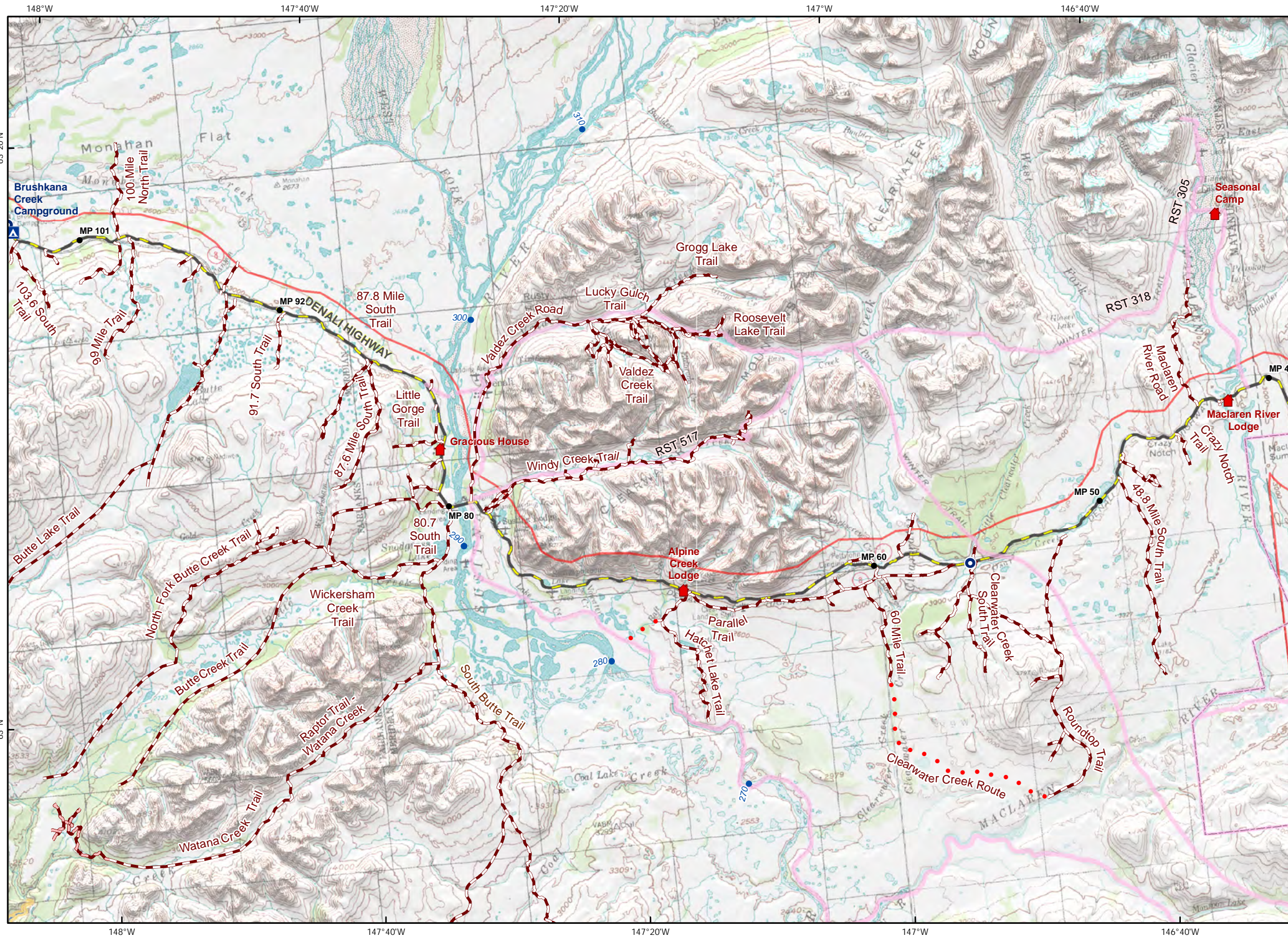
Map 3

Map 5

Map 6

Map 7





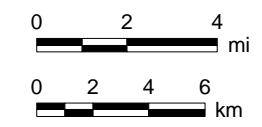
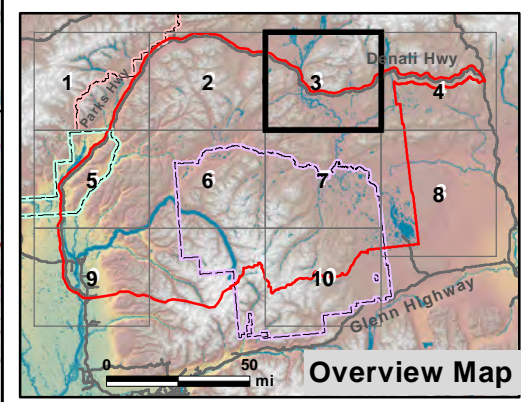
**Legend**

- Road Milepost
- Project River Miles
- 🏠 Lodge
- 📍 Trailhead
- 🏢 Facilities
- Proposed Watana Dam Site
- 👤 Digitized Trails
- 👤 Summer Trails Inventory
- Route
- 👤 RS 2477
- 👤 17b Easements
- 👤 Existing Intertie
- 👤 Alaska Railroad
- 👤 Roads
- 👤 Proposed Watana Reservoir
- 👤 Proposed Project Area
- 👤 Denali State Park
- 👤 Denali National Park & Preserve
- 👤 Nelchina Public Use Area
- 👤 Tangle Lakes Archaeological District
- 👤 Delta National Wild Scenic and Recreational River
- 👤 Gulkana National Wild River
- 👤 Recreation Use Study Area

Data Sources: See Map References

Disclaimer: Some map attributes may be located on private lands; this study report is not intended to suggest that the recreating public is authorized to access these lands for recreation purposes.

**Map 3**



Projection: Alaska Albers NAD 1983  
 Date Created: 12/17/2013  
 Map Author: URS Alaska, Courtney Smith  
 File: Summer\_Trails\_ISR\_OtherPGs.mxd

Map 2

Map 4

Map 6

Map 7

Map 8



146°40'W 146°20'W 146°W 145°40'W 145°20'W



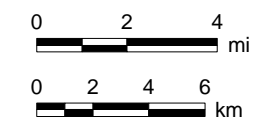
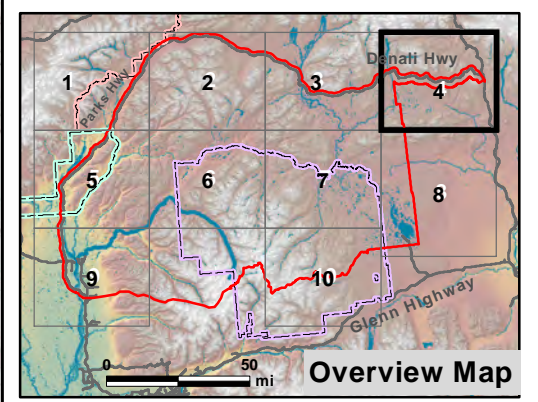
### Legend

- Road Milepost
- Project River Miles
- 🏠 Lodge
- 📍 Trailhead
- 🏠 Facilities
- Proposed Watana Dam Site
- 👤 Digitized Trails
- 👤 Summer Trails Inventory
- Route
- 👤 RS 2477
- 👤 17b Easements
- 👤 Existing Intertie
- 👤 Alaska Railroad
- 👤 Roads
- 👤 Proposed Watana Reservoir
- 👤 Proposed Project Area
- 👤 Denali State Park
- 👤 Denali National Park & Preserve
- 👤 Nelchina Public Use Area
- 👤 Tangle Lakes Archaeological District
- 👤 Delta National Wild Scenic and Recreational River
- 👤 Gulkana National Wild River
- 👤 Recreation Use Study Area

Data Sources: See Map References

Disclaimer: Some map attributes may be located on private lands; this study report is not intended to suggest that the recreating public is authorized to access these lands for recreation purposes.

### Map 4



Projection: Alaska Albers NAD 1983  
 Date Created: 12/17/2013  
 Map Author: URS Alaska, Courtney Smith  
 File: Summer\_Trails\_ISR\_OtherPGs.mxd

Map 3

Map N/A

Map 7

Map 8

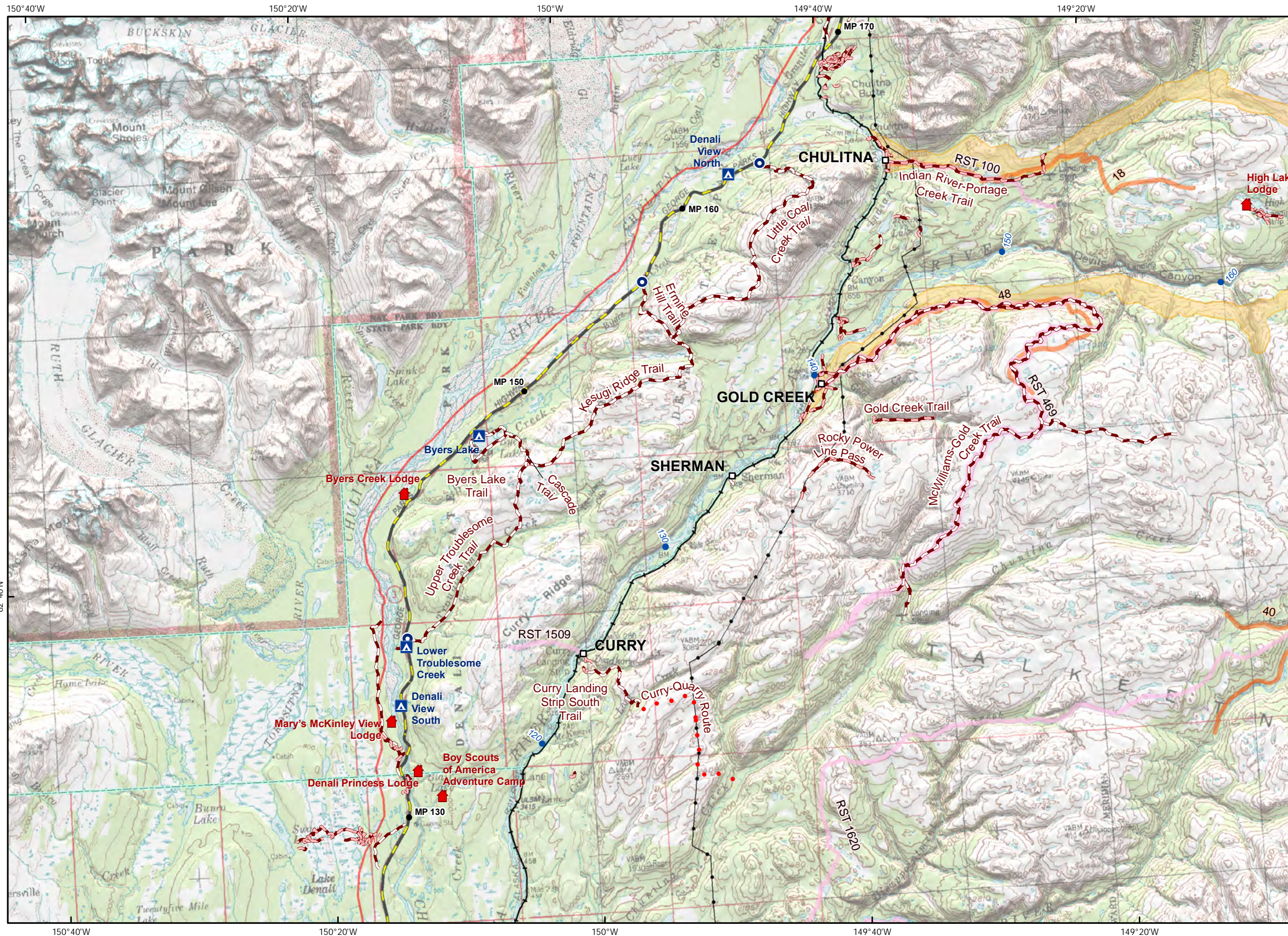
Map N/A



Map N/A

Map 1

Map 2



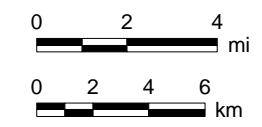
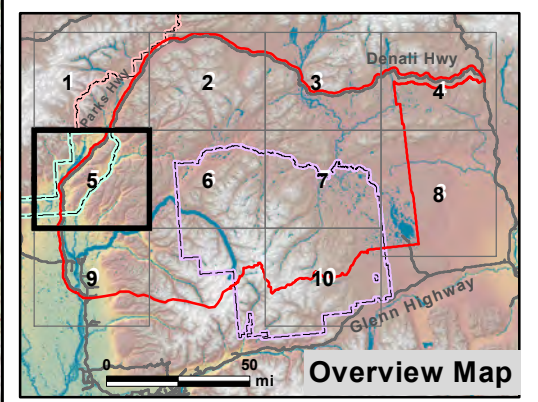
### Legend

- Road Milepost
- Project River Miles
- Lodge
- Trailhead
- ▲ Facilities
- Proposed Watana Dam Site
- Digitized Trails
- Summer Trails Inventory
- Route
- RS 2477
- 17b Easements
- Existing Intertie
- Alaska Railroad
- Roads
- Proposed Watana Reservoir
- Proposed Project Area
- Denali State Park
- Denali National Park & Preserve
- Nelchina Public Use Area
- Tangle Lakes Archaeological District
- Delta National Wild Scenic and Recreational River
- Gulkana National Wild River
- Recreation Use Study Area

Data Sources: See Map References

Disclaimer: Some map attributes may be located on private lands; this study report is not intended to suggest that the recreating public is authorized to access these lands for recreation purposes.

### Map 5



Projection: Alaska Albers NAD 1983  
 Date Created: 12/17/2013  
 Map Author: URS Alaska, Courtney Smith  
 File: Summer\_Trails\_ISR\_OtherPGs.mxd

Map N/A

Map N/A

Map N/A

Map 9

Map N/A



Map 1

Map 2

Map 3



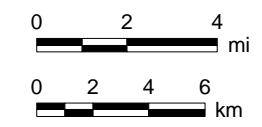
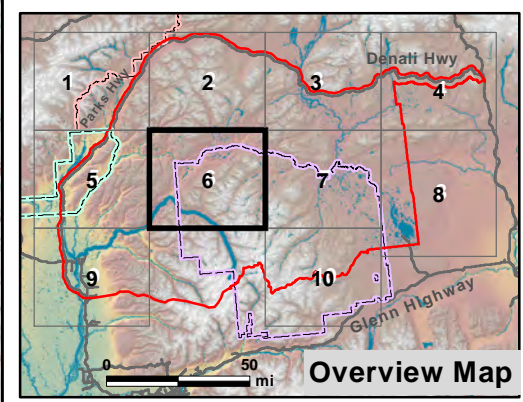
### Legend

- Road Milepost
- Project River Miles
- Lodge
- Trailhead
- ▲ Facilities
- Proposed Watana Dam Site
- Digitized Trails
- Summer Trails Inventory
- Route
- RS 2477
- 17b Easements
- Existing Intertie
- Alaska Railroad
- Roads
- Proposed Watana Reservoir
- Proposed Project Area
- Denali State Park
- Denali National Park & Preserve
- Nelchina Public Use Area
- Tangle Lakes Archaeological District
- Delta National Wild Scenic and Recreational River
- Gulkana National Wild River
- Recreation Use Study Area

Data Sources: See Map References

Disclaimer: Some map attributes may be located on private lands; this study report is not intended to suggest that the recreating public is authorized to access these lands for recreation purposes.

### Map 6



Projection: Alaska Albers NAD 1983  
 Date Created: 12/17/2013  
 Map Author: URS Alaska, Courtney Smith  
 File: Summer\_Trails\_ISR\_OtherPGs.mxd

Map 5

Map 7

Map 9

Map N/A

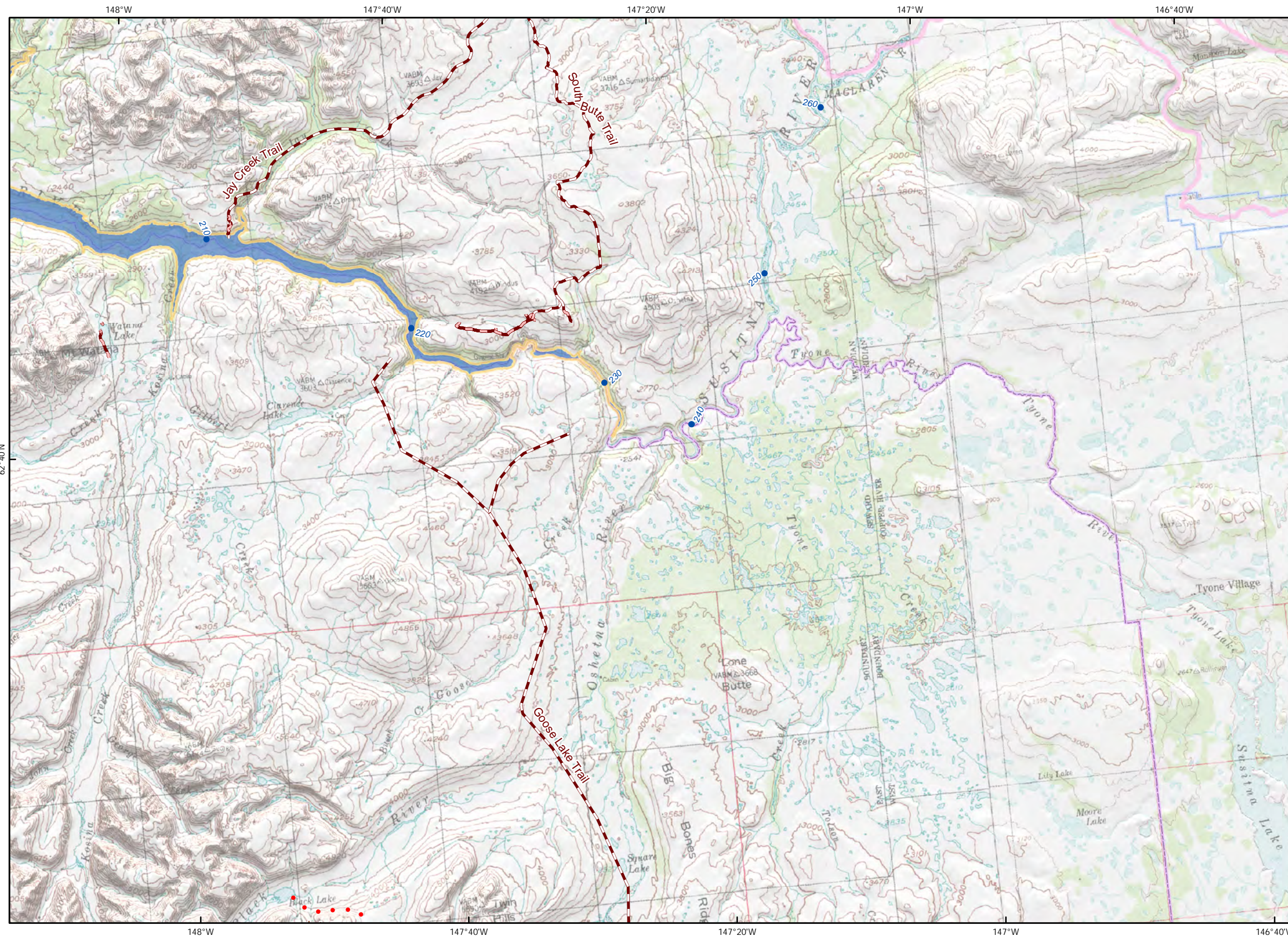
Map 10



Map 2

Map 3

Map 4



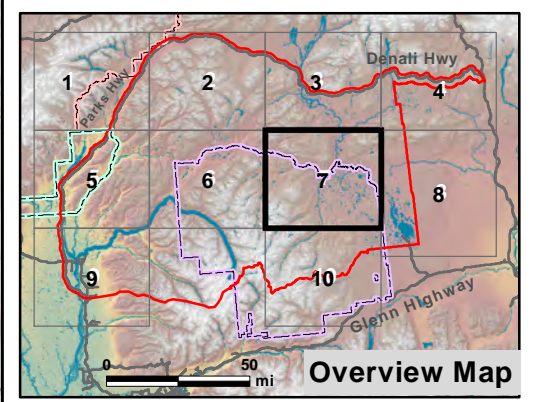
### Legend

- Road Milepost
- Project River Miles
- Lodge
- Trailhead
- ▲ Facilities
- Proposed Watana Dam Site
- Digitized Trails
- Summer Trails Inventory
- ● ● Route
- RS 2477
- 17b Easements
- Existing Intertie
- Alaska Railroad
- Roads
- Proposed Watana Reservoir
- Proposed Project Area
- Denali State Park
- Denali National Park & Preserve
- Nelchina Public Use Area
- Tangle Lakes Archaeological District
- Delta National Wild Scenic and Recreational River
- Gulkana National Wild River
- Recreation Use Study Area

Data Sources: See Map References

Disclaimer: Some map attributes may be located on private lands; this study report is not intended to suggest that the recreating public is authorized to access these lands for recreation purposes.

### Map 7



Projection: Alaska Albers NAD 1983  
 Date Created: 12/17/2013  
 Map Author: URS Alaska, Courtney Smith  
 File: Summer\_Trails\_ISR\_OtherPGs.mxd

Map 6

Map 8

Map N/A

Map 10

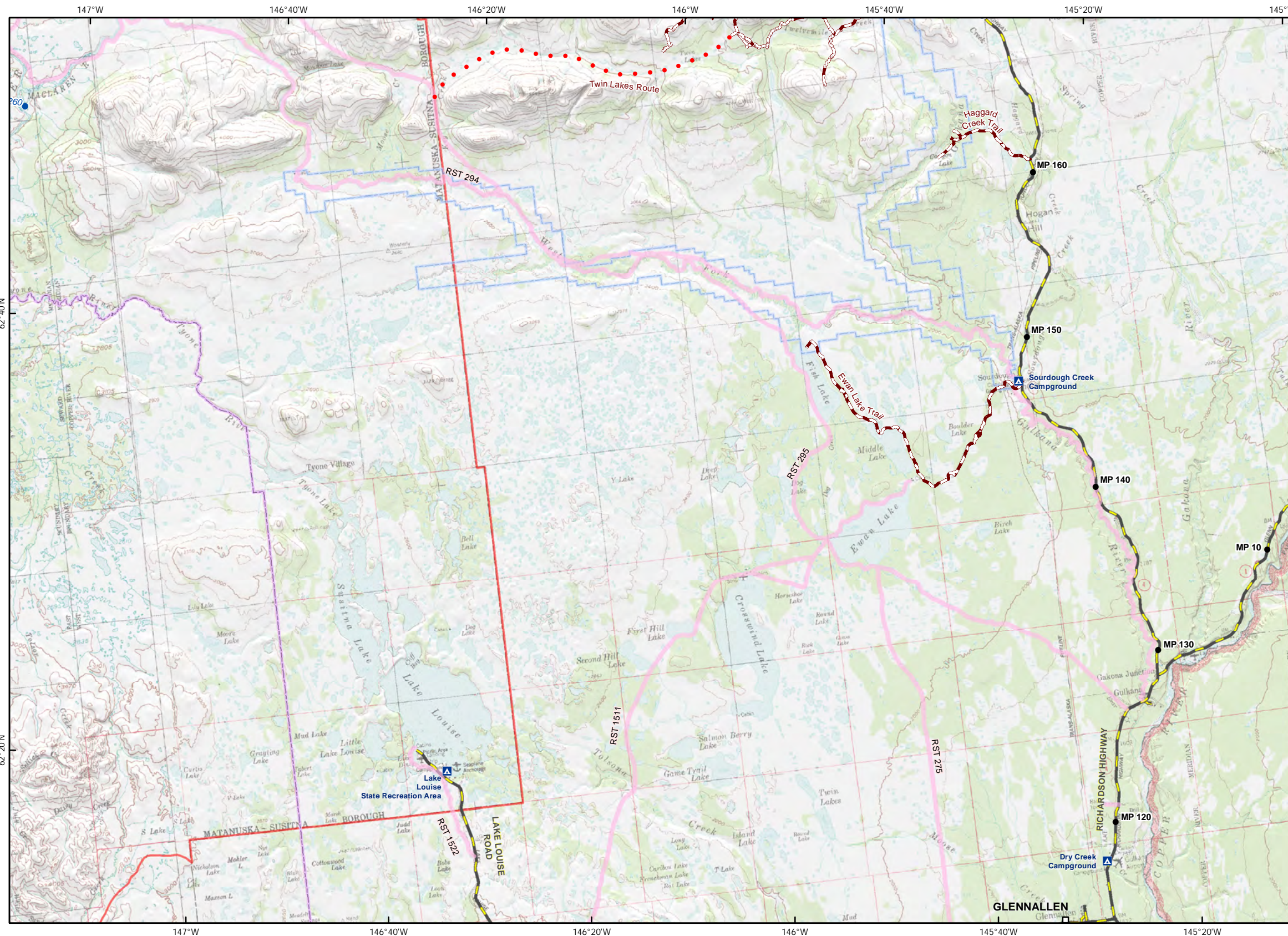
Map 8



Map 3

Map 4

Map N/A



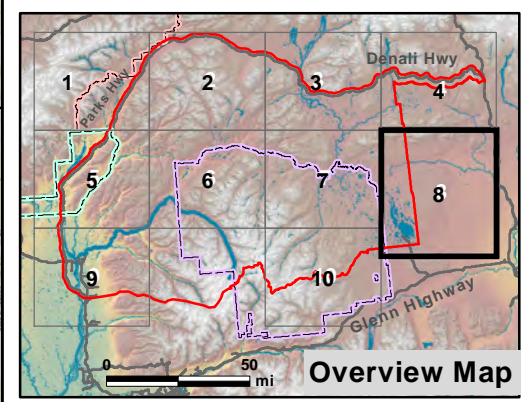
**Legend**

- Road Milepost
- Project River Miles
- 🏠 Lodge
- 📍 Trailhead
- 🏠 Facilities
- Proposed Watana Dam Site
- 👤 Digitized Trails
- 👤 Summer Trails Inventory
- Route
- 👤 RS 2477
- 👤 17b Easements
- 👤 Existing Intertie
- 👤 Alaska Railroad
- 👤 Roads
- 👤 Proposed Watana Reservoir
- 👤 Proposed Project Area
- 👤 Denali State Park
- 👤 Denali National Park & Preserve
- 👤 Nelchina Public Use Area
- 👤 Tangle Lakes Archaeological District
- 👤 Delta National Wild Scenic and Recreational River
- 👤 Gulkana National Wild River
- 👤 Recreation Use Study Area

Data Sources: See Map References

Disclaimer: Some map attributes may be located on private lands; this study report is not intended to suggest that the recreating public is authorized to access these lands for recreation purposes.

**Map 8**



Projection: Alaska Albers NAD 1983  
 Date Created: 12/17/2013  
 Map Author: URS Alaska, Courtney Smith  
 File: Summer\_Trails\_ISR\_OtherPGs.mxd

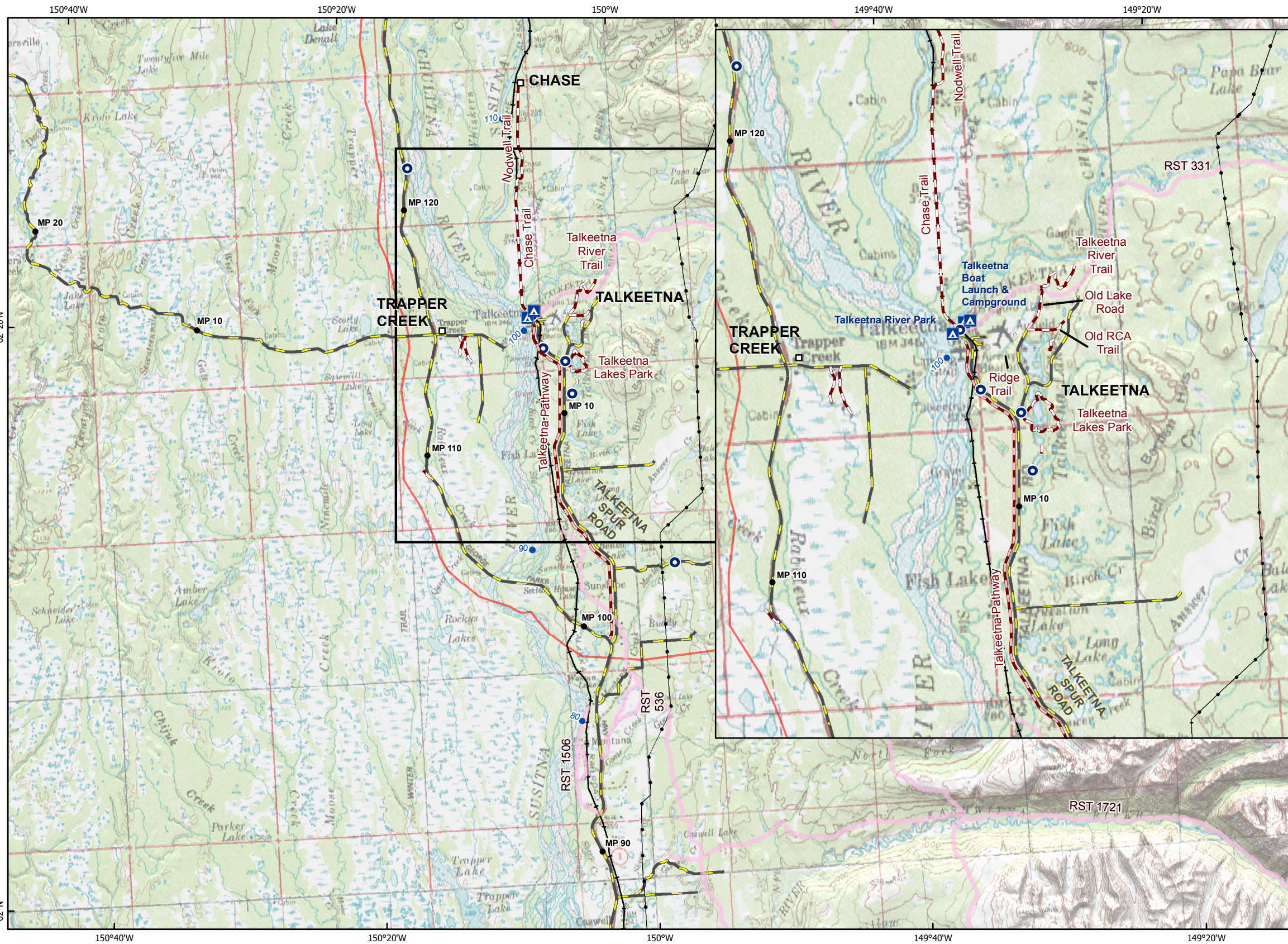
Map 7

Map 10

Map N/A

Map N/A





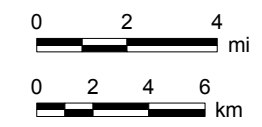
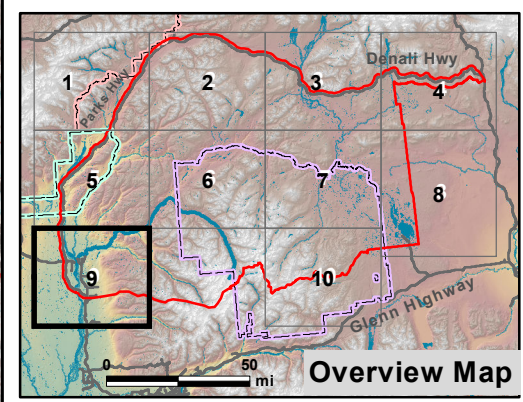
**Legend**

- Road Milepost
- Project River Miles
- Lodge
- Trailhead
- ▲ Campground
- Proposed Watana Dam Site
- Digitized Trails
- Summer Trails Inventory
- Route
- RS 2477
- 17b Easements
- Existing Intertie
- Alaska Railroad
- Roads
- Proposed Watana Reservoir
- Proposed Project Area
- Denali State Park
- Denali National Park & Preserve
- Nelchina Public Use Area
- Tangle Lakes Archaeological District
- Delta National Wild Scenic and Recreational River
- Gulkana National Wild River
- Recreation Use Study Area

Data Sources: See Map References

Disclaimer: Some map attributes may be located on private lands; this study report is not intended to suggest that the recreating public is authorized to access these lands for recreation purposes.

**Map 9**



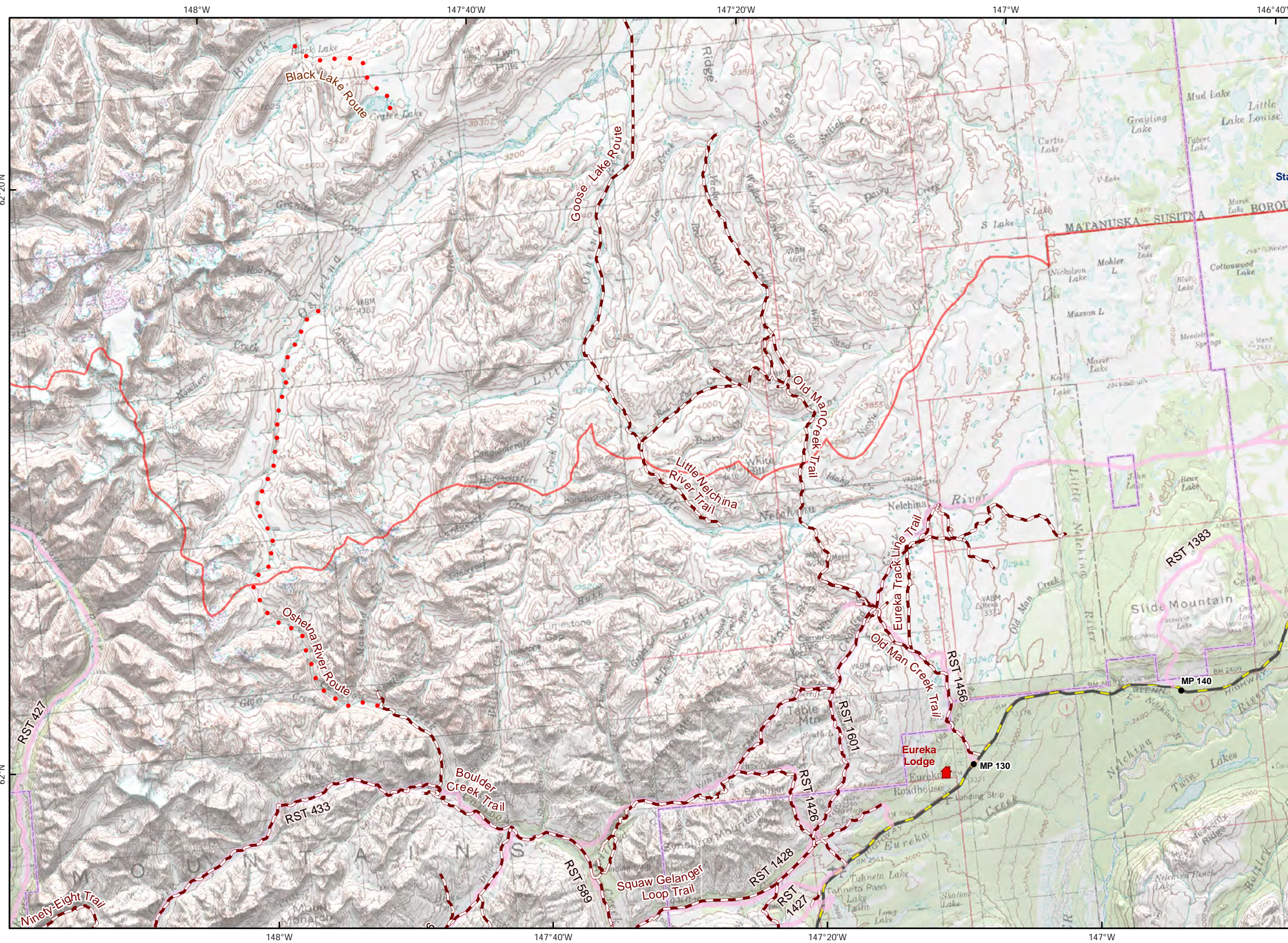
Projection: Alaska Albers NAD 1983  
 Date Created: 1/30/2014  
 Map Author: URS Alaska, Courtney Smith  
 File: URS\_ISR\_REC\_12.5\_Appendix\_D\_Pg9.mxd



Map 6

Map 7

Map 8



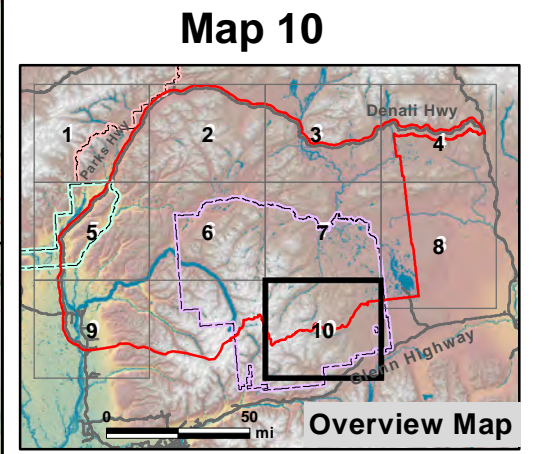
**ALASKA ENERGY AUTHORITY**

**Legend**

- Road Milepost
- Project River Miles
- Lodge
- Trailhead
- ▲ Facilities
- Proposed Watana Dam Site
- ~ Digitized Trails
- ~ Summer Trails Inventory
- Route
- ~ RS 2477
- ~ 17b Easements
- ~ Existing Intertie
- ~ Alaska Railroad
- ~ Roads
- ~ Proposed Watana Reservoir
- ~ Proposed Project Area
- ~ Denali State Park
- ~ Denali National Park & Preserve
- ~ Nelchina Public Use Area
- ~ Tangle Lakes Archaeological District
- ~ Delta National Wild Scenic and Recreational River
- ~ Gulkana National Wild River
- ~ Recreation Use Study Area

**Map 8** Data Sources: See Map References

Disclaimer: Some map attributes may be located on private lands; this study report is not intended to suggest that the recreating public is authorized to access these lands for recreation purposes.



0 2 4 mi

0 2 4 6 km

Projection: Alaska Albers NAD 1983  
 Date Created: 12/17/2013  
 Map Author: URS Alaska, Courtney Smith  
 File: Summer\_Trails\_ISR\_OtherPGs.mxd

Map N/A

Map N/A

Map N/A



**Map References:**

<b>Data Source</b>	<b>Date</b>	<b>File Name and Description</b>
URS Corporation	11/18/2013	REC_Facilities: Recreation facilities including campgrounds, trailheads, boat launches, and day use areas.
URS Corporation	11/19/2013	REC_RS2477: Easements with a State of Alaska RS 2477 designation.
URS Corporation	6/4/013	REC_17b_Easements: Easements with an ANCSA 17(b) designation.
URS Corporation	11/20/2013	REC_Summer_Trails: Trail compilation for the Study Area. From URS digitized trails, ADNRS USGS 63,360 Trailset, BLM trails, MSB trails, and executive interviews.
URS Corporation	11/22/2013	REC_Summer_Trails_Index: Summer trails figure map index for ESRI Data Driven Pages.
URS Corporation	6/4/2013	REC_StudyArea_Use: The spatial extent of the study area for both Recreation Use Studies and the Recreation Supply and Demand Studies
URS Corporation	11/20/2013	REC_Existing_Intertie: Route of the Alaska Intertie that travels through the study area.
URS Corporation	11/22/2013	REC_Cabins: Locations of cabins and lodges in the Study Area.
BLM	10\28\2013	BLM_TLAD: Boundary of the Tangle Lakes Archaeological District.
BLM	5/24/2005	BLM_WSRP: Corridors representing rivers of Wild and Scenic Designation.



**Susitna-Watana Hydroelectric Project  
(FERC No. 14241)**

**Recreation Resources Study (12.5)**

**Part A - Appendix E  
ADF&G Fish Harvest Data**

**Initial Study Report**

Prepared for

Alaska Energy Authority



**SUSITNA-WATANA HYDRO**

*Clean, reliable energy for the next 100 years.*

Prepared by

URS Corporation

June 2014



Table E-1. ADF&G SWHS estimates, standard errors and 95% confidence intervals for the average annual fish catch (kept and released) on the six most actively fished stream segments in the Recreation Use Study Area (2003-2012)

	TYPE	ADFG Survey Responses	Number of anglers (not additive)	Angler days fished	Chinook	Coho	Sockeye	Pink	Chum	Rainbow	Dolly Varden/ Arctic Char	Laketrout	Grayling	Pike	Whitefish	Burbot	Other fish
<b>Chunilna Creek (Clear Creek)</b>	Average Estimate	111	3013	6033	3235	3366	911	3028	4577	3746	2345	3	847	—	112	1	3
	Average Std. Error (+/-)			1111	844	1053	387	1023	1360	1379	1043	2	420	—	75	1	3
<b>Fish Creek (Denali Highway near Cantwell)</b>	Average Estimate	12	325	849	—	—	—	—	—	—	45	—	1998	—	—	—	—
	Average Std. Error (+/-)			485	—	—	—	—	—	—	40	—	806	—	—	—	—
<b>Lake Louise (off Glenn Highway)</b>	Average Estimate	42	1357	4258	—	—	—	—	—	—	—	2681	1386	9	404	743	202
	Average Std. Error (+/-)			1180	—	—	—	—	—	—	—	842	794	9	260	385	204
<b>Sunshine Creek</b>	Average Estimate	45	1407	2792	193	2969	82	467	228	184	15	—	—	—	102	120	—
	Average Std. Error (+/-)			598	103	821	56	229	118	120	12	—	—	—	90	85	—
<b>Talkeetna River</b>	Average Estimate	154	4316	8514	2899	4761	2627	3101	3941	2643	3185	—	925	—	85	88	93
	Average Std. Error (+/-)			1459	673	1204	880	1478	1261	843	1116	—	440	—	57	79	94
<b>Tangle Lakes and Tangle River</b>	Average Estimate	73	2326	4337	—	—	—	—	—	—	—	1410	20358	—	147	16	31
	Average Std. Error (+/-)			767	—	—	—	—	—	—	—	524	5352	—	118	13	28

Note: Some locations may be on private lands; this study report is not intended to suggest that the recreating public is authorized to access these lands for recreation purposes.

1. Use of Estimates: The following guidelines (Mills and Howe 1992) provide a basis for evaluating the utility of statewide survey estimates: Estimates based on 30 or more responses were used due to their confidence
2. Zero values for landlocked coho, kokanee, steelhead, brook trout, smelt, cutthroat, and sheefish are not shown



Table E-2. ADF&G SWHS estimates, standard errors and 95% confidence intervals for the average annual fish catch (kept and released) in the Recreation Use Study Area (2003-2012)

year	Area	TYPE	Total Responses	Number of anglers (not additive)	Angler days fished	Estimate for the Average Annual Fish Catch (Kept and Released)														
						Chinook	Coho	Sockeye	Pink	Chum	Landlocked coho, kings	Rainbow	Smelt	Dolly Varden/ Arctic Char	Laketrout	Grayling	Pike	Whitefish	Burbot	Other fish
2003	Study Area	Estimate	1,302	27,026	67,110	16,925	24,517	6,244	20,842	34,539	—	30,000	—	15,144	5,950	38,053	—	2,338	1,662	255
2003	Study Area	Std. Error (+/-)			3,752	1,736	2,645	963	3,111	4,557	—	4,811	—	2,865	1,122	5,638	—	1,088	491	185
2004	Study Area	Estimate	1,218	26,587	68,872	15,410	26,768	6,336	41,475	21,519	—	26,650	7,760	8,632	6,937	29,716	1,432	924	1,045	1,808
2004	Study Area	Std. Error (+/-)			4,416	1,591	2,574	1,100	7,216	2,342	—	2,713	4,519	1,624	1,479	4,918	1,270	268	296	1,699
2005	Study Area	Estimate	1,065	24,023	57,475	13,134	20,296	3,538	20,814	20,598	306	17,730	1,089	6,481	7,261	33,637	1,291	2,317	1,225	3,765
2005	Study Area	Std. Error (+/-)			3,302	1,340	2,460	776	3,219	3,188	231	2,492	1,057	1,326	1,483	4,947	553	752	415	3,284
2006	Study Area	Estimate	1,012	23,276	57,100	15,637	26,351	2,713	25,840	19,472	33	21,876	790	9,817	3,547	23,614	219	903	1,271	845
2006	Study Area	Std. Error (+/-)			3,778	1,850	2,505	636	4,043	2,739	26	3,342	744	3,191	660	3,541	230	329	317	687
2007	Study Area	Estimate	1,017	25,346	65,029	17,329	16,963	3,440	11,166	13,198	100	35,852	620	6,638	5,146	34,775	150	435	1,127	65
2007	Study Area	Std. Error (+/-)			4,463	3,562	1,848	651	1,502	2,106	100	7,038	622	1,286	919	8,492	104	118	353	48
2008	Study Area	Estimate	985	24,136	60,929	11,571	30,064	5,594	12,283	14,832	—	24,131	737	6,925	5,722	41,798	—	1,629	1,839	116
2008	Study Area	Std. Error (+/-)			3,124	1,629	3,075	1,393	2,054	2,045	—	3,174	746	1,555	1,327	7,442	—	621	479	68
2009	Study Area	Estimate	990	23,320	62,025	8,611	16,502	13,663	32,497	16,627	3,168	18,734	3,520	5,575	8,010	49,015	169	1,131	1,267	59
2009	Study Area	Std. Error (+/-)			3,987	1,749	1,757	2,303	4,391	2,529	3,217	2,989	3,396	1,511	1,832	8,801	123	487	358	59
2010	Study Area	Estimate	875	22,169	56,764	5,714	20,344	6,579	18,643	18,846	784	19,834	4,446	5,101	10,713	51,756	51	1,758	4,235	189
2010	Study Area	Std. Error (+/-)			4,082	861	4,244	1,570	4,856	3,842	699	3,385	2,810	975	2,643	8,417	49	564	2,086	96
2011	Study Area	Estimate	753	20,667	48,132	6,414	12,461	5,232	10,757	18,264	469	25,791	6,763	5,254	4,162	37,060	41	274	1,010	—
2011	Study Area	Std. Error (+/-)			3,646	1,073	2,059	1,127	1,821	2,619	326	4,419	5,273	1,865	978	5,605	41	106	316	—
2012	Study Area	Estimate	652	18,399	49,235	1,591	10,867	7,541	14,677	27,175	105	16,303	—	4,091	4,049	39,046	—	327	995	537
2012	Study Area	Std. Error (+/-)			3,674	486	1,894	2,486	2,369	3,251	104	2,700	—	1,328	1,063	5,658	—	120	383	391
Average	Study Area	Estimate	987	23,495	59,267	11,234	20,513	6,088	20,899	20,507	497	23,690	2,573	7,366	6,150	37,847	335	1,204	1,568	764

1. Use of Estimates: The following guidelines (Mills and Howe 1992) provide a basis for evaluating the utility of statewide survey estimates:  
 2. Zero values for kokanee, steelhead, brook trout, smelt, cutthroat, and sheefish are not shown



**Susitna-Watana Hydroelectric Project  
(FERC No. 14241)**

**Recreation Resources Study (12.5)**

**Part A - Appendix F  
Facility Inventory**

**Initial Study Report**

Prepared for

Alaska Energy Authority



**SUSITNA-WATANA HYDRO**

*Clean, reliable energy for the next 100 years.*

Prepared by

URS Corporation

June 2014



## 1. REGIONAL FACILITY DESCRIPTIONS

In this appendix, facilities are organized geographically. Facilities are ordered as though driving clockwise around the Recreation Facilities Study Area starting at the southern end of the Parks Highway, presented in this order: Parks Highway (south to north), Talkeetna Spur Road (south to north), Alaska Railroad, Denali Highway (west to east), Richardson Highway (north to south), Lake Louise Road (south to north), Glenn Highway (east to west). Some facilities may be located on private lands; this study report is not intended to suggest that the recreating public is authorized to access these lands for recreation purposes.

### **Parks Highway**

#### **East-West Express Trailhead**

East-West Express Trailhead is located at milepost 121.5 on the Parks Highway. This trailhead provides access to East-West Express and Chulitna Bluffs winter trails (Table F-5). There is a trail map posted at the start of the East-West Express Trail. The trailhead offers scenic views of the Chulitna River. When inventoried, there was an outhouse near the parking area (Table F-1).

#### **Denali View South**

Located in Denali State Park at milepost 134.8 on the Parks Highway, Denali View South is an ADNR-managed facility that includes a campground and day use area that offers scenic views of Denali. There are 10 campsites (\$10/vehicle), 10 picnic tables (for both overnight and day use), four benches, and eight interpretive signs (Table F-3, Table F-4). There is an 800 foot walkway to an overlook point. This facility has trash receptacles, four vault toilets, and drinking water. Denali View South is in good condition and is well maintained (Table F-1).

#### **Lower Troublesome Creek**

Lower Troublesome Creek is an ADNR-managed campground, trailhead, and day use area in Denali State Park. It is located at milepost 137.2 on the Parks Highway. There are 11 campsites (\$10/vehicle), nine camp tables, and a bear box (Table F-3). The day use parking fee is \$5 and there are three picnic tables, one pavilion, and two interpretive displays (Table F-4). The Chulitna Confluence Trail originates at this facility (Table F-5). Lower Troublesome Creek is equipped with drinking water, two trash receptacles, and two vault toilets. The facility is in need of minor repair and is poorly maintained (Table F-1).

#### **Upper Troublesome Creek**

Upper Troublesome Creek is a trailhead within Denali State Park, located at Parks Highway milepost 137.7. In the summer 2013, the Upper Troublesome Creek Trail was closed due to flood damage. Prior to this closure, Upper Troublesome Creek Trail provided access to the popular Kesugi Ridge Trail (Table F-5). There is an overnight parking fee of \$5 at this ADNR-managed trailhead. At the time of inventory, the drinking water well was out of order. The trailhead facility is in good condition, is well maintained, and has a trash receptacle and two vault toilets (Table F-1).



## **Byers Lake**

At milepost 147 on the Parks Highway, Byers Lake is a Denali State Park facility adjacent to the Park's largest lake (photograph in Appendix K). The Byers Lake facility is managed by ADNR and includes a day use area, boat launch, trailhead, campground, and three public cabins. There is a \$5 day use parking fee for use of the facility, which includes nine picnic tables and six interpretive displays (Table F-4). A gravel boat launch provides access to Byers Lake for non-gas-powered boats. Also at the launch site is a floating dock and life jackets provided through the "Kids Don't Float" program (Table F-2). Canoe and kayak rentals are available through Denali Southside River Guides, a private contractor (ADNR 2013c). The Byers Lake Loop Trail originates at the facility's trailhead and encircles the lake. This trail provides access to the Cascade Trail, which connects to the popular Kesugi Ridge and Upper Troublesome Creek trails (Table F-5). The campground has a camp host; 61 campsites (\$10/site), each with a table; two bear boxes; and an RV dump station (\$5 fee). Firewood is available for purchase (Table F-3). Additional walk-in campsites are located 1.8 miles down the Byers Lake Loop Trail (ADNR 2013d). The Byers Lake public-use cabins each sleep a maximum of six people and cost \$60 peak / \$45 non-peak per night (ADNR 2013e). The Byers Lake facility has drinking water, six vault toilets, and 15 trash receptacles. The facility is in good condition and is well maintained (Table F-1).

## **Alaska Veterans Memorial & Visitor Center**

Alaska Veterans Memorial & Visitor Center (photograph in Appendix K) is located in Denali State Park at Parks Highway milepost 147.1. This is an ADNR-managed day use facility with a memorial honoring Alaskan veterans. There is a site host at the facility as well as a visitor center and bookstore that is operated by Friends of State Parks, Mat-Su, a non-profit organization (ADN 2013). The site provides a scenic view of Denali and a viewing scope is available at the facility. There are eight picnic tables, eight benches, and 14 interpretive displays at the site (Table F-4). Alaska Veterans Memorial & Visitor Center has eight trash receptacles, eight vault toilets, and drinking water. The facility is well maintained and in good condition (Table F-1).

## **Ermine Hill Trailhead**

Ermine Hill Trailhead is part of Denali State Park and is located at milepost 156.5 on the Parks Highway. This facility, managed by ANDR, consists of a trailhead sign and a gravel parking lot. It is the start of Ermine Hill Trail, which provides access to Kesugi Ridge Trail (Table F-5).

## **Denali Viewpoint**

Denali Viewpoint is a paved pullout with a viewpoint sign at milepost 162.4 on the Parks Highway. As its name suggests, this facility offers scenic views of Denali and the Alaska Range. This facility is managed by ADNR and is part of Denali State Park. This site is in good condition and has been well maintained (Table F-1).

## **Denali View North**

Located in Denali State Park at Parks Highway milepost 162.7, Denali View North (photograph in Appendix K) is an ADNR-managed campground and day use area and offers scenic views of



Denali and the Alaska Range. This facility has four benches, 10 interpretive displays, a native plant walk, and a viewing scope (Table F-4). There are 14 campsites with tables (\$10/vehicle) at the campground as well as a camp host (Table F-3). Denali View North has nine trash receptacles and four vault toilets. When inventoried, drinking water was not available due to an out-of-order well pump. The facility is well maintained but in need of minor repair (Table F-1).

### **Little Coal Creek Trailhead**

Little Coal Creek Trailhead is an ADNR-managed facility in Denali State Park at Parks Highway milepost 163.9. There is a \$5 parking fee and the trailhead has two trash receptacles and two vault toilets. It is the starting point for the Little Coal Creek Trail, which adjoins Kesugi Ridge Trail above tree line (Table F-5). According to ADNR (2013d; 2013f) Little Coal Creek Trailhead provides access to the alpine and Kesugi Ridge Trail. The trailhead facility is well maintained and in good condition (Table F-1).

### **Hurricane Gulch Parking Area**

Hurricane Gulch Parking Area is a paved lot off the Parks Highway at milepost 174.5 on the north side of Hurricane Gulch Bridge. This facility is a viewpoint for Hurricane Gulch and the bridge. The site is well maintained and in good condition (Table F-1).

### **East Fork Chulitna Wayside and East Fork Chulitna Campground**

East Fork Chulitna Wayside and East Fork Chulitna Campground are adjacent facilities at milepost 185.6 on the Parks Highway. The wayside has two trash receptacles and two vault toilets. The campground has three trash receptacles, two vault toilets, 11 campsites, 13 tables, and a pavilion (Table F-3). There is no drinking water at either facility. Both facilities are well maintained and in good condition (Table F-1).

### **Talkeetna Spur Road and Talkeetna**

#### **Luthman Trailhead**

Luthman Trailhead is located on Yoder Road off the Talkeetna Spur Road (mile 3.1). This trailhead provides access to Luthman Trail (Table F-5) and Montana Creek Falls.

#### **Tigger Lake Trailhead**

Located on Whigmi Road off of Talkeetna Spur Road at mile 10.8, Tigger Lake Trailhead provides access to Tigger Lake Trail and the Talkeetna Lakes Trail System (Table F-5). This facility is managed by MSB.

#### **Talkeetna Lakes Park**

Talkeetna Lakes Park is an MSB-managed facility located on Comsat Road off Talkeetna Spur Road at mile 12. Talkeetna Lakes Park is a trailhead for the Talkeetna Lakes Trail System (Table F-5). There is a trash receptacle and a vault toilet at the trailhead. The facility is in good condition and is well maintained (Table F-1).



### **Christiansen Lake Park**

Christiansen Lake Park (photograph in Appendix K) is an MSB-managed day use facility with a gravel launch site for paddle craft and other carry-in boats (Table F-2). The park is located on Christiansen Lake Road off Comsat Road. There are nine picnic tables, two pavilions, and a swimming beach at the park (Table F-4). Christiansen Lake Park has a trash receptacle and a vault toilet. The facility is well maintained and in good condition (Table F-1).

### **Talkeetna Denali Viewpoint**

Talkeetna Denali Viewpoint is a paved turnout at mile 12.9 of Talkeetna Spur Road. This facility offers an excellent view of Denali, Mt. Foraker, and the Alaska Range. The parking area is adjacent to the Talkeetna Spur Road Bike Path. The Talkeetna Denali Viewpoint facility is well maintained and in good condition (Table F-1).

### **Talkeetna Boat Launch & Campground**

Talkeetna Boat Launch & Campground is on F Street in Talkeetna. This facility comprises a boat launch owned by ADF&G and an adjacent, private campground/day use area managed by Talkeetna RV. The ADF&G boat launch is contract-managed by Talkeetna RV. The boat launch is paved with pre-cast concrete planks and carries a fee of \$20 (Table F-2). The campground has 26 campsites (\$20/site), 26 tables, and a variety of amenities provided by Talkeetna RV (Table 5.6-3). The day use area has 35 picnic tables, three picnic shelters, a convenience/tackle store, and a \$6 parking fee (Table F-4). There are five dumpsters and two vault toilets at this facility. The campground and day use area are well maintained and in good condition. (Table F-1).

### **Village Park**

Located in downtown Talkeetna, Village Park is a day use area that has benches, three picnic tables, and a band shell (Table F-4). There are two vault toilets and two trash receptacles at the park. Parking is available on the street or at the nearby Chase Trailhead. Village Park has been well maintained and is in good condition (Table F-1).

### **Chase Trailhead**

The Chase Trail originates at a gravel parking area at the end of Talkeetna Spur Road. The parking area has a \$3 fee (Table F-5).

### **Talkeetna River Park**

Talkeetna River Park is an MSB-managed campground at the end of Main Street in downtown Talkeetna. There are 10 campsites (\$10/site) and 10 tables (Table F-3). RVs are not permitted at this facility and each campsite is limited to six people and two tents (MSB 2013). Talkeetna River Park has two trash receptacles and two flushing toilets. The facility is well maintained and in good condition (Table F-1).



## **Alaska Railroad**

### **Curry Interpretive Walk**

The Curry Interpretive Walk is located on property owned by the Alaska Railroad at the former town site of Curry at railmile 248.5. It can be accessed via the Alaska Railroad's Hurricane Turn, a flag stop train that services the rail corridor between Talkeetna and Hurricane Gulch. There is a short interpretive loop here with four interpretive displays and five blank panels that may hold interpretive displays in the future. The interpretation is about the rise and fall of the historic railroad town that once existed at the site. There is also a bench, a screened pavilion, and also old train cars on display (Table F-4). The site is poorly maintained and in need of minor repair (Table F-1).

## **Denali Highway**

### **Nenana River Boat Launch**

The Nenana River Boat Launch is a gravel boat launch located at milepost 118.9 on the Denali Highway (Table F-2) that provides access to the Nenana River. ADNR and USCG installed a large sign at the site to inform Nenana River users of hazards and restrictions (Table F-1).

### **Denali Highway Orientation Turnout**

Denali Highway Orientation Turnout consists of a gravel pullout with a BLM-installed interpretive sign (Table F-4) at milepost 116.6. This site offers a scenic view of Nenana River but some of the brush needs to be trimmed to improve the view. The facility is poorly maintained and in need of minor repair (Table F-1).

### **Brushkana Creek Campground**

Brushkana Creek Campground is located at milepost 105.2 on the Denali Highway. This facility is managed by BLM and includes a campground (photograph in Appendix K), day use area, and trailhead. The campground has a camp host, 22 campsites (\$12/site), and 22 tables (Table F-3). Day use structures at this facility include a bench, a pavilion, and an interpretive display (Table F-4). Brushkana Creek Trail originates at this facility (Table F-5). The Brushkana Creek Campground facility has drinking water, recycling bins, 20 trash receptacles, and six vault toilets. The facility is well maintained but in need of some minor repair (Table F-1).

### **Alaska Range Interpretive Site**

The Alaska Range Interpretive Site is located on a short distance off Denali Highway at milepost 95. This facility is a scenic viewpoint for the Monahan Flats and the Alaska Range. There is a BLM-installed geologic interpretive display with labeled Alaska Range peaks (Table F-4).

### **Clearwater Creek Wayside**

Clearwater Creek Wayside is a BLM-managed day use area and trailhead at Denali Highway milepost 56. This is the starting point for the Clearwater Creek Trail (Table F-5). There is a trail



information sign and brochures on site. There are also two picnic tables, an interpretive sign (Table F-4), and two vault toilets at the facility. It is well maintained, but needs minor repair (Table F-1).

### **Maclaren Summit Trailhead and Osar Lake Trailhead**

Maclaren Summit Trailhead is located on the north side of Denali Highway at milepost 36.8, across from Osar Lake Trailhead. Parking for both of these facilities is on the south side of the highway, adjacent to Osar Lake Trailhead. The Maclaren Summit Trailhead is managed by ADNR while the Osar Lake Trailhead is managed by BLM. Maclaren Summit Trail heads north from Maclaren Summit Trailhead. Osar Lake Trail goes south from the Osar Lake Trailhead to Osar Lake (Table F-5). Both trailheads have signage with a map and trail information (Table F-1).

### **Glacier Gap Lake to Sevenmile Lake Trailhead**

Glacier Gap Lake to Sevenmile Lake Trailhead (photograph in Appendix K) is the starting point for a trail of the same name (Table F-5). The trailhead is located at Denali Highway milepost 30.6. There is signage at the trailhead with trail information and a map (Table F-1).

### **Landmark Gap South Trailhead**

Landmark Gap South Trailhead is a BLM-managed facility at milepost 24.8 on the Denali Highway. Parking for the facility is a double ended gravel turnout west of the trailhead and south of the highway. This facility serves the Landmark Gap South Trail (Table F-5).

### **Landmark Gap Lake Trailhead**

Landmark Gap Trail starts at Landmark Gap Lake Trailhead located at milepost 24.6 on the Denali Highway (Table F-5). This facility is managed by ADNR and has signage with trail information and a map (Table F-1).

### **Delta National Wild & Scenic River Wayside**

Delta National Wild & Scenic River Wayside is a BLM-managed facility that is comprised of a boat launch and day use area. It is located at Denali Highway milepost 21.7. The busiest time of year at this facility is the 4<sup>th</sup> of July (BLM 2011a). The boat launch serves motorized and non-motorized boats on Upper Tangle Lakes and upper Tangle River. It is paved with pre-cast concrete planks. Life jackets are provided through the “Kids Don’t Float” program (Table F-2). There are six picnic tables and two interpretive displays in the day use area (Table F-4). The facility has drinking water, a recycling bin, eight trash receptacles, and two vault toilets. Delta National Wild & Scenic River Wayside is well maintained but in need of minor repairs (Table F-1).

### **Tangle Lakes Campground**

Tangle Lakes Campground is a BLM-managed facility located at milepost 21.5 on the Denali Highway. In addition to a campground, this facility includes a gravel boat launch, day use area,



and trailhead. The busiest time of year for this facility is the 4<sup>th</sup> of July (BLM 2011a). Life jackets are provided next to the boat launch through the “Kids Don’t Float” program (Table F-2; photograph in Appendix K). The boat launch provides access to motorized and non-motorized boats for Lower Tangle Lakes and Delta River traveling downstream (BLM 2011a). The campground has a camp host, firewood for purchase, one bear box, 46 campsites, and 46 tables. Walk-in campsites cost \$6 per night; all others cost \$12 per night (Table F-3). There are three picnic tables and three interpretive displays at the Tangle Lakes Campground day use area (Table F-4). Tangle Ridge Trail and Lake Overlook Trail both originate at this facility (Table F-5). Tangle Lakes Campground has drinking water, recycling bins, 32 trash receptacles, and eight vault toilets. The facility is well maintained and in good condition (Table F-1).

### **Rusty Lake Trailhead**

Rusty Lake Trailhead is located at milepost 17.3 on the Denali Highway. This trailhead provides access to the Rusty Lake Trail (Table F-5). Signage at the trailhead includes a map and trail information (Table F-1).

### **Swede Lake Trailhead**

Swede Lake Trailhead is located on the Denali Highway at milepost 16.2. This BLM-managed facility provides access to the Swede Lake Trail which connects to Dickey Lake and Alphabet Hills trails (Table F-5). Trailhead signage includes a map and trail description (Table F-1).

### **Denali Highway Information Turnout**

Denali Highway Information Turnout is a small interpretive facility and scenic viewpoint on a paved turnout at milepost 12.7 on the Denali Highway. At the facility there is one BLM-installed interpretive display (Table F-4) and a brochure box that was empty at the time of field inventory. The facility was in good condition but poorly maintained (Table F-1).

### **Wrangell Mountain Viewpoint**

Located at milepost 7.1 on the Denali Highway, Wrangell Mountain Viewpoint (photograph in Appendix K) is a day use area with excellent views of the Wrangell Mountains. There are four interpretive displays, a picnic table, a bench (Table F-4), eight trash receptacles, and two vault toilets at the facility. Wrangell Mountain Viewpoint is well maintained and in good condition (Table F-1).

### **Richardson Highway**

#### **Paxson Lake Campground**

Paxson Lake Campground is a BLM-managed facility at milepost 175 on the Richardson Highway. This facility consists of a boat launch, campground, and day use area. The busiest time for this facility is the 4<sup>th</sup> of July. The boat launch provides access for motorized and non-motorized boats to Paxson Lake and the main stem of Gulkana River (BLM 2011a). The boat launch was constructed with pre-cast concrete planks. A “Kids Don’t Float” life jacket station is adjacent to the boat launch (Table F-2). The campground has a camp host, firewood for



purchase, 50 campsites, 50 tables, a bear box, and an RV dump station. The fee for walk-in campsites is \$6 per night; drive-in sites are \$12 per night (Table F-3). There are also two interpretive displays, a brochure case, and a bench at this facility (Table F-4). The Paxson Lake Campground facility has 22 trash receptacles, four recycling bins, 12 vault toilets, and drinking water. The facility is in good condition and has been well maintained (Table F-1).

### **Middle Fork Trailhead**

Middle Fork Trailhead is located at milepost 169.5 on the Richardson Highway. The parking area is in a large gravel pit. This facility is managed by BLM and provides access to Middle Fork Trail (Table F-5). The trailhead has signage with a map and trail information (Table F-1).

### **Sourdough Creek Campground**

Sourdough Creek Campground is at milepost 147.5 on the Richardson Highway. This is a BLM-managed facility that is comprised of a boat launch to the Gulkana River, a campground, and a day use area. The busiest time of year for this facility is 4<sup>th</sup> of July and king salmon season (BLM 2011a). Life jackets are available next to the paved boat launch through the “Kids Don’t Float” program. There is also a boat dump station at the facility (Table F-2). At the campground there is a camp host, firewood for purchase, 43 campsites, 43 tables, a pavilion, and five bear boxes (Table F-3). For day use, Sourdough Creek campground has four picnic tables, four benches, a full brochure box, and an interpretive walk with six interpretive displays (Table F-4). This facility has drinking water, four recycling bins, 26 trash receptacles, and 12 vault toilets. Sourdough Creek Campground is in good condition and is well maintained (Table F-1).

### **Dry Creek State Recreation Site**

Located at milepost 117.5 on the Richardson Highway, Dry Creek State Recreation Site is an ADNR-managed facility that consists of a campground and day use area. The campground has 67 campsites with tables (\$15/site) (Table F-3). The day use area has four picnic tables and an interpretive display. The daily parking fee is \$5 (Table F-4). Dry Creek State Recreation Site has a dumpster, six toilets, and drinking water. This facility is poorly maintained and in need of heavy repair (Table F-1).

### **Lake Louise Road and Glenn Highway**

#### **Lake Louise State Recreation Area**

Lake Louise State Recreation Area is located at mile 17.2 on Lake Louise Road. This ADNR-managed facility has a boat launch, two campgrounds (Lake Louise Campground and Army Point Campground), and a day use area. There is a \$10 fee for using the gravel boat launch. Life jackets are available near the launch through the “Kids Don’t Float” program (Table F-2). There are a total of 68 campsites (\$15/vehicle) with tables and one pavilion at the facility (Table F-3). The day use parking fee is \$5. There are five interpretive displays at the site (Table F-4). Lake Louise State Recreation Area has 14 trash receptacles, three vault toilets, and drinking water. The facility is poorly maintained and in need of minor repair (Table F-1).



### **Lake Louise Boat Launch**

Lake Louise Boat Launch is located at mile 21 on Lake Louise Road. Signs with safety and boat launch information are present at the facility (Table F-1).

### **Mendeltna Turnout**

Mendeltna Turnout is a small day use area at milepost 152 on the Glenn Highway. There are two picnic tables, one interpretive display (Table F-4), two dumpsters, and two vault toilets at the site. This facility is poorly maintained and in need of minor repair (Table F-1).

### **Chickaloon-Knik-Nelchina Trailhead**

Chickaloon-Knik-Nelchina Trailhead is a day use area and trailhead with a scenic view of the Chugach Mountains. This facility is located at mile 118.5 on the Glenn Highway. For day use there are two benches, eight interpretive displays, two viewing scopes, and a picnic table (Table F-4). Gunsight Mountain Trail, Squaw Creek Trail, and the Chickaloon-Knik-Nelchina Trail System can all be accessed from this trailhead (Table F-5). The facility has a dumpster and two vault toilets. It is well maintained and in need of minor repair (Table F-1).

### **Sheep Mountain Turnout**

Sheep Mountain Turnout is a day use area with scenic views of Sheep Mountain and the Chugach Range. The facility is located on the Glenn Highway at milepost 112.8. Sheep Mountain Turnout has a picnic table and two interpretive displays (Table F-4). The facility is well maintained and in good condition (Table F-1).

### **Matanuska Glacier State Recreation Site**

Located at milepost 101 on the Glenn Highway, Matanuska Glacier State Recreation Site is an ADNR-managed facility that includes a campground, a public use cabin, a day use area, and a scenic view of Matanuska Glacier. The campground has 10 campsites with tables (\$15/site) (Table F-3). The public use cabin sleeps four people and costs \$50 per night (ADNR 2013e). The day use area has two picnic tables, three benches, a pavilion, and an interpretive walk and nine interpretive displays. The daily parking fee is \$5 (Table F-4). Matanuska State Recreation Site has drinking water, two trash receptacles, and six vault toilets. The facility is well maintained and in need of minor repair (Table F-1).

### **Purinton Creek Trailhead**

Purinton Creek Trailhead is located at milepost 90.5 on the Glenn Highway. It provides access to Purinton Creek Trail which connects to the Chickaloon-Knik-Nelchina Trail System (Table F-5).

### **Long Lake State Recreation Site**

Long Lake State Recreation Site is located at milepost 85.4 on the Glenn Highway. There is a gravel boat launch and an interpretive sign about sport fish restoration at the site (Table F-2);



Table F-4). The facility does not appear to be maintained and it is in need of heavy repair (Table F-1).

### **Bonnie Lake State Recreation Site**

Bonnie Lake State Recreation Site is located down a narrow gravel road off the Glenn Highway at milepost 83.3. The gravel road is not recommended for trailers or RVs. There is a gravel boat ramp and floating dock at Bonnie Lake State Recreation Site (Table F-2). The facility does not appear to be maintained and components are in need of replacement (Table F-1).

### **King Mountain State Recreation Site**

King Mountain State Recreation Site is an ADNR-managed campground at milepost 76.6 on the Glenn Highway. There is a camp host, a pavilion and 24 campsites (\$15/site) with tables at each site (Table F-3). The day parking fee is \$5. There are five trash receptacles and two vault toilets as well as drinking water at King Mountain State Recreation Area. The facility is poorly maintained and in need of heavy repairs (Table F-1).



## 2. TABLES

Table F-1. Developed Recreation Facilities

Recreation Site	Boat Launch	Campground	Day Use	Trailhead	Viewpoint	Signage	Parking Area	Trash Receptacles	Toilets	Drinking Water	Condition	Maintenance	Managing Agency
<b>Parks Highway</b>													
East-West Express Trailhead				X	X	Yes	Paved	0	1 <sup>1</sup>	No	U	U	U
Denali View South		X	X		X	Yes	Paved	3	4	Yes	G	W	ADNR
Lower Troublesome Creek		X	X	X		Yes	Paved	2	2	Yes	M	P	ADNR
Upper Troublesome Creek				X		Yes	Unpaved	1	2	No <sup>2</sup>	G	W	ADNR
Byers Lake	X	X	X	X		Yes	Unpaved	15	6	Yes	G <sup>3</sup>	W <sup>3</sup>	ADNR
Alaska Veterans Memorial & Visitor Center			X		X	Yes	Paved	8	8	Yes	G	W	ADNR
Ermine Hill Trailhead				X		Yes	Unpaved	0	0	No	U	U	ADNR
Denali Viewpoint					X	Yes	Paved	0	0	No	G	W	ADNR
Denali View North		X	X		X	Yes	Paved	9	4	No <sup>2</sup>	M	W	ADNR
Little Coal Creek Trailhead				X		Yes	Unpaved	2	2	No	G	W	ADNR
Hurricane Gulch Parking Area					X	No	Paved	0	0	No	G	W	ADOT&PF
East Fork Chulitna Wayside						No	Paved	2	2	No	G	W	ADOT&PF
East Fork Chulitna Campground		X				Yes	Paved	3	2	No	G	W	ADOT&PF
<b>Talkeetna Spur Road</b>													
Luthman Trailhead				X		Yes	Unpaved	0	0	No	U	U	MSB



Recreation Site	Boat Launch	Campground	Day Use	Trailhead	Viewpoint	Signage	Parking Area	Trash Receptacles	Toilets	Drinking Water	Condition	Maintenance	Managing Agency
Tigger Lake Trailhead				X		Yes	Unpaved	0	0	No	U	U	MSB
Talkeetna Lakes Park				X		Yes	Unpaved	1	1	No	G	W	MSB
Christiansen Lake Park	X <sup>4</sup>		X			Yes	Unpaved	1	1	No	G	W	MSB
Talkeetna Denali Viewpoint				X	X	No	Paved	0	0	No	G	W	ADOT&PF
Talkeetna Boat Launch & Campground	X	X	X			Yes	Unpaved	5 <sup>5</sup>	2	Yes	G <sup>3</sup>	W <sup>3</sup>	ADF&G, Talkeetna RV
Village Park			X			Yes	— <sup>6</sup>	2	2	No	G	W	MSB
Chase Trailhead				X		U	Unpaved	0	0	No	U	U	MSB
Talkeetna River Park		X				Yes	Unpaved	2	2 <sup>7</sup>	Yes	G	W	MSB
<b>Alaska Railroad</b>													
Curry Interpretive Walk			X			Yes	—	0	0	No	M	P	ARRC
<b>Denali Highway</b>													
Nenana River Boat Launch	X					Yes	Unpaved	0	0	No	U	U	ADNR
Denali Highway Orientation Turnout			X		X	No	Unpaved	0	0	No	M	P	BLM
Brushkana Creek Campground		X	X	X		Yes	Unpaved	20 <sup>8</sup>	6	Yes	M	W	BLM
Alaska Range Interpretive Site			X		X	U	Unpaved	0	0	No	U	U	BLM
Clearwater Creek Wayside			X	X		Yes	Unpaved	0	2	No	M	W	BLM
Maclaren Summit Trailhead				X		Yes	—	0	0	No	U	U	ADNR
Osar Lake Trailhead				X		Yes	Unpaved	0	0	No	U	U	BLM
Glacier Gap Lake to Sevenmile Lake				X		Yes	Unpaved	0	0	No	U	U	ADNR



Recreation Site	Boat Launch	Campground	Day Use	Trailhead	Viewpoint	Signage	Parking Area	Trash Receptacles	Toilets	Drinking Water	Condition	Maintenance	Managing Agency
Trailhead													
Landmark Gap South Trailhead				X		Yes	Unpaved	0	0	No	U	U	BLM
Landmark Gap Lake Trailhead				X		Yes	Unpaved	0	0	No	U	U	ADNR
Delta National Wild & Scenic River Wayside	X		X			Yes	Unpaved	8 <sup>8</sup>	2	Yes	M	W	BLM
Tangle Lakes Campground	X	X	X	X		Yes	Unpaved	32 <sup>8</sup>	8	Yes	G	W	BLM
Rusty Lake Trailhead				X		Yes	Paved	0	0	No	U	U	ADNR
Swede Lake Trailhead				X		Yes	Unpaved	0	0	No	U	U	BLM
Denali Highway Information Turnout			X		X	No	Paved	0	0	No	G	P	BLM
Wrangell Mountain Viewpoint			X		X	Yes	Paved	8	2	No	G	W	BLM
<b>Richardson Highway</b>													
Paxson Lake Campground	X	X	X			Yes	Unpaved	22 <sup>8</sup>	12	Yes	G	W	BLM
Middle Fork Trailhead				X		Yes	Unpaved	0	0	No	U	U	BLM
Sourdough Creek Campground	X	X	X			Yes	Unpaved	26 <sup>8</sup>	12	Yes	G	W	BLM
Dry Creek State Recreation Site		X	X			Yes	Unpaved	1 <sup>5</sup>	6	Yes	H	P	ADNR
<b>Lake Louise Road</b>													
Lake Louise State Recreation Area	X	X	X			Yes	Unpaved	14	3	Yes	M	P	ADNR
Lake Louise Boat Launch	X					Yes	U	0	0	No	U	U	ADOT&PF



Recreation Site	Boat Launch	Campground	Day Use	Trailhead	Viewpoint	Signage	Parking Area	Trash Receptacles	Toilets	Drinking Water	Condition	Maintenance	Managing Agency
<b>Glenn Highway</b>													
Mendeltna Turnout			X			No	Paved	2 <sup>5</sup>	2	No	M	P	ADOT&PF
Chickaloon-Knik-Nelchina Trailhead			X	X	X	Yes	Paved	1 <sup>5</sup>	2	No	M	W	ADOT&PF
Sheep Mountain Turnout			X		X	No	Paved	0	0	No	G	W	ADOT&PF
Matanuska Glacier State Recreation Site		X	X		X	Yes	Paved	2	6	Yes	M <sup>3</sup>	W <sup>3</sup>	ADNR
Purinton Creek Trailhead				X		Yes	Unpaved	0	0	No	U	U	U
Long Lake State Recreation Site	X		X			Yes	Unpaved	0	0	No	H	N	ADNR
Bonnie Lake State Recreation Site	X					Yes	Unpaved	0	0	No	R	N	ADF&G
King Mountain State Recreation Site		X				Yes	—	5	2	Yes	H	P	ADNR

Note: A dash indicates that the category does not apply. Some facilities may be located on private lands; this study report is not intended to suggest that the recreating public is authorized to access these lands for recreation purposes.

U=Unknown/Uncollected. Information will be collected in 2014.

G=Good Condition; M=Needs Minor Repair; H=Needs Heavy Repair; R=Needs Replacing; W=Well Maintained; P=Poorly Maintained; N=Not Maintained

Trash receptacles are garbage can sized unless otherwise indicated.

Toilets are vault unless otherwise indicated.

1. Outhouse
2. Drinking water out of order
3. Condition and maintenance information for Byers Lake does not include lakeshore campsites or public use cabins. Condition and maintenance information for Talkeetna Boat Launch & Campground does not include the boat launch. Condition and maintenance information for Matanuska Glacier State Recreation Site does not include public use cabin.
4. Carry-in for paddle-craft
5. Dumpsters
6. Parking available in the vicinity
7. Flush toilets
8. Recycling bins also provided



Table F-2. Developed Boat Launches

Recreation Site	Launch Type	Fee	Other Facilities	Life Jackets Provided
<b><i>Parks Highway</i></b>				
Byers Lake	Gravel	—	1 Floating Dock	Yes
<b><i>Talkeetna Spur Road</i></b>				
Christiansen Lake Park	Gravel	—	—	No
Talkeetna Boat Launch & Campground	Concrete Plank Ramp	\$20	—	No
<b><i>Denali Highway</i></b>				
Nenana River Boat Launch	Gravel	—	—	No
Delta National Wild & Scenic River Wayside	Concrete Plank Ramp	—	—	Yes
Tangle Lakes Campground	Gravel Ramp	—	—	Yes
<b><i>Richardson Highway</i></b>				
Paxson Lake Campground	Concrete Plank Ramp	—	—	Yes
Sourdough Creek Campground	Paved	—	Boat Dump Station	Yes
<b><i>Lake Louise Road</i></b>				
Lake Louise State Recreation Area	Gravel Ramp	\$10	—	Yes
Lake Louise Boat Launch	U	—	—	No
<b><i>Glenn Highway</i></b>				
Long Lake State Recreation Site	Gravel Ramp	—	—	No
Bonnie Lake State Recreation Site	Gravel Ramp	—	1 Floating Dock	No

Note: Life jackets are provided for no fee through the "Kids Don't Float" program. Some facilities may be located on private lands; this study report is not intended to suggest that the recreating public is authorized to access these lands for recreation purposes.



Table F-3. Developed Campgrounds

Recreation Site	Fee	On-Site Staff	Firewood	Camp Sites	Tables	Pavilions	Bear Boxes	RV Dump Station
<b><i>Parks Highway</i></b>								
Denali View South	\$10 <sup>1</sup>	—	No	10	10 <sup>2</sup>	0	0	No
Lower Troublesome Creek	\$10 <sup>1</sup>	—	No	11	9	0	1	No
Byers Lake	\$10	1 Host	Yes	61 <sup>3</sup>	61	0	2	Yes
Denali View North	\$10 <sup>1</sup>	1 Host	No	14	14	0	0	No
East Fork Chulitna Campground	—	—	No	11	13	1	0	No
<b><i>Talkeetna Spur Road</i></b>								
Talkeetna Boat Launch & Campground	\$20	U	Yes	26	26	0	0	No
Talkeetna River Park	\$10	—	No	10	10	0	0	No
<b><i>Denali Highway</i></b>								
Brushkana Creek Campground	\$12	1 Host	No	22	22	0	0	No
Tangle Lakes Campground	\$6 <sup>4</sup> ; \$12	1 Host	Yes	46	46	0	1	No
<b><i>Richardson Highway</i></b>								
Paxson Lake Campground	\$6 <sup>4</sup> ; \$12	1 Host	Yes	50	50	0	1	Yes
Sourdough Creek Campground	\$6 <sup>4</sup> ; \$12	1 Host	Yes	43	43	1	5	No
Dry Creek State Recreation Site	\$15	—	No	67	67	0	0	No
<b><i>Lake Louise Road</i></b>								
Lake Louise State Recreation Area	\$15 <sup>1</sup>	—	No	68	68	1	0	No
<b><i>Glenn Highway</i></b>								



Recreation Site	Fee	On-Site Staff	Firewood	Camp Sites	Tables	Pavilions	Bear Boxes	RV Dump Station
<b>Matanuska Glacier State Recreation Site</b>	\$15	—	No	10 <sup>3</sup>	10	0	0	No
<b>King Mountain State Recreation Site</b>	\$15	1 Host	No	24	24	1	0	No

Note: All fees are per campsite unless otherwise indicated. Some facilities may be located on private lands; this study report is not intended to suggest that the recreating public is authorized to access these lands for recreation purposes.

1. Fee per vehicle
2. These tables double as day use tables
3. Three public use cabins are also available for rent at Byers Lake. One public use cabin is available at Matanuska Glacier State Recreation Area.
4. Walk-in campsite fee



Table F-4. Developed Day Use Areas

Recreation Site	Fee	Tables	Benches	Pavilions	Interpretive Displays	Other Features
<b><i>Parks Highway</i></b>						
Denali View South	—	10 <sup>1</sup>	4	0	8	—
Lower Troublesome Creek	\$5	3	0	1	2	—
Byers Lake	\$5	9	0	0	6	—
Alaska Veterans Memorial & Visitor Center	—	8	8	0	14 <sup>2</sup>	Visitor Center/Bookstore, Viewing Scope
Denali View North	—	0	4	0	10	Native Plant Walk, Viewing Scope
<b><i>Talkeetna Spur Road</i></b>						
Christiansen Lake Park	—	9	0	2	0	Swimming Beach
Talkeetna Boat Launch & Campground	\$6	35	0	3	0	Tackle Shop
Village Park	—	3	—	0	0	Band Shell
<b><i>Alaska Railroad</i></b>						
Curry Interpretive Walk	—	0	1	1 <sup>3</sup>	4	Old Trains, Interpretive Walk
<b><i>Denali Highway</i></b>						
Denali Highway Orientation Turnout	—	0	0	0	1	—
Brushkana Creek Campground	—	0	1	1	1	—
Alaska Range Interpretive Site	—	0	0	0	1	Dispersed Recreation Site
Clearwater Creek Wayside	—	2	0	0	1	—
Delta National Wild & Scenic River Wayside	—	6	0	0	2	—
Tangle Lakes Campground	—	3	0	0	3	—



Recreation Site	Fee	Tables	Benches	Pavilions	Interpretive Displays	Other Features
Denali Highway Information Turnout	—	0	0	0	1	—
Wrangell Mountain Viewpoint	—	1	1	0	4	—
<b>Richardson Highway</b>						
Paxson Lake Campground	—	0	1	0	2	—
Sourdough Creek Campground	—	4	4	0	6	Interpretive Walk
Dry Creek State Recreation Site	\$5	4	0	0	1	—
<b>Lake Louise Road</b>						
Lake Louise State Recreation Area	\$5	0	0	0	5	—
<b>Glenn Highway</b>						
Mendeltna Turnout	—	2	0	0	1	—
Chickaloon-Knik-Nelchina Trailhead	—	1	2	0	8	2 Viewing Scopes
Sheep Mountain Turnout	—	1	0	0	2	—
Matanuska Glacier State Recreation Site	\$5	2	3	1	9	Interpretive Walk
Long Lake State Recreation Site	—	0	0	0	1	—

Note: Some facilities may be located on private lands; this study report is not intended to suggest that the recreating public is authorized to access these lands for recreation purposes.

1. These tables double as camp site tables
2. One volunteer site host present
3. Screened pavilion



Table F-5. Developed Trailheads

Recreation Site	Parking Fee	Associated Trails
<b><i>Parks Highway</i></b>		
East-West Express Trailhead	—	East-West Express Trail, Chulitna Bluffs Trail
Lower Troublesome Creek	\$5	Chulitna Confluence Trail
Upper Troublesome Creek	\$5/night	Upper Troublesome Creek Trail, Kesugi Ridge Trail
Byers Lake	\$5	Byers Lake Loop Trail, Cascade Trail
Ermine Hill Trailhead	—	Ermine Hill Trail, Kesugi Ridge Trail
Little Coal Creek Trailhead	\$5	Kesugi Ridge Trail, Little Coal Creek Trail
<b><i>Talkeetna Spur Road</i></b>		
Luthman Trailhead	—	Luthman Trail
Tigger Lake Trailhead	—	Tigger Lake Trail, Talkeetna Lakes Trails
Talkeetna Lakes Park	\$3	Talkeetna Lakes Trail System
Talkeetna Denali Viewpoint	—	Talkeetna Spur Road Bike Path
Chase Trailhead	\$3	Chase Trail
<b><i>Denali Highway</i></b>		
Brushkana Creek Campground	—	Brushkana Creek Trail
Clearwater Creek Wayside	—	Clearwater Creek Trail
Maclaren Summit Trailhead	—	Maclaren Summit Trail
Osar Lake Trailhead	—	Osar Lake Trail
Glacier Gap Lake to Sevenmile Lake Trailhead	—	Glacier Gap Lake to Sevenmile Lake Trail
Landmark Gap South Trailhead	—	Landmark Gap South Trail
Landmark Gap Lake Trailhead	—	Landmark Gap Trail
Tangle Lakes Campground	—	Tangle Ridge Trail, Lake Overlook Trail
Rusty Lake Trailhead	—	Rusty Lake Trail
Swede Lake Trailhead	—	Swede Lake Trail, Dickey Lake Trail, Alphabet Hills Trail



Recreation Site	Parking Fee	Associated Trails
<b><i>Richardson Highway</i></b>		
<b>Middle Fork Trailhead</b>	—	Middle Fork Trail
<b><i>Glenn Highway</i></b>		
<b>Chickaloon-Knik-Nelchina Trailhead</b>	—	Gunsight Mountain Trail, Trail, Squaw Creek Trail, Chickaloon-Knik-Nelchina Trail System
<b>Purinton Creek Trailhead</b>	—	Purinton Creek Trail, Chickaloon-Knik-Nelchina Trail System

Note: Fees are the same as day use. Some facilities may be located on private lands; this study report is not intended to suggest that the recreating public is authorized to access these lands for recreation purposes.