

PART A - APPENDIX A: VIDEO CAMERAS AND EXAMPLE IMAGES

PART A - APPENDIX B: STILL CAMERAS AND EXAMPLE IMAGES

PART A - APPENDIX C: COMPOSITE SIGHTINGS FOR AERIAL  
SURVEYS DURING HIGH, INTERMEDIATE, AND LOW TIDES

PART A - APPENDIX D: INDIVIDUAL AERIAL SURVEY MAPS FOR 2013

**Susitna-Watana Hydroelectric Project  
(FERC No. 14241)**

**Cook Inlet Beluga Whale Study (9.17)**

**Part A - Appendix A  
Video Cameras and Example Images**

**Initial Study Report**

Prepared for

Alaska Energy Authority



**SUSITNA-WATANA HYDRO**

*Clean, reliable energy for the next 100 years.*

Prepared by

HDR, Inc.

June 2014

## Video Camera Figures



Figure 1: Video camera West site. Left image shows camera. Right image shows camera view.



Figure 2: Video camera East site. Left image shows camera. Right image shows camera view.



**Figure 3: Video camera repeater site.**



**Susitna-Watana Hydroelectric Project  
(FERC No. 14241)**

**Cook Inlet Beluga Whale Study (9.17)**

**Part A - Appendix B  
Still Cameras and Example Images**

**Initial Study Report**

Prepared for

Alaska Energy Authority



**SUSITNA-WATANA HYDRO**

*Clean, reliable energy for the next 100 years.*

Prepared by

HDR, Inc.

June 2014

## Still Camera Figures



Figure 1: Still camera site 1. Left image shows camera. Right image shows camera view.



Figure 2: Still camera site 2. Left image shows camera. Right image shows camera view.

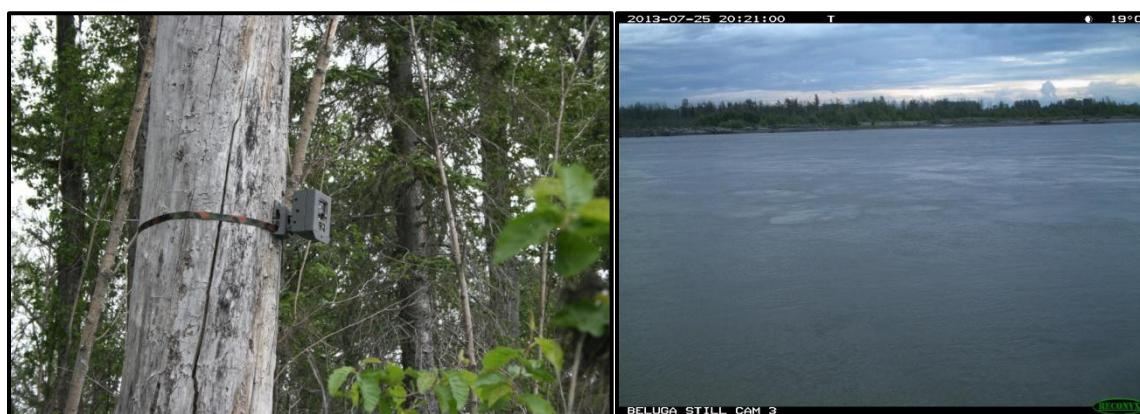


Figure 3: Still camera site 3. Left image shows camera. Right image shows camera view.



**Figure 4: Still camera site 4. Left image shows camera. Right image shows camera view.**

**Susitna-Watana Hydroelectric Project  
(FERC No. 14241)**

**Cook Inlet Beluga Whale Study (9.17)**

**Part A - Appendix C  
Composite Sightings for Aerial Surveys During High,  
Intermediate, and Low Tides**

**Initial Study Report**

Prepared for

Alaska Energy Authority



**SUSITNA-WATANA HYDRO**

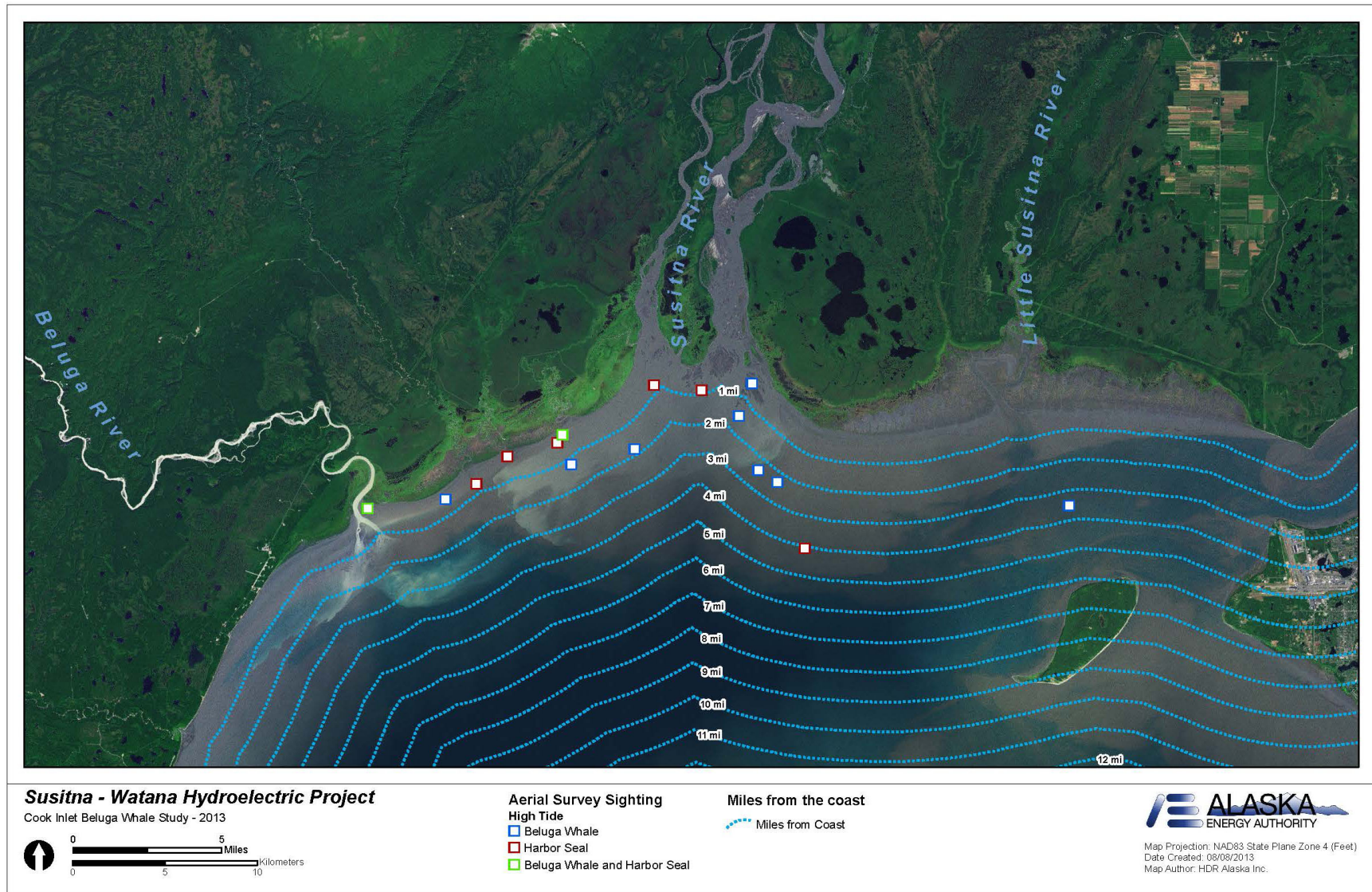
*Clean, reliable energy for the next 100 years.*

Prepared by

HDR, Inc.

June 2014





**Figure 1. Distribution of Cook Inlet beluga whale and harbor seal sightings during aerial surveys targeting high tide. Dotted lines placed at one-mile increments from the "typical" shoreline.**



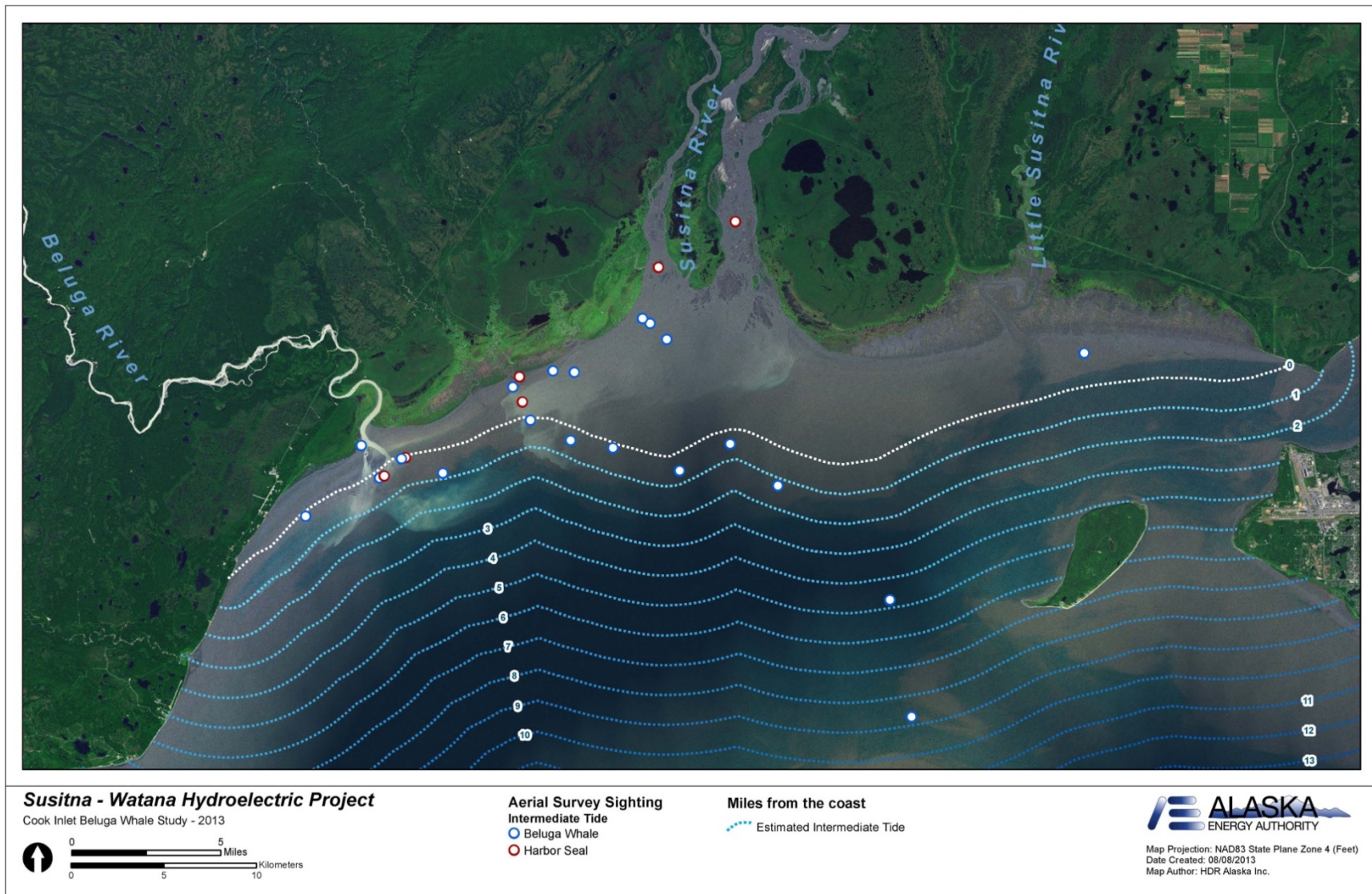
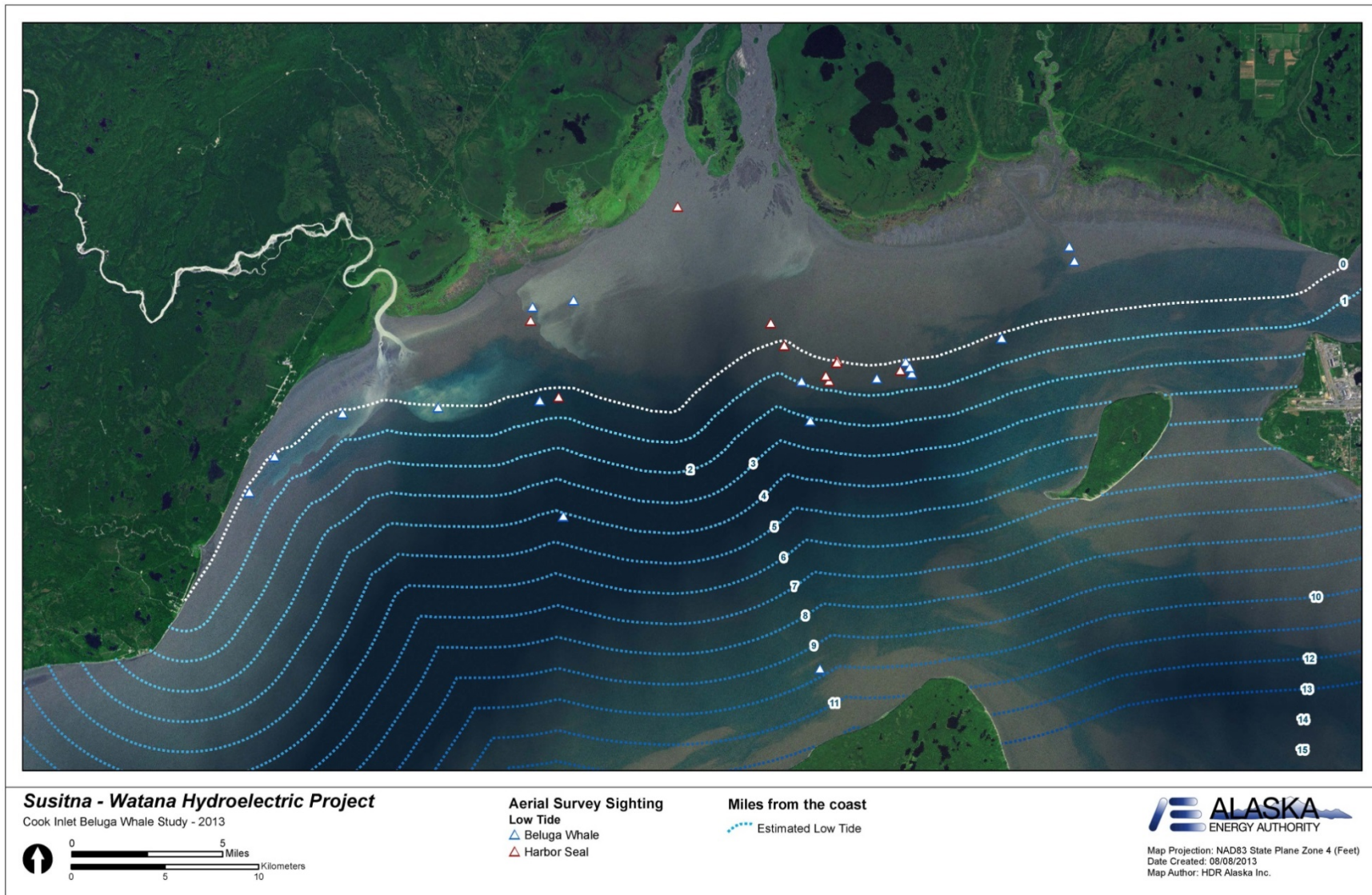


Figure 2. Cook Inlet beluga whale and harbor seal sightings during aerial surveys targeting intermediate tide. Northern extent of inundation (exclusive of deep channels) estimated as the white dotted line. Other dotted lines placed at one-mile increments from the inundation extent.





**Figure 3. Cook Inlet beluga whale and harbor sealsightings during aerial surveys targeting low tide. Northern extent of inundation (exclusive of deep channels) estimated as the white dotted line. Other dotted lines placed at one-mile increments from the inundation extent.**



**Susitna-Watana Hydroelectric Project  
(FERC No. 14241)**

**Cook Inlet Beluga Whale Study (9.17)**

**Part A - Appendix D  
Individual Arial Survey Maps for 2013**

**Initial Study Report**

Prepared for

Alaska Energy Authority



**SUSITNA-WATANA HYDRO**

*Clean, reliable energy for the next 100 years.*

Prepared by

HDR, Inc.

June 2014

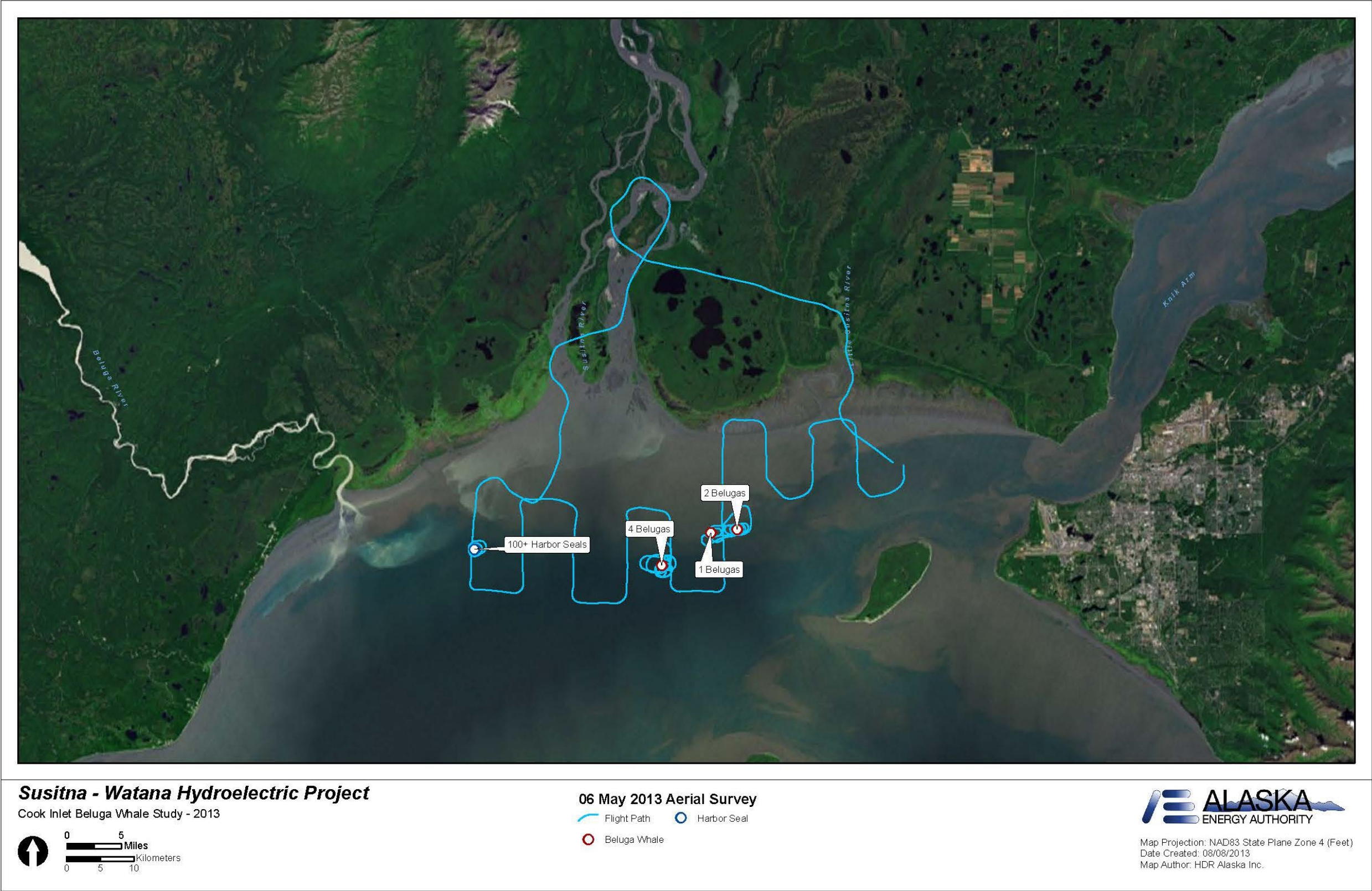


Figure 1. Map of aerial survey flown on May 6, 2013 showing locations of beluga whales and harbor seals.



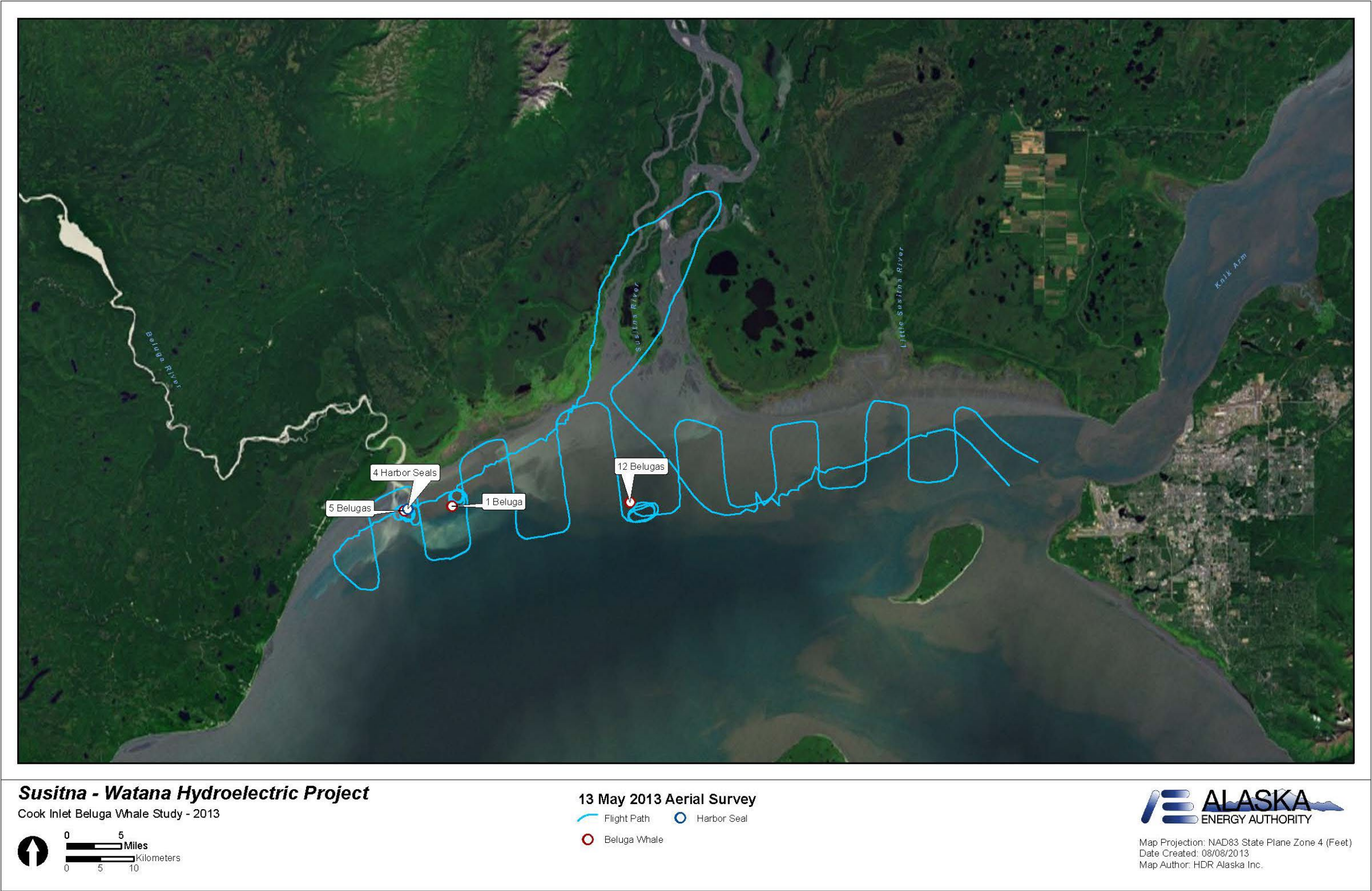


Figure 2. Map of aerial survey flown on May 13, 2013 showing locations of beluga whales and harbor seals.



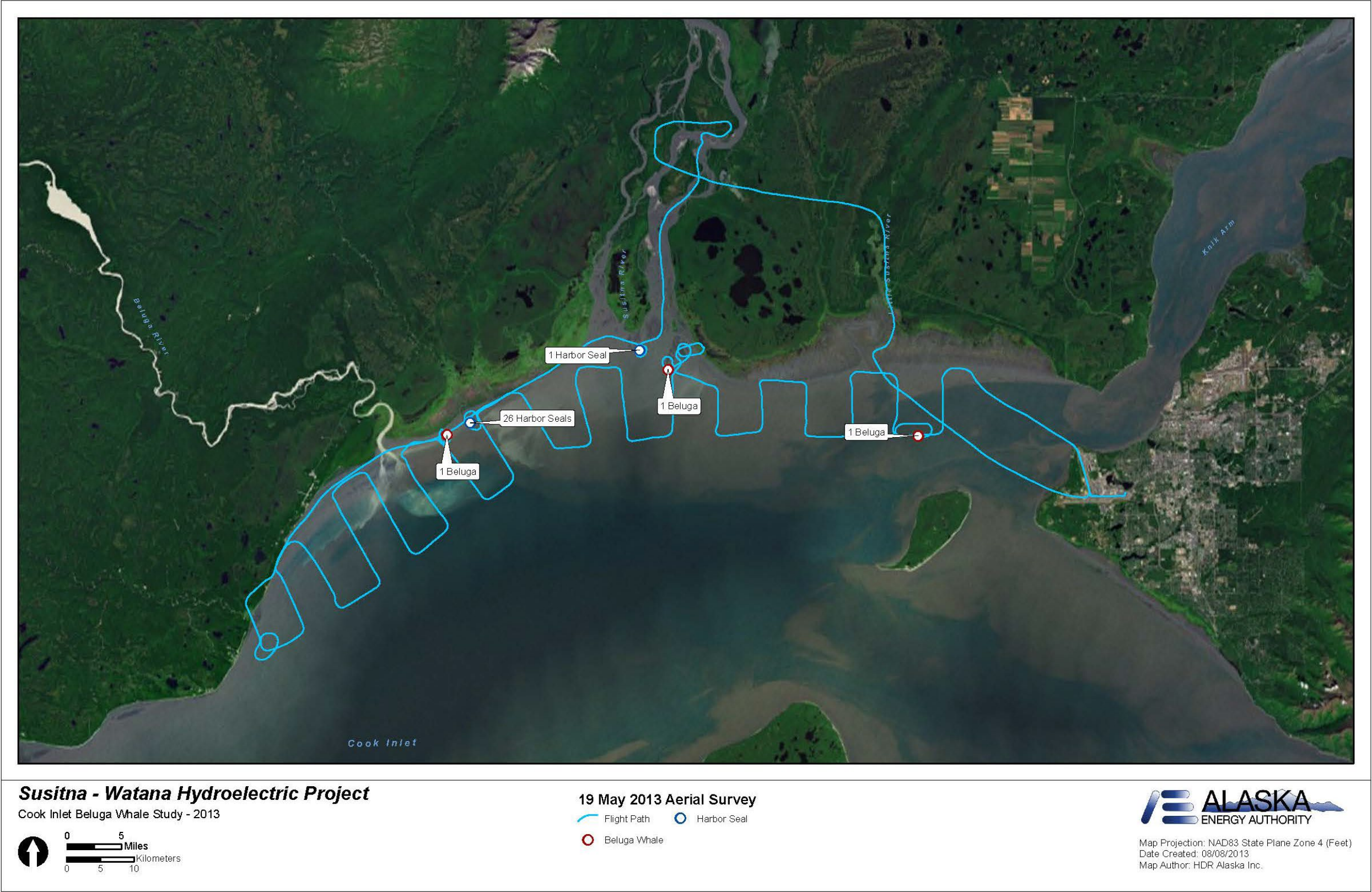


Figure 3. Map of aerial survey flown on May 19, 2013 showing locations of beluga whales and harbor seals.



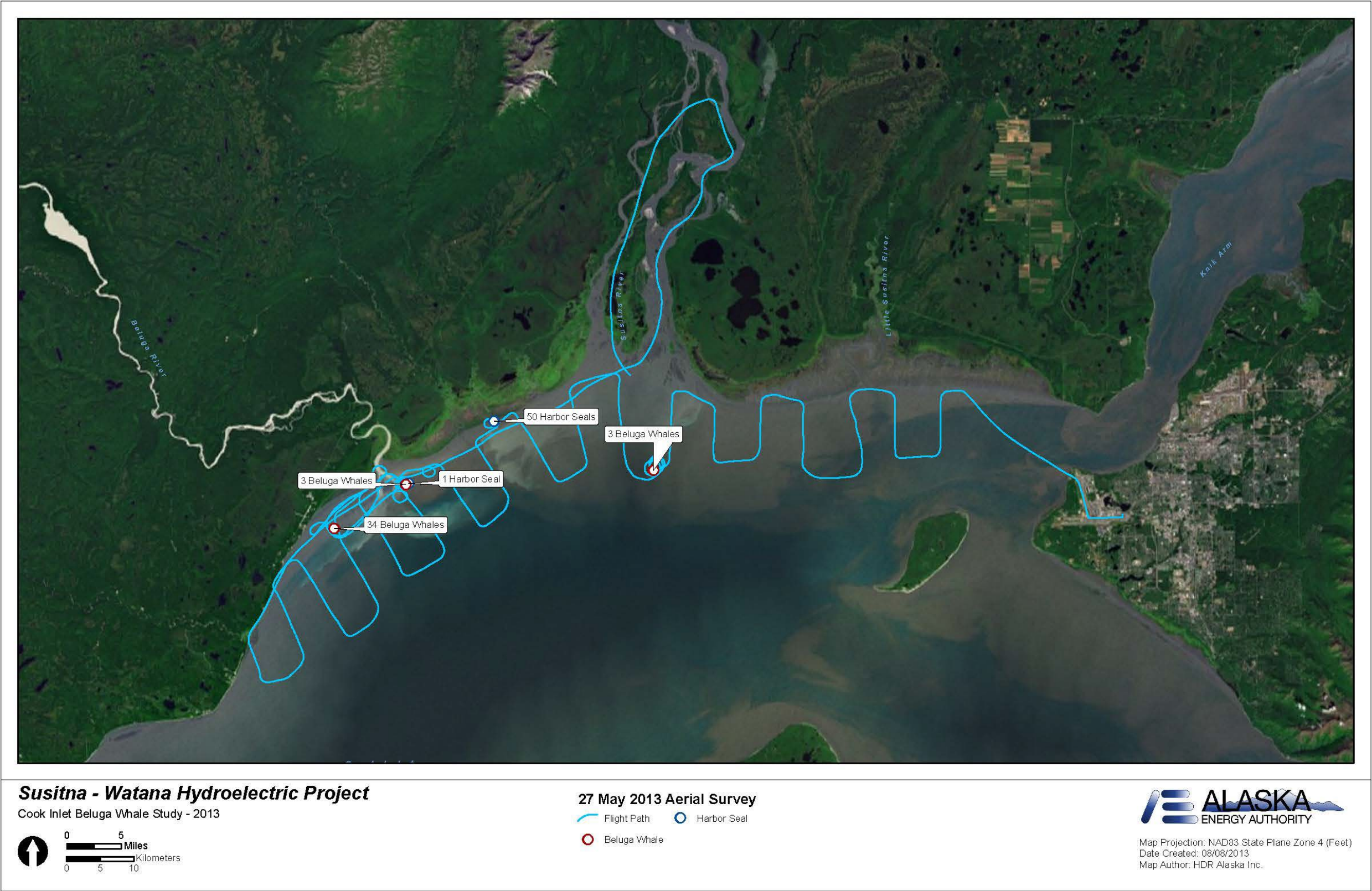


Figure 4. Map of aerial survey flown on May 27, 2013 showing locations of beluga whales and harbor seals.



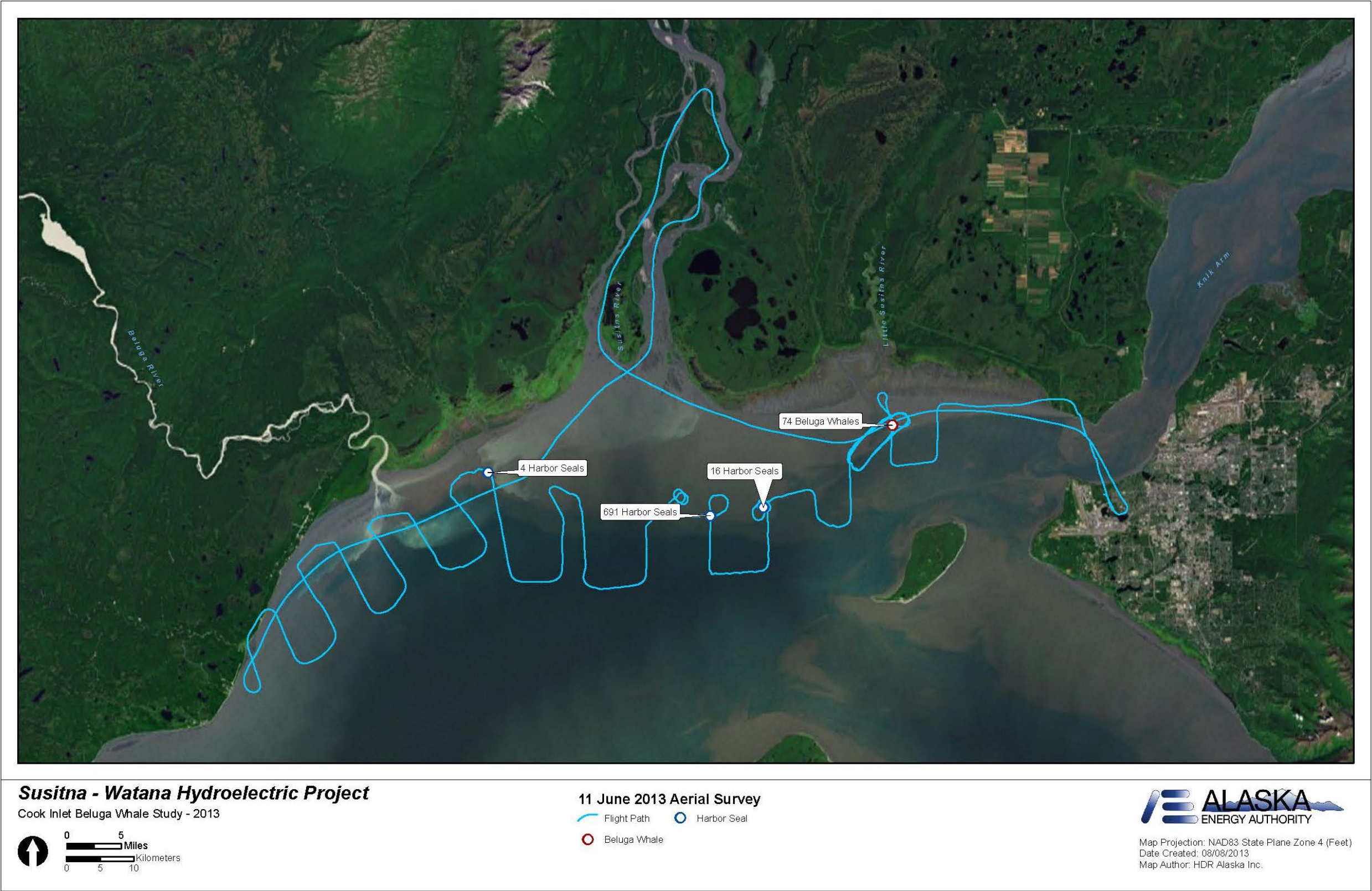


Figure 5. Map of aerial survey flown on June 11, 2013 showing locations of beluga whales and harbor seals.



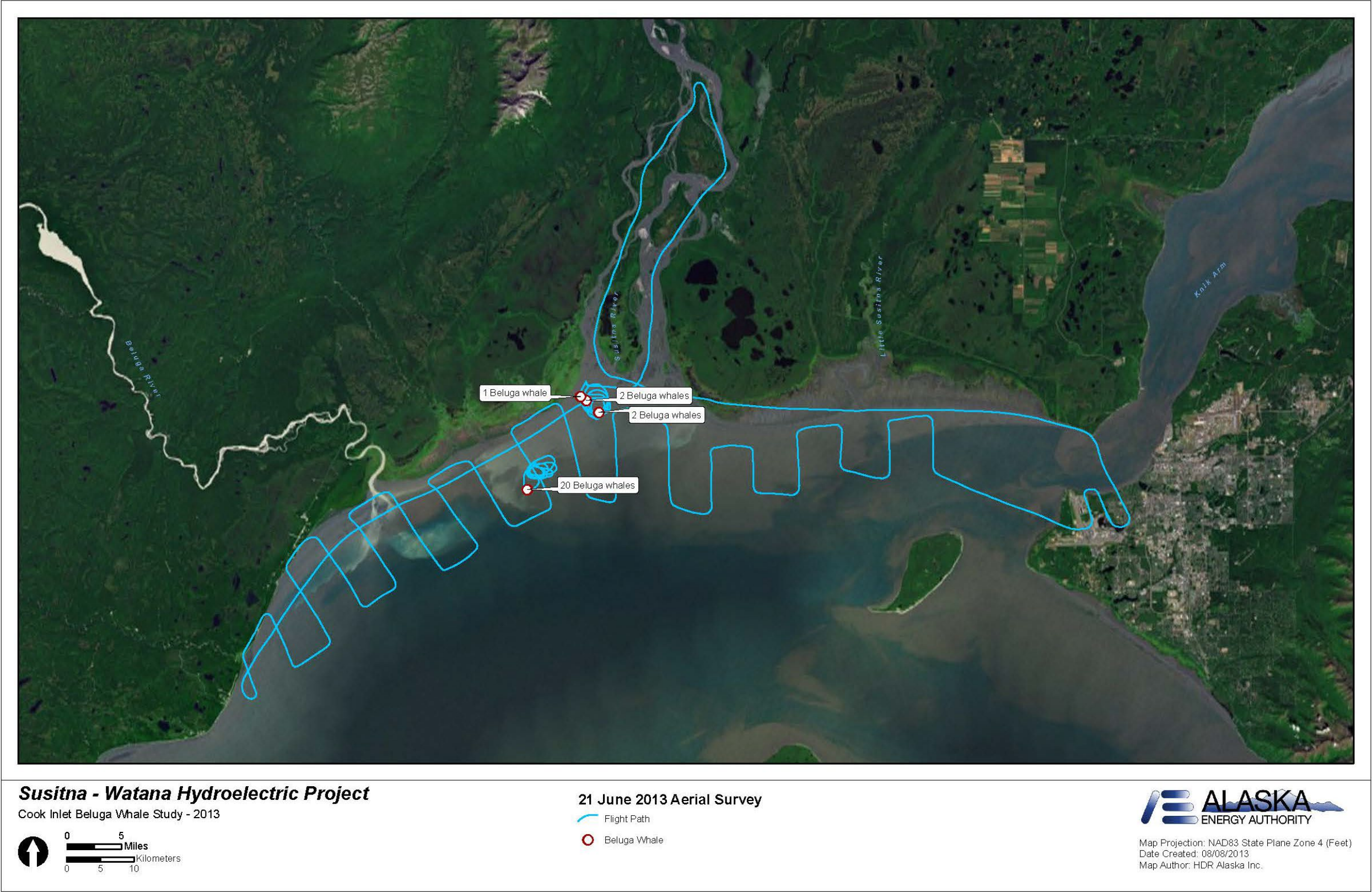


Figure 6. Map of aerial survey flown on June 21, 2013 showing locations of beluga whales. No harbor seals were sighted.



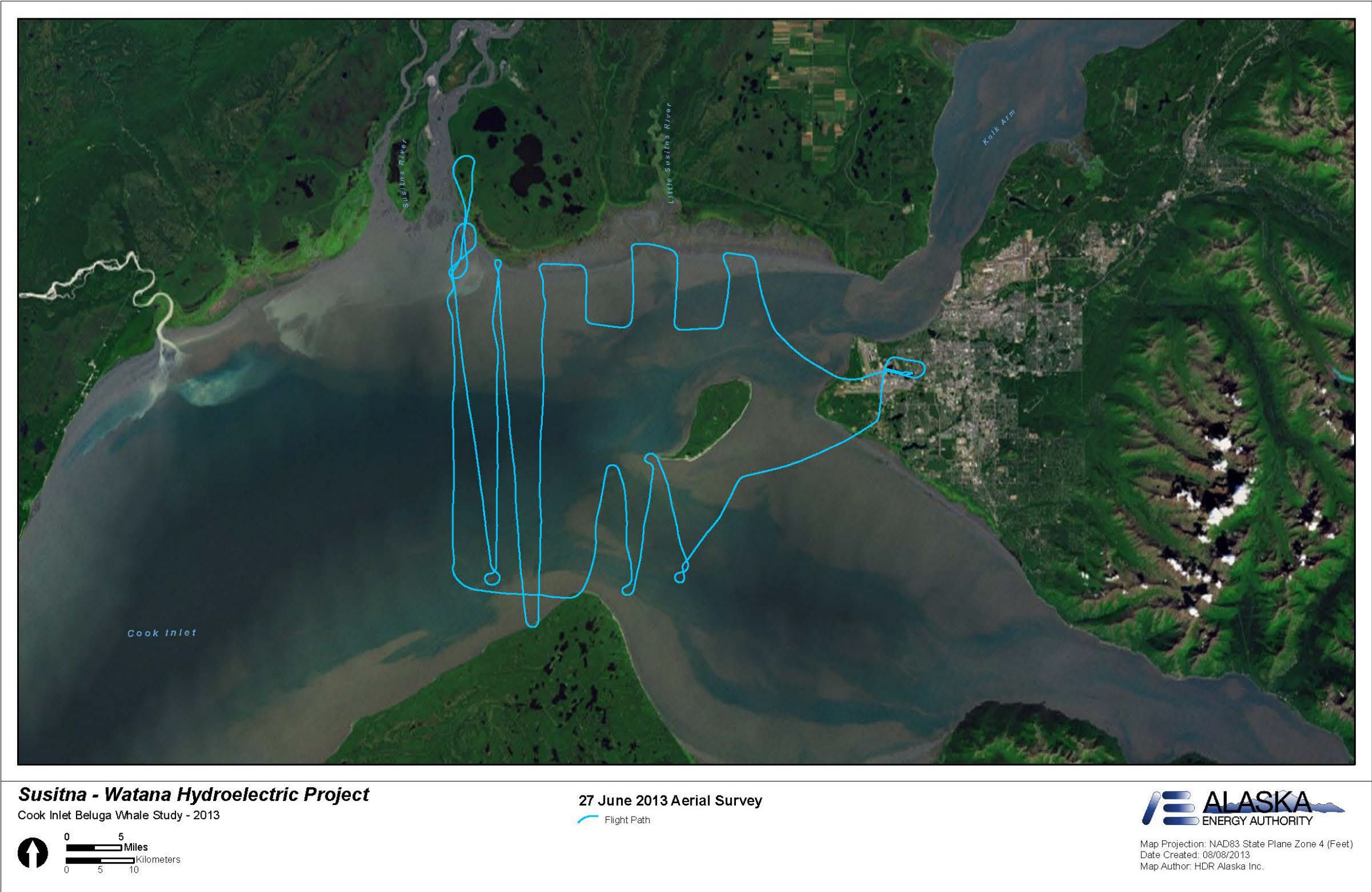
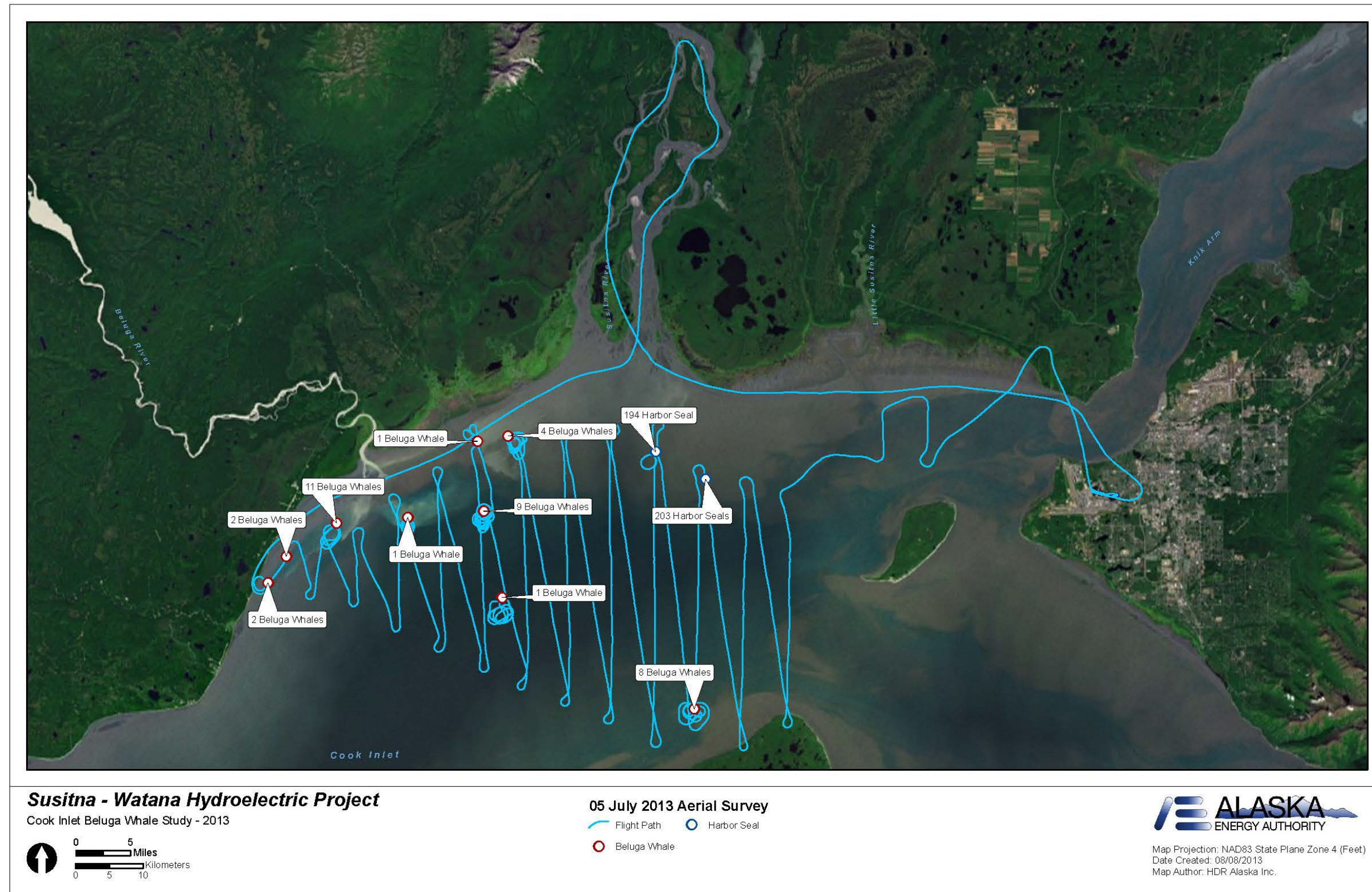


Figure 7. Map of aerial survey flown on June 27, 2013. No beluga whales or harbor seals were sighted.





**Figure 8. Map of aerial survey flown on July 5, 2013 showing locations of beluga whales and harbor seals.**



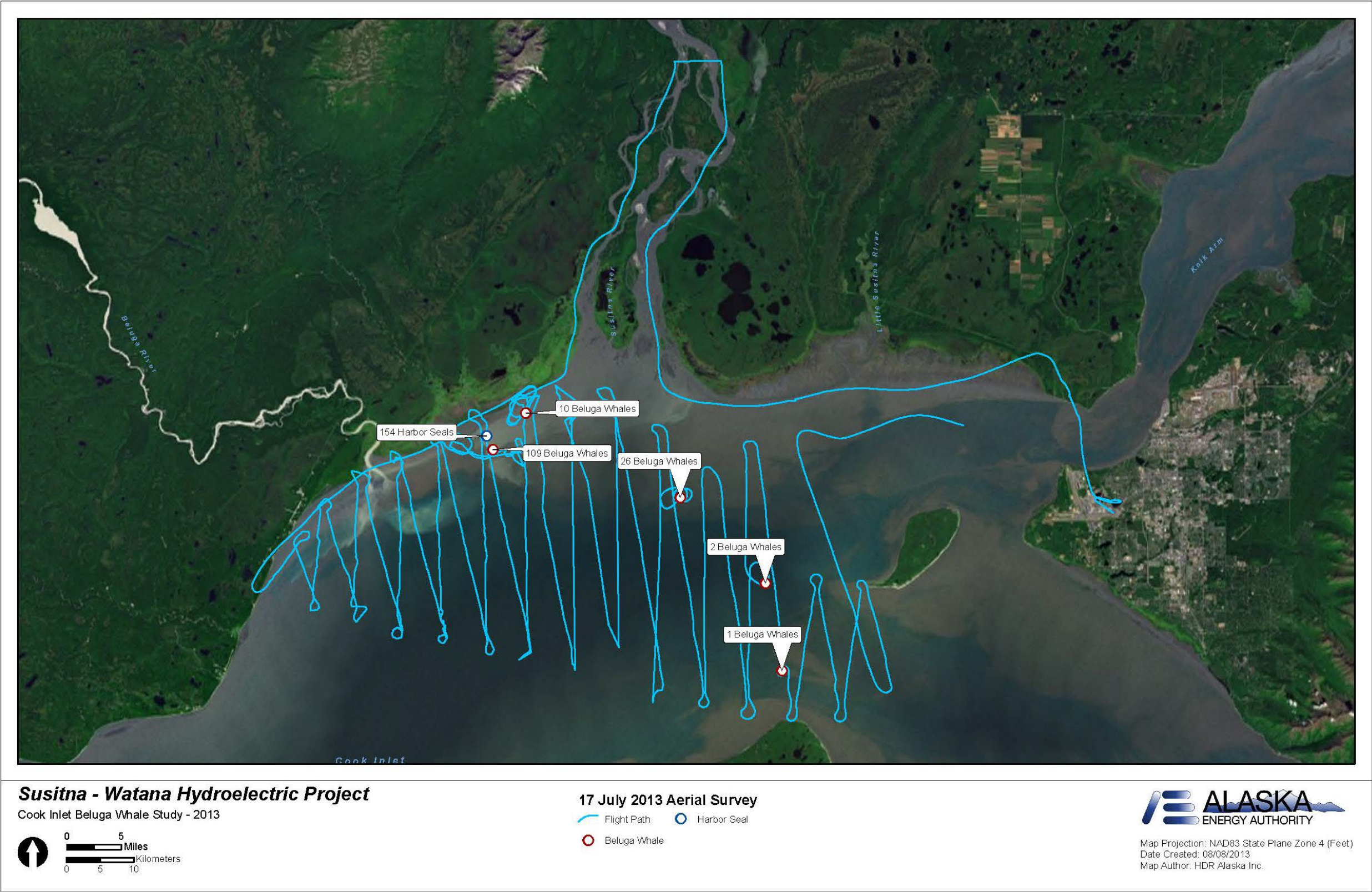


Figure 9. Map of aerial survey flown on July 17, 2013 showing locations of beluga whales and harbor seals.



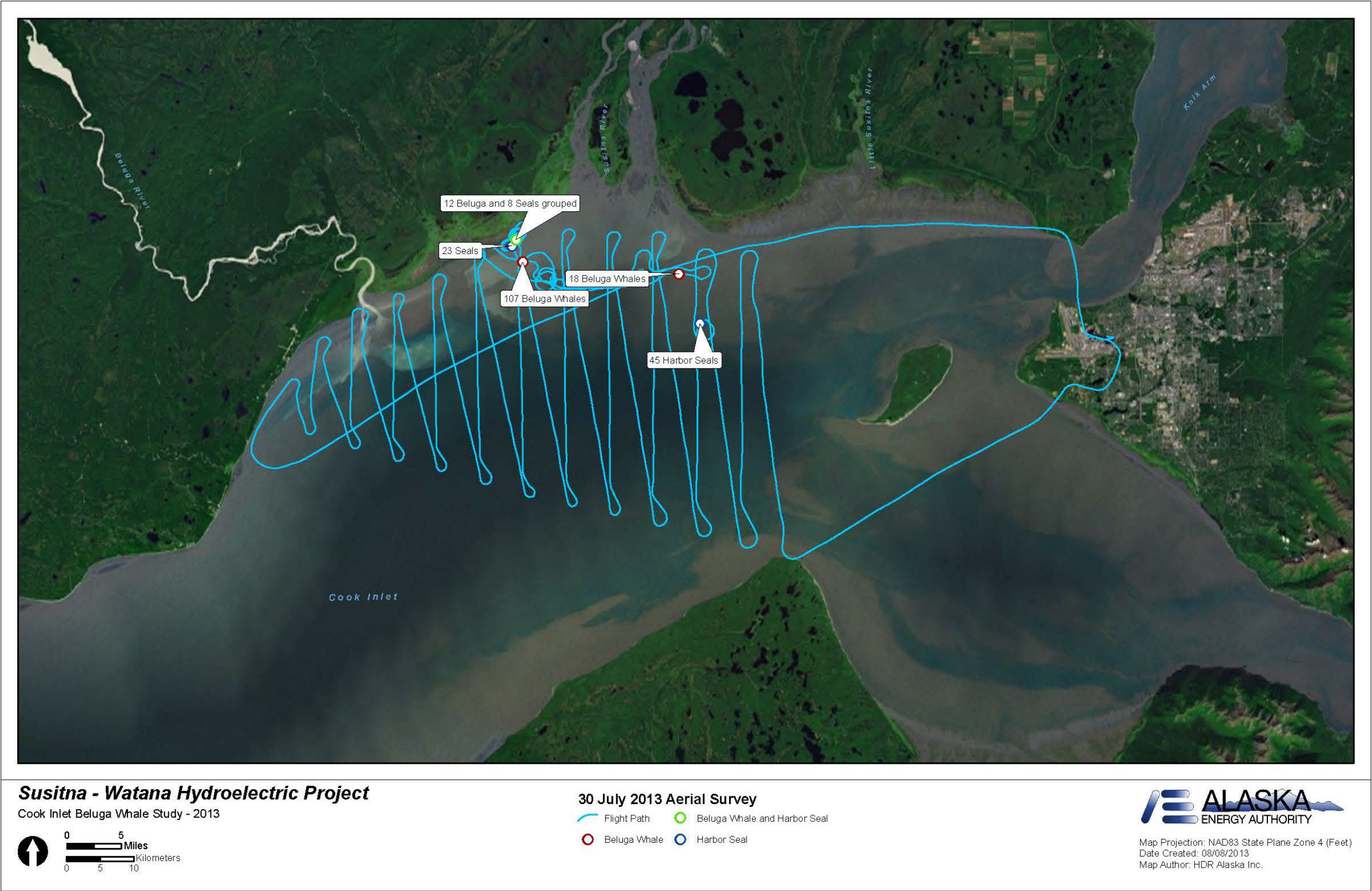


Figure 10. Map of aerial survey flown on July 30, 2013 showing locations of beluga whales and harbor seals.



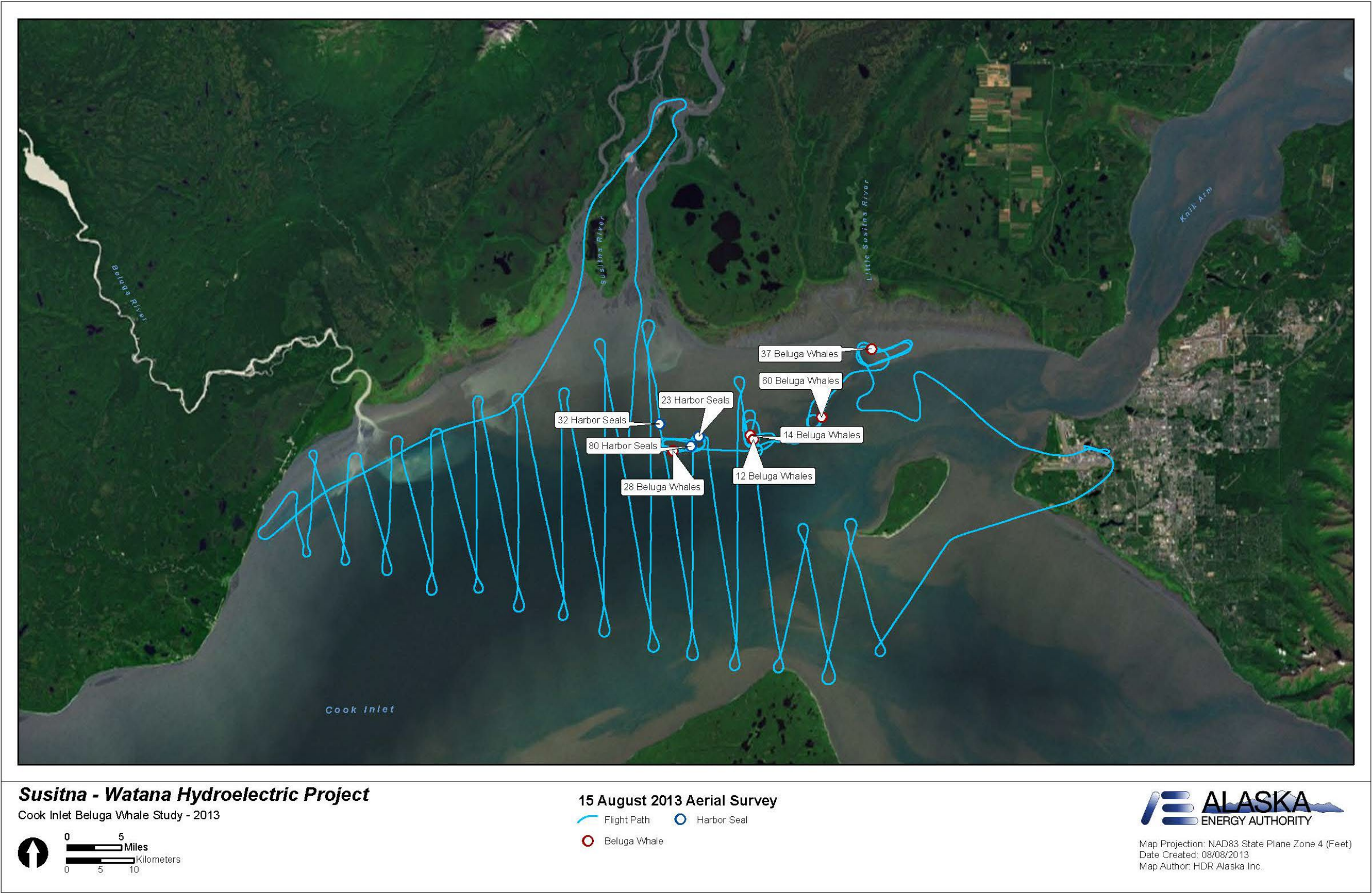


Figure 11. Map of aerial survey flown on August 15, 2013 showing locations of beluga whales and harbor seals.



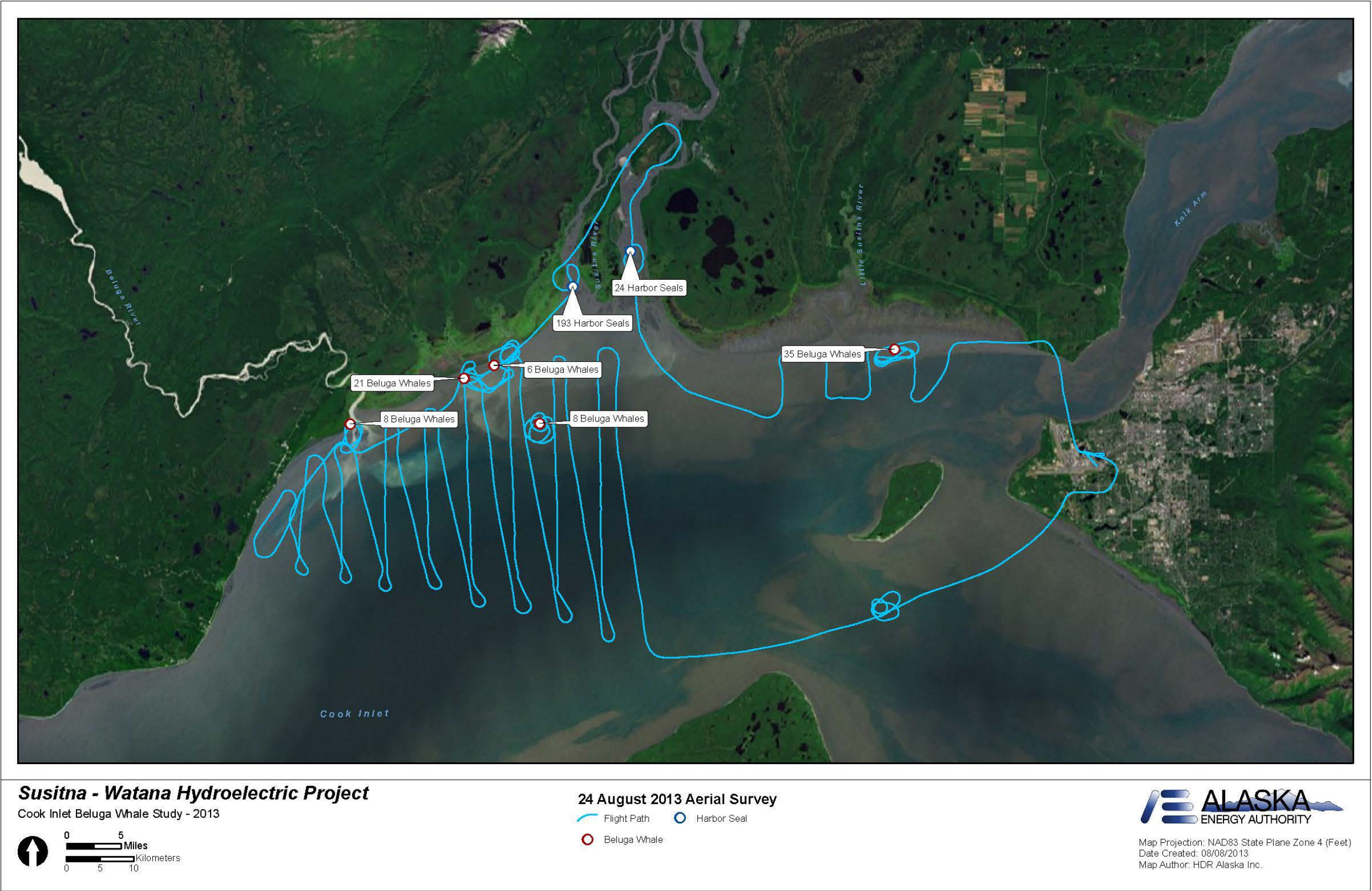


Figure 12. Map of aerial survey flown on August 24, 2013 showing locations of beluga whales and harbor seals.



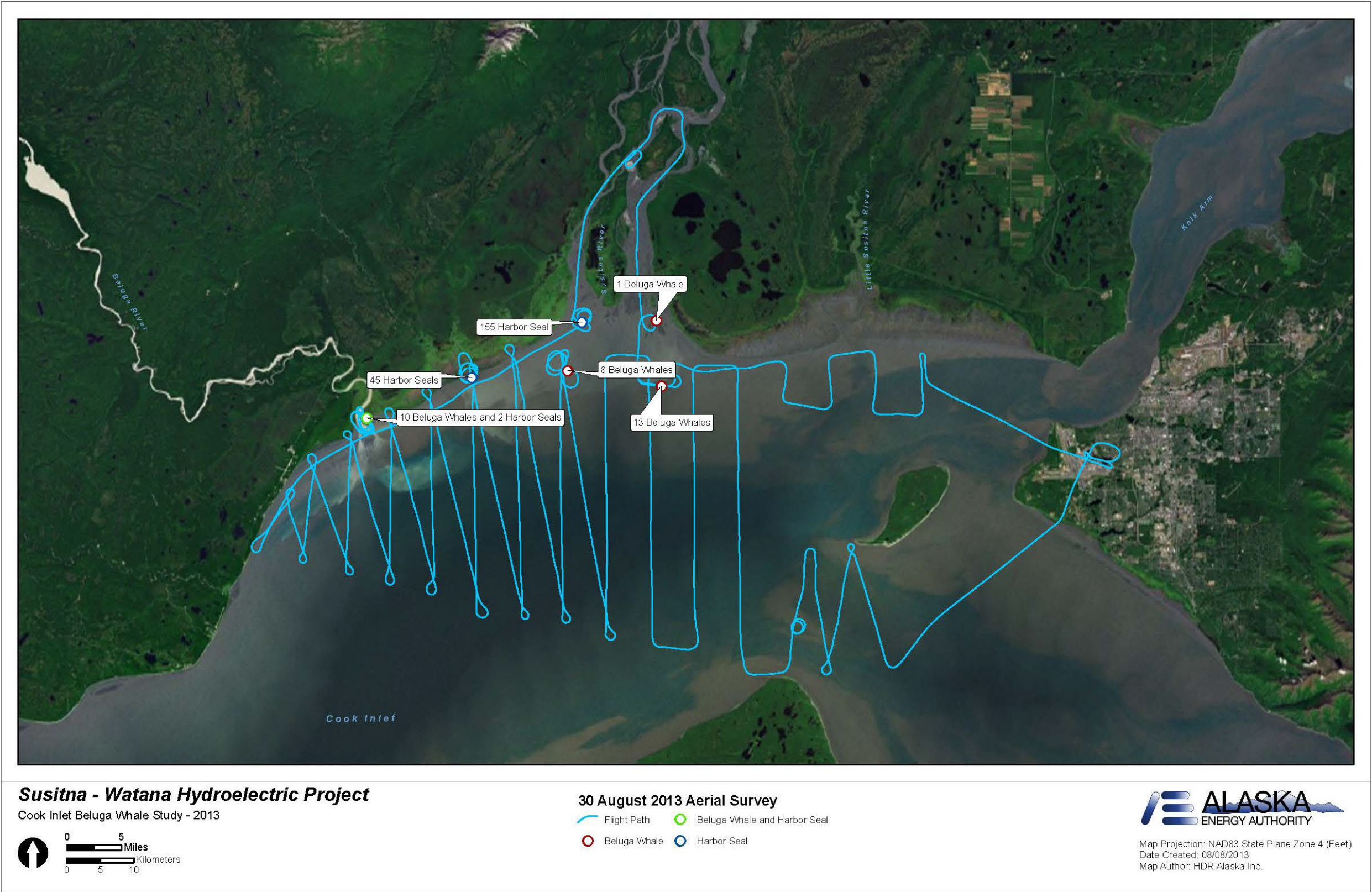


Figure 13. Map of aerial survey flown on August 30, 2013 showing locations of beluga whales and harbor seals.



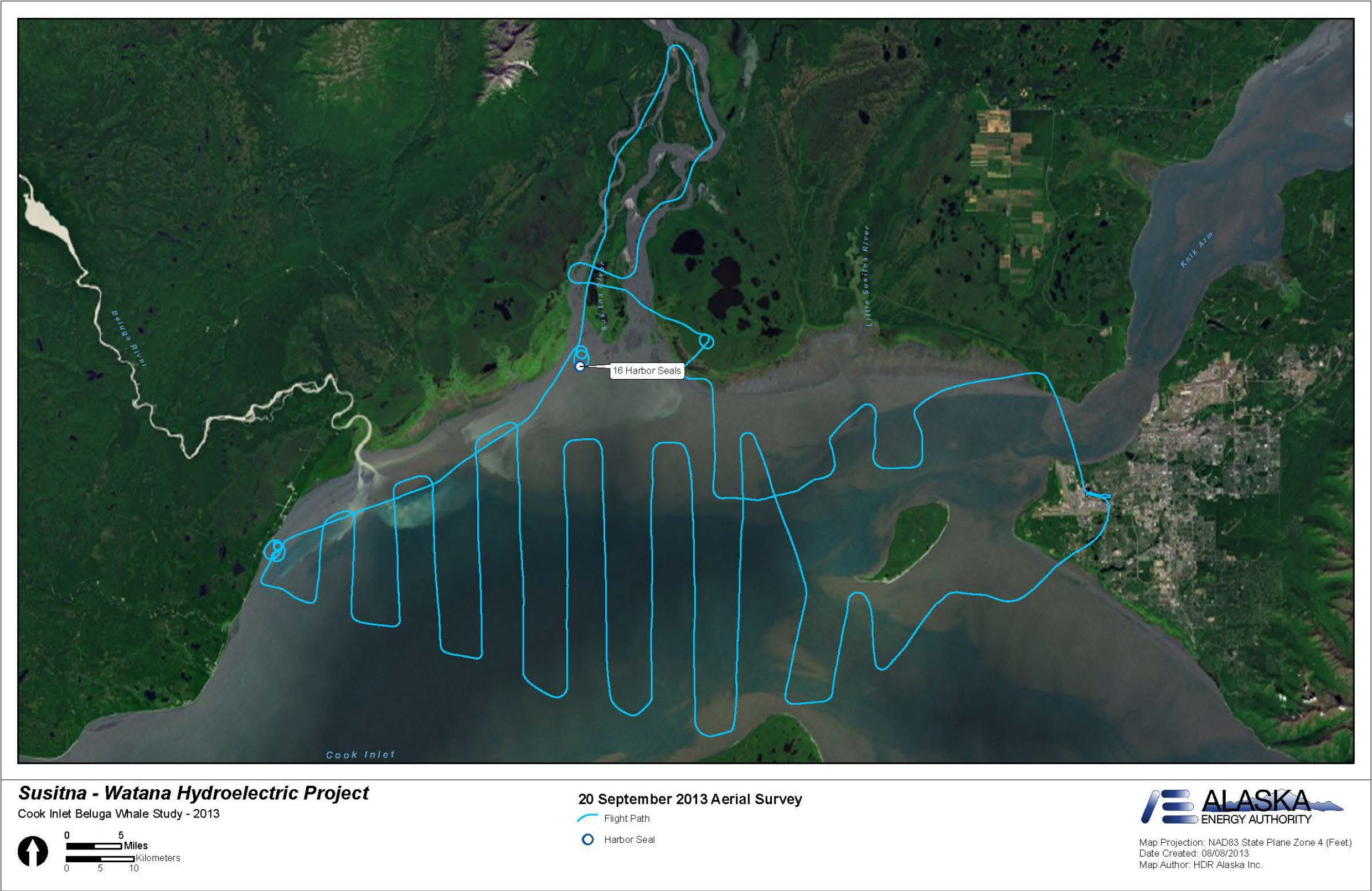


Figure 14. Map of aerial survey flown on September 20, 2013 showing locations of harbor seals. No beluga whales were sighted.



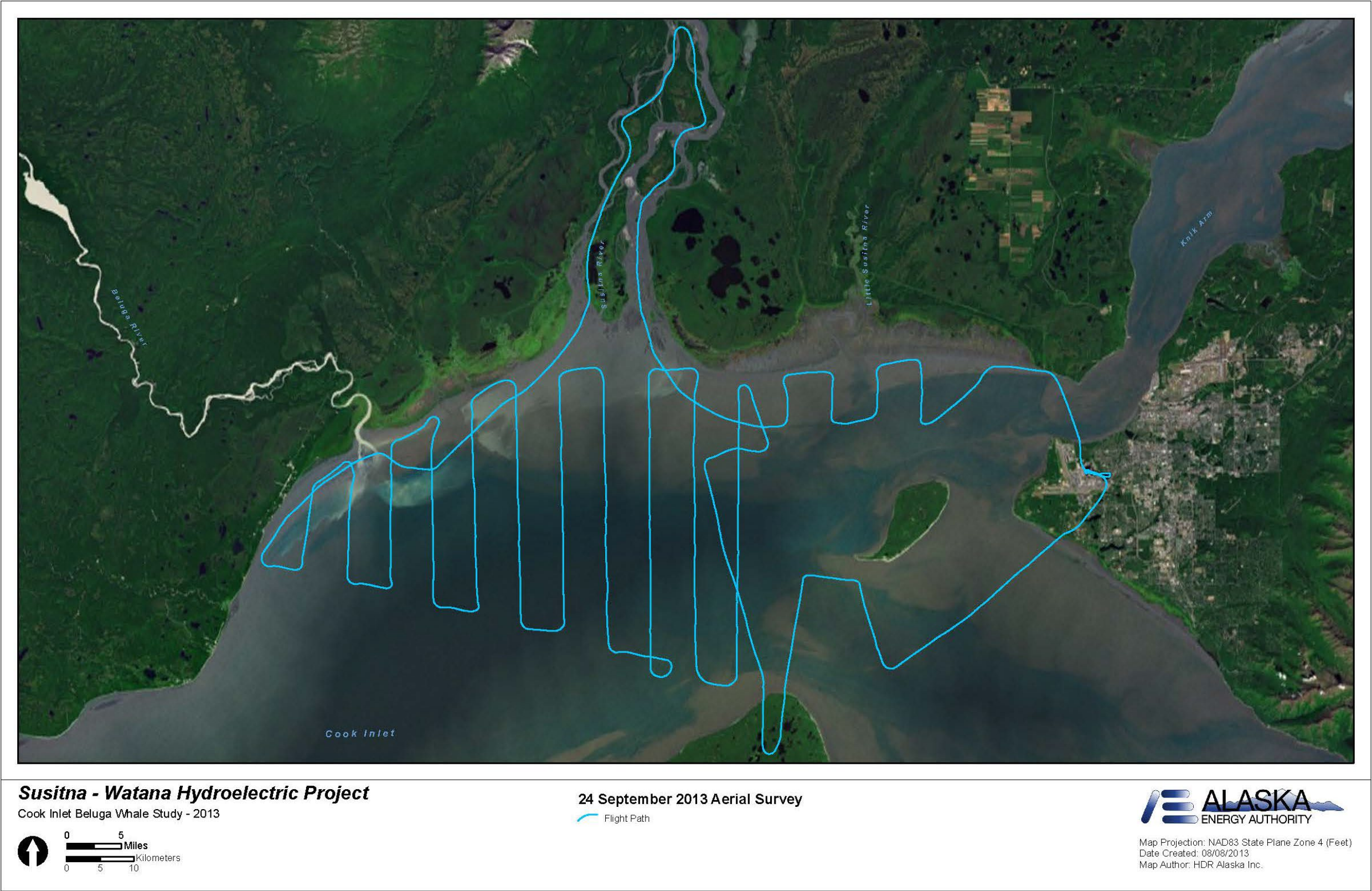


Figure 15. Map of aerial survey flown on September 24, 2013. No beluga whales or harbor seals were sighted.





Figure 16. Map of aerial survey flown on September 30, 2013. No beluga whales or harbor seals were sighted.



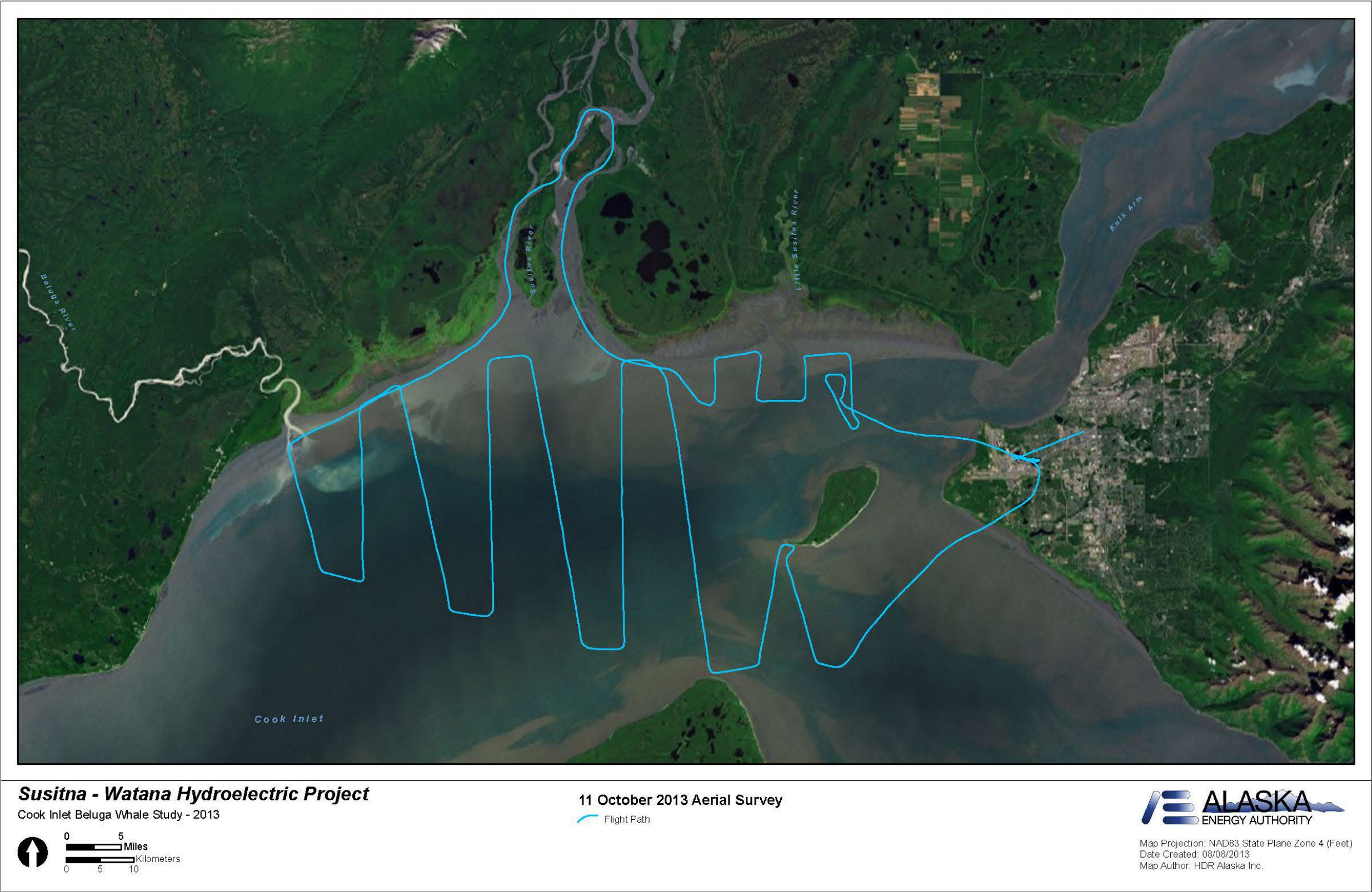


Figure 17. Map of aerial survey flown on October 11, 2013. No beluga whales or harbor seals were sighted.