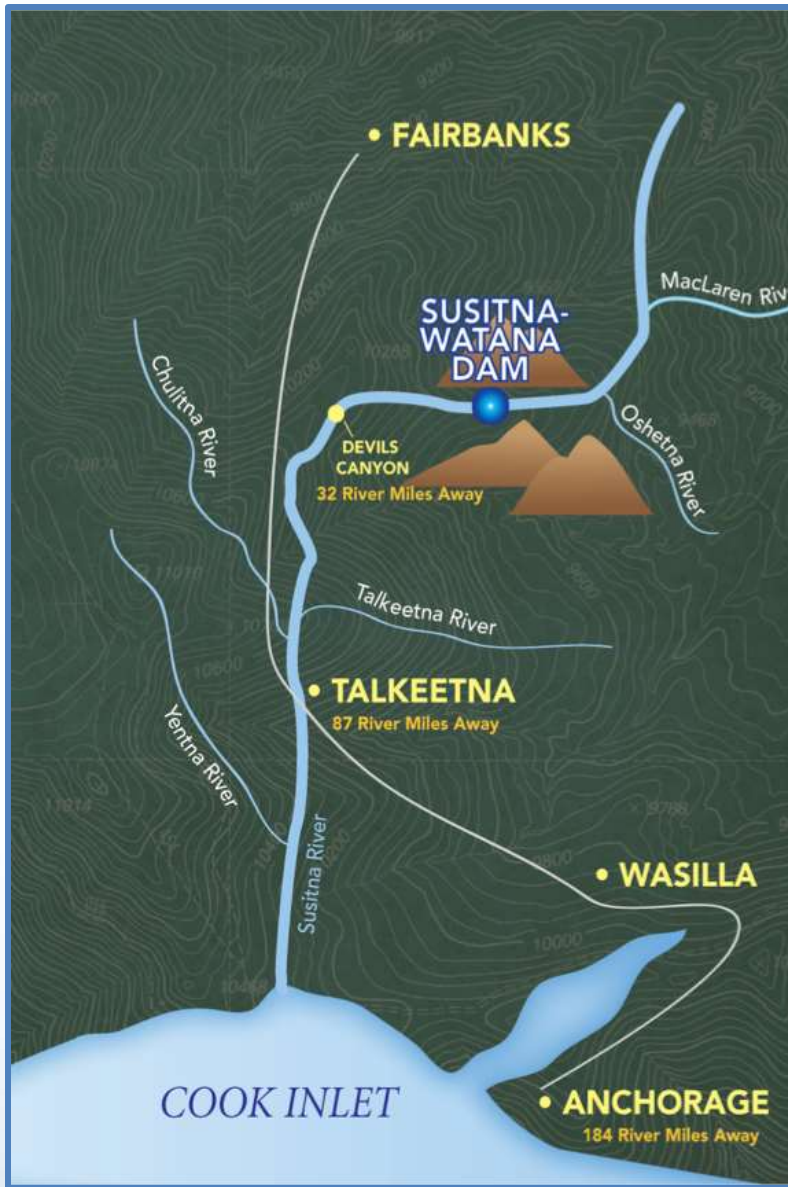


Technical Team
Meeting
*Riverine Modeling
Proof of Concept*
*Riverine Water
Quality Modeling*
FA-128

April 15-17, 2014

Prepared by Tetra Tech



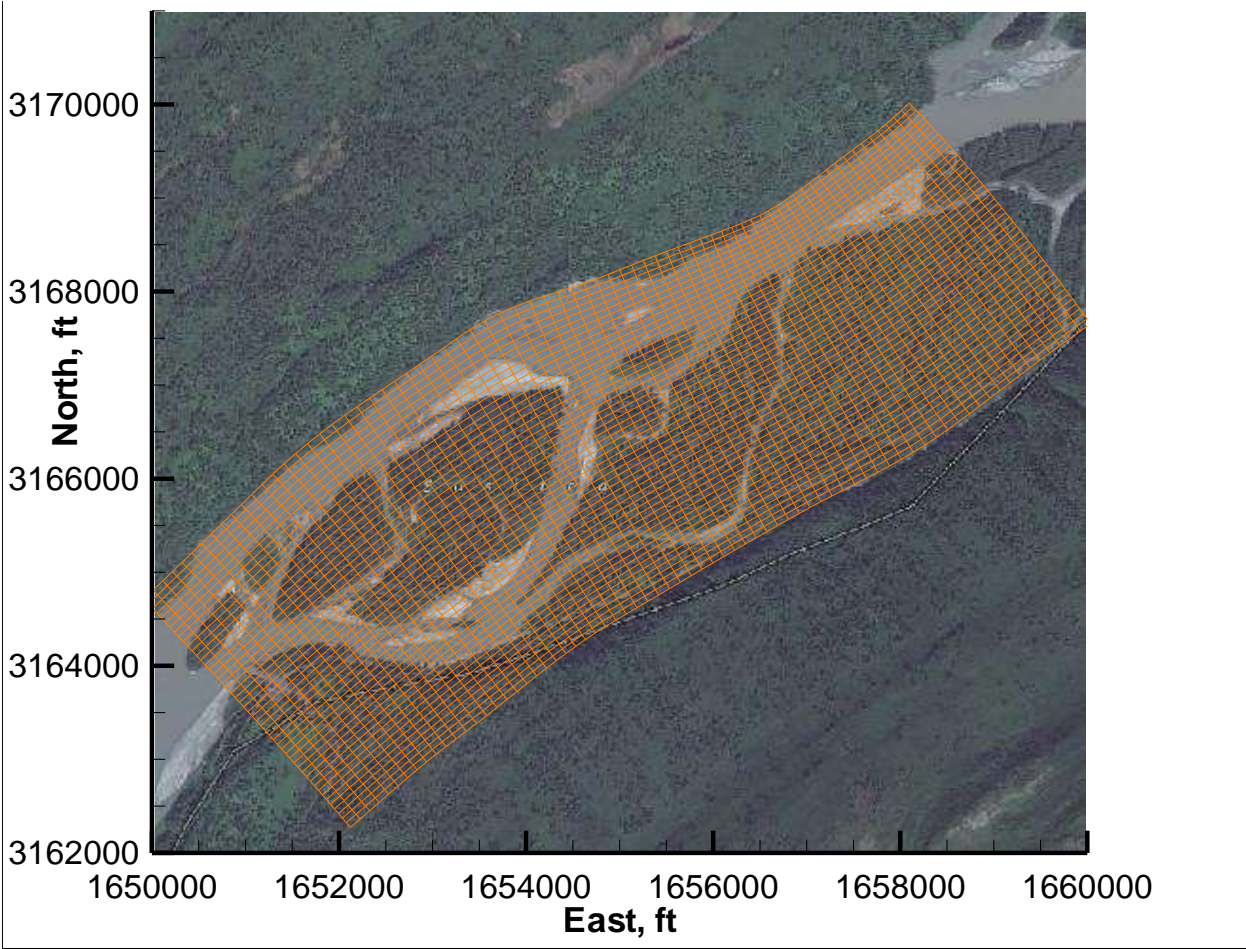

SUSITNA-WATANA HYDRO *Clean, reliable energy for the next 100 years.*

FA-128 (Slough 8A)

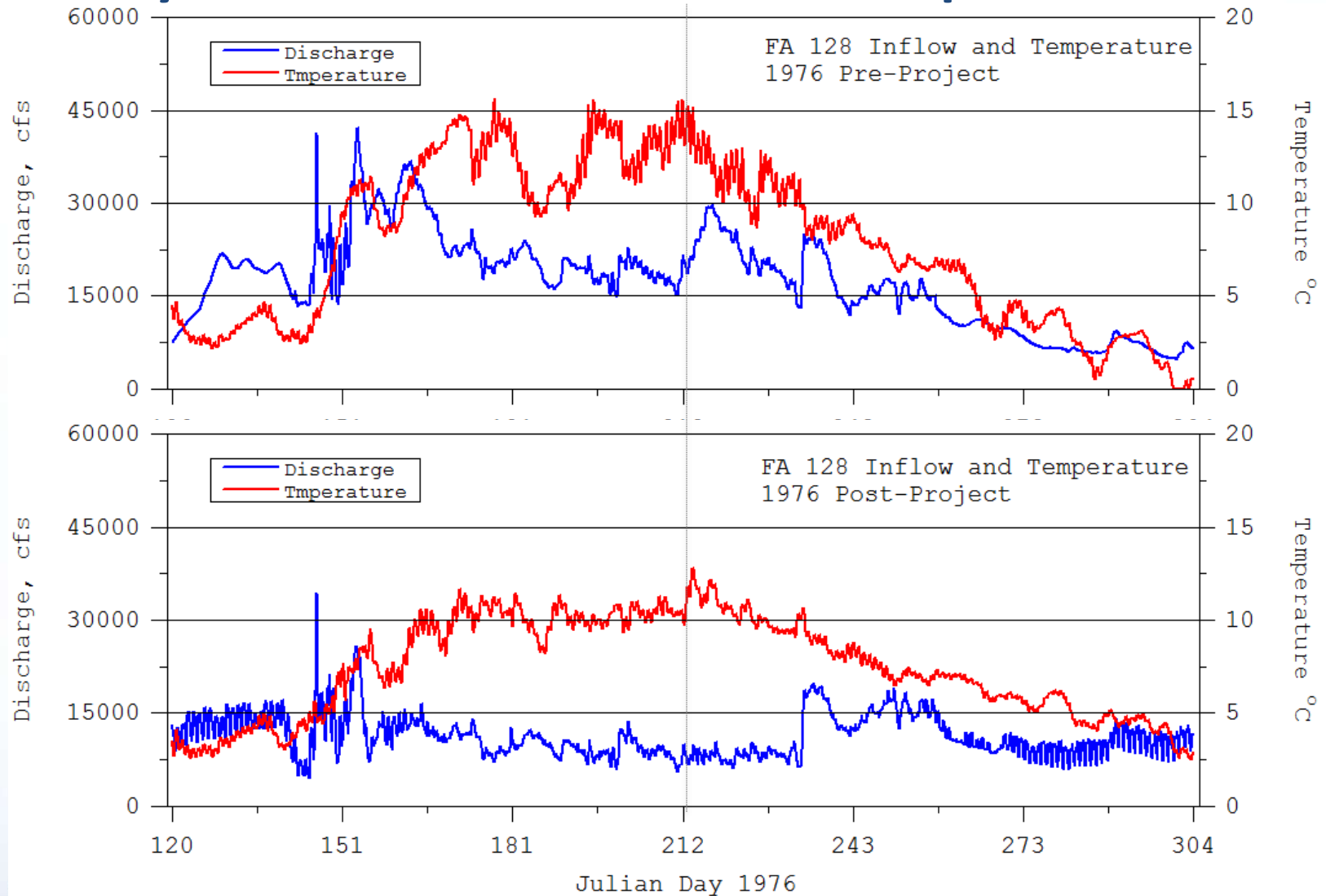
Temperature Simulation

- Finer resolution local model with approximately 8000 cell
- 140 ft longitudinal and 70 ft lateral resolution
- May through October 1976 and 1981 simulation periods
- Pre- and Post-Project conditions (OS-1b)
- Outputs daily average, maximum, and minimum temperature

FA-128 (Slough 8A) Model Grid

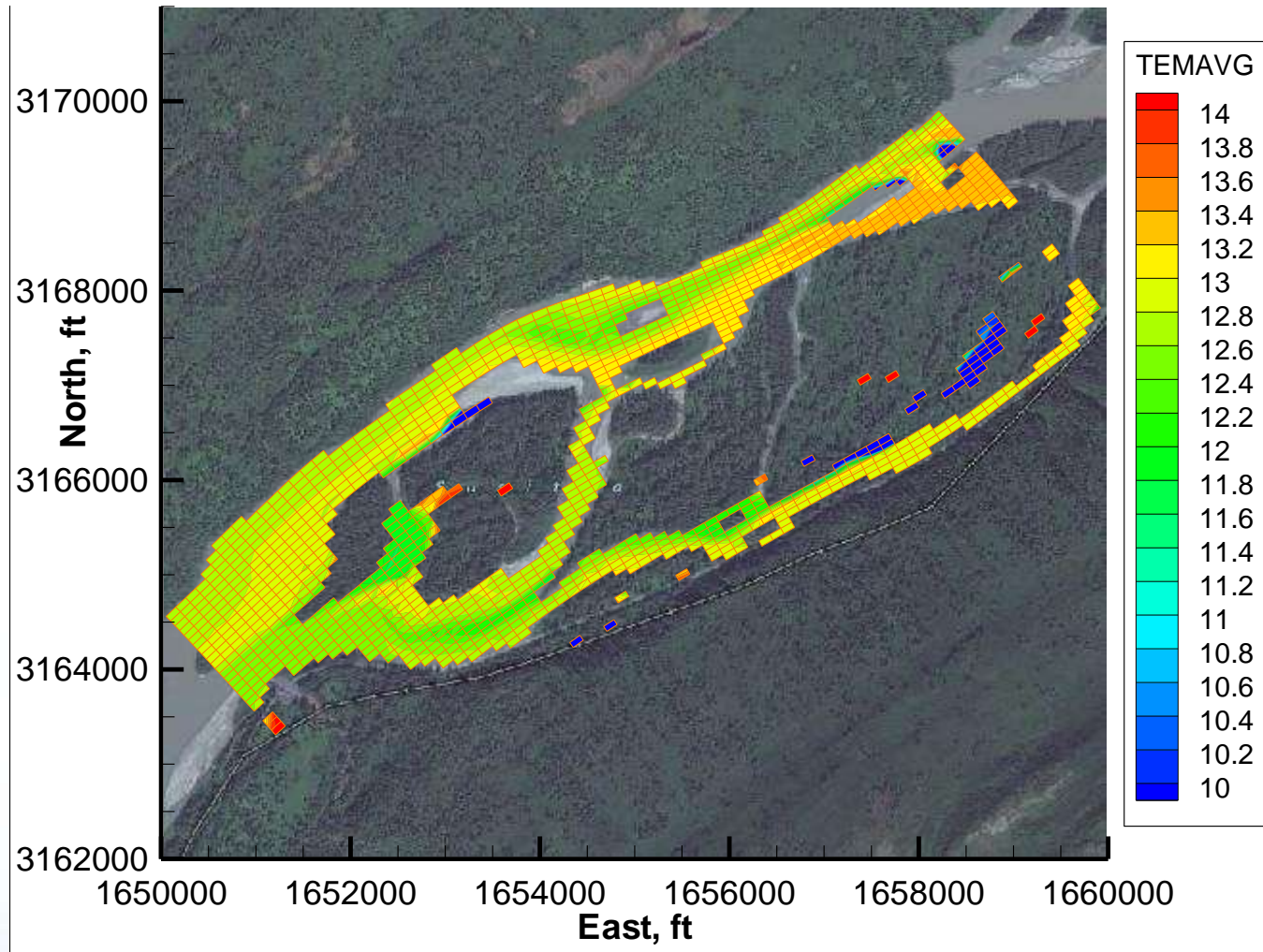


May-October 1976 Temperature

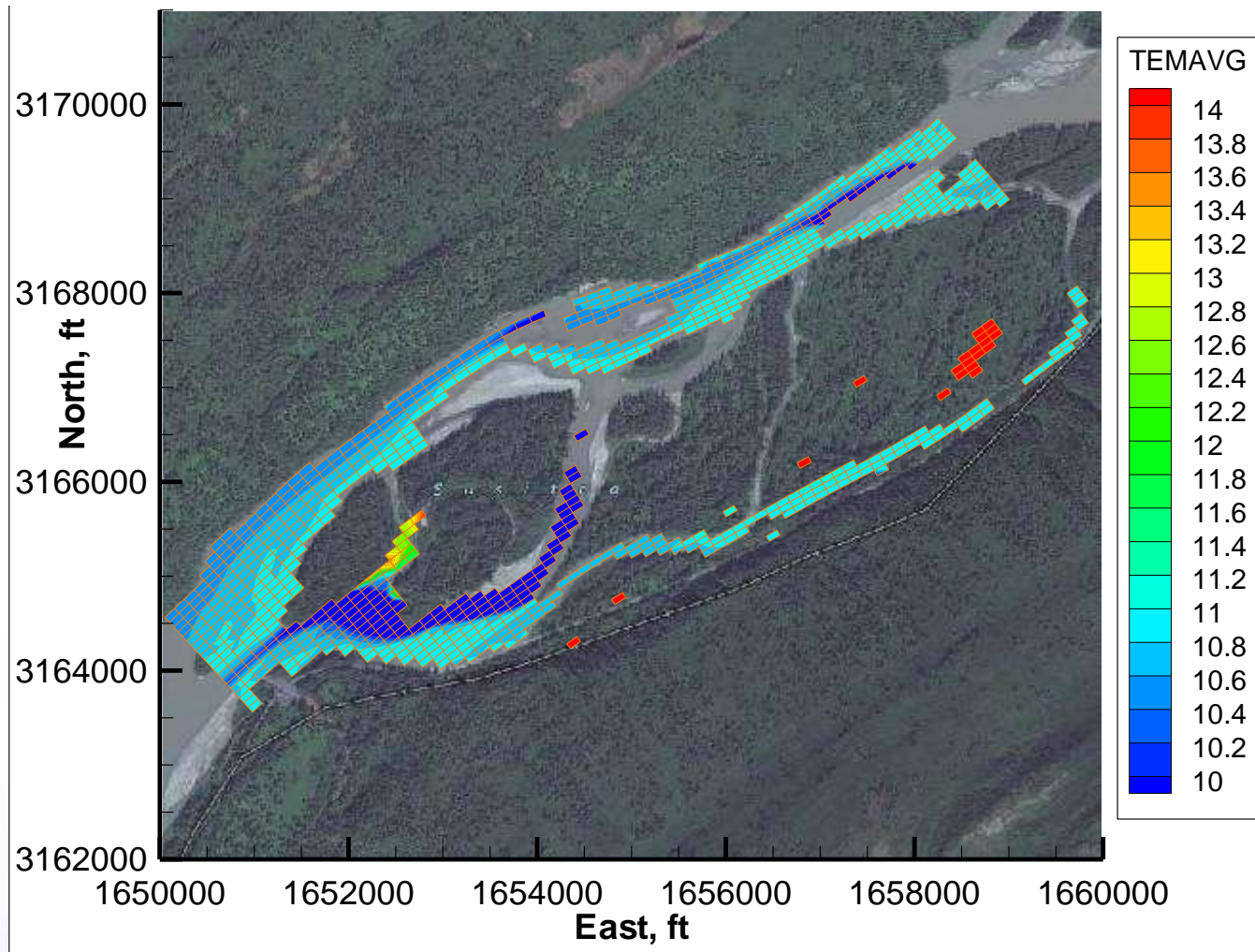


SUSITNA-WATANA HYDRO *Clean, reliable energy for the next 100 years.*

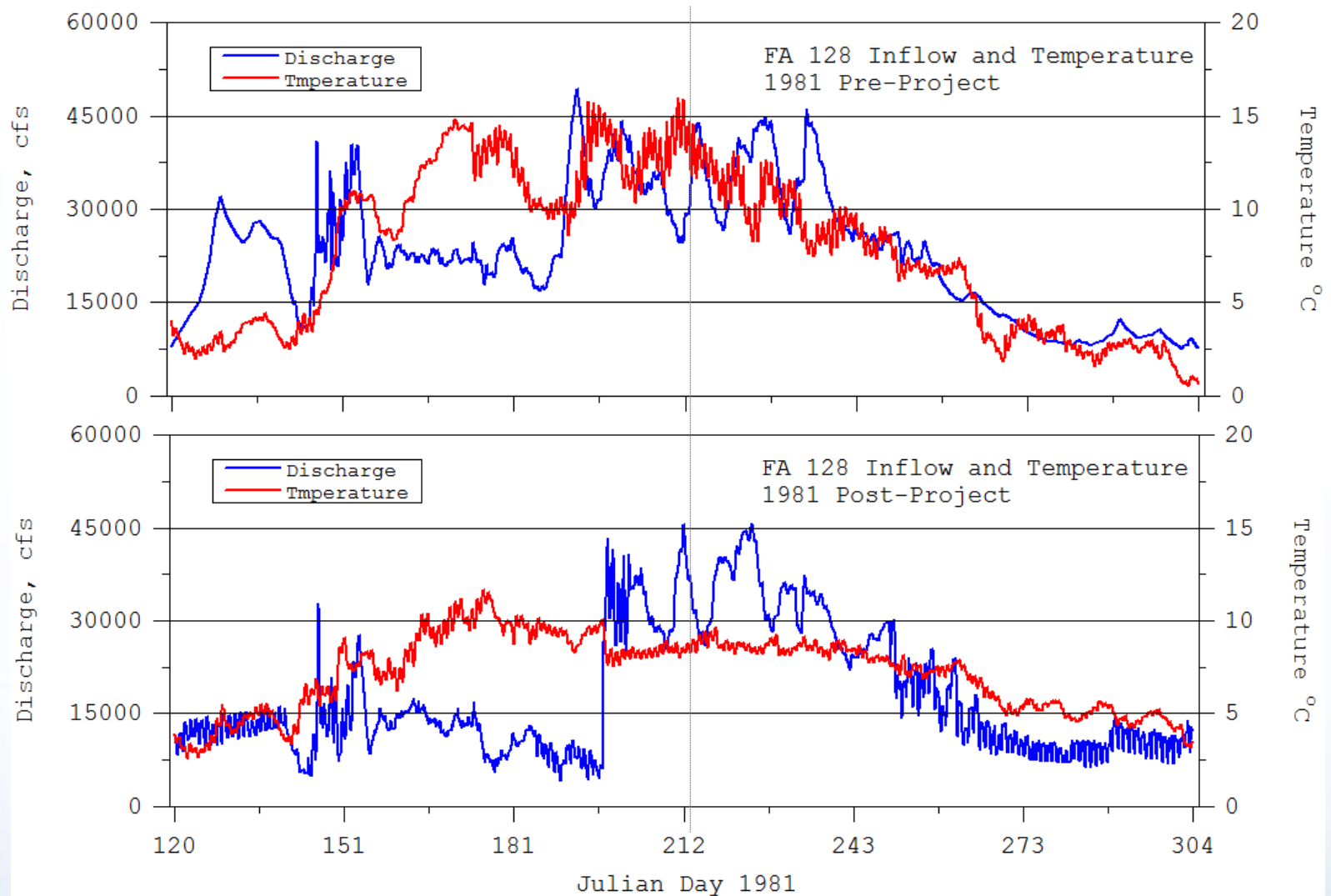
FA-128 (Slough 8A) Pre-Project Daily Average Temperature August 1, 1976 (Julian Day 213)



FA-128 (Slough 8A) Post-Project Daily Average Temperature August 1, 1976 (Julian Day 213)

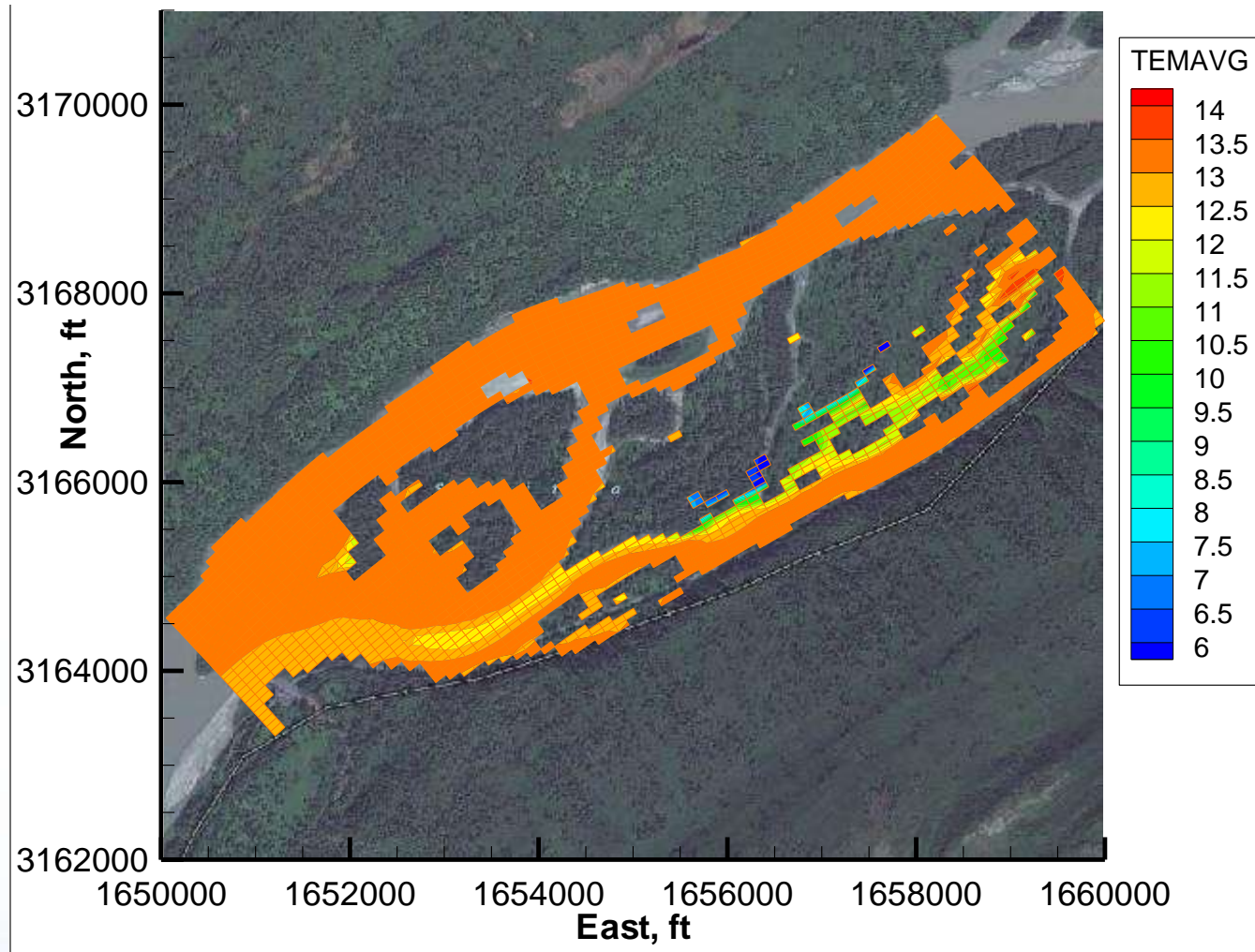


May-October 1981 Temperature



SUSITNA-WATANA HYDRO *Clean, reliable energy for the next 100 years.*

FA-128 (Slough 8A) Pre-Project Daily Average Temperature August 1, 1981 (Julian Day 213)



FA-128 (Slough 8A) Post-Project Daily Average Temperature August 1, 1981 (Julian Day 213)

