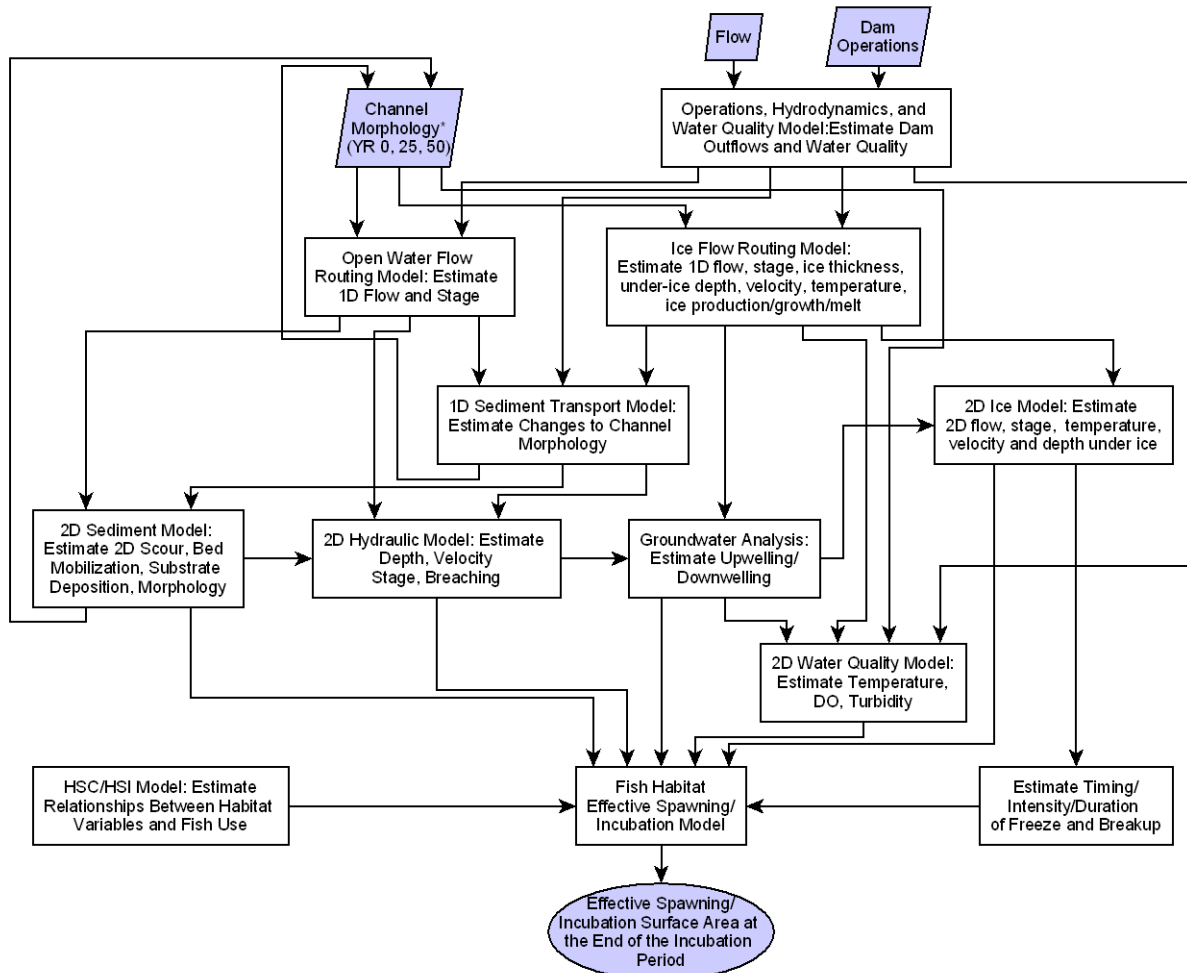
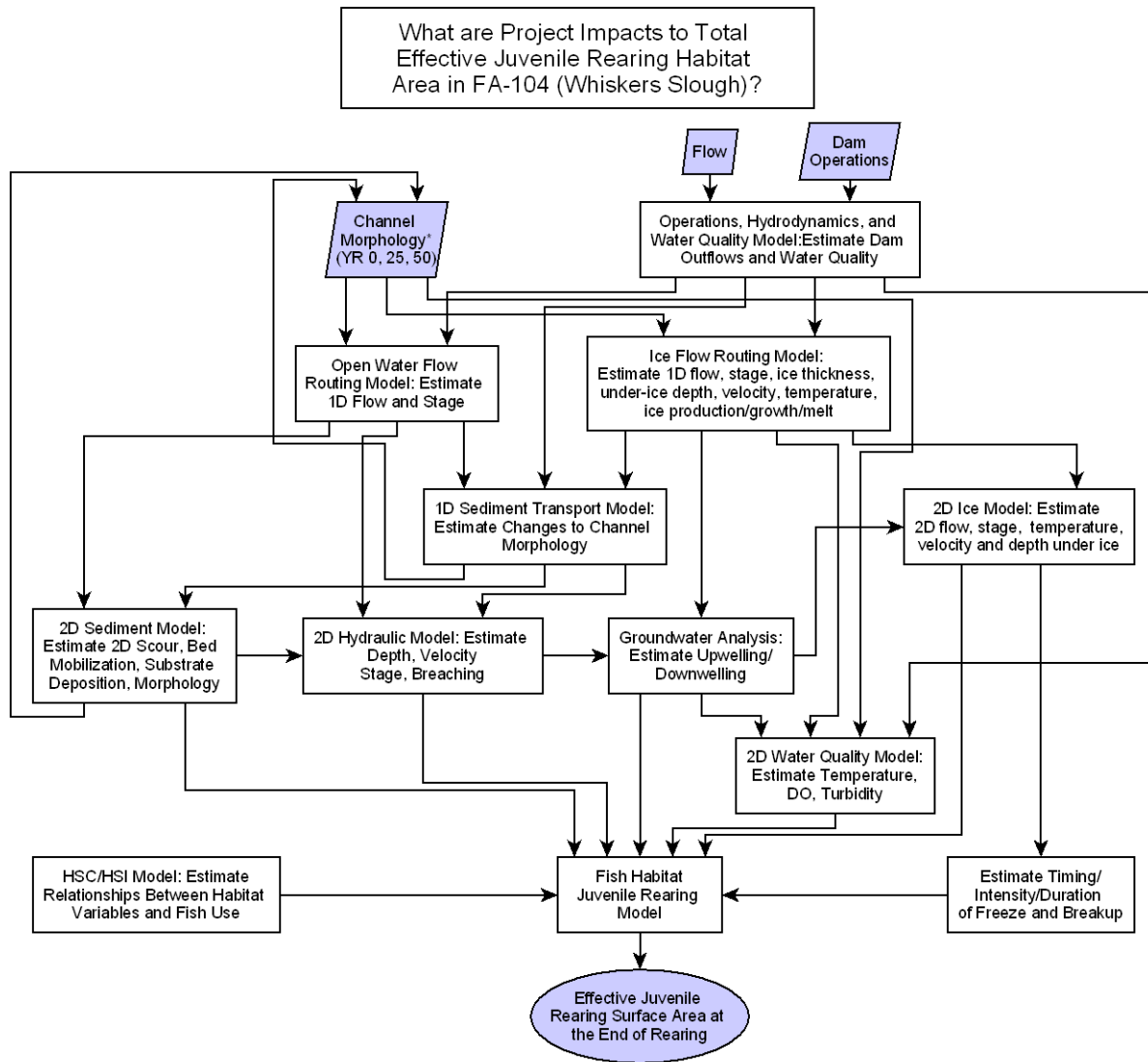


What are Project Impacts to Total Effective Spawning/Incubation/Emergence Habitat Area in FA-104 (Whiskers Slough)?

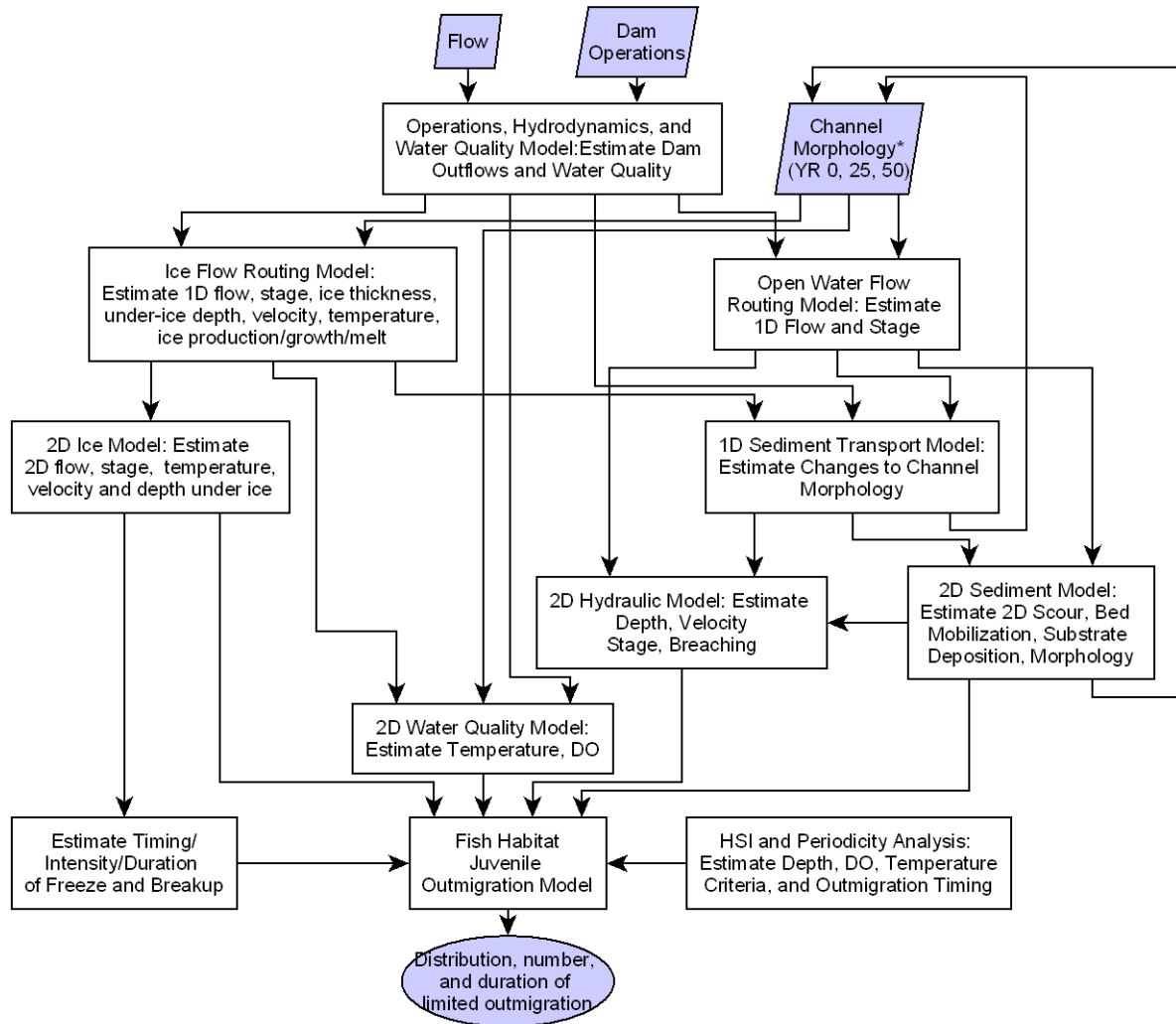


\* Channel morphology in Year 0 is current condition, Year 25 and 50 are dependent on flow and operations assumptions, and are estimated by models.



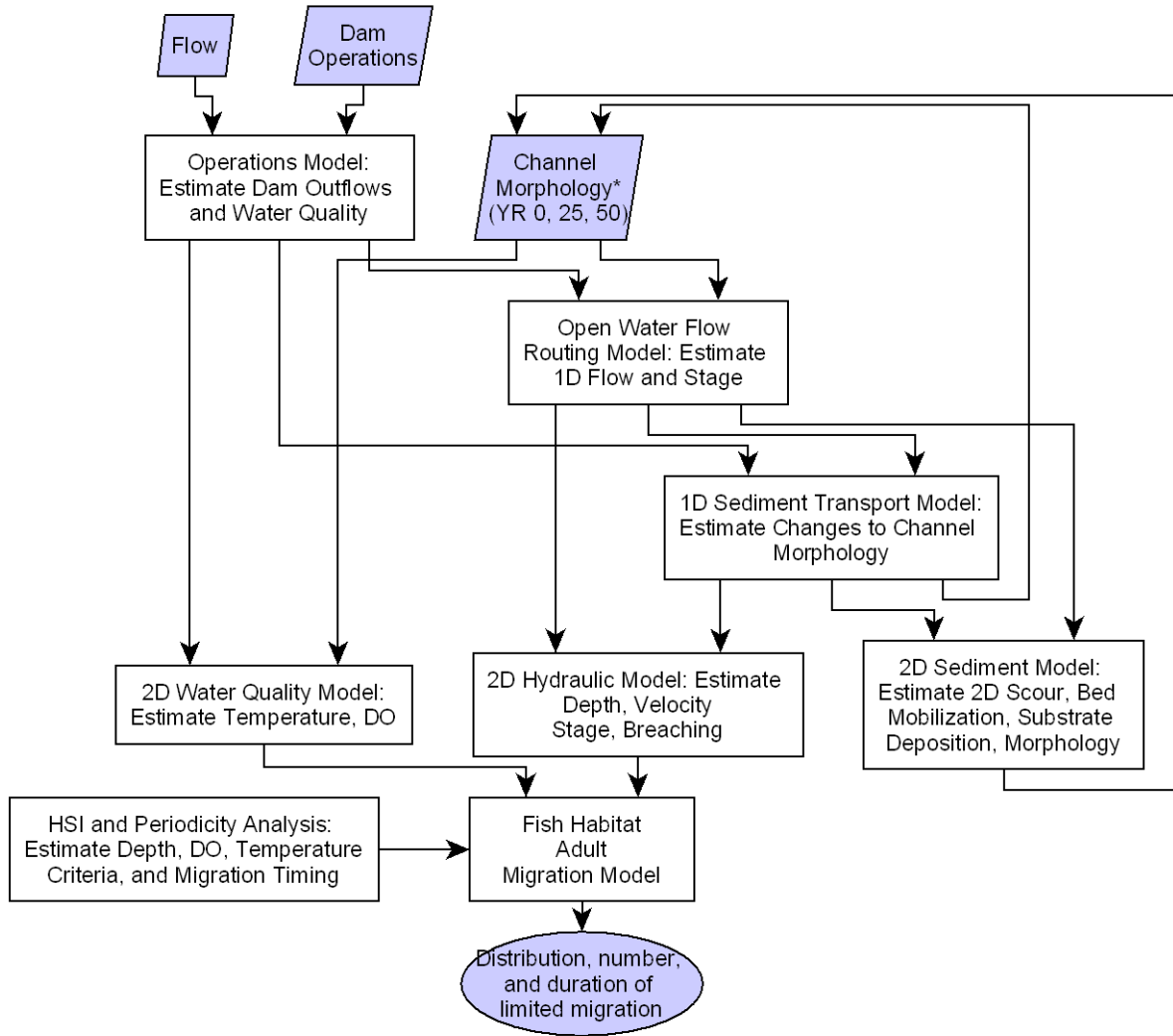
\* Channel morphology in Year 0 is current condition, Year 25 and 50 are dependent on flow and operations assumptions, and are estimated by models.

What are Project Impacts to Juvenile Passage out of Lateral Habitats (sloughs, tributaries, side channels) During Outmigration in FA-104 (Whiskers Slough)?



\* Channel morphology in Year 0 is current condition, Year 25 and 50 are dependent on flow and operations assumptions, and are estimated by models.

What are Project Impacts to Adult Passage Into Lateral Habitats (sloughs, tributaries, side channels) During Migration in FA-104 (Whiskers Slough)?



\* Channel morphology in Year 0 is current condition, Year 25 and 50 are dependent on flow and operations assumptions, and are estimated by models.

