



Aesthetic Resources

Study 12.6

Scenery and Soundscape
Study Status
Plans for 2nd Study Year
May 1, 2014



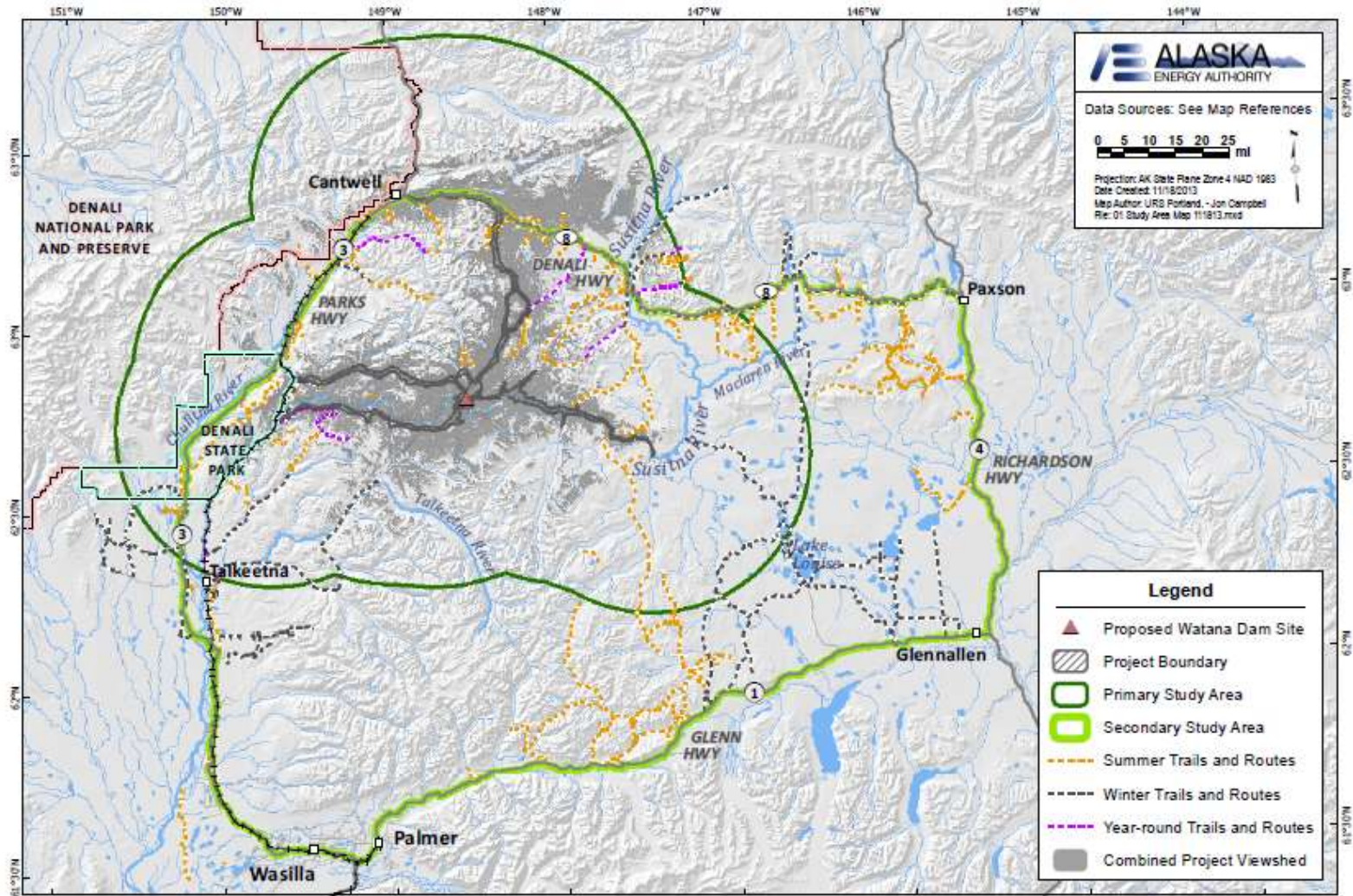
Overview

- Progress to Date
- Variances
- Next Steps

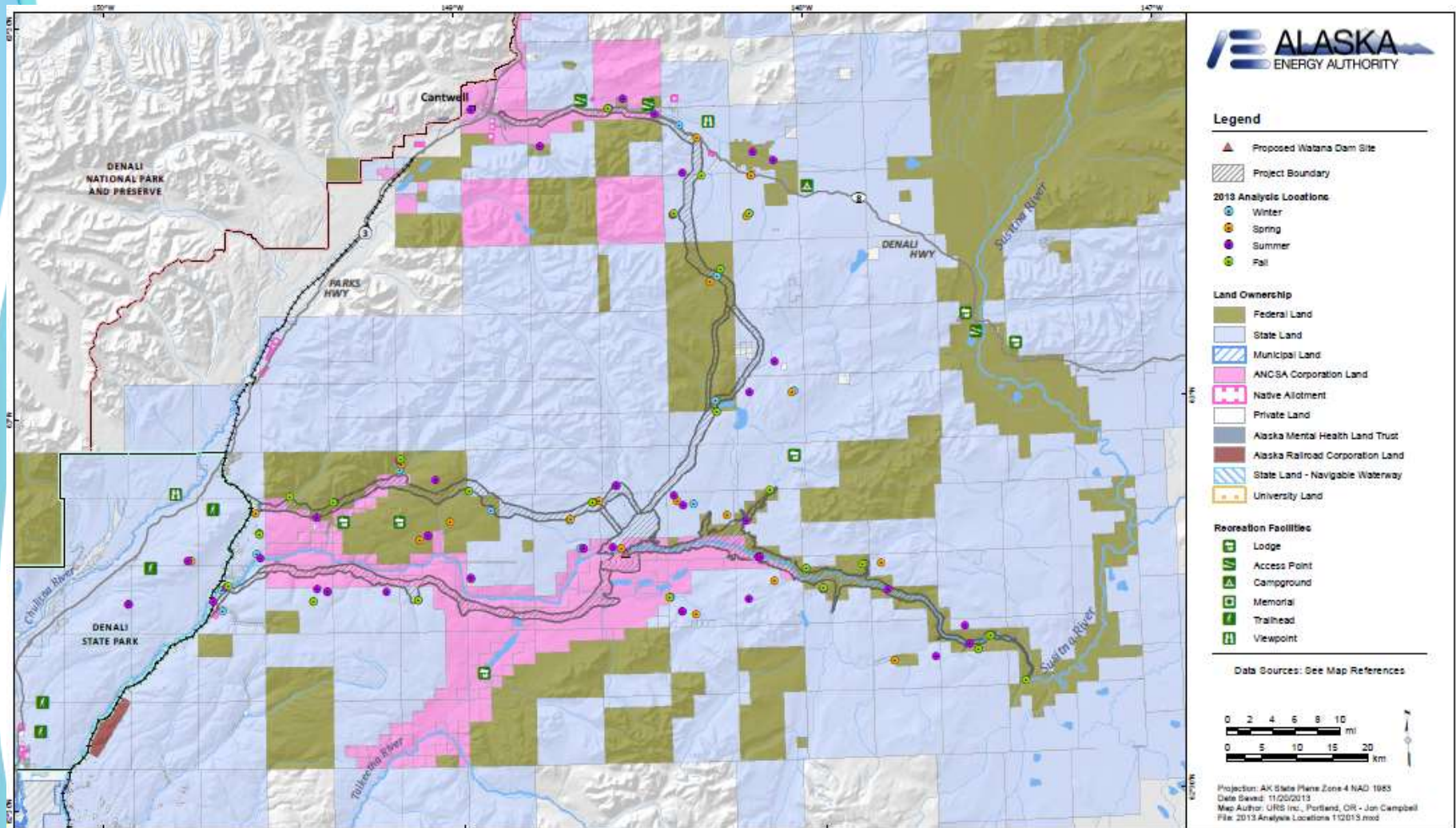
Progress To Date - Visuals

- Viewshed Modeling
- Ongoing Interdisciplinary Coordination
- Identification of Analysis Locations
- Baseline Data Collection (non-CIRWG lands)
- Photography and Panoramic Development
- Comprehensive Plan Review
- Data Processing

Aesthetic Resources Study Area



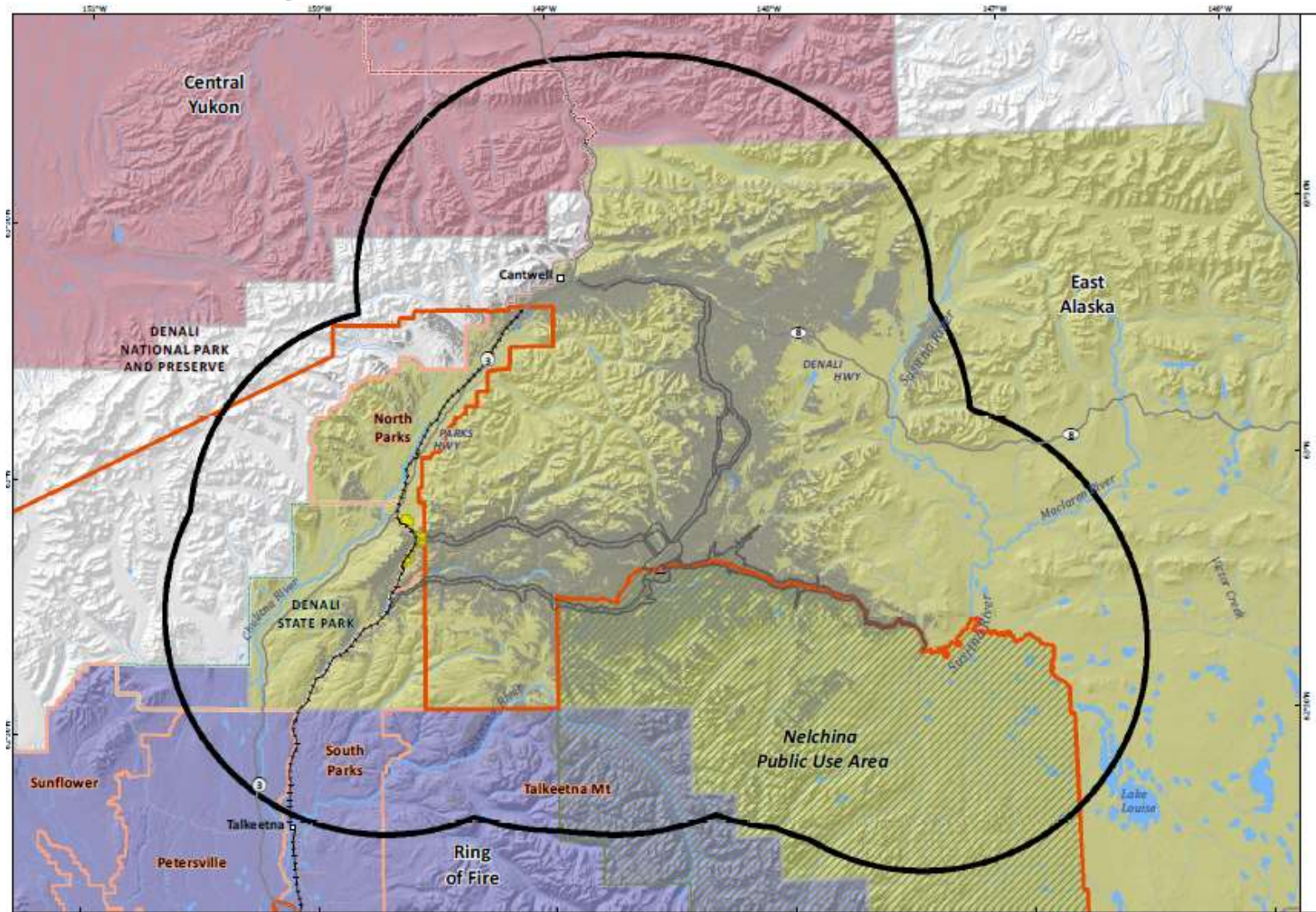
Analysis Locations (2013)



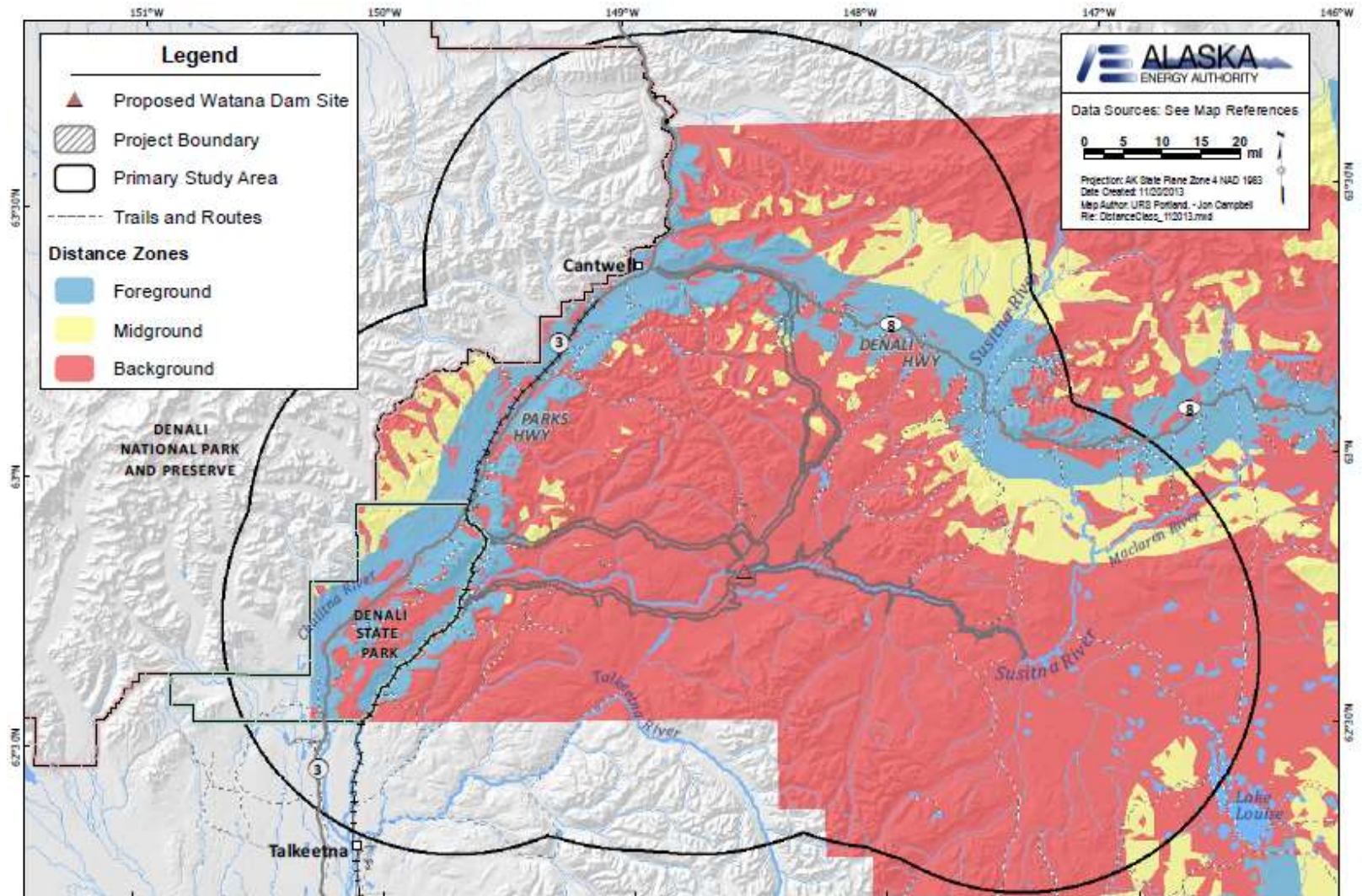
Photography and Panoramics



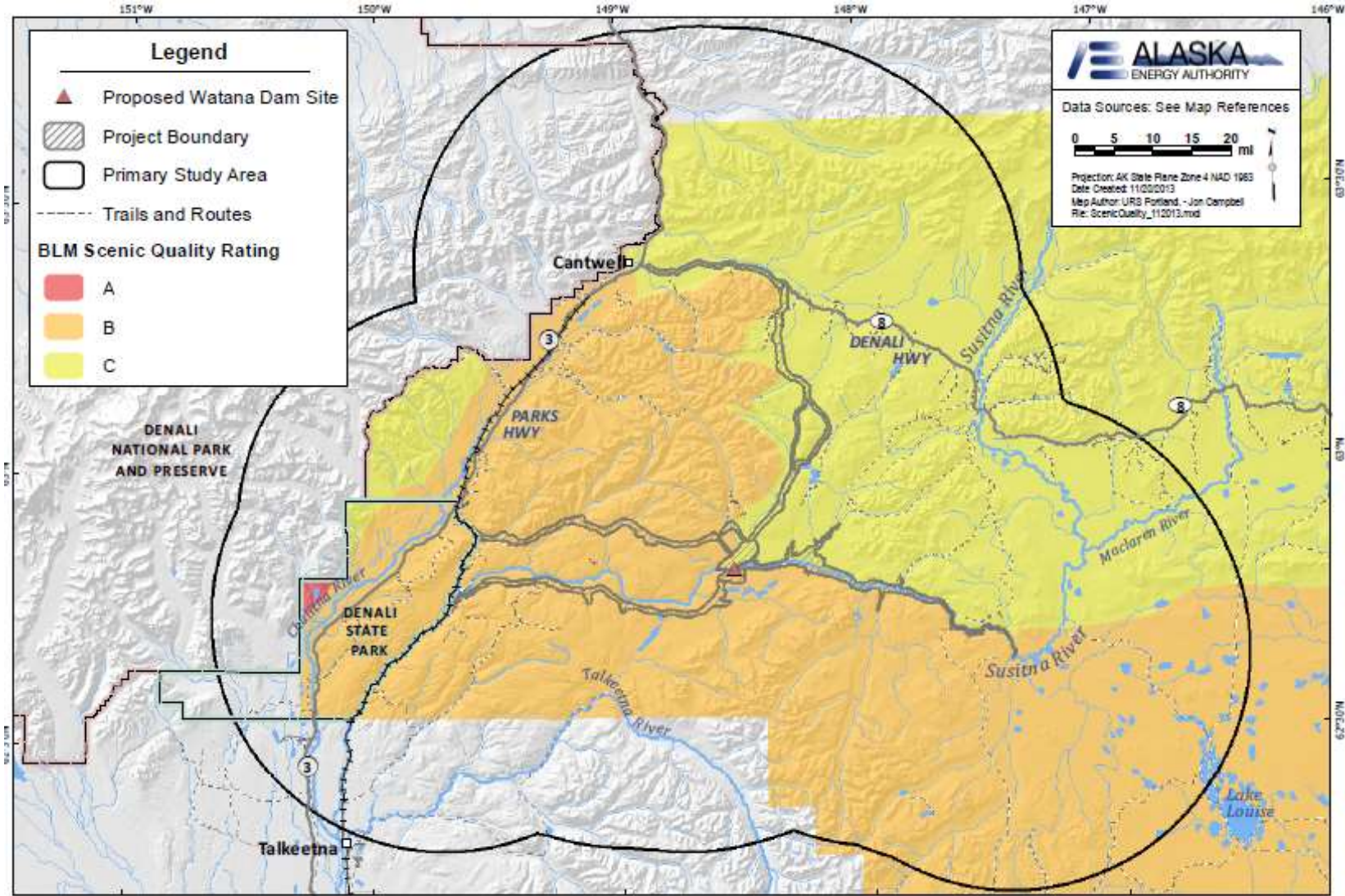
Comprehensive Plan Review



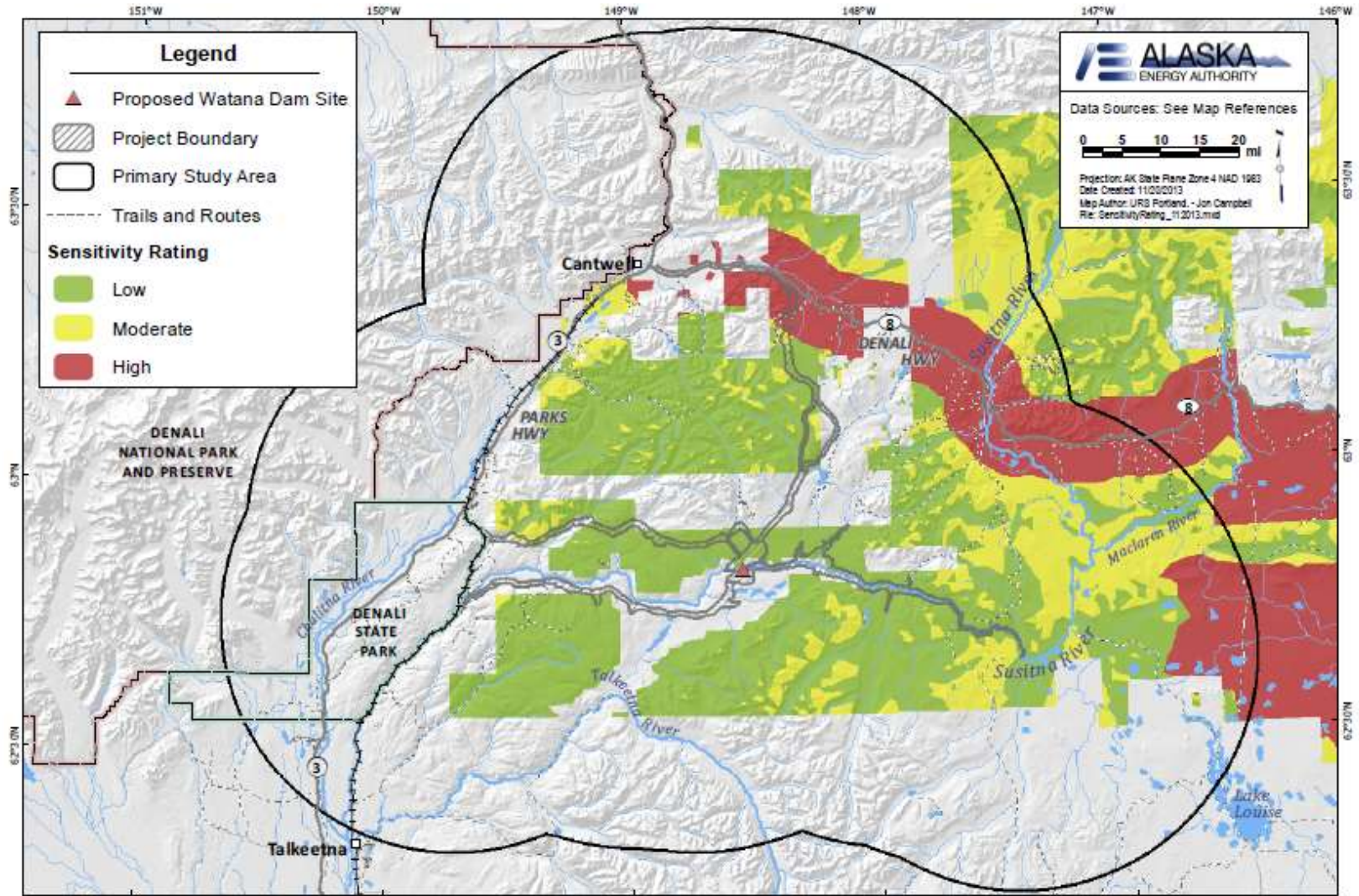
Visual Distance Zones – BLM East Alaska RMP



Scenic Quality Rating – BLM East Alaska RMP



Scenic Quality Rating – BLM East Alaska RMP



Variations - Visual

- No variance in methods to collected baseline data occurred
- Analysis goals identified in the RSP were achieved
- Data gaps pertaining to the following baseline data collection will be address during the 2nd study year :
 - Railroad lands
 - CIRWG-owned lands
 - Locations triggered by interdisciplinary coordination
 - Night near proposed facility

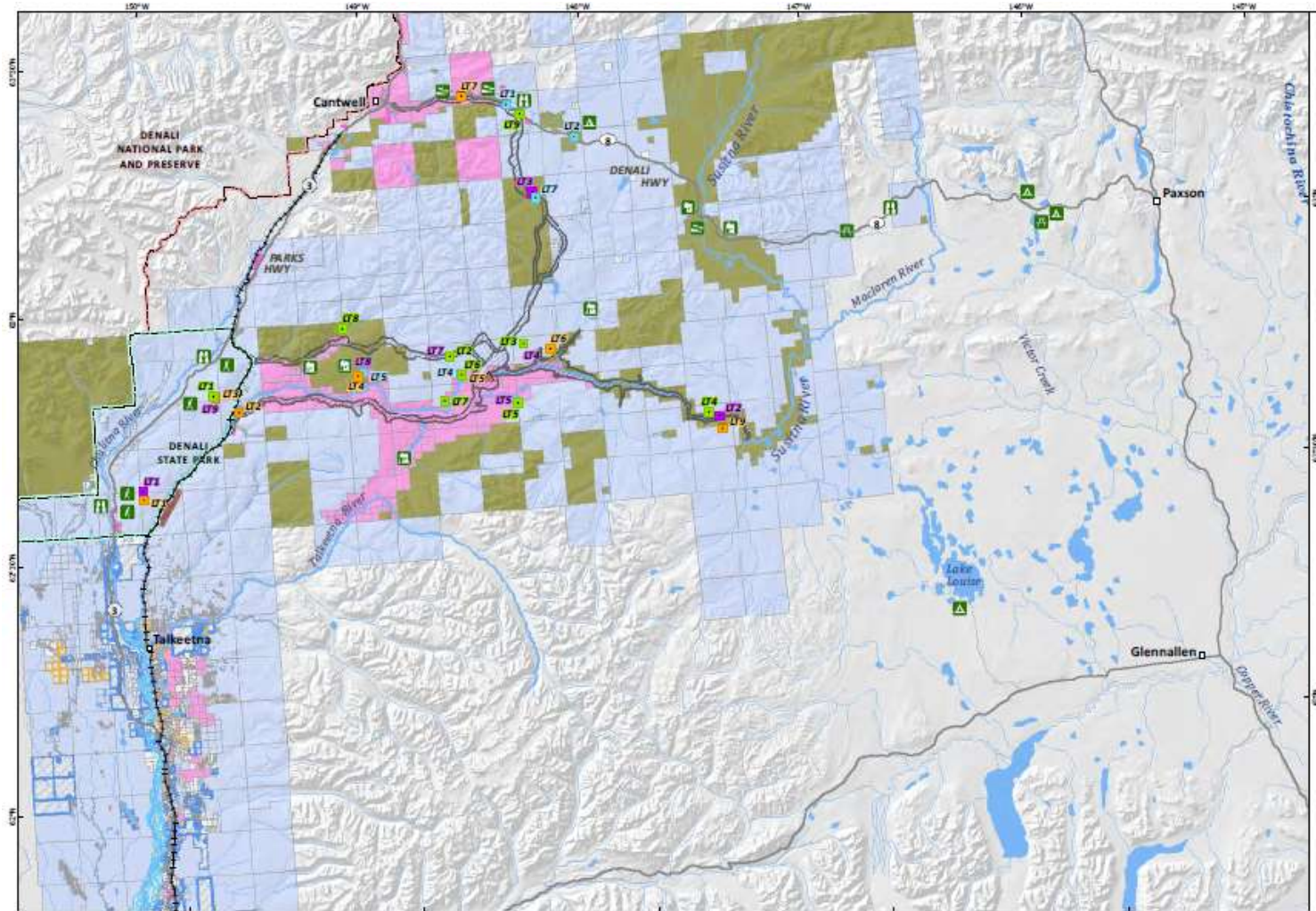
Next Steps

- Refine viewshed models as needed
- Assess Visual Sensitivity
 - Survey Data
 - Focus Groups
- Interdisciplinary Coordination
- Baseline Data Collection (data gaps)
- Photosimulation Development
- Analysis
- Study Report

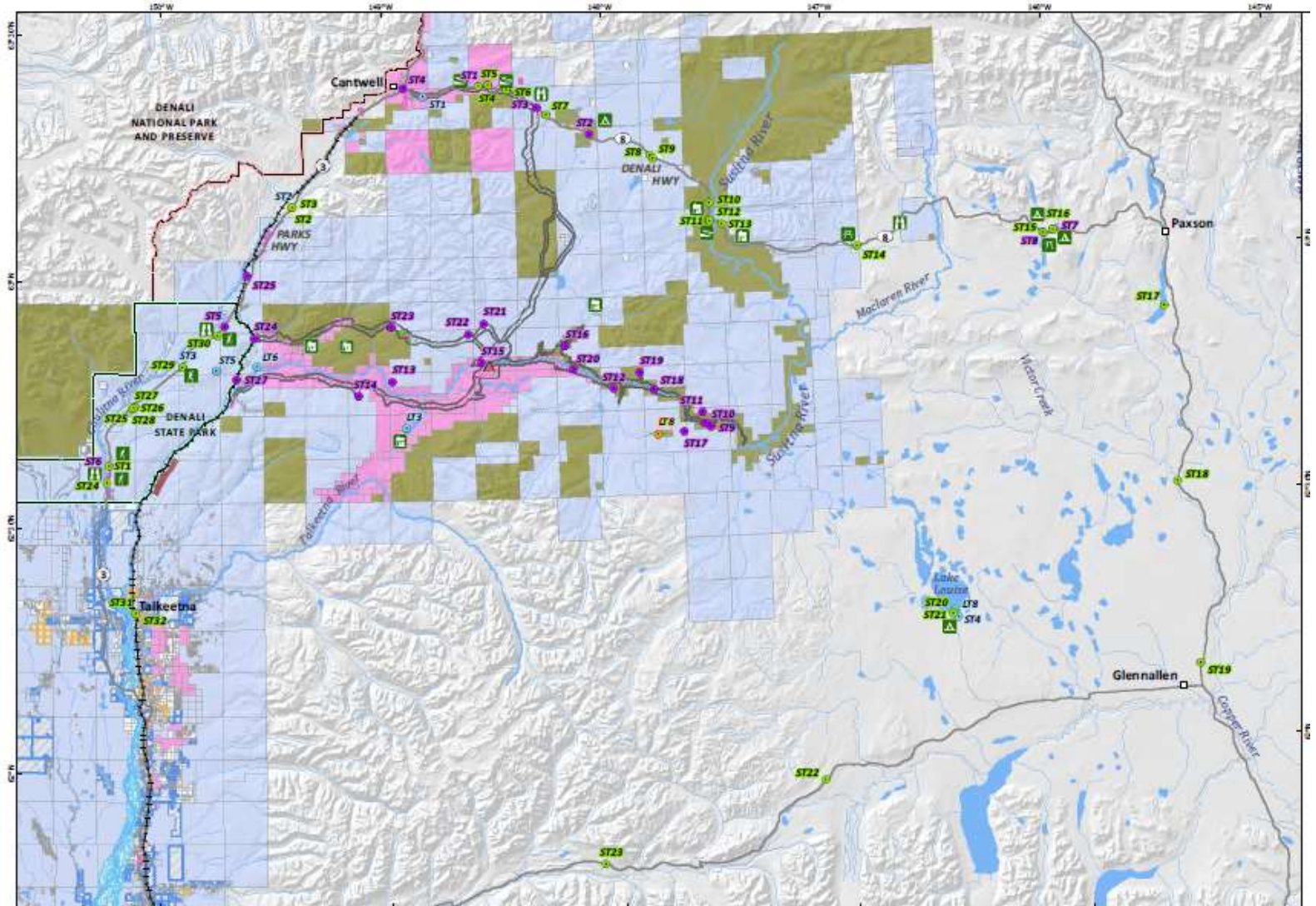
Progress To Date - Soundscape

- Identification of Analysis Locations
- Baseline Data Collection (non-CIRWG lands)
- Data Processing

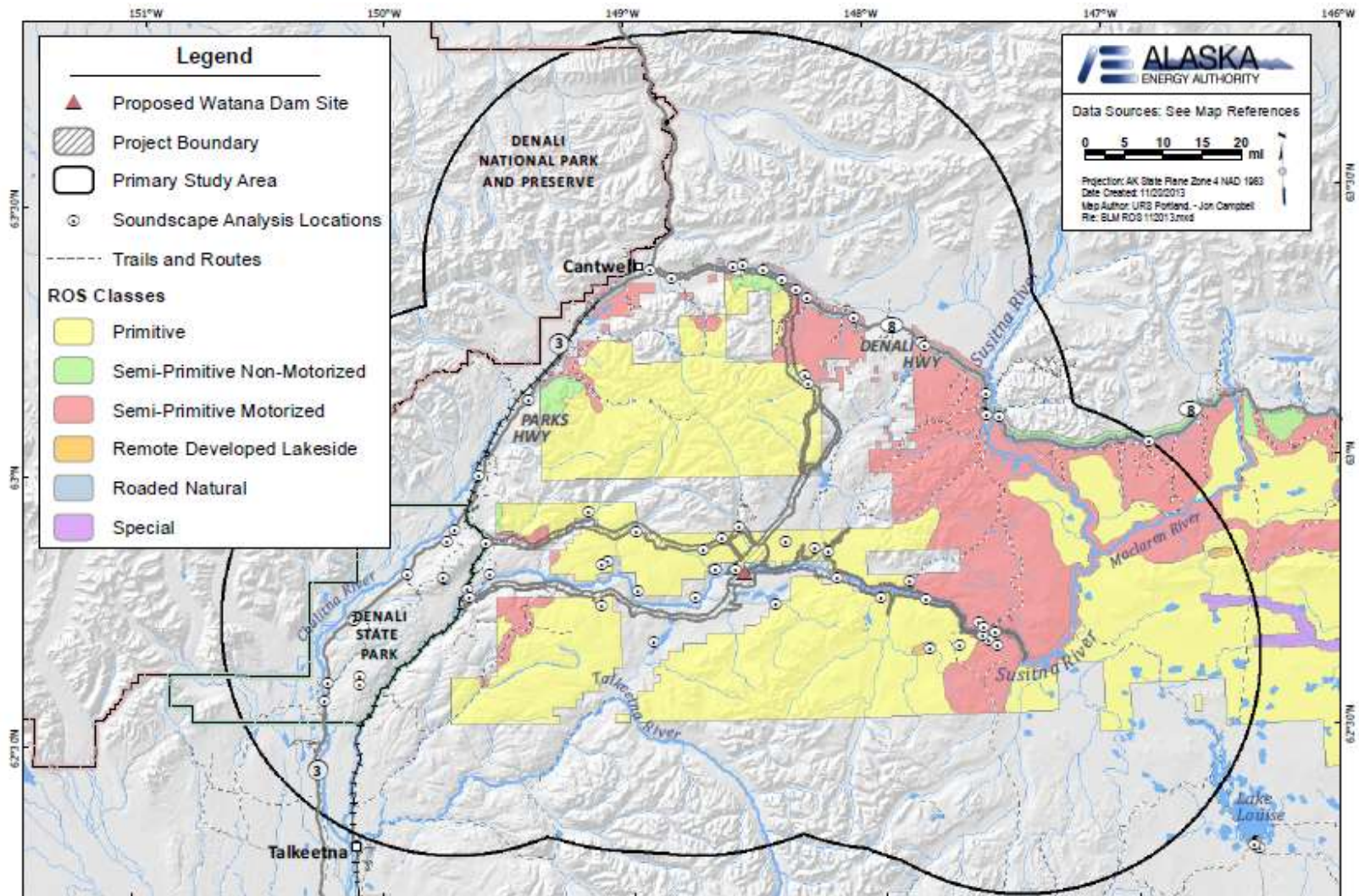
Soundscape – Long Term ALs



Short Term Sound ALs



ROS Designations



Variations - Soundscape

- No variance in methods to collect baseline data occurred
- No CIRWG-owned lands visited
- ALs were placed in nearby locations where season, time period, geographic settings and the proximity, type, and magnitude of sounds is assumed to be the same

Next Steps (Soundscape)

- Detailed analysis of the baseline data
- Consistency with management objectives
- Analysis of potential impact mechanisms
 - Construction
 - Operation
 - Future use

Downriver Study

- Open Flow Routing Model – January 2013 Version 1 and newer HEC-RAS modeling
- Flow and stage hydrographs under the operational scenario modeled would be within the natural range of variability at locations downriver of Talkeetna.
- Potential changes in the aesthetic attributes (visual or auditory) of the river not expected to be detectable.