

## FIGURES

**Susitna-Watana Hydroelectric Project  
(FERC No. 14241)**

**Riparian Vegetation Study Downstream of the  
Proposed Susitna-Watana Dam (11.6)**

**Figures**

**Initial Study Report**

Prepared for

Alaska Energy Authority



**SUSITNA-WATANA HYDRO**

*Clean, reliable energy for the next 100 years.*

Prepared by

ABR, Inc.—Environmental Research & Services

February 2014 Draft

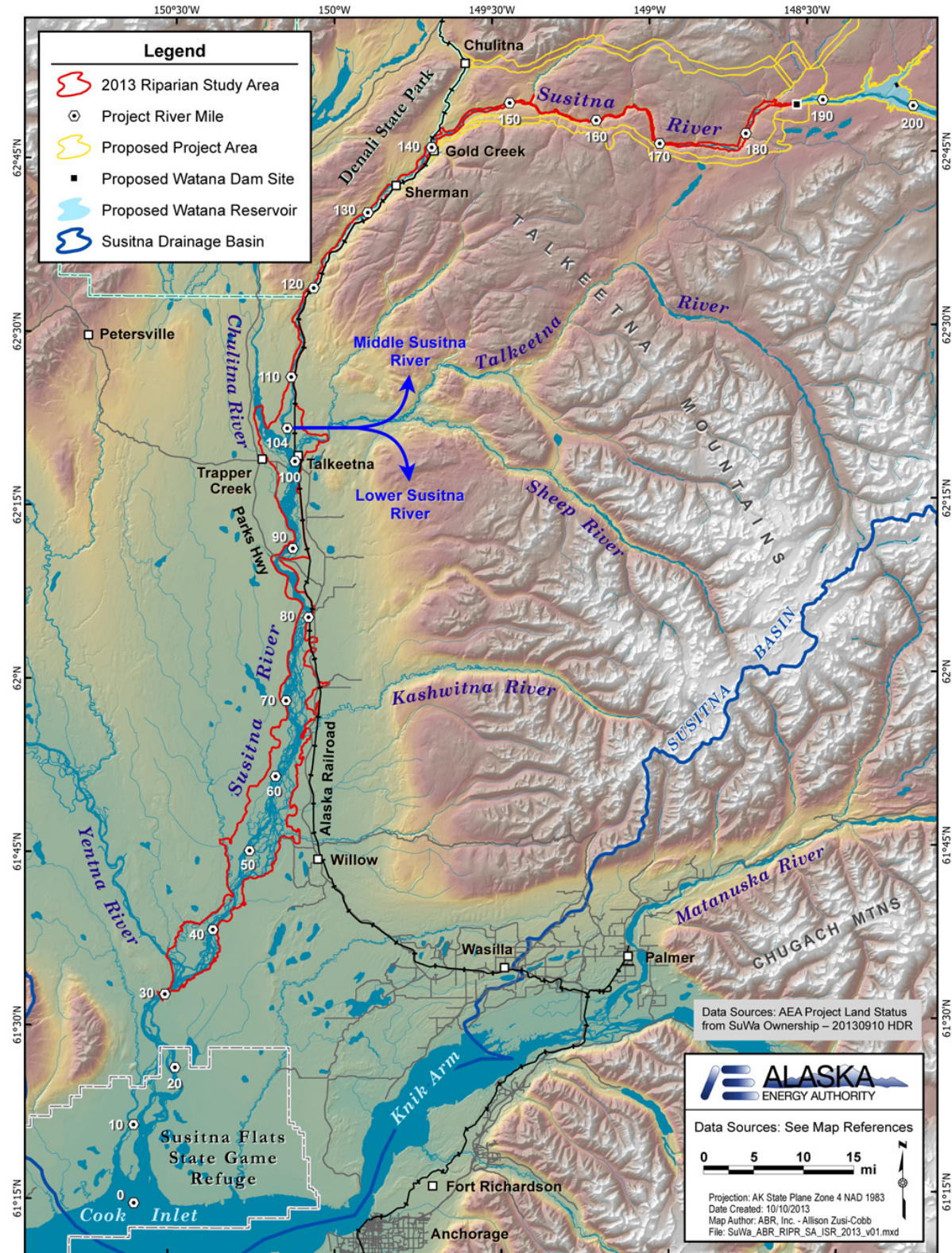


Figure 3-1. Study Area for the Riparian Vegetation Study, Susitna-Watana Hydroelectric Project, 2013.



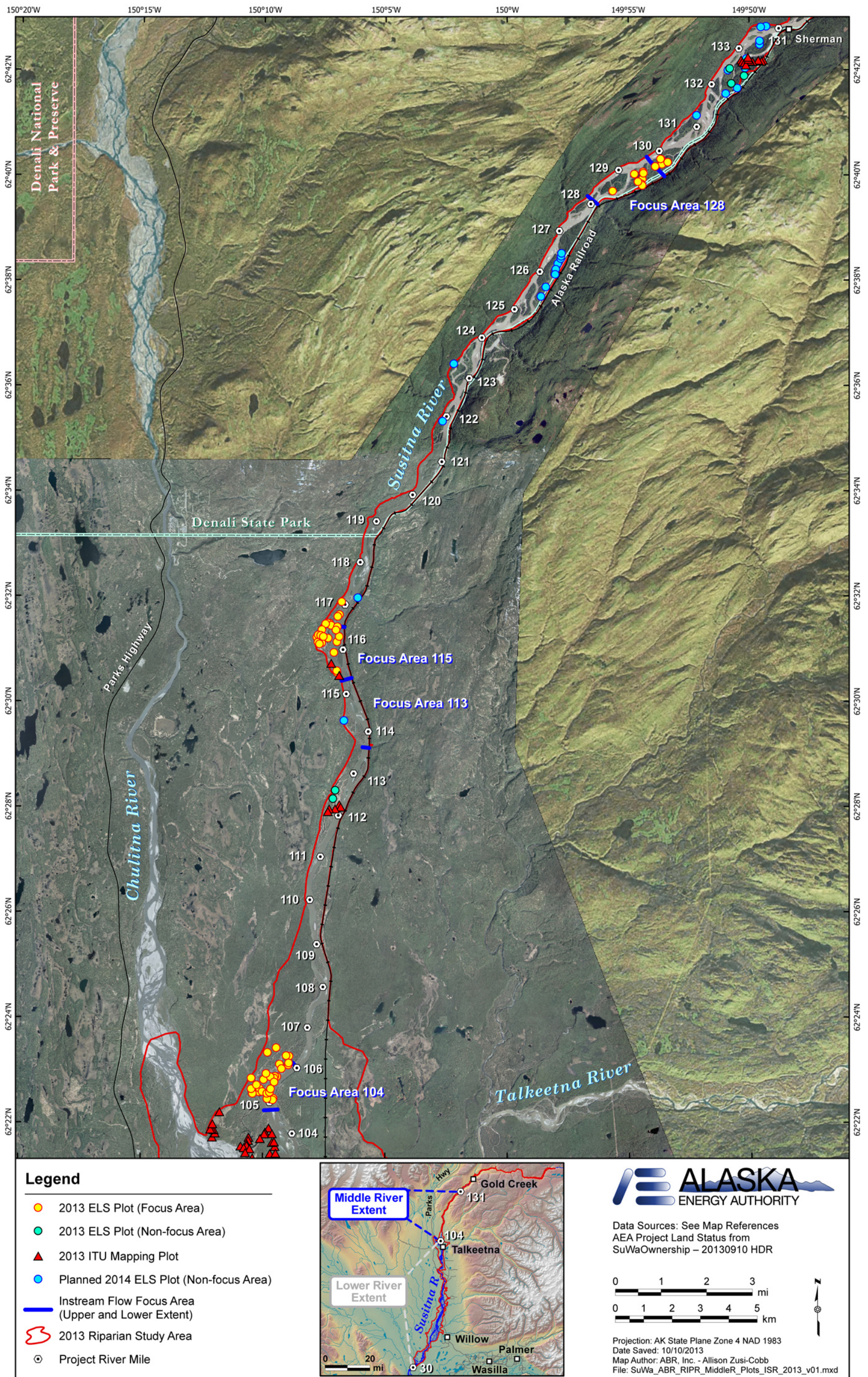


Figure 4.2-1. Middle Susitna River ELS and ITU Mapping Plot Locations, Riparian Vegetation Study, Susitna-Watana Hydroelectric Project, 2013.



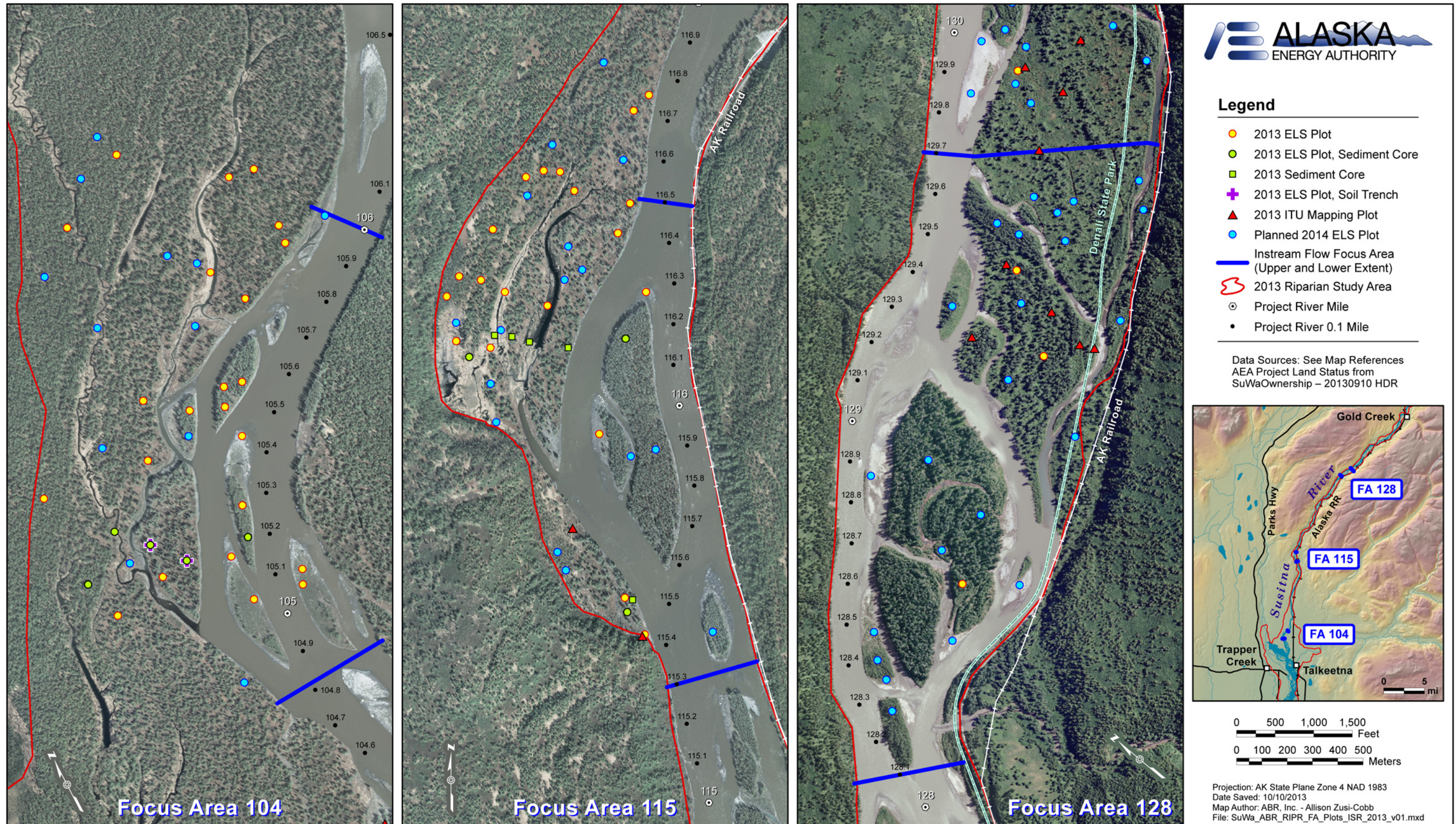


Figure 4.2-2. ELS and ITU Mapping Plot Locations in Focus Areas 104 (Whiskers Slough), 115 (Slough 6A), and 128 (Slough 8A), including Sediment Core and Trench Locations, Riparian Vegetation Study, Susitna-Watana Hydroelectric Project, 2013.



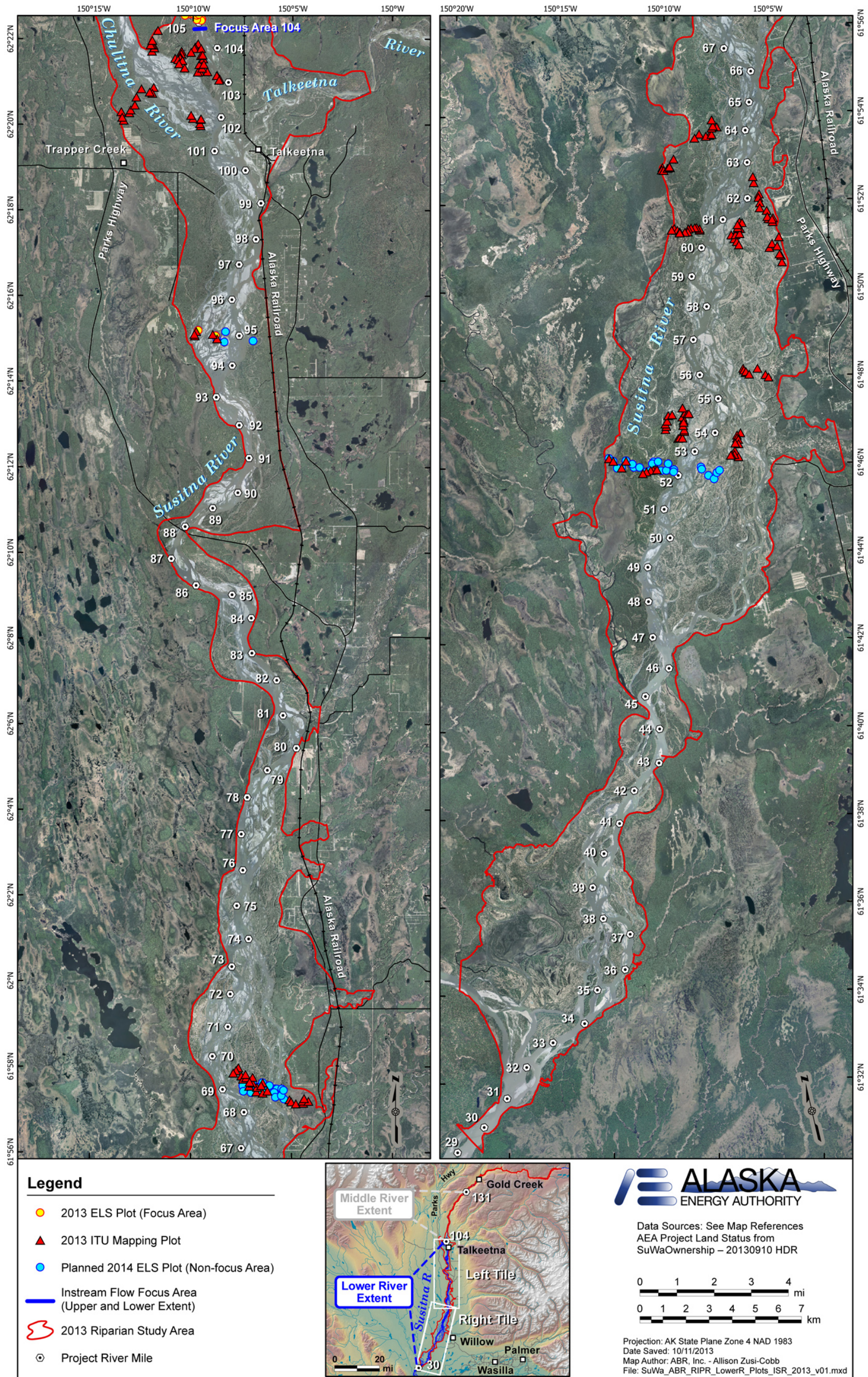


Figure 4.2-3. ELS and ITU Mapping Plot Locations in the Lower Susitna River, Riparian Vegetation Study, Susitna-Watana Hydroelectric Project, 2013.



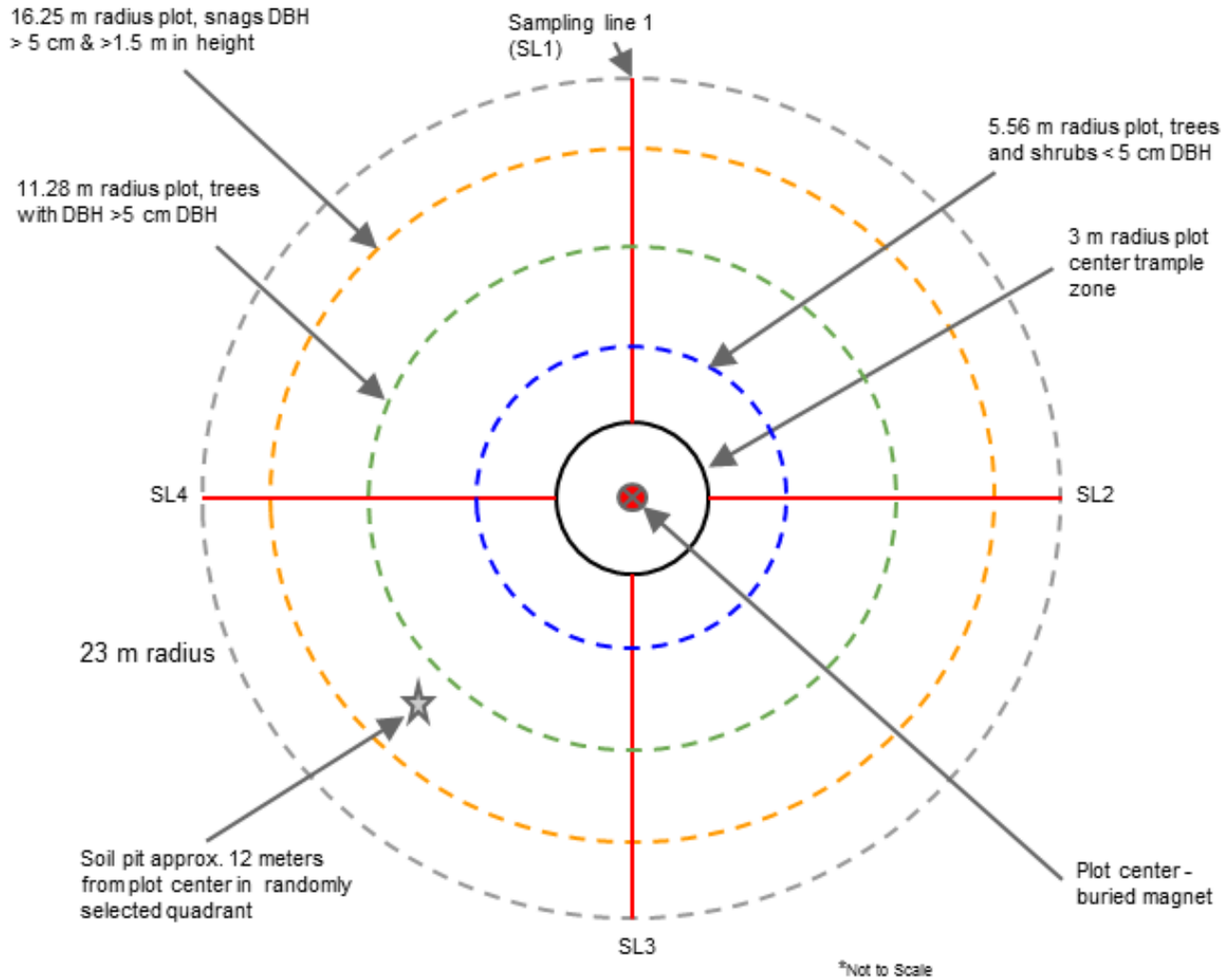


Figure 4.2-4. ELS Plot Layout, Riparian Vegetation Study, Susitna-Watana Hydroelectric Project, 2013.



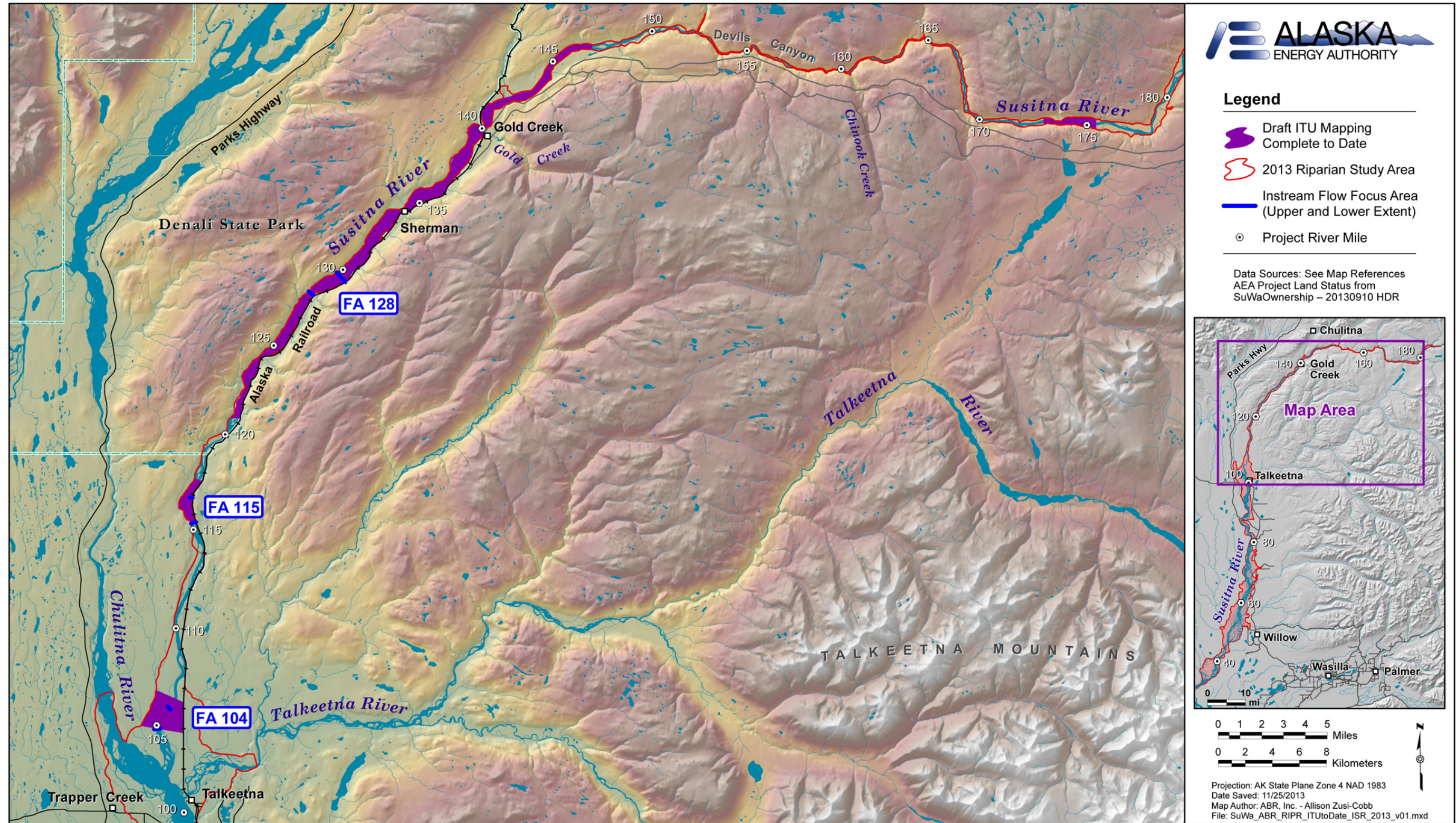


Figure 4.3-1. Integrated Terrain Unit (ITU) Mapping Completed as of Q4 2013, Riparian Vegetation Study, Susitna-Watana Hydroelectric Project, 2013.



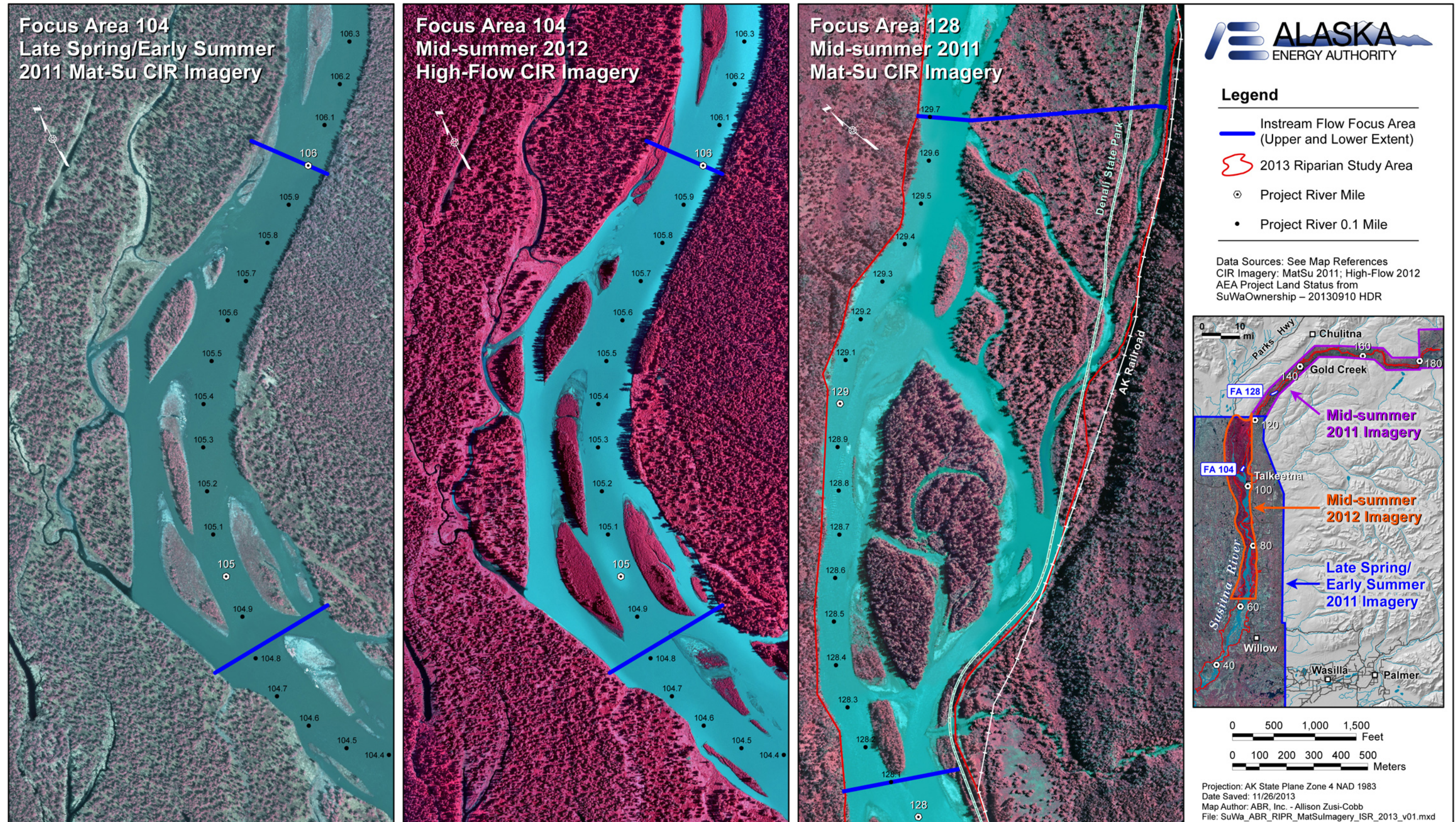


Figure 4.3-2. Comparison of Two Types of Aerial Imagery Across Three Time Periods, Including Late Spring/Early Summer 2011, Mid-Summer 2011, and Mid-Summer 2012 at Focus Areas 104 (Whiskers Slough) and 128 (Slough 6A), Middle Susitna River, Riparian Vegetation Study, Susitna-Watana Hydroelectric Project, 2013.



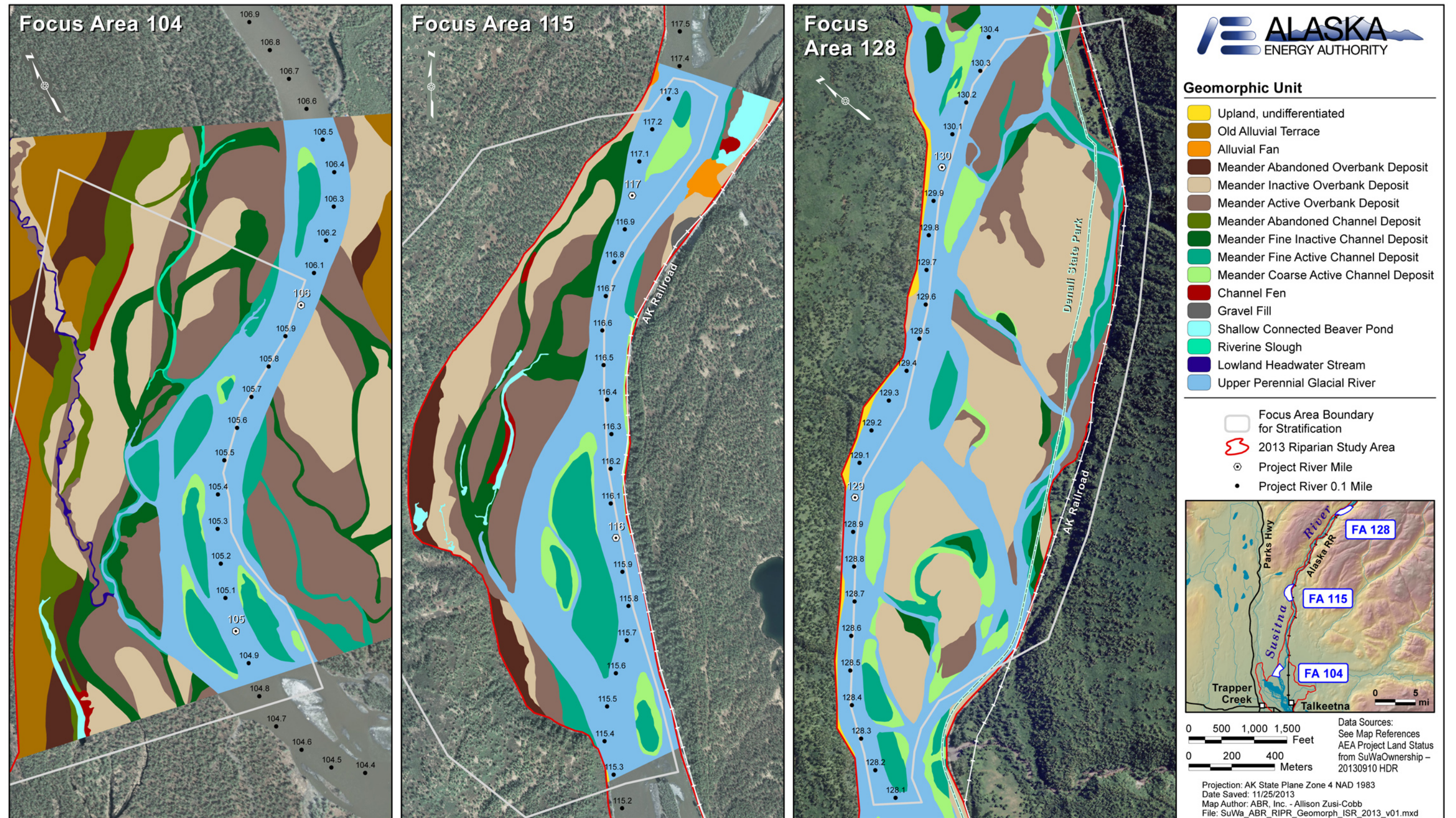


Figure 5-1. Maps of Geomorphic Units in Focus Areas 104 (Whiskers Slough), 115 (Slough 6A), and 128 (Slough 8A), Middle Susitna River, Riparian Vegetation Study, Susitna-Watana Hydroelectric Project, 2013.



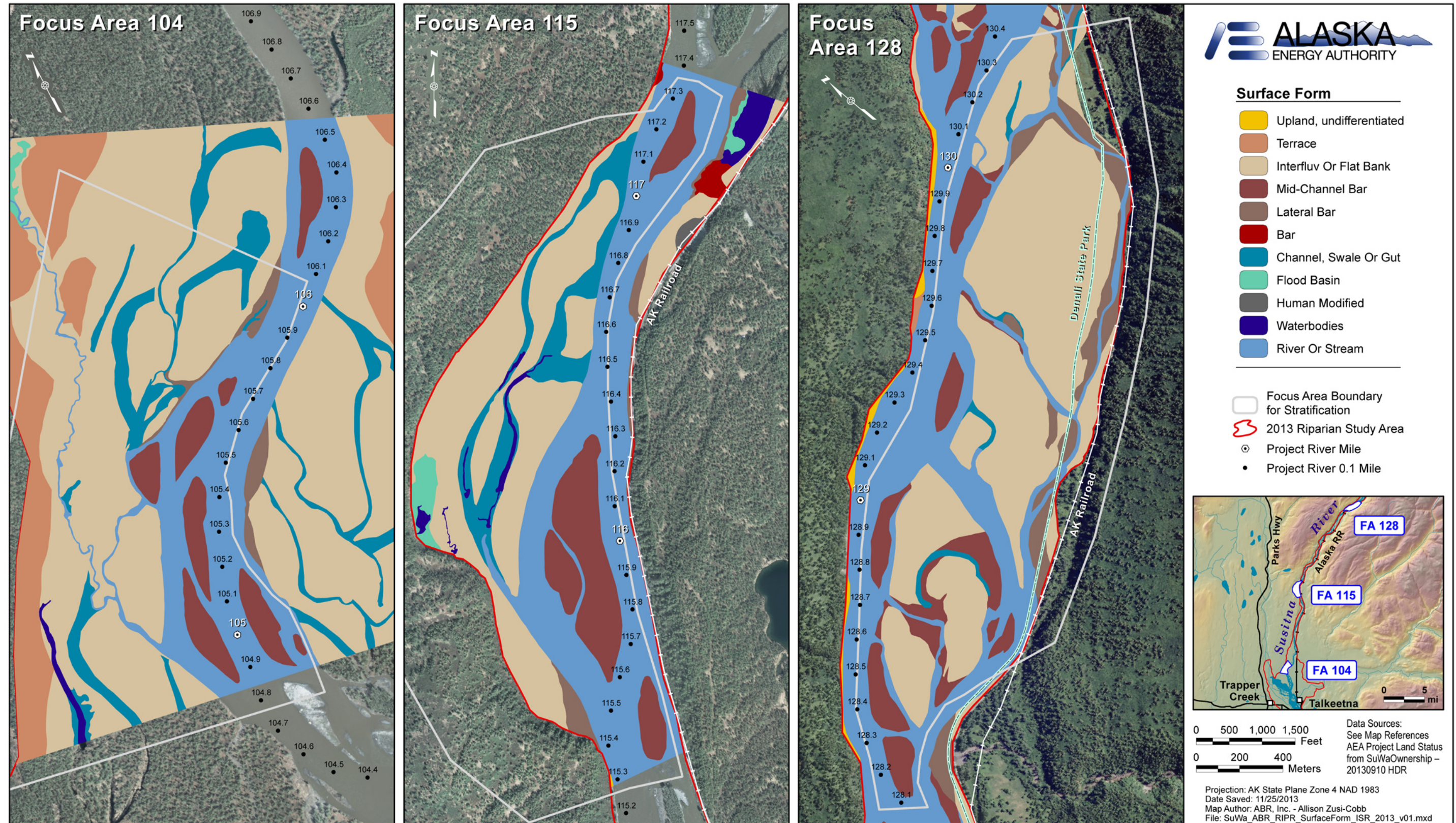


Figure 5-2. Maps of Surface Forms in Focus Areas 104 (Whiskers Slough), 115 (Slough 6A), and 128 (Slough 8A), Middle Susitna River, Riparian Vegetation Study, Susitna-Watana Hydroelectric Project, 2013.



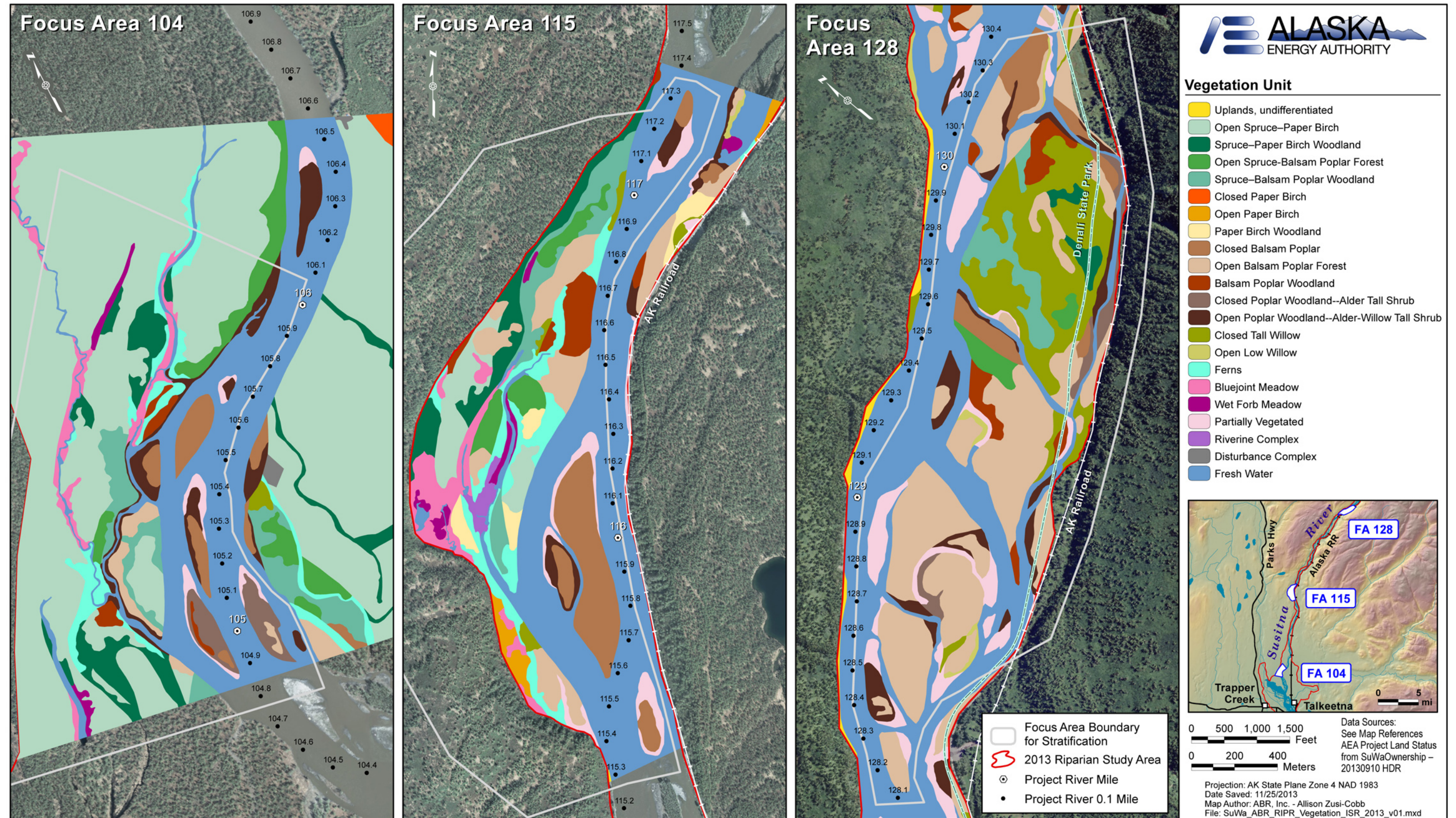


Figure 5-3. Maps of Vegetation Classes in Focus Areas 104 (Whiskers Slough), 115 (Slough 6A), and 128 (Slough 8A), Middle Susitna River, Riparian Vegetation Study, Susitna-Watana Hydroelectric Project, 2013.



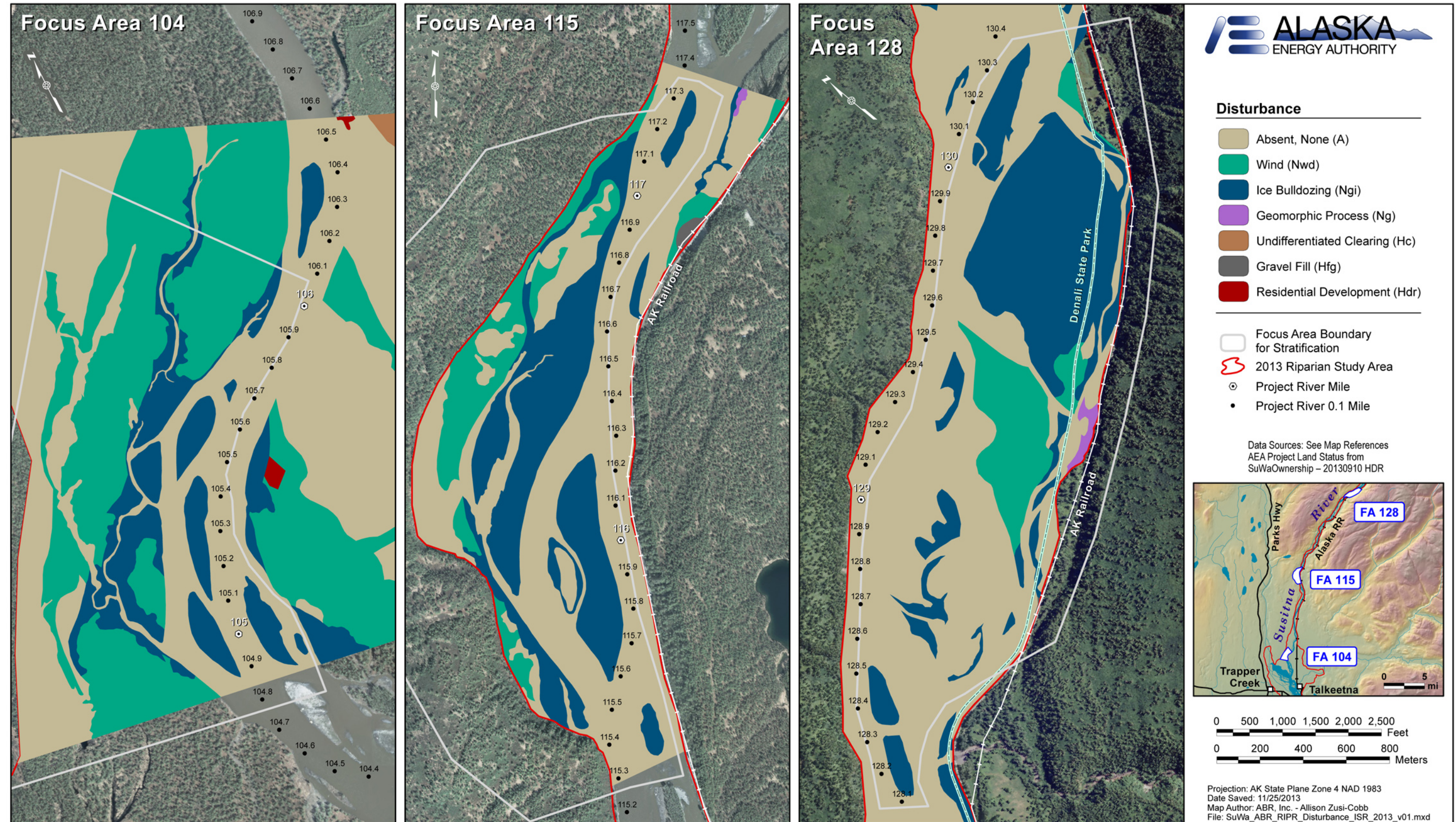


Figure 5-4. Maps of Disturbance in Focus Areas 104 (Whiskers Slough), 115 (Slough 6A), and 128 (Slough 8A), Middle Susitna River, Riparian Vegetation Study, Susitna-Watana Hydroelectric Project, 2013.



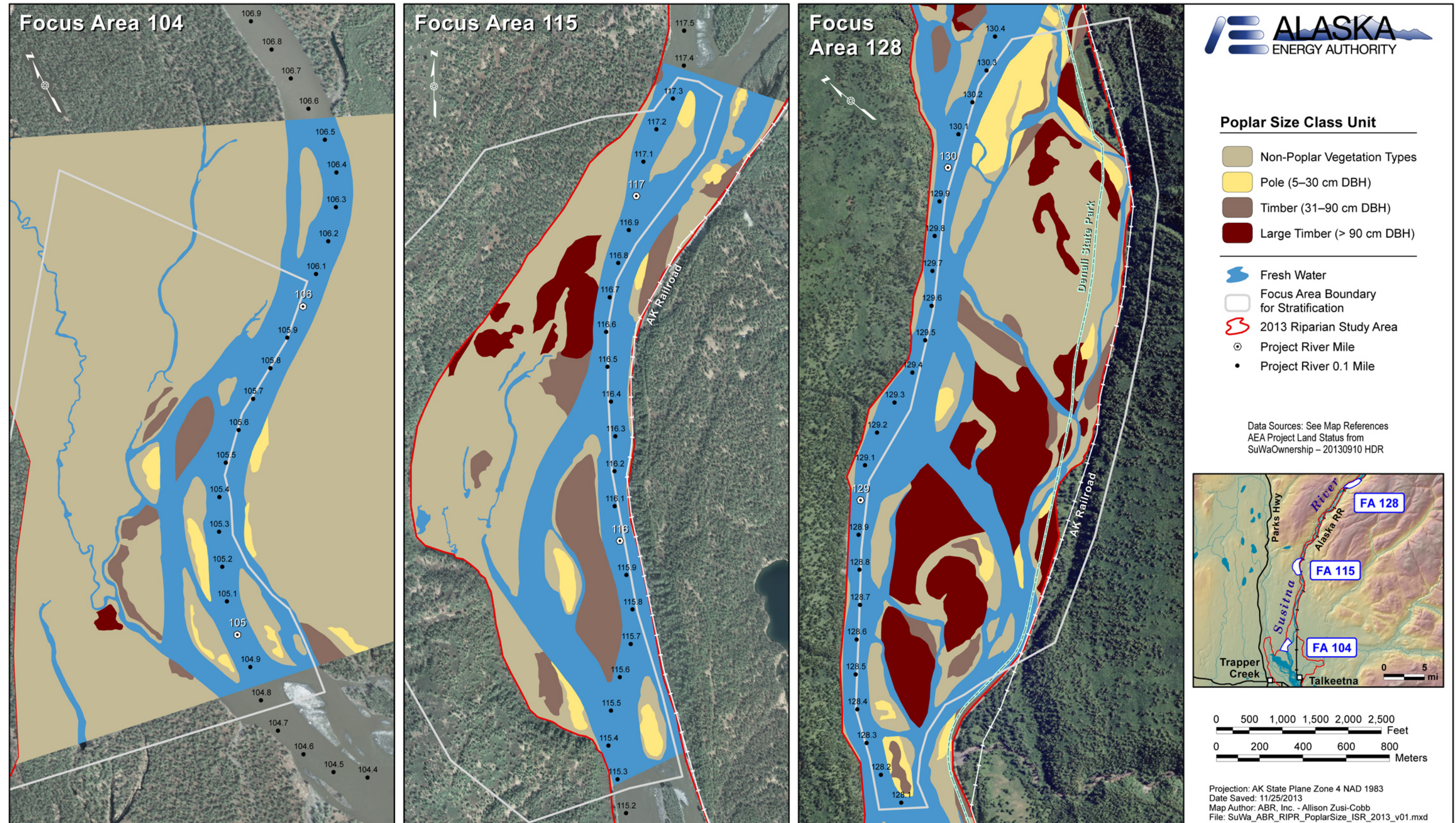


Figure 5-5. Maps of Poplar Size Classes in Focus Areas 104 (Whiskers Slough), 115 (Slough 6A), and 128 (Slough 6A), Middle Susitna River, Riparian Vegetation Study, Susitna-Watana Hydroelectric Project, 2013.



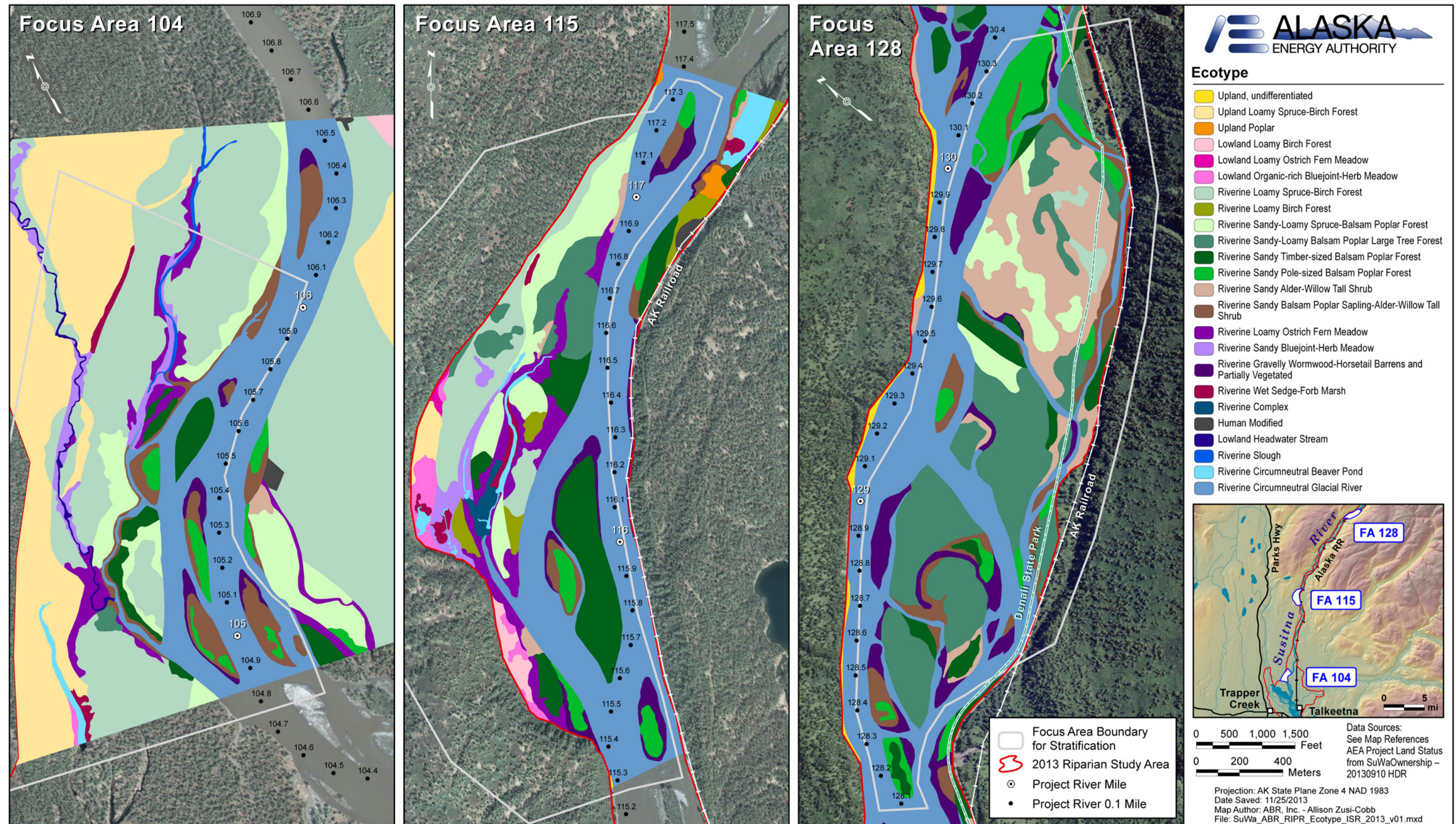


Figure 5-6. Maps of Preliminary Ecotype Classes in Focus Areas 104 (Whiskers Slough), 115 (Slough 6A), and 128 (Slough 8A), Middle Susitna River, Riparian Vegetation Study, Susitna-Watana Hydroelectric Project, 2013.