

## APPENDIX A: SAMPLING SITE MAPS

# **Susitna-Watana Hydroelectric Project (FERC No. 14241)**

## **Study of Fish Distribution and Abundance in the Middle and Lower Susitna River Study (9.6)**

### **Appendix A Sampling Site Maps**

### **Initial Study Report**

Prepared for

Alaska Energy Authority



**SUSITNA-WATANA HYDRO**

*Clean, reliable energy for the next 100 years.*

Prepared by

R2 Resource Consultants Inc.

LGL Alaska Research Associates, Inc.

Golder Associates Inc. &

HDR, Inc.]

February 2014 Draft

## LIST OF FIGURES

Figure A1. GRTS sites sampled in Geomorphic Reach MR-1 including focus area FA-184 (Watana Dam), 2013.....	1
Figure A2. GRTS sites sampled in Geomorphic Reach MR-2 including FA-173 (Stephan Lake Complex), 2013.....	2
Figure A3. GRTS sites sampled by habitat type for Geomorphic Reach MR-5 including FA-151 (Portage Creek), 2013.....	3
Figure A4. GRTS sites sampled by habitat type for Geomorphic Reach MR-6 including FA 144 (Slough 21), FA-141 (Indian River), FA-138 (Gold Creek), and FA-128 (Slough 8A), 2013.....	4
Figure A5. GRTS sites sampled by habitat type for Geomorphic Reach MR-7 including FA-115 (Slough 6A) and FA-113 (Oxbow I), 2013.....	5
Figure A6. GRTS sites sampled in Geomorphic Reach MR-8 including FA-104 (Whiskers Slough), 2013.....	6
Figure A7. Sites sampled along Lower River transect PRM 100.3, 2013.....	7
Figure A8. Sites sampled along Lower River transect PRM 92.9, 2013.....	8
Figure A9. Sites sampled along Lower River transect PRM 85.6, 2013.....	9
Figure A10. Sites sampled along Lower River transect PRM 78.2, 2013.....	10
Figure A11. Sites sampled along Lower River transect PRM 70.8, 2013.....	11
Figure A12. Sites sampled along Lower River transect PRM 63.5, 2013.....	12
Figure A13. Sites sampled along Lower River transect PRM 56.1, 2013.....	13
Figure A14. Sites sampled along Lower River transect PRM 48.8, 2013.....	14
Figure A15. Sites sampled along Lower River transect PRM 41.4, 2013.....	15
Figure A16. Sites sampled along Lower River transect PRM 34, 2013.....	16



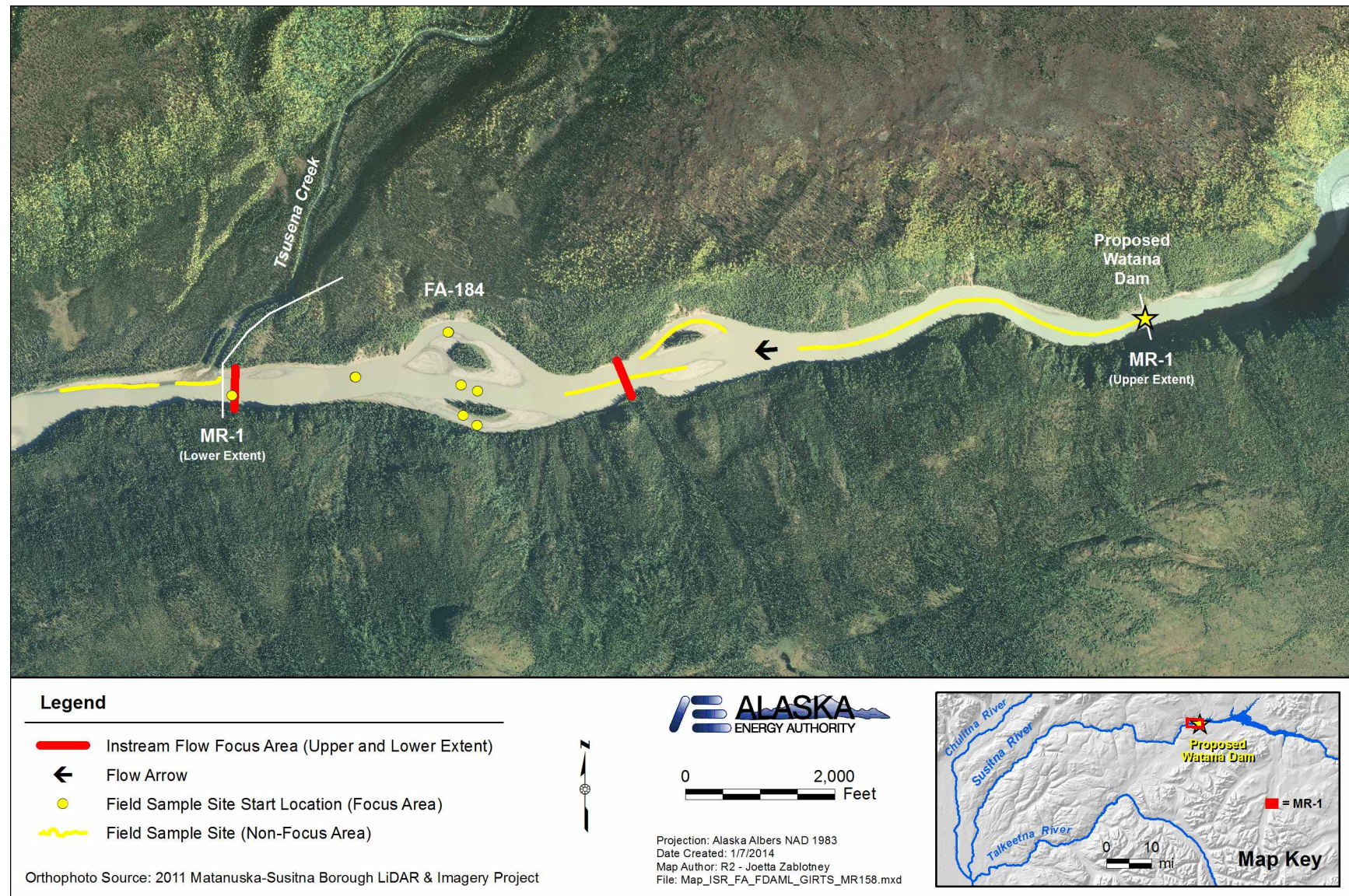


Figure A1. GRTS sites sampled in Geomorphic Reach MR-1 including focus area FA-184 (Watana Dam), 2013.



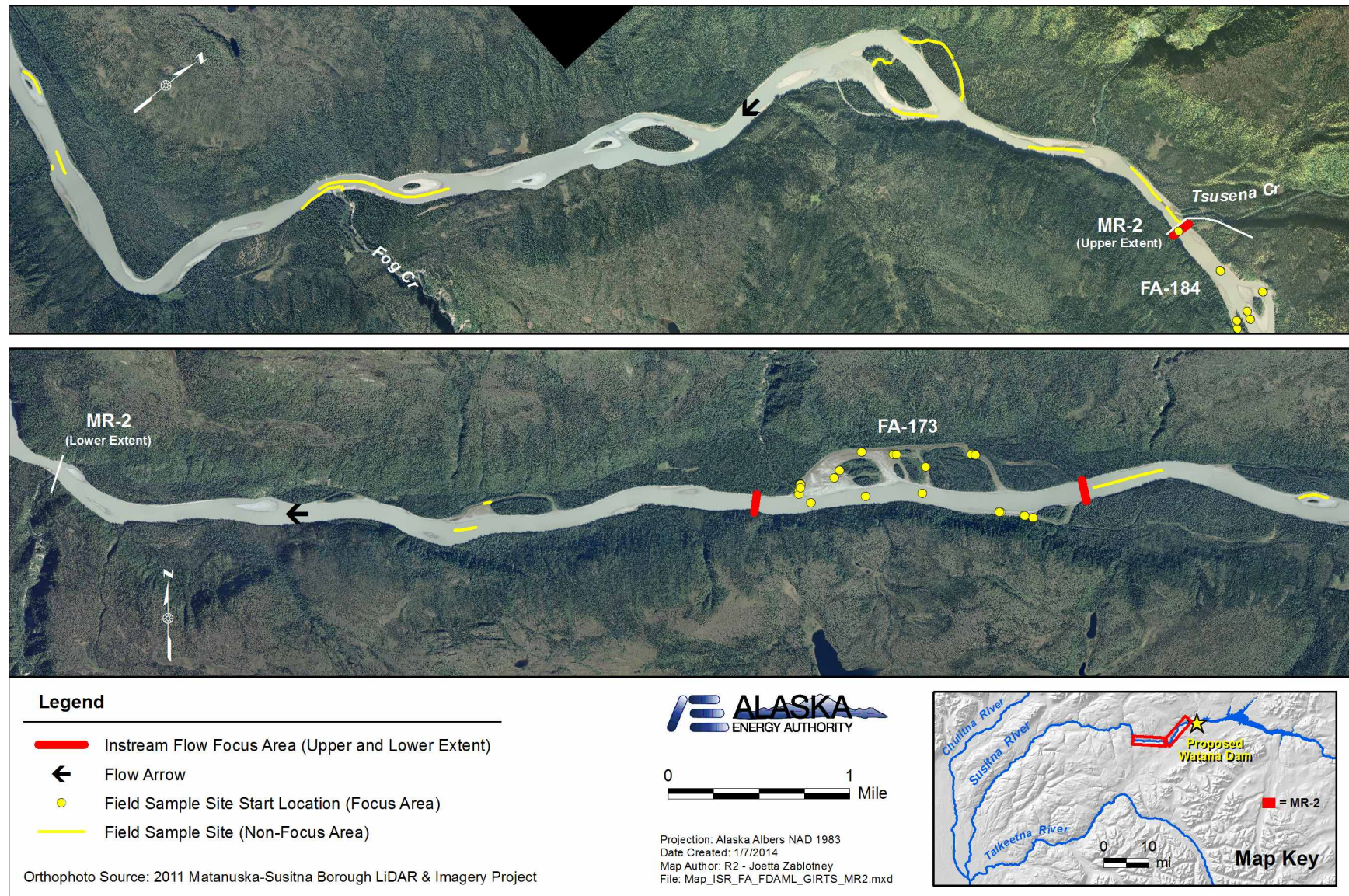


Figure A2. GRTS sites sampled in Geomorphic Reach MR-2 including FA-173 (Stephan Lake Complex), 2013.



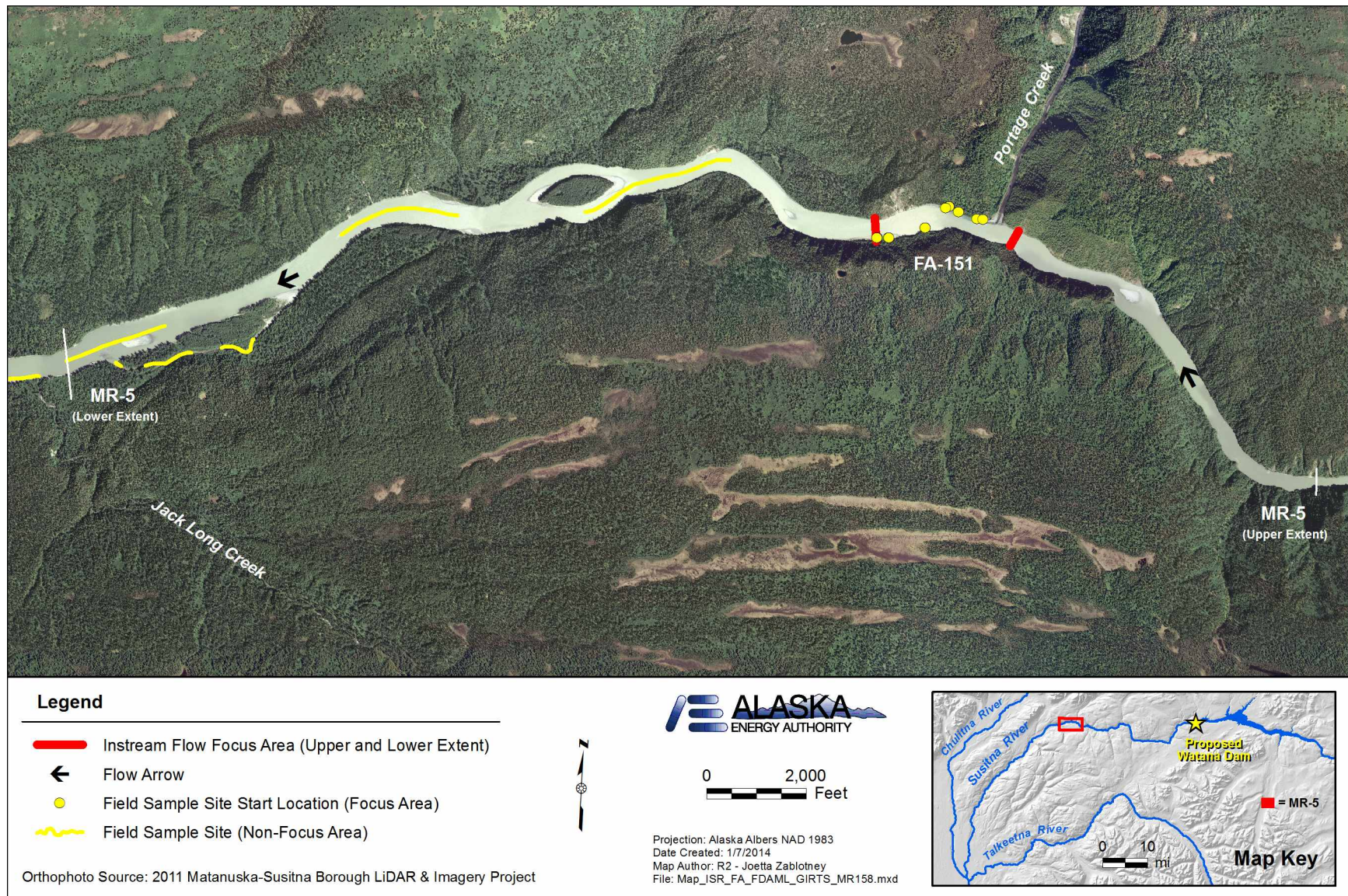


Figure A3. GRTS sites sampled by habitat type for Geomorphic Reach MR-5 including FA-151 (Portage Creek), 2013.



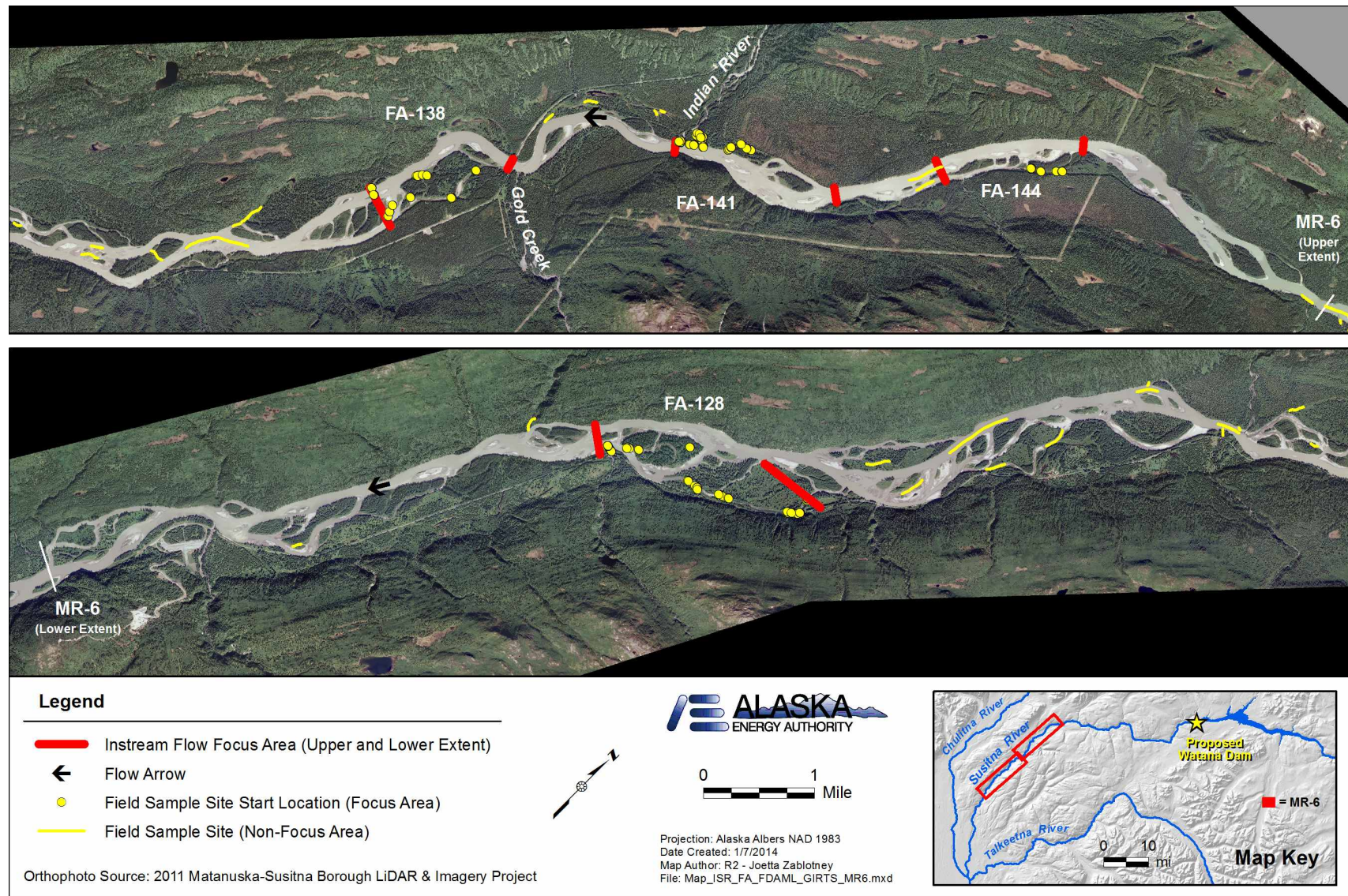


Figure A4. GRTS sites sampled by habitat type for Geomorphic Reach MR-6 including FA 144 (Slough 21), FA-141 (Indian River), FA-138 (Gold Creek), and FA-128 (Slough 8A), 2013.



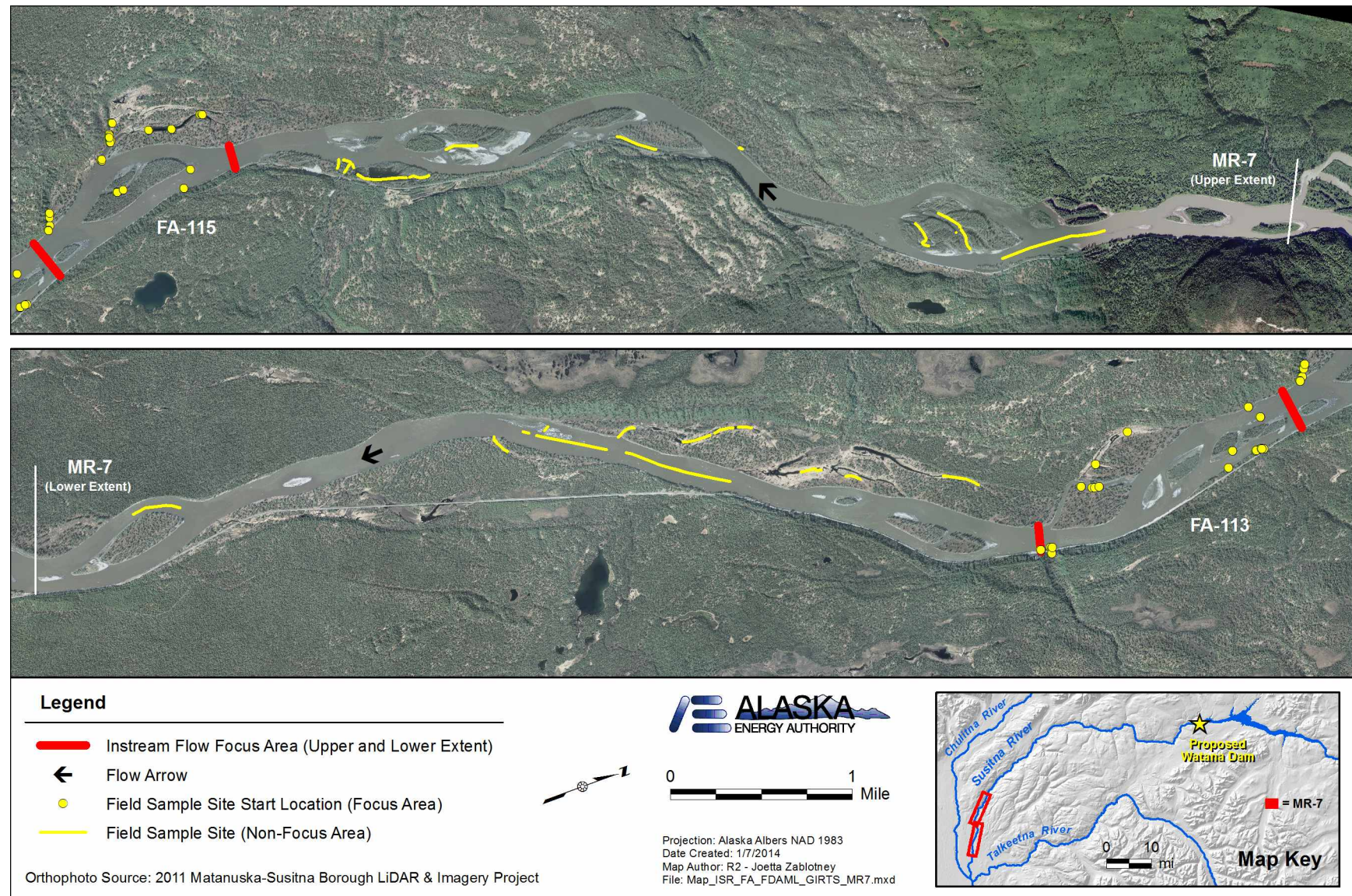


Figure A5. GRTS sites sampled by habitat type for Geomorphic Reach MR-7 including FA-115 (Slough 6A) and FA-113 (Oxbow I), 2013.



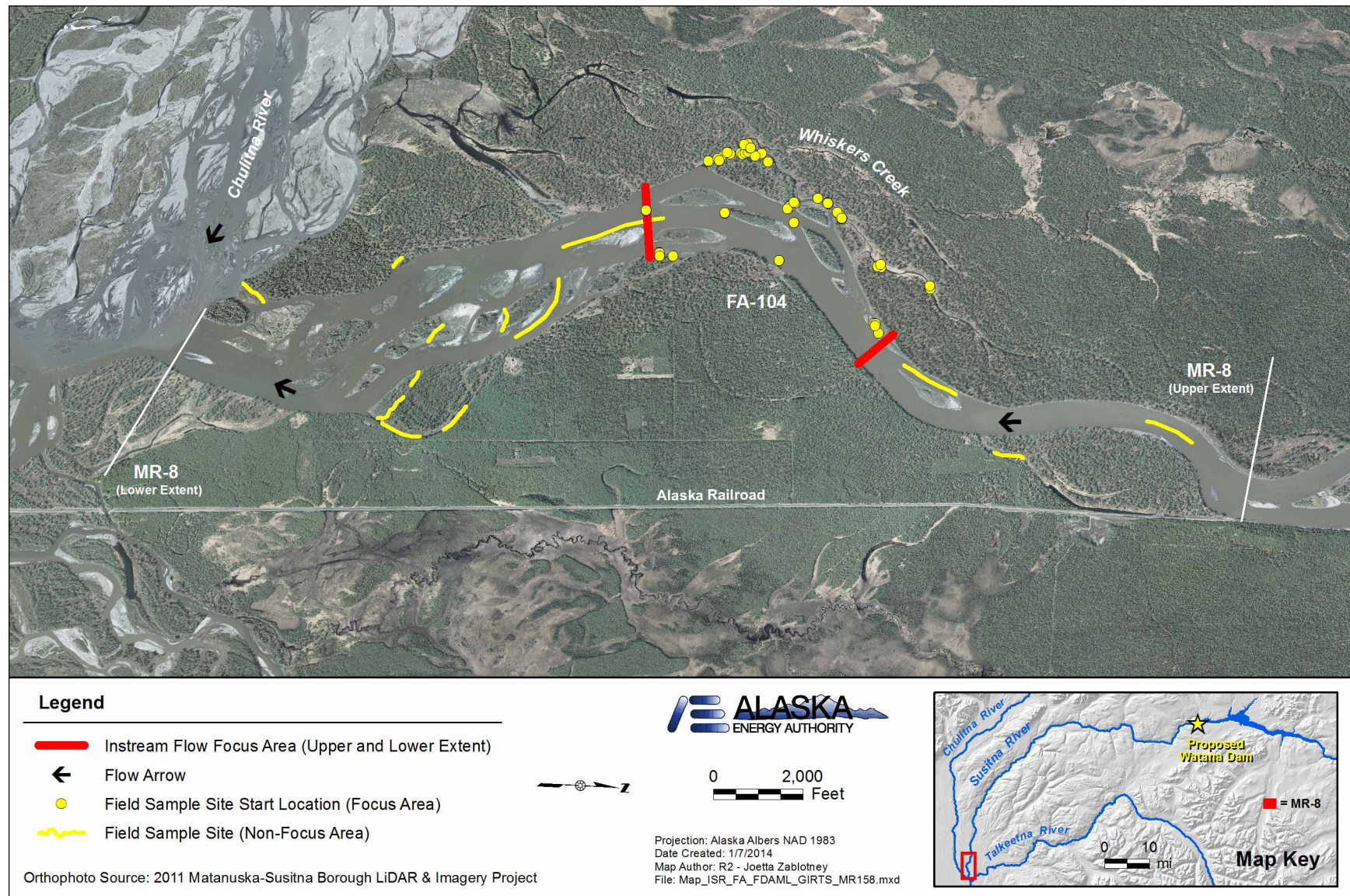


Figure A6. GRTS sites sampled in Geomorphic Reach MR-8 including FA-104 (Whiskers Slough), 2013.



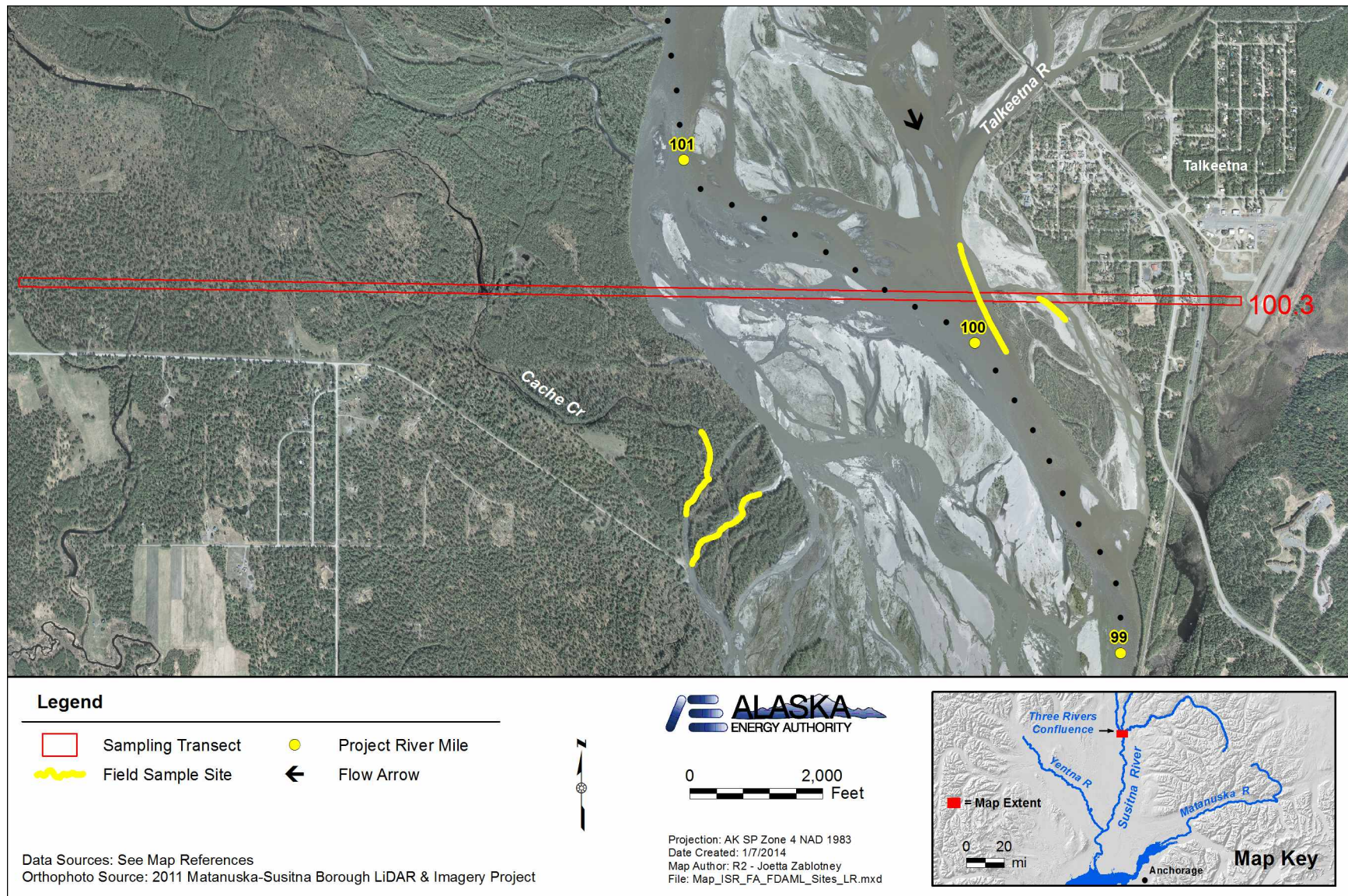


Figure A7. Sites sampled along Lower River transect PRM 100.3, 2013.



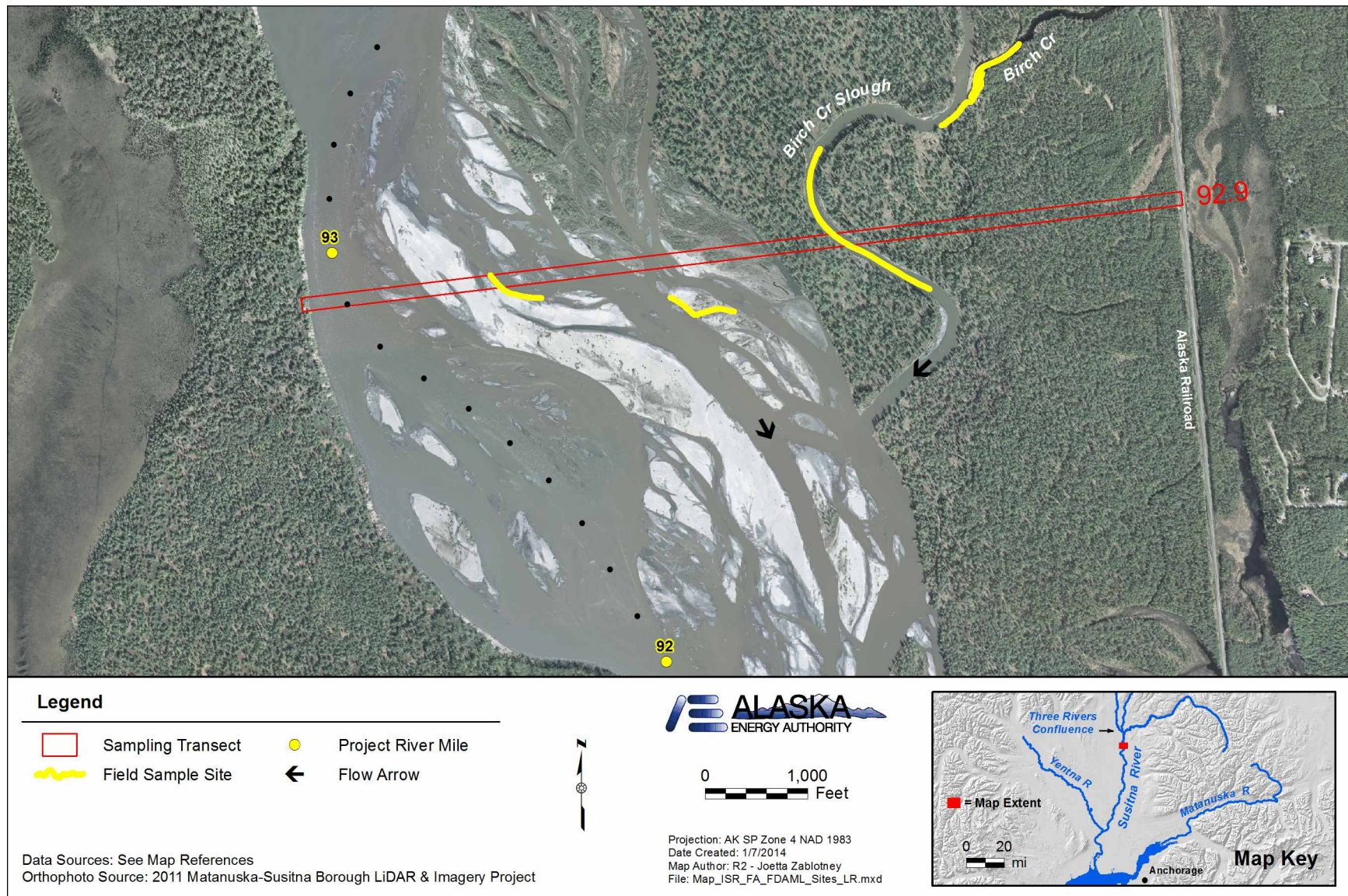


Figure A8. Sites sampled along Lower River transect PRM 92.9, 2013.



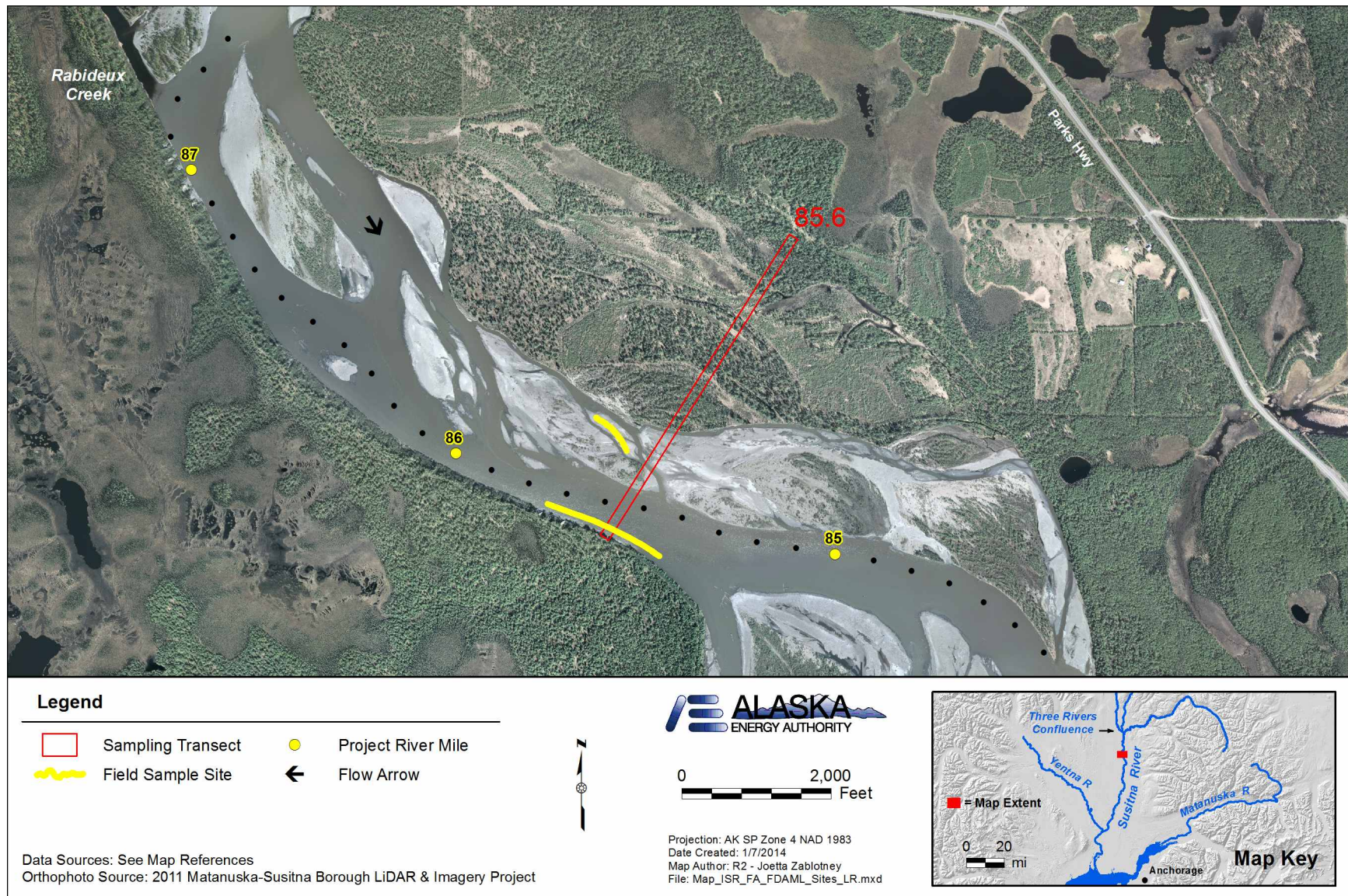


Figure A9. Sites sampled along Lower River transect PRM 85.6, 2013.



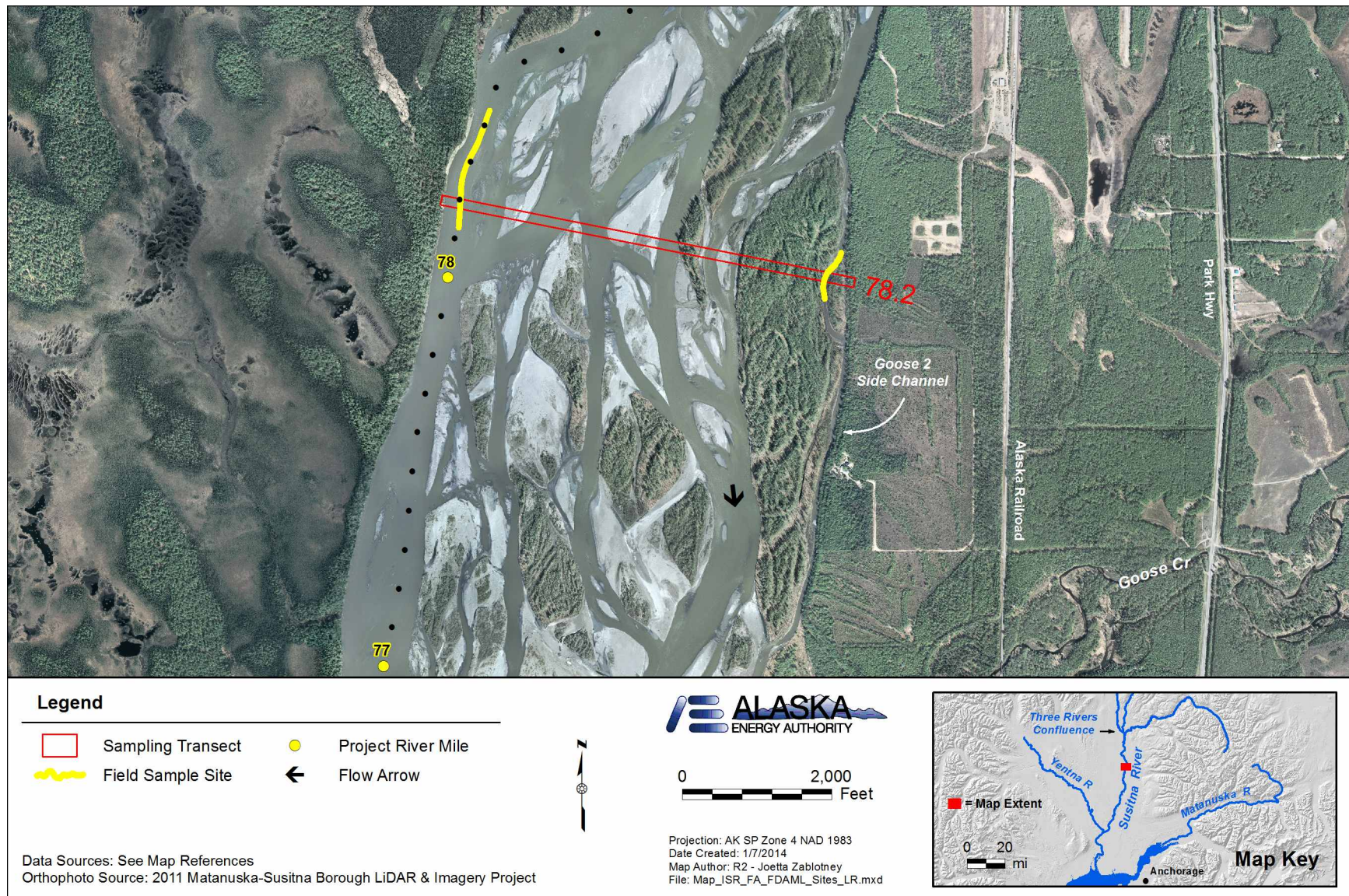


Figure A10. Sites sampled along Lower River transect PRM 78.2, 2013.



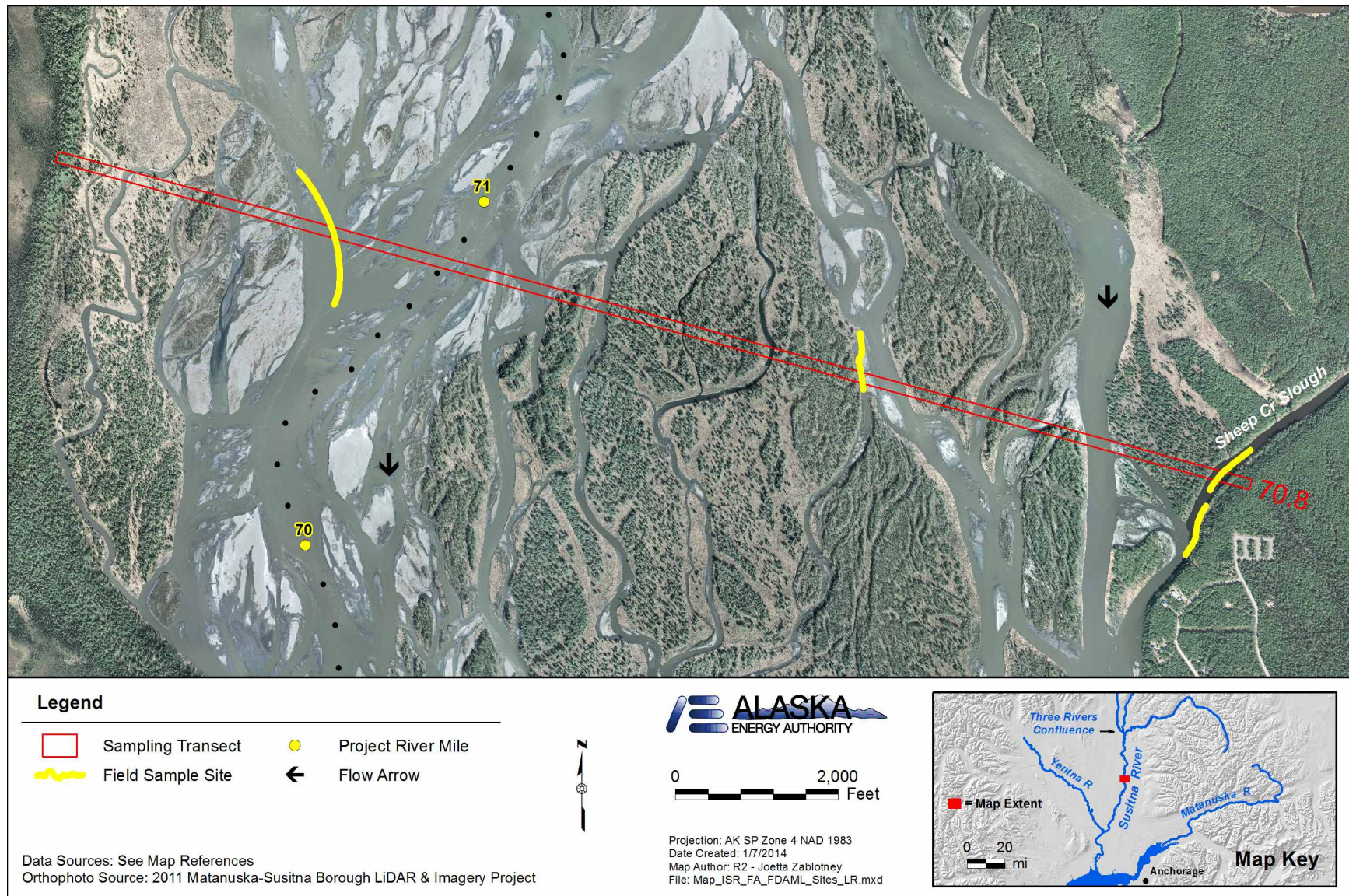


Figure A11. Sites sampled along Lower River transect PRM 70.8, 2013.



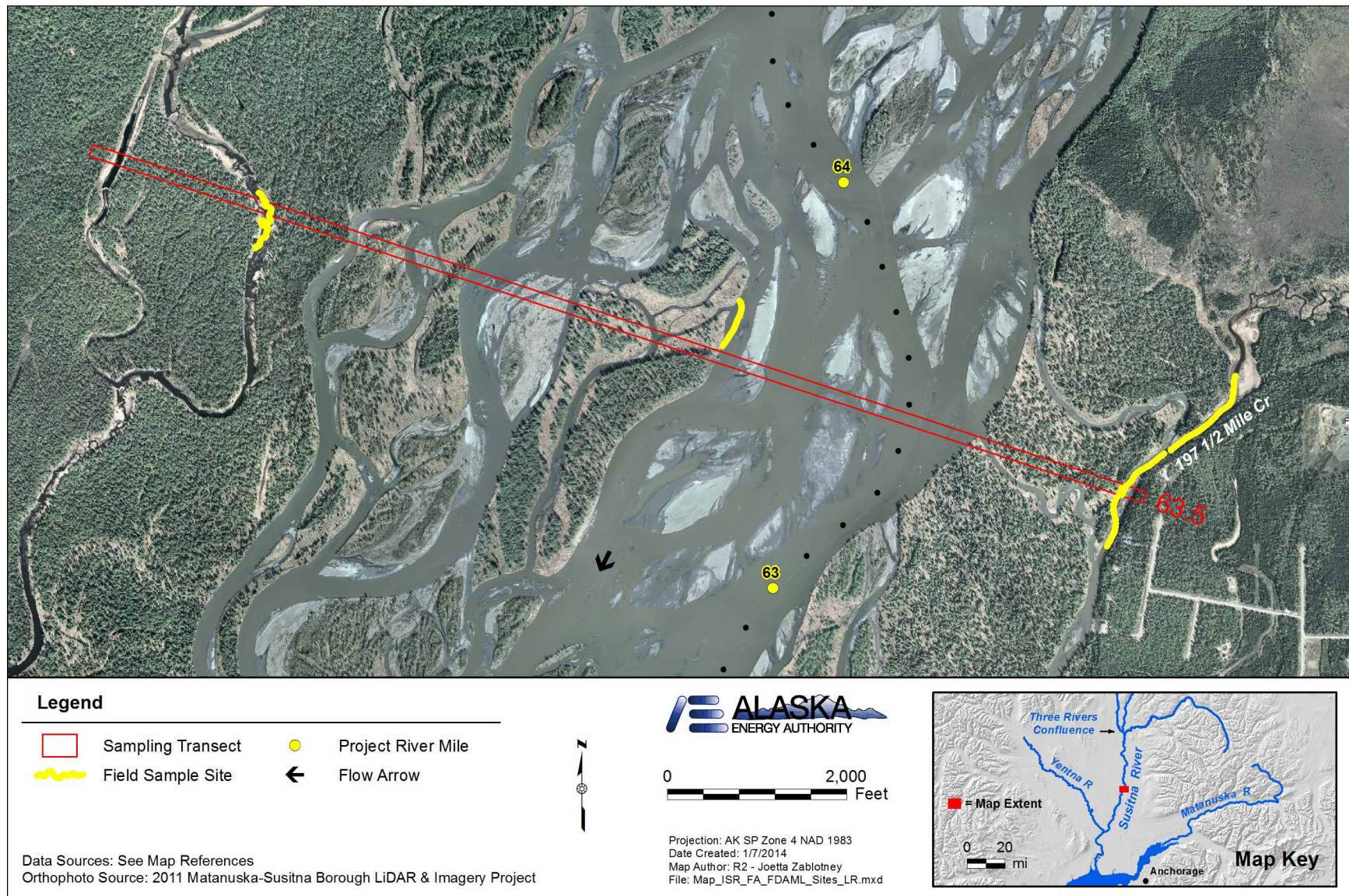


Figure A12. Sites sampled along Lower River transect PRM 63.5, 2013.



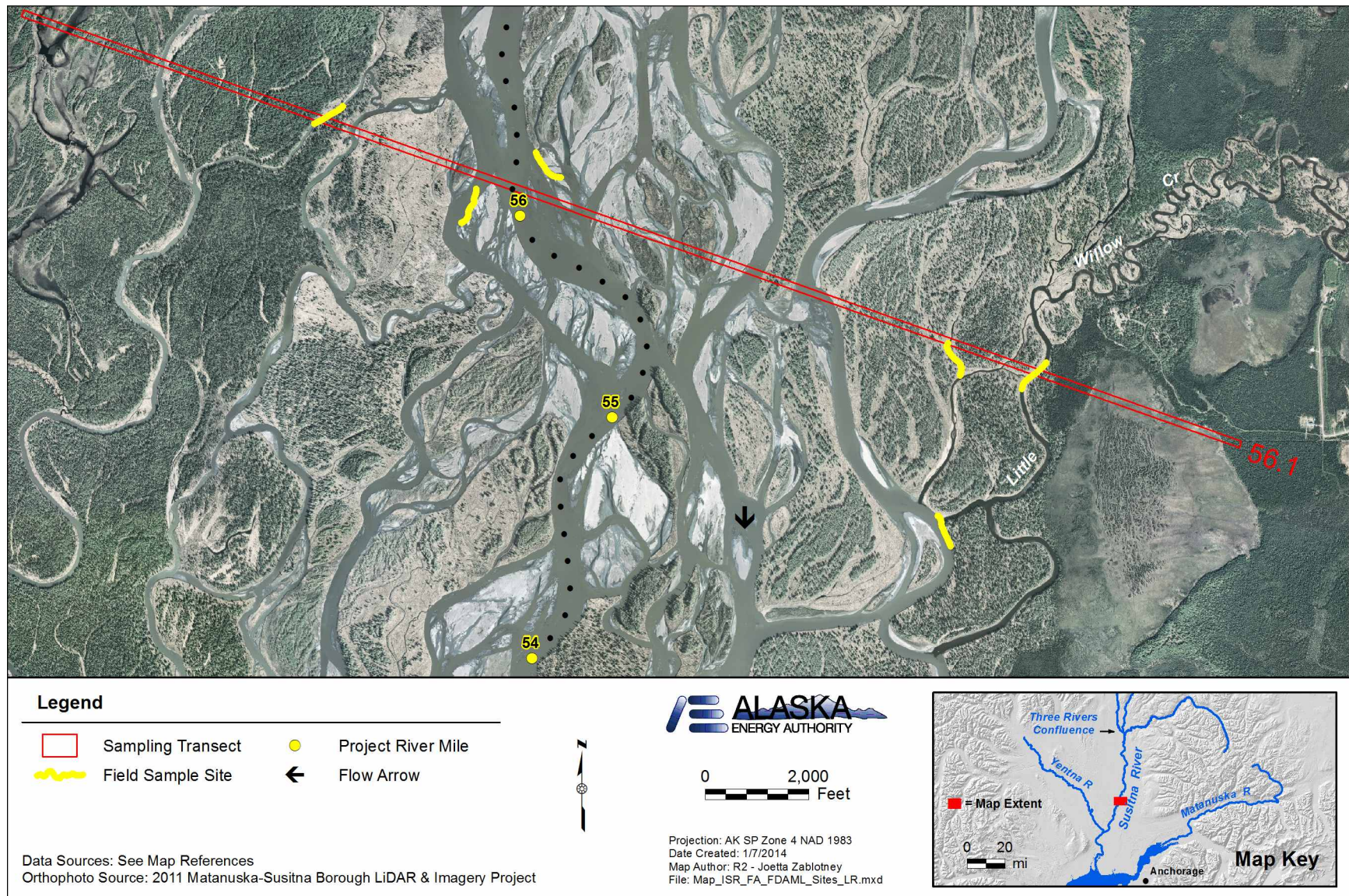


Figure A13. Sites sampled along Lower River transect PRM 56.1, 2013.



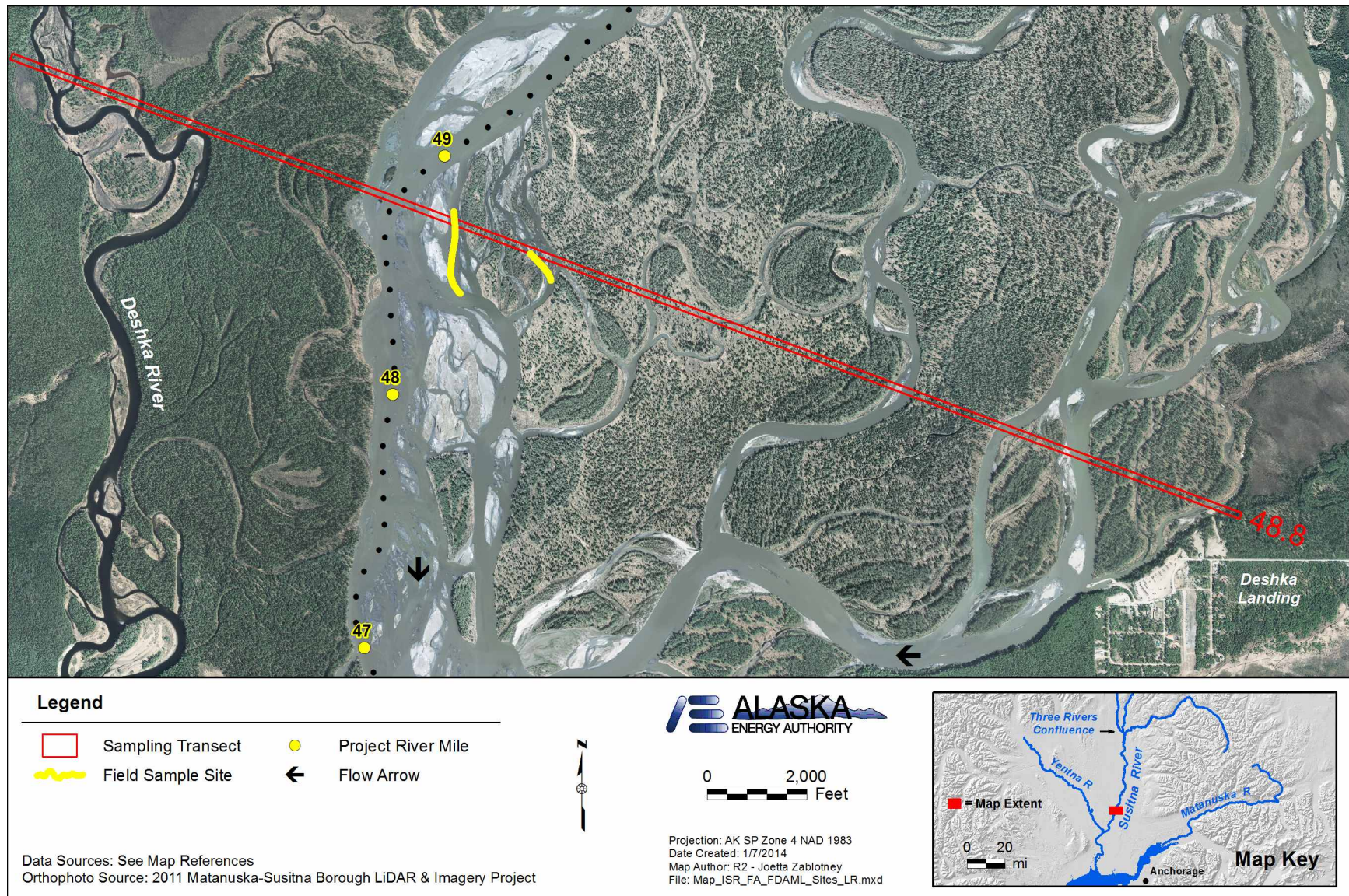


Figure A14. Sites sampled along Lower River transect PRM 48.8, 2013.



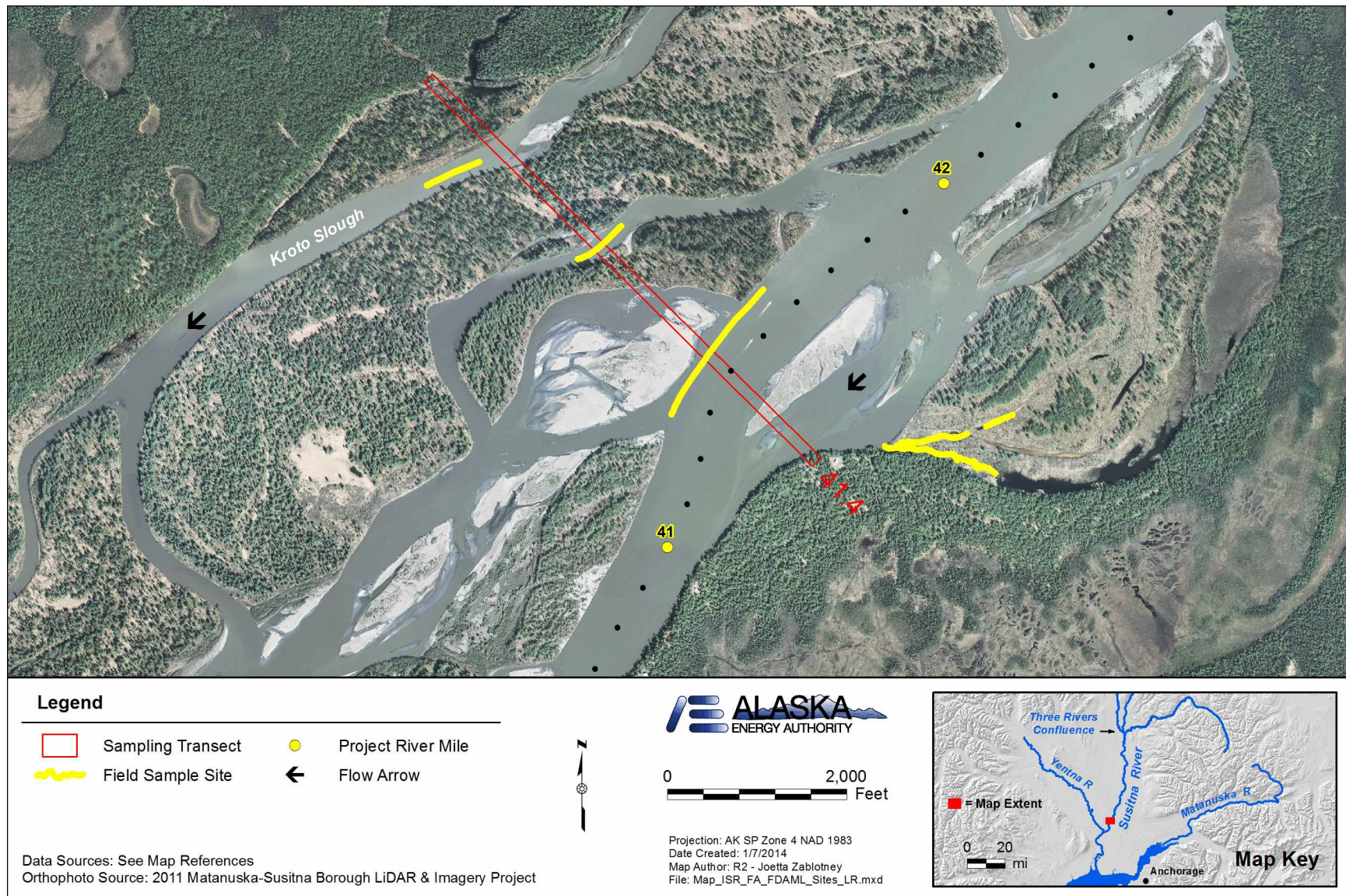


Figure A15. Sites sampled along Lower River transect PRM 41.4, 2013.



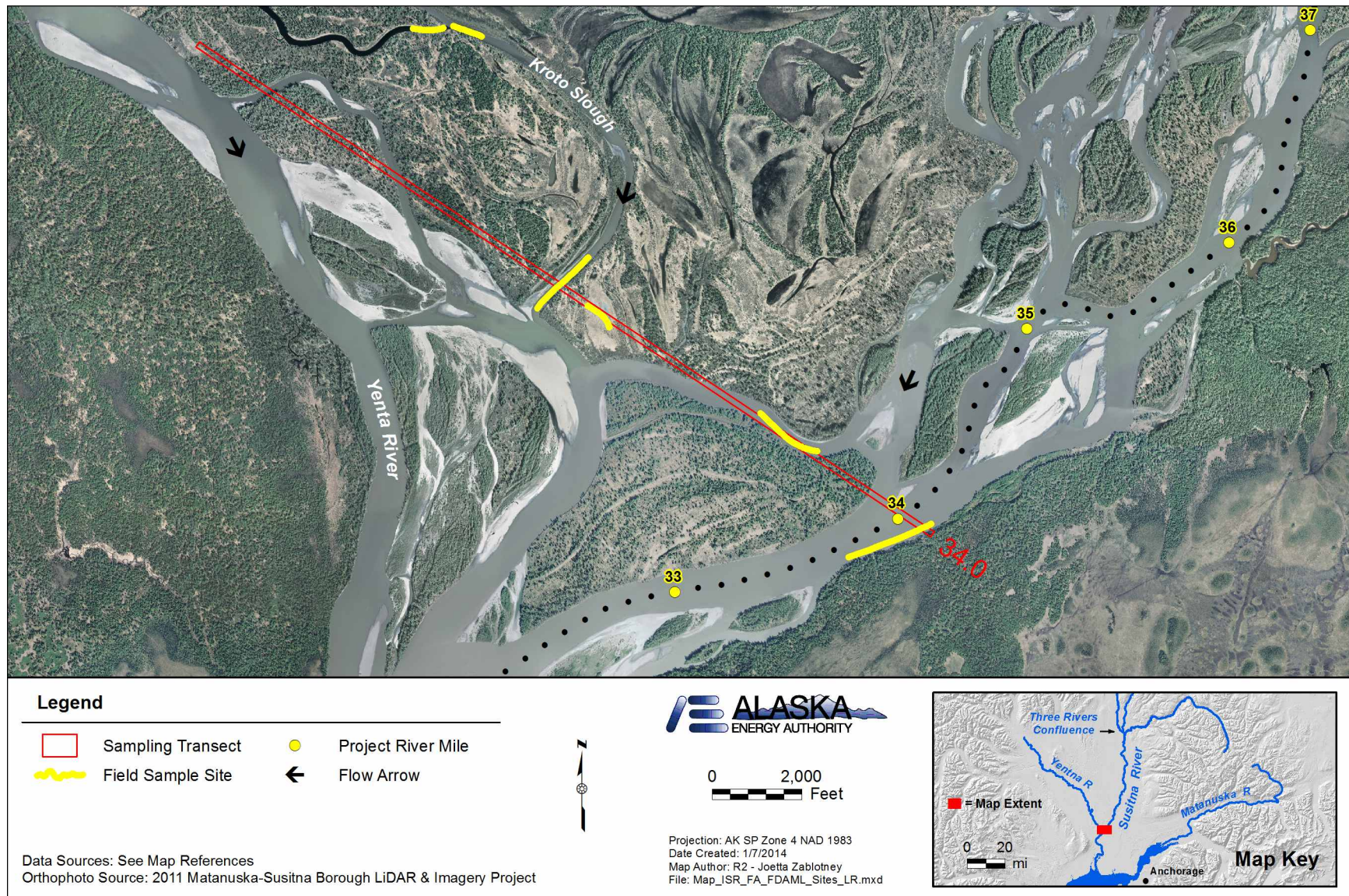


Figure A16. Sites sampled along Lower River transect PRM 34, 2013.