



Aesthetic Resources

Scenery and Soundscape Study Update October 7, 2013



Study Update

- Fall fieldwork update
- Year-to-Date Summary
- Action Items
 - Project viewshed, potential views experienced from Denali NP climbing routes
 - Handling of lack of access to CIRVC lands

Permits Issued for 2013 Surveys

- Ahtna, Incorporated Permit 866 Issued May 15, 2013;
- Ahtna, Incorporated Permit 873 Issued May 21, 2013;
- Alaska Mental Health Trust Revocable License for Land Use Issued May 17, 2013;
- BLM Permit Number AA093571 Issued May 21, 2013;
- State of Alaska Department of Natural Resources Division of Parks and Outdoor Recreation Permit Number LAS 29000 As Amended Issued May 15, 2013;
- State of Alaska Department of Natural Resources Division of Parks and Outdoor Recreation Permit Number LAS 29122 Issued May 17, 2013;
- Matanuska Susitna Borough Land Use Permit MSB006727 Issued June 3, 2013.

Summary of Field Work 2013 Study Year (Visual)

Season	Survey Dates	Number of Analysis Locations
Winter 2013	March 6, 2013 – March 15, 2013	24
Spring 2013	May 13, 2013 – May 22, 2013	34
Summer 2013	July 13, 2013 – July 23, 2013	65
Fall 2013	September 22, 2013 – September 27, 2013	25
TOTAL		148

Distribution of Analysis Locations (Visual) by Project Component

Season	Total Analysis Locations	Reservoir	Dam and Camp Facility Area	Denali Corridor	Chulitna Corridor	Gold Creek Corridor
Winter	24	3	1	8	4	8
Spring	34	7	3	9	7	8
Summer	65	18	3	19	12	13
Fall	25	8	1	6	7	3
TOTAL	148	36	8	42	31	32

Distribution of Analysis Locations (Visual) by Land Status

Season	Total Analysis Locations	ALs By Land Ownership ¹			
		Federal	State	Private	Ahtna, Incorporated
Winter	24	7	16	0	1
Spring	34	5	26	1	2
Summer	65	22	39	0	4
Fall	25	12	12	0	1
TOTAL	148	46	93	1	8

Summary of Field Work 2013 Study Year (Sound)

Season	Trip Dates	Number of Analysis Locations	
		Long-Term	Short-Term
Winter 2013	March 2, 2013 – March 29, 2013	6	7
Spring 2013	May 16, 2013 – June 2, 2013	8	2
Summer 2013	July 9, 2013 – July 23, 2013	8	28
Fall 2013	September 4, 2013 – September 19, 2013	9	32
TOTAL		31	69

Progress Report - Soundscape

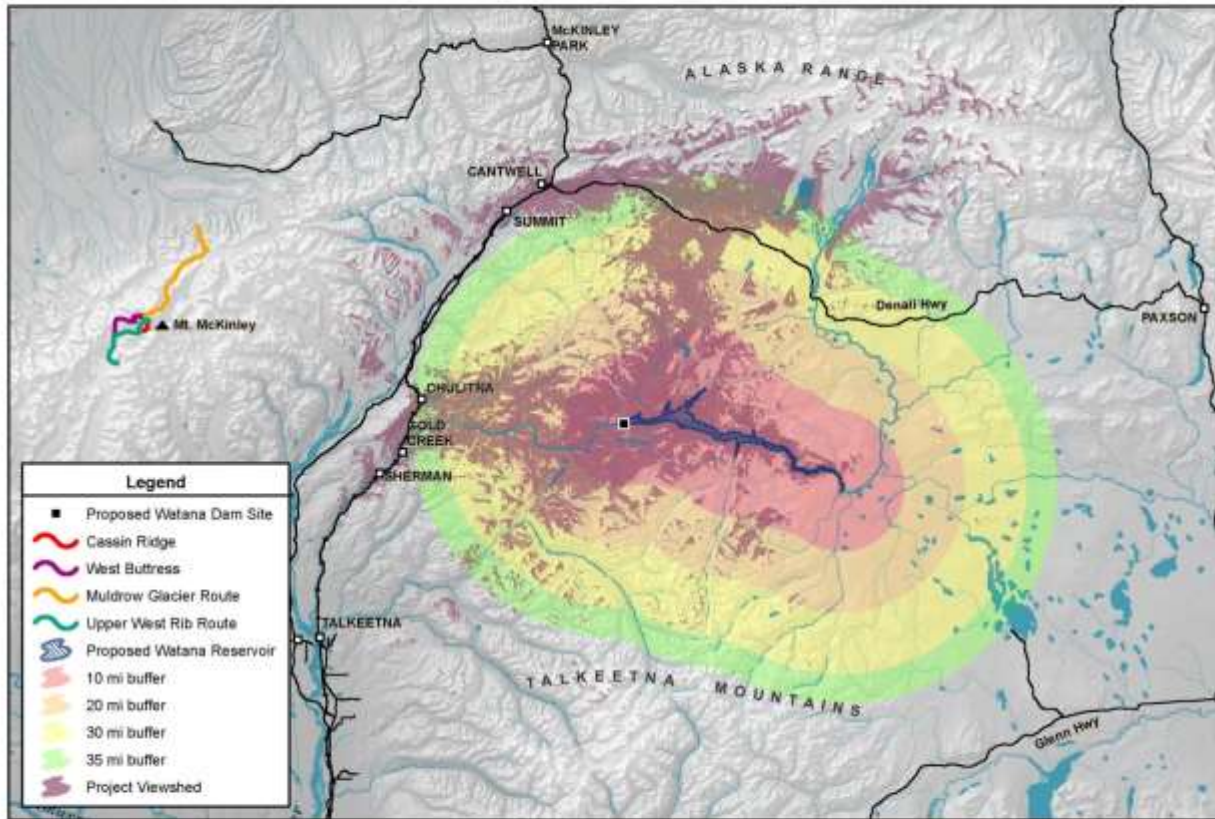
- In total, approximately 3,750 hours of ambient noise measurements have been recorded in the study area
- Approximately 1/3 of the recorded data has been processed, beginning with the winter survey and moving forward chronologically.
- involves reviewing the audio recordings and noise level data hour-by-hour to identify significant sound sources

Action Items

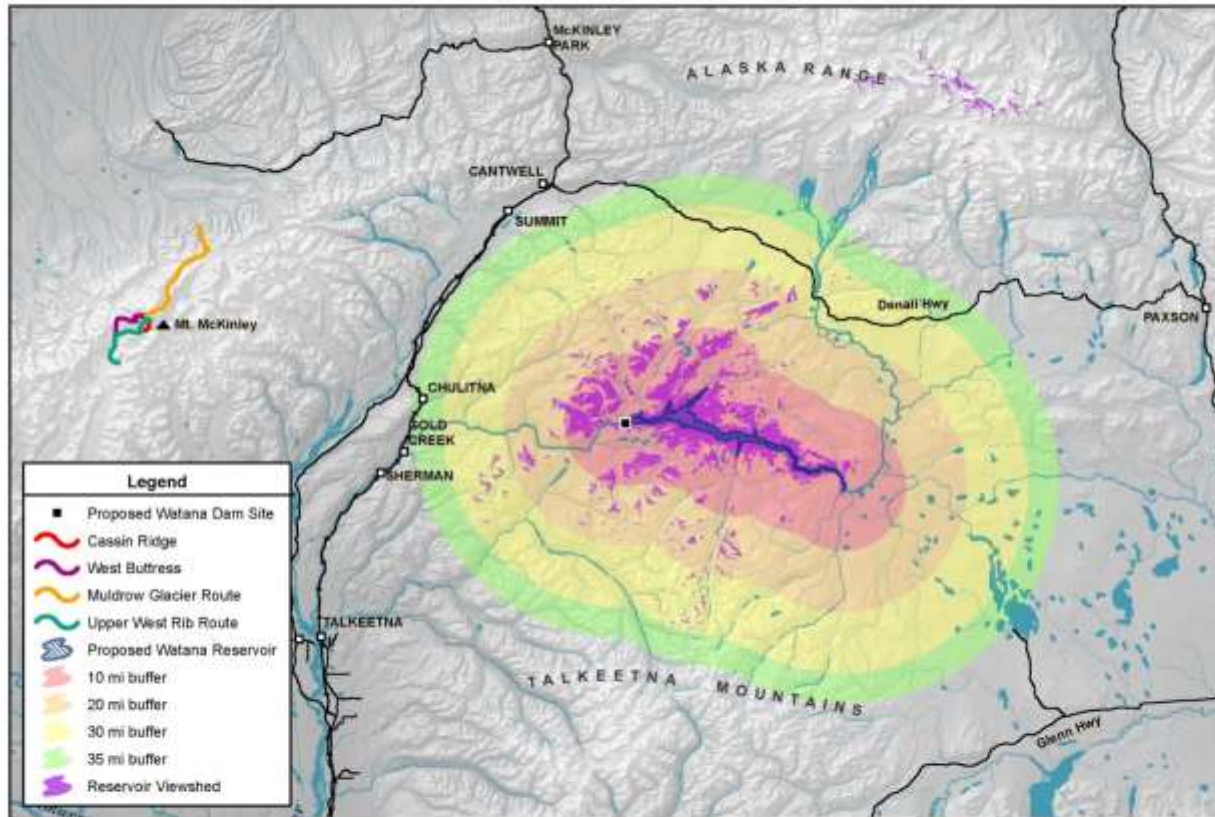
- Project viewshed, potential views experienced from Denali NP climbing routes
- Handling of lack of access to CIRVC lands

Project Viewshed

Denali Climbing Routes



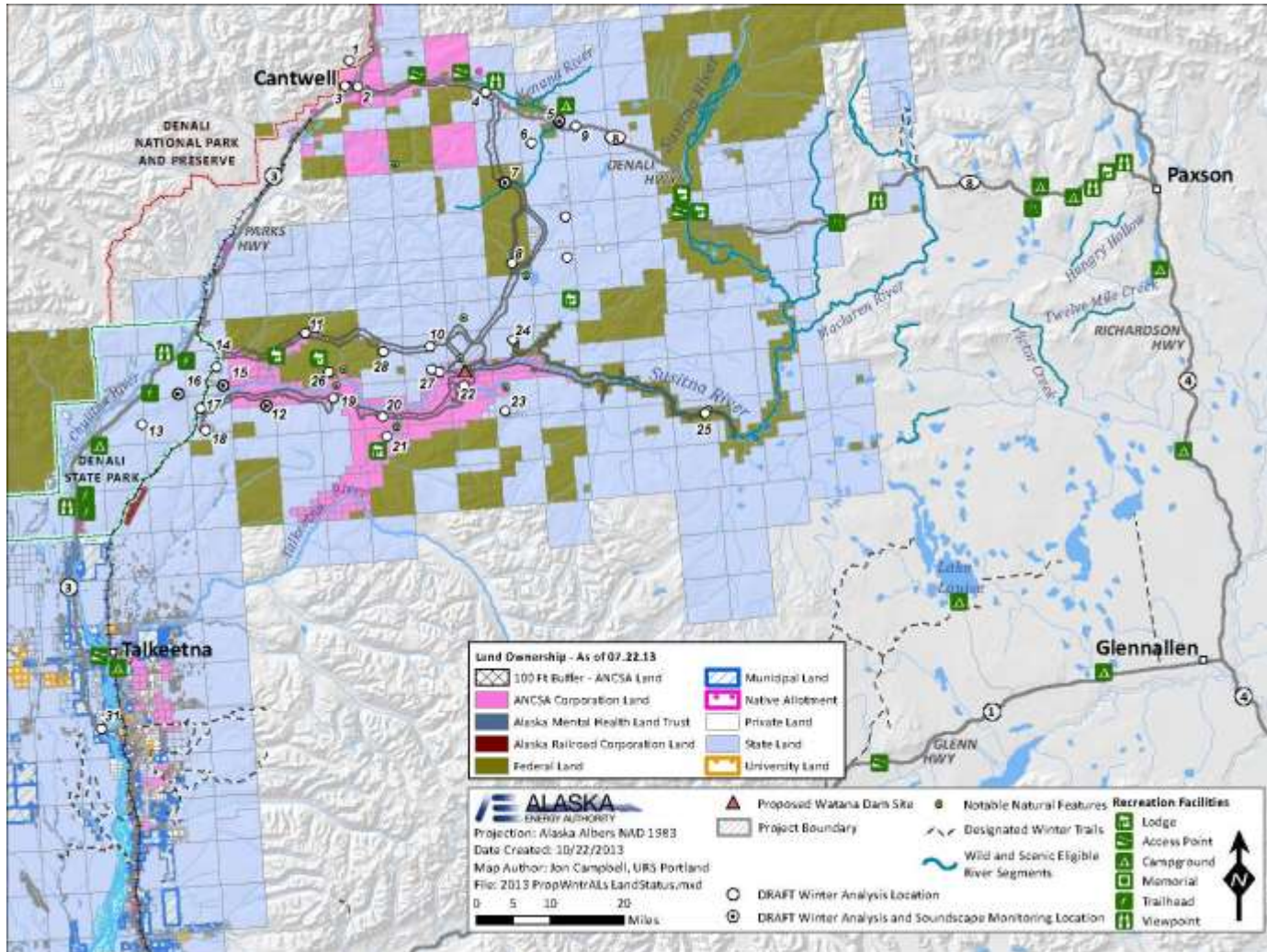
Reservoir Viewshed Denali Climbing Routes



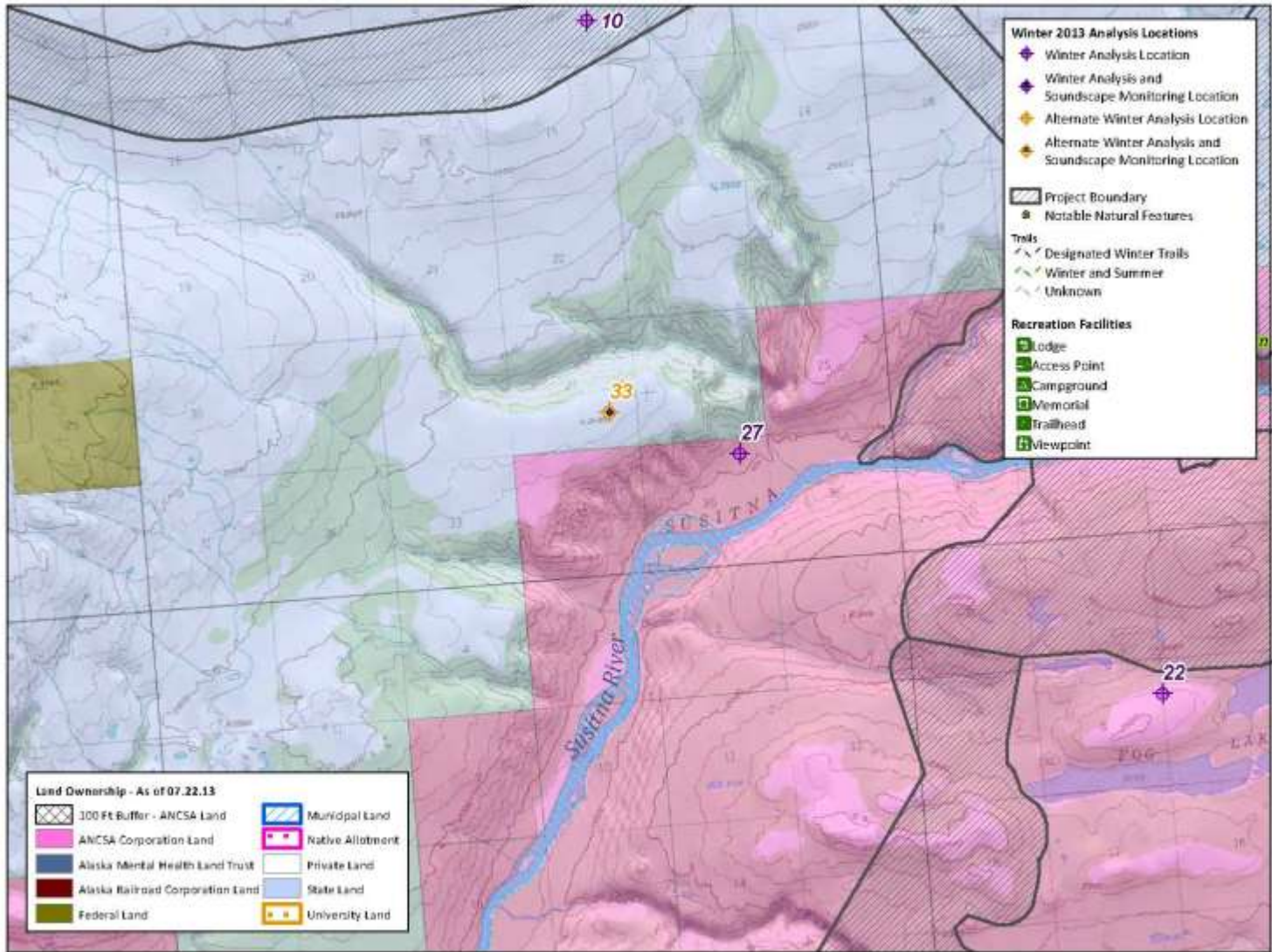
How did we handle lack of access to CIRVC lands?

- For Winter work, we targeted locations across Study Area, regardless of jurisdiction
- Adjusted those locations where we could
- In remaining season, targeted locations proximate to CIRVC lands

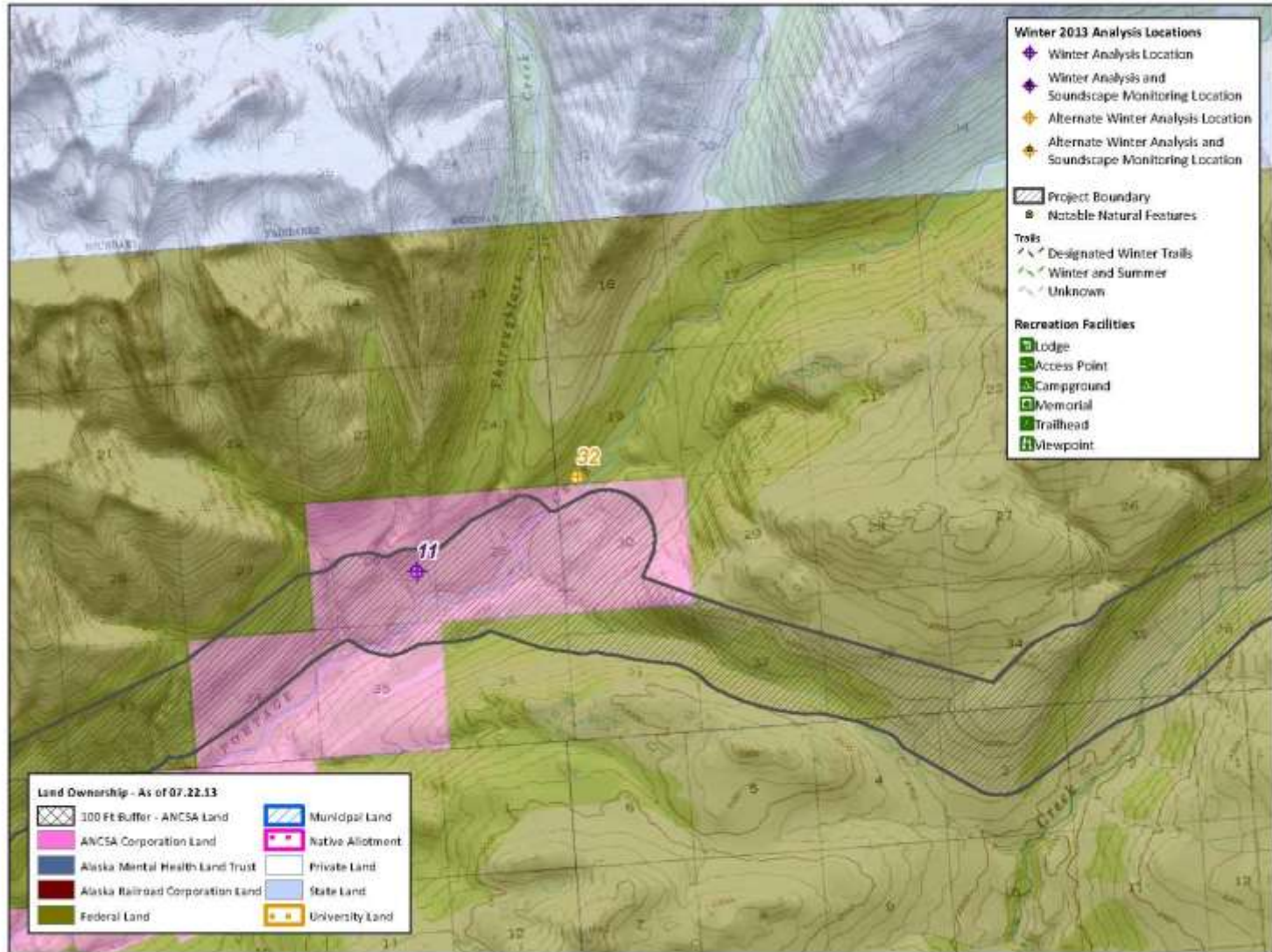
Target Analysis Locations by Land Status (WINTER 2013)



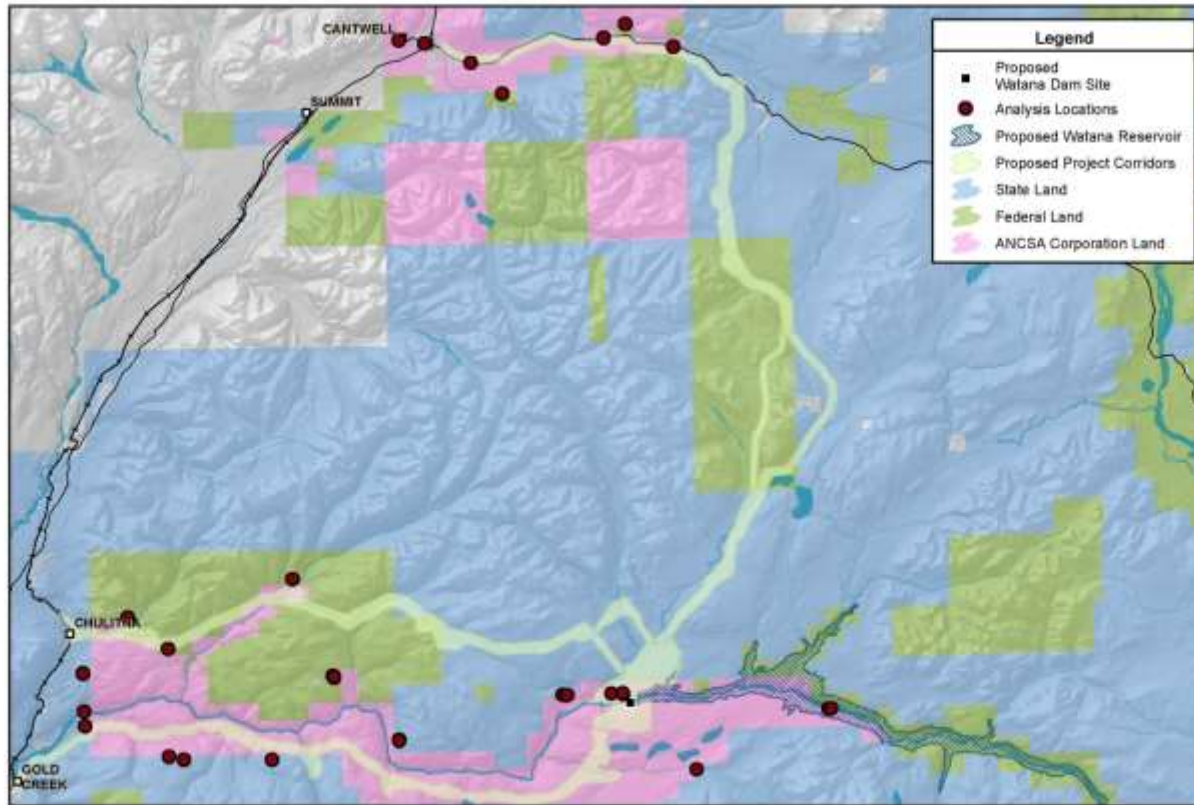
Alternate Analysis Locations (Winter 2013)



Alternate Analysis Locations

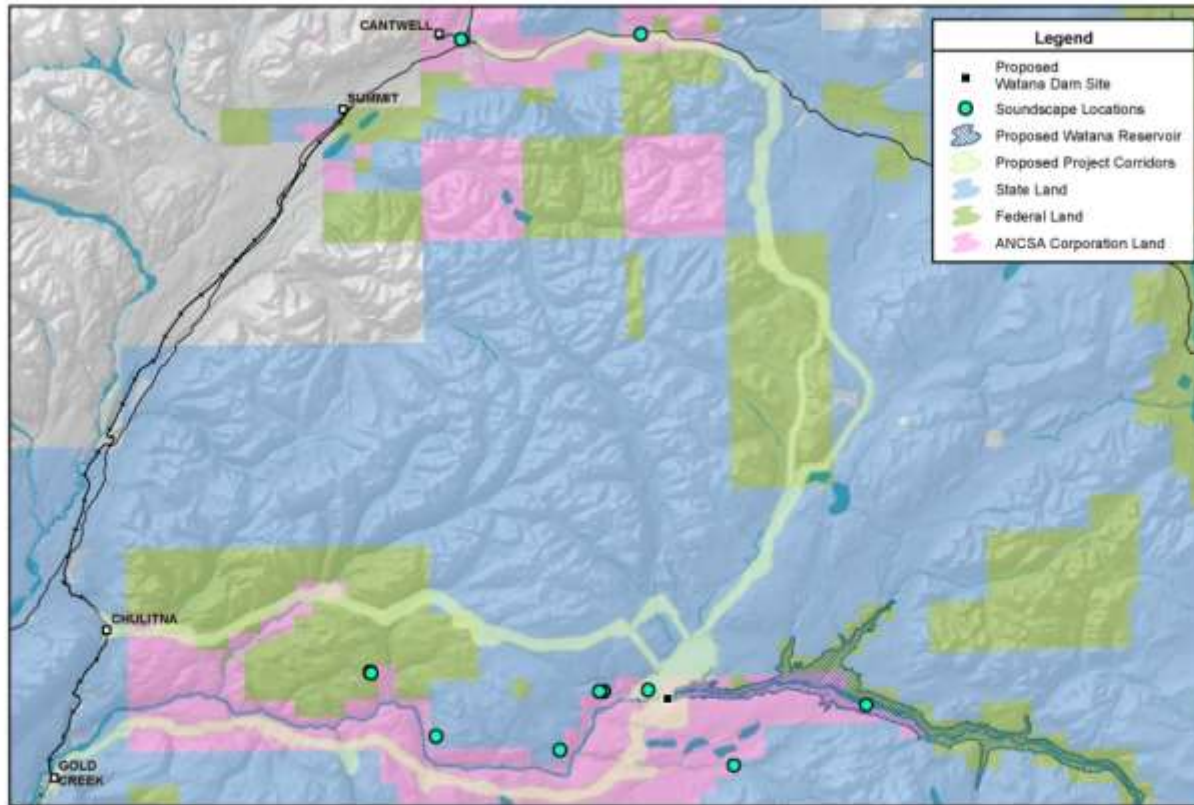


Analysis Locations (Visual 2013) – Within .5 miles of CIRVC & on AHTNA lands



***Ahtna, Incorporated Permit 866 Issued May 15, 2013; Ahtna, Incorporated Permit 873 Issued May 21, 2013;**

Analysis Locations (Soundscape 2013) within .5 miles of CIRVC & on AHTNA lands



*Ahtna, Incorporated Permit 866 Issued May 15, 2013; Ahtna, Incorporated Permit 873 Issued May 21, 2013;

Study Goals

Goals:

- ✓ Evaluate potential impact of transmission & access routes to aesthetic resources
 - Evaluation underway
 - Will address CRVC lands when permitted

- ✓ Evaluate new access-based landscape viewing opportunities
 - Numerous areas identified
 - Continued coordination with Recreation

Study Goals

- ✓ Document potential change in appearance of downstream river attributes
 - Reach 2 & 3 evaluated
 - Ongoing interdisciplinary coordination

- ✓ Evaluate changes in landscape features
 - Ongoing

- ✓ Evaluate changes in views of the river corridor following inundation

Study Goals

- ✓ Evaluate potential change in view from air
 - Ongoing
 - Continued coordination with Recreation

- ✓ Quantifying existing soundscape data
 - Processing results
 - Will turn attention to project construction / operational attributes in coming months

Variations

- ✓ **No variations have been identified to date**
- ✓ Scheduling change for CIRVC lands
- ✓ Work still very much ongoing
- ✓ Still much to learn through Focus Groups

Plans for 2014

- Review of Project Components
- Refinement of Viewshed Analysis
- Development of Photosimulations
- Focus Groups
- Visual Sensitivity

Plans for 2014

- Ongoing Field Data collection
 - CIRVC lands
 - Reach 2 and Reach 3
- Address of potential data gaps
- Impact Analysis
 - Potential Impacts
 - Opportunities
- Potential Design and Mitigation Options
- Project Soundscape modeling