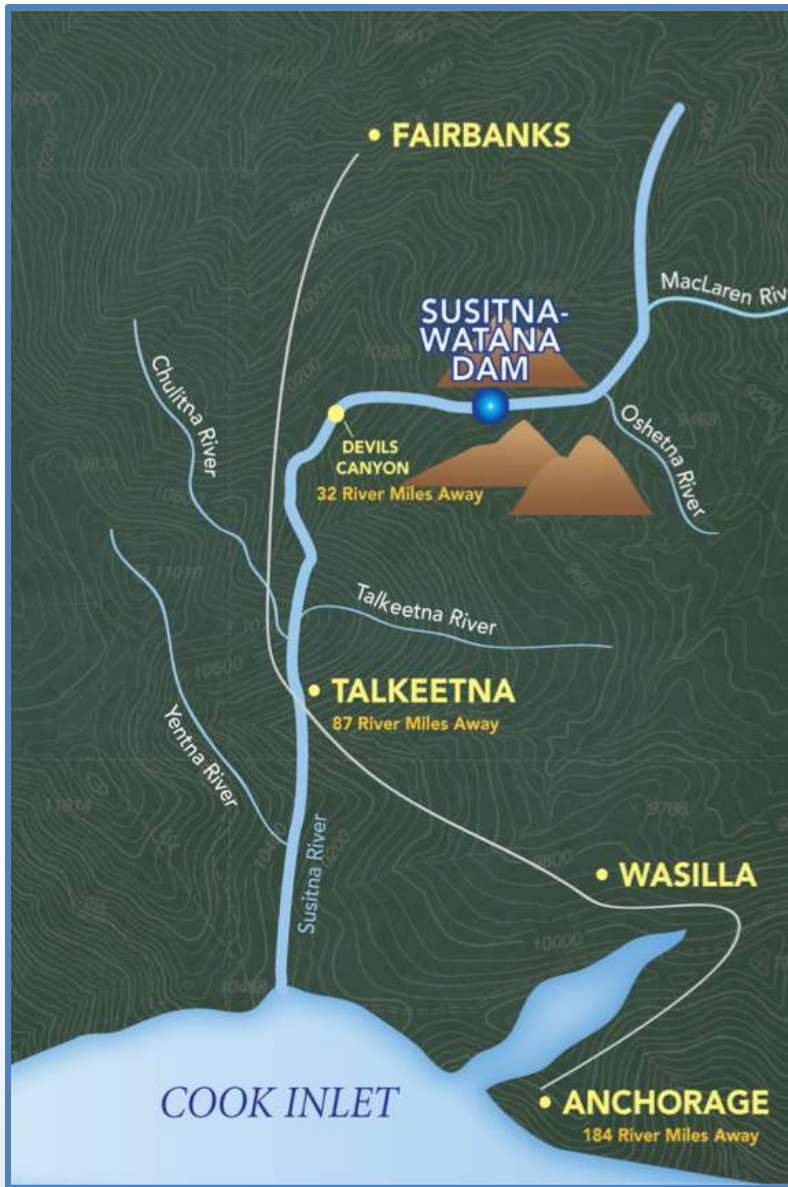


# Technical WorkGroup Meeting Q4 2013 TWG

## *Recreation Resources*

*November 7, 2013*

*Prepared by URS*



# RSP 12.5 Recreation Resources Presentation Overview

2

- *Recreation Inventory Update*
  - *Facilities and Access Points along AK RR*
  - *Trails/infrastructure mapping*
- *Recreation survey data collection*
- *Variances from the FERC-approved Study Plan*
- *Next Steps*

# RSP 12.5 Recreation Resources

3

## *Study Plan Objectives*

### **2013**

- Identify and document **recreation resources and facilities**
- Identify the types and levels of **current recreational uses**

### **2014**

- Identify future **reasonably foreseeable future uses**
- Evaluate the **potential impact mechanisms** of Project construction and operation on recreation resources, needs, and uses
- Develop data to inform development of a **Recreation Management Plan** for the Project.



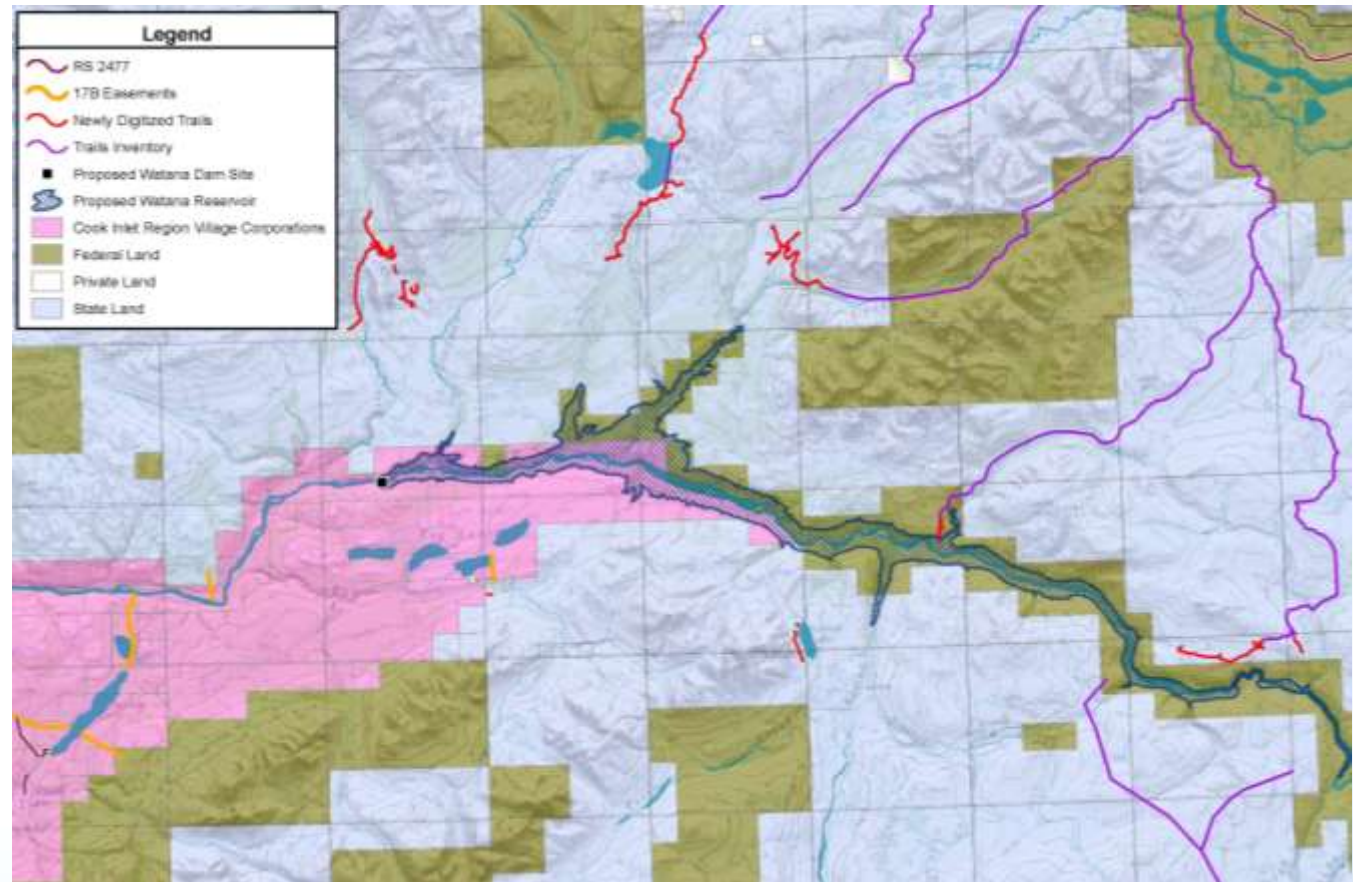
## *Executive Interview Update*

- *To date, 76 interviews conducted (phone/in person)*
  - *Executive interviews for summer activities scheduled for fall/winter*
  - *Continued systematic approach to cover:*
    - *user group,*
    - *organizations,*
    - *agencies,*
    - *geographical regions,*
    - *etc.*



## *Trails Mapping Update*

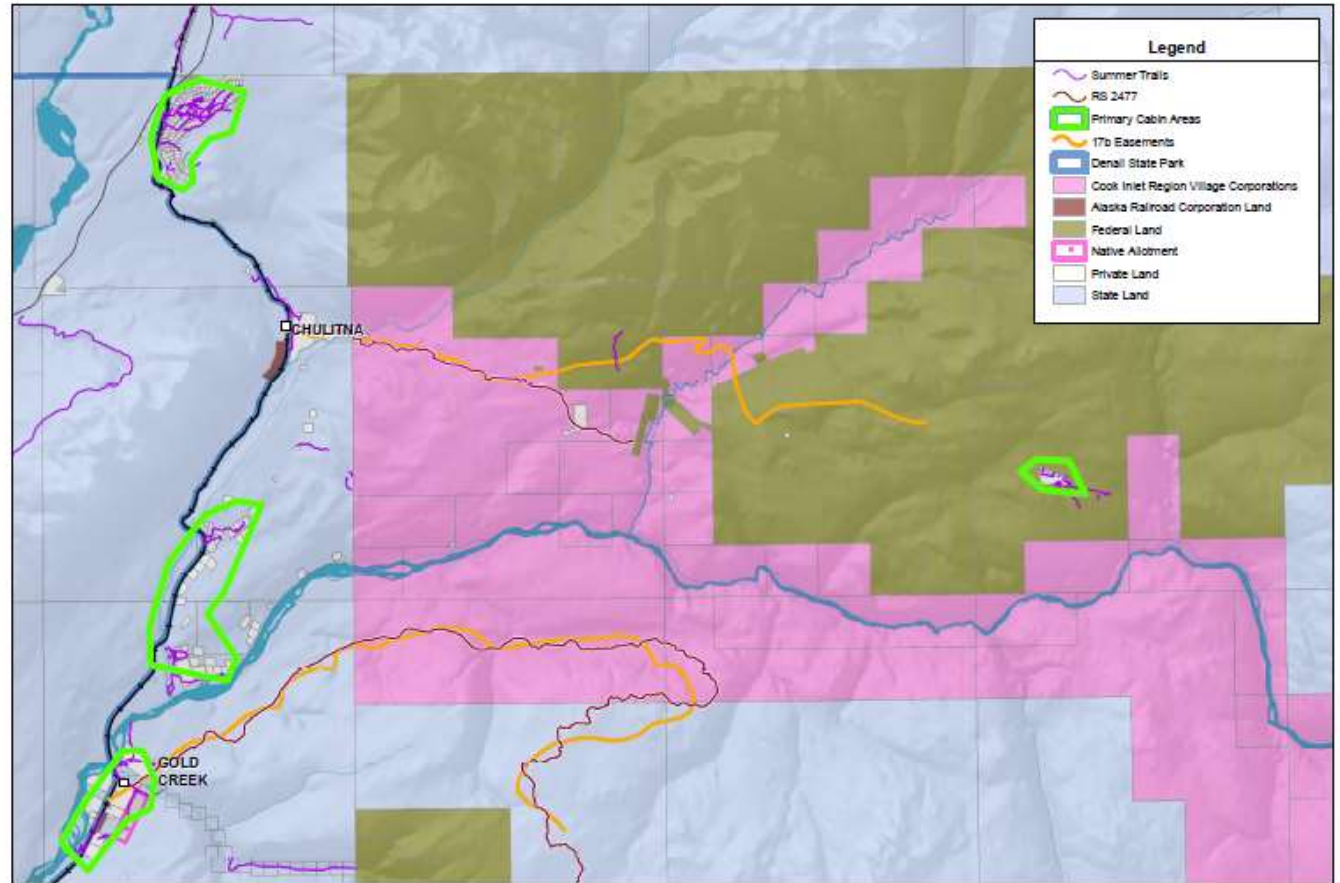
- Existing imagery mapped (Q3 2013)
- New imagery will be mapped (Q4 2013/Q1 2014)
- Accuracy > 1:24,000



# RSP 12.5 Recreation Resources

## *Existing Dispersed Recreation Facilities*

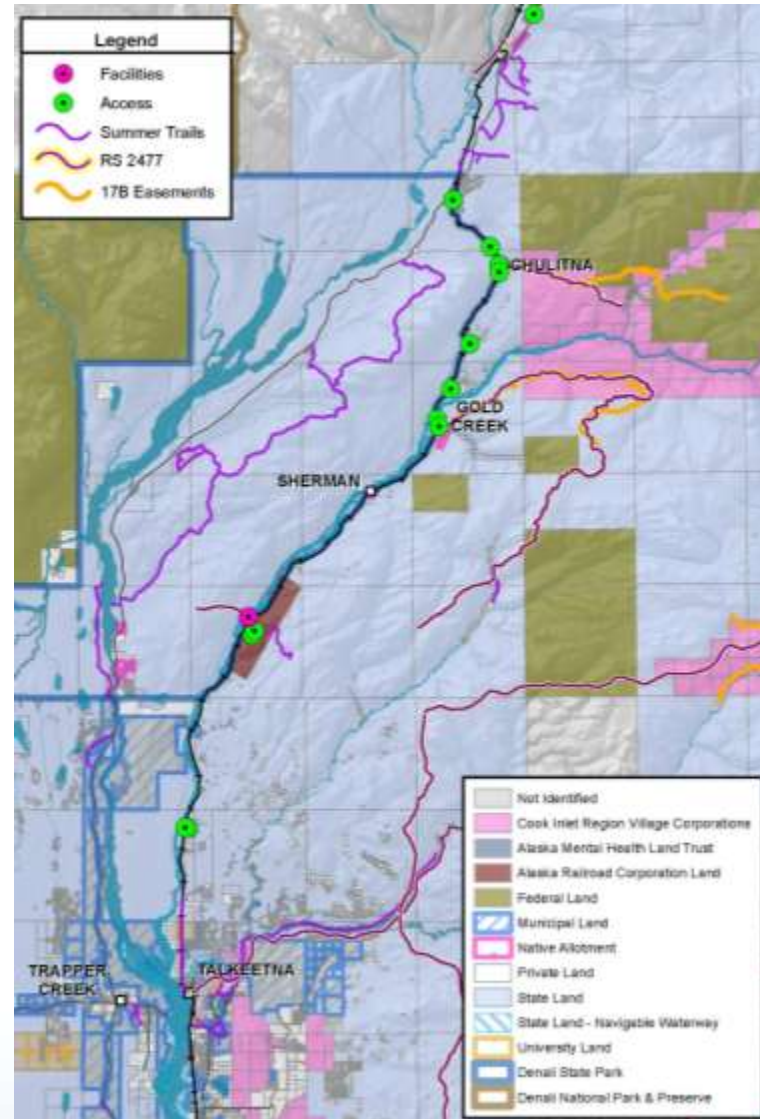
- Identify remote structures
- Primarily private cabins (some or many may not be recreational use cabins)
- Destination/starting point for user generated trails



# RSP 12.5 Recreation Resources

## AK Railroad Recreation Inventory

- *Facilities and Access Points (Q3 2013)*
  - Day Use Area
  - Public trails access
  - Access to Susitna River
  - Access tributaries



# RSP 12.5 Recreation Resources

## Plan for Q1 2014

- Executive interviews
- Trails mapping using new imagery
- Winter trail/route verification
- Revise trail classification methodology based on fall trail assessment
- Continued interdisciplinary coordination





# RSP 12.5 Recreation Resources Study Progress

- Intercept Survey
  - Ongoing
  - Completed ~1,020 surveys (as of 10/17/13)
  - Fielding in Talkeetna, Lake Louise, Paxson, Parks Highway (Y-Cantwell), East and West Denali Highway
  - RV crew ended in September 2013
  - Shifted to winter sampling plan on October 10, 2013 (Denali Highway closure)



# Update of 2013 Recreation Resources Study Progress

- Intercept Survey
  - Completed ~2,500 observational intercept tallies (as of 10/17/13)
  - “Leave Behind Cards” distribution ongoing (online survey), ~101 completed online (as of 10/17/13)
  - Data entry ongoing and keeping pace



# Update of 2013 Recreation Resources Study Progress

- 1st mail survey (June-August)
  - Completed ~1,751 surveys (as of 10/17/13), of which ~317 completed online
  - ~25% response rate
  - Shared raw survey data with Socioeconomic Study
  - Aug. 26-Sept. 3, 2013 — 424 non-response bias telephone survey conducted. Results used to assess weighting of survey data.

# Update of 2013 Recreation Resources Study Progress

- Socioeconomic section revised in October survey
- No questions removed, new questions added:
  - *Total number of days/nights recreating in the Study Area*
  - *How many in party under age 18*
  - *How many in party live in household*
- Sample increased (8,436 households) to include more local/Study Area residents, such as all unduplicated voter households in:  
Cantwell, Paxson, Gulkana, Gakona, and Lake Louise



# Update of 2013 Recreation Resources Study Progress

- 2nd mail survey mailing schedule
  - Oct. 21: Pre-mailer postcard mailed
  - Oct. 24: Survey booklet (16 pages) mailed
  - Nov. 13: Post-mailer postcard mailed
  - Nov. 14: Initial due date
  - Nov. 15: Second mailing to nonrespondents
  - Nov. 30: Final due date
  - Dec. 31: Survey closed
- Non-response bias phone survey to be



# Update of 2013 Recreation Resources Study Progress

- Executive Interviews
  - Coordinating interviews with River Recreation and Recreation Resources to avoid duplication of effort or interviewee “fatigue”
  - Entered interview notes into recreation resources team executive interview database
  - Additional interviews (summer and winter recreation) to be conducted in Q3/Q4



# Update of 2013 Recreation Resources Study Progress

- Continued Interdisciplinary Coordination
  - Aesthetics, River Recreation, Socioeconomics, Social Conditions and Public Goods and Services, Transportation
- Preparation of Initial Study Report

