

Susitna-Watana  
Hydroelectric Project  
Terrestrial Wildlife Resources  
ADF&G Project Updates  
September 2013

Mark Burch and Kimberly King Jones



The Wildlife Study Plans will provide baseline data for assessments of potential Project impacts.



ADF&G is involved in six of the Terrestrial Wildlife Studies in the Susitna-Watana Project vicinity.

- **Moose**
- **Caribou**
- **Dall's Sheep**
- **Wolverines**
- **Large Carnivores\***
- **Ptarmigan**



ADF&G is monitoring the distribution, abundance, productivity, and survival of **moose** in the Project vicinity.

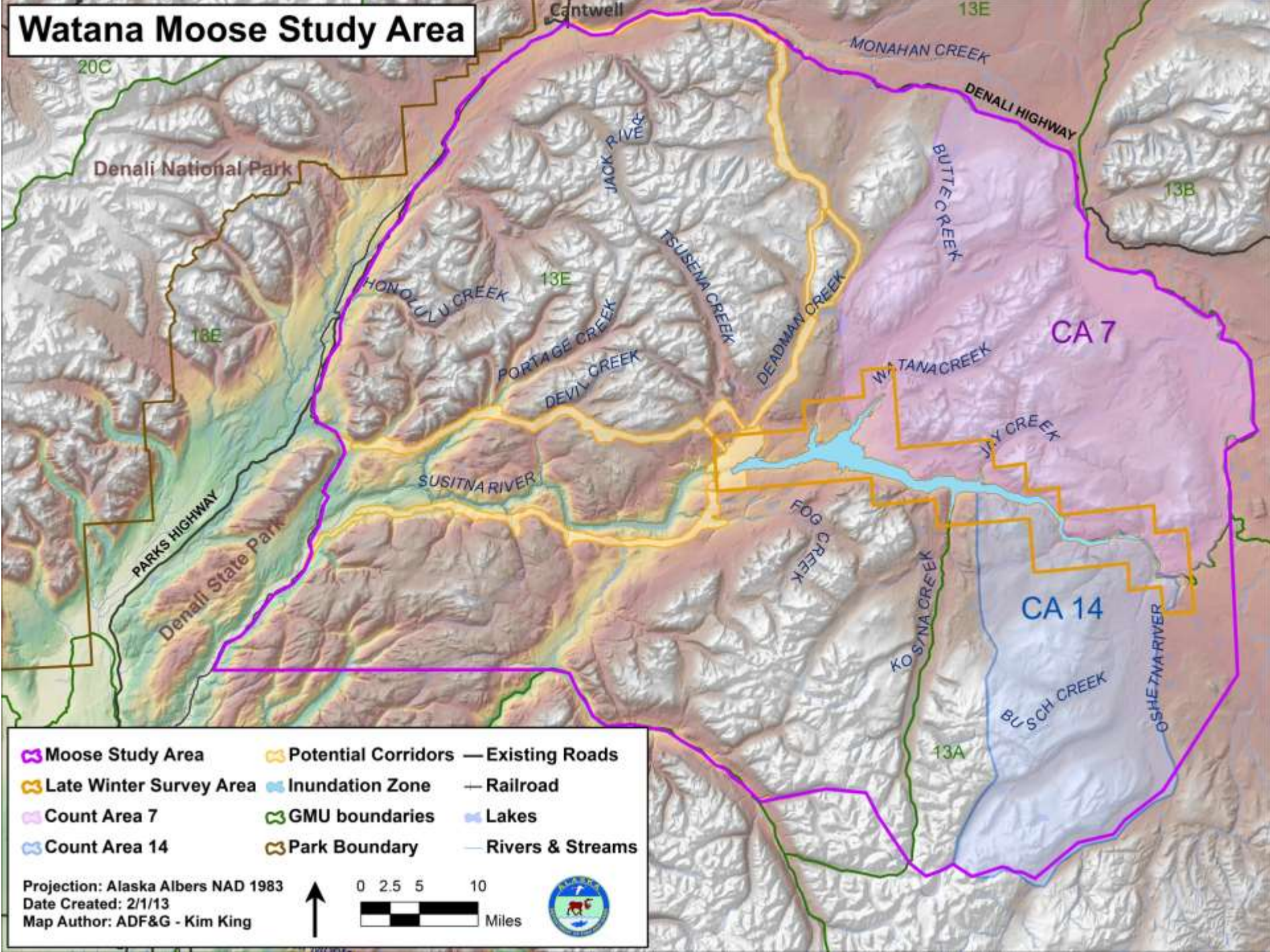
This study involves:

- Monitoring ARGOS Satellite-linked GPS collars
- Monthly Telemetry of VHF Radio collars
- A GeoSpatial Population Estimation (GSPE) Survey
- Traditional Count Area Surveys
- Late Winter Inundation Surveys
- Twinning/Calving Surveys
- Browse Surveys



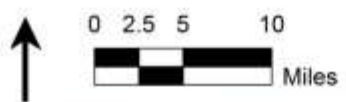
Photo by Kim  
King ADF&G

# Watana Moose Study Area



- |                         |                     |                  |
|-------------------------|---------------------|------------------|
| Moose Study Area        | Potential Corridors | Existing Roads   |
| Late Winter Survey Area | Inundation Zone     | Railroad         |
| Count Area 7            | GMU boundaries      | Lakes            |
| Count Area 14           | Park Boundary       | Rivers & Streams |

Projection: Alaska Albers NAD 1983  
 Date Created: 2/1/13  
 Map Author: ADF&G - Kim King



100 Moose VHF and GPS collars have been deployed in the study area.



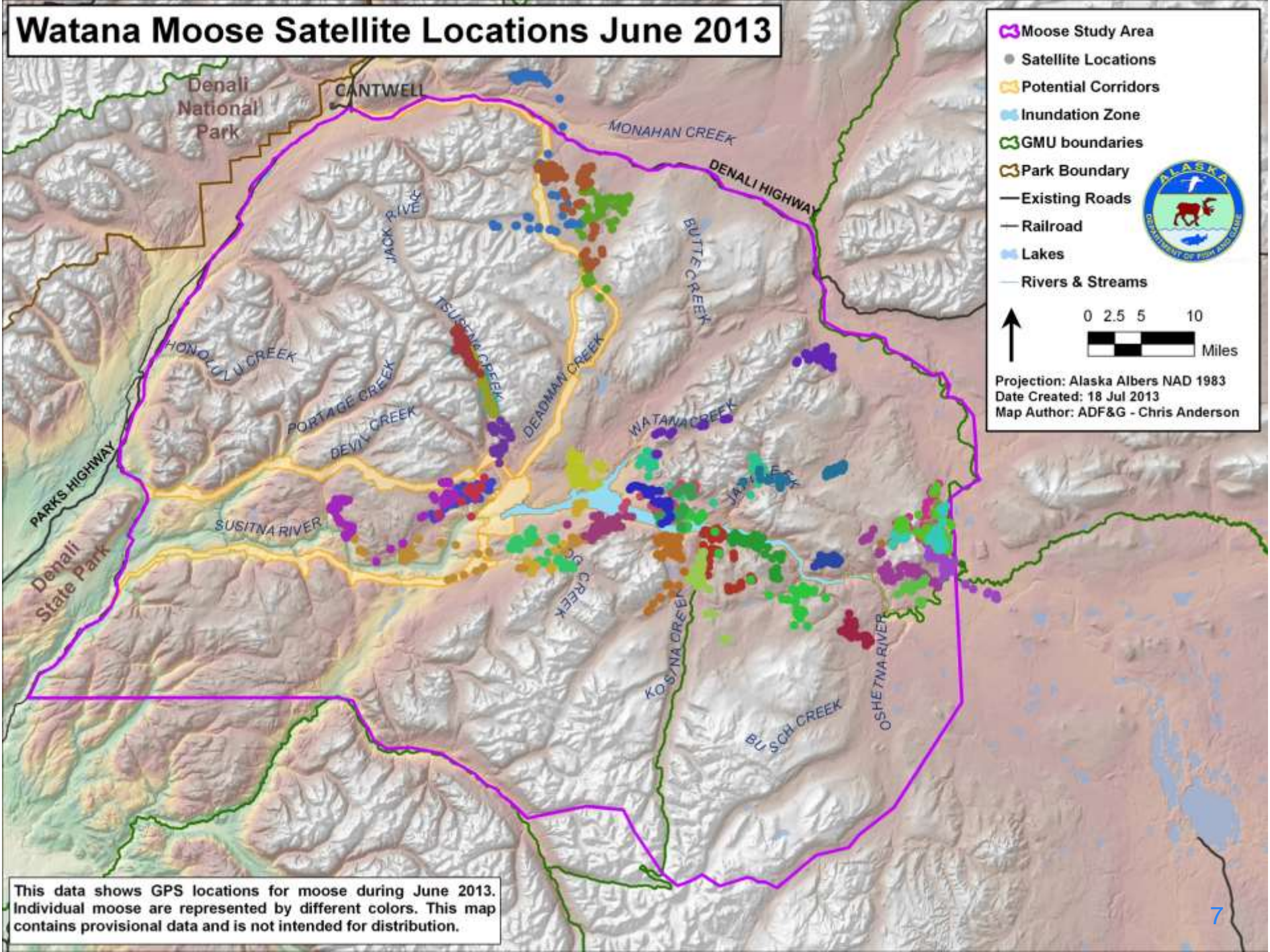
Photo by Kim King ADF&G



Photo by Kim Jones ADF&G

Collar Type	Sex	Oct 2012	Mar 2013	Total
VHF	Bulls	3	17	20
	Cows	7	33	40
GPS	Bulls	14	0	14
	Cows	26	0	26
TOTAL		50	50	100

# Watana Moose Satellite Locations June 2013



- Moose Study Area
- Satellite Locations
- Potential Corridors
- Inundation Zone
- GMU boundaries
- Park Boundary
- Existing Roads
- Railroad
- Lakes
- Rivers & Streams



0 2.5 5 10  
Miles

Projection: Alaska Albers NAD 1983  
Date Created: 18 Jul 2013  
Map Author: ADF&G - Chris Anderson

This data shows GPS locations for moose during June 2013. Individual moose are represented by different colors. This map contains provisional data and is not intended for distribution.

# ADF&G conducted moose twinning surveys May-June to assess productivity and calf survival.

60 cows located

57 calves born

44 cows with calves

13 cows with twins

---

73% of cows were parturient

30% of parturient cows had twins



Photo by Kim Jones ADF&G

57 calf births

25 calf deaths by June 10

27 calf deaths by July 1

---

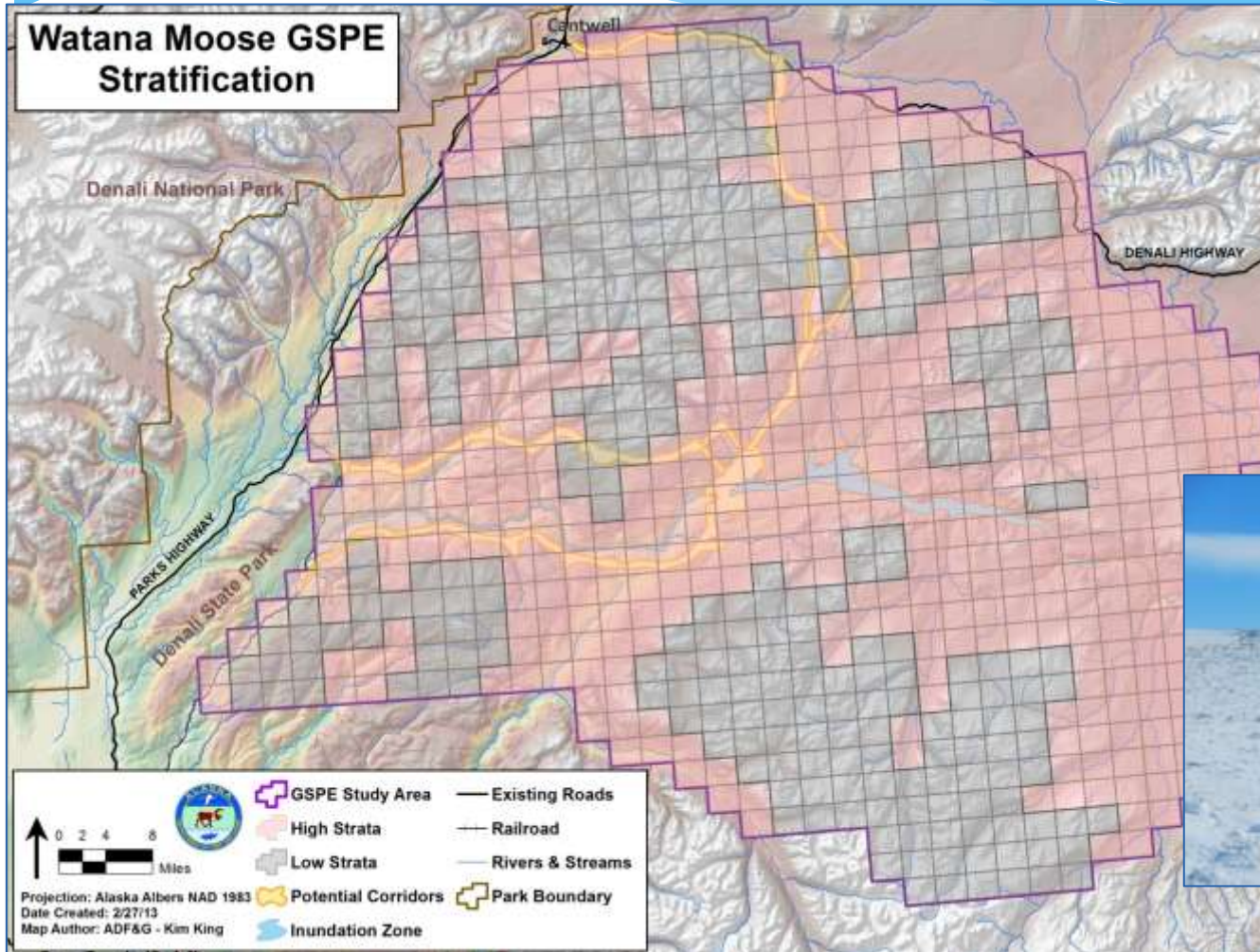
53% of calves survived to July 1

74% of calf deaths within 1<sup>st</sup> week of observation

Photo by Kim Jones ADF&G



# A moose GeoSpatial Population Estimation Survey is planned for November 2013 or March 2014.



ADF&G conducted late winter surveys in the proposed inundation zone March 2012 and 2013.

**427 moose  
were counted in  
2012 & 2013**

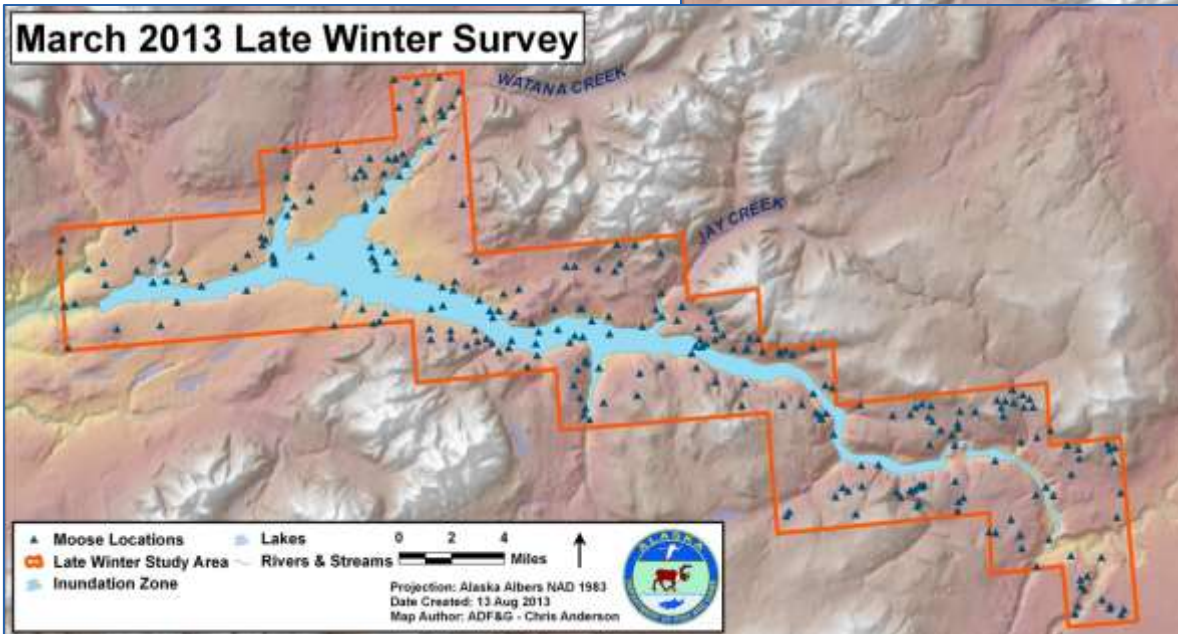
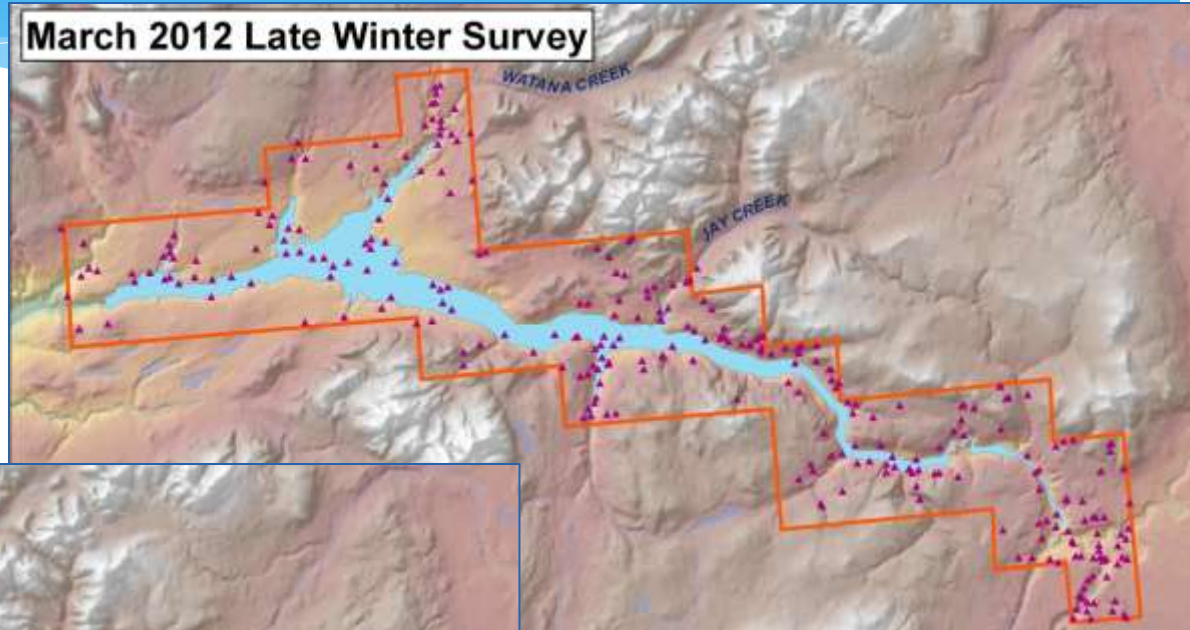
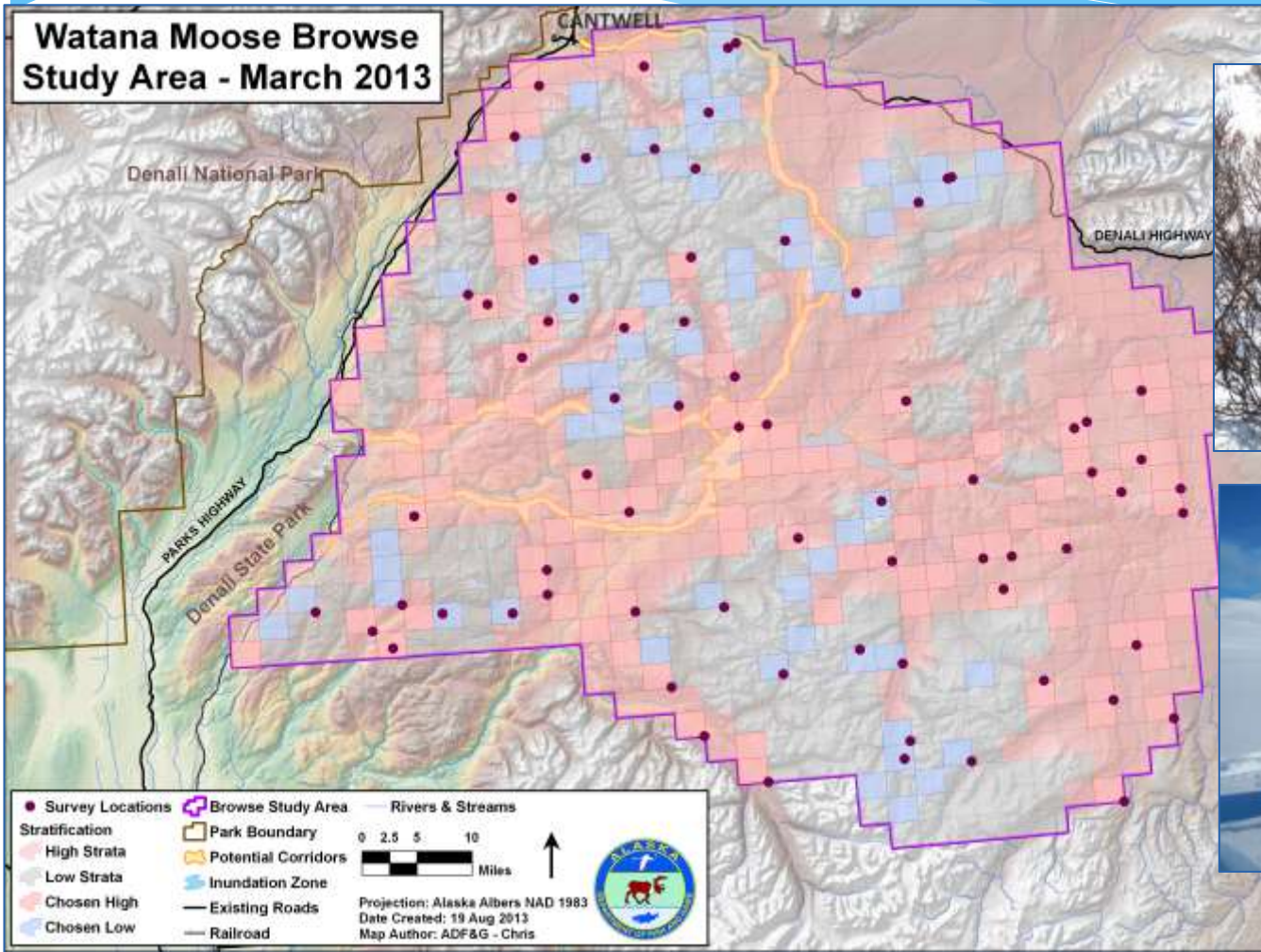
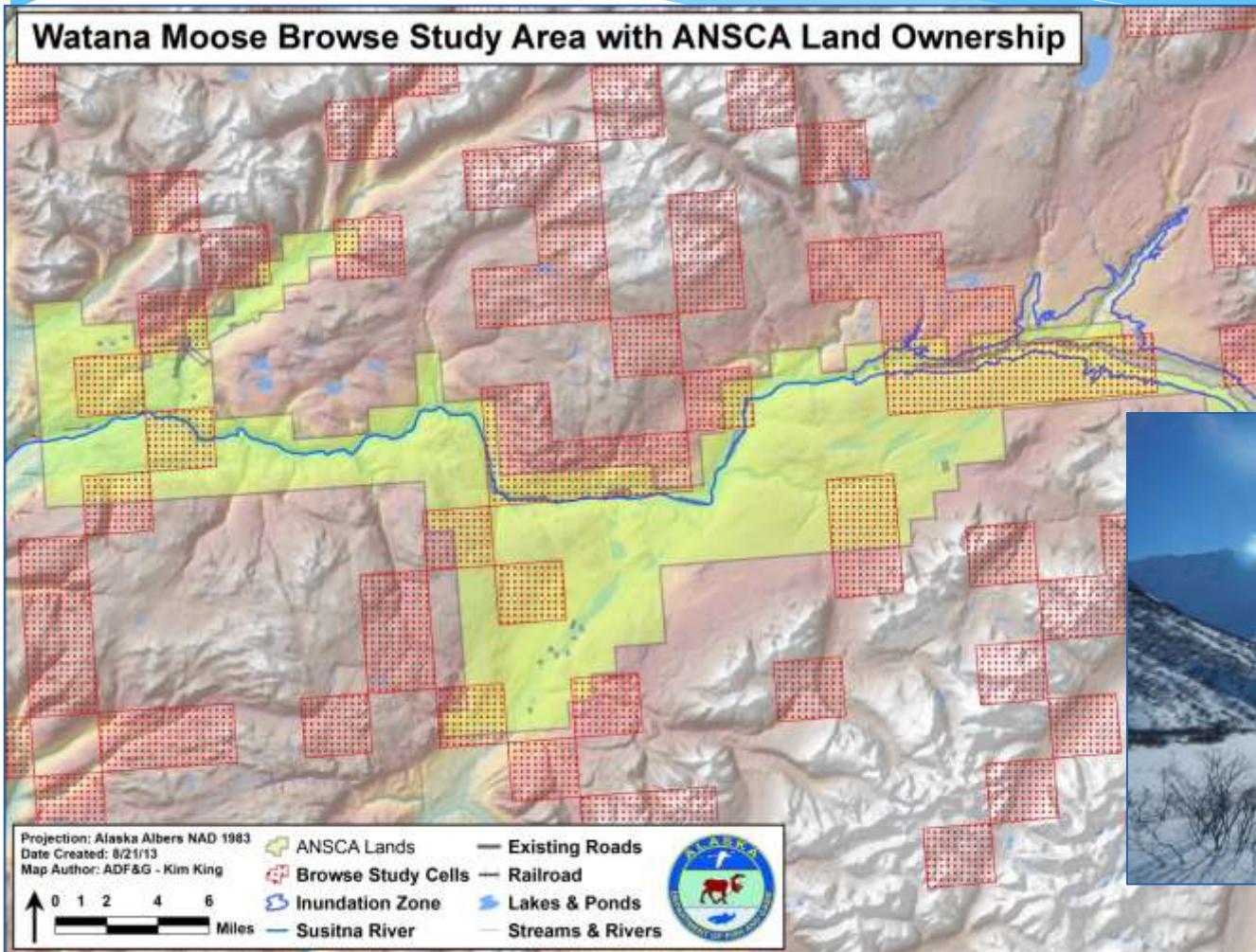


Photo by Kim Jones ADF&G

March 2013 Browse Surveys will be used to calculate the % biomass consumed by moose in the Project vicinity.



We are hoping to obtain land-access permission for Browse Surveys on ANSCA corporation lands for the March 2014 Browse Surveys.



ADF&G is monitoring the distribution, abundance, movements, and productivity of Nelchina and Delta **caribou** in the Project vicinity.

This study involves:

- Monthly Telemetry of VHF Radio collars
- Monitoring ARGOS Satellite-linked GPS collars
- Calving Surveys



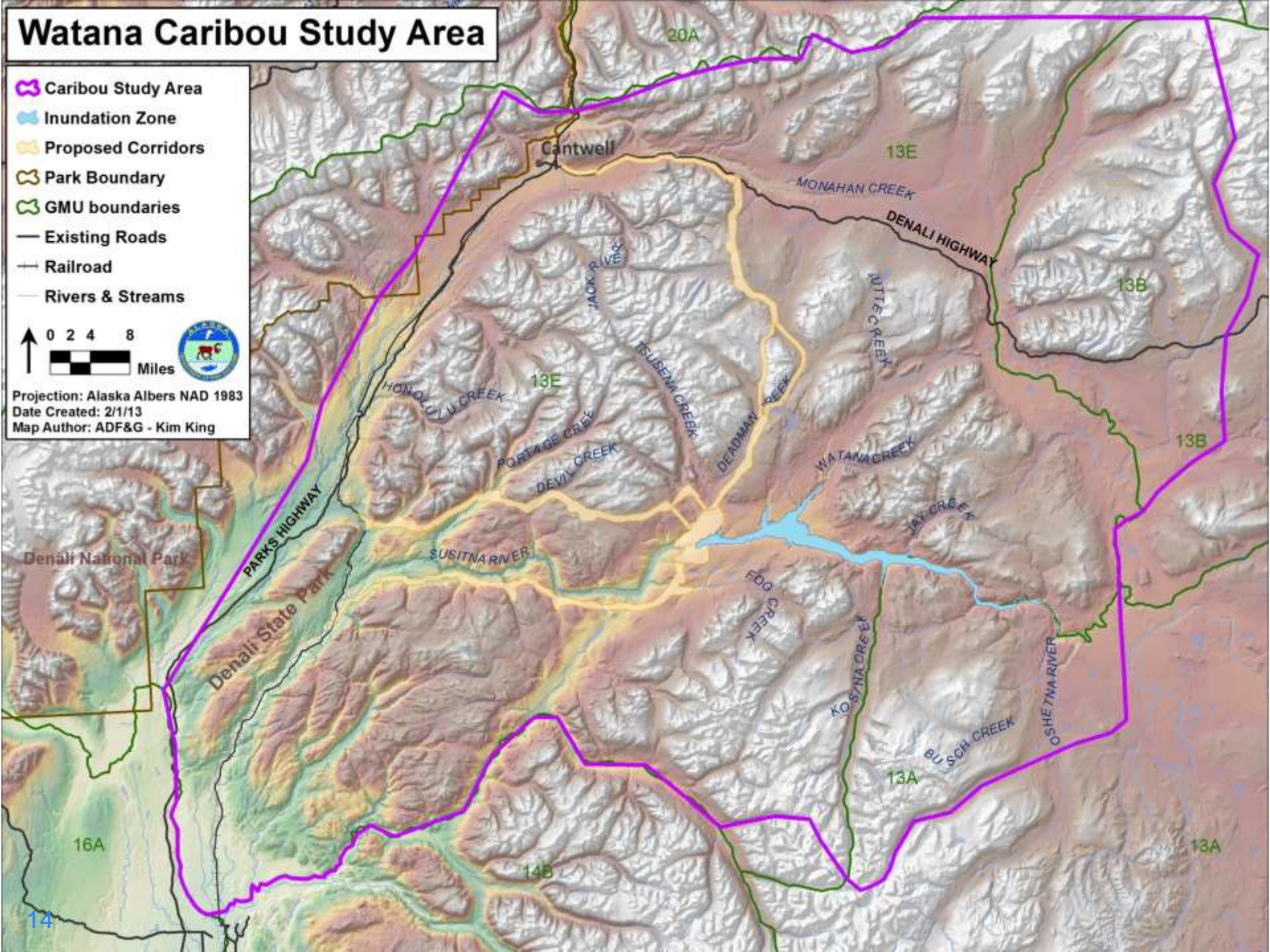
# Watana Caribou Study Area

-  Caribou Study Area
-  Inundation Zone
-  Proposed Corridors
-  Park Boundary
-  GMU boundaries
-  Existing Roads
-  Railroad
-  Rivers & Streams

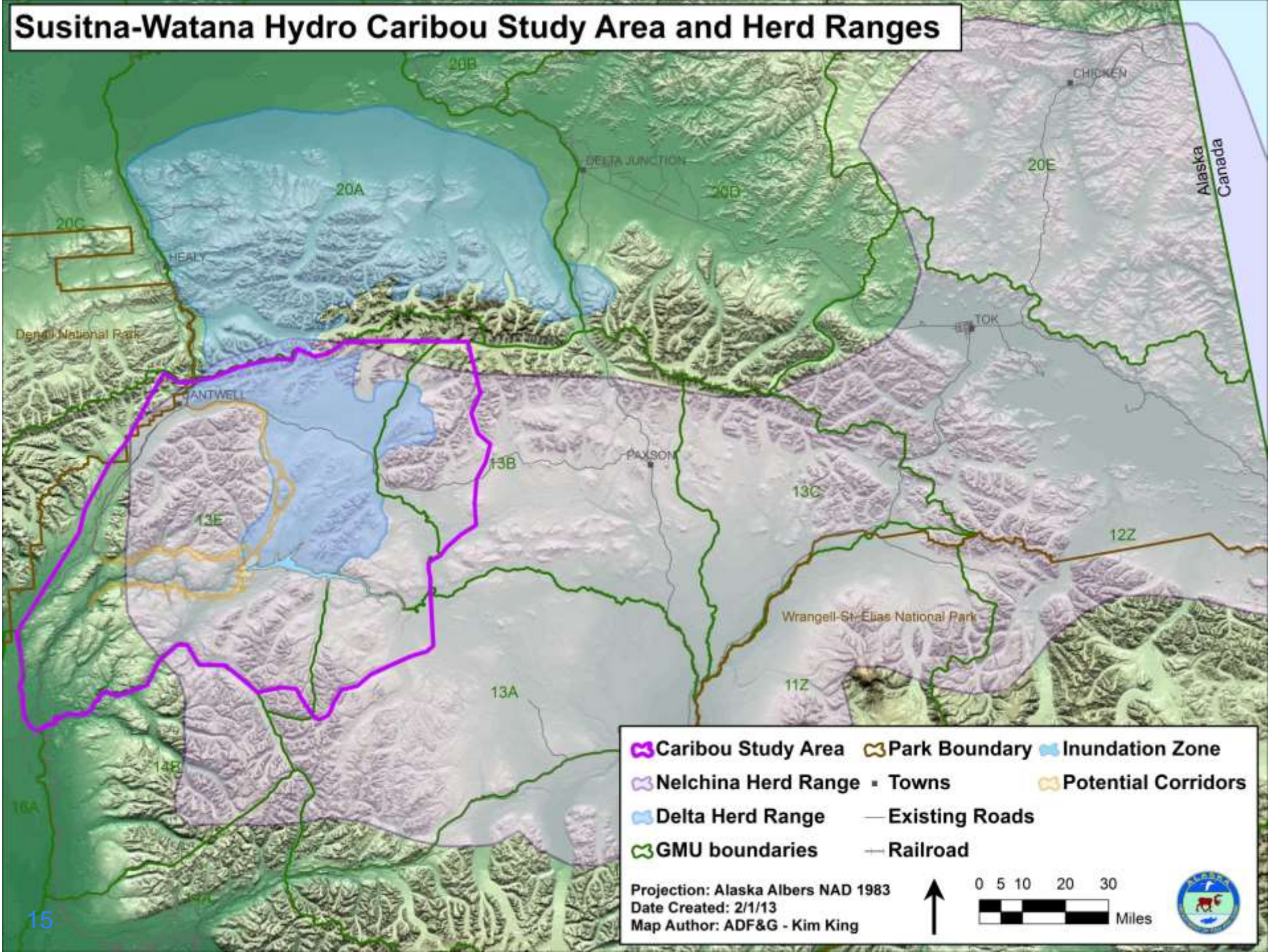
0 2 4 8 Miles



Projection: Alaska Albers NAD 1983  
Date Created: 2/1/13  
Map Author: ADF&G - Kim King



# Sisitna-Watana Hydro Caribou Study Area and Herd Ranges





**Legend:**

- Caribou Study Area
- Park Boundary
- Inundation Zone
- Nelchina Herd Range
- Delta Herd Range
- GMU boundaries
- Towns
- Potential Corridors
- Existing Roads
- Railroad

Projection: Alaska Albers NAD 1983  
Date Created: 2/1/13  
Map Author: ADF&G - Kim King

0 5 10 20 30 Miles



## Caribou Captures 2012

Collar Type	Sex	Apr 2012	Oct 2012	Apr 2013	Total
VHF	Bulls	15	15	9	39
GPS	Bulls	8	10	9	27
	Cows	0	42	1	43
<b>TOTAL</b>		<b>23</b>	<b>67</b>	<b>19</b>	<b>109</b>



Photo by Kim Jones ADF&G



Photo by Kim King ADF&G



Photo by Kim Jones ADF&G



# Caribou Radiotracking Flights June-July 2013

Dates	Season	# Caribou Collared	Total Located	# in Study Area	# in Rest of Range	Flight Area/Plan
June 3-6	summer	174 cows	107	50	57	study & calving areas (cows w/ calves only)
June 11-13	summer	174 cows	108	65	43	study & calving areas (cows w/ calves only)
June 19-21	summer	214 total	123	59	64	study & calving areas (VHF cows and bulls)
June 25-30	summer	174 cows	36	16	20	study & calving areas (cows w/ calves only)
July 1-2	summer	165 VHF	9	9	0	study & calving areas (cows w/ calves only)
July 15-16	summer	165 VHF	95	91	4	study & calving areas (VHF cows and bulls)

# ADF&G conducted caribou calving surveys May-June to assess productivity and calf survival.

128 cows located

84 cows parturient

39 calves lost

---

66% of cows were parturient

46% of calves lost

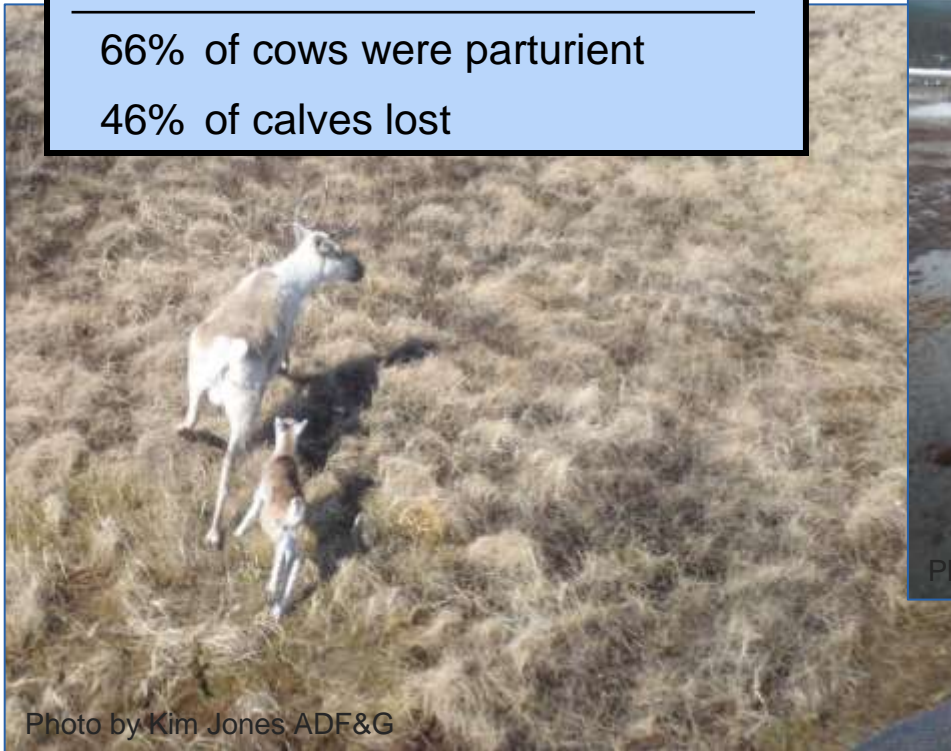


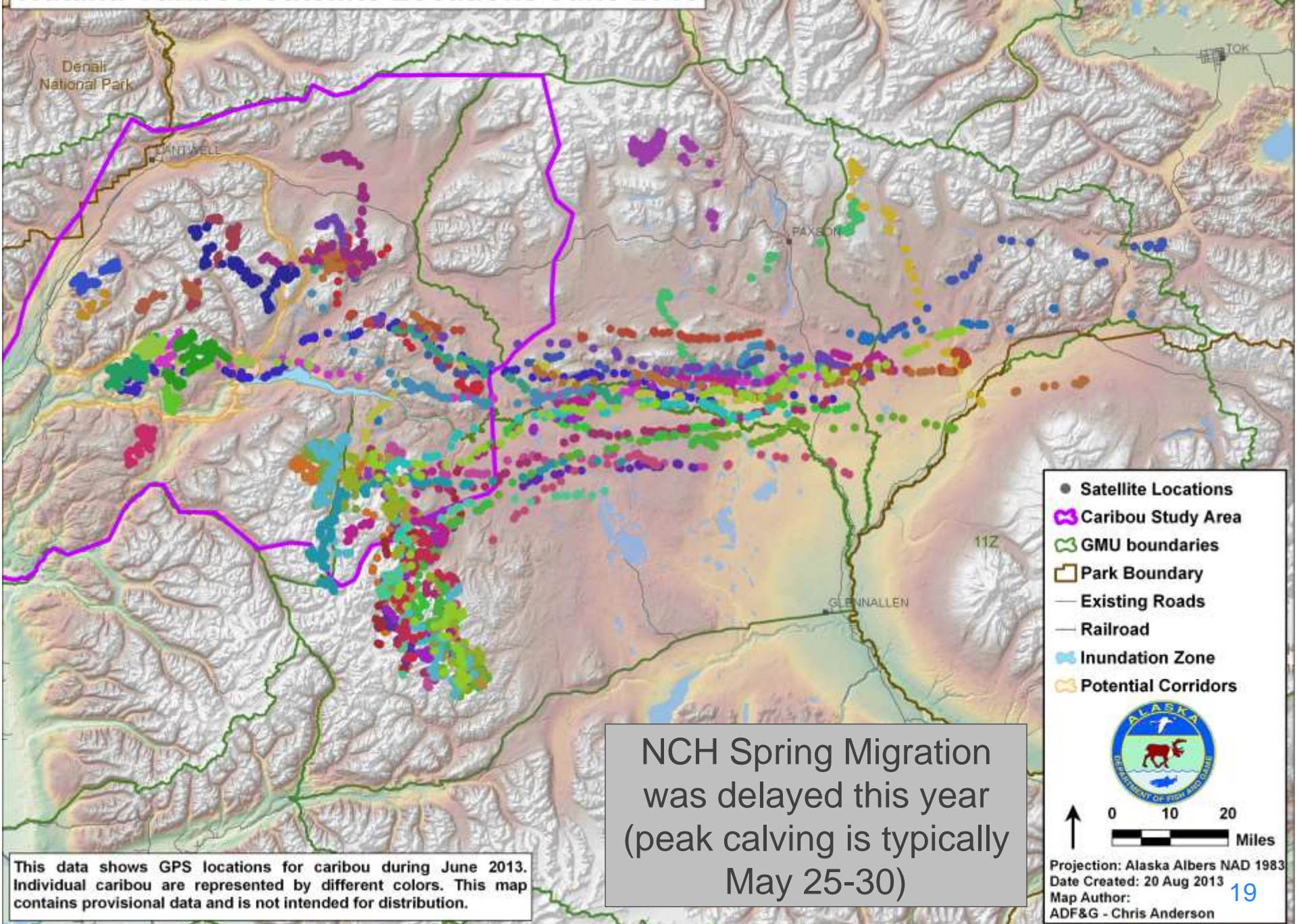
Photo by Kim Jones ADF&G



Photo by Kim Jones ADF&G

Photo by Kim Jones ADF&G

# Watana Caribou Satellite Locations June 2013



This data shows GPS locations for caribou during June 2013. Individual caribou are represented by different colors. This map contains provisional data and is not intended for distribution.

NCH Spring Migration was delayed this year (peak calving is typically May 25-30)

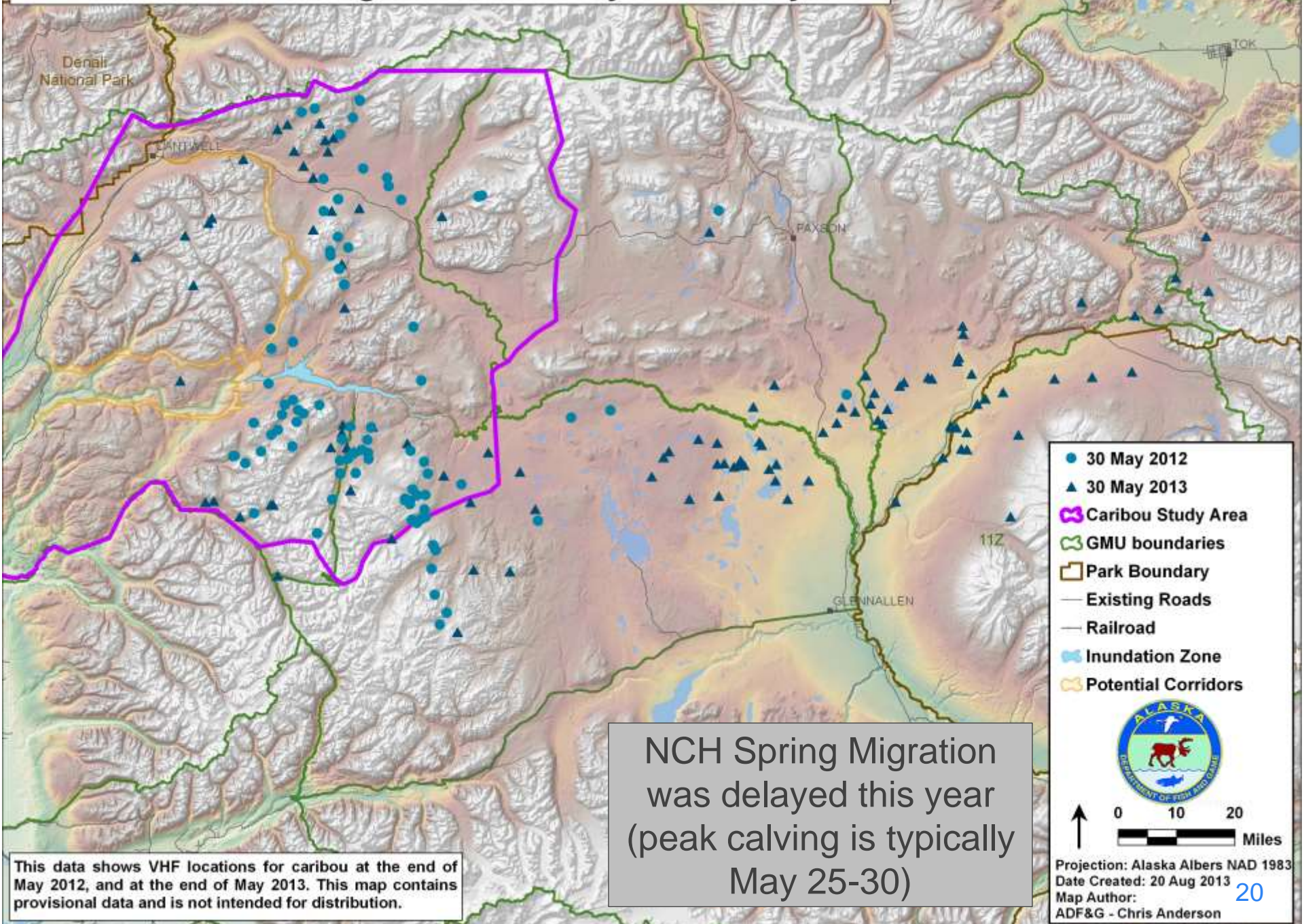
- Satellite Locations
- 🟪 Caribou Study Area
- 🟩 GMU boundaries
- 🟫 Park Boundary
- Existing Roads
- Railroad
- 🟦 Inundation Zone
- 🟨 Potential Corridors



0 10 20 Miles

Projection: Alaska Albers NAD 1983  
Date Created: 20 Aug 2013  
Map Author: ADF&G - Chris Anderson

# Watana Caribou Calving Locations - May 2012 & May 2013



This data shows VHF locations for caribou at the end of May 2012, and at the end of May 2013. This map contains provisional data and is not intended for distribution.

NCH Spring Migration was delayed this year (peak calving is typically May 25-30)

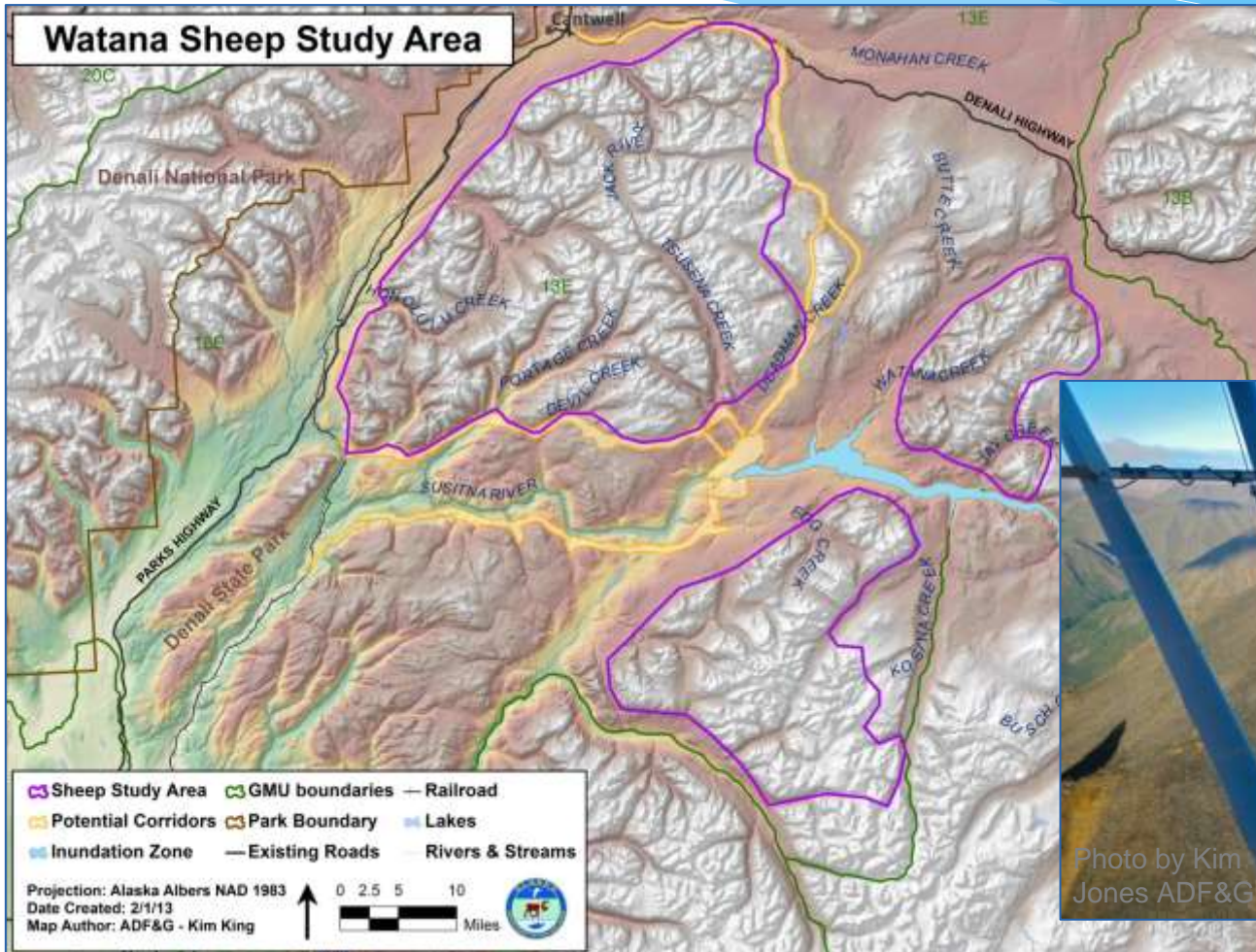
- 30 May 2012
- ▲ 30 May 2013
- 🟪 Caribou Study Area
- 🟩 GMU boundaries
- 🟨 Park Boundary
- Existing Roads
- Railroad
- 🟦 Inundation Zone
- 🟨 Potential Corridors



0 10 20 Miles

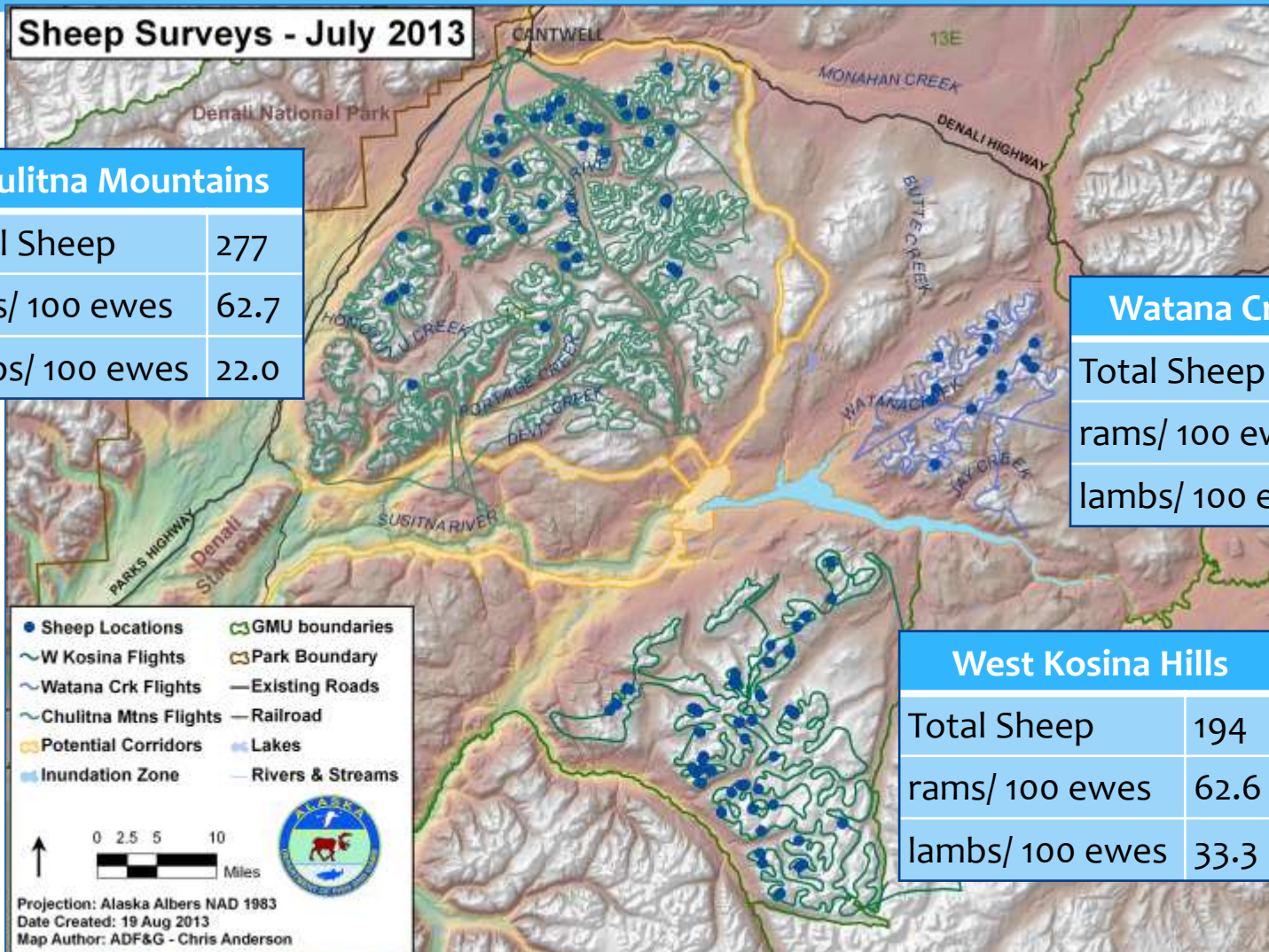
Projection: Alaska Albers NAD 1983  
Date Created: 20 Aug 2013  
Map Author: ADF&G - Chris Anderson

ADF&G flew a survey of all suitable **Dall's Sheep** habitat in the Project vicinity this summer.



# ADF&G flew a survey of all suitable Dall's Sheep habitat in the Project vicinity this summer.

## Sheep Surveys - July 2013



Chulitna Mountains	
Total Sheep	277
rams/ 100 ewes	62.7
lambs/ 100 ewes	22.0

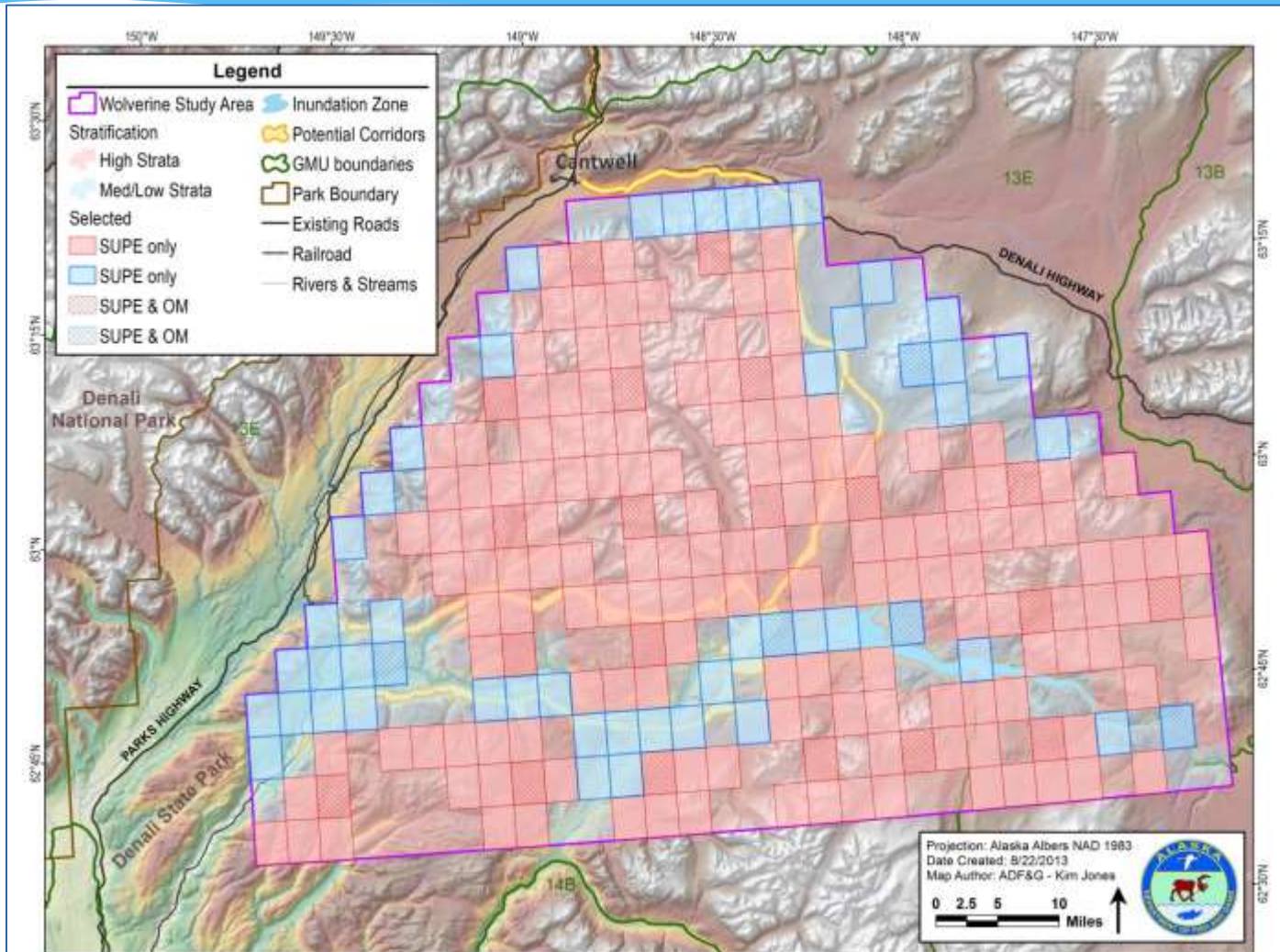
Watana Creek Hills	
Total Sheep	41
rams/ 100 ewes	63.6
lambs/ 100 ewes	22.7

West Kosina Hills	
Total Sheep	194
rams/ 100 ewes	62.6
lambs/ 100 ewes	33.3

● Sheep Locations     ⬭ GMU boundaries  
~ W Kosina Flights     ⬭ Park Boundary  
~ Watana Crk Flights     — Existing Roads  
~ Chulitna Mtns Flights     — Railroad  
⬭ Potential Corridors     ⬭ Lakes  
⬭ Inundation Zone     — Rivers & Streams

0 2.5 5 10 Miles  
 Projection: Alaska Albers NAD 1983  
 Date Created: 19 Aug 2013  
 Map Author: ADF&G - Chris Anderson

# ADF&G conducted Occupancy Modeling (OM) on **wolverines** in 2013. We expect to do both Sample Unit Probability Estimator (SUPE) and OM in 2014



# Initial Draft Results of Wolverine Occupancy Modeling (OM).

- Survey Dates: April 11 & 15 2013
- Tracks in 23/25 Sample Units  
(23/25 high, 5/5 Low)
- Uncorrected Occupancy .92
- Density estimate 5.5 wolverines/1000km<sup>2</sup>  
(CI = 4.5-7.6)

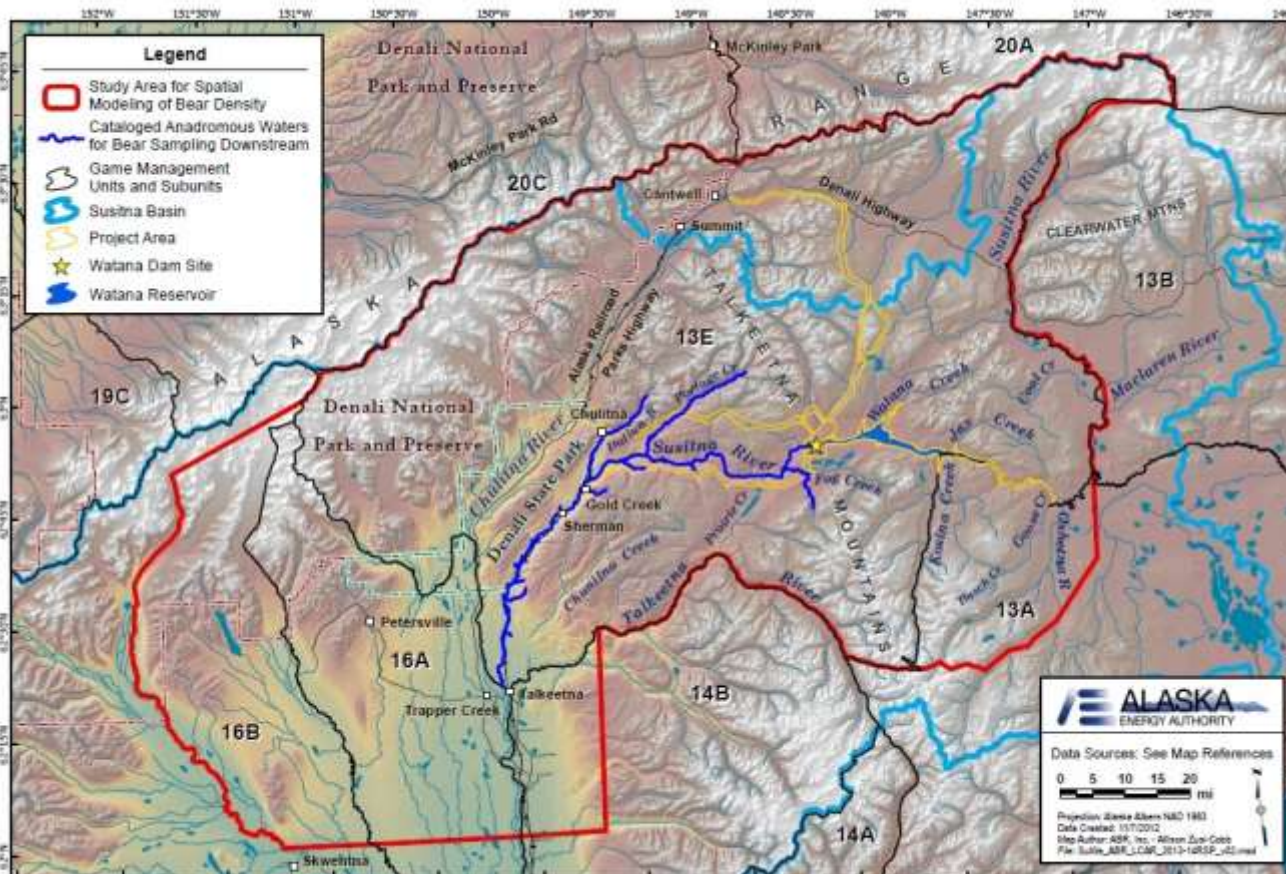
Optimal conditions like this developed late in 2013.



Photo by Becky Schwanke ADF&G

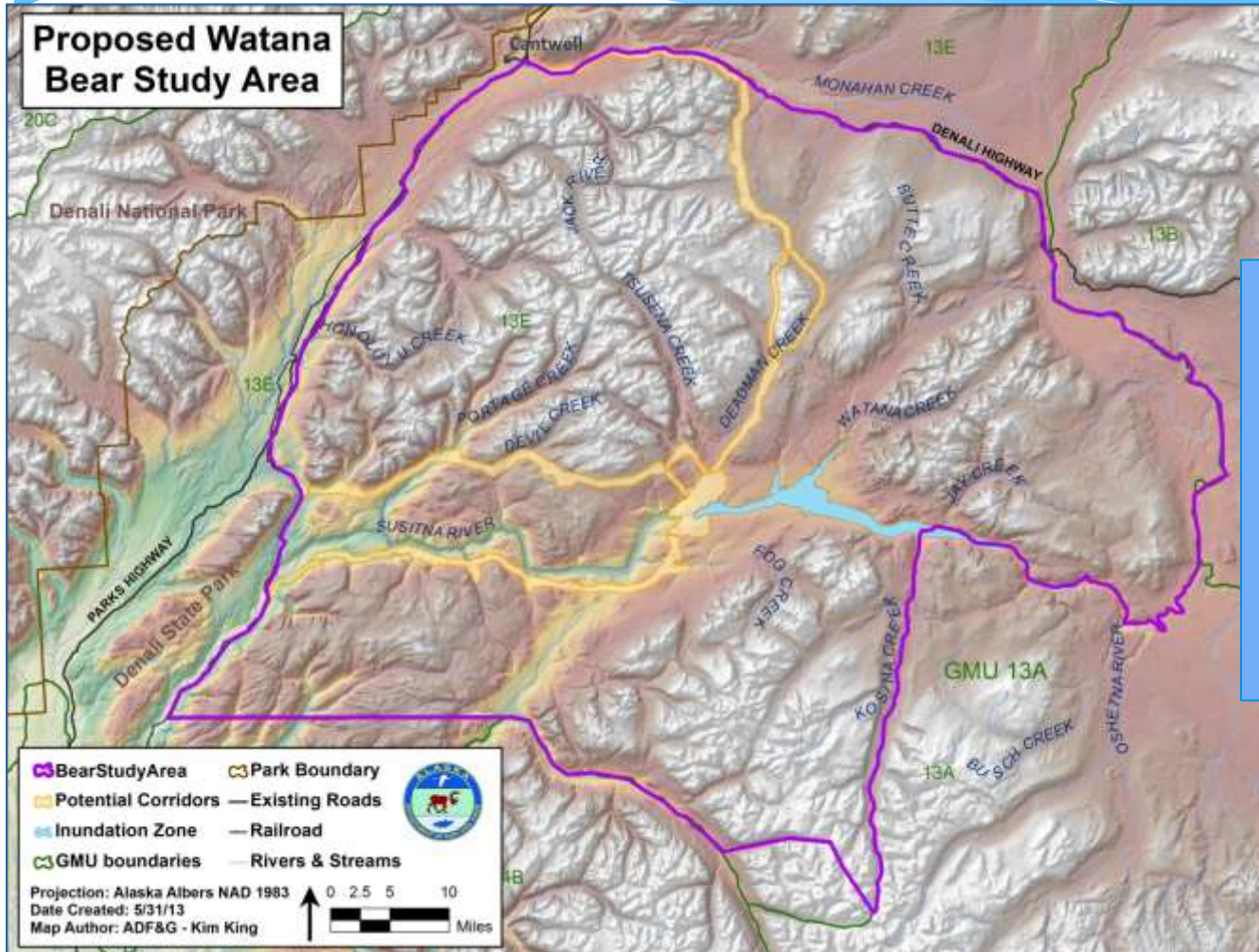


ADFG has **black and brown bear** distance sampling data available for GMU 16, and parts of GMU 13 from ADF&G 2000-2004 data.



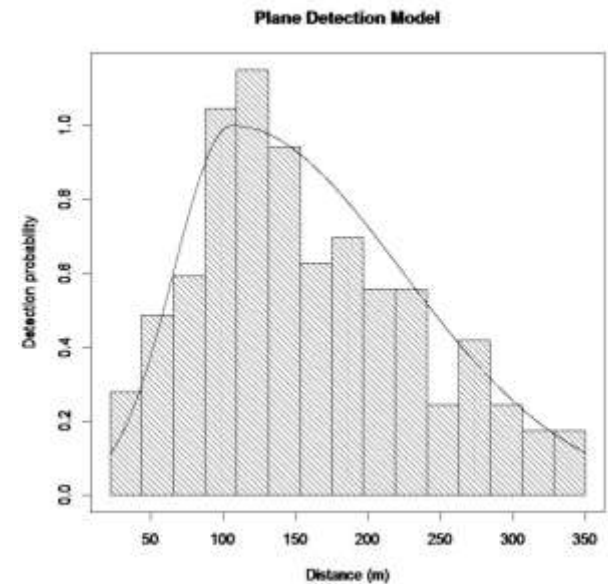
ADFG

# ADF&G is preparing transect segmented database for spatial modeling of bear populations.



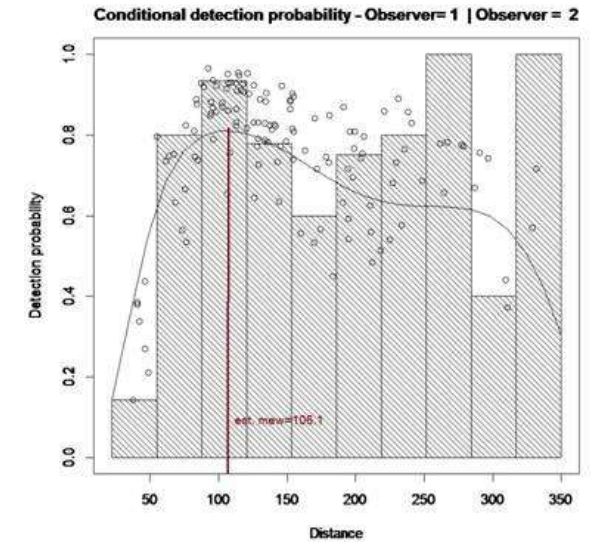
GIS data preparation for spatial modeling is taking more time than anticipated.

Have fit two-piece normal distance model to the black bear data set.



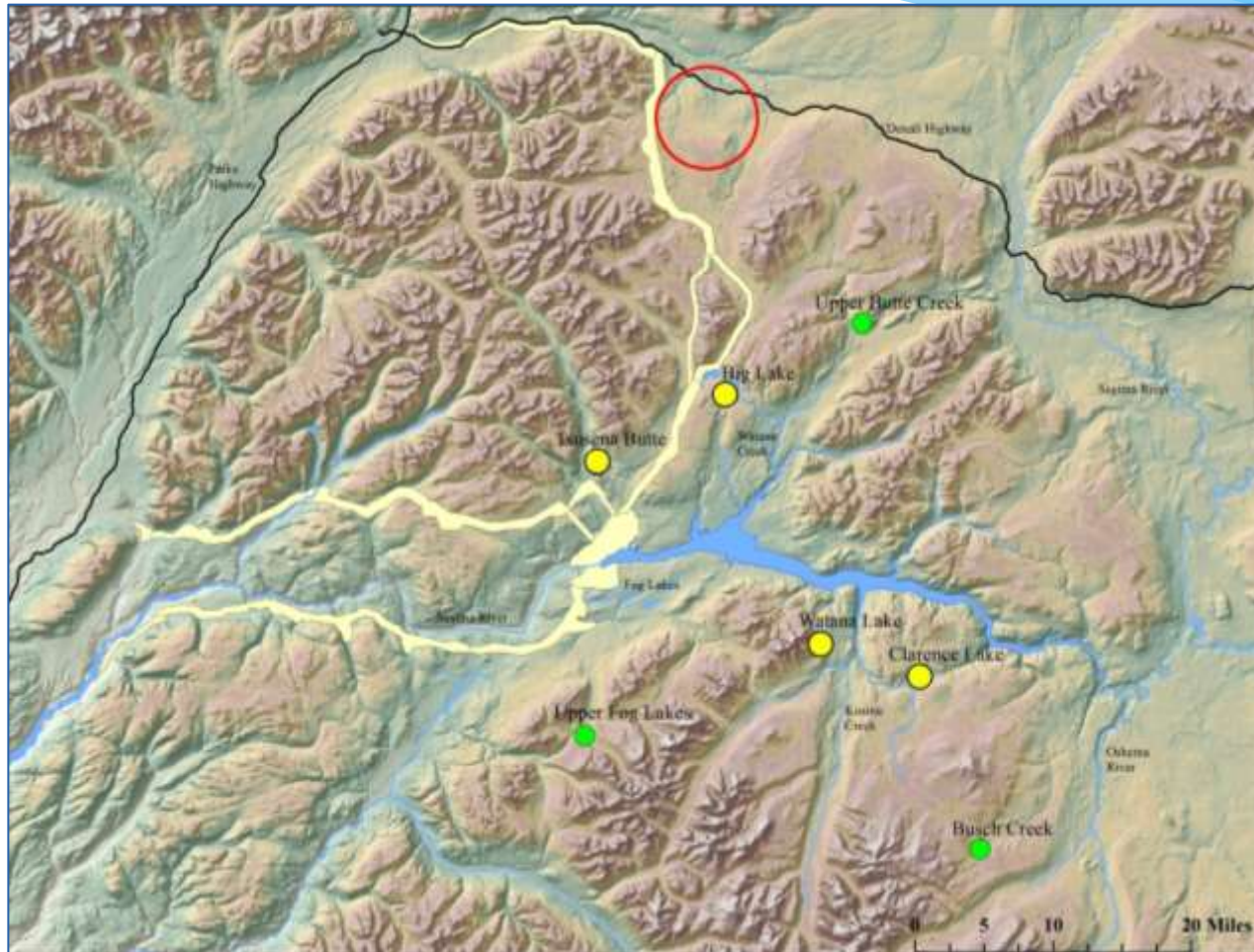
Example only: 16B data

# Logistic model corrects for imperfect detection at peak detection.

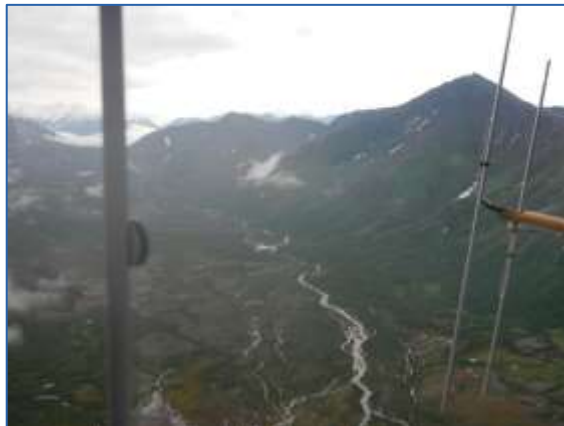


Example only: 16B data

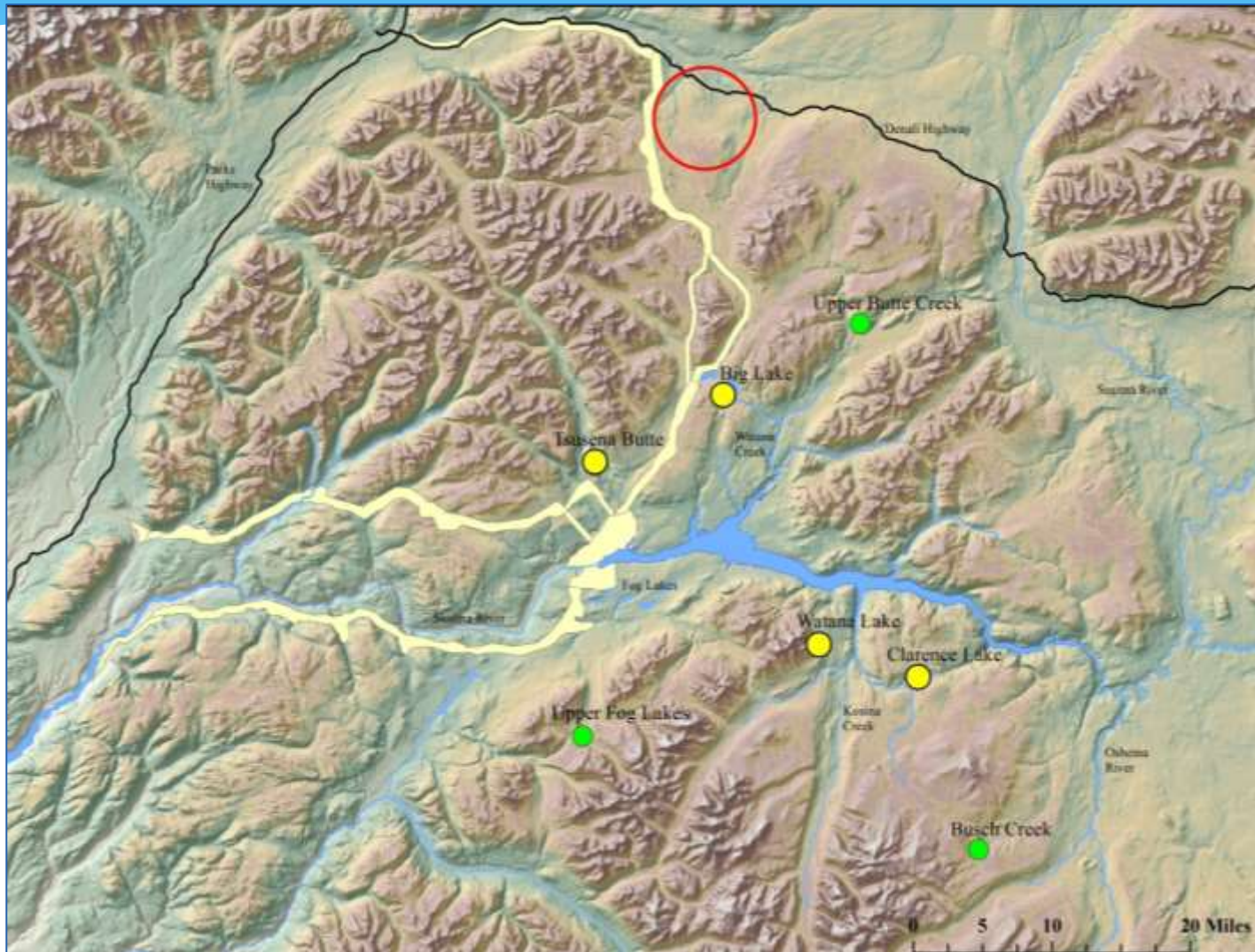
31 Adult Ptarmigan have been captured in the study area to date.



Relocation telemetry flights took place in June and July 2013 and are planned to occur monthly.

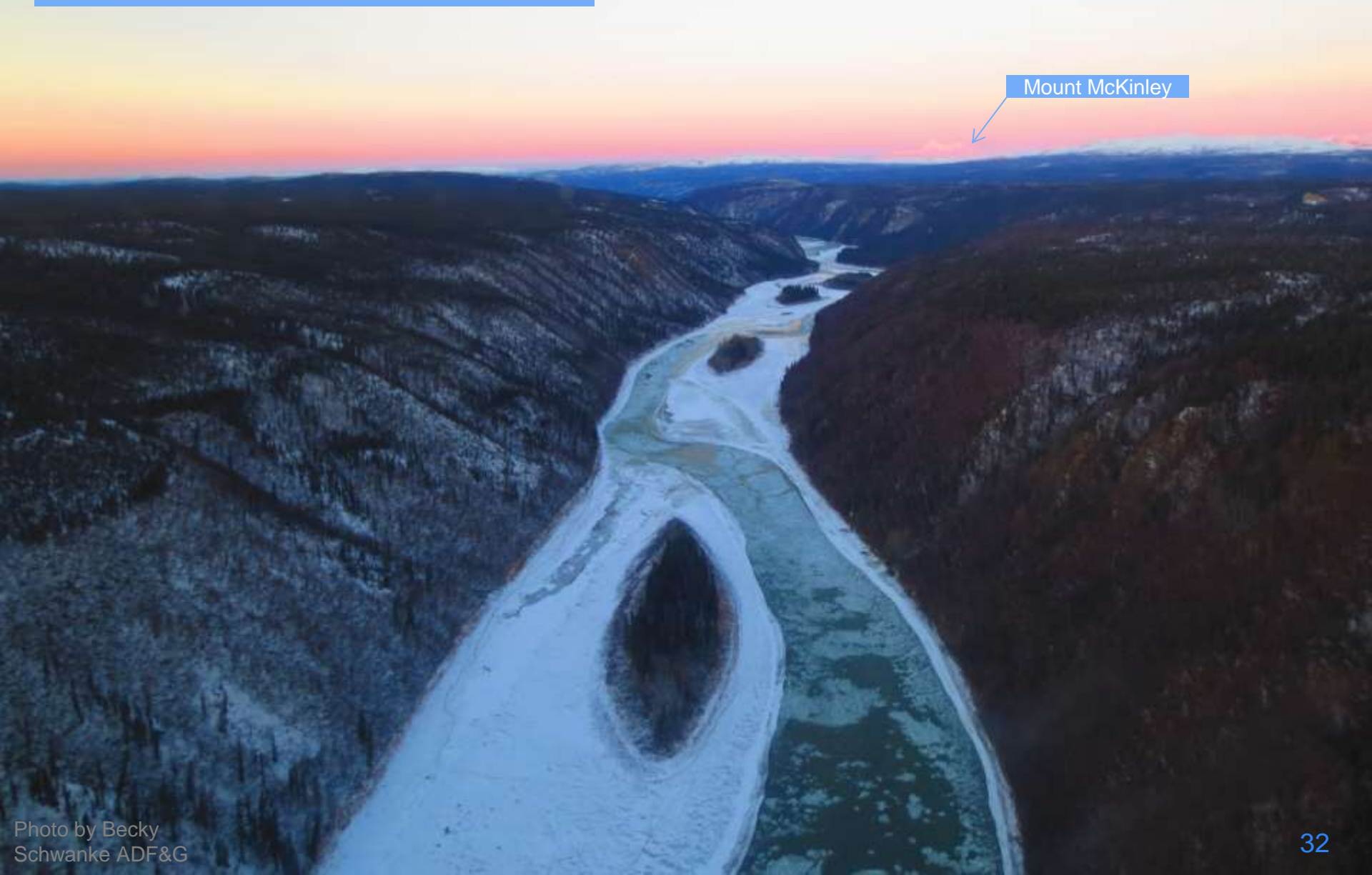


# Planning a capture effort in early August at Upper Fog and Watana Lakes.



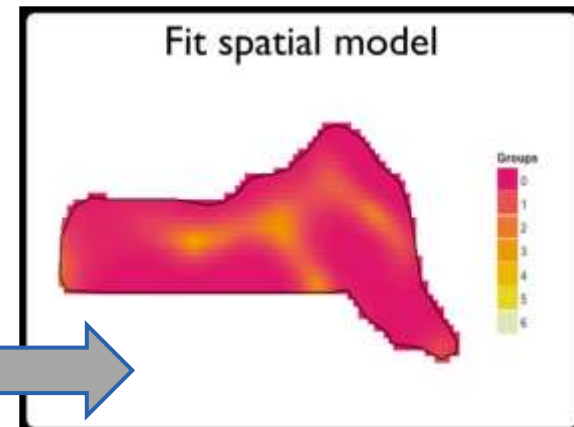
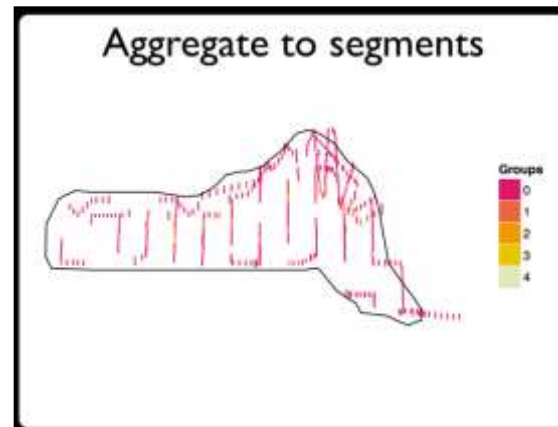
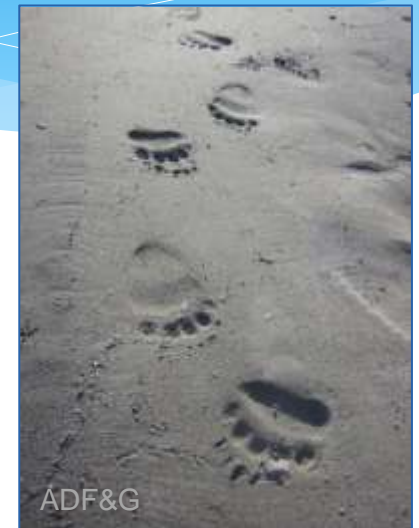
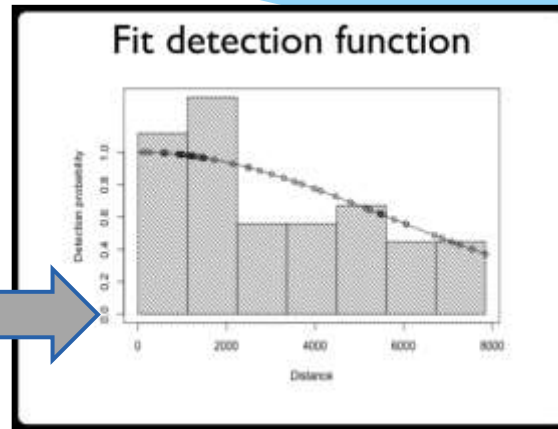
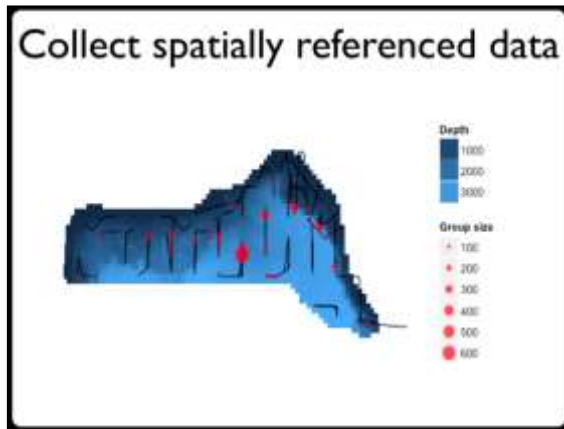
# Looking downstream from the proposed dam site

Mount McKinley





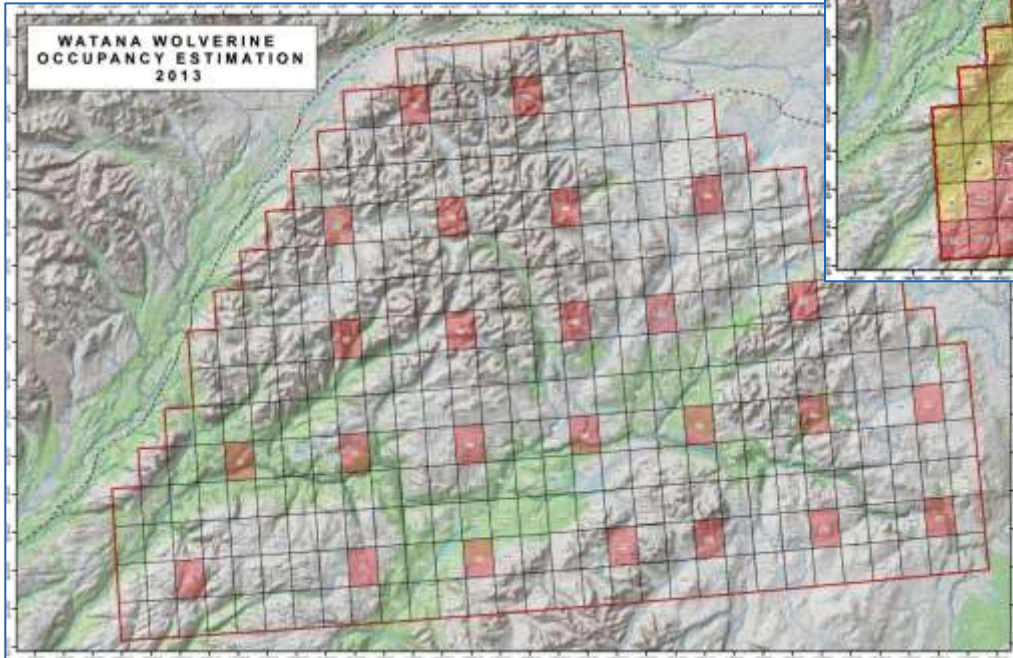
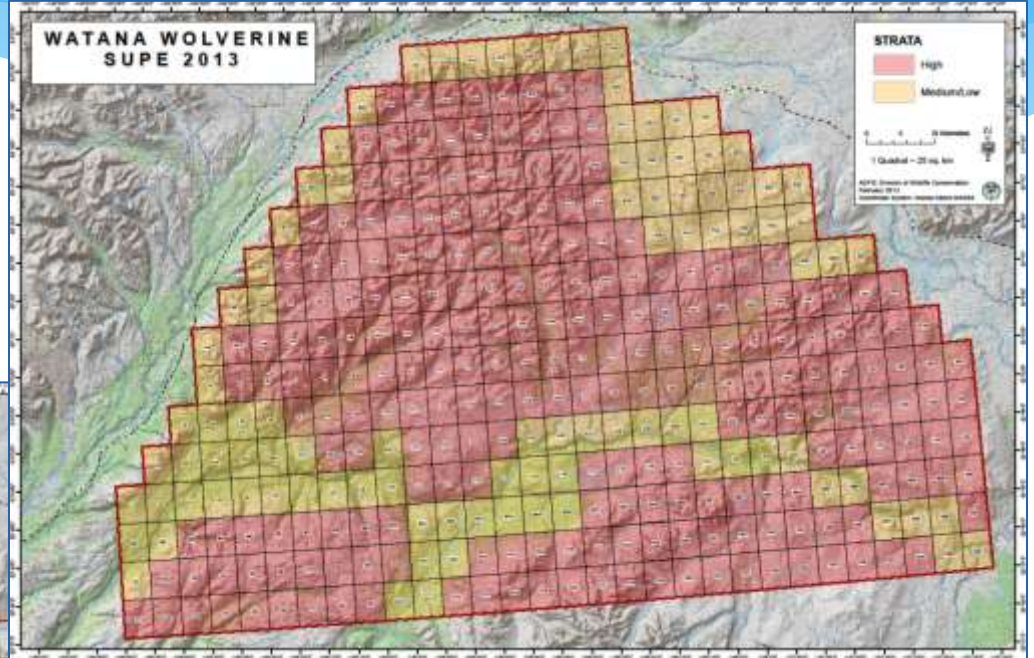
# Spatial-line transect modeling will be used to estimate bear populations in the Project vicinity from ADF&G 2000-2004 data.



Spatial density surface estimation from distance sampling surveys  
David L. Miller, Len Thomas, Laura Marshall

ADF&G conducted Occupancy Modeling (OM) on **wolverines** in 2013. We expect to do both Sample Unit Probability Estimator (SUPE) and OM in 2014

SUPE Grid →



← OM Grid