

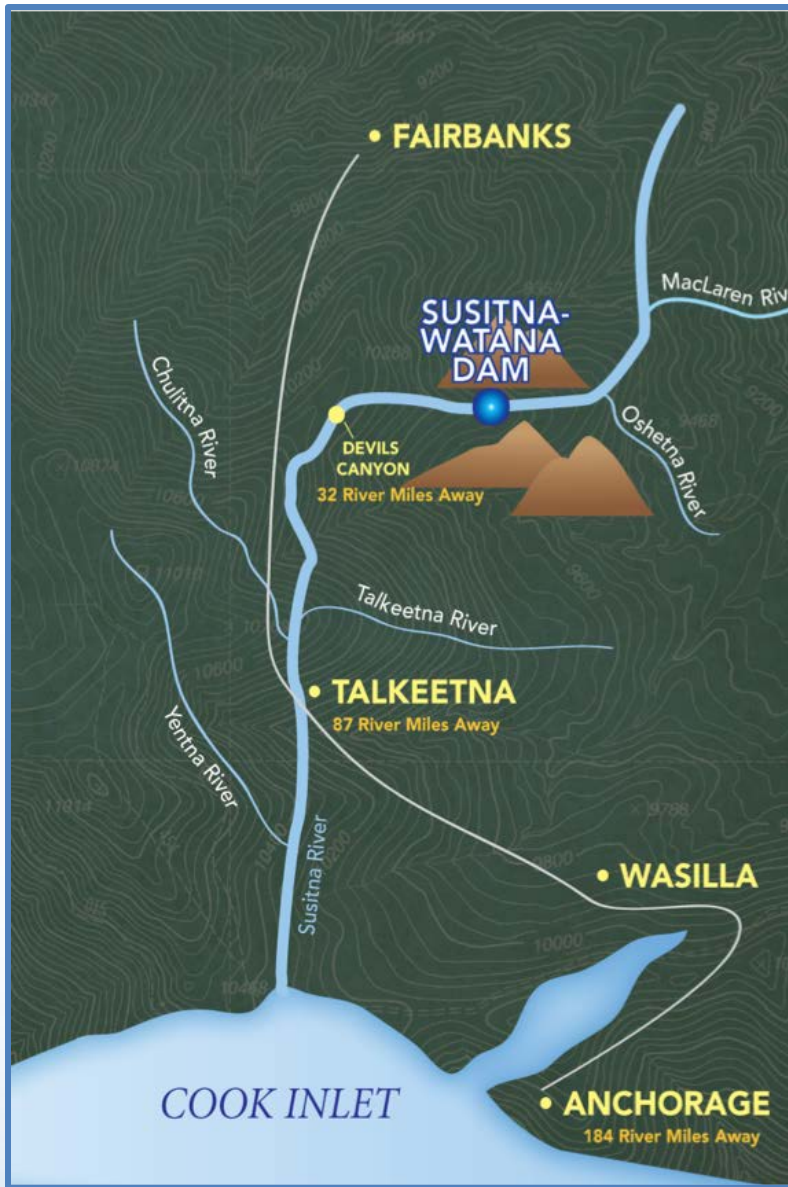
Technical WorkGroup Meeting

Q3 2013 TWG

Subsistence Resources Study

September, 11 2013

Prepared by HDR Alaska, Inc.
and Division of Subsistence,
Alaska Department of Fish
and Game



14.5 Subsistence Resources Study– 2

Presentation Overview

- *Existing Data Compilation*
- *Traditional and Local Knowledge Workshops*
- *10-Year Mapping Interviews*
- *Household Harvest Surveys*

Existing Data Compilation– Q3 2013

Update and Variances

3

- *Reviewed existing subsistence data for all 37 study communities*
- *On schedule for reporting in ISR*
- *Unable to access to ADFG Harvest Ticket Database in time for ISR, will include analysis in 2014 Reporting*



Existing Data Compilation– Next Steps⁴

- Complete reporting of existing data compilation in ISR



Traditional and Local Knowledge Workshops– Q3 2013 Update

5

Workshops Completed:

Eklutna

3 Workshops

12 Participants

Gulkana

3 Workshops

16 Participants

Gakona

3 Workshops

17 Participants

Copper Center

*5 Workshops (3 with Kluti-
Kaah; 2 with CRNA)*

64 Participants

Chitina

1 Workshop

3 Participants

Cantwell

3 Workshops

9 Participants



Traditional and Local Knowledge Workshops– Q3 2013 Update

Workshops Planned:

- *Tyonek
5 workshops completed, additional workshop
planned Sept 5-6, 2013*
- *Knik- Planning in progress, expected Fall 2013*
- *Chickaloon- Planning in progress, expected Fall 2013*



Traditional and Local Knowledge Workshops– Variances

7

Schedule Variances

- *TLK Interviews in Knik and Chickaloon will be conducted in Fall/Winter, 2013 and may not be included in ISR*
- *TLK Interviews in Tyonek nearly complete, will be finished in September, 2013 and will be included in ISR*



Traditional and Local Knowledge Workshops– Next Steps

- Reporting of results for completed TLK workshops in ISR
- Completion of Tyonek, Knik and Chickaloon Workshops
- Conduct Community Reviews

10-Year Mapping Interviews– Q3 2013 9

Update, Variances and Next Steps

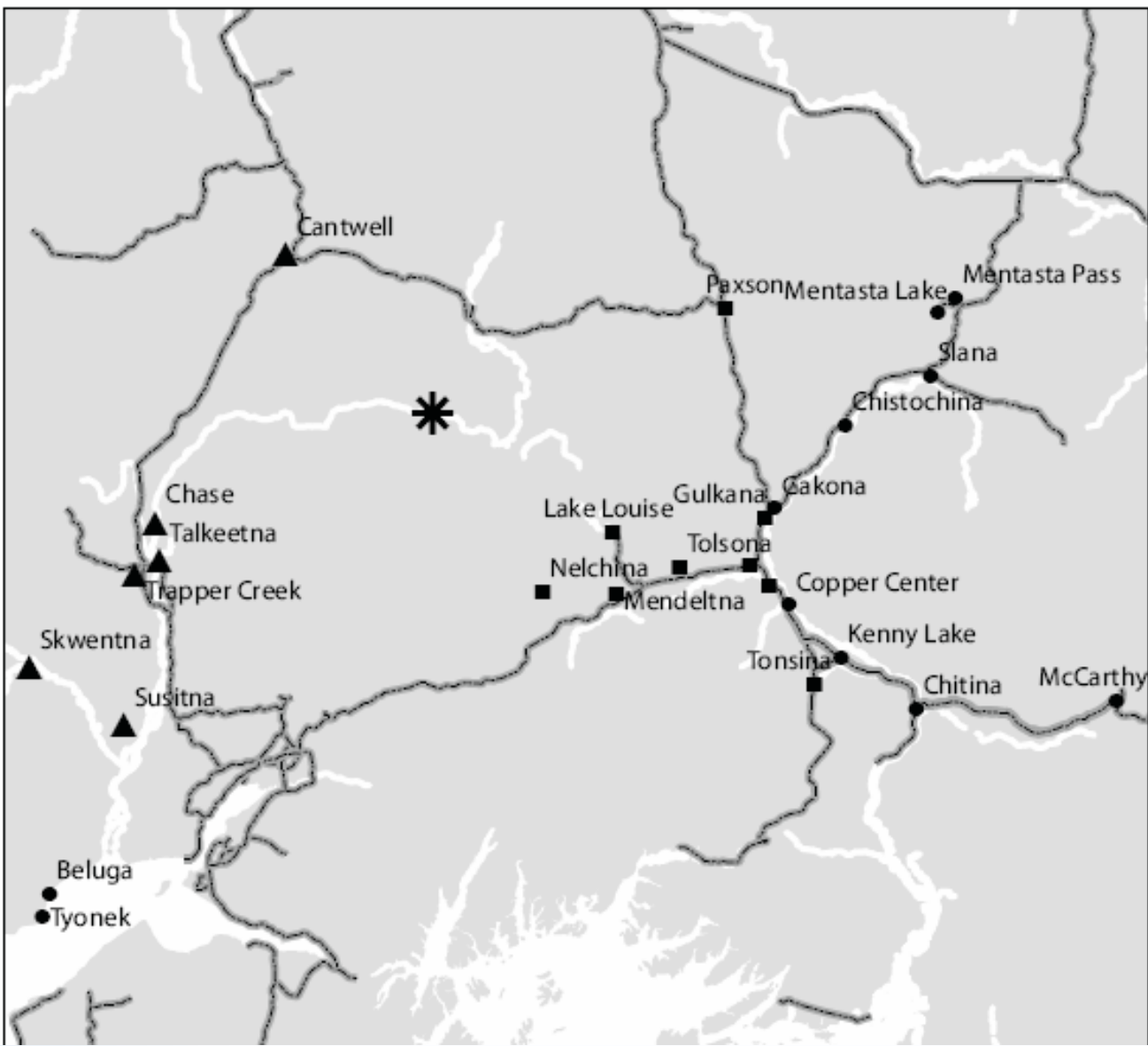
- *Task scheduled for 2014*

Household Harvest Surveys– Q3 2013 Update

10

Prepared by Division of Subsistence
Alaska Department of Fish and Game





Study Communities

- ▲ Year 1 Communities
- Year 2 Communities
- Surveyed or In Progress
- ★ Susitna-Watana Project

Major Roads

0 25 50
Miles

Household Harvest Surveys– 2013 Task Overview

July-September 2012

October-November 2012

December 2012

January-March 2013

January-March 2013

February-July 2013

July 18-19, 2013

July-September 2013

September-October 2013

November- December 2013

February 3, 2014

Project planning meetings

Community scoping meetings

Finalize survey instrument

Household surveys

Key respondent interviews

Data entry and review; production of maps

Data review workshop

Prepare draft study findings report

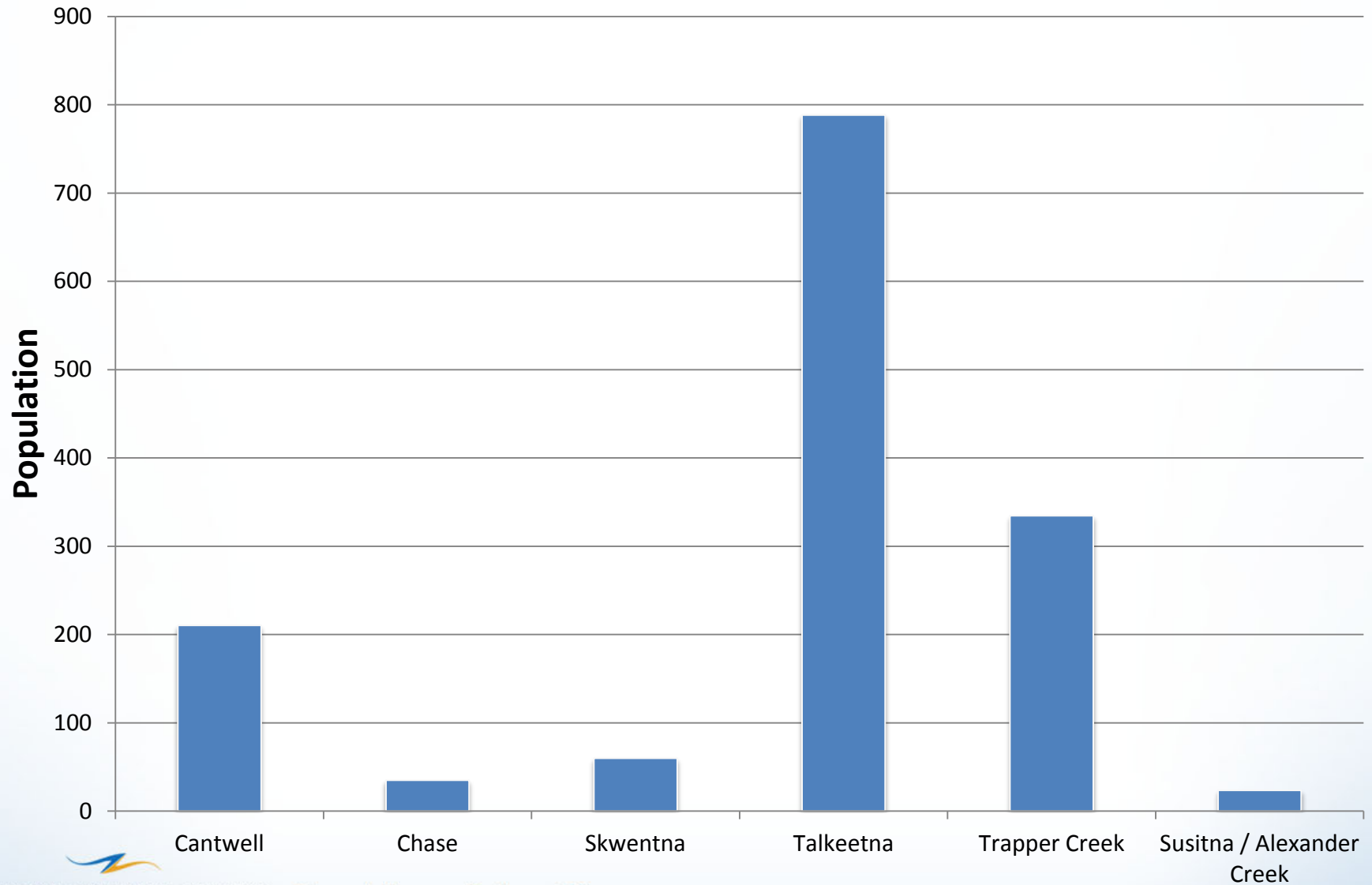
Community findings review meetings

Reports prepared

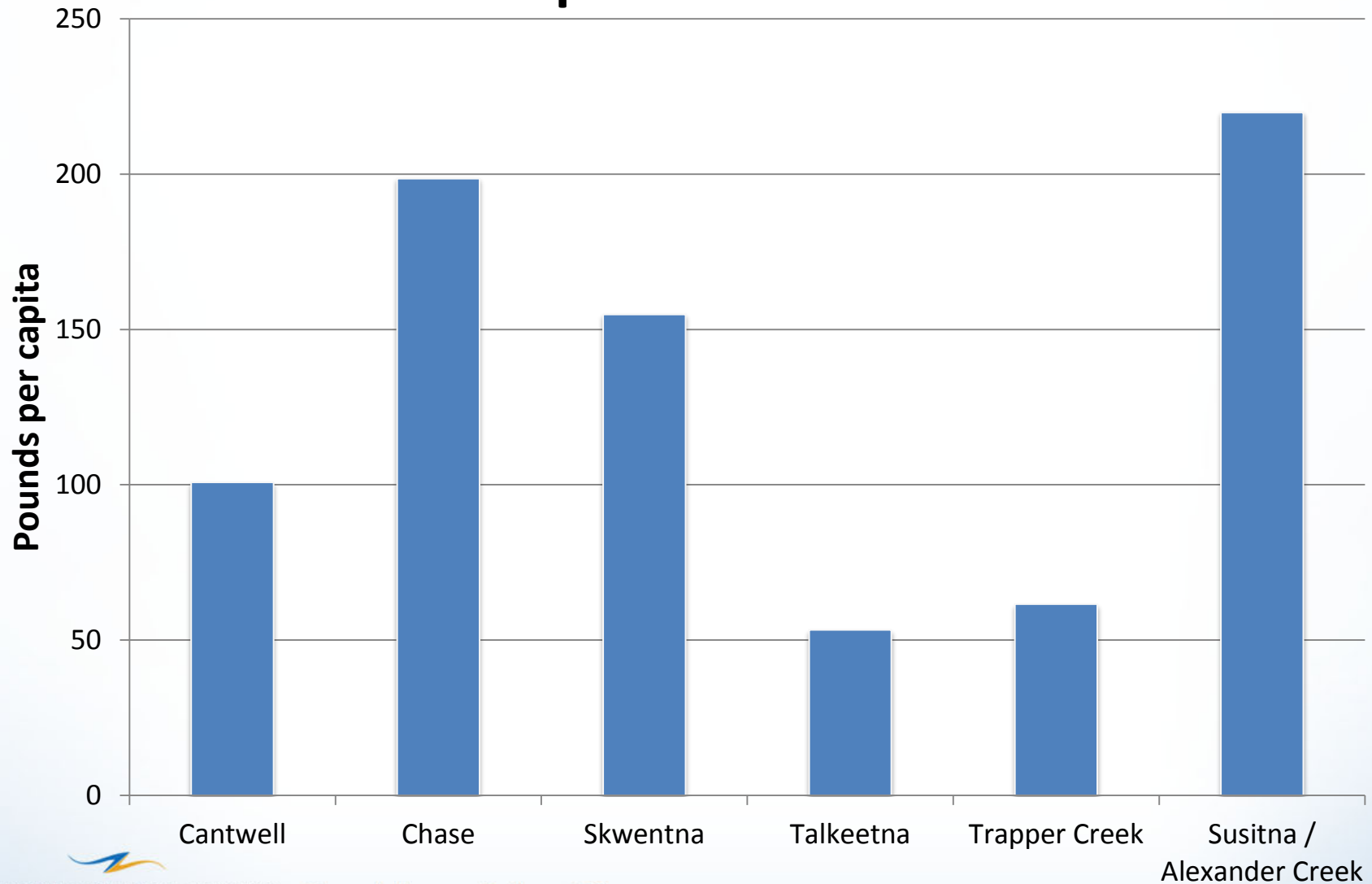
Initial Study Report complete



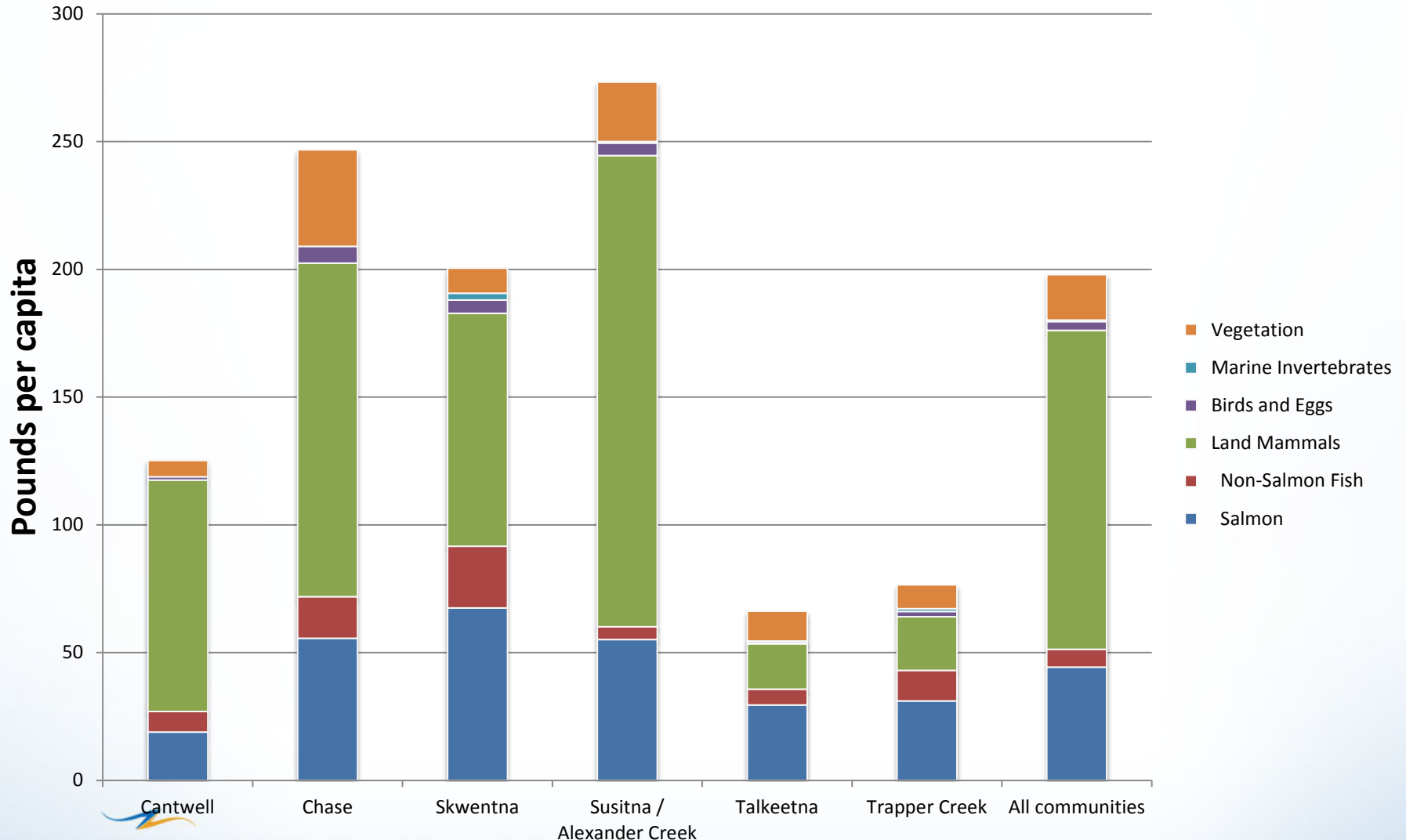
Household Harvest Surveys– Q3 2013 Update



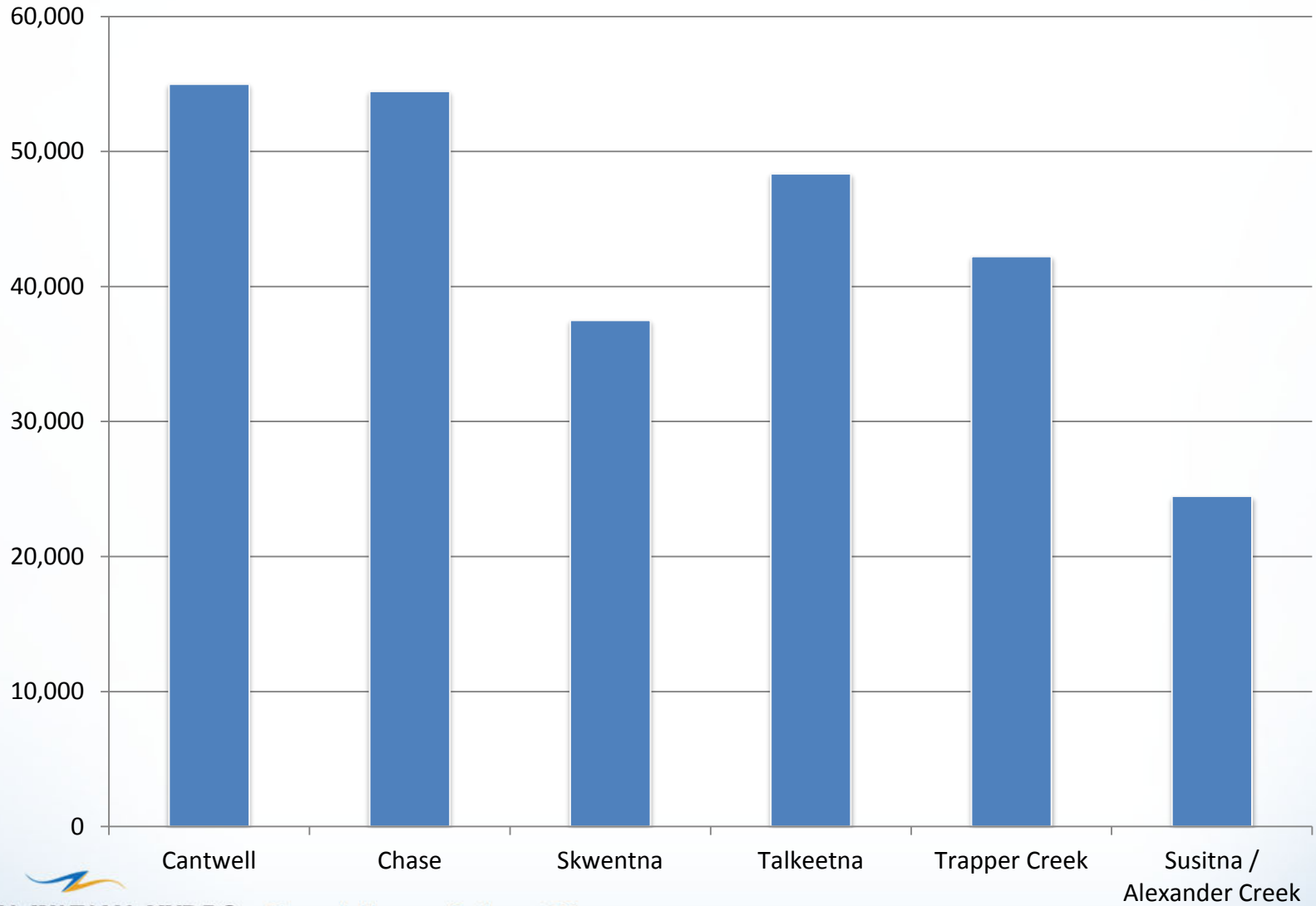
Per capita harvest



Composition of harvest



Household income



Jobs in community

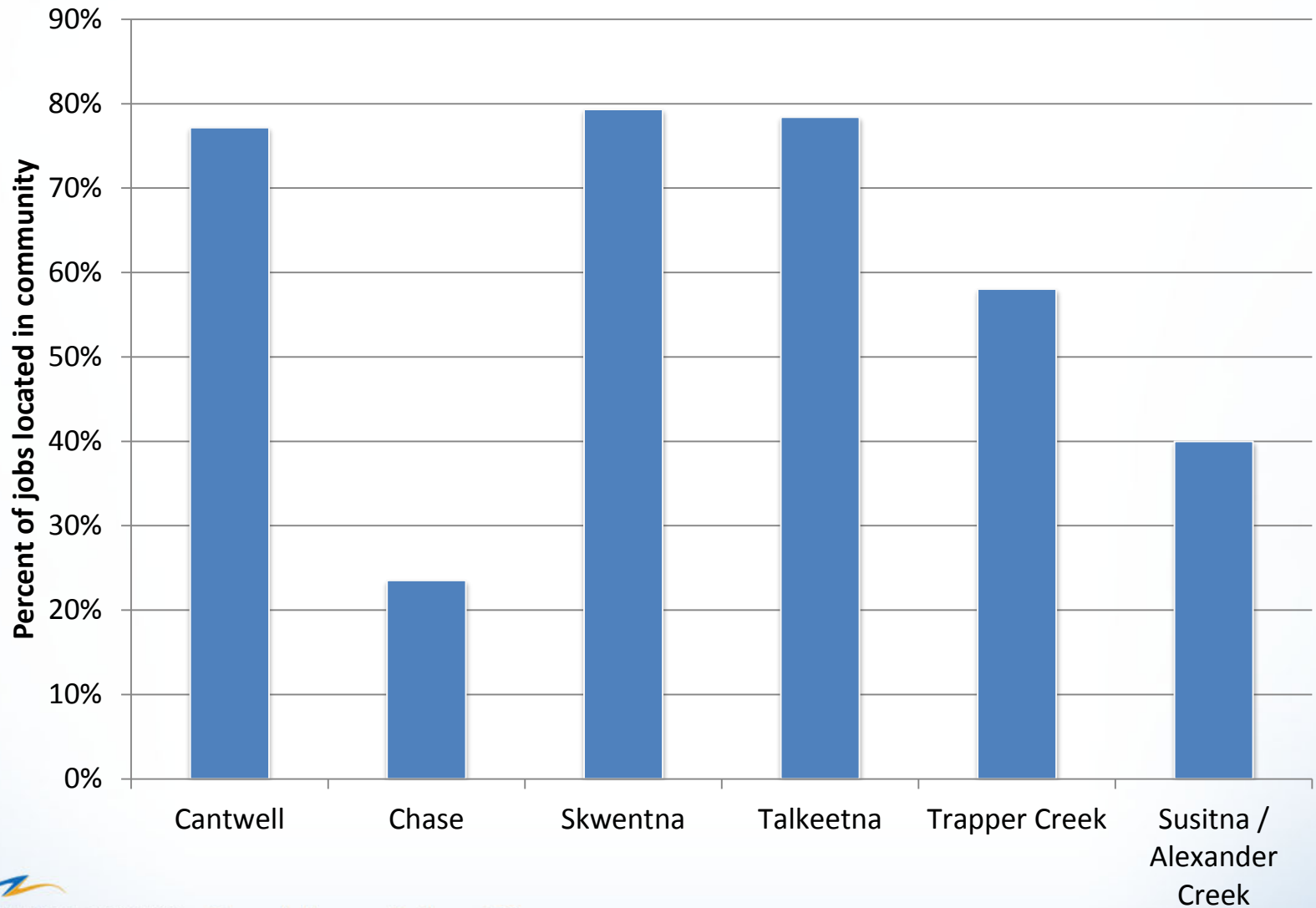


Table n-m.—Comparison of selected findings for selected Susitna basin area communities, Alaska, 2012.

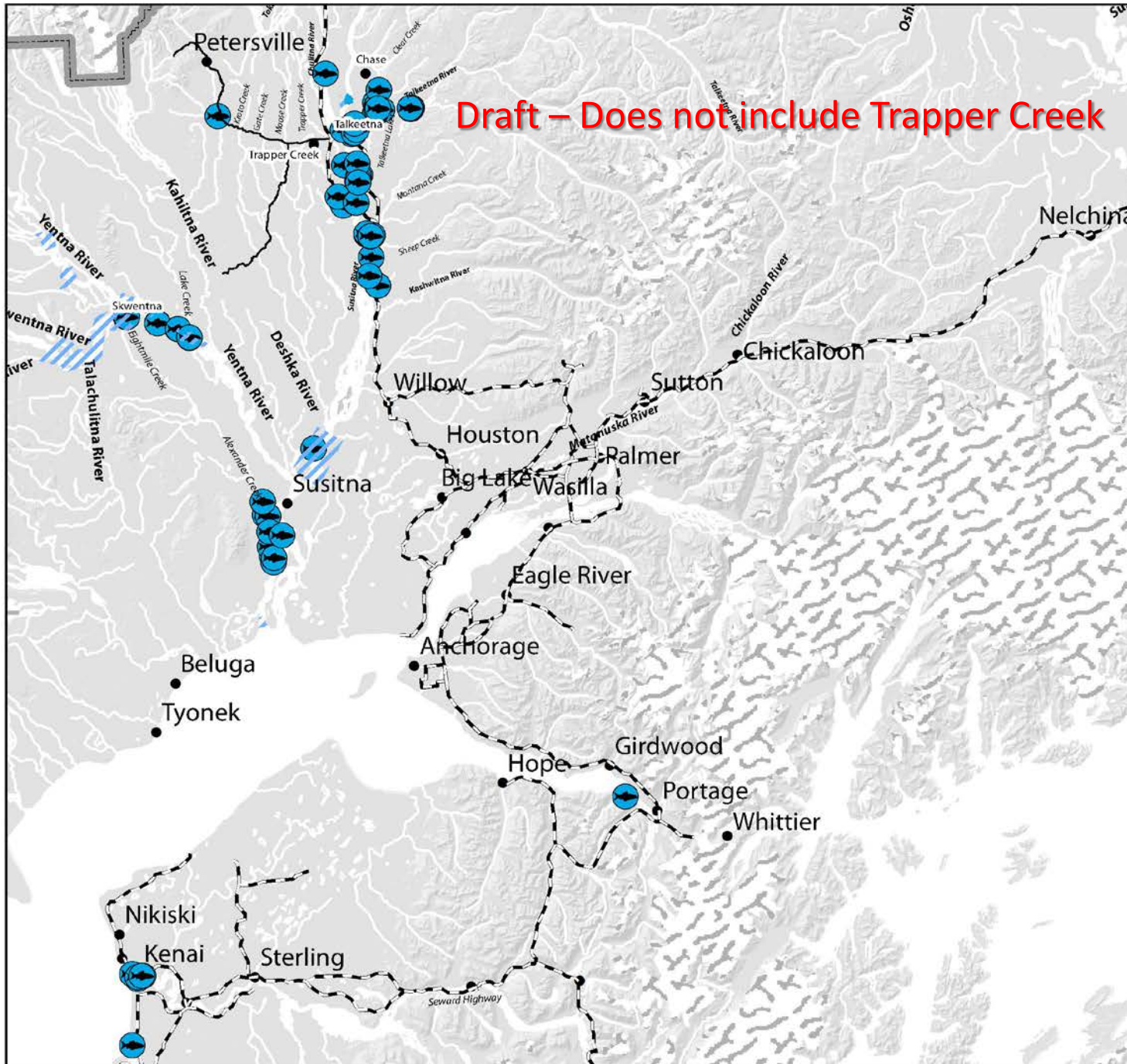
Category	Cantwell	Chase	Skwentna	Talkeetna	Trapper Creek	Susitna / Alexander Creek
Demography						
Population	210.4	34.9	59.8	788.3	334.6	23.6
Percentage of population that is Alaska Native	17.7%	0.0%	3.9%	3.7%	5.8%	10.0%
Percentage of household heads born in Alaska	25.3%	0.0%	12.8%	12.0%	14.7%	25.0%
Average length of residency of household heads (yr)	22.2	15.9	16.1	19.3	19.1	27.7
Cash Economy						
Percent of Jobs Located in community	77.2%	23.5%	79.3%	78.4%	58.0%	40.0%
Average number of months employed	8.2	6.0	5.5	8.3	6.5	2.9
Percentage of employed adults working year round	52.7%	34.0%	32.5%	53.2%	43.9%	14.0%
Percentage of income from sources other than employment	19.5%	15.5%	23.1%	25.1%	24.0%	72.7%
Average household income ^a	54,992.2	54,457.4	37,498.6	48,349.0	42,232.4	24,464.1
Per capita income ^a	23,265.9	28,107.0	21,322.8	22,937.7	18,679.7	13,455.3
Resource harvest and use						
Per capita harvest, lbs usable weight	100.8	198.6	154.8	53.3	61.6	219.9
Average HH harvest, lbs usable weight	238.3	384.7	272.3	112.3	139.3	399.7
Number of resources used by 50% or more HHs	4.0	10.0	8.0	5.0	5.0	7.0
Average # of Resources Used per HH	6.9	12.9	11.0	8.5	9.0	11.3
Average # of Resources Attempted to Harvest per HH	5.7	12.3	9.7	6.2	7.2	8.6
Average # of Resources Harvested per HH	4.7	10.9	9.0	5.5	6.1	8.5
Average # of Resources Received per HH	2.5	3.2	2.9	3.8	3.2	3.6
Average # of Resources Given Away per HH	1.8	2.5	2.2	2.2	1.6	3.3
Percent of Total Harvest taken by Top 25%	74.7%	62.2%	57.9%	76.5%	78.4%	39.3%
Percent of HHs taking 70 percent of harvest	21.8%	31.3%	31.0%	20.6%	18.8%	36.4%
Per Capita Harvest of lowest 50 percent of HHs	2.2	27.0	23.1	1.9	2.7	41.6
Percent of Total Harvest taken by Lowest 50% of HHs	2.2%	13.6%	14.9%	3.5%	4.4%	18.9%
Average # of Resources Used by Lowest 50 % of HHs	4.1	9.9	8.7	5.7	5.7	10.7
Average # of Resources Used by Top 25% of HHs	10.8	19.5	17.7	13.7	13.4	13.0

Source ADF&G Division of Subsistence household surveys, 2013.

a. Includes income from sources other than employment.



Draft – Does not include Trapper Creek



ALL COMMUNITIES HARVEST OF WILD RESOURCES, 2012



Salmon Harvest Locations

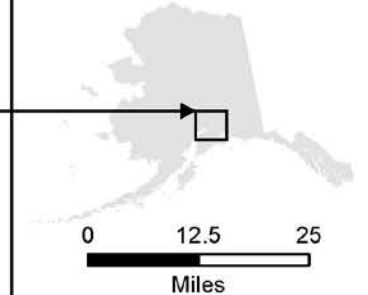


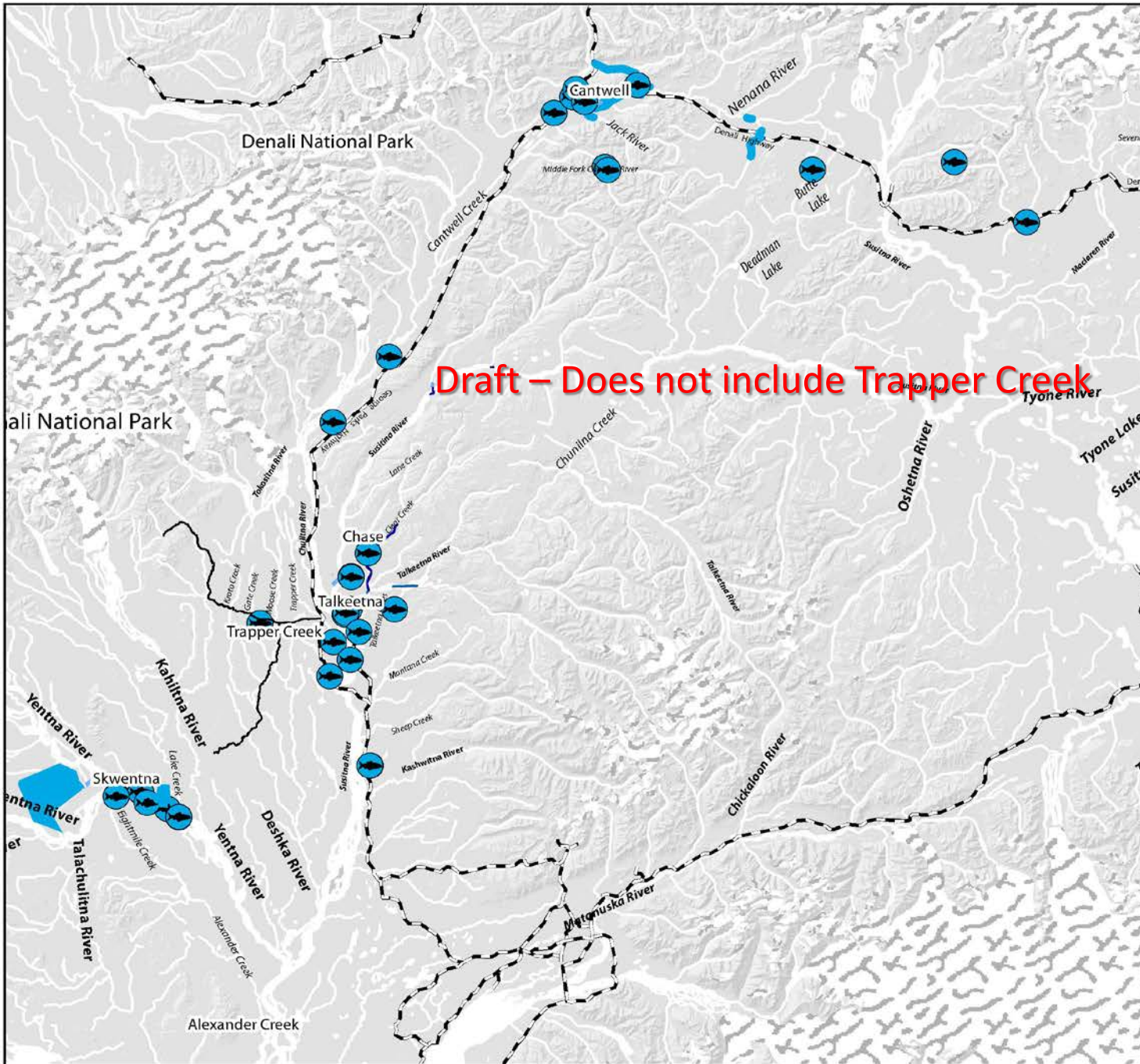
Highway



Park and Preserve Boundary

Source: Alaska Department of Fish and Game, Division of Subsistence household surveys, 2013. Technical Paper Number 385, The harvest and use of wild resources in Cantwell, Chase, Talkeetna, Trapper Creek, Susitna Station/ Alexander Creek, and Skwentna Alaska, 2012.



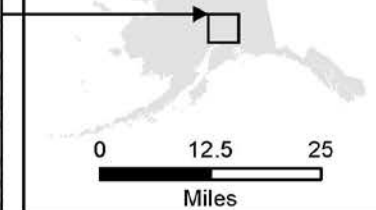
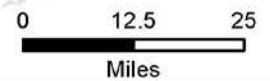


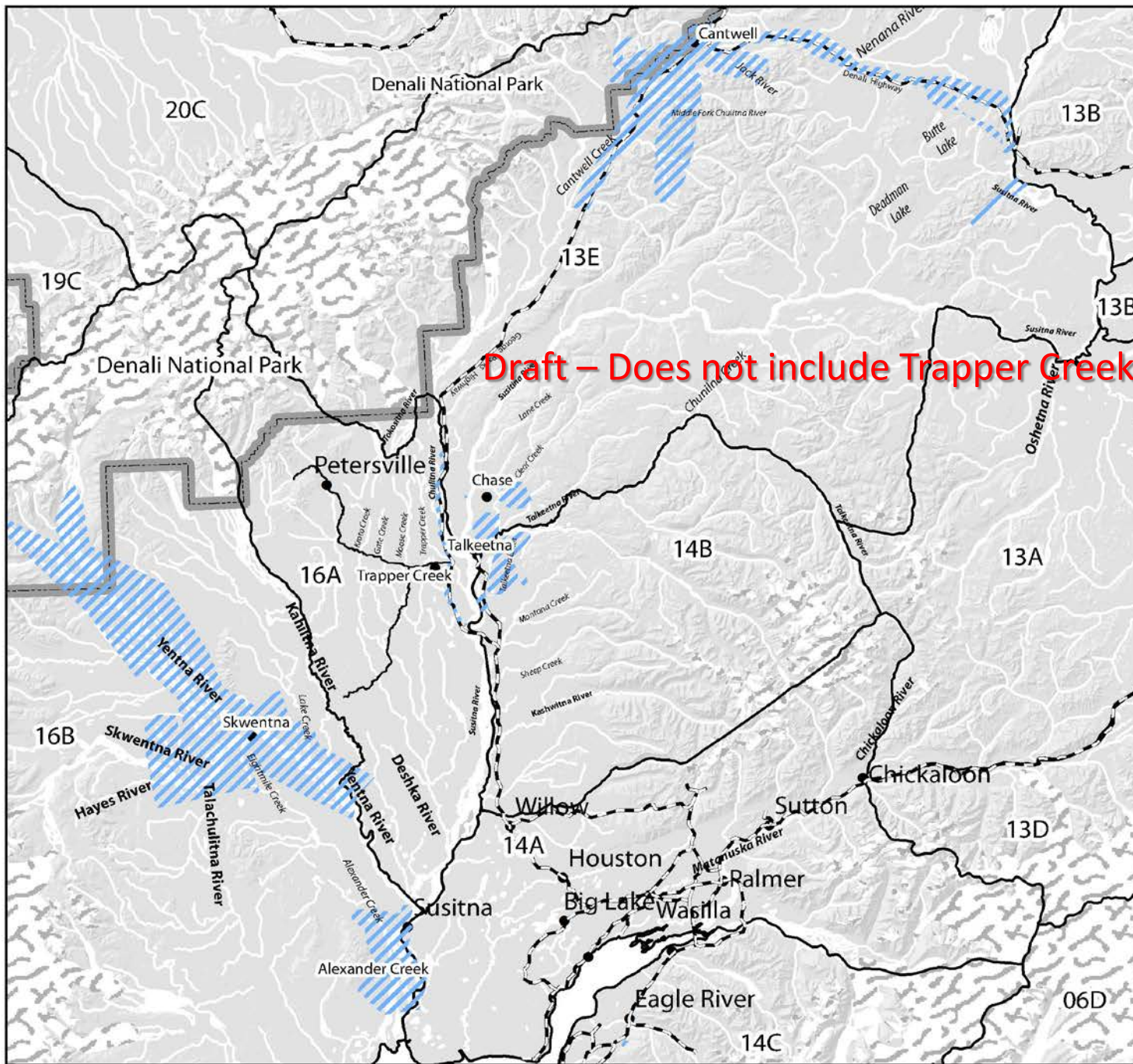
Draft - Does not include Trapper Creek

ALL COMMUNITIES HARVEST OF WILD RESOURCES, 2012

-  Nonsalmon Fish Harvest Locations
-  Highway
-  Park and Preserve Boundary

Source: Alaska Department of Fish and Game, Division of Subsistence household surveys, 2013. Technical Paper Number 385, The harvest and use of wild resources in Cantwell, Chase, Talkeetna, Trapper Creek, Susitna Station/ Alexander Creek, and Skwentna Alaska, 2012.





ALL COMMUNITIES HARVEST OF WILD RESOURCES, 2012

Moose Search Area

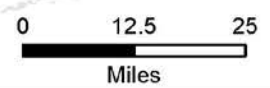
Highway

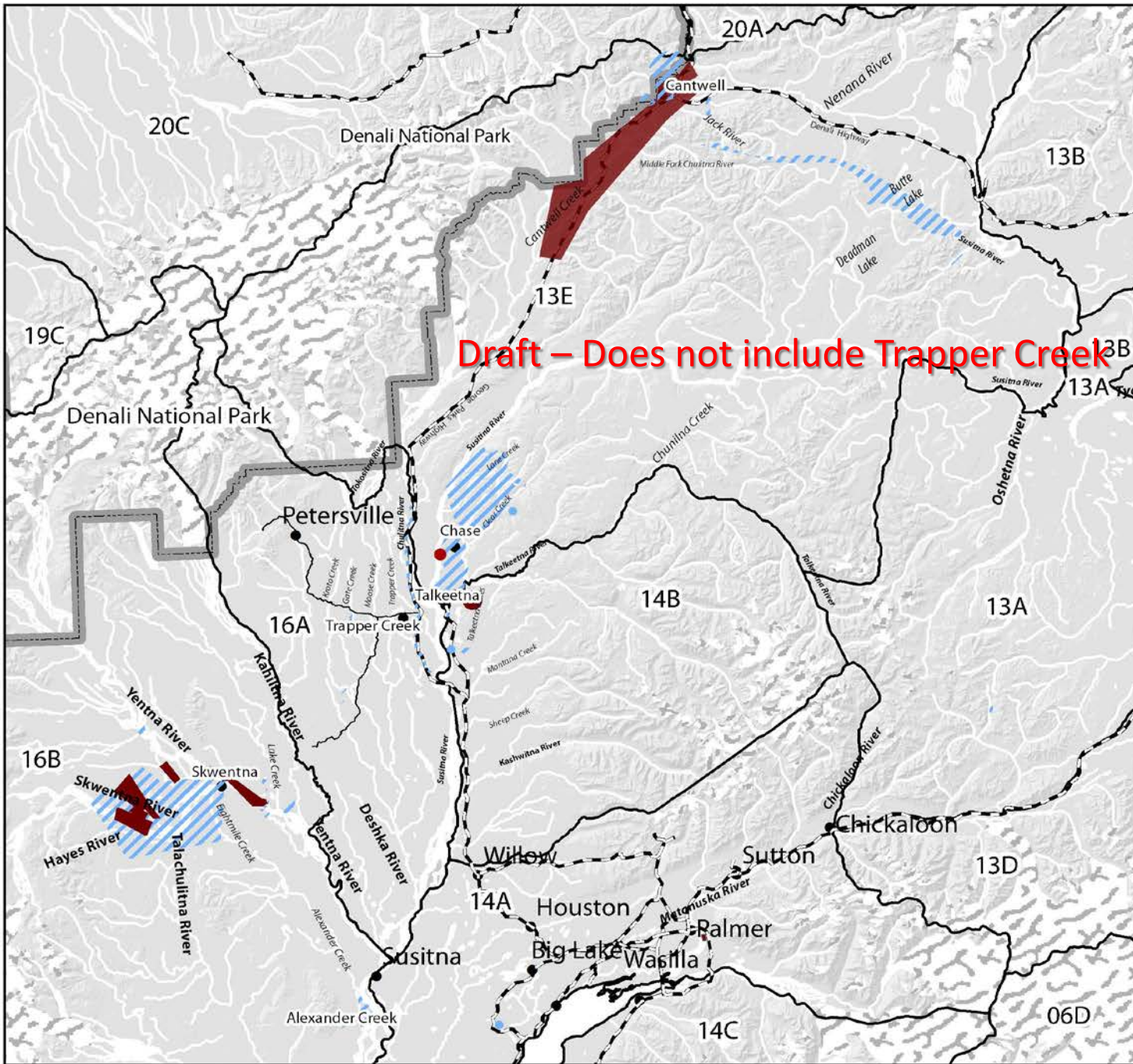
Park and Preserve Boundary

Game Management Units

Game Management Units

Source: Alaska Department of Fish and Game, Division of Subsistence household surveys, 2013. Technical Paper Number 385, The harvest and use of wild resources in Cantwell, Chase, Talkeetna, Trapper Creek, Susitna Station/ Alexander Creek, and Skwentna Alaska, 2012.



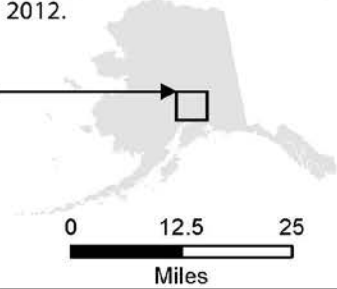


Draft - Does not include Trapper Creek

ALL COMMUNITIES HARVEST OF WILD RESOURCES, 2012

-  Upland Game Birds Harvest Areas
-  Migratory Waterfowl Harvest Areas
-  Highway
-  Park and Preserve Boundary
-  Game Management Units

Source: Alaska Department of Fish and Game, Division of Subsistence household surveys, 2013. Technical Paper Number 385, The harvest and use of wild resources in Cantwell, Chase, Talkeetna, Trapper Creek, Susitna Station/ Alexander Creek, and Skwentna Alaska, 2012.

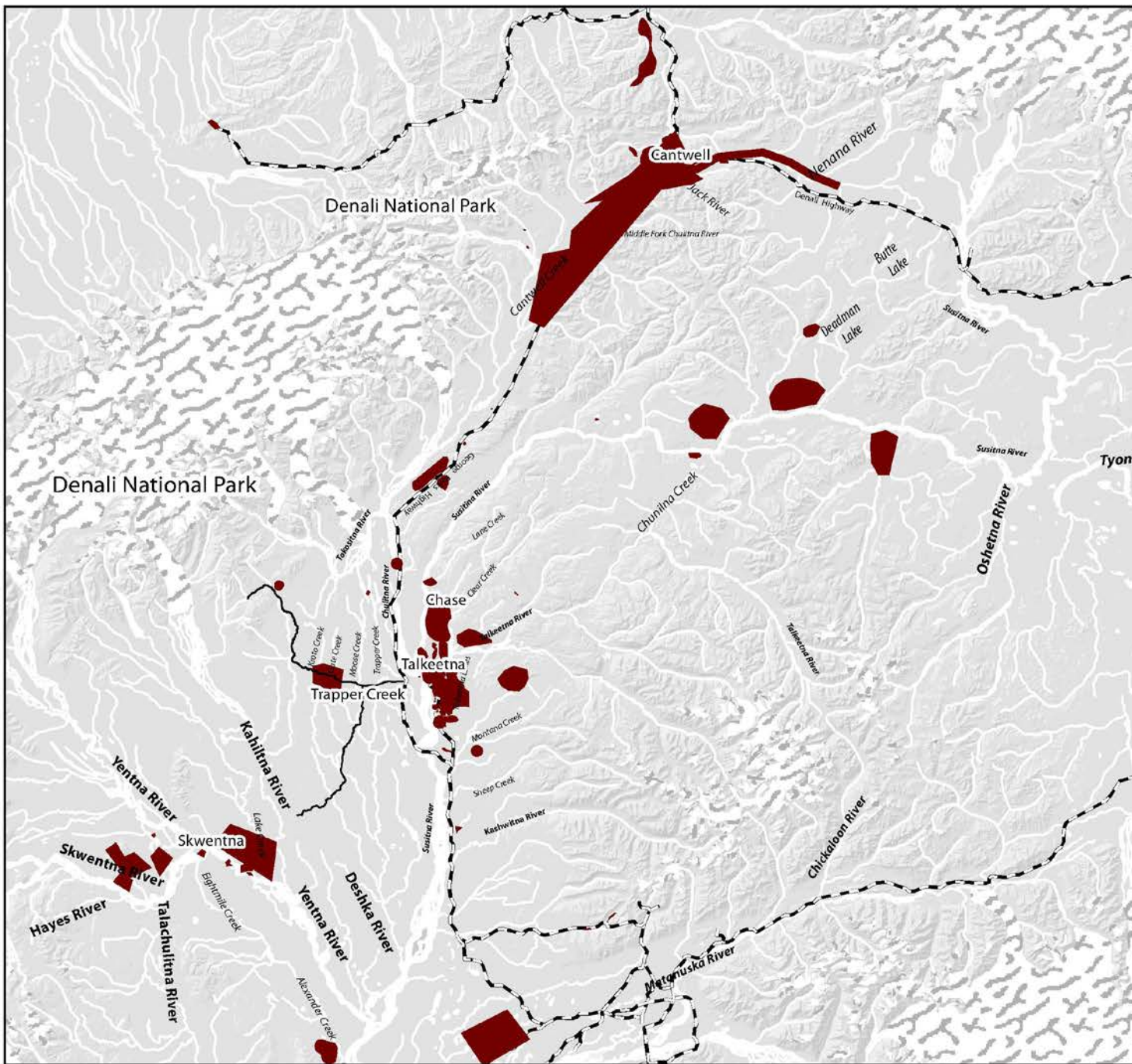
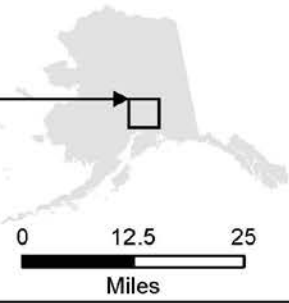




ALL COMMUNITIES HARVEST OF WILD RESOURCES, 2012

- Berry Harvest Area
- Highway
- Park and Preserve Boundary

Source: Alaska Department of Fish and Game, Division of Subsistence household surveys, 2013. Technical Paper Number 385, The harvest and use of wild resources in Cantwell, Chase, Talkeetna, Trapper Creek, Susitna Station/ Alexander Creek, and Skwentna Alaska, 2012.



- *No Variances*

Household Harvest Surveys– Next Steps

September 2013

October-November 2013

January-March 2014

January-March 2014

February-July 2014

July 2014

July-September 2014

September-October 2014

November-December 2014

February 2015

Project planning meeting

Community scoping meetings

Household surveys

Key respondent interviews

Data entry and review; production of maps

Data review workshop

Prepare draft study findings report

Community findings review meetings

Preparing report

Updated Study Report

