



SUSITNA-WATANA HYDROELECTRIC PROJECT

Cultural and Paleontological Resources Technical Working Group

June 12, 2013

Prepared by Charles M. Mobley & Associates, Northern
Land Use Research Alaska LLC, and URS Corporation



Cultural Resources Study (RSP 13.5)

- Archaeological Inventory and Evaluation - ongoing
- Ethnogeography Investigation – ongoing
- Paleoenvironmental Investigation – planned for 2014
- Facilities Survey – 2012 effort reported upon; none yet in 2013

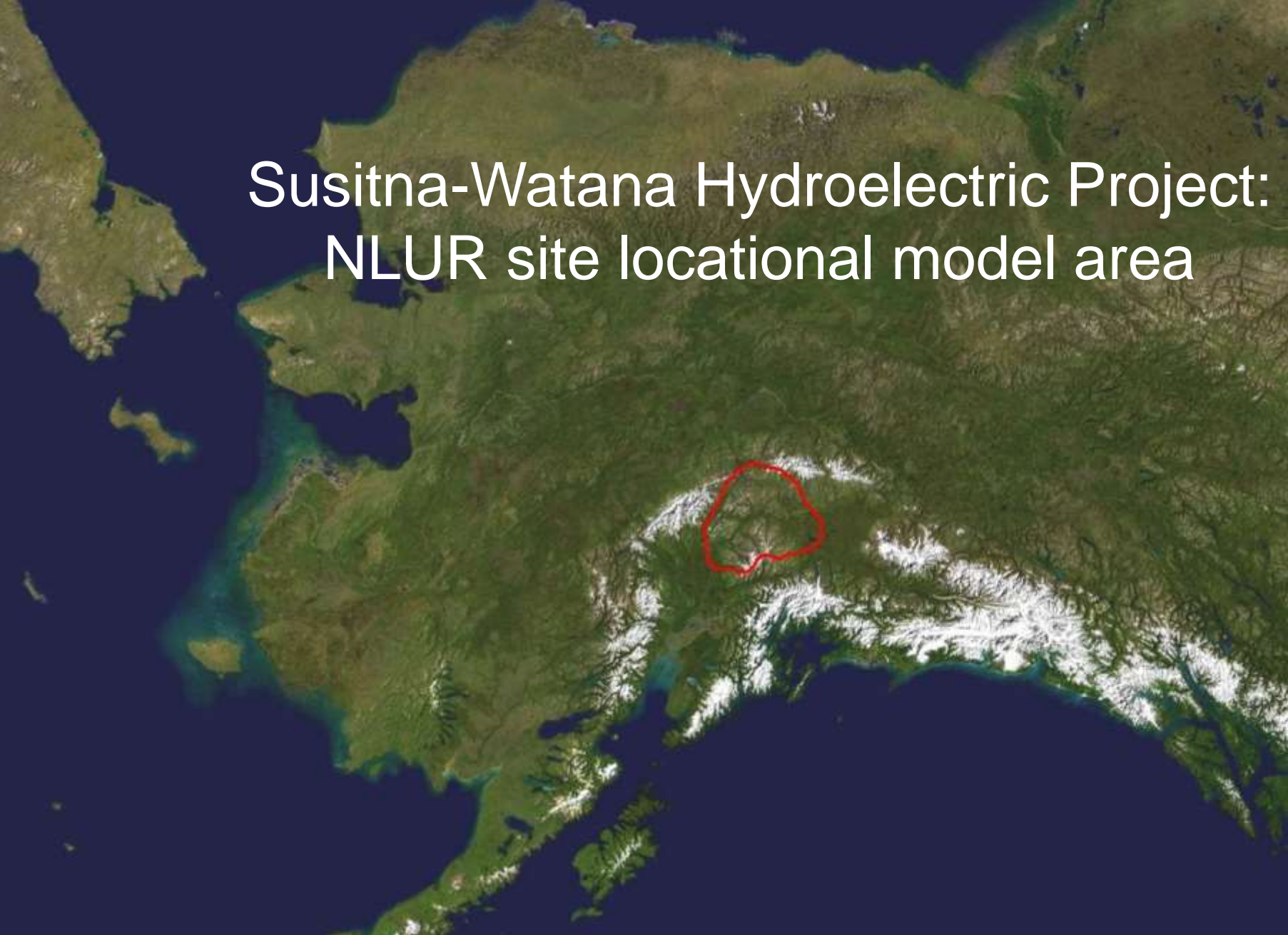
Paleontological Resources Study (RSP 13.6)

- Paleontological Inventory – Overview in 2012; work planned for 2014 to incorporate results of geology, soils, and geomorphological investigations.

Archaeological Inventory and Evaluation

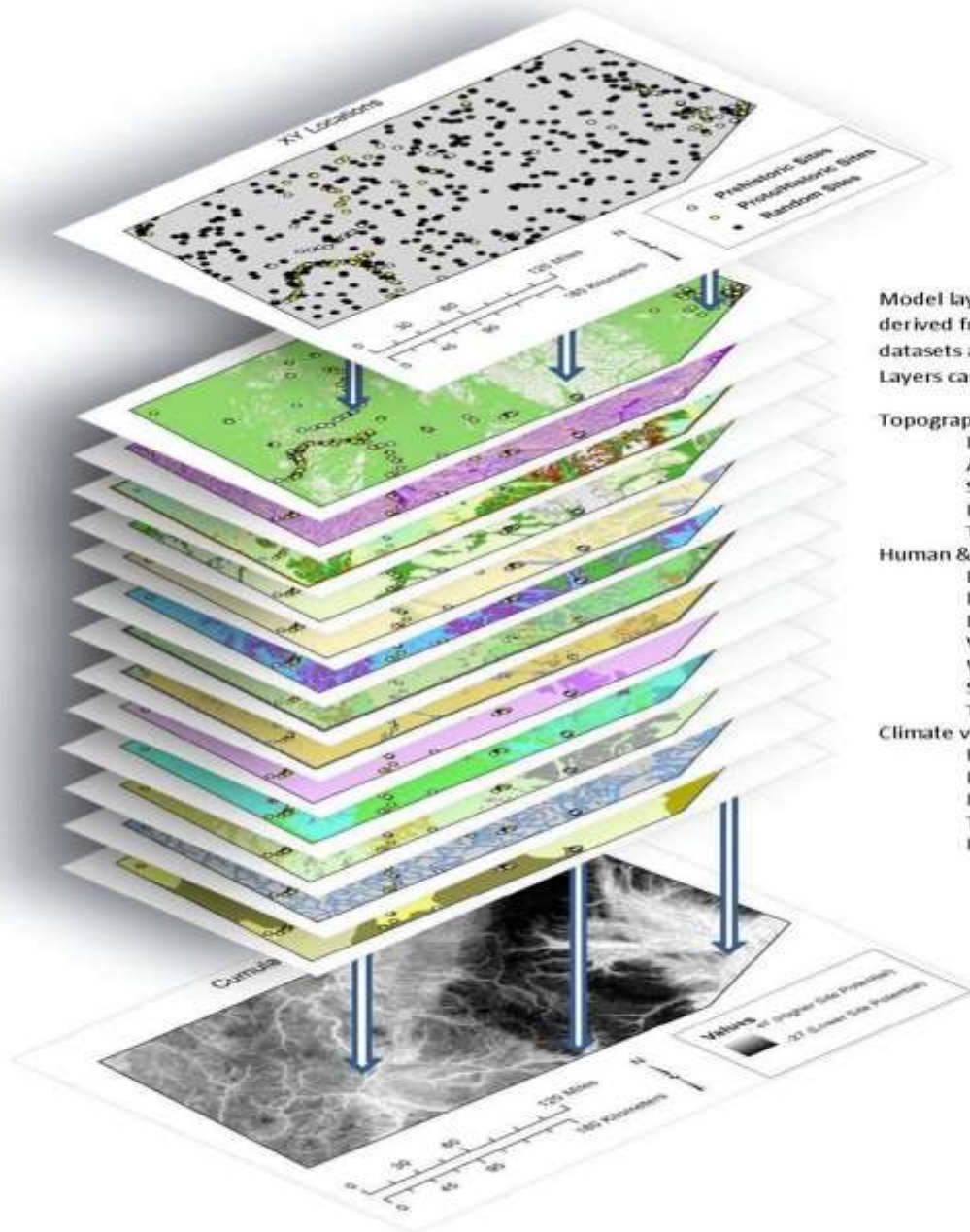
- **2012 cultural resource report distributed and all permit stipulations met**
- **Participated in the Ahtna Elder's Conference March 26**
- **Conducted aerial reconnaissance May 10-11**
- **Hired 40+ field technicians, archaeologists, GIS specialists, and student intern**
- **Scheduled specialized field training for all employees**
- **Arranged logistics to station crews and two dedicated helicopters at Stephan Lake Camp**
- **Applied for field permits on State and Federal lands**
- **2013 planning, reporting, and analyses are ongoing**
- **Field work scheduled for June 24 through August 31**

Susitna-Watana Hydroelectric Project: NLUR site locational model area



Communities in the study region





Model layers are comprised of data derived from downloadable GIS datasets and other digital sources. Layers can include:

Topographic variables

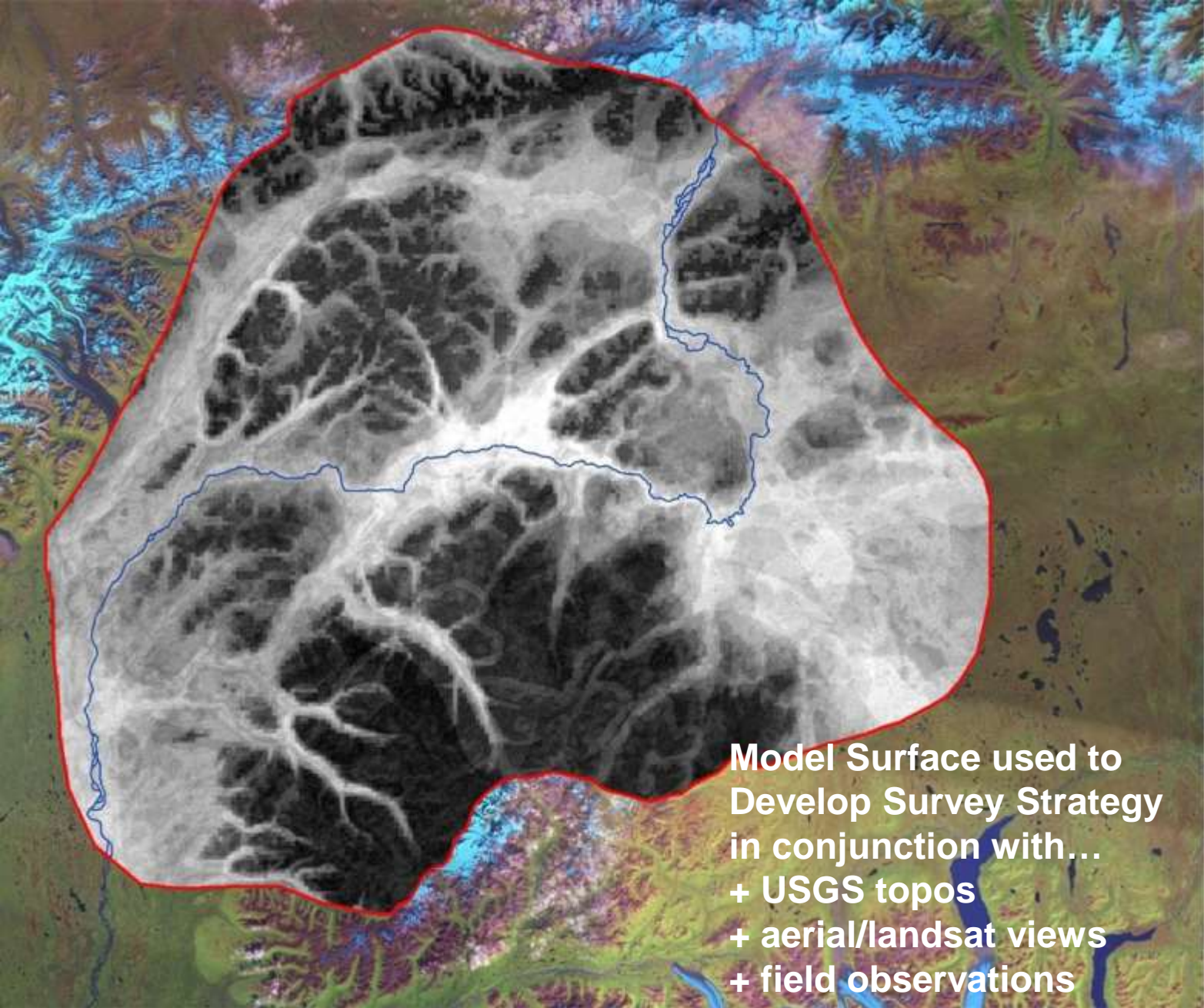
- DEM (elevation)
- Aspect
- Slope
- Hydrology
- Terrain (terraces)

Human & Resource variables

- Distance to creeks
- Distance to main rivers
- Distances to trails
- Vegetation
- Wildlife
- Surface geology
- Tool stone

Climate variables

- Ecosystems
- Permafrost
- Prevailing wind
- Temperature
- Precipitation



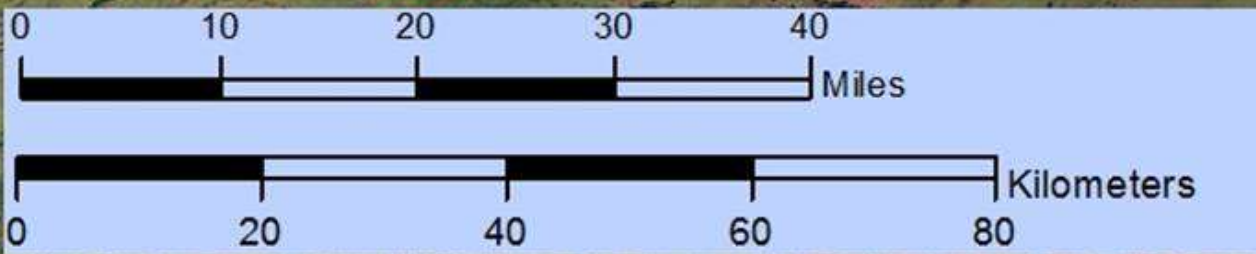
**Model Surface used to
Develop Survey Strategy
in conjunction with...**

- + USGS topos**
- + aerial/landsat views**
- + field observations**

Previous archaeological work in the study area

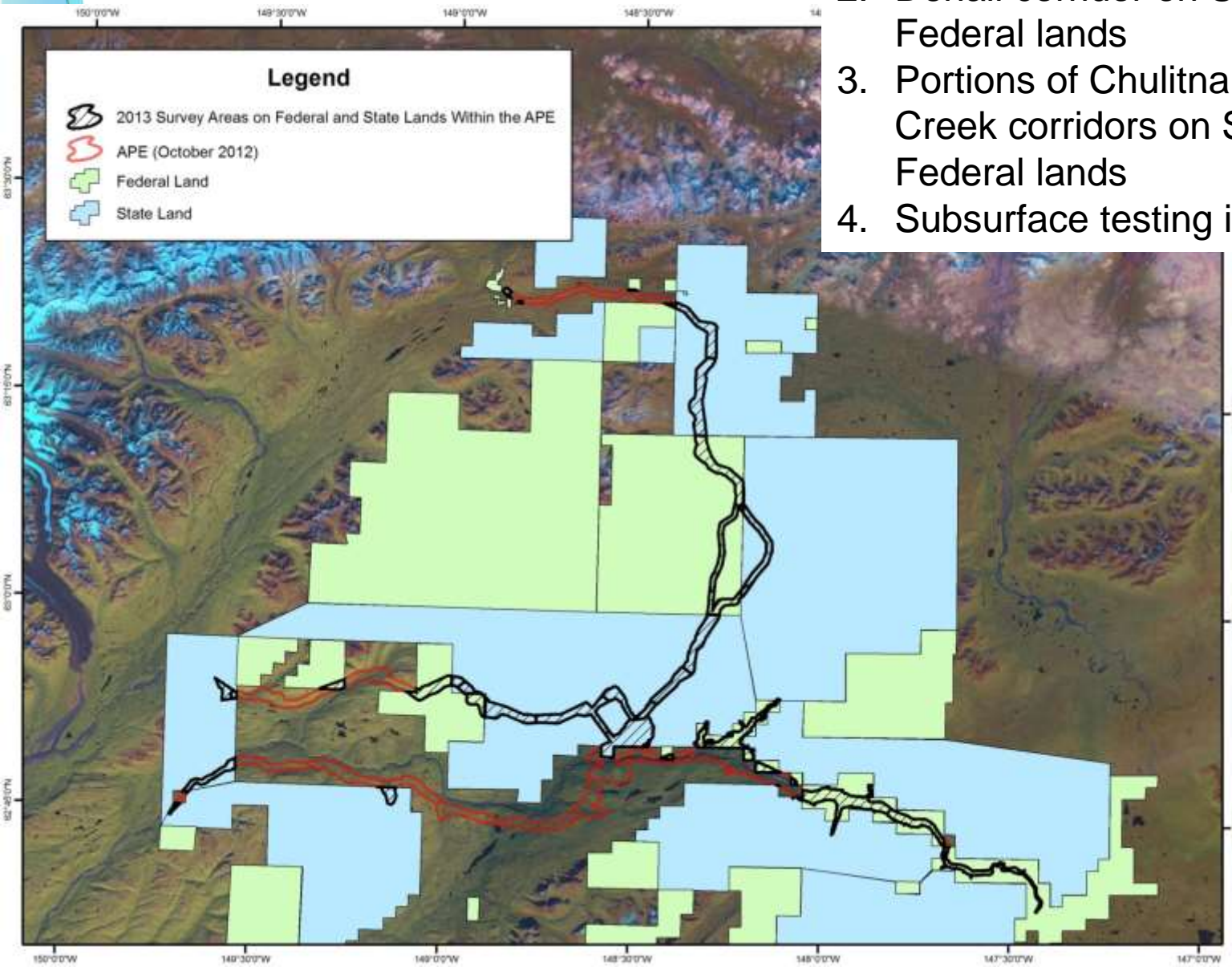
Greiser sampled and tested locations 1985-1986

Dixon sampled and tested locations 1979-1985



Known AHRs Site Inventory and Survey Priorities for 2013:

1. Reservoir area on State and Federal lands
2. Denali corridor on State and Federal lands
3. Portions of Chulitna and Gold Creek corridors on State and Federal lands
4. Subsurface testing if time permits



Ethnogeography Investigation

- **Dena'ina investigation will be conducted in 2014**
- **Final Elder's meeting planned for 2014**
- **Continue with literature review**
- **Continue identifying sources of oral history information**
- **Continue translation of Ahtna narratives**



Ethnogeography Investigation (continued)

- **Cantwell Elder's meeting held March 26, 2013**
- **Over 30 people attended the meeting**
 - **Presentations by**
 - **Wayne Dyok of the Alaska Energy Authority**
 - **Paul Laurence of Stephen Braund and Associates**
 - **Chuck Mobley of Charles M. Mobley and Associates**
 - **Erica McCall Valentine of Ahtna, Incorporated**
 - **Jim Kari subcontractor with URS**

Ethnogeography Investigations (continued)

Questions by audience

- **How can we contact AEA?**
- **How will Cantwell benefit?**
- **Why no transmission line to the Copper River valley?**
- **Concerns about increased hunting pressure**
- **Who will own cultural resources data?**
- **What long-term protections are there for Ahtna lands?**
- **What opportunities for employment?**

Paleoenvironmental Investigation

- **Lake coring planned in 2014**
- **Data analysis can take six months plus**
- **Preliminary results will be available for evaluation and potential use by the cultural resources study team**
- **Final results will be incorporated into the Historic Properties Management Plan (HPMP)**

2013 Study Facilities Survey

- **None to report on to date**
- **Surveys will be done as needed throughout 2013 and 2014**

Paleontological Inventory

- **Slated for 2014**
- **One-year study**
- **Provides time to assimilate results of 2013 geology/soils and geomorphological studies**
- **No other studies are directly dependent on results of paleontological inventory**