

APPENDIX 2. 2012 MIDDLE SUSITNA RIVER SEGMENT GEOMORPHIC FEATURES

**Susitna-Watana Hydroelectric Project
(FERC No. 14241)**

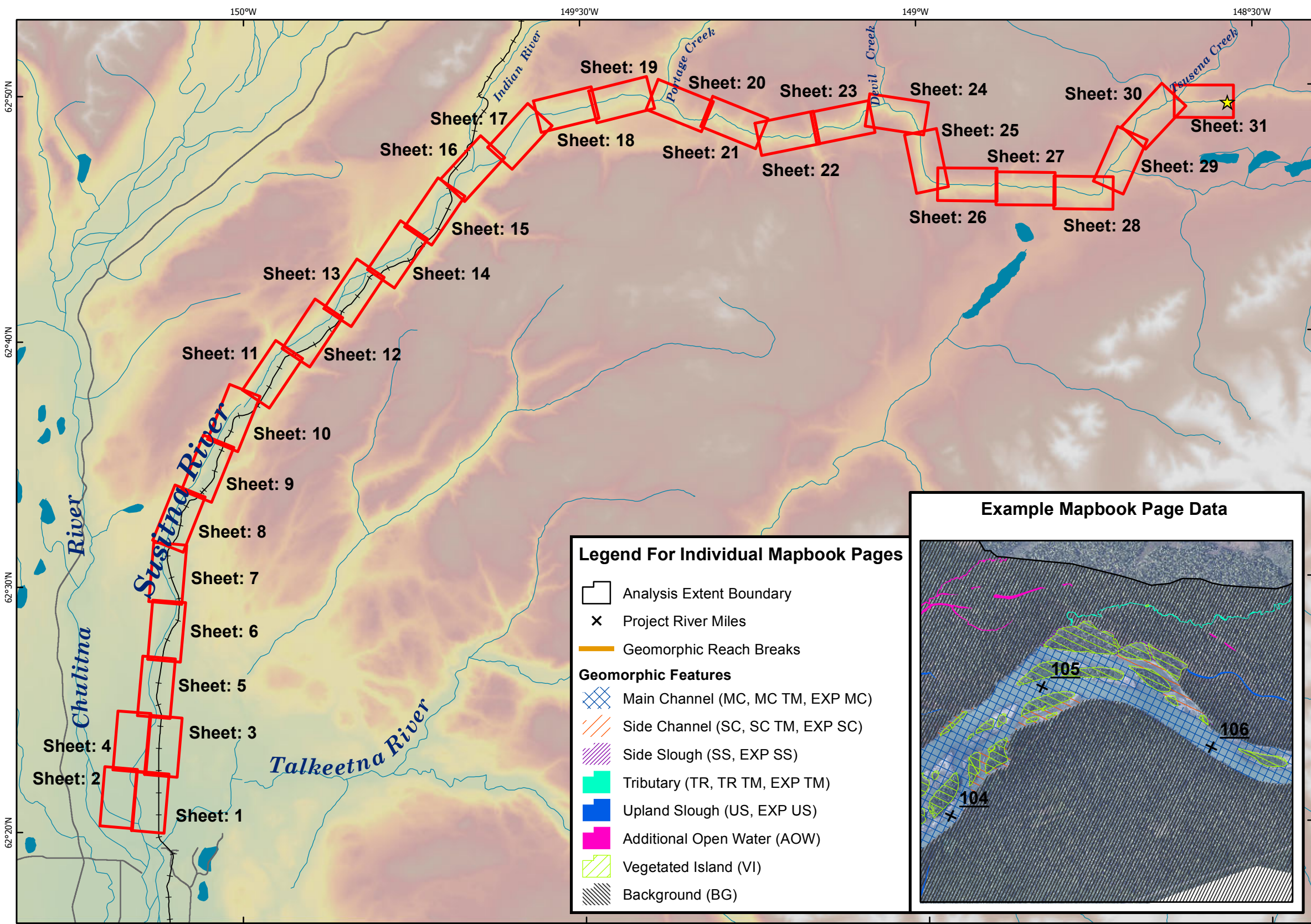
**Mapping of Geomorphic Features within the Middle and Lower
Susitna River Segments from 1980s and 2012 Aerials**

2012 Study Technical Memorandum



Prepared by
Tetra Tech Inc.

March 2013

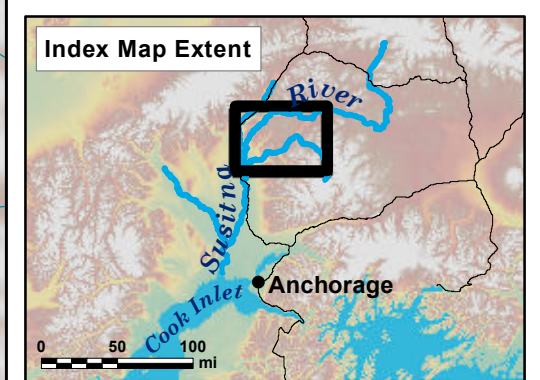
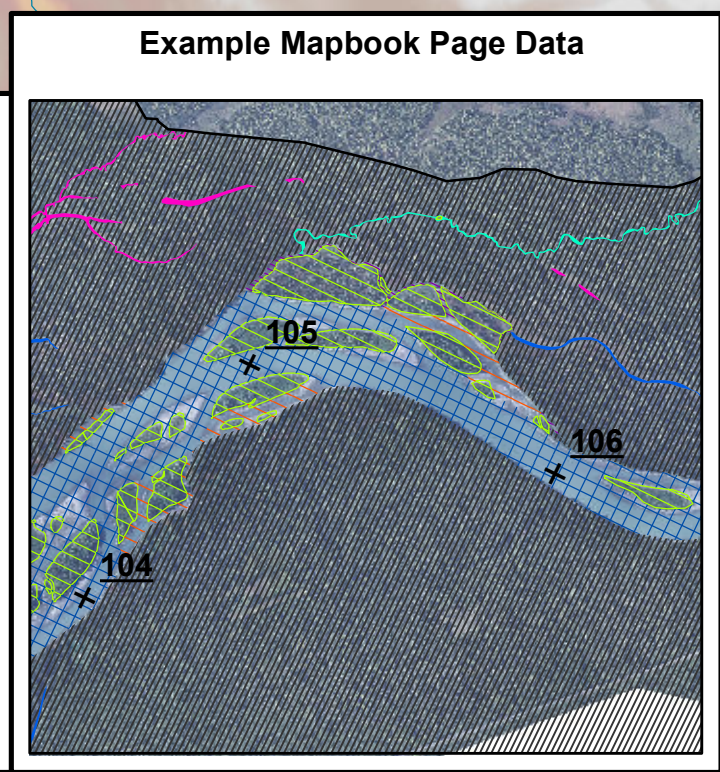


MIDDLE SUSITNA RIVER SEGMENT GEOMORPHIC FEATURES 2012

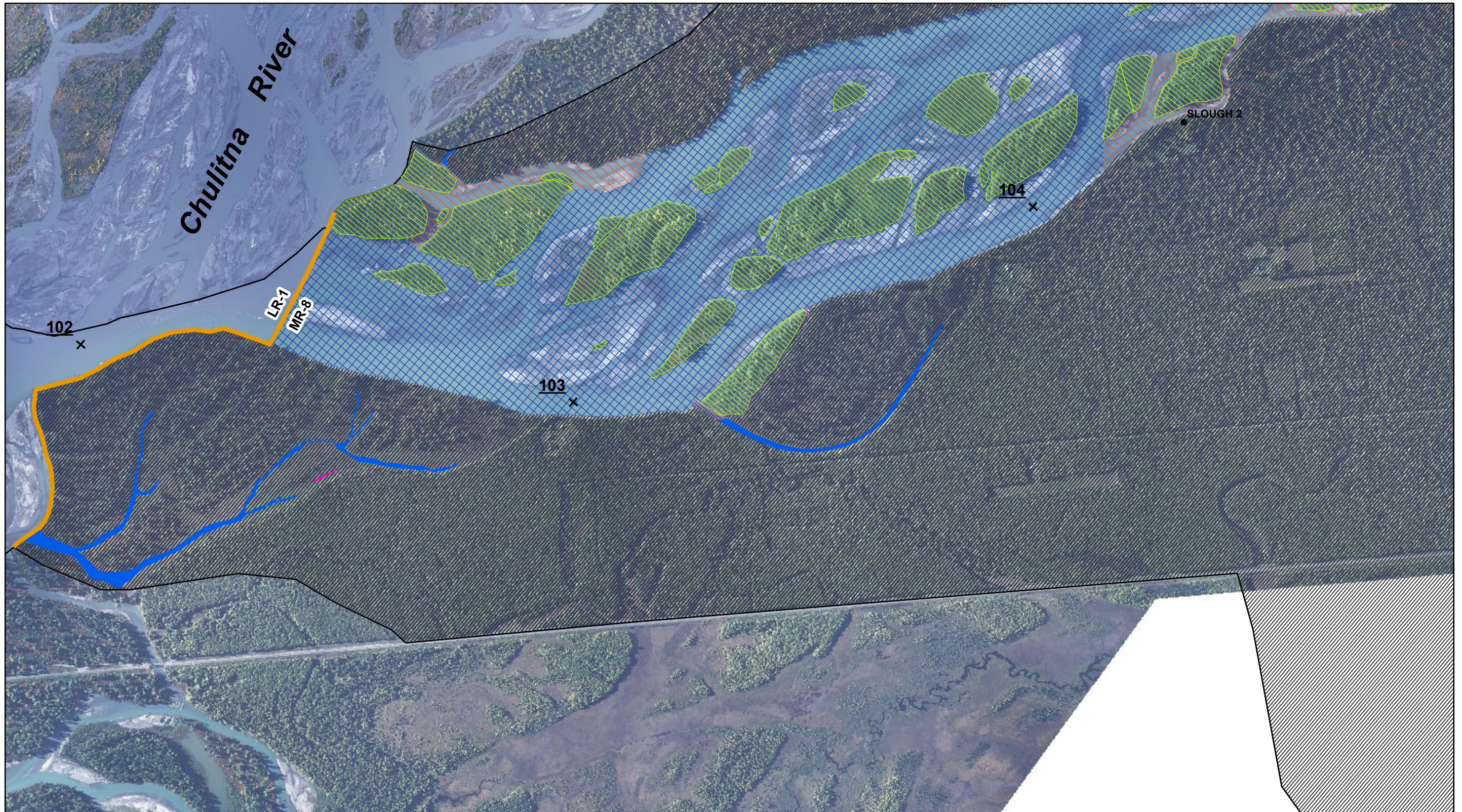
- Legend**
- Sheet Extents
 - ★ Proposed Watana Dam Site
 - Roads
 - +— Railroads
 - ~ Rivers and Streams
 - Waterbodies

Data Sources: See Map References

- Legend For Individual Mapbook Pages**
- Analysis Extent Boundary
 - × Project River Miles
 - Geomorphic Reach Breaks
 - Geomorphic Features**
 - Main Channel (MC, MC TM, EXP MC)
 - Side Channel (SC, SC TM, EXP SC)
 - Side Slough (SS, EXP SS)
 - Tributary (TR, TR TM, EXP TM)
 - Upland Slough (US, EXP US)
 - Additional Open Water (AOW)
 - Vegetated Island (VI)
 - Background (BG)



Projection: NAD83 State Plane Alaska 4 FIPS 5004 (ft)
 Date Created: 3/14/2013
 Map Author: Tetra Tech
 File: 2012_MapbookGeomorph_Middle_v1.mxd



0 1,000 2,000 Feet
1 inch = 1,000 feet

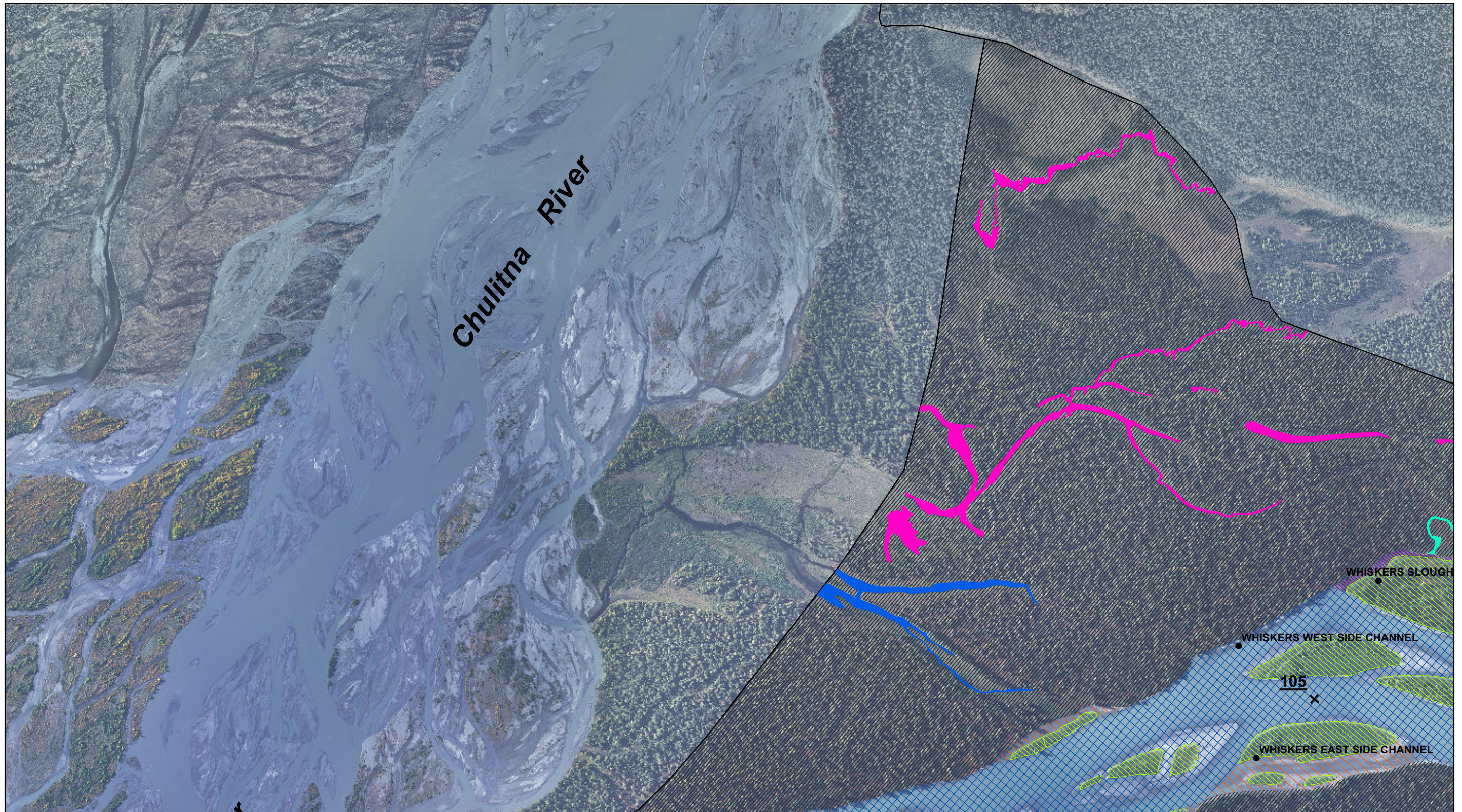
See index page for legend and additional data information.

Sheet 1 of 31

**MIDDLE SUSITNA RIVER SEGMENT
2012 GEOMORPHIC FEATURES**

Location:	Imagery Date:	Discharge (Gold Creek)
PRM 102.4 - 143.6:	09/10/2012,	12,900 cfs
PRM 143.6 - 187.1:	09/30/2012,	17,000 cfs





0 1,000 2,000 Feet 1 inch = 1,000 feet

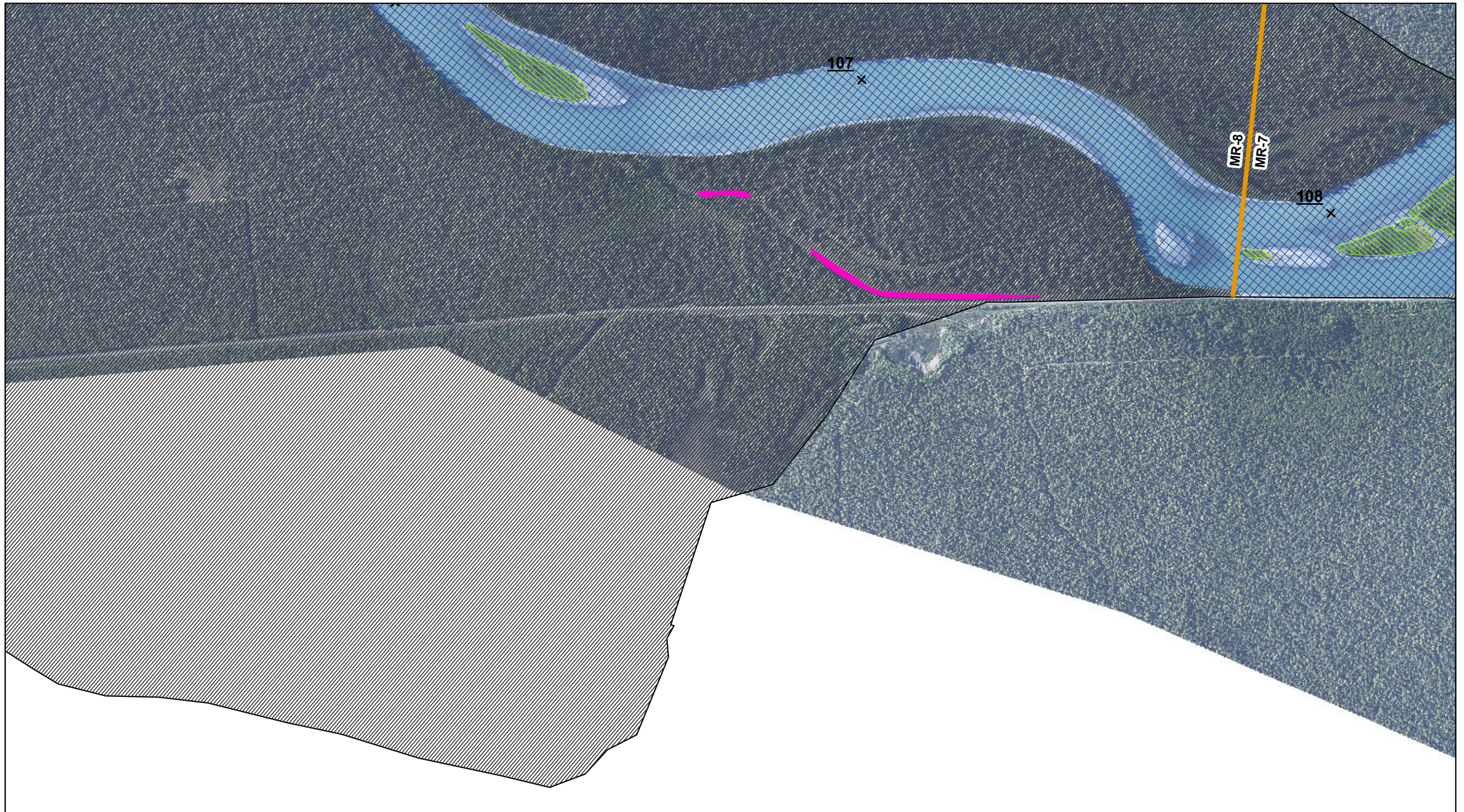
See index page for legend and additional data information.

Sheet 2 of 31

**MIDDLE SUSITNA RIVER SEGMENT
2012 GEOMORPHIC FEATURES**

Location:	Imagery Date:	Discharge (Gold Creek)
PRM 102.4 - 143.6:	09/10/2012,	12,900 cfs
PRM 143.6 - 187.1:	09/30/2012,	17,000 cfs





0 1,000 2,000 Feet 1 inch = 1,000 feet

See index page for legend and additional data information.

Sheet 3 of 31

**MIDDLE SUSITNA RIVER SEGMENT
2012 GEOMORPHIC FEATURES**

Location:	Imagery Date:	Discharge (Gold Creek)
PRM 102.4 - 143.6:	09/10/2012,	12,900 cfs
PRM 143.6 - 187.1:	09/30/2012,	17,000 cfs





0 1,000 2,000 Feet 1 inch = 1,000 feet

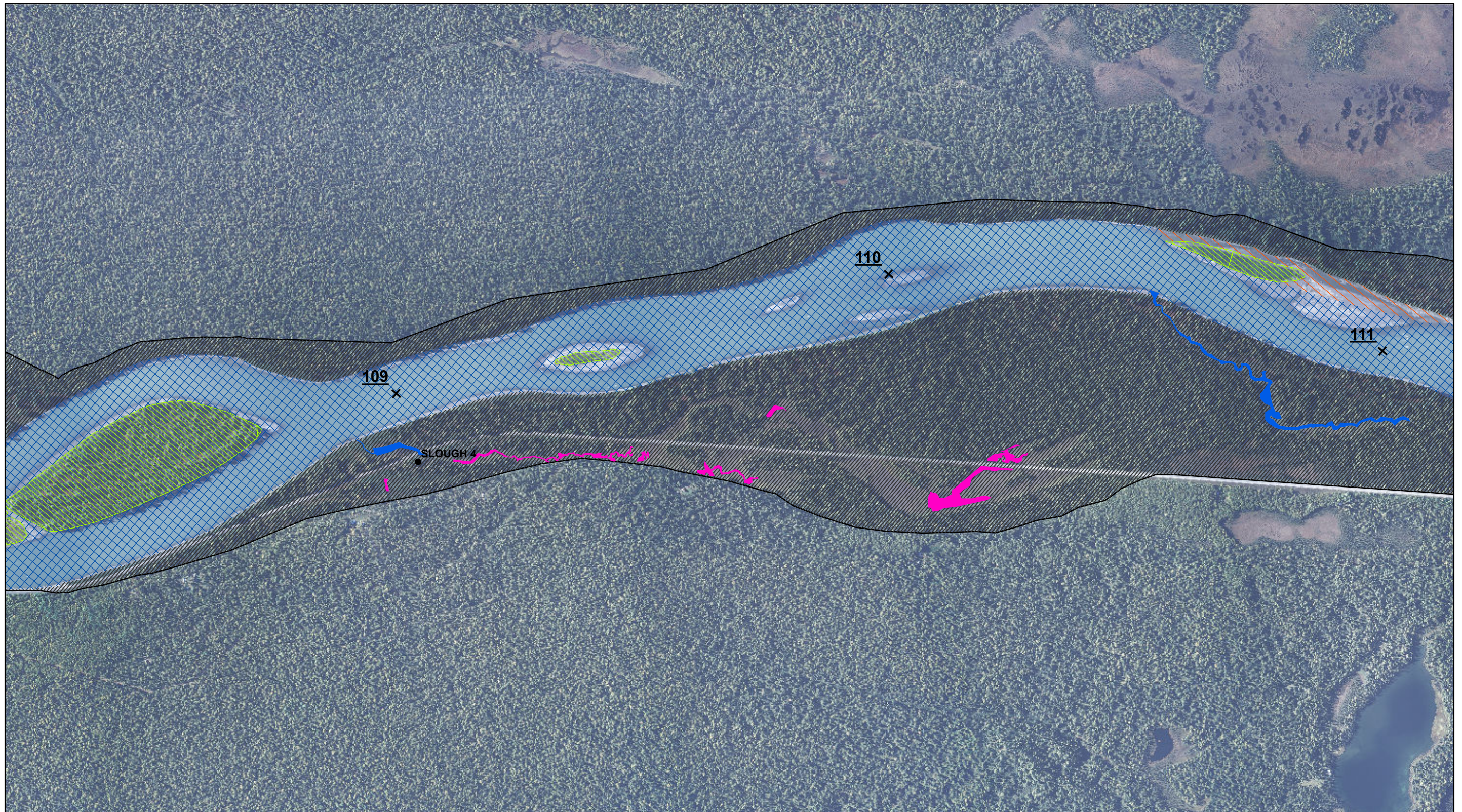
See index page for legend and additional data information.

Sheet 4 of 31

**MIDDLE SUSITNA RIVER SEGMENT
2012 GEOMORPHIC FEATURES**

Location:	Imagery Date:	Discharge (Gold Creek)
PRM 102.4 - 143.6:	09/10/2012,	12,900 cfs
PRM 143.6 - 187.1:	09/30/2012,	17,000 cfs





0 1,000 2,000 Feet 1 inch = 1,000 feet

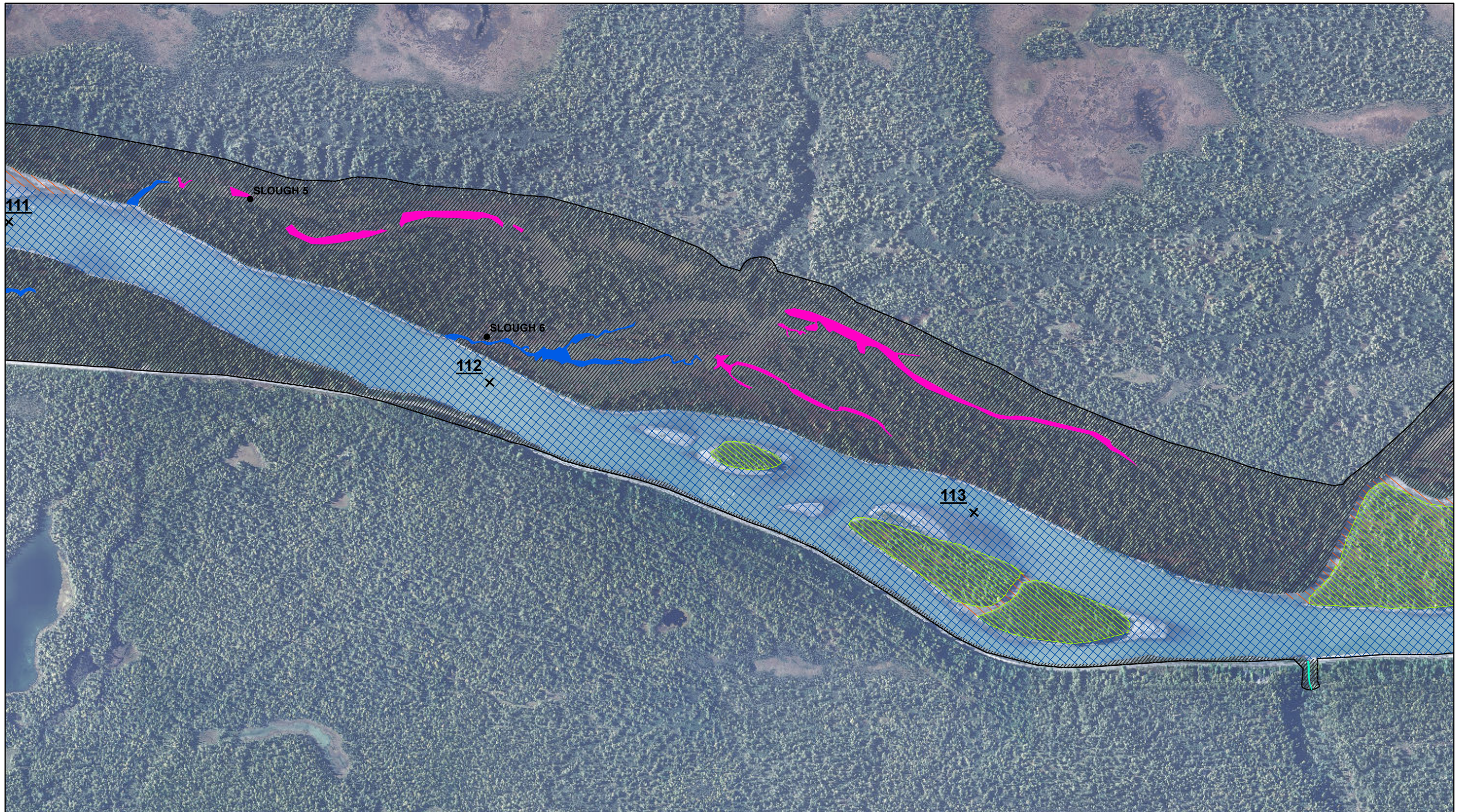
See index page for legend and additional data information.

Sheet 5 of 31

**MIDDLE SUSITNA RIVER SEGMENT
2012 GEOMORPHIC FEATURES**

Location:	Imagery Date:	Discharge (Gold Creek)
PRM 102.4 - 143.6:	09/10/2012,	12,900 cfs
PRM 143.6 - 187.1:	09/30/2012,	17,000 cfs





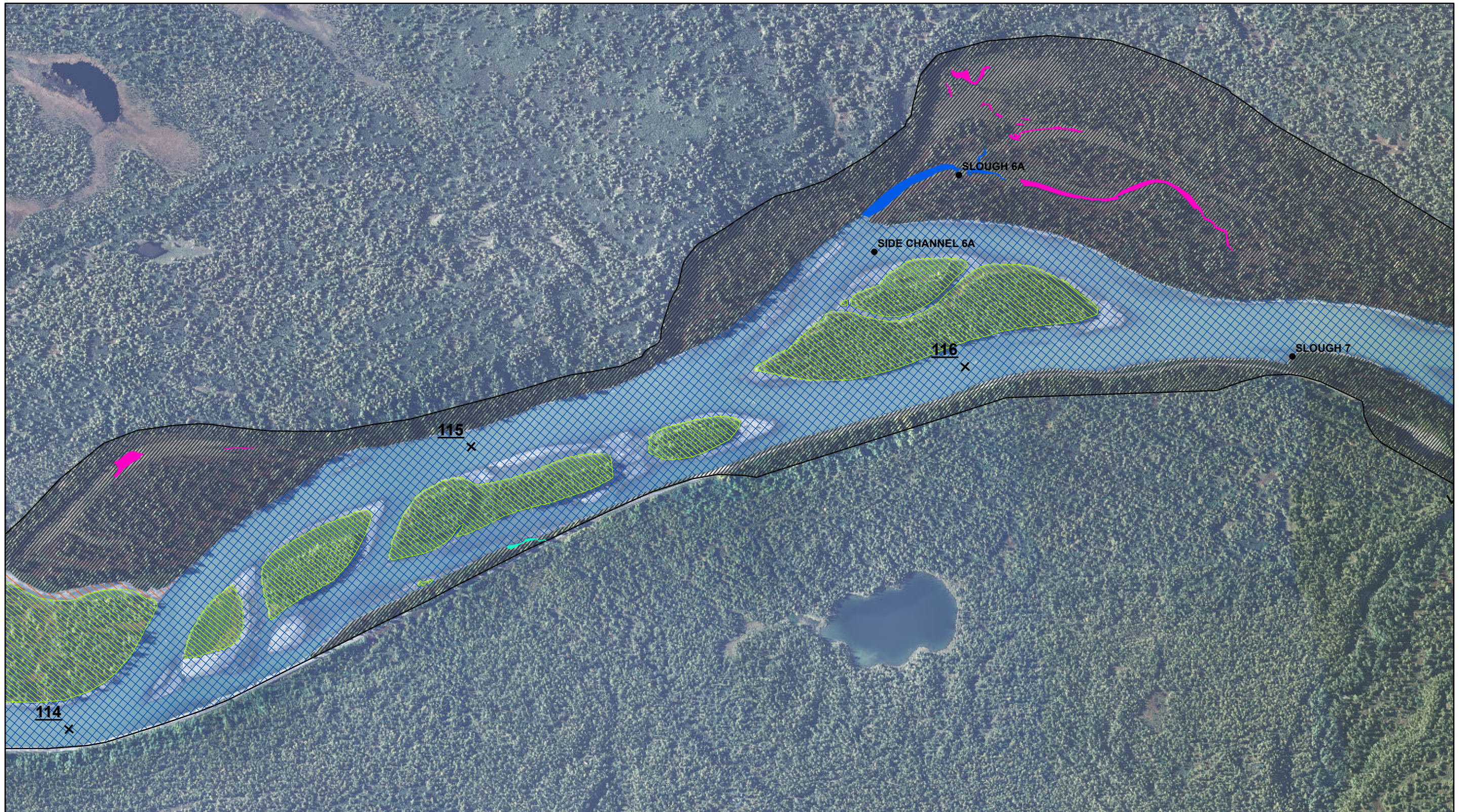
0 1,000 2,000 Feet 1 inch = 1,000 feet
 See index page for legend and additional data information.

Sheet 6 of 31

**MIDDLE SUSITNA RIVER SEGMENT
 2012 GEOMORPHIC FEATURES**

Location:	Imagery Date:	Discharge (Gold Creek)
PRM 102.4 - 143.6:	09/10/2012,	12,900 cfs
PRM 143.6 - 187.1:	09/30/2012,	17,000 cfs





0 1,000 2,000 Feet 1 inch = 1,000 feet

See index page for legend and additional data information.

Sheet 7 of 31

**MIDDLE SUSITNA RIVER SEGMENT
2012 GEOMORPHIC FEATURES**

Location:	Imagery Date:	Discharge (Gold Creek)
PRM 102.4 - 143.6:	09/10/2012,	12,900 cfs
PRM 143.6 - 187.1:	09/30/2012,	17,000 cfs





0 1,000 2,000 Feet 1 inch = 1,000 feet

See index page for legend and additional data information.

Sheet 8 of 31

**MIDDLE SUSITNA RIVER SEGMENT
2012 GEOMORPHIC FEATURES**

Location:	Imagery Date:	Discharge (Gold Creek)
PRM 102.4 - 143.6:	09/10/2012,	12,900 cfs
PRM 143.6 - 187.1:	09/30/2012,	17,000 cfs





0 1,000 2,000 Feet 1 inch = 1,000 feet
 See index page for legend and additional data information.

Sheet 9 of 31

**MIDDLE SUSITNA RIVER SEGMENT
 2012 GEOMORPHIC FEATURES**

Location:	Imagery Date:	Discharge (Gold Creek)
PRM 102.4 - 143.6:	09/10/2012,	12,900 cfs
PRM 143.6 - 187.1:	09/30/2012,	17,000 cfs





0 1,000 2,000 Feet 1 inch = 1,000 feet

See index page for legend and additional data information.

Sheet 10 of 31

**MIDDLE SUSITNA RIVER SEGMENT
2012 GEOMORPHIC FEATURES**

Location:	Imagery Date:	Discharge (Gold Creek)
PRM 102.4 - 143.6:	09/10/2012,	12,900 cfs
PRM 143.6 - 187.1:	09/30/2012,	17,000 cfs





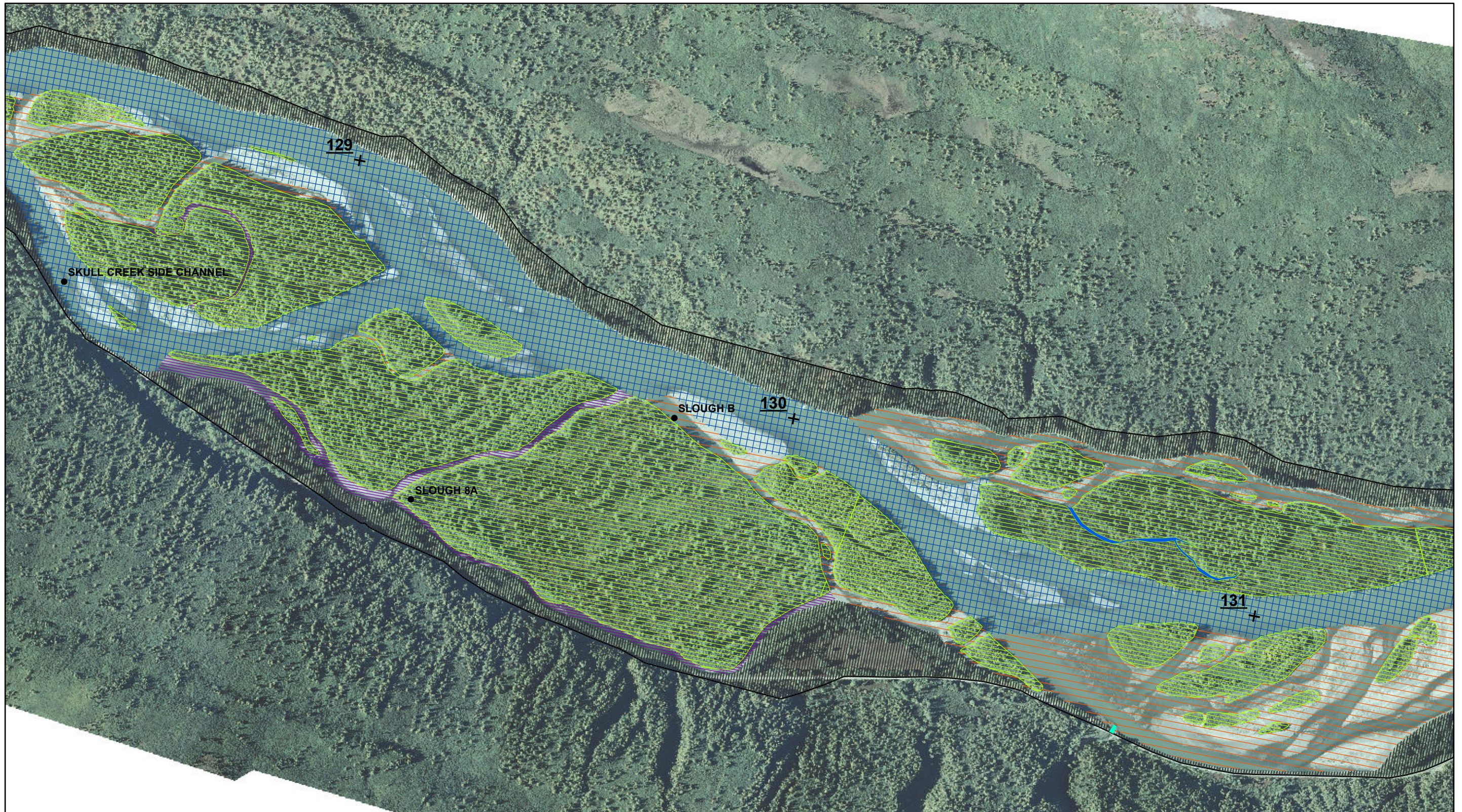
0 1,000 2,000 Feet 1 inch = 1,000 feet
 See index page for legend and additional data information.

Sheet 11 of 31

**MIDDLE SUSITNA RIVER SEGMENT
 2012 GEOMORPHIC FEATURES**

Location:	Imagery Date:	Discharge (Gold Creek)
PRM 102.4 - 143.6:	09/10/2012,	12,900 cfs
PRM 143.6 - 187.1:	09/30/2012,	17,000 cfs





0 1,000 2,000 Feet 1 inch = 1,000 feet

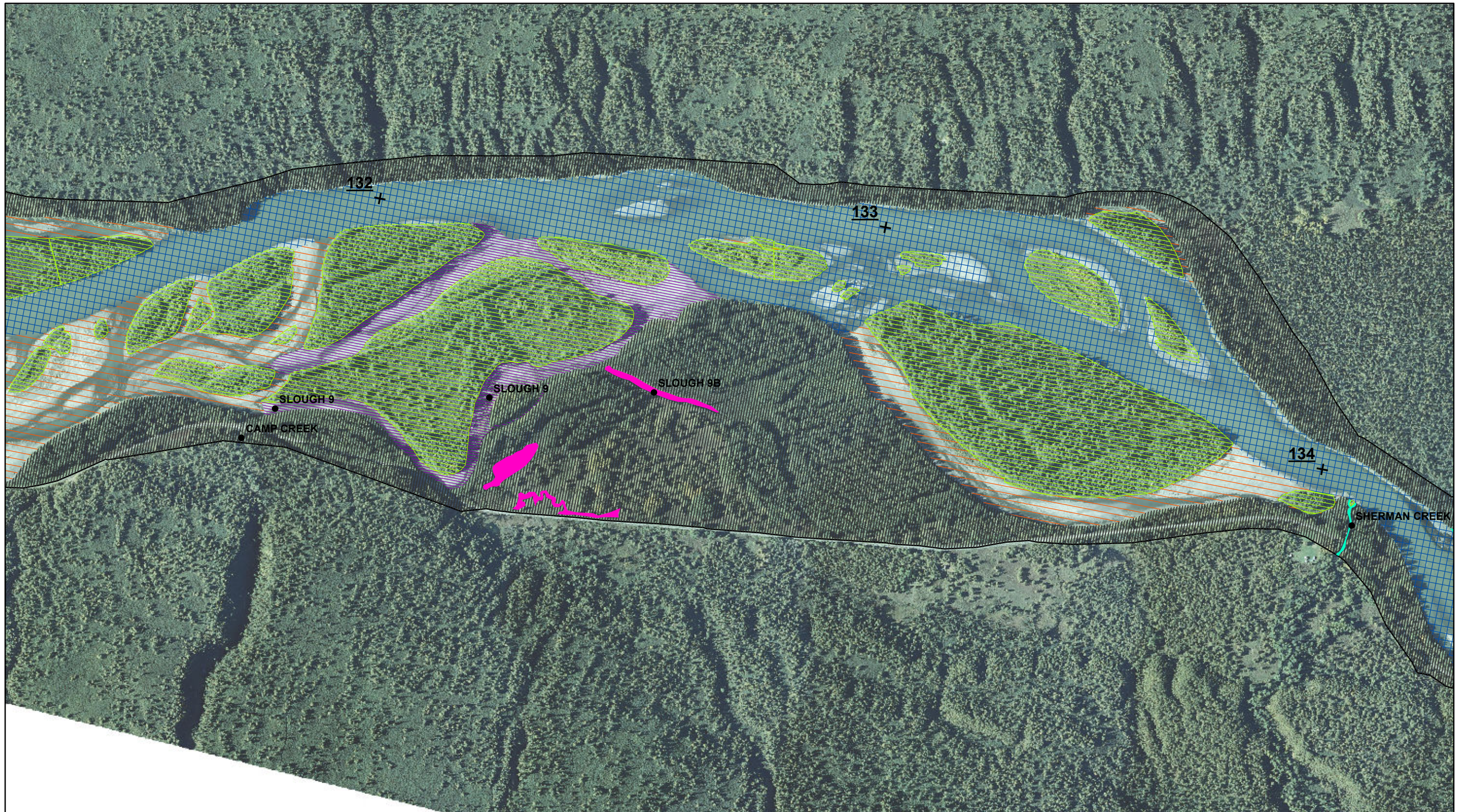
See index page for legend and additional data information.

Sheet 12 of 31

**MIDDLE SUSITNA RIVER SEGMENT
2012 GEOMORPHIC FEATURES**

Location:	Imagery Date:	Discharge (Gold Creek)
PRM 102.4 - 143.6:	09/10/2012,	12,900 cfs
PRM 143.6 - 187.1:	09/30/2012,	17,000 cfs





0 1,000 2,000 Feet 1 inch = 1,000 feet

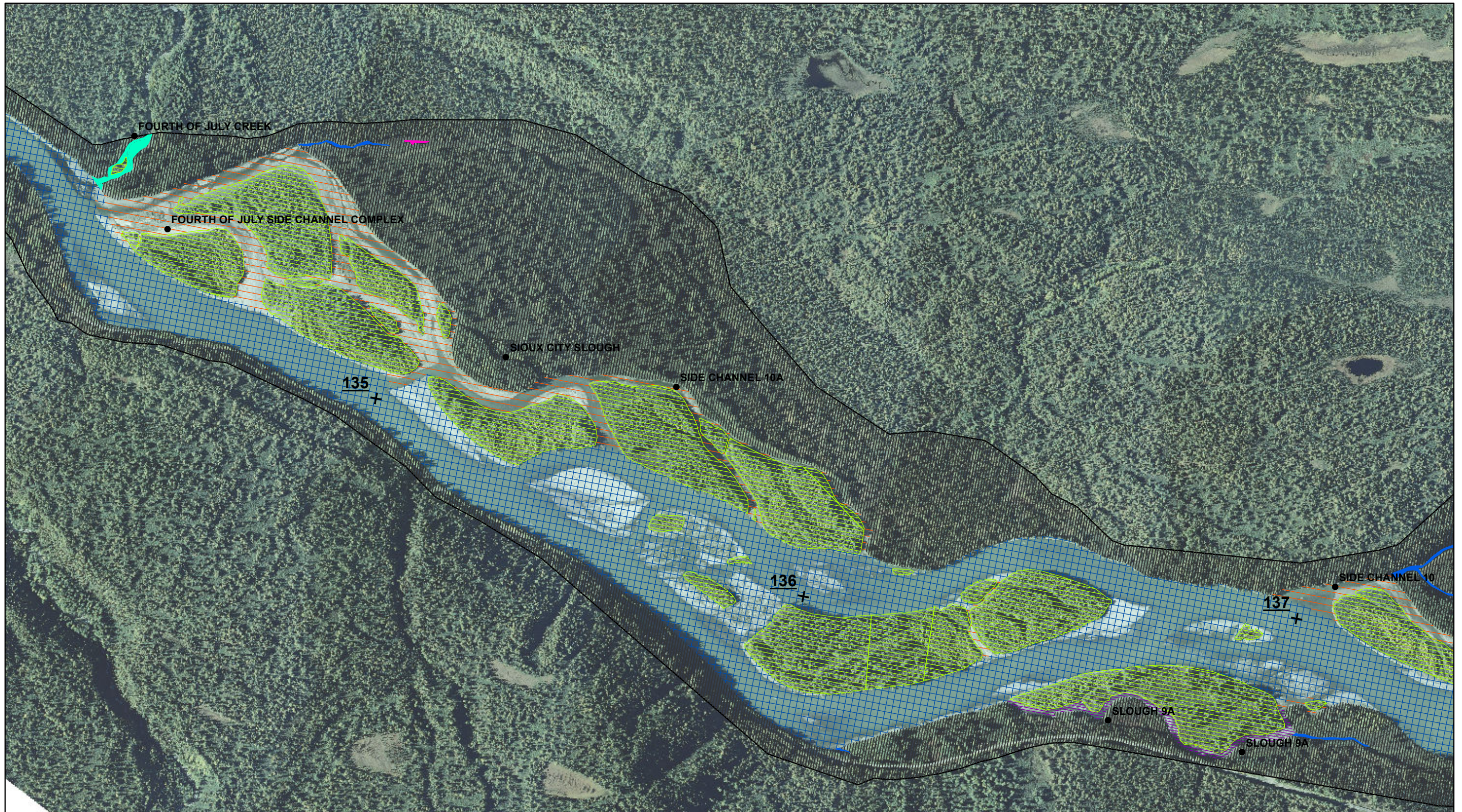
See index page for legend and additional data information.

Sheet 13 of 31

**MIDDLE SUSITNA RIVER SEGMENT
2012 GEOMORPHIC FEATURES**

Location:	Imagery Date:	Discharge (Gold Creek)
PRM 102.4 - 143.6:	09/10/2012,	12,900 cfs
PRM 143.6 - 187.1:	09/30/2012,	17,000 cfs





0 1,000 2,000 Feet 1 inch = 1,000 feet

See index page for legend and additional data information.

Sheet 14 of 31

**MIDDLE SUSITNA RIVER SEGMENT
2012 GEOMORPHIC FEATURES**

Location:	Imagery Date:	Discharge (Gold Creek)
PRM 102.4 - 143.6:	09/10/2012,	12,900 cfs
PRM 143.6 - 187.1:	09/30/2012,	17,000 cfs





0 1,000 2,000 Feet 1 inch = 1,000 feet

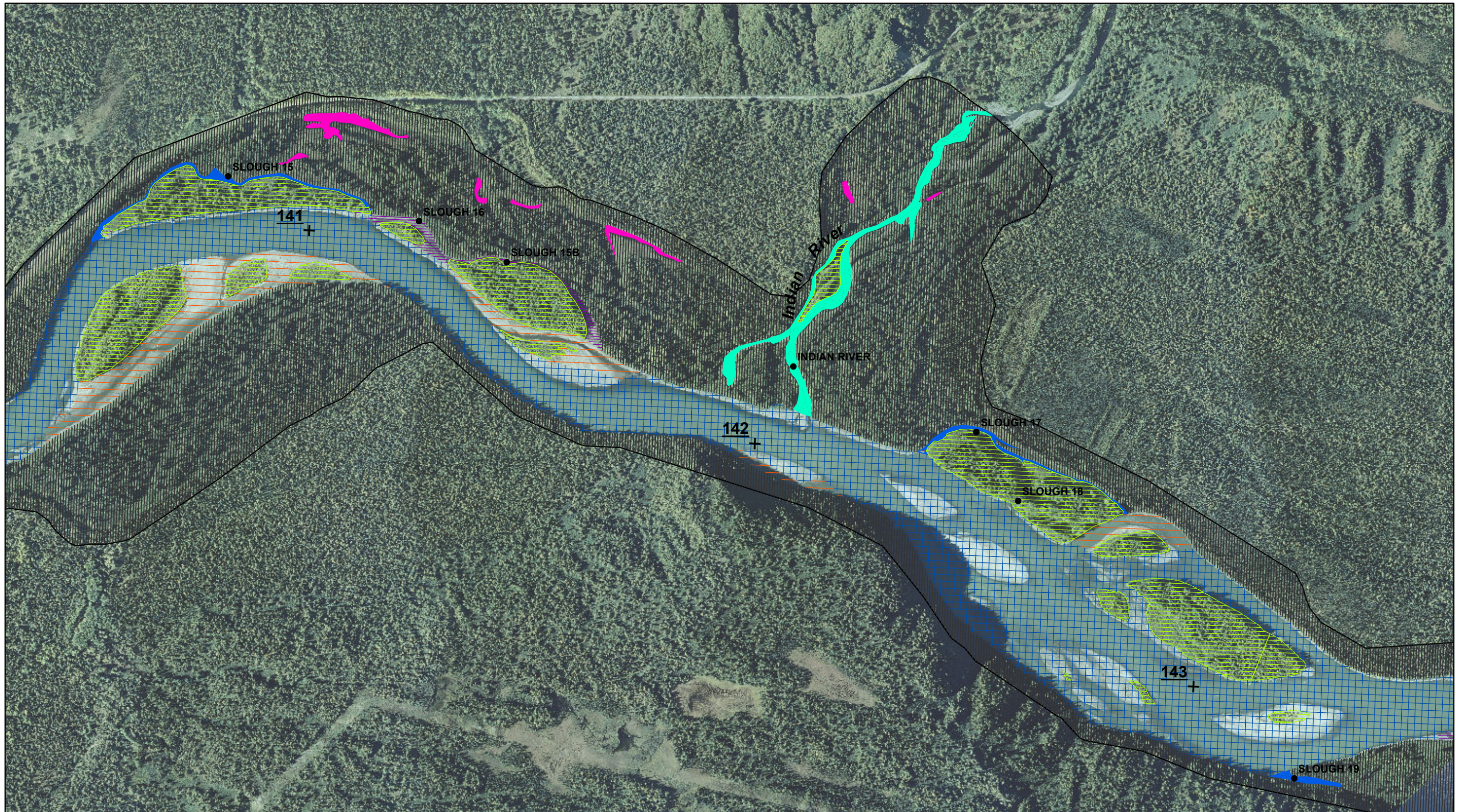
See index page for legend and additional data information.

Sheet 15 of 31

**MIDDLE SUSITNA RIVER SEGMENT
2012 GEOMORPHIC FEATURES**

Location:	Imagery Date:	Discharge (Gold Creek)
PRM 102.4 - 143.6:	09/10/2012,	12,900 cfs
PRM 143.6 - 187.1:	09/30/2012,	17,000 cfs





0 1,000 2,000 Feet 1 inch = 1,000 feet

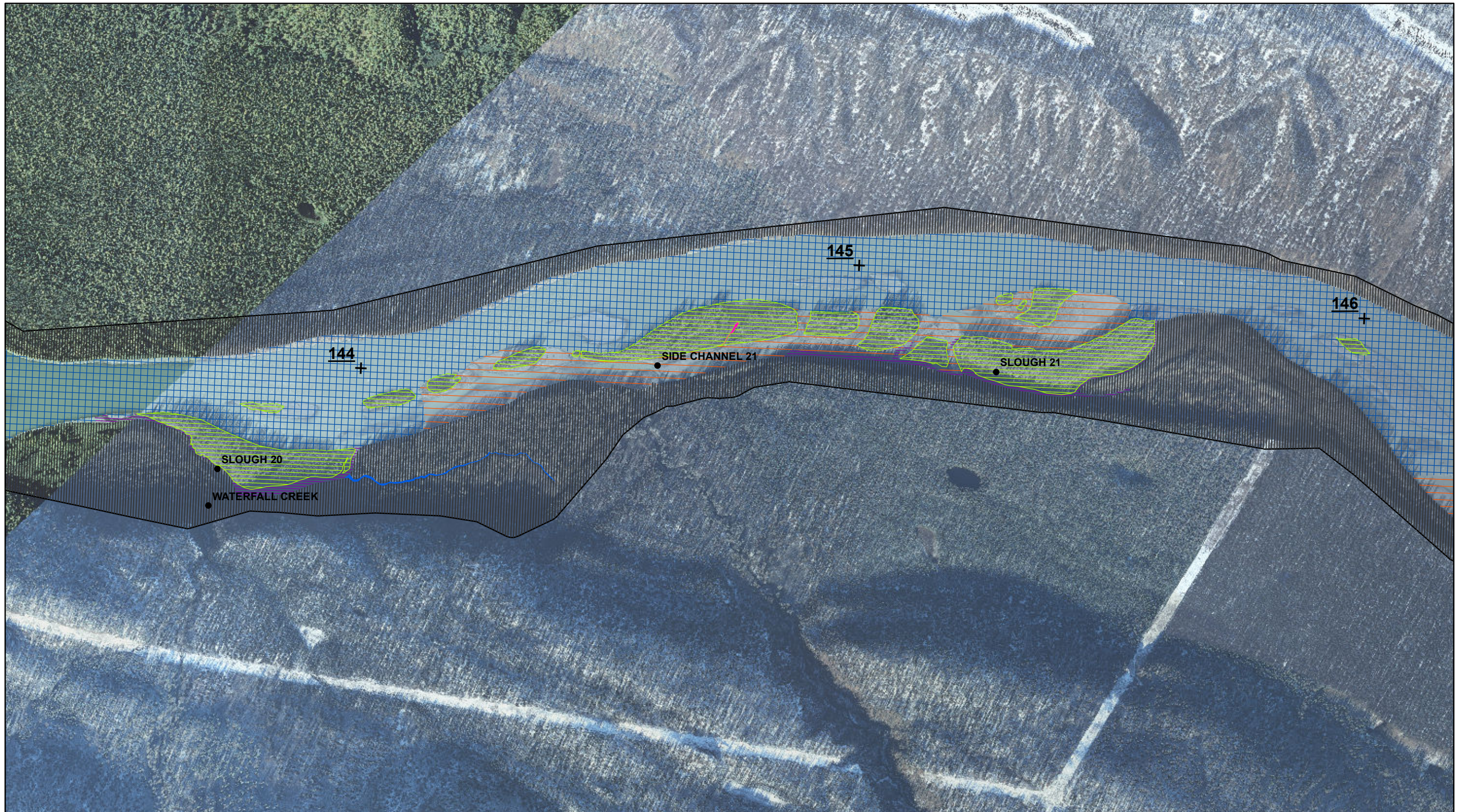
See index page for legend and additional data information.

Sheet 16 of 31

**MIDDLE SUSITNA RIVER SEGMENT
2012 GEOMORPHIC FEATURES**

Location:	Imagery Date:	Discharge (Gold Creek)
PRM 102.4 - 143.6	09/10/2012	12,900 cfs
PRM 143.6 - 187.1	09/30/2012	17,000 cfs





0 1,000 2,000 Feet 1 inch = 1,000 feet

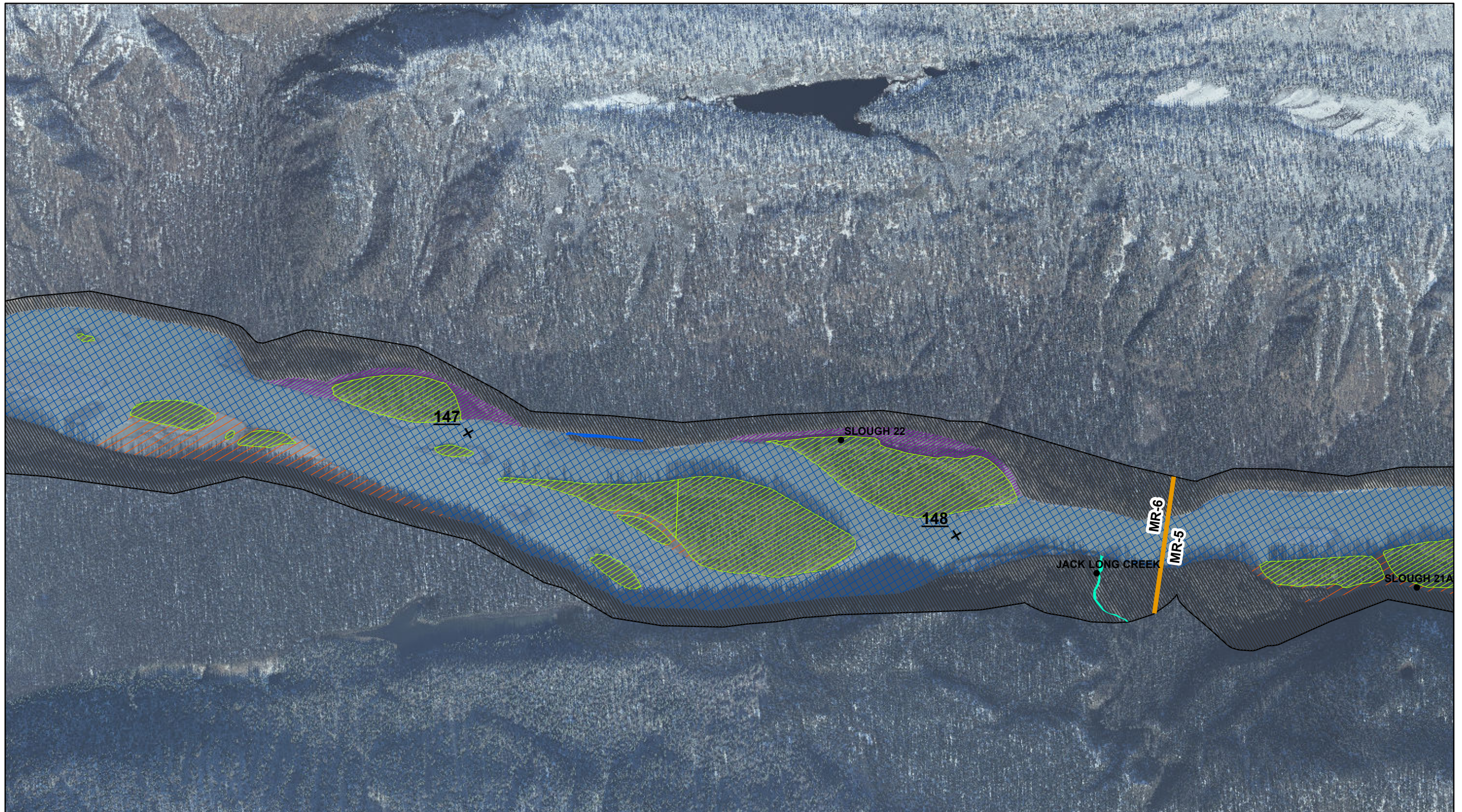
See index page for legend and additional data information.

Sheet 17 of 31

**MIDDLE SUSITNA RIVER SEGMENT
2012 GEOMORPHIC FEATURES**

Location:	Imagery Date:	Discharge (Gold Creek)
PRM 102.4 - 143.6:	09/10/2012,	12,900 cfs
PRM 143.6 - 187.1:	09/30/2012,	17,000 cfs





0 1,000 2,000 Feet 1 inch = 1,000 feet

See index page for legend and additional data information.

Sheet 18 of 31

**MIDDLE SUSITNA RIVER SEGMENT
2012 GEOMORPHIC FEATURES**

Location:	Imagery Date:	Discharge (Gold Creek)
PRM 102.4 - 143.6:	09/10/2012,	12,900 cfs
PRM 143.6 - 187.1:	09/30/2012,	17,000 cfs





0 1,000 2,000 Feet 1 inch = 1,000 feet

See index page for legend and additional data information.

Sheet 19 of 31

**MIDDLE SUSITNA RIVER SEGMENT
2012 GEOMORPHIC FEATURES**

Location:	Imagery Date:	Discharge (Gold Creek)
PRM 102.4 - 143.6:	09/10/2012,	12,900 cfs
PRM 143.6 - 187.1:	09/30/2012,	17,000 cfs





0 1,000 2,000 Feet 1 inch = 1,000 feet

See index page for legend and additional data information.

Sheet 20 of 31

**MIDDLE SUSITNA RIVER SEGMENT
2012 GEOMORPHIC FEATURES**

Location:	Imagery Date:	Discharge (Gold Creek)
PRM 102.4 - 143.6:	09/10/2012,	12,900 cfs
PRM 143.6 - 187.1:	09/30/2012,	17,000 cfs





0 1,000 2,000 Feet 1 inch = 1,000 feet

See index page for legend and additional data information.

Sheet 21 of 31

**MIDDLE SUSITNA RIVER SEGMENT
2012 GEOMORPHIC FEATURES**

Location:	Imagery Date:	Discharge (Gold Creek)
PRM 102.4 - 143.6:	09/10/2012,	12,900 cfs
PRM 143.6 - 187.1:	09/30/2012,	17,000 cfs





0 1,000 2,000 Feet 1 inch = 1,000 feet

See index page for legend and additional data information.

Sheet 22 of 31

**MIDDLE SUSITNA RIVER SEGMENT
2012 GEOMORPHIC FEATURES**

Location:	Imagery Date:	Discharge (Gold Creek)
PRM 102.4 - 143.6:	09/10/2012,	12,900 cfs
PRM 143.6 - 187.1:	09/30/2012,	17,000 cfs





0 1,000 2,000 Feet 1 inch = 1,000 feet

See index page for legend and additional data information.

Sheet 23 of 31

**MIDDLE SUSITNA RIVER SEGMENT
2012 GEOMORPHIC FEATURES**

Location:	Imagery Date:	Discharge (Gold Creek)
PRM 102.4 - 143.6:	09/10/2012,	12,900 cfs
PRM 143.6 - 187.1:	09/30/2012,	17,000 cfs





0 1,000 2,000 Feet 1 inch = 1,000 feet

See index page for legend and additional data information.

Sheet 24 of 31

**MIDDLE SUSITNA RIVER SEGMENT
2012 GEOMORPHIC FEATURES**

Location:	Imagery Date:	Discharge (Gold Creek)
PRM 102.4 - 143.6:	09/10/2012,	12,900 cfs
PRM 143.6 - 187.1:	09/30/2012,	17,000 cfs





0 1,000 2,000 Feet 1 inch = 1,000 feet

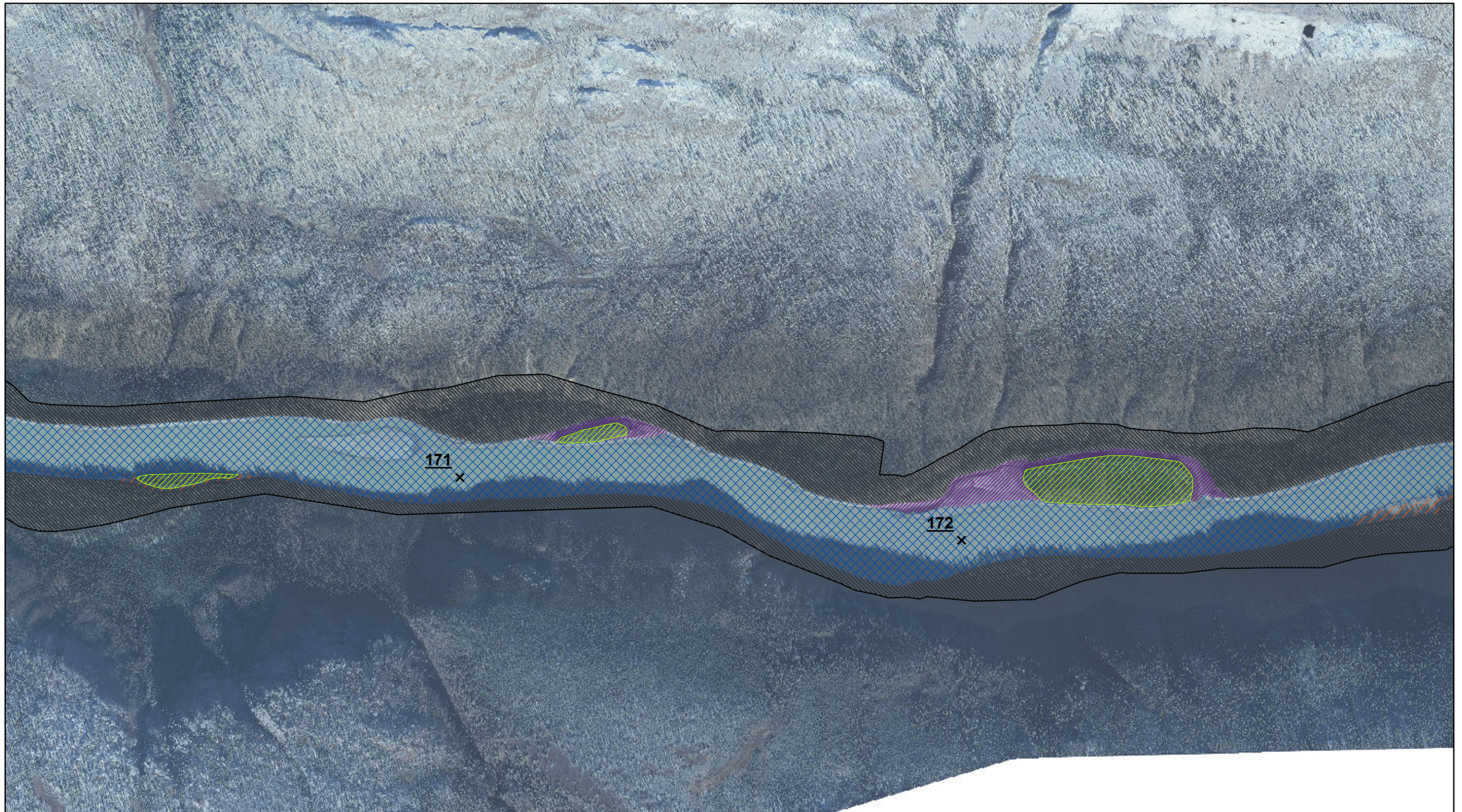
See index page for legend and additional data information.

Sheet 25 of 31

**MIDDLE SUSITNA RIVER SEGMENT
2012 GEOMORPHIC FEATURES**

Location:	Imagery Date:	Discharge (Gold Creek)
PRM 102.4 - 143.6:	09/10/2012,	12,900 cfs
PRM 143.6 - 187.1:	09/30/2012,	17,000 cfs





0 1,000 2,000 Feet 1 inch = 1,000 feet

See index page for legend and additional data information.

Sheet 26 of 31

**MIDDLE SUSITNA RIVER SEGMENT
2012 GEOMORPHIC FEATURES**

Location:	Imagery Date:	Discharge (Gold Creek)
PRM 102.4 - 143.6:	09/10/2012,	12,900 cfs
PRM 143.6 - 187.1:	09/30/2012,	17,000 cfs







0 1,000 2,000 Feet 1 inch = 1,000 feet

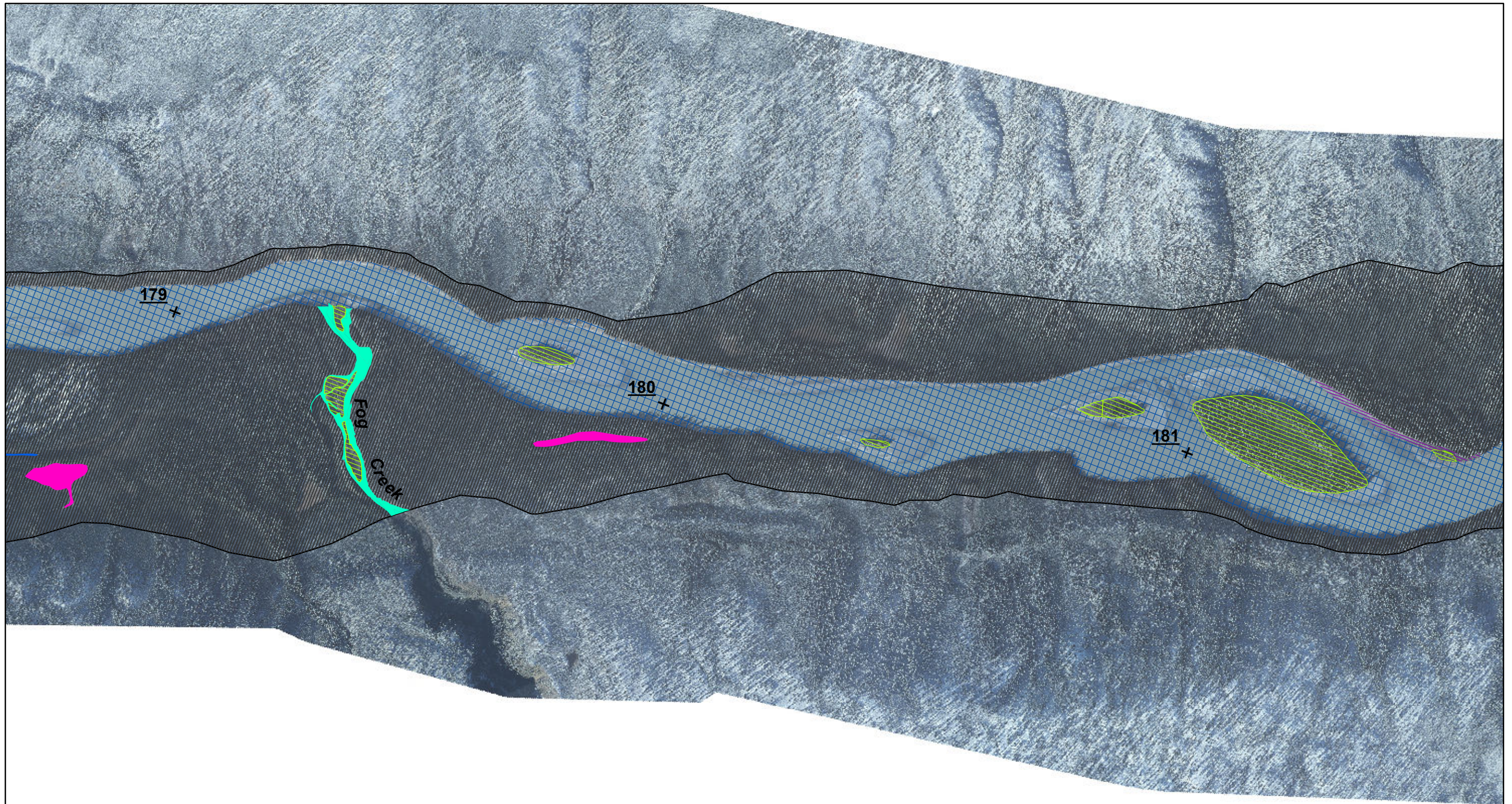
See index page for legend and additional data information.

Sheet 28 of 31

**MIDDLE SUSITNA RIVER SEGMENT
2012 GEOMORPHIC FEATURES**

Location:	Imagery Date:	Discharge (Gold Creek)
PRM 102.4 - 143.6:	09/10/2012,	12,900 cfs
PRM 143.6 - 187.1:	09/30/2012,	17,000 cfs





0 1,000 2,000 Feet 1 inch = 1,000 feet

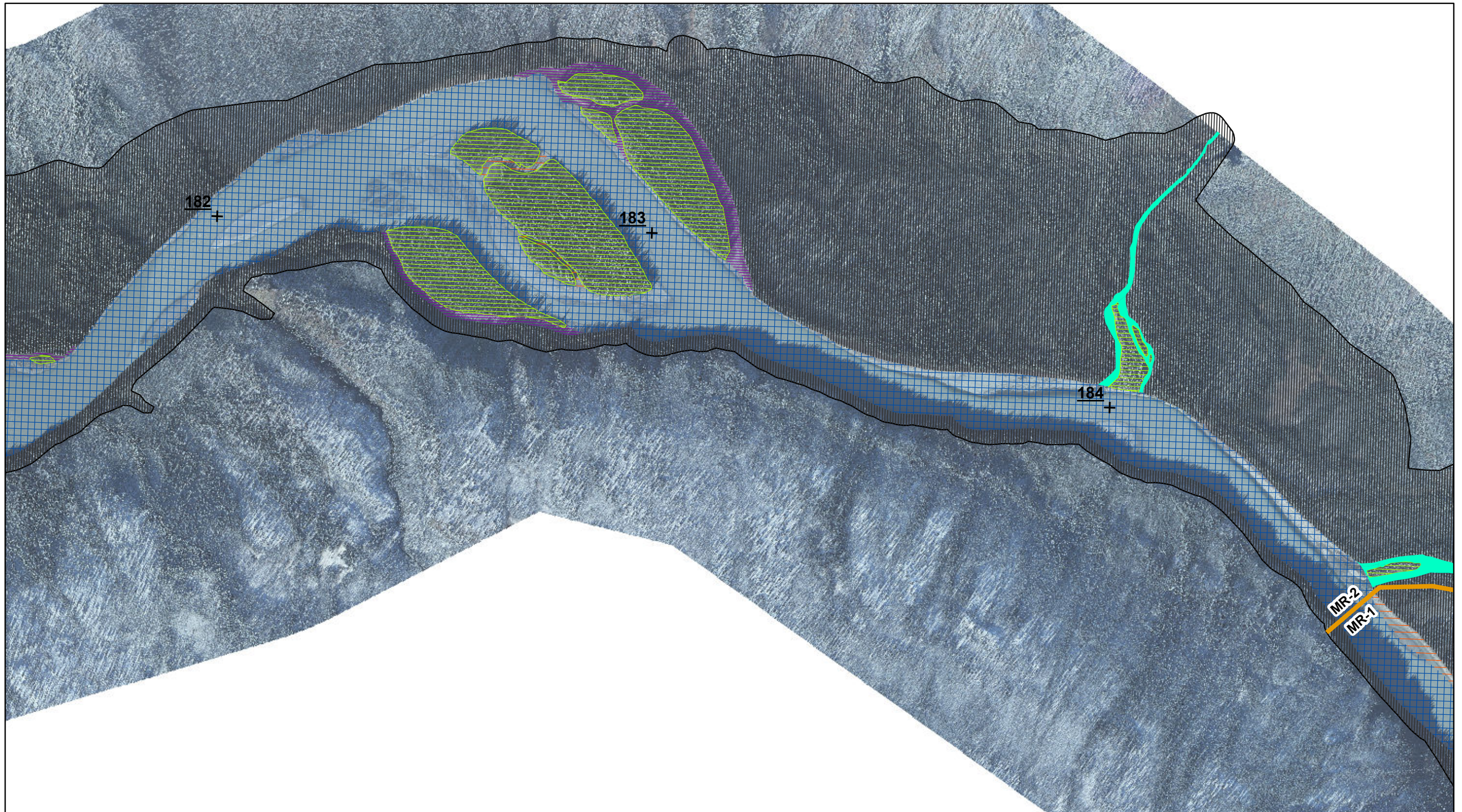
See index page for legend and additional data information.

Sheet 29 of 31

**MIDDLE SUSITNA RIVER SEGMENT
2012 GEOMORPHIC FEATURES**

Location:	Imagery Date:	Discharge (Gold Creek)
PRM 102.4 - 143.6:	09/10/2012,	12,900 cfs
PRM 143.6 - 187.1:	09/30/2012,	17,000 cfs





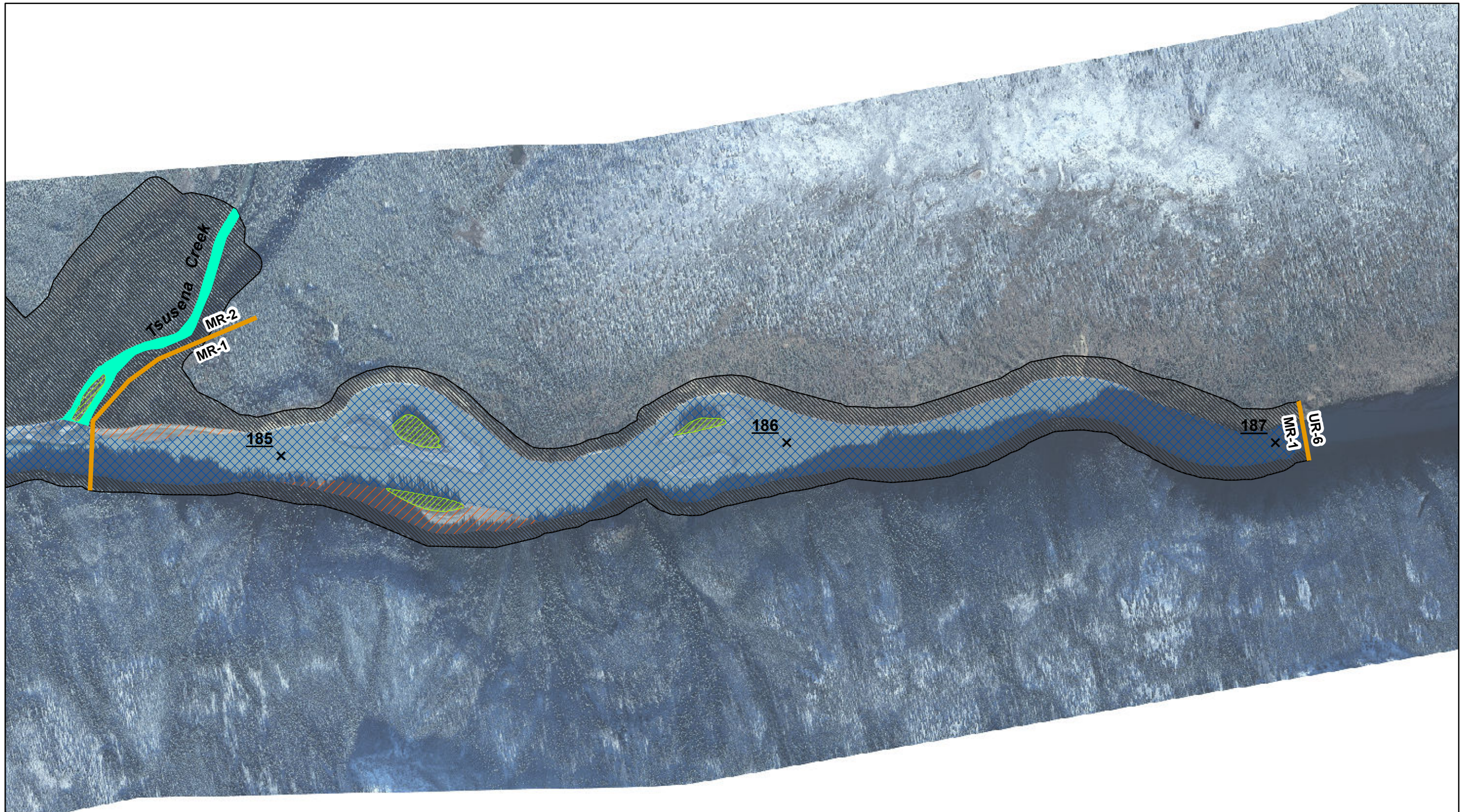
0 1,000 2,000 Feet 1 inch = 1,000 feet
 See index page for legend and additional data information.

Sheet 30 of 31

**MIDDLE SUSITNA RIVER SEGMENT
 2012 GEOMORPHIC FEATURES**

Location:	Imagery Date:	Discharge (Gold Creek)
PRM 102.4 - 143.6:	09/10/2012,	12,900 cfs
PRM 143.6 - 187.1:	09/30/2012,	17,000 cfs





0 1,000 2,000 Feet 1 inch = 1,000 feet

See index page for legend and additional data information.

Sheet 31 of 31

**MIDDLE SUSITNA RIVER SEGMENT
2012 GEOMORPHIC FEATURES**

Location:	Imagery Date:	Discharge (Gold Creek)
PRM 102.4 - 143.6:	09/10/2012,	12,900 cfs
PRM 143.6 - 187.1:	09/30/2012,	17,000 cfs

