

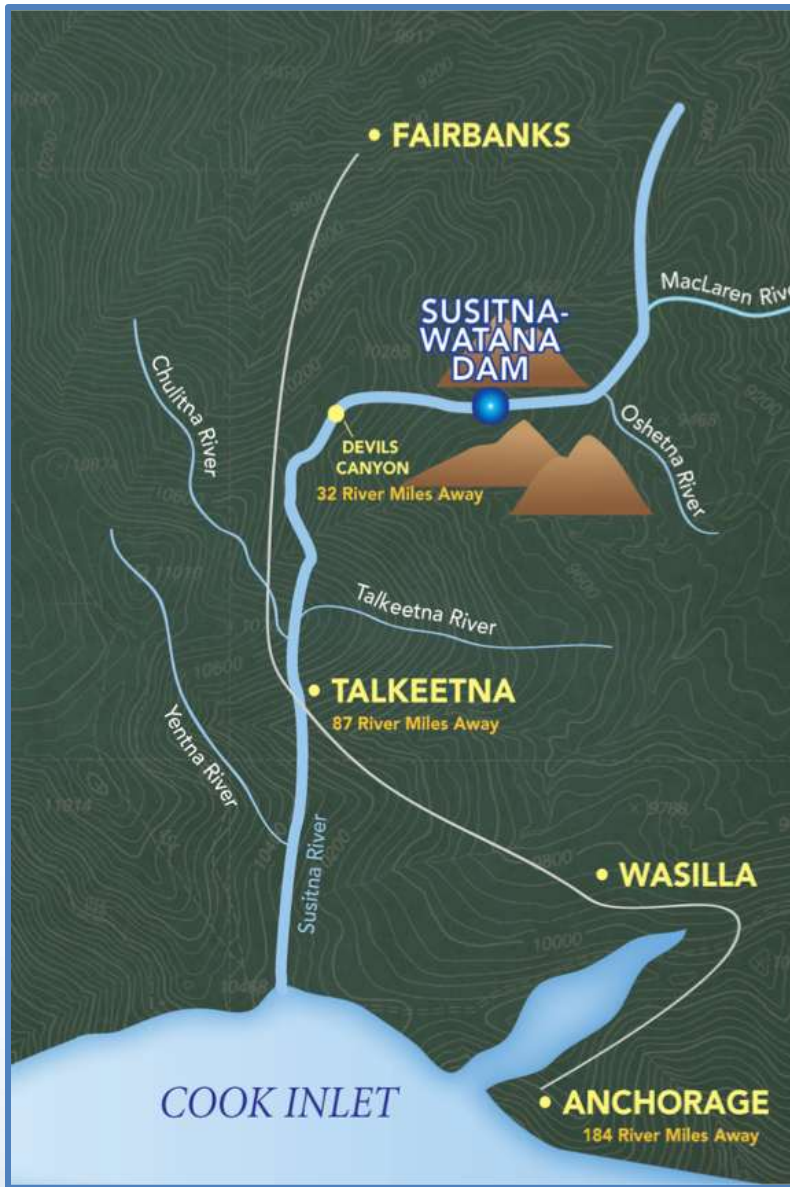
Technical WorkGroup Meeting

Fish and Aquatics Instream Flow

Flow Routing Model 2012 Data Collection

7-8, 14-15 Feb 2013

Prepared by **GW Scientific**



Technical Memo Appendix Overview

2

- GPS Control Network
- Cross-Section Surveys
- Discharge Measurements
- Water Level Measurements
- Slope, Roughness, Vegetation Data



Technical Memo Appendix Overview

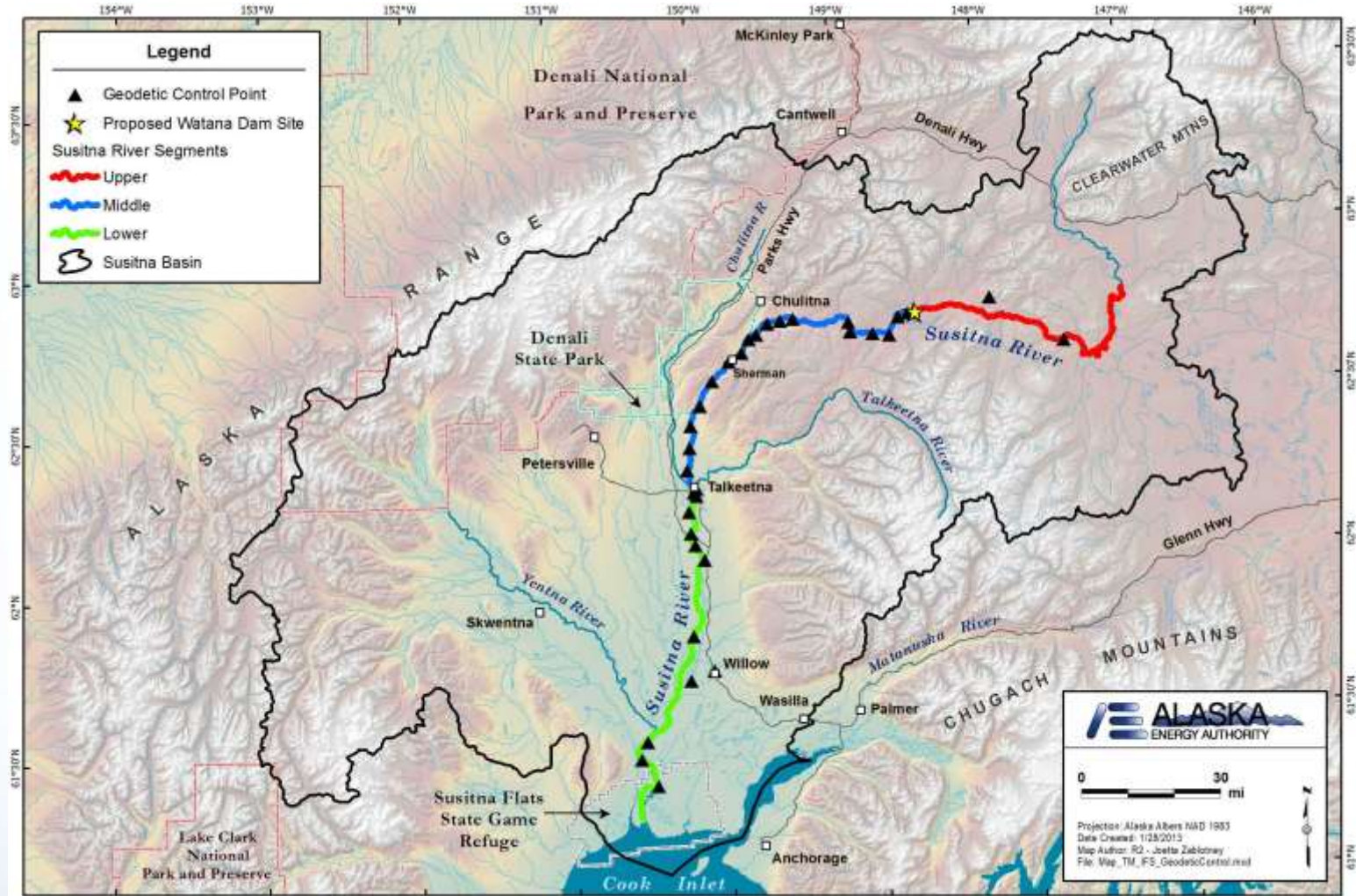
3

- PRM 187.2 to PRM 80.0
- 88 Transect Profiles
- 9 Gaging Stations in Model Reaches
- 4 Gaging Stations in Other Locations
- 214 Discharge Measurements



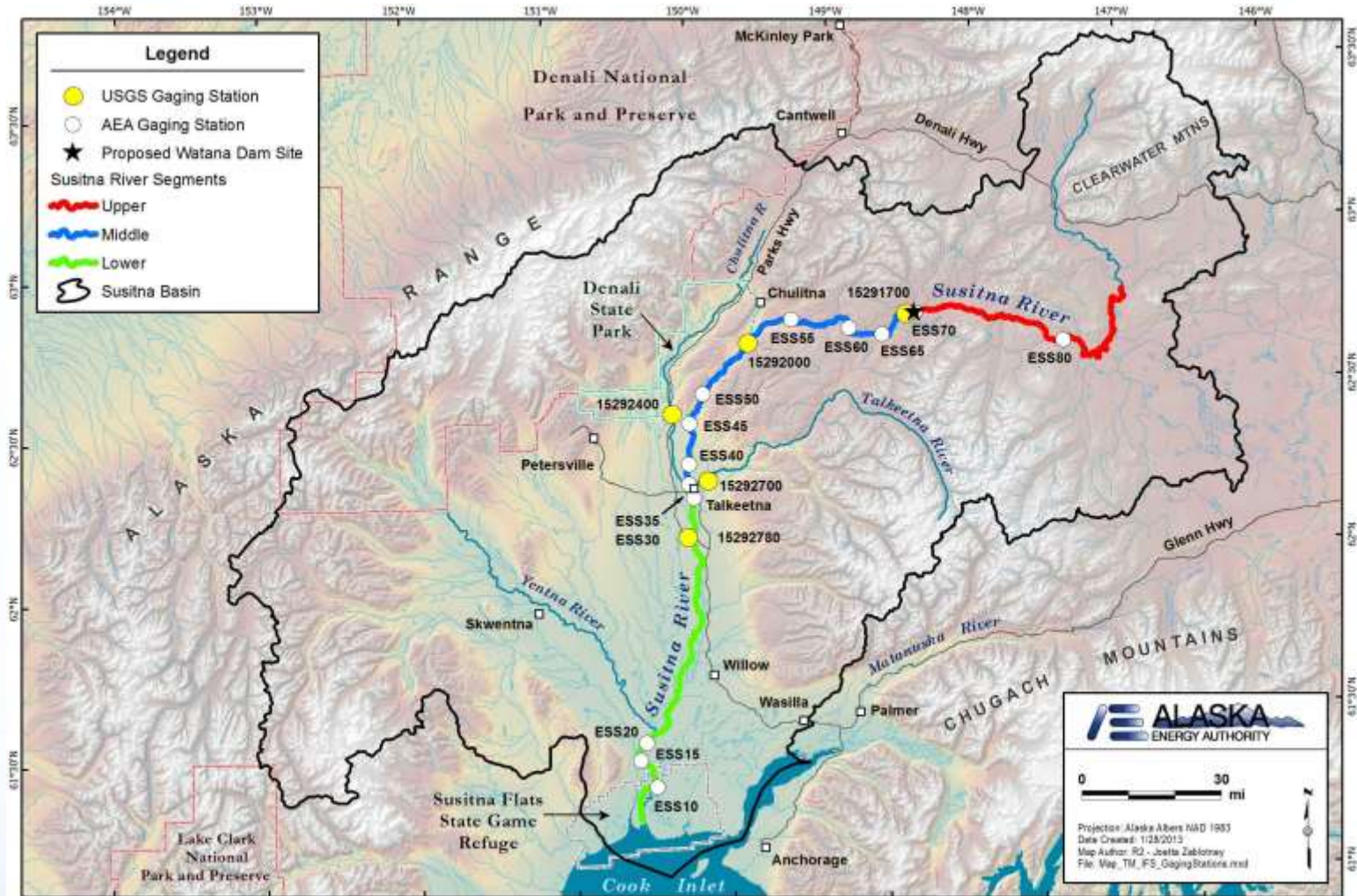
GPS Control Network

4

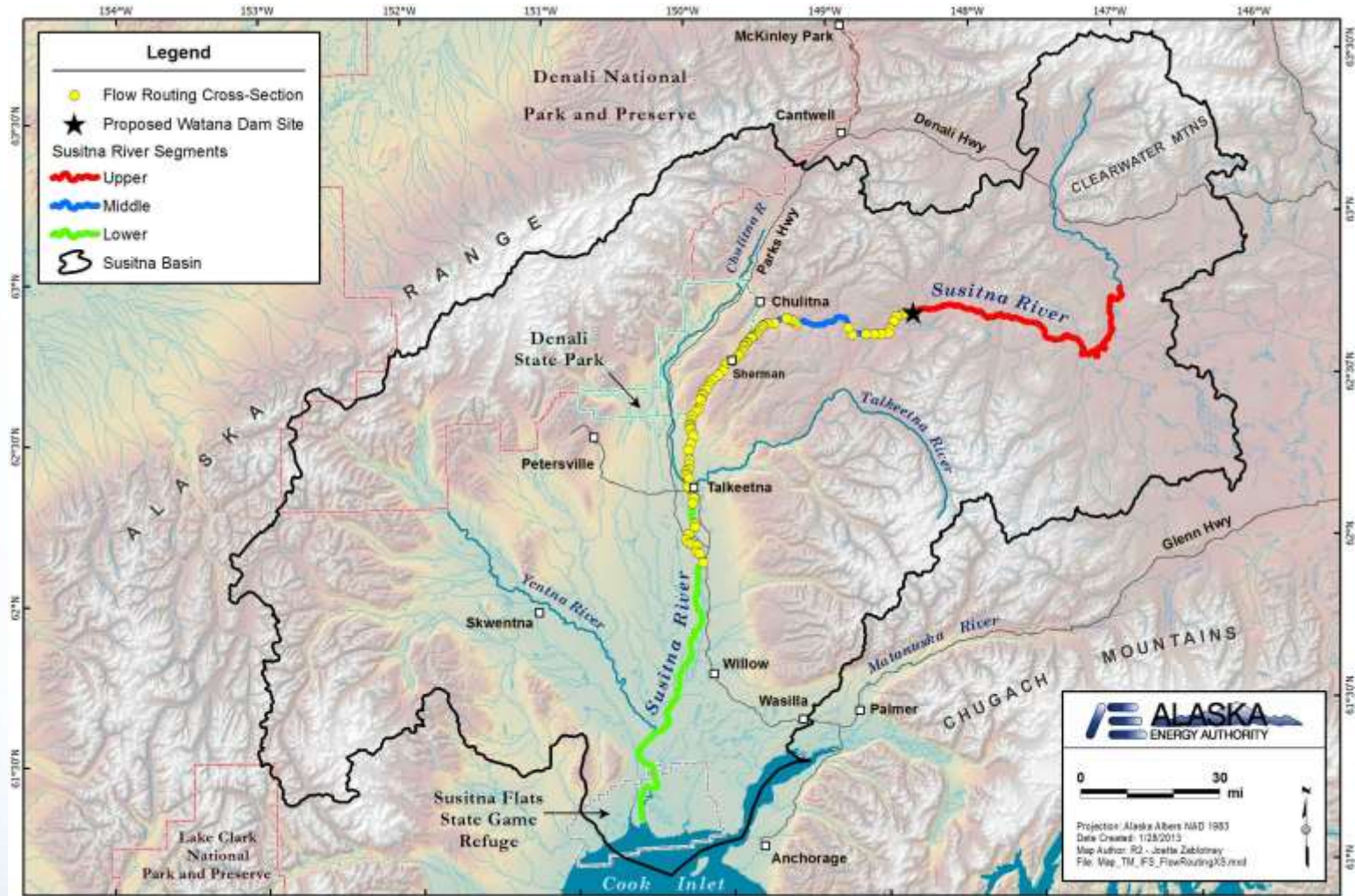


SUSITNA-WATANA HYDRO *Clean, reliable energy for the next 100 years.*

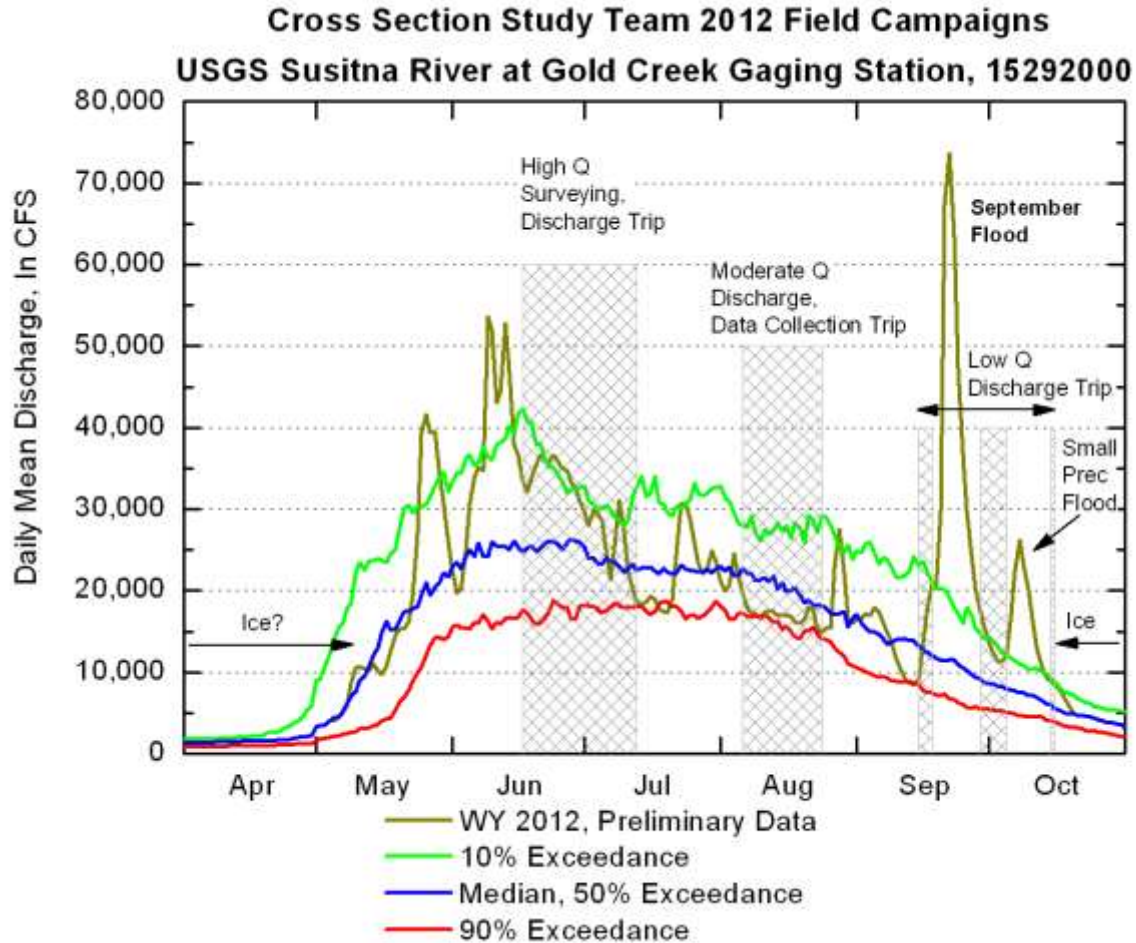
Gaging Stations



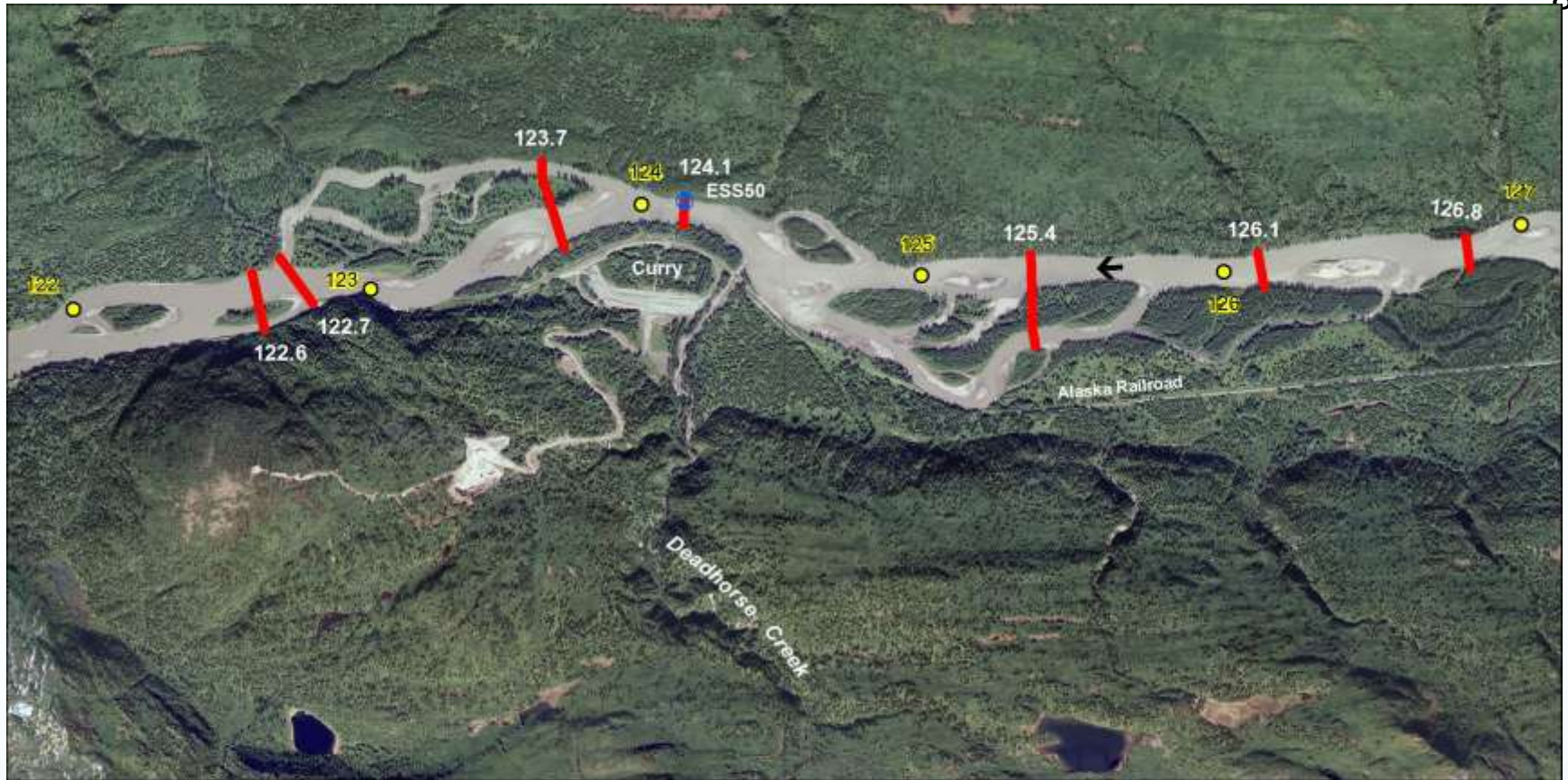
Cross Sections



2012 Field Season



Example Cross Sections



Legend

- █ Flow Routing Cross-Section
- ⊕ AEA Gaging Station
- ⊕ USGS Gaging Station
- ▲ Geodetic Control Point
- ← Flow Arrow
- Project River Mile



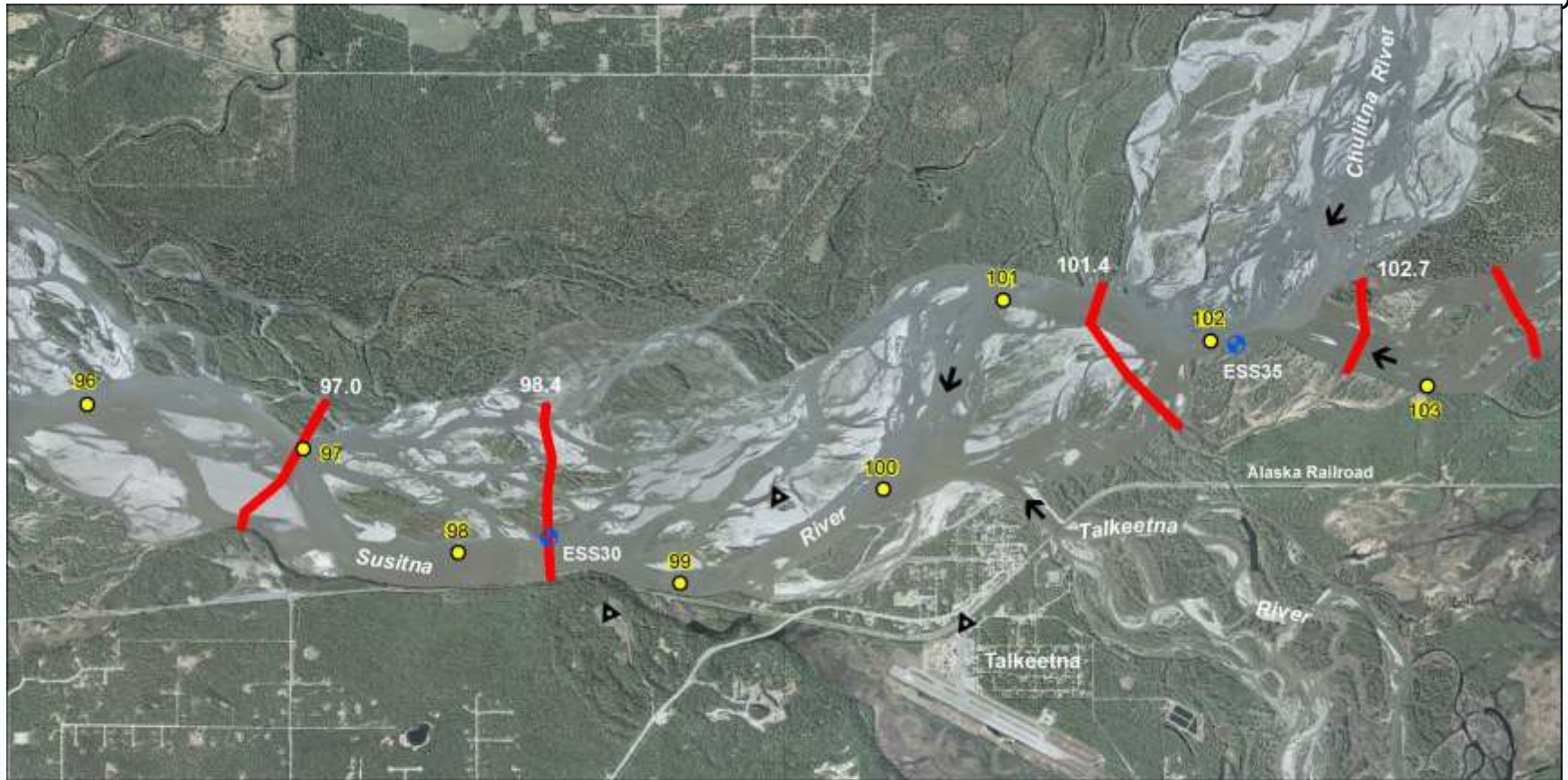
Projection: Alaska Albers NAD 1983
 Date Created: 1/28/2013
 Map Author: R2 - Joetta Zablotney
 File: Map_TM_IFS_FlowRoutingXS_MR.mxd



Map Key

S Orthophoto Source: 2011 Matanuska-Susitna Borough LIDAR & Imagery Project

Example Cross Sections



Legend

- Flow Routing Cross-Section
- AEA Gaging Station
- USGS Gaging Station
- ▲ Geodetic Control Point
- ← Flow Arrow
- Project River Mile

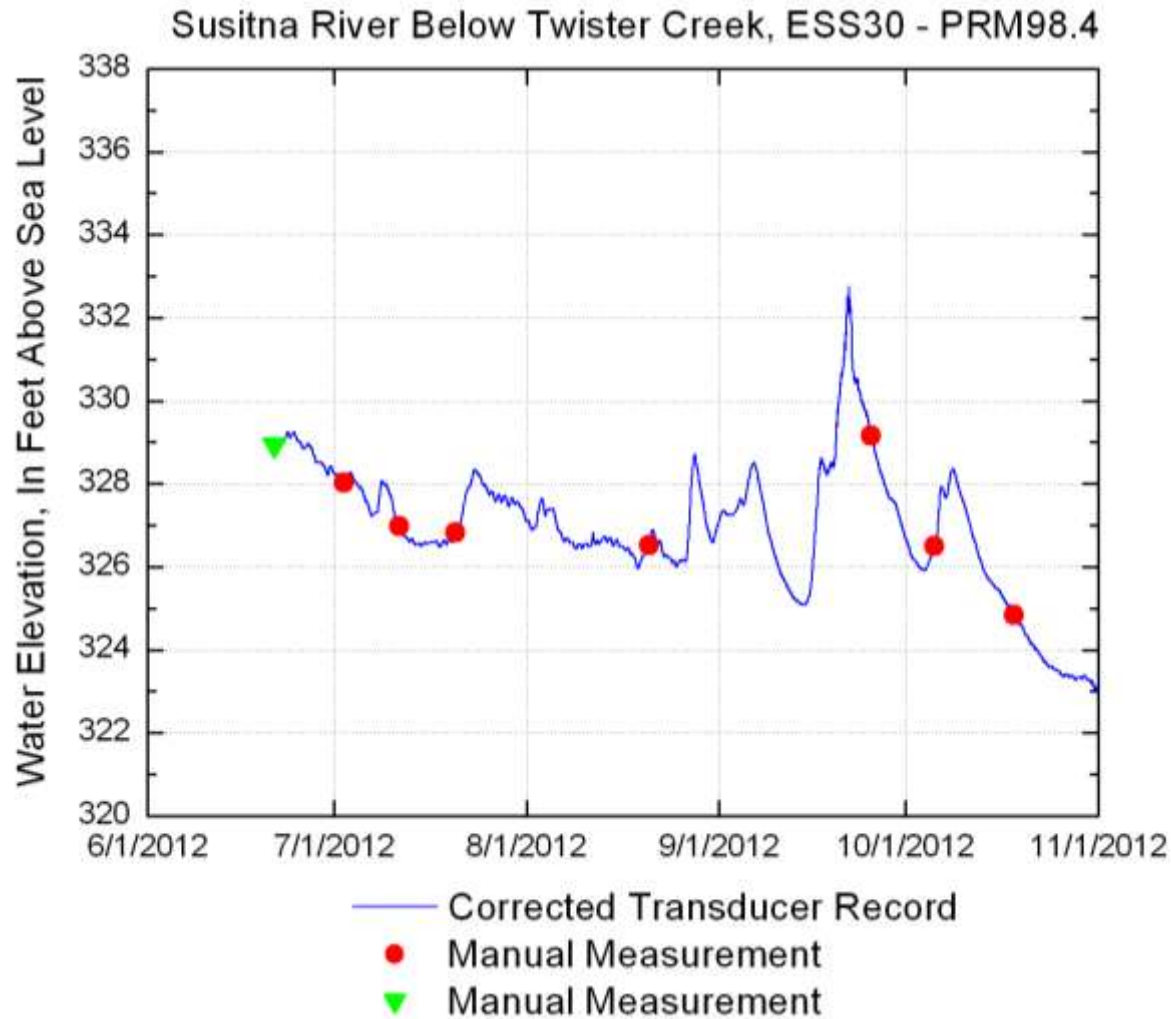


Projection: Alaska Albers NAD 1983
 Date Created: 1/28/2013
 Map Author: R2 - Joetta Zabolotney
 File: Map_TM_IFS_FlowRoutingXS_LR.mxd



Orthophoto Source: 2011 Matanuska-Susitna Borough LIDAR & Imagery Project

Gaging Stations – Water Levels



Gaging Stations – Water Levels

