

# SUSITNA-WATANA HYDROELECTRIC PROJECT

## Formal ILP Revised Study Plan Review

October 17, 2012

Prepared by HDR Alaska



# Subsistence Proposed Studies

- Subsistence Baseline Documentation Study

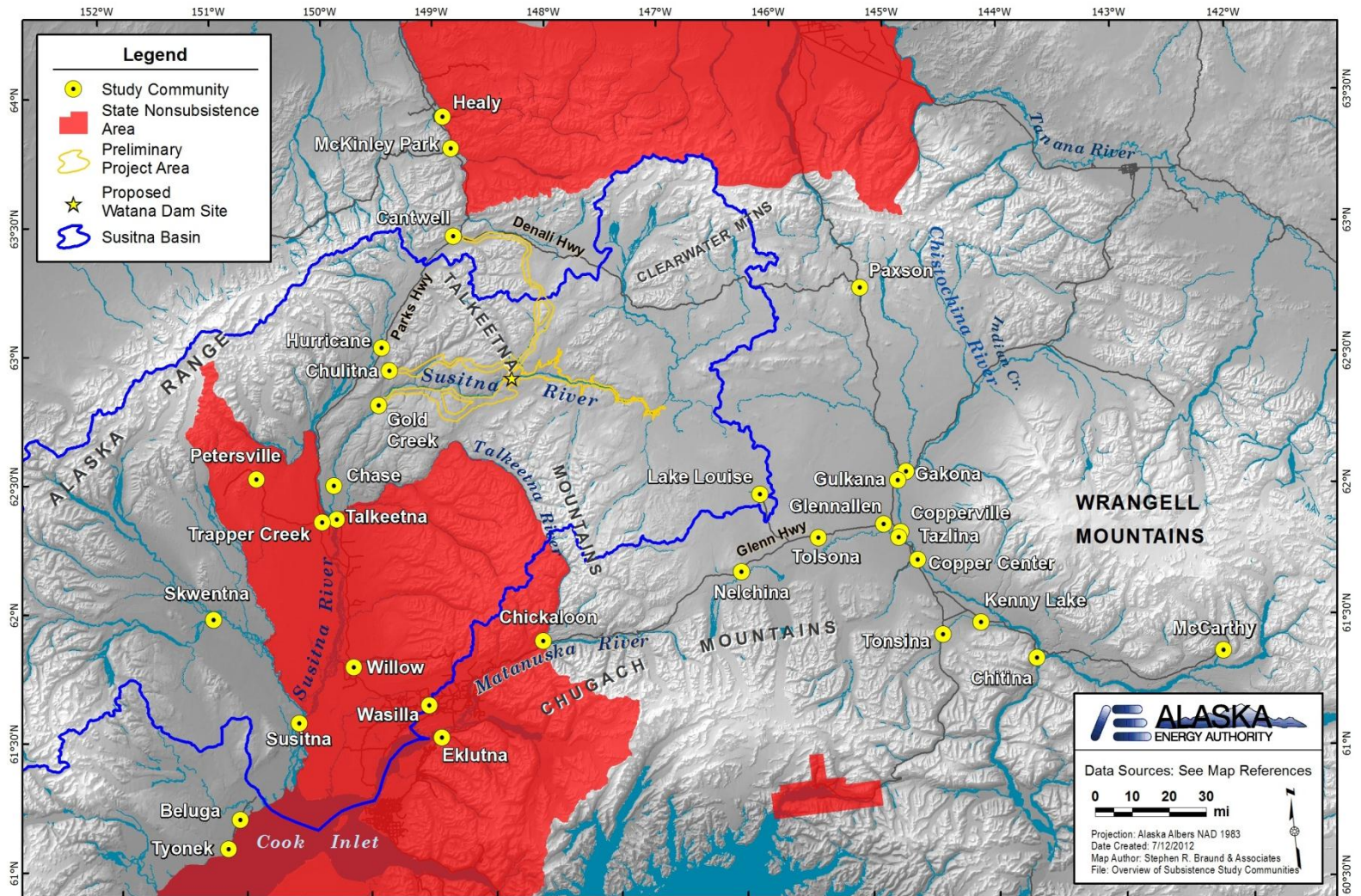


# Subsistence Goals and Objectives

- Document communities' subsistence use areas within or near the Project area
- Document communities' use of Project area to access other lands and waters used for subsistence
- Document communities' use of resources that migrate through the Project area and harvested in other areas.
- Collect and document traditional and local knowledge
- Evaluate Project plans to identify sources of potential impacts on identified subsistence uses
- Provide necessary information to support ANILCA 810



# Subsistence Study Area



# Subsistence Resources Study

- Compilation of Existing Subsistence Data
- ADFG Household Harvest Surveys, 2013-2014
- 10-Year Mapping Interviews, 2014
- Traditional and Local Knowledge Interviews, 2013
- Annual Study Reporting and Impact Analysis

## ADFG Survey Communities

### 2013

Cantwell

Chase

Skwentna

Susitna

Talkeetna

Trapper Creek

### 2014

Copperville/Tazlina

Gulkana

Nelchina

Lake Louise

Paxson

Tolsona

Tonsina

Glennallen

## TLK Interview Communities

Cantwell

Chickaloon

Chitina

Copper Center

Eklutna

Gakona

Gulkana

Tyonek

# Subsistence Expected Results

- Summary of Existing Subsistence Data
- ADF&G Technical Papers for Harvest Surveys
- Subsistence Use Area and Traditional Knowledge Report
  - Data from traditional knowledge interviews will be available to other resources (see next slide)
- Impact Analysis
  - Will incorporate above data (e.g., harvest amounts, user access, subsistence use areas) and traditional knowledge to inform impact analyses
  - Will also incorporate impact analyses from other resources (see next slide)



# Comments On PSP

Revised Study Plan – Interim Draft

**Table 14.4-1. Summary of consultation on Subsistence Resources study plans.**

Comment Format	Comment Date	Licensing Participant Name	Licensing Participant Affiliation	Comment	Response
Subsistence Baseline Documentation Study (Section 14.5)					
TWG Mtg	8/8/2012	David Turner	FERC	Provide a survey instrument for the household surveys	Study plan has been updated to include survey instrument. The draft household harvest survey instrument is provided in Attachment 14-2 and key informant interview protocol in Attachment 14-3.
Letter	9/14/2012	Lisa Wade	Chickaloon Village Traditional Council, Health and Social Services Dept	Comments were in reference to the HIA specifically but noted: "traditional knowledge should be gathered through qualitative discussions with Tribal communities to contribute to the completion of the HIA..."can't stress enough the importance of traditional knowledge . . ."	Traditional Knowledge (TK) interviews will be conducted in Chickaloon during the first half of 2013. Section 14.5.4.5 and Table 14.5---3 present TK interview methods and communities slated to be interviewed including Chickaloon. Results will be shared with HIA study team as soon as they are available so that traditional knowledge can be incorporated into the HIA study process and analysis. Additionally, TK questions related to the HIA will be incorporated into the TK interview guide for use in all TK interviews.



# Changes To RSP

## Inclusion of Survey Instruments

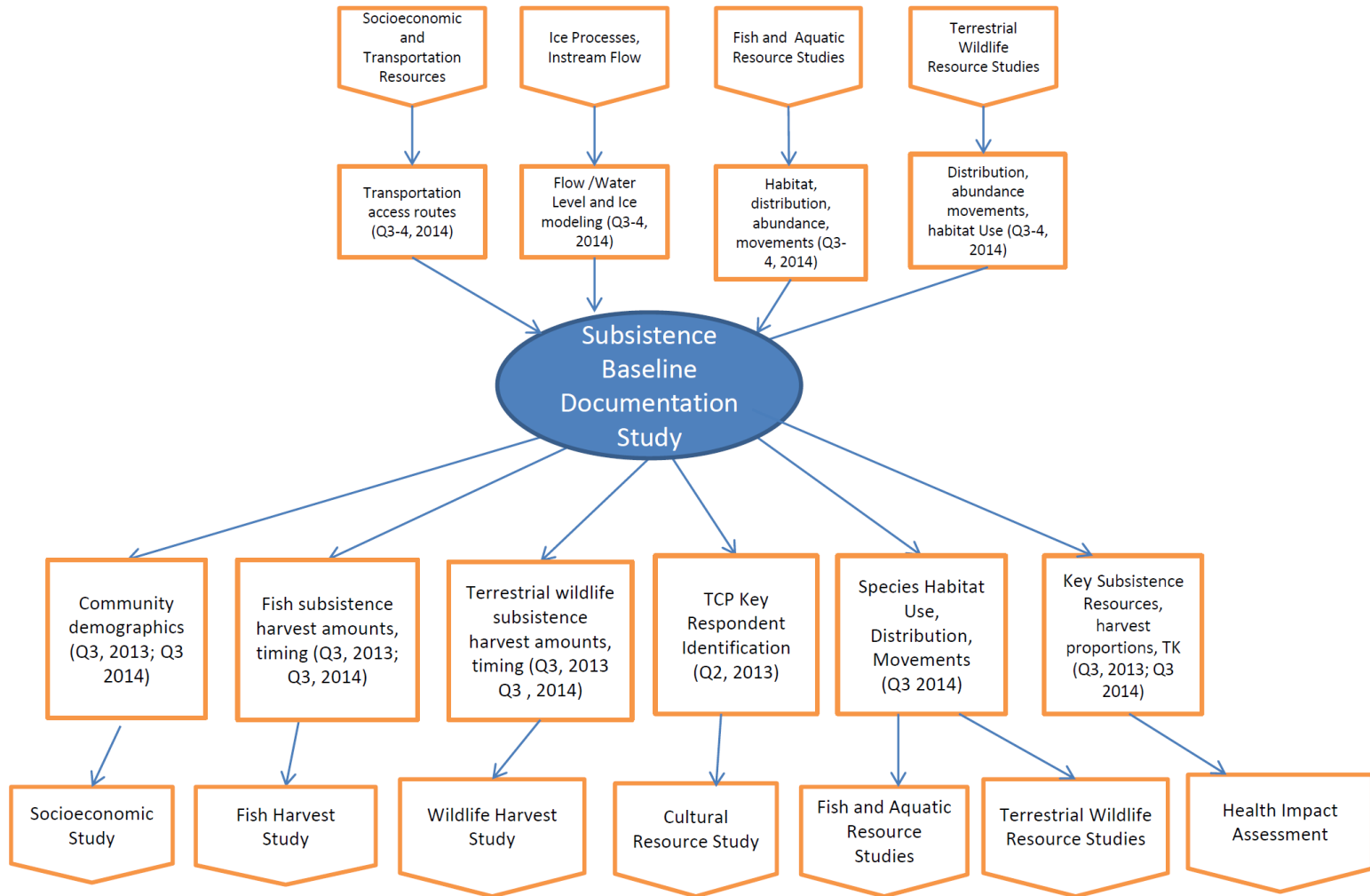
- Household Harvest Survey Instrument (ADFG)
- Key Respondent Interview Protocol (ADFG)
- 10-Year Mapping Interview Protocol
- Traditional and Local Knowledge Interview Protocol

## Inclusion of Interdependency Table





# STUDY INTERDEPENDENCIES FOR SUBSISTENCE BASELINE DOCUMENTATION STUDY



# Subsistence Discussion/Questions

- Questions or Concerns about Subsistence Study?