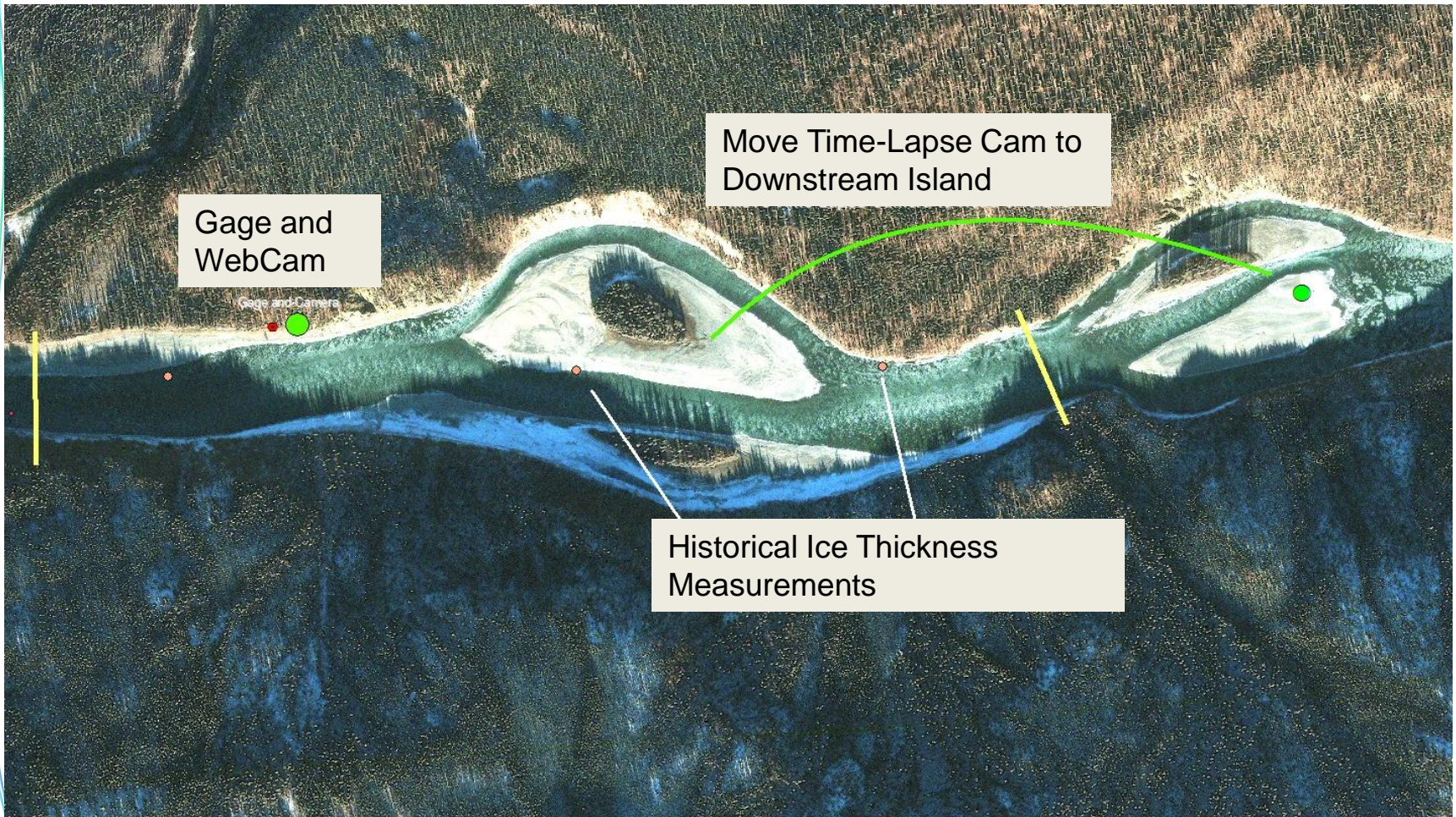


Watana Dam Site Winter Conditions

1

Site currently freezes in winter, but would remain open under project conditions.



Watana Dam Site Winter Conditions



Slough 21 Winter Conditions



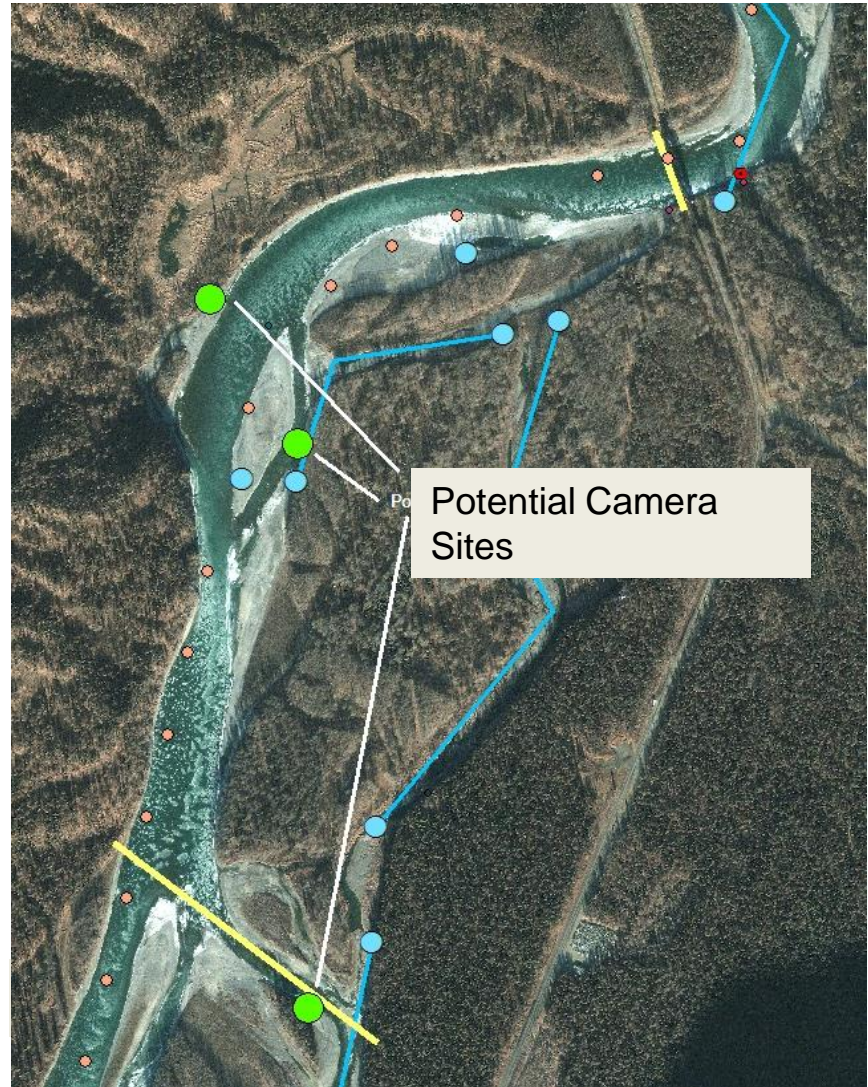
Slough 21 Winter Conditions

- Observations include open sloughs, channel-forming ice jams.
- 1980's simulations predicted this reach would be open or near leading edge of ice cover under project operations
- Ice jams would be much less severe, if there were enough ice to form one.
- Main channel stages could be lower without the ice cover.



Slough 11 Winter Conditions

- Gold Creek was the location of numerous ice observations and measurements during the 1980's. Currently a gage and camera on the bridge.
- 1980's simulations predicted this reach to freeze during cold winters and remain open during warm winters.
- Potential to backflood or breach slough head during cold years with high winter stages. Without ice, winter stages could be lower in mainstem.



Slough 11 Winter Conditions



Slough 8A Winter Conditions

- Breakup jams reported in 1985 with flooding of Slough 8A.
- 1980's simulations predicted that this reach would be at the leading edge during average years, frozen during cold years, and open during warm years under project conditions.
- Potential for backflooding slough or breaching entrance with high winter stages during colder years.

