

SUSITNA-WATANA HYDROELECTRIC PROJECT

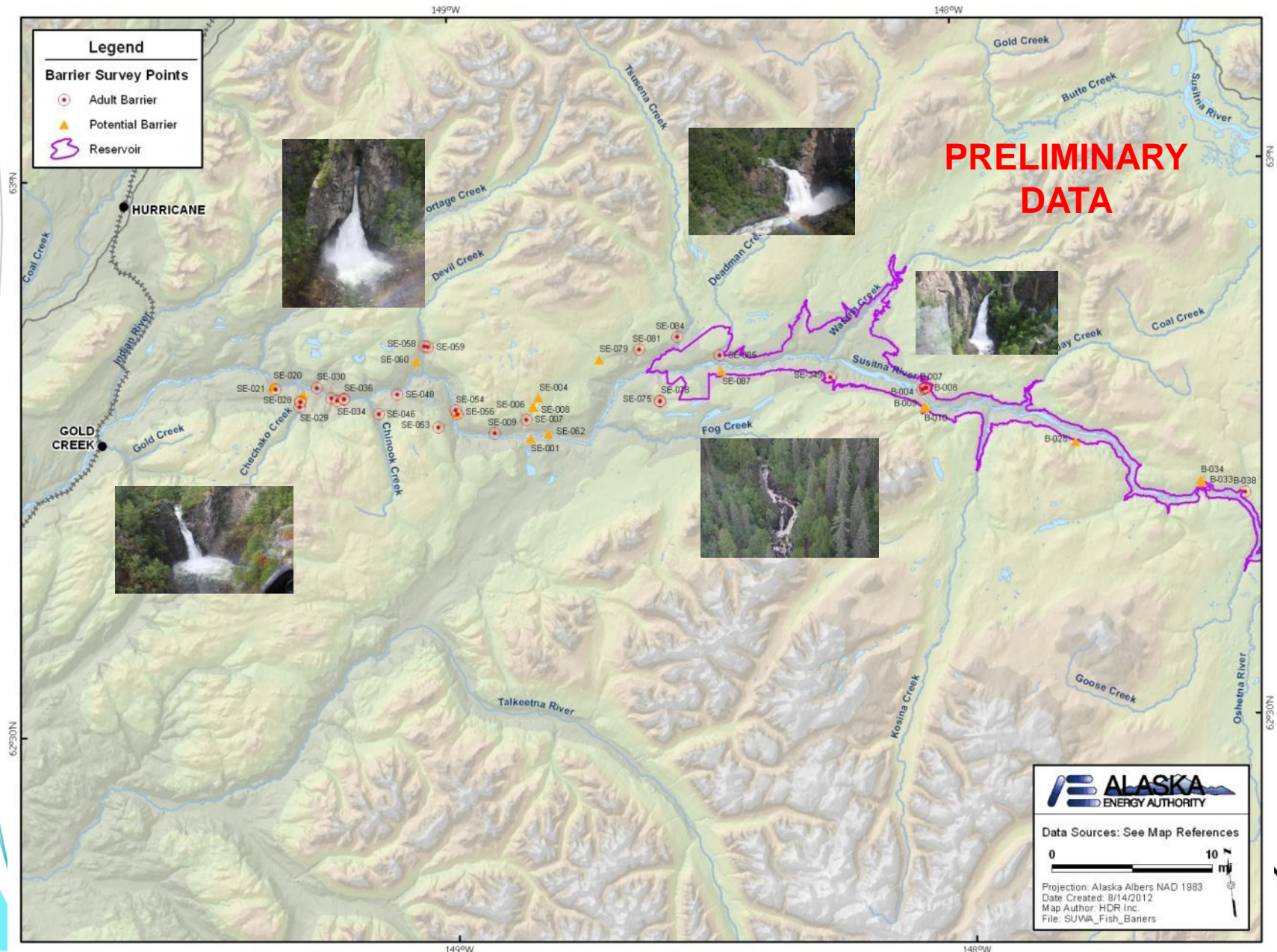
Upper Susitna Fish Distribution and Habitat Study 2012

August 15, 2012

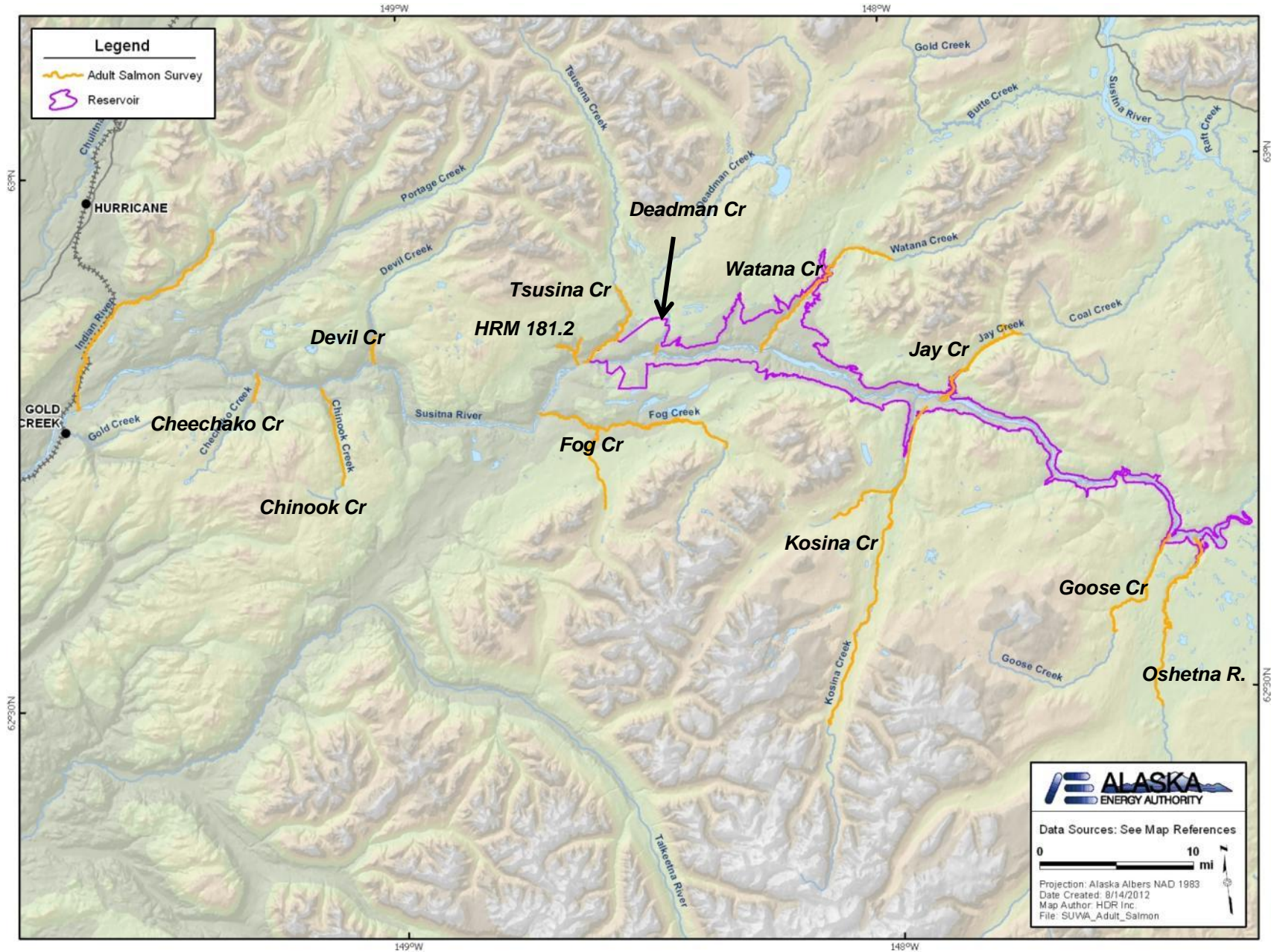
Prepared by HDR



Upper Susitna Passage Barriers



2012 - Salmon Aerial Survey Streams



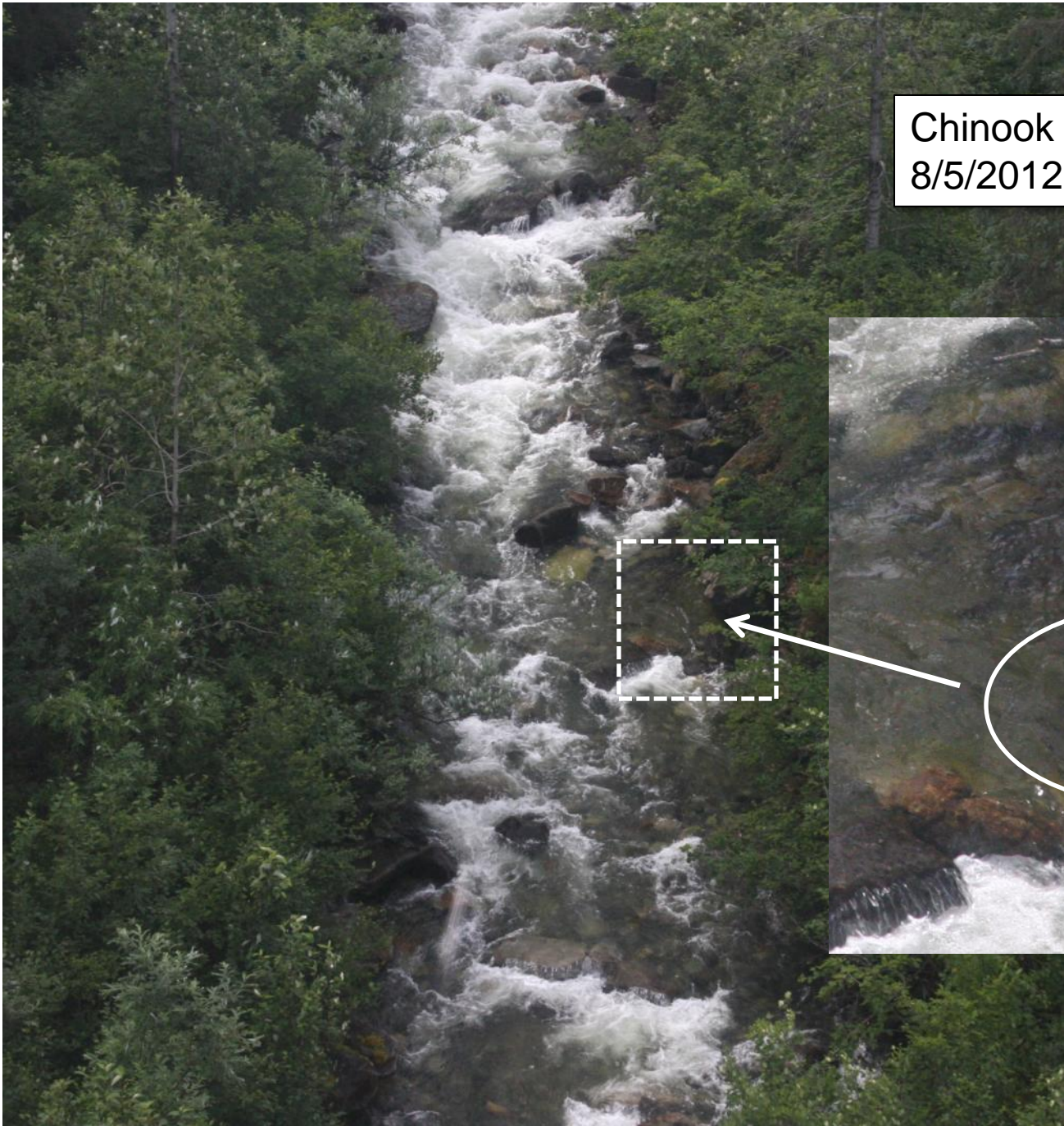
2012 Chinook Salmon Aerial Surveys

PRELIMINARY

Stream	HRM	7/24-7/25	7/30-7/32	8/5-8/6	8/10-8/11
Cheechako Cr.	152.4	0	5	0	2
Chinook Cr.	157.0	0	2	4	0
Devil Creek	161.4	2	6	7	1
Fog Cr.	176.6	0	1	0	0
HRM 181.2	181.2	0	0	0	0
Tsusena Cr	181.8	0	0	0	0
Deadman Cr.	186.6	0	0	0	0
Watana Cr.	194.1	0	0	0	0
Kosina Cr.	206.8	15	8	16	14
Jay Cr.	208.6	0	0	0	0
Goose Cr.	231.0	0	0	0	0
Oshetna R.	233.5	0	0	0	0



Chinook Creek
8/5/2012



Devil Creek
8/5/2012



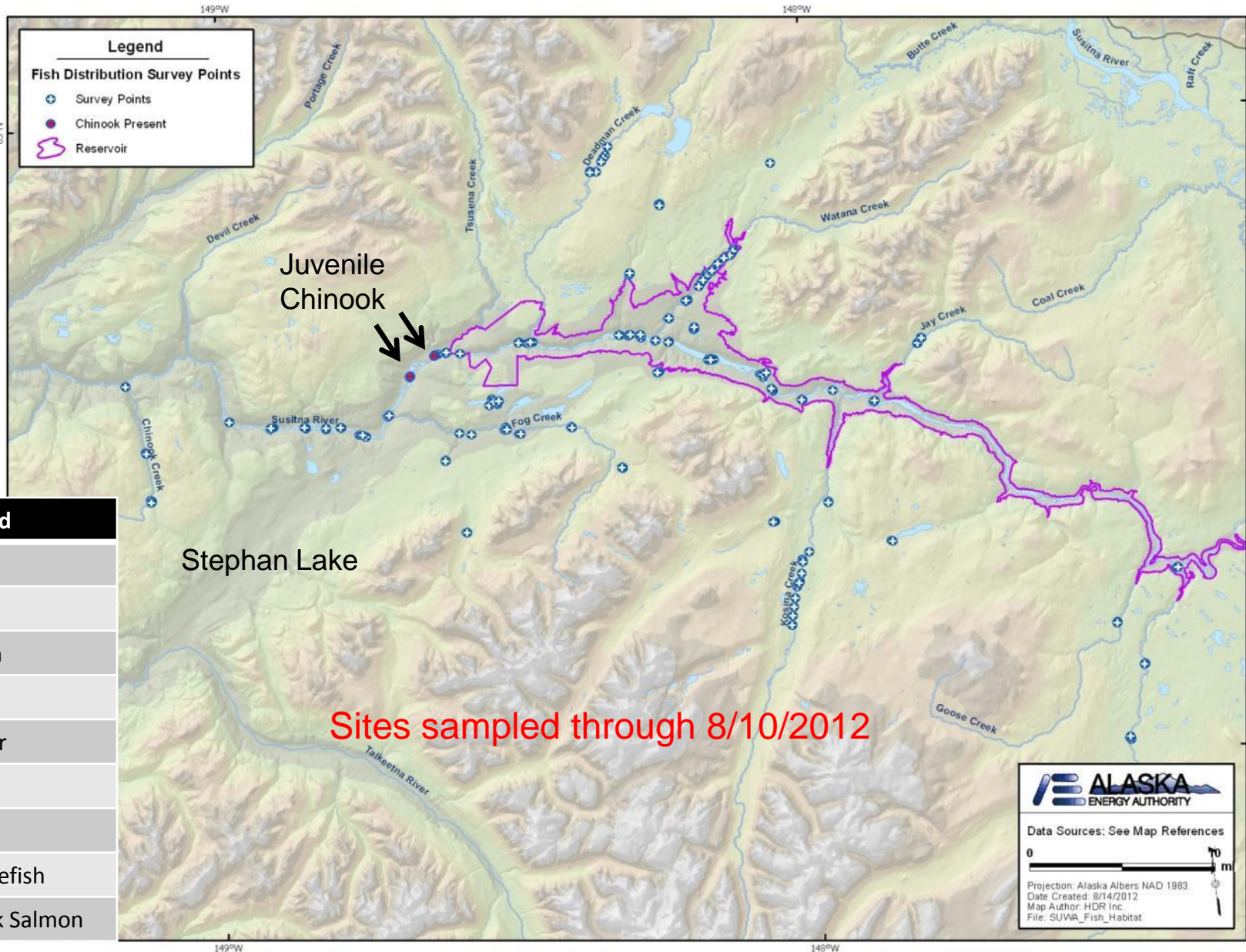


Kosina Creek
7/25/2012

Kosina Creek
7/25/2012



2012 Fish Distribution Sampling



Legend

- + Survey Points
- Chinook Present
- Reservoir

Juvenile Chinook

Stephan Lake

Sites sampled through 8/10/2012

Species Captured
Arctic grayling
Slimy sculpin
Round Whitefish
Dolly Varden
Long nose sucker
Burbot
Lake Trout
Humpback Whitefish
Juvenile Chinook Salmon

ALASKA ENERGY AUTHORITY

Data Sources: See Map References

0 70 m

Projection: Alaska Albers NAD 1983
 Date Created: 8/14/2012
 Map Author: HDR Inc
 File: SUWA_Fish_Habitat