

SUSITNA-WATANA HYDROELECTRIC PROJECT

Formal ILP Proposed Study Plan Review

August 8, 2012

Prepared by Stephen R. Braund & Associates



Subsistence Proposed Studies

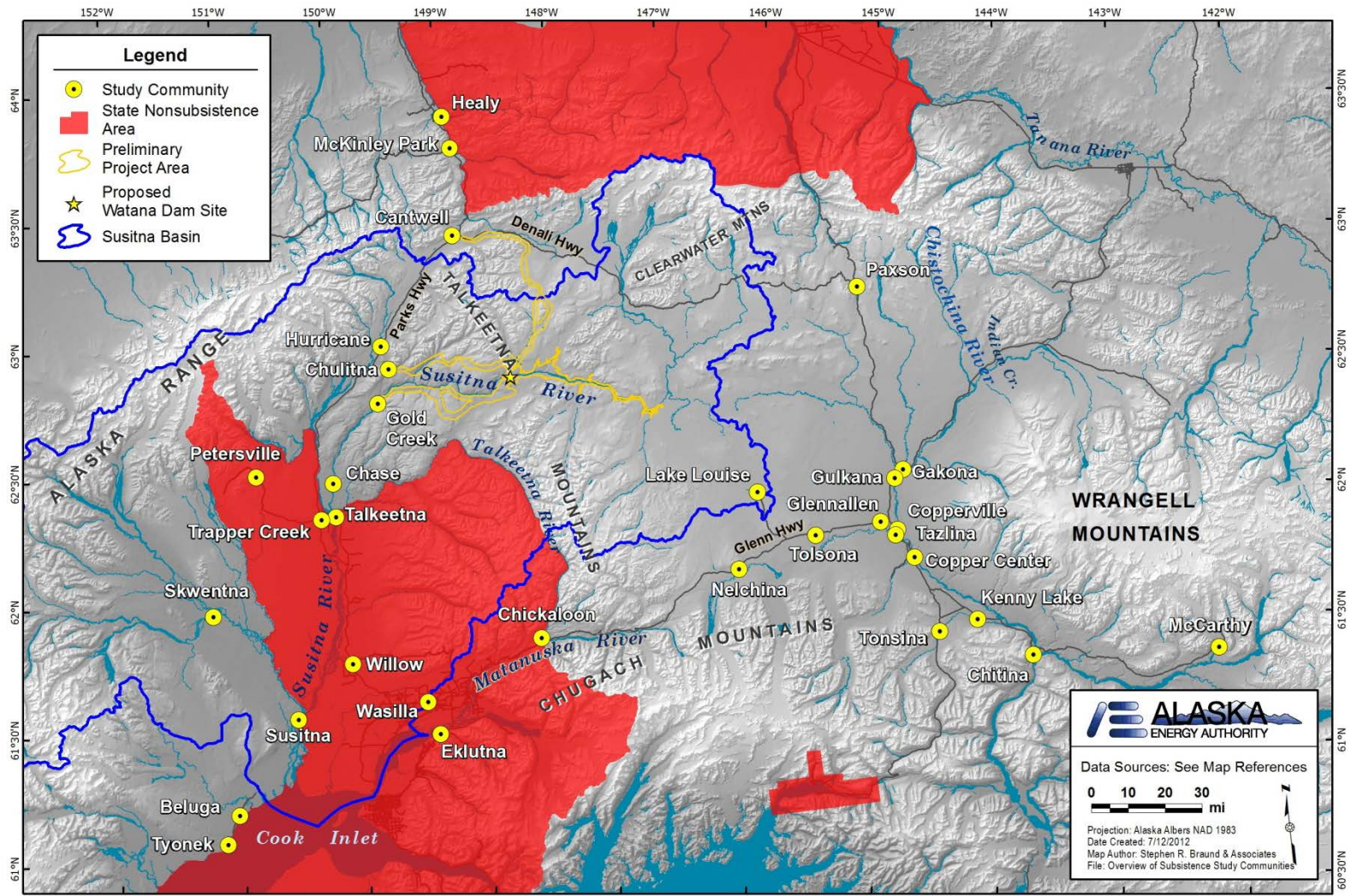
- Subsistence Baseline Documentation Study

Subsistence Goals and Objectives

- Document communities' subsistence use areas within or near the Project area
- Document communities' use of Project area to access other lands and waters used for subsistence
- Document communities' use of resources that migrate through the Project area and harvested in other areas.
- Collect and document traditional and local knowledge
- Evaluate Project plans to identify sources of potential impacts on identified subsistence uses
- Provide necessary information to support ANILCA 810



Subsistence Study Area



Subsistence Methods

1. Compilation of Existing Subsistence Data
2. ADF&G Household Surveys
3. Household Surveys in State-Designated Nonsubsistence Areas
4. Subsistence Mapping Interviews
5. Traditional and Local Knowledge Interviews
6. Impact Analysis
7. Annual Study Reports

Subsistence Expected Results

- Summary of Existing Subsistence Data
- ADF&G Technical Papers for Harvest Surveys
- Subsistence Use Area and Traditional Knowledge Report
 - Data from traditional knowledge interviews will be available to other resources (see next slide)
- Impact Analysis
 - Will incorporate above data (e.g., harvest amounts, user access, subsistence use areas) and traditional knowledge to inform impact analyses
 - Will also incorporate impact analyses from other resources (see next slide)

Subsistence Relationship to other Studies

- Subsistence Use Area and Traditional Knowledge Report
 - Study team chose to defer traditional knowledge interviews to second year in order to incorporate questions that other program leads may have after their first year studies
 - Report of traditional knowledge interviews will be available to other resources in order to inform their study and impact analyses.
- Impact Analysis
 - Will incorporate wildlife, fish, vegetation impact analyses (i.e., changes in resource availability) and other resource impact analyses (e.g., socioeconomic) as appropriate.



Subsistence Summary of 2012 Activities

- Subsistence Study Plan
- ADF&G Household Survey Pre-field Planning

Subsistence Discussion/Questions

- Questions or Concerns about Subsistence Study?