

SUSITNA-WATANA HYDROELECTRIC PROJECT

Formal ILP Proposed Study Plan Review

August 8, 2012

Prepared by Charles M. Mobley & Associates, Northern
Land Use Research, Inc., and URS Corporation



Cultural and Paleontological Resources Proposed Studies

- Cultural Resource Inventory and Evaluation
- Ethnogeographic and Traditional Cultural Properties (TCPs) Inventory and Evaluation
- Paleontological Resource Inventory and Evaluation

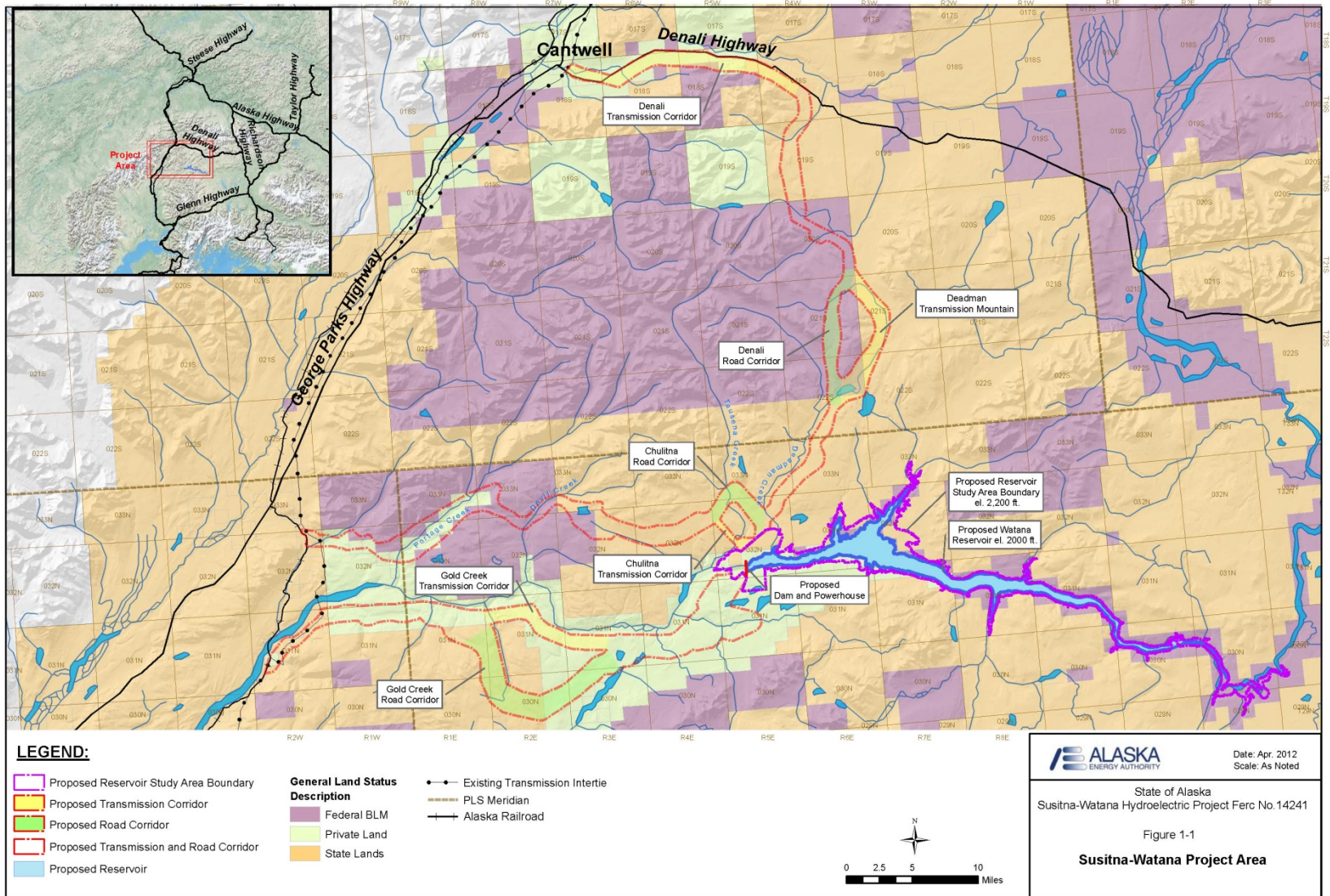
Cultural and Paleontological Resources

Goals and Objectives

- Cultural Resources
 - Inventory and evaluate archaeological sites, historic buildings, Traditional Cultural Properties (TCPs), and other historic properties that may be eligible to the National Register of Historic Places
 - Determine potential effects to historic properties
 - Develop mitigation strategies
- Paleontological Resources
 - Inventory paleontological resources and determine their scientific and public value



Cultural and Paleontological Resources Study Area



Cultural and Paleontological Resources Methods

- Cultural Resource Inventory and Evaluation
 - Archaeological survey of direct and indirect impact areas
 - Archival research
 - Site discovery and interpretation guided in part by results of Ethnogeographic Investigation
 - 2012 fieldwork to refine 1980s site distribution model, provide data relevant to modern model, and guide 2013/14 efforts
- Ethnogeographic Resources
 - Compilation and translation of existing Ahtna Athabaskan audiotapes relating to the study area
 - Comprehensive place name inventory for the study area
 - Regional Elders Conference as a venue for Ahtna and CIRI Native consultation
 - Interview of Ahtna elders regarding traditional use of the study area
- Paleontological Resource Inventory
 - Review of geologic literature to identify potential fossil-bearing formations
 - Examination of archived paleontological records
 - Field examination of known fossil sites and survey for others



Cultural and Paleontological Resources

Expected Results

- 2012 archaeological fieldwork will help refine 1980s site distribution model and help guide 2013/14 efforts
- 2013/14 cultural resource inventory and evaluation will locate cultural properties and evaluate their eligibility to the National Register
- Ethnogeographic resource investigations will inform the archaeological inventory and evaluation, and provide data for the TCP component of the cultural resource inventory and evaluation
- Paleontological resource inventory will locate fossil sites and evaluate their potential scientific and public value
- Resulting information on cultural and paleontological properties compared with zones of direct and indirect impact will determine effects on historic properties and paleontological resources

Cultural and Paleontological Resources Relationship to other Studies

- Ethnogeographic data will be shared as it is assembled to help inform the subsistence study
- Paleontological study will derive context from results of geological studies
- Recreation and transportation study data will be acquired as it is assembled to help define areas of potential indirect impacts to cultural resources

Cultural and Paleontological Resources

Summary of 2012 Activities

- Archaeological survey for 2012 geotechnical holes at dam site completed – no cultural resources found, logistical familiarity acquired
- Archaeological survey (three weeks, three-person crew) begun August 1, 2012 – ongoing
- 2012 study will produce stratigraphic information including volcanic ash layers (tephra) to help chronologically organize archaeological site inventory

